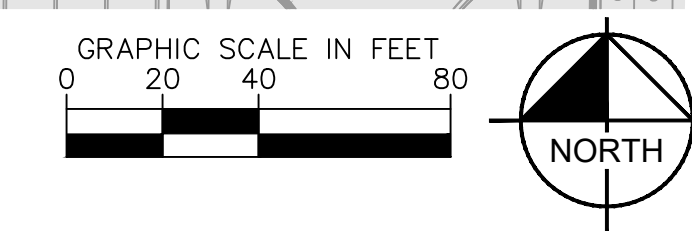
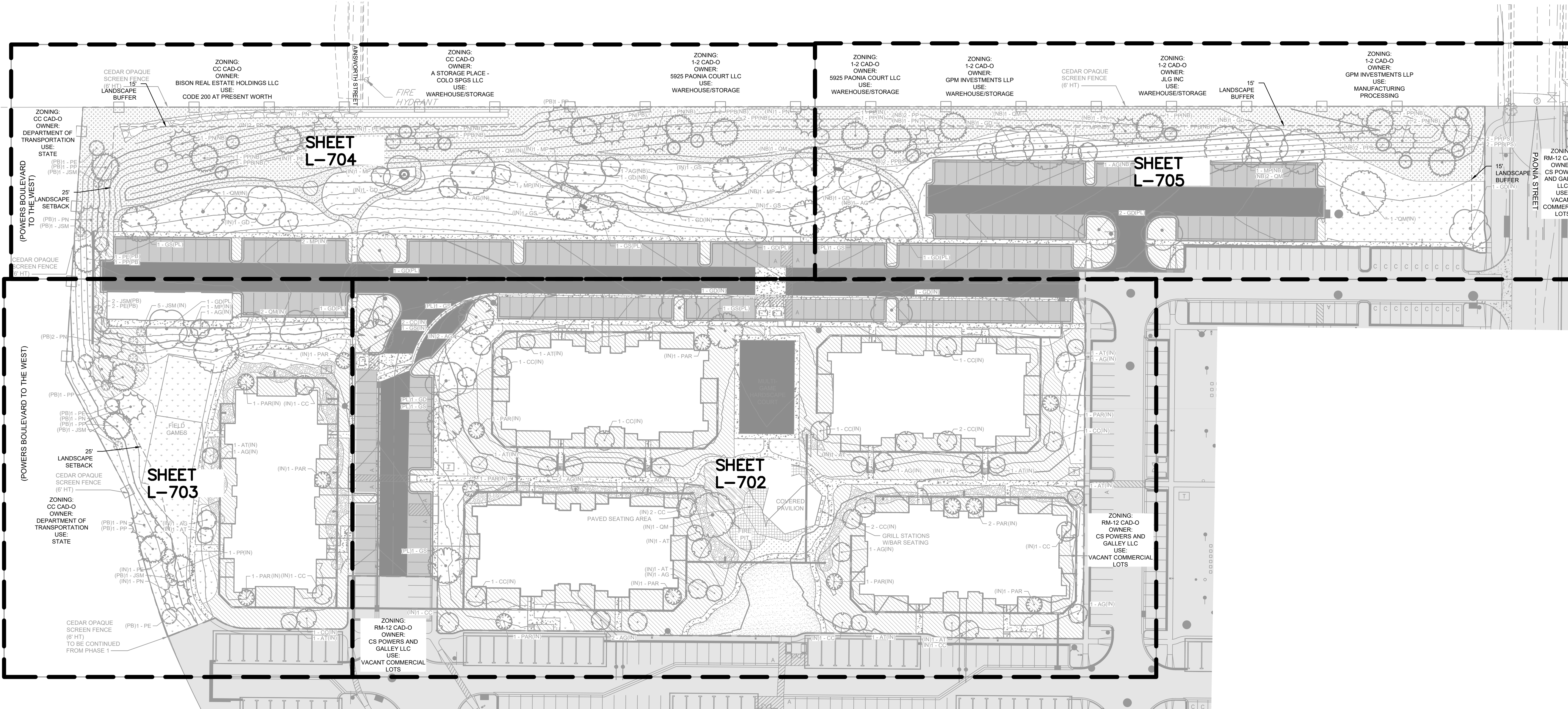


K:\COS\_LA\196140002 - Cimarron Hills\Phase 2\CADD\PlanSheets\CD\196140002 - CD\_LA.dwg Kotte, Alex 12/19/2022 9:10 AM



SHEET INDEX	
SHEET NUMBER	SHEET TITLE
L-701	LANDSCAPE SHEET INDEX
L-702	LANDSCAPE SITE DEVELOPMENT PLAN
L-703	LANDSCAPE SITE DEVELOPMENT PLAN
L-704	LANDSCAPE SITE DEVELOPMENT PLAN
L-705	LANDSCAPE SITE DEVELOPMENT PLAN
L-706	LANDSCAPE NOTES
L-707	LANDSCAPE DETAILS

NO.	REVISION	BY	DATE	APPR

**Kimley»Horn**  
 2022 KIMLEY-HORN AND ASSOCIATES, INC.  
 2 North Nevada Avenue, Suite 300  
 Colorado Springs, Colorado 80903 (719) 453-0180

DESIGNED BY: MVZ  
 DRAWN BY: MVZ/RES  
 CHECKED BY: EJG  
 DATE: 09/19/2022

**SOLACE APARTMENTS, FILING NO. 2, LOT 1**  
 SITE DEVELOPMENT PLAN  
 LANDSCAPE SHEET INDEX

**PRELIMINARY**  
 FOR REVIEW ONLY  
 NOT FOR  
 CONSTRUCTION

**Kimley»Horn**  
 Kimley-Horn and Associates, Inc.

PROJECT NO.  
09668009

SHEET  
L-701

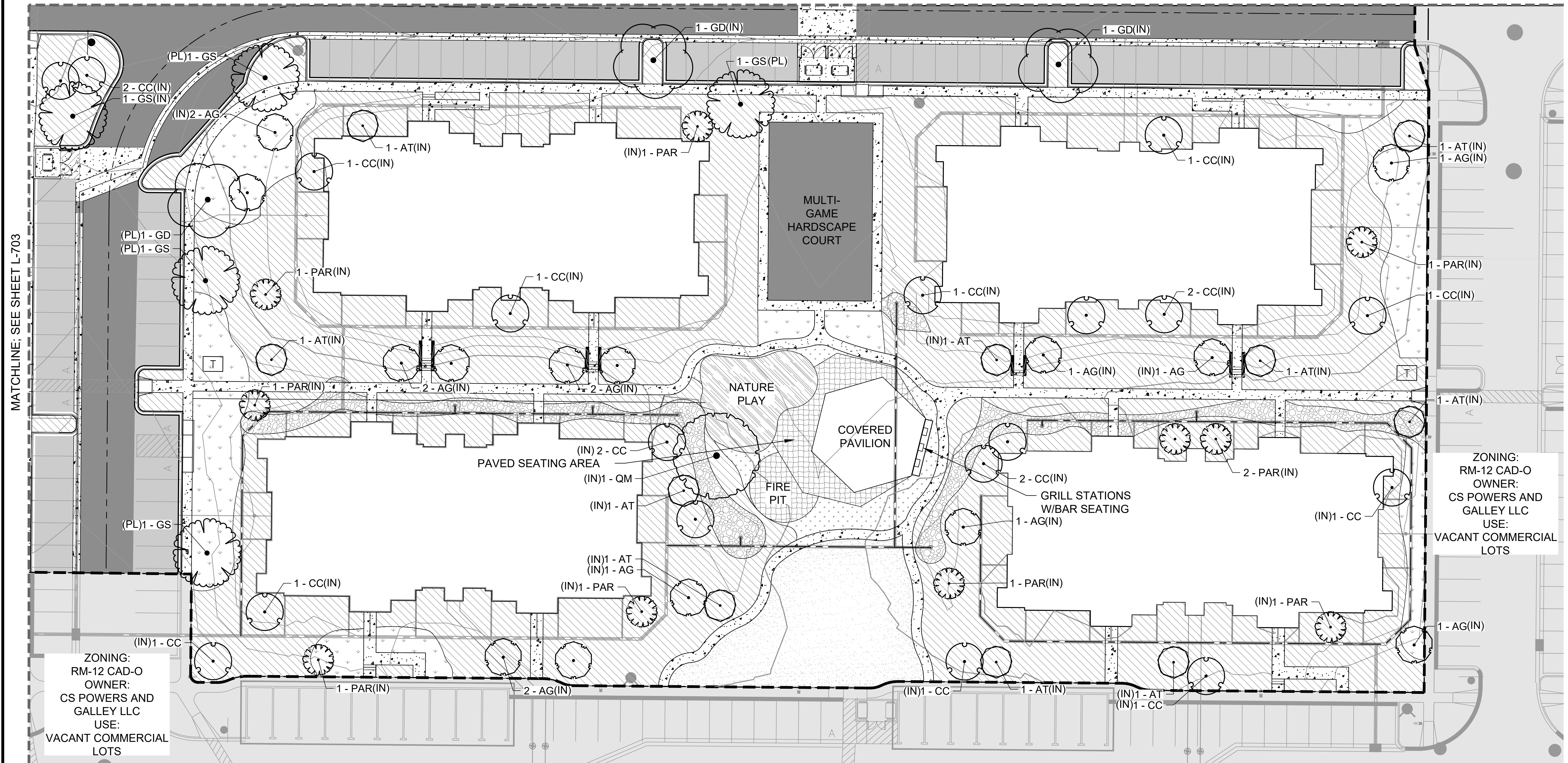




K:\COS\_LA\196140002 - Cimarron Hills\Phase 2\CADD\PlanSheets\CD\196140002 - CD\_LA.dwg Kotte, Alex 12/19/2022 9:10 AM

MATCHLINE; SEE SHEET L-704

MATCHLINE; SEE SHEET L-705



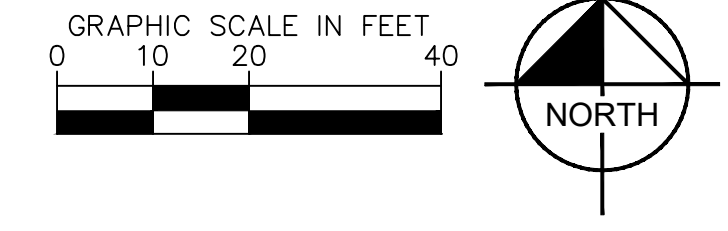
ZONING:  
RM-12 CAD-O  
OWNER:  
CS POWERS AND  
GALLEY LLC  
USE:  
VACANT COMMERCIAL  
LOTS

ZONING:  
RM-12 CAD-O  
OWNER:  
CS POWERS AND  
GALLEY LLC  
USE:  
VACANT COMMERCIAL  
LOTS

**PLANT SCHEDULE**

DECIDUOUS TREES	CODE	QTY	BOTANICAL / COMMON NAME	CONT. SIZE	SIZE/CAL	WIDTH	HEIGHT
AG	21		ACER GRANDIDENTATUM / HIGHLAND PARK / HIGHLAND PARK MAPLE	B & B	1.5" CAL MIN	18'-22'	25'-35'
AT	13		ACER GRINALEA / FLAME / FLAME AMUR MAPLE	B & B	1.5" CAL MIN	15'-20'	15'-20'
CC	21		CRATAEGUS CRUS-GALLI / INERMIS / THORNTLESS COCKSPUR HAWTHORN	B & B	1.5" CAL MIN	15'-20'	15'-25'
GD	18		GYMNOCALADUS DIDICA / ESPRESSO / KENTUCKY COFFEE TREE (SEEDLESS)	B & B	1.5" CAL MIN	40'-50'	50'-60'
GS	11		GLEDITSIA TRICANTHOS / IMPOCLE / IMPERIAL SEEDLESS HONEY LOCUST	B & B	1.5" CAL MIN	30'-40'	30'-40'
MP	10		MALUS 'PRAIRIFIRE' / PRAIRIFIRE CRABAPPLE	B & B	1.5" CAL MIN	15'-20'	15'-20'
QM	10		QUERCUS MACROCARPA / BURR OAK	B & B	1.5" CAL MIN	50'-60'	50'-60'
EVERGREEN TREES	CODE	QTY	BOTANICAL / COMMON NAME	CONT. SIZE	SIZE/CAL	WIDTH	HEIGHT
JSM	11		JUNIPERUS SCOPULORUM / MOONGLOW / MOONGLOW JUNIPER LOW ROOT DAMAGE POTENTIAL	B & B	6" HGT.	6'-8'	12'-15'
PAR	14		PINUS ARISTATA / BRISTLEcone PINE LOW ROOT DAMAGE POTENTIAL	B & B	6" HGT.	10'-20'	20'-40'
PE	10		PINUS EDULIS / PINON PINE LOW ROOT DAMAGE POTENTIAL	B & B	6" HGT.	10'-20'	20'-30'
PN	17		PINUS NIGRA / AUSTRIAN BLACK PINE	B & B	6" HGT.	30'-40'	40'-60'
PP	19		PINUS PONDEROSA / PONDEROSA PINE	B & B	6" HGT.	30'-40'	60'+
PPB	14		PICEA PUNGENS / BABY BLUEEYES / BABY BLUE EYES SPRUCE	B & B	6" HGT.	10'-15'	20'-30'

GROUND COVERS	CODE	QTY	BOTANICAL / COMMON NAME	TYPE	INSTALL RATE	WEED FABRIC	MFR.
BREEZE	5,951 SF		PIONEER GRANITE BREEZE / PIONEER SAND & GRAVEL	BREEZE	4"	YES	PIONEER SAND & GRAVEL
COBL A	65,506 SF		ROCK MULCH / 1 1/2"-3" RIVER ROCK	ROCK MULCH	4" DEPTH	YES	PIONEER SAND
COBL B	6,597 SF		3/4" RIVER ROCK COBBLESTONE SUBMIT SAMPLE FOR REVIEW AND APPROVAL PRIOR TO INSTALLATION.	ROCK MULCH	6-12" DEPTH	YES	PIONEER SAND & GRAVEL
SEED1	69,394 SF		EPIC ALL-PURPOSE LOW GROW MIX / EL PASO COUNTY. SCGM MANUAL TABLE 5-2 INSTALL PER TABLE 5-2 (42 LBS PLS) SUBMIT SUPPLIER CUT-SHEET FOR REVIEW AND APPROVAL PRIOR TO INSTALLATION.	SEED			PAWNEE BUTTES SEED
SEED2	43,024 SF		TALL FESCUE SEED MIX / ARKANSAS VALLEY SEED INSTALL PER MANUFACTURERS SPECIFICATIONS	SEED			PAWNEE BUTTES SEED
SOD	4,048 SF		POA PRATENSIS / KENTUCKY BLUEGRASS	SOD			PAWNEE BUTTES SEED
XB	1,413 SF		PLAYGROUND GROUND MATERIAL	PLAYGROUND FALL MATERIAL			
XP	1,602 SF		FLAGSTONE PAVERS	PAVERS			



BY: DATE: APPR:  
REVISION: NO.:

**Kimley»Horn**  
2022 KIMLEY-HORN AND ASSOCIATES, INC.  
2 North Nevada Avenue, Suite 300  
Colorado Springs, Colorado 80903 (719) 453-0180

DESIGNED BY: MVZ  
DRAWN BY: MVZ/RES  
CHECKED BY: EJG  
DATE: 09/19/2022

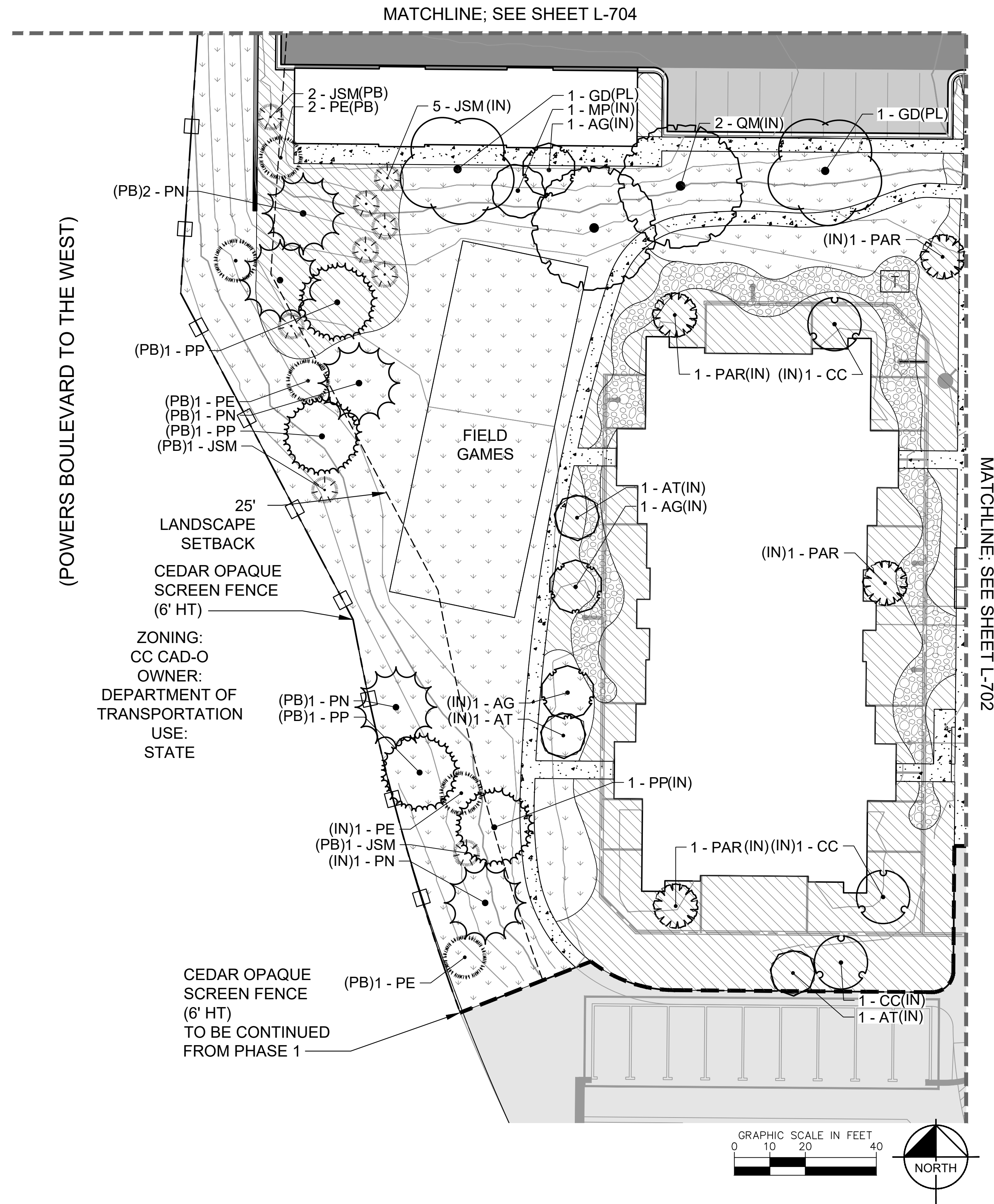
SOLACE APARTMENTS, FILING NO. 2, LOT 1  
SITE DEVELOPMENT PLAN  
LANDSCAPE PLAN 1

PROJECT NO.  
096668009

SHEET  
L-702

**811** Know what's below.  
Call before you dig.

K:\COS\_LA\196140002 - Cimarron Hills\Phase 2\CADD\PlanSheets\CD\196140002 - CD\_LA.dwg Kotte, Alex 12/19/2022 9:10 AM



**PLANT SCHEDULE**

DECIDUOUS TREES							
CODE	QTY	BOTANICAL / COMMON NAME	CONT. SIZE	SIZE/CAL	WIDTH	HEIGHT	
AG	21	ACER GRANDIDENTATUM / HIGHLAND PARK / HIGHLAND PARK MAPLE	B & B	1.5" CAL MIN	18'-22'	25'-35'	
AT	13	ACER GINNALA / FLAME / FLAME AMUR MAPLE	B & B	1.5" CAL MIN	15'-20'	15'-20'	
CC	21	CRATAEGUS CRUS-GALLI / 'NERMES' / THORNLESS COCKSPUR HAWTHORN	B & B	1.5" CAL MIN	15'-20'	15'-20'	
GD	18	GYMNOCALADUS DIOICA / 'ESPRESSO' / KENTUCKY COFFEE TREE (SEEDLESS)	B & B	1.5" CAL MIN	40'-50'	50'-60'	
GS	11	GLEDTISIA TRIACANTHOS / 'IMPCOLE' / IMPERIAL SEEDLESS HONEY LOCUST	B & B	1.5" CAL MIN	30'-40'	30'-40'	
MP	10	MALUS 'PRAIRIFIRE' / PRAIRIFIRE CRABAPPLE	B & B	1.5" CAL MIN	15'-20'	15'-20'	
QM	10	QUERCUS MACROCARPA / BURR OAK	B & B	1.5" CAL MIN	50'-60'	50'-80'	
EVERGREEN TREES							
CODE	QTY	BOTANICAL / COMMON NAME	CONT. SIZE	SIZE/CAL	WIDTH	HEIGHT	
JSM	11	JUNIPERUS SCOPULORUM / 'MOONGLOW' / MOONGLOW JUNIPER LOW ROOT DAMAGE POTENTIAL	B & B	6" HGT.	6'-8"	12'-15'	
PAR	14	PINUS ARISTATA / BRISTLEcone PINE LOW ROOT DAMAGE POTENTIAL	B & B	6" HGT.	10'-20'	20'-40'	
PE	10	PINUS EDULIS / PINON PINE LOW ROOT DAMAGE POTENTIAL	B & B	6" HGT.	10'-20'	20'-30'	
PN	17	PINUS NIGRA / AUSTRIAN BLACK PINE	B & B	6" HGT.	30'-40'	40'-60'	
PP	19	PINUS PONDEROSA / PONDEROSA PINE	B & B	6" HGT.	30'-40'	60'+	
PPB	14	PICEA PUNGENS / 'BABY BLUEEYES' / BABY BLUE EYES SPRUCE	B & B	6" HGT.	10'-15'	20'-30'	
GROUND COVERS							
CODE	QTY	BOTANICAL / COMMON NAME	TYPE	INSTALL RATE	WEED FABRIC	MFL	
BREEZE	5,951 SF	PIONEER GRANITE BREEZE / PIONEER SAND & GRAVEL	BREEZE	4"	YES	PIONEER SAND & GRAVEL	
COBLA	65,595 SF	ROCK MULCH / 1 1/2" 3" RIVER ROCK	ROCK MULCH	4" DEPTH	YES	PIONEER SAND	
COBLB	6,597 SF	3-4" RIVER ROCK COBBLESTONE SUBMIT SAMPLE FOR REVIEW AND APPROVAL PRIOR TO INSTALLATION.	ROCK MULCH	6-12" DEPTH	YES	PIONEER SAND & GRAVEL	
SEED1	69,394 SF	EPIC ALL-PURPOSE LOW GROW MIX / EL PASO COUNTY, SCM MANUAL TABLE 5-2 INSTALL PER TABLE 5-2, (42 LBS PLS) SUBMIT SUPPLIER CUT-SHEET FOR REVIEW AND APPROVAL PRIOR TO INSTALLATION.	SEED			PAWNEE BUTTES SEED	
SEED2	43,024 SF	TALL FESCUE SEED MIX / ARKANSAS VALLEY SEED INSTALL PER MANUFACTURERS SPECIFICATIONS	SEED			PAWNEE BUTTES SEED	
SOD	4,048 SF	POA PRATENSIS / KENTUCKY BLUEGRASS	SOD			PAWNEE BUTTES SEED	
X8	1,413 SF	..... / PLAYGROUND GROUND MATERIAL	PLAYGROUND FALL MATERIAL				
X9	1,602 SF	..... / FLAGSTONE PAVERS	PAVERS				

**Kimley»Horn**

2022 KIMLEY-HORN AND ASSOCIATES, INC.  
2 North Nevada Avenue, Suite 300  
Colorado Springs, Colorado 80903 (719) 453-0180

DESIGNED BY: MVZ  
DRAWN BY: MVZ/RES  
CHECKED BY: EJG  
DATE: 09/19/2022

SOLACE APARTMENTS, FILING NO. 2, LOT 1  
SITE DEVELOPMENT PLAN  
LANDSCAPE PLAN 2

PRELIMINARY  
FOR REVIEW ONLY  
NOT FOR CONSTRUCTION  
**Kimley»Horn**  
Kimley-Horn and Associates, P.C.

PROJECT NO.  
096668009

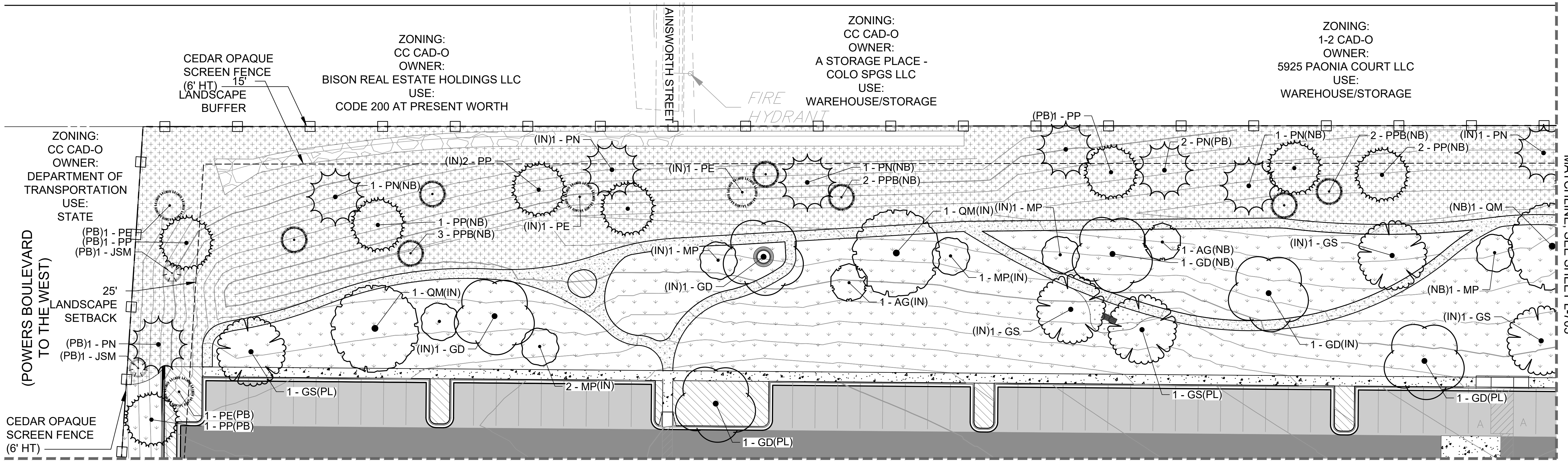
SHEET  
L-703



NO.	REVISION	BY	DATE	APPR

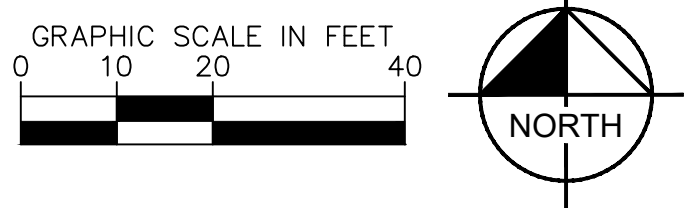


K:\COS\_LA\196140002 - Cimarron Hills\Phase 2\CADD\PlanSheets\CD\196140002 - CD\_LA.dwg Kotte, Alex 12/19/2022 9:11 AM



MATCHLINE: SEE SHEET L-703

MATCHLINE: SEE SHEET L-702



**PLANT SCHEDULE**

SEMI-DWARF TREES			CODE	QTY	BOTANICAL / COMMON NAME	CONT. SIZE	SIZE/CAL.	WIDTH	HEIGHT
AG	21	ACER GRANDIDENTATUM / HIGHLAND PARK / HIGHLAND PARK MAPLE	B & B		1.5' CAL MIN	18'-22'	25'-30'		
AT	13	ACER GRINALE 'FLAME' / FLAME AMUR MAPLE	B & B		1.5' CAL MIN	15'-20'	15'-20'		
CC	21	CRATAEGUS CRUS-GALLI 'INERMS' / THORNLESS COCKSPUR HAWTHORN	B & B		1.5' CAL MIN	15'-20'	15'-20'		
GD	18	GYMNOCADUS DIOICA 'ESPRESSO' / KENTUCKY COFFEE TREE (SEEDLESS)	B & B		1.5' CAL MIN	40'-50'	50'-60'		
GS	11	GLYDTSIA TRIACANTHOS 'IMPOOLE' / IMPERIAL SEEDLESS HONEY LOCUST	B & B		1.5' CAL MIN	30'-40'	30'-40'		
MP	10	MALUS 'PRAIRIFIRE' / PRAIRIFIRE CRABAPPLE	B & B		1.5' CAL MIN	15'-20'	15'-20'		
QM	10	QUERCUS MACROCARPA / BURR OAK	B & B		1.5' CAL MIN	50'-60'	50'-80'		
EYESCREEN TREES			CODE	QTY	BOTANICAL / COMMON NAME	CONT. SIZE	SIZE/CAL.	WIDTH	HEIGHT
JSM	11	JUNPERUS SCOPULORUM 'MOONGLOW' / MOONGLOW JUNIPER LOW ROOT DAMAGE POTENTIAL	B & B		6' HGT.	6'-8'	12'-15'		
PAR	14	PINUS ARISTATA / BRISTLECONE PINE LOW ROOT DAMAGE POTENTIAL	B & B		6' HGT.	10'-20'	20'-40'		
PE	10	PINUS EDULIS / PINON PINE LOW ROOT DAMAGE POTENTIAL	B & B		6' HGT.	10'-20'	20'-30'		
PN	17	PINUS NIGRA / AUSTRIAN BLACK PINE	B & B		6' HGT.	30'-40'	40'-60'		
PP	19	PINUS PONDEROSA / PONDEROSA PINE	B & B		6' HGT.	30'-40'	60'+		
PPB	14	PICEA PUNGENS 'BABY BLUEEYES' / BABY BLUE EYES SPRUCE	B & B		6' HGT.	10'-15'	20'-30'		
GROUND COVERS			CODE	QTY	BOTANICAL / COMMON NAME	TYPE	INSTALL RATE	WEED FABRIC	MFL
BREEZE	5,961 SF	PIONEER GRANITE BREEZE / PIONEER SAND & GRAVEL	BREEZE		4"	YES	PIONEER SAND & GRAVEL		
COBLA	65,506 SF	ROCK MULCH / 1 1/2"-3" RIVER ROCK	ROCK MULCH		4" DEPTH	YES	PIONEER SAND		
COBLB	6,597 SF	3-6" RIVER ROCK COBBLESTONE SUBMIT SAMPLE FOR REVIEW AND APPROVAL PRIOR TO INSTALLATION.	ROCK MULCH		6-12" DEPTH	YES	PIONEER SAND & GRAVEL		
SEED1	69,394 SF	EPC ALL-PURPOSE LOW GROW MIX / EL PASO COUNTY, SCM MANUAL TABLE 5-2 INSTALL PER TABLE 5-2, (42 LBS PLS) SUBMIT SUPPLIER CUT-SHEET FOR REVIEW AND APPROVAL PRIOR TO INSTALLATION.	SEED				PAWNEE BUTTES SEED		
SEED2	43,024 SF	TALL FESCUE SEED MIX / ARKANSAS VALLEY SEED INSTALL PER MANUFACTURERS SPECIFICATIONS	SEED				PAWNEE BUTTES SEED		
SOD	4,048 SF	POA PRATENSIS / KENTUCKY BLUEGRASS	SOD				PAWNEE BUTTES SEED		
X8	1,413 SF	..... / PLAYGROUND GROUND MATERIAL	PLAYGROUND FALL MATERIAL						
X9	1,602 SF	..... / FLAGSTONE PAVERS	PAVERS						

NO.	REVISION	BY	DATE	APPR

**Kimley Horn**  
 2022 KIMLEY-HORN AND ASSOCIATES, INC.  
 2 North Nevada Avenue, Suite 300  
 Colorado Springs, Colorado 80903 (719) 453-0180

DESIGNED BY: MVZ  
 DRAWN BY: MVZ/RES  
 CHECKED BY: EJJ  
 DATE: 09/19/2022

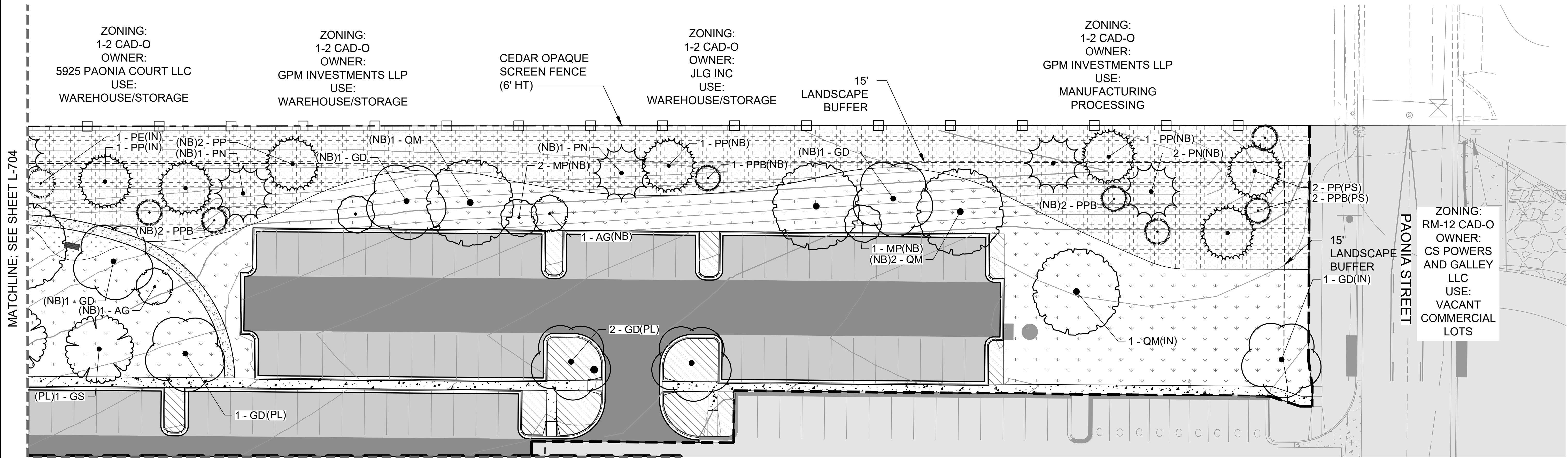
**SOLACE APARTMENTS, FILING NO. 2, LOT 1**  
 SITE DEVELOPMENT PLAN  
 LANDSCAPE PLAN 3

PRELIMINARY  
 FOR REVIEW ONLY  
 NOT FOR CONSTRUCTION  
**Kimley Horn**  
 Kimley-Horn and Associates, P.C.

PROJECT NO.  
 096668009  
 SHEET  
 L-704

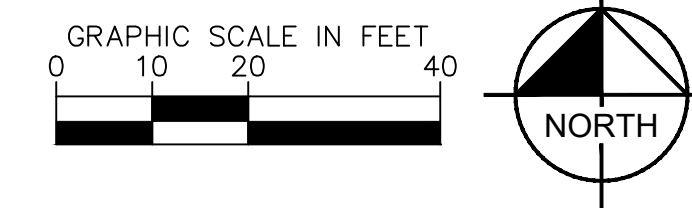


K:\COS\_LA\196140002 - Cimarron Hills\Phase 2\CADD\PlanSheets\CD\196140002 - CD\_LA.dwg Kotte, Alex 12/19/2022 9:11 AM



**PLANT SCHEDULE**

DECIDUOUS TREES				CONT. SIZE	SIZE/CAL.	WIDTH	HEIGHT
CODE	QTY	BOTANICAL / COMMON NAME					
AG	21	ACER GRANDIDENTATUM 'HIGHLAND PARK' / HIGHLAND PARK MAPLE	B & B		1.5" CAL MIN	18'-22'	25'-35'
AT	13	ACER GARNALA 'FLAME' / FLAME AMUR MAPLE	B & B		1.5" CAL MIN	15'-20'	15'-20'
CC	21	CRATAEGUS CRUS-GALLI 'INERMIS' / THORNLESS COCKSPUR HAWTHORN	B & B		1.5" CAL MIN	15'-20'	15'-25'
GD	18	GYMNOCLADUS DIOICA 'ESPRESSO' / KENTUCKY COFFEE TREE (SEEDLESS)	B & B		1.5" CAL MIN	40'-50'	50'-60'
GS	11	GLEDITSIA TRICANTHOS 'IMPERIAL' / IMPERIAL SEEDLESS HONEY LOCUST	B & B		1.5" CAL MIN	30'-40'	30'-40'
MP	10	MALUS 'PRAIRIFIRE' / PRAIRIFIRE CRABAPPLE	B & B		1.5" CAL MIN	15'-20'	15'-20'
QM	10	QUERCUS MACROCARPA / BURR OAK	B & B		1.5" CAL MIN	50'-60'	50'-60'
EVERGREEN TREES				CONT. SIZE	SIZE/CAL.	WIDTH	HEIGHT
CODE	QTY	BOTANICAL / COMMON NAME					
JSM	11	JUNIPERUS SCOPULORUM 'MOONGLOW' / MOONGLOW JUNIPER LOW ROOT DAMAGE POTENTIAL	B & B		6" HGT.	6'-8'	12'-15'
PAR	14	PINUS ARISTATA / BRISTLEcone PINE LOW ROOT DAMAGE POTENTIAL	B & B		6" HGT.	10'-20'	20'-40'
PE	10	PINUS EDULIS / PINON PINE LOW ROOT DAMAGE POTENTIAL	B & B		6" HGT.	10'-20'	20'-30'
PN	17	PINUS NIGRA / AUSTRIAN BLACK PINE	B & B		6" HGT.	30'-40'	40'-60'
PP	19	PINUS PONDEROSA / PONDEROSA PINE	B & B		6" HGT.	30'-40'	60'+
PPB	14	PICEA PUNGENS 'BABY BLUEEYES' / BABY BLUE EYES SPRUCE	B & B		6" HGT.	10'-15'	20'-30'
GROUND COVERS				TYPE	INSTALL RATE	WEED FABRIC	MFR.
CODE	QTY	BOTANICAL / COMMON NAME					
BREEZE	5,861 SF	PIONEER GRANITE BREEZE / PIONEER SAND & GRAVEL	BREEZE		4"	YES	PIONEER SAND & GRAVEL
COBL A	65,506 SF	ROCK MULCH 1 1/2"-3" RIVER ROCK	ROCK MULCH		4" DEPTH	YES	PIONEER SAND
COBL B	6,597 SF	3/4" RIVER ROCK COBBLESTONE SUBMIT SAMPLE FOR REVIEW AND APPROVAL PRIOR TO INSTALLATION.	ROCK MULCH		6-12" DEPTH	YES	PIONEER SAND & GRAVEL
SEED1	69,364 SF	EPC ALL-PURPOSE LOW GROW MIX / EL PASO COUNTY, SCM MANUAL TABLE 5-2 INSTALL PER TABLE 5-2 (42 LBS / 9.53) SUBMIT SUPPLIER CUT-SHEET FOR REVIEW AND APPROVAL PRIOR TO INSTALLATION.	SEED				PAWNEE BUTTES SEED
SEED2	43,024 SF	TALL FESCUE SEED MIX / ARKANSAS VALLEY SEED INSTALL PER MANUFACTURERS SPECIFICATIONS	SEED				PAWNEE BUTTES SEED
SOD	4,048 SF	POA PRATENSIS / KENTUCKY BLUEGRASS	SOD				PAWNEE BUTTES SEED
X8	1,413 SF	..... / PLAYGROUND GROUND MATERIAL	PLAYGROUND FALL MATERIAL				
X9	1,602 SF	..... / FLAGSTONE PAVERS	PAVERS				



REVISION NO. BY DATE APPR

**Kimley»Horn**  
 2022 KIMLEY-HORN AND ASSOCIATES, INC.  
 2 North Nevada Avenue, Suite 300  
 Colorado Springs, Colorado 80903 (719) 453-0180

DESIGNED BY: MVZ  
 DRAWN BY: MVZ/RES  
 CHECKED BY: EJG  
 DATE: 09/19/2022

**SOLACE APARTMENTS, FILING NO. 2, LOT 1**  
**SITE DEVELOPMENT PLAN**  
**LANDSCAPE PLAN 4**

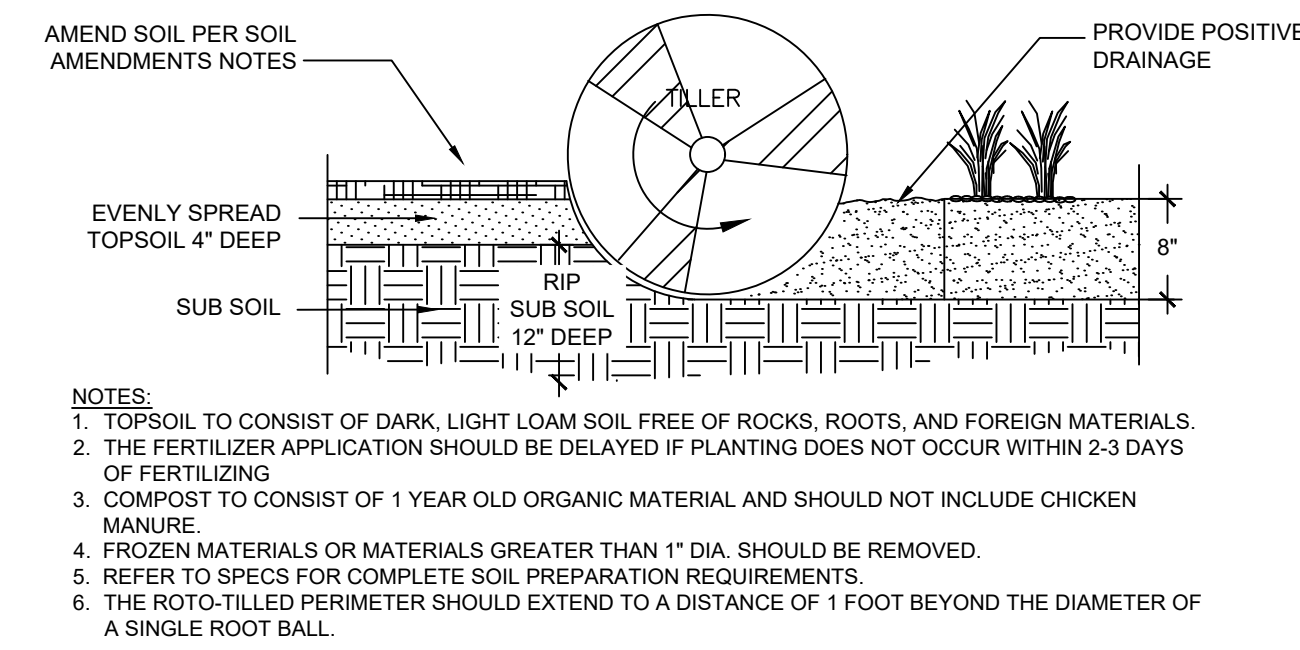
PROJECT NO. 096668009  
 SHEET L-705

**811** Know what's below. Call before you dig.

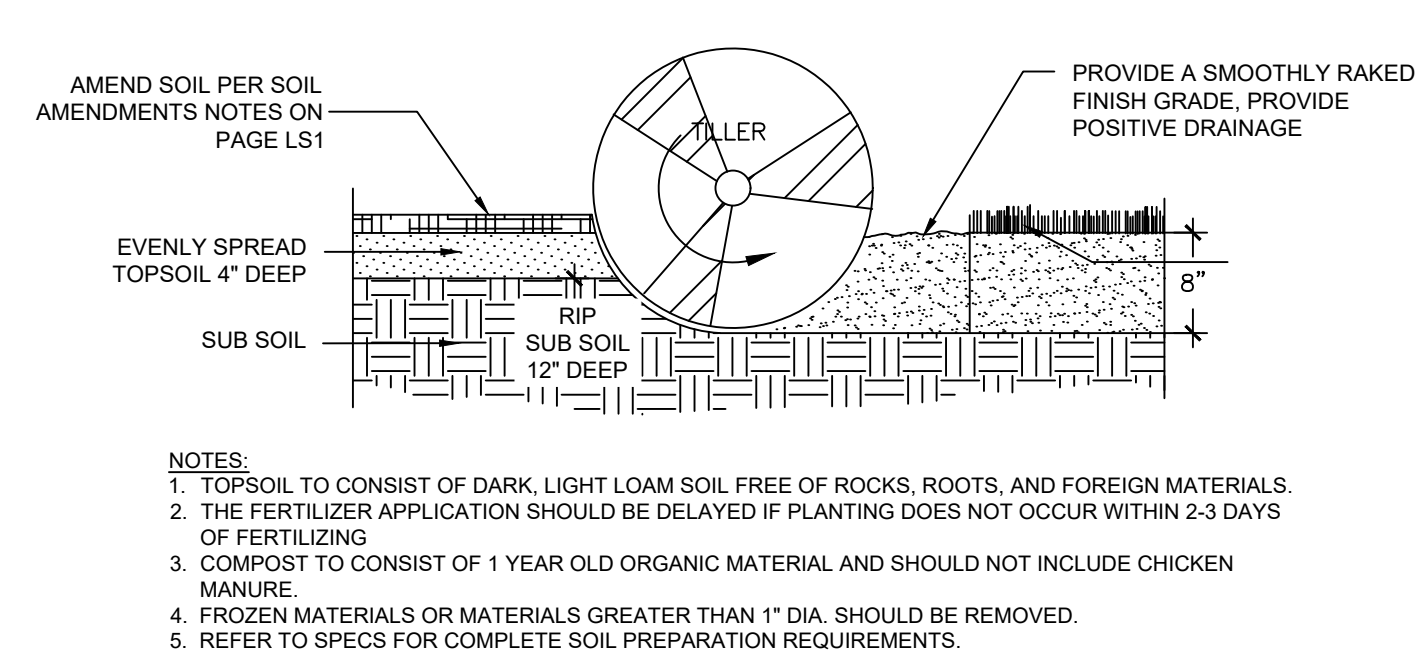




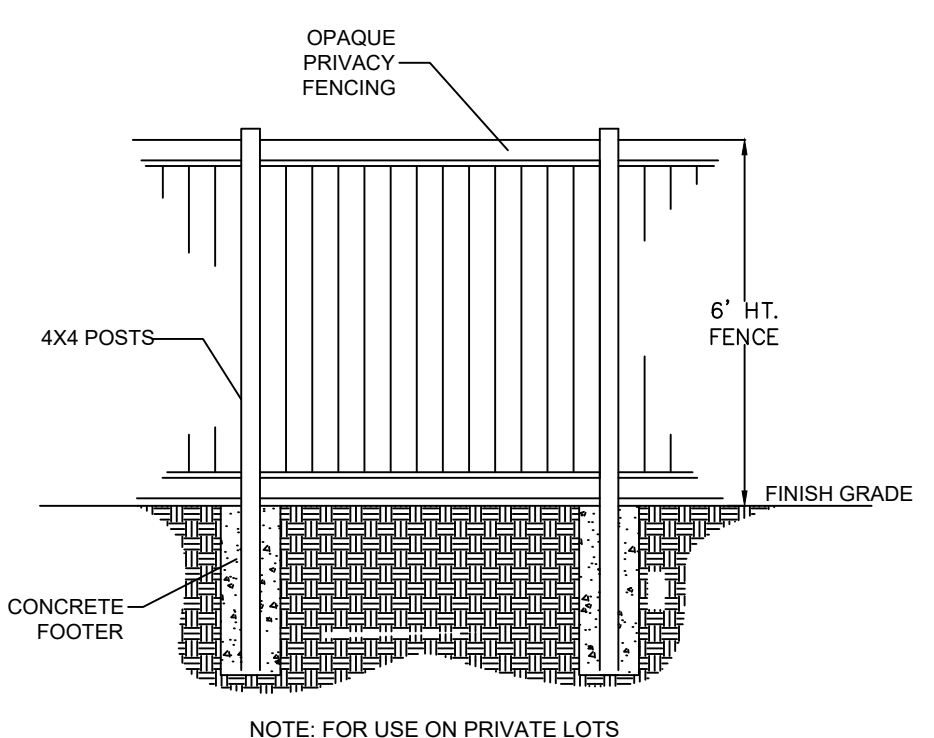
K:\COS\_LA\196140002 - Cimarron Hills\Phase 2\CADD\PlanSheets\CD\196140002 - CD\_LA.dwg Kotte, Alex 12/19/2022 9:11 AM



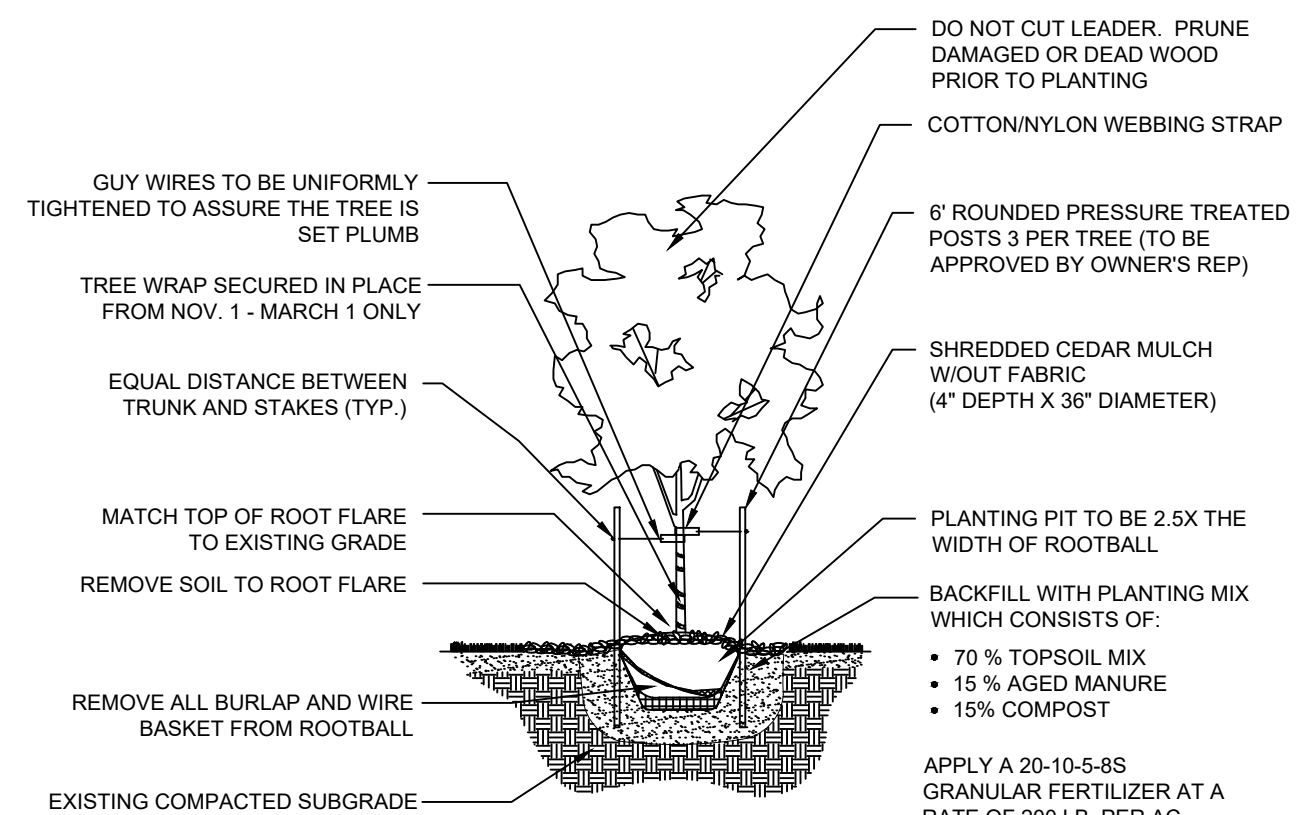
**1 SOIL PREP**  
NTS 196-140-002-01



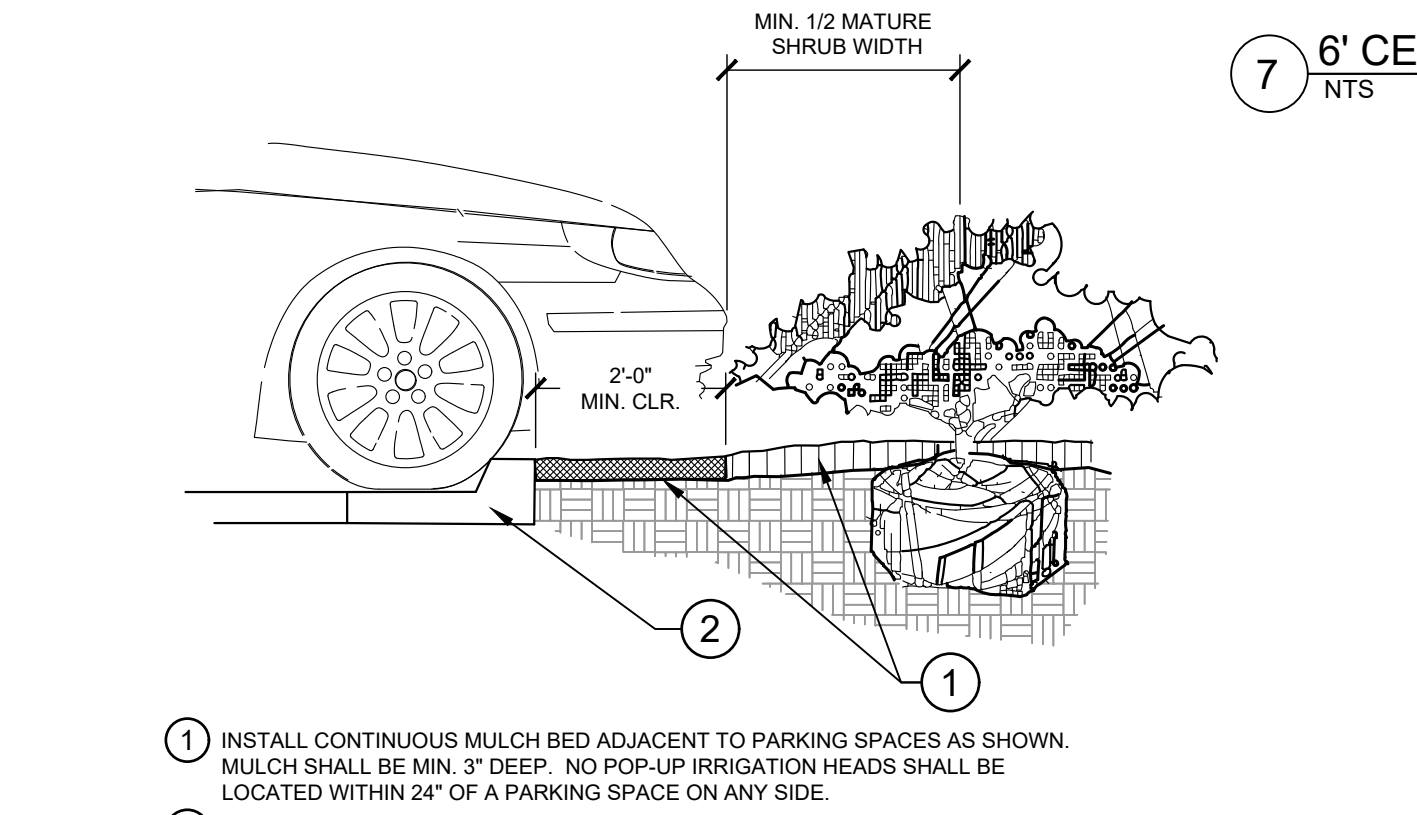
**4 SOIL PREPARATION - SOD AREAS**  
NTS 196-140-002-04



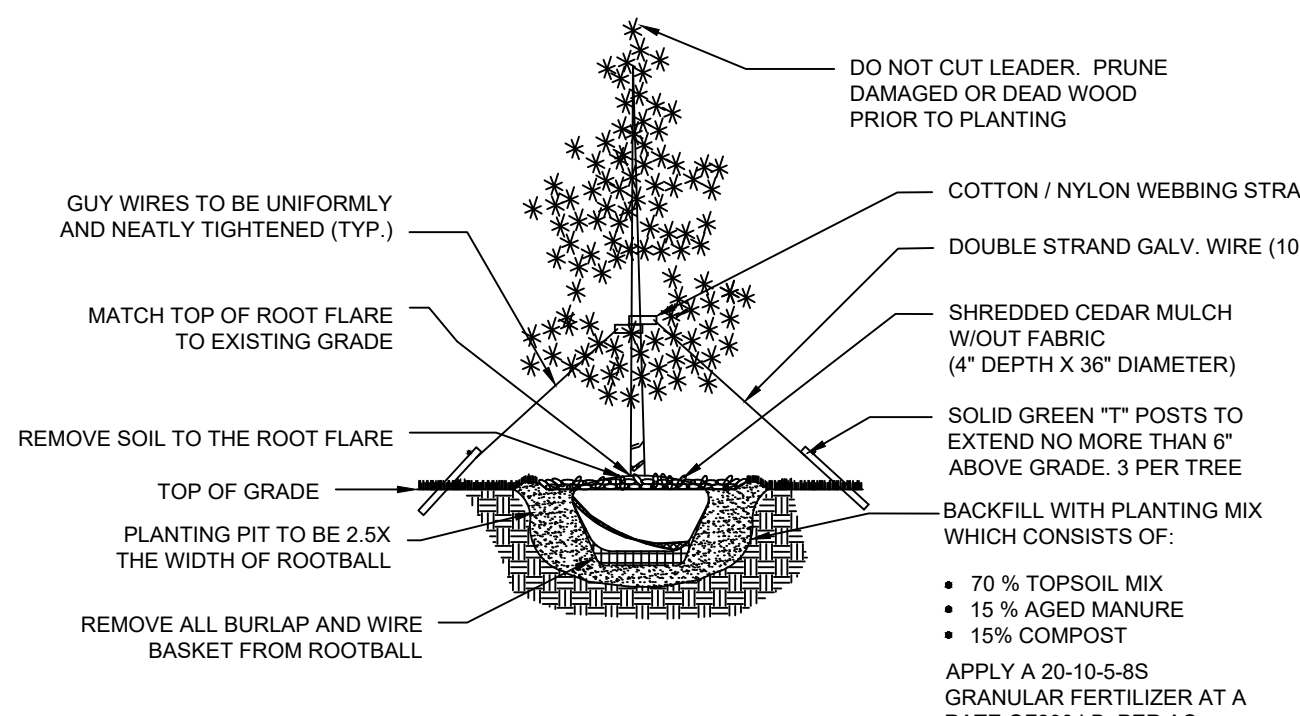
**7 6' CEDAR PRIVACY FENCE**  
NTS 096-668-022-08



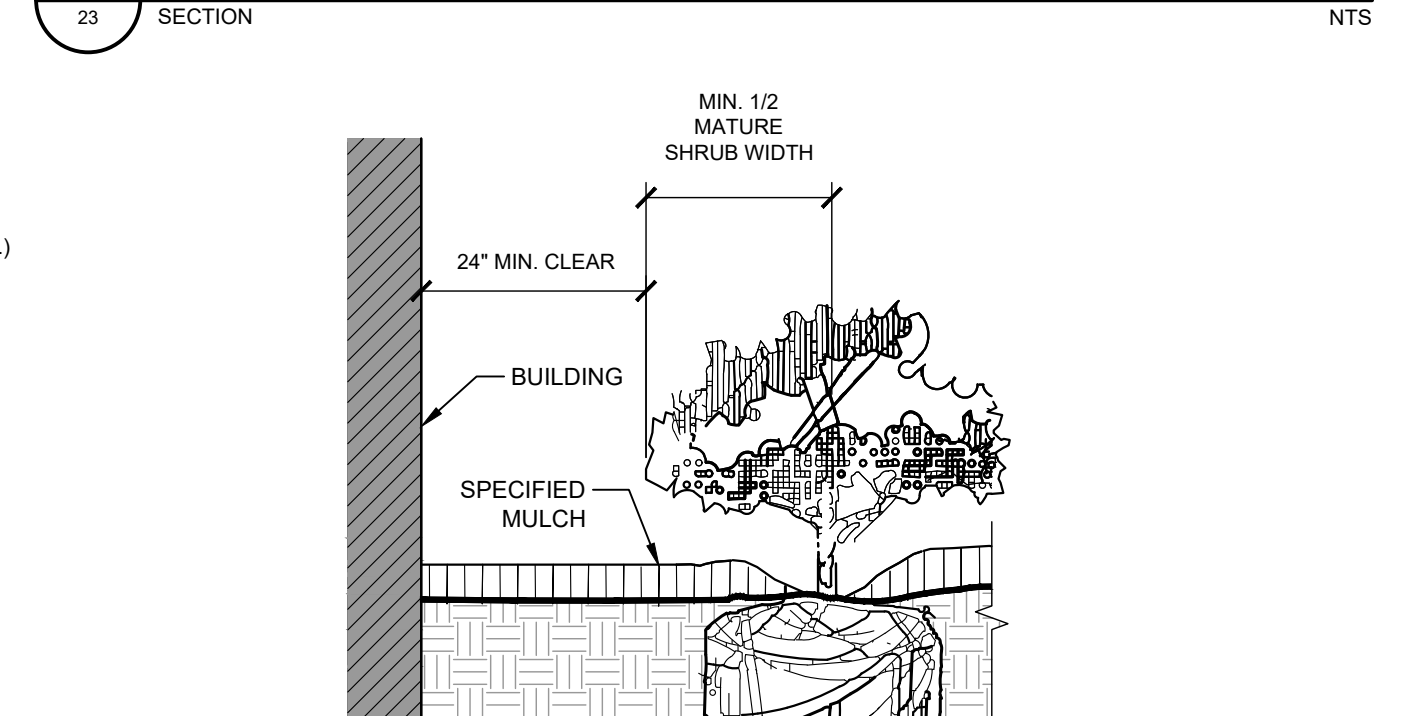
**2 DECIDUOUS TREE PLANTING**  
NTS 196-140-002-02



**5 PARKING SPACE/CURB PLANTING**  
SECTION 23 NTS



**3 EVERGREEN TREE PLANTING**  
NTS 196-140-002-03



**6 PLANTINGS ADJACENT TO BUILDINGS**  
NTS 196-140-002-07

INTERNAL LANDSCAPING	
NET SITE AREA:	340,795 SF (7.82 AC)
PERCENT MINIMUM INTERNAL AREA:	15%
INTERNAL LANDSCAPE AREA REQ. / PROV.	51,120 SF / 167,796 SF
TREE PER FEET REQ.	1 TREE PER 500 SF
INTERNAL TREES REQ. / PROV.	103 / 104
SHRUB SUBSTITUTES REQ. / PROV.	N/A
ORN. GRASS SUBSTITUTES REQ. / PROV.	N/A
PLANT ABBREVIATION DENOTED ON PLAN:	IN
% GROUND PLANE VEG. REQ. / PROV.	50% / 50%

PARKING LOT LANDSCAPING	
NUMBER OF VEHICLE SPACES PROVIDED:	224
SHADE TREES REQUIRED:	1 TREE PER 15 STALLS
SHADE TREES REQ. / PROV.:	15 / 15
PARKING LOT FRONTAGES:	NORTH
LENGTH OF FRONTAGE:	253'
LENGTH OF 3' TALL SCREENING PLANTS REQ. / PROV.:	169' / 169' *
LENGTH OF BERM OR FENCE REQ. / PROV.:	1082'
PLANT ABBREVIATION DENOTED ON PLAN:	PL

\* SCREENING REQUIREMENT MET THROUGH GRADING OF SITE AND EVERGREEN PLANTINGS TO THE NORTH.

LANDSCAPE SETBACKS AND BUFFERS			
STREET NAME OR BOUNDARY:	POWERS BLVD	PAONIA ST	NORTH BUFFER
ZONE DISTRICT BOUNDARY:	YES	YES	YES
STREET CLASSIFICATION:	EXPRESSWAY	NON-ARTEIAL	N/A
SETBACK DEPTH REQUIRED / PROVIDED:	25' / 25'	10' / 10'	15' / 100' +
LINEAR FOOTAGE:	425'	113'	1082'
TREE PER FEET REQ.:	1 TREE PER 20 LF	1 TREE PER 30 LF	1 TREE PER 25 LF
NUMBER OF TREES REQ. / PROV.	22 / 22	4 / 4	44 / 44
EVERGREEN TREES REQ. / PROV.	8 / 22	2 / 4	15 / 26
SHRUB SUBSTITUTES REQ. / PROV.	N/A	N/A	N/A
ORN. GRASS SUBSTITUTES REQ. / PROV.	N/A	N/A	N/A
OPAQUE SCREEN REQ. / PROV.	N/A	N/A	1082' / 1082'
PLANT ABBREVIATION DENOTED ON PLAN:	PB	PS	NB
% GROUND PLANE VEG. REQ. / PROV.	75% / 75%	75% / 75%	75% / 100%

**Kimley»Horn**  
 2022 KIMLEY-HORN AND ASSOCIATES, INC.  
 2 North Nevada Avenue, Suite 300  
 Colorado Springs, Colorado 80903 (719) 453-0180

SOLACE APARTMENTS, FILING NO. 2, LOT 1  
 SITE DEVELOPMENT PLAN  
 LANDSCAPE DETAILS

PRELIMINARY  
 FOR REVIEW ONLY  
 NOT FOR  
 CONSTRUCTION  
**Kimley»Horn**  
 Kimley-Horn and Associates, Inc.

PROJECT NO.  
 096668009  
 SHEET  
 L-707

DESIGNED BY: MVZ  
 DRAWN BY: MVZ/RES  
 CHECKED BY: EJJ  
 DATE: 09/19/2022

REVISION  
 NO.

BY DATE APPR

