

VERIZON EQUIPMENT
ANTENNA CL: 45'-0"
MOUNT CL: 45'-0"

(E) VERIZON EQUIPMENT TO BE RELOCATED
(6) COMMSCOPE - NHH-65B-R2B ANTENNAS
(3) ERICSSON 4449 RRHs
(3) ERICSSON 8843 RRHs
INSTALLED ON EXISTING MOUNTS

(E) 69'-0" MONOPINE

GRADE (REFERENCE)
ELEV. = 0'-0"

1 EXISTING TOWER ELEVATION
SCALE: 1/4"=1'-0" (FULL SIZE)
1/8"=1'-0" (11x17)

INSTALLER NOTE:

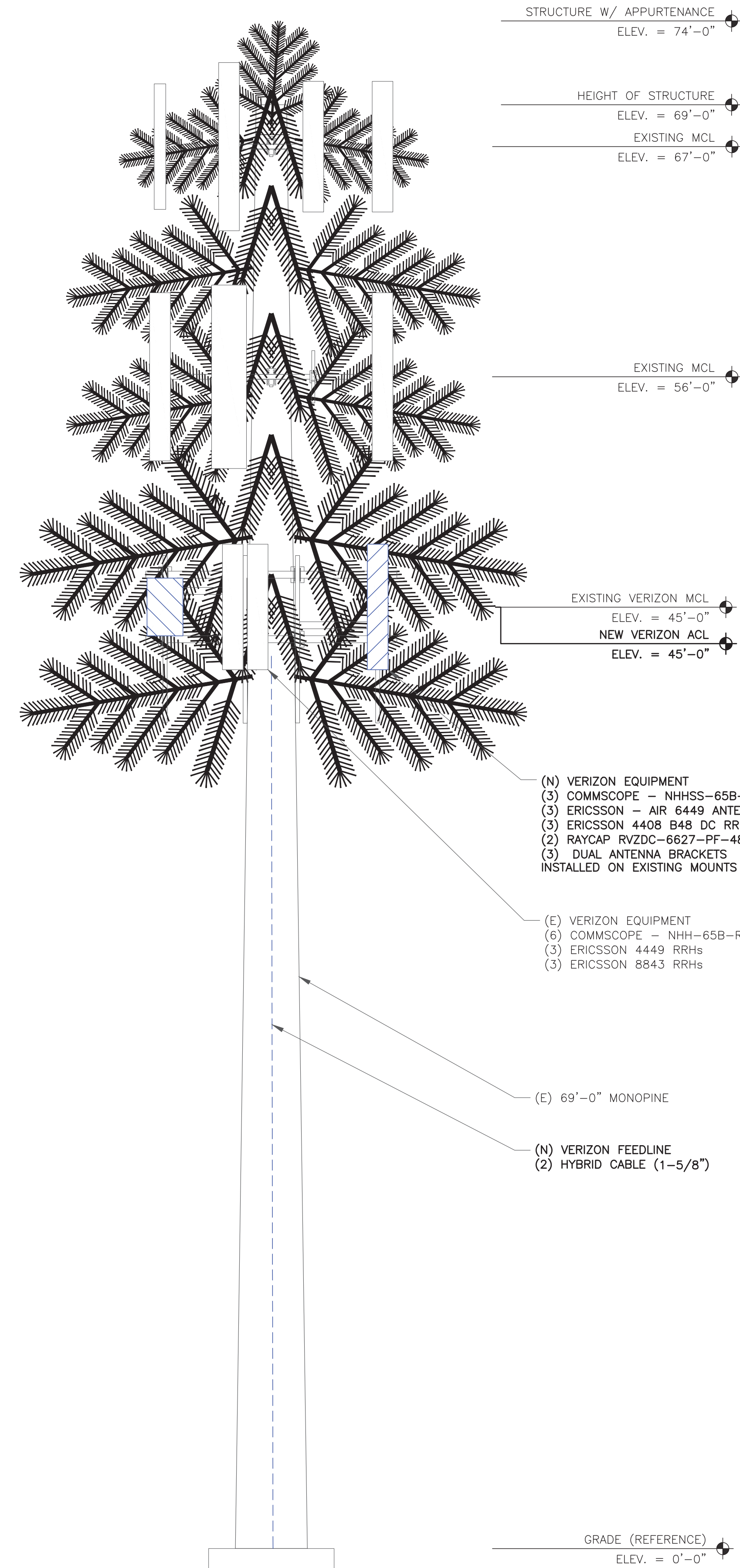
- EXISTING AND PROPOSED ANTENNA/EQUIPMENT POSITIONING SHOWN PER RFDS. FIELD CONDITIONS MAY VARY.
- GC IS TO CAMOUFLAGE PROPOSED ANTENNAS AS REQUIRED BY AUTHORITY HAVING JURISDICTION. GC TO COORDINATE WITH VERIZON CM TO CONFIRM CAMOUFLAGE METHOD DOES NOT OBSTRUCT SUB6 ANTENNA RF SIGNAL.

TOWER ANALYSIS NOTES:

- THE DESIGN DEPICTED IN THESE DRAWINGS IS VALID WHEN ACCOMPANIED BY A CORRESPONDING PASSING TOWER ANALYSIS.
- CONSTRUCTION MANAGER / GENERAL CONTRACTOR SHALL REVIEW THE TOWER ANALYSIS FOR ANY CONDITIONS PRIOR TO INSTALLATION.
- ANY REQUIRED TOWER MODIFICATION DESIGN OR TOWER REPLACEMENT SHALL BE APPROVED BY EOR.

MOUNT ANALYSIS NOTES:

- THE DESIGN DEPICTED IN THESE DRAWINGS IS VALID WHEN ACCOMPANIED BY A CORRESPONDING PASSING MOUNT ANALYSIS.
- CONSTRUCTION MANAGER / GENERAL CONTRACTOR SHALL REVIEW THE MOUNT ANALYSIS FOR ANY CONDITIONS PRIOR TO INSTALLATION.
- ANY REQUIRED MOUNT MODIFICATION DESIGN OR MOUNT REPLACEMENT SHALL BE APPROVED BY EOR.



VERIZON EQUIPMENT
ANTENNA CL: 45'-0"
MOUNT CL: 45'-0"

(N) VERIZON EQUIPMENT
(3) COMMSCOPE - NHHSS-65B-R2BT4 ANTENNAS
(3) ERICSSON - AIR 6449 ANTENNAS
(3) ERICSSON 4408 B48 DC RRHs
(2) RAYCAP RVZDC-6627-PF-48 OVP BOX
(3) DUAL ANTENNA BRACKETS
INSTALLED ON EXISTING MOUNTS

(E) VERIZON EQUIPMENT
(6) COMMSCOPE - NHH-65B-R2B ANTENNAS
(3) ERICSSON 4449 RRHs
(3) ERICSSON 8843 RRHs

(E) 69'-0" MONOPINE

(N) VERIZON FEEDLINE
(2) HYBRID CABLE (1-5/8")

GRADE (REFERENCE)
ELEV. = 0'-0"

2 NEW TOWER ELEVATION
SCALE: 1/4"=1'-0" (FULL SIZE)
1/8"=1'-0" (11x17)

verizon
3245 158TH AVENUE MS 231
BELLEVUE, WA 98008

CROWN CASTLE
2055 S. STEARMAN DRIVE
CHANDLER, AZ 85286

TOWER ENGINEERING PROFESSIONALS
4710 E ELWOOD ST, STE 9
PHOENIX, AZ 85040
OFFICE: (480) 285-0036
www.tepgroup.net

VERIZON SITE NUMBER:
290438

BU #: 823520
CS_GOODMAN_AND_SONS

17997 SIERRA WAY
MONUMENT, CO 80132

EXISTING 69'-0" MONOPINE

ISSUED FOR:

REV	DATE	DRWN	DESCRIPTION	DES./QA
0	01/19/22	ORG	CONSTRUCTION	HMM

Andrew R. Berglund
Professional Engineer License: #58252
01/19/22

IT IS A VIOLATION OF LAW FOR ANY PERSON, UNLESS THEY ARE ACTING UNDER THE DIRECTION OF A LICENSED PROFESSIONAL ENGINEER, TO ALTER THIS DOCUMENT.

SHEET NUMBER: **C-2** REVISION: **0**