

Cover sheet missing. Include a cover sheet with signature blocks, point of contact, vicinity maps, etc. as required by the ECM.

JPS
 19 E. Minnetonka Ave.
 Minneapolis, MN 55412
 PH: 763-429-9429
 WWW.JPSINC.COM

CALL UTILITY NOTIFICATION
 CENTER OF COLORADO
 1-800-922-1987

NO.	REVISION	BY	DATE

SITE GRADING & EROSION CONTROL PLAN

FALCON FIRE STATION NO. 3

PROJECT NO.	20-279	DATE	NOV 20 2024
PROJECT NAME	20-279	DATE	NOV 20 2024
PROJECT LOCATION	20-279	DATE	NOV 20 2024
PROJECT DRAWN BY	20-279	DATE	NOV 20 2024
PROJECT CHECKED BY	20-279	DATE	NOV 20 2024

C1

GEC SHEET INDEX

C1	SITE GRADING & EROSION CONTROL PLAN
C2.1	CIVIL NOTES & DETAILS
C3.1	DETENTION POND PLAN & DETAILS

KEYED NOTES:

- TOPSOIL STRIPPING / STOCKPILE AREA
- CONCRETE PAVEMENT (PER GEOTECHNICAL REPORT)
- PREPARE & COMPACT BUILDING FOUNDATION, SLABS, & PAVEMENT PER PROJECT GEOTECHNICAL REPORT
- THIS AREA MAINTAIN POSITIVE DRAINAGE TO EXISTING GRADES W/ 3:1 MAX. SLOPES

ESTIMATED EARTHWORK QUANTITY:

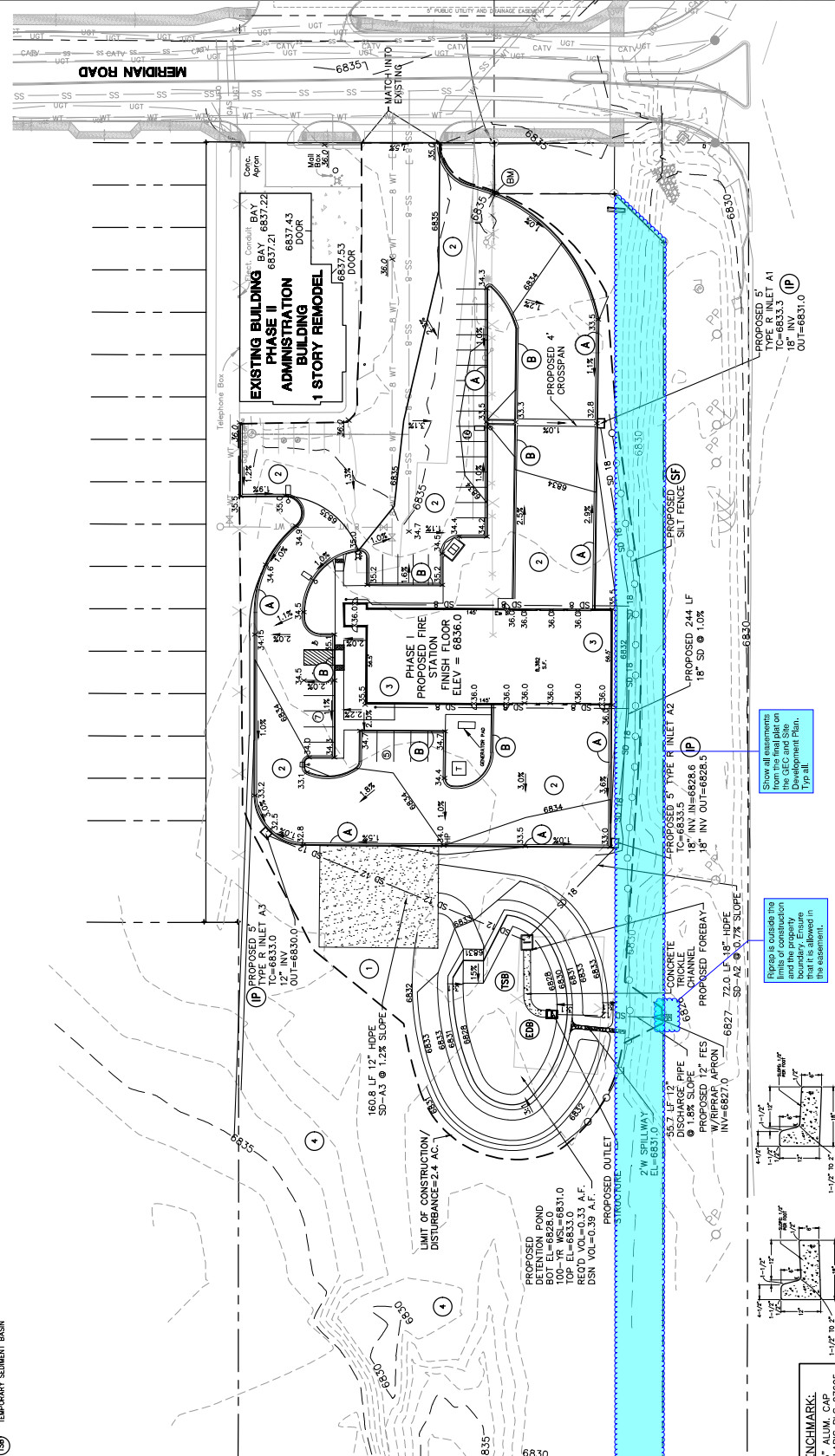
UNCLASSIFIED EXCAVATION (TOTAL CUT) = 602 CY
 * EMBANKMENT (FILL) = 4,687 CY
 NET (FILL) = 4,085 CY

* (ASSUMES 15% COMPACTION FACTOR)

NOTE: THIS ESTIMATE IS PROVIDED FOR INFORMATION ONLY, REPRESENTING THE CALCULATED BULK EARTHWORK VOLUME TO FINISHED GRADE, EXCLUDING ANY ADJUSTMENT FOR PAVEMENT DEPTHS, ETC. CONTRACTOR SHALL MAKE HIS OWN DETERMINATION OF EARTHWORK QUANTITIES AS BASIS FOR BID PRICING AND NOTIFY ENGINEER OF ANY DISCREPANCIES.

EROSION CONTROL LEGEND:

(VC)	VEHICLE TRACKING CONTROL PAD
(SF)	SILT FENCE
(SM)	SEED & MULCH
(SM)	COMPLETELY DISTURBED AREA & SOIL BED PROTECTION (UPON COMPLETION OF PROJECT)
(P)	NET PROTECTION
(RR)	RR/APP APPROX
(S)	STABILIZED STAGING AREA
(DB)	EXTENDED DETENTION BASIN
(TS)	TEMPORARY SEDIMENT BASIN



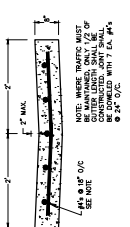
PCD PROJECT NO. XX-20-XXXX

Add PCD File No. PPR-20-024

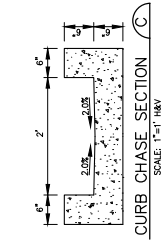
BENCHMARK:
 1" = 10' ALUM. CAP.
 POLARIS PLS 27605
 EL=6835.03
 (NAVD 88)

Show all assumptions from the final plan on the site plan. Do not show on this plan. Typ all.

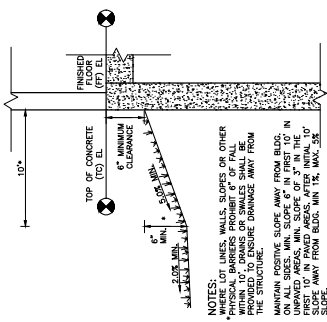
Plan to include the limits of construction and the property boundary. Assume all are as shown on the assessment.



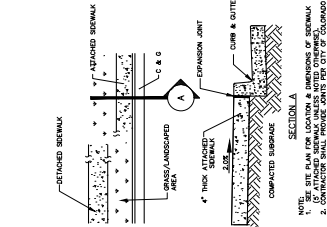
TYPICAL CONCRETE CROSSSPAN A
SCALE: 1" = 1'-0"



CURB CHASE SECTION C
SCALE: 1" = 1'-0"



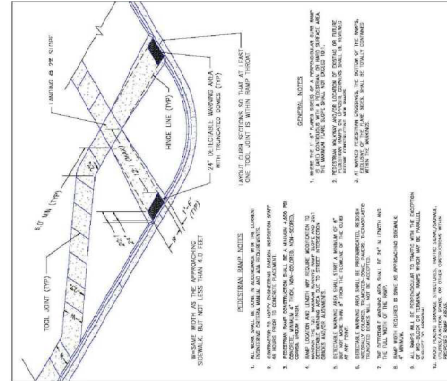
TYPICAL BUILDING DRAINAGE DETAIL D
SCALE: NTS



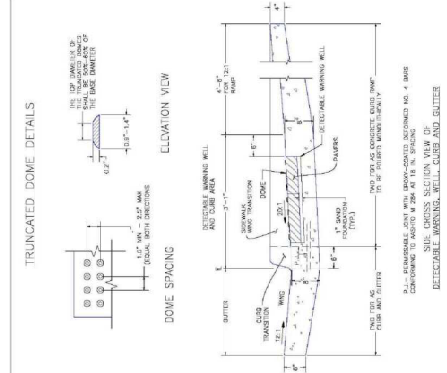
CONCRETE SIDEWALK DETAIL B
SCALE: NTS

GENERAL CIVIL NOTES:

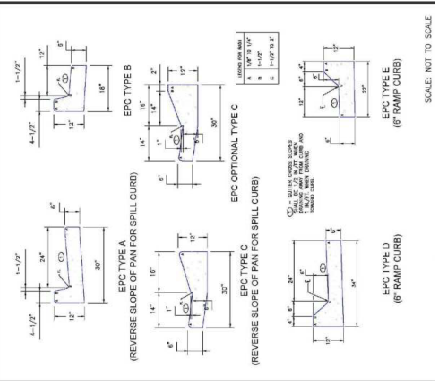
- 2009 International Building Code, latest edition.
- California Health & Safety Code (CHS), latest edition.
- Project Geotechnical Report.
- The contractor shall be responsible for the notification and field location of all existing utilities, whether shown on the plans or not, before beginning construction. Location of existing utilities shall be verified by the contractor prior to actual construction.
- The contractor shall have one (1) signed copy of these approved plans and one (1) copy of the appropriate design and construction specifications on-site at all times.
- Storm drain pipe shall be top class III with class II bedding unless otherwise noted.
- Stitching is at contractor's expense unless otherwise noted. All elevations are from face of curb unless otherwise noted. Lengths shown for storm sewer pipes are to center of manhole.
- Contractor shall coordinate with gas, electric, telephone and cable T.V. utility suppliers for installation of all utilities. Minimum cover for all utilities shall be 36".
- Contractor shall remove and dispose of all existing structures, debris, waste and other unsuitable fill material found within the limits of the project.
- Match this existing grade at 3:1 max cut and fill slopes.
- Revegetation of all disturbed areas shall be done with 4" topsoil and dry land grass seed after fine grading is complete (loachilis seed mix). Erosion control shall consist of silt fence and hay bales as shown on the drawing, and topsoil with grass seed, which will be watered until vegetation has been re-established. Unless noted on this plan the responsibility of the contractor to monitor and replace, upgrade, or rebuild as necessary and vegetation is re-established.
- Contractor shall implement best management practices in a manner that will protect adjacent properties and public facilities from the effects of erosion and sedimentation as a result of construction and earthwork activities within the project site.
- Additional erosion control measures may be required as determined by the field conditions.
- The contractor will use the necessary precautions to protect existing utilities from damage due to this operation. Any damage to the existing utilities shall be repaired at the contractor's expense, and any service disruption shall be repaired by the contractor.
- All basins, sub-basins, and/or base course material shall be composed per the project geotechnical report and County specifications.
- Concrete used in curb and gutter, sidewalks, and crosscurb construction shall meet County criteria.
- All finished grades shall have a minimum 1:100 slope to provide positive drainage.
- Contractor shall obtain all required permits prior to beginning work.



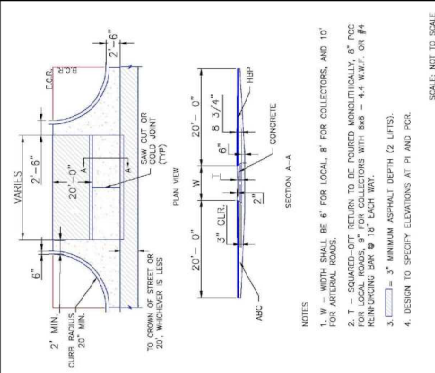
Pedestrian Intersection Ramp
SCALE: 1/8" = 1'-0"



Truncated Dome Details
SCALE: 1/8" = 1'-0"



Typical Curb and Gutter Detailing
SCALE: NOT TO SCALE



Typical Cross Pan Layout Detail
SCALE: NOT TO SCALE

CIVIL NOTES & DETAILS

FALCON FIRE STATION NO. 3

C2.1



70 E. Wainwright Ave
 80003 - Spring, CO
 PH: 719-477-8429
 www.jpsinc.com



CALL UTILITY NOTIFICATION CENTER OF COLORADO
 1-800-922-1987

NO.	REVISION	BY	DATE

PROJECT NO. 045801	DATE: 12/8/15	PROJECT: 87/2/25	LAST MODIFIED: 12/8/15
DRAWN: ANDRÉ P. BRONKHORST	CHECKED: ANDRÉ P. BRONKHORST	SCALE: 1/8" = 1'-0"	DATE: 12/8/15
DESIGNER: ANDRÉ P. BRONKHORST	DATE: 12/8/15	PROJECT: 87/2/25	LAST MODIFIED: 12/8/15
PROJECT: 87/2/25	DATE: 12/8/15	PROJECT: 87/2/25	LAST MODIFIED: 12/8/15

PCD PROJECT NO. XX-20-XXX

FALCON FIRE STATION NO. 3

DETECTION POND A PLAN & DETAILS

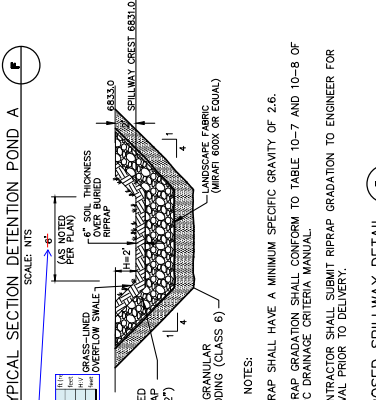
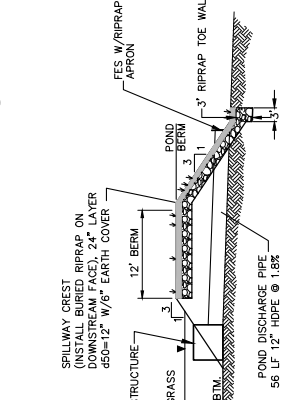
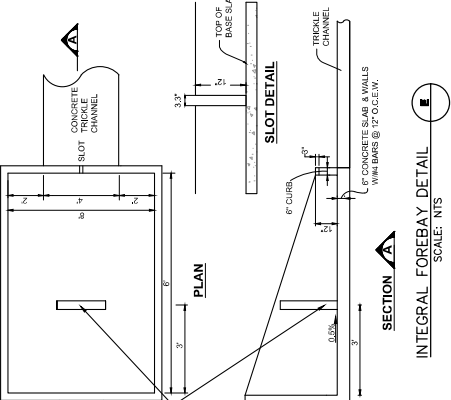
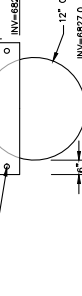
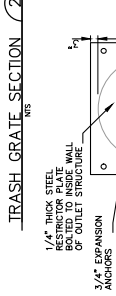
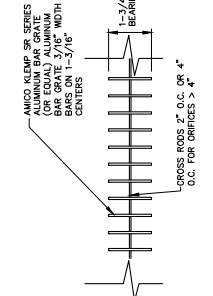
PROJECT NO.	08350
DATE	2/18/25
DESIGNED BY	JPS
DRAWN BY	JPS
CHECKED BY	JPS
APPROVED BY	JPS
PROJECT NO.	08350
DATE	2/18/25
REVISED BY	JPS
DATE	2/18/25
PROJECT NO.	08350
DATE	2/18/25
REVISED BY	JPS
DATE	2/18/25

Provide TSB outlet detail from DCM Val II SB-1 Sediment Basin and provide riser pipe dimensions from the tables.

TEMPORARY SEDIMENT BASIN DESIGN DATA - POND A

Basin	Drainage Area (AC)	Required Volume (AF) (FT)	(IN) Columns	# Rows	#	#
A	2.8	0.1	2.0	9/16"	1	6

* PERFORATIONS AT 4" VERTICAL SPACING

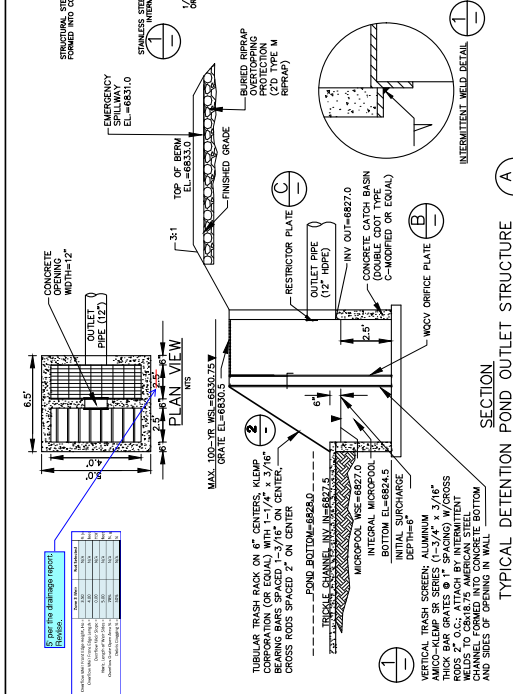
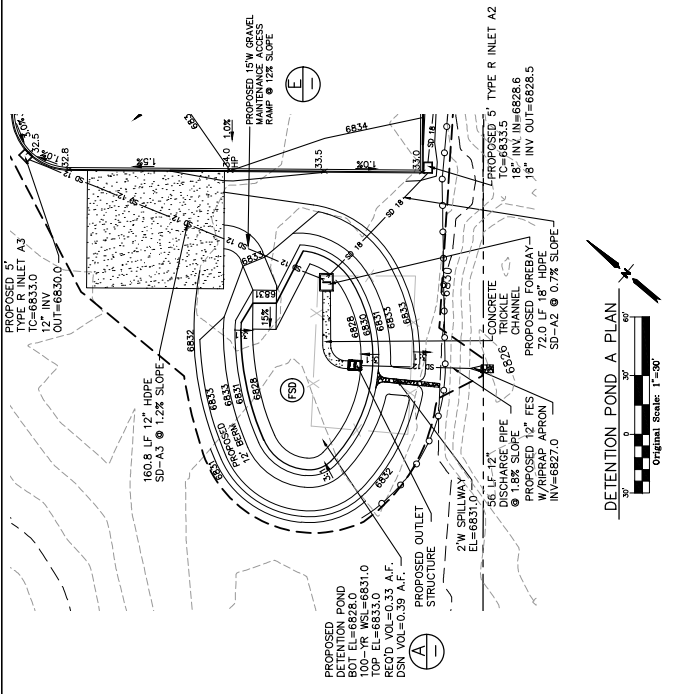


RIPRAP NOTES:

1. RIPRAP SHALL HAVE A MINIMUM SPECIFIC GRAVITY OF 2.6.
2. RIPRAP GRADATION SHALL CONFORM TO TABLE 10-7 AND 10-8 OF THE EPC DRAINAGE CRITERIA MANUAL.
3. CONTRACTOR SHALL SUBMIT RIPRAP GRADATION TO ENGINEER FOR APPROVAL PRIOR TO DELIVERY.

PROPOSED SPILLWAY DETAIL

SCALE: NTS



ORIFICE PLATE AND TRASH RACK DETAILS AND NOTES

1. PROVIDE GASKET MATERIAL BETWEEN THE ORIFICE PLATE AND CONCRETE.
2. BUT PLATE TO CONCRETE 12" MAX. ON CENTER.

NOTE: ORIFICE PLATE WILL NEED TO BE REPLACED FOR FUTURE COMMERCIAL DEVELOPMENT PHASE (PER FORM REPORT)

