

THESE RECORD DRAWINGS HAVE BEEN PREPARED BY KIMLEY-HORN AND ASSOCIATES, INC. BASED ON SURVEY INFORMATION PROVIDED BY MS CIVIL AS WELL AS MEASUREMENTS PROVIDED BY THE GENERAL CONTRACTOR (THE GARRETT COMPANIES). THESE RECORD DRAWINGS ARE NOT GUARANTEED TO BE "AS-BUILT", BUT RATHER BASED ON THE INFORMATION MADE AVAILABLE.

Pay Item	Stone Size d50 <sup>1</sup> (Inches)	Percent of Material Smaller Than Typical Stone <sup>2</sup>	Typical Stone Dimensions <sup>3</sup> (Inches)	Typical Stone Weight <sup>4</sup> (Pounds)
Riprap 6	70-100	12	12	85
	50-70	9	35	35
	35-50	6	10	10
	2-10	2	0.4	0.4
Riprap 9	70-100	15	160	160
	50-70	12	85	85
	35-50	9	35	35
	2-10	3	1.3	1.3
Riprap 12	70-100	21	440	440
	50-70	18	275	275
	35-50	12	85	85
	2-10	4	3	3
Riprap 18	100	30	1280	1280
	50-70	24	650	650
	35-50	18	275	275
	2-10	6	10	10
Riprap 24	100	42	3500	3500
	50-70	33	1700	1700
	35-50	24	650	650
	2-10	9	35	35

<sup>1</sup>d50 = nominal stone size  
<sup>2</sup>based on typical rock mass  
<sup>3</sup>equivalent spherical diameter  
<sup>4</sup>based on a specific gravity = 2.5

Nominal stone size and total thickness of the riprap shall be as shown on the plans.

**Kimley-Horn**  
 2023 KIMLEY-HORN AND ASSOCIATES, INC.  
 2 North Nevada Avenue, Suite 900  
 Colorado Springs, CO 80903 (303) 228-2300

DESIGNED BY: MOH  
 DRAWN BY: JWM  
 DATE: 9/21/2023

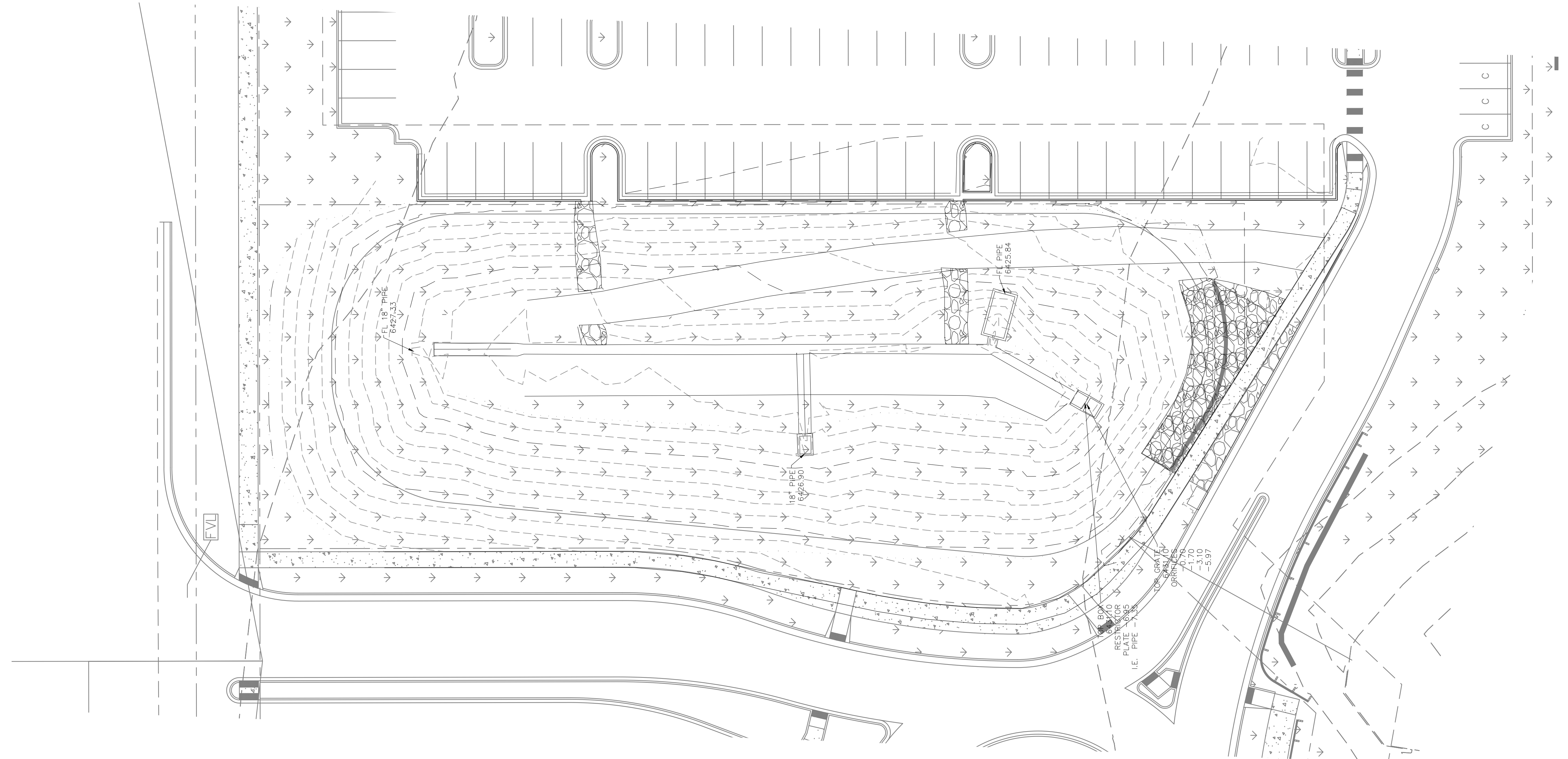
THE CITIZEN ON CONSTITUTION  
 EL PASO COUNTY, COLORADO  
 UTILITY AND WATER SERVICE PLANS  
 DETENTION POND PLAN AND DETAILS

PROJECT NO. 096481004  
 SHEET C4.11

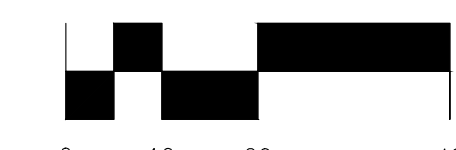
NO.	REVISION	BY	DATE	APPR.
1				
2				

# CITIZEN ON CONSTITUTION

## FINAL POND ASBUILT EXHIBIT



1" = 20'



Scale in Feet

FINAL POND ASBUILT  
CITIZEN ON CONSTITUTION  
JOB NO. 70-115  
DATE PREPARED: 10/07/2024  
DATE REVISED:



212 N. WAHSATCH AVE., STE 305  
COLORADO SPRINGS, CO 80903  
PHONE: 719.955.5485