

**1 PLAN OVERVIEW**  
 G101 SCALE: 1"=1200'

GENERAL NOTES	
1	COORDINATES ARE IN NAD83 COLORADO STATE PLANE, CENTRAL ZONE, US FT.
2	PROPERTY DESCRIPTION: 1236 ACRES INSIDE PROJECT FENCE, SECTIONS 6, 7, 18, 30 AND 31 T16S, R64W, AND SECTIONS 1, 11-14, 23-26, 35 AND 36 T16S, R65W
3	NORTH ARROW CORRESPONDS TO TRUE NORTH AT SITE, NOT SURVEY NORTH

LEGEND	
[Red line]	CSU PARCEL BOUNDARY
[Red dashed line]	PROJECT FENCE
[Yellow line]	SITE ACCESS ROAD
[Grey line]	EXISTING CSU ROAD
[Pink shaded area]	STAGING/PARKING AREA
[Red dashed line]	EXISTING OH UTILITY LINE
[Blue dashed line]	EXISTING UG FIBER OPTIC LINE
[Blue dashed line]	EXISTING UG WATER LINE
[Orange dashed line]	EXISTING NATURAL GAS LINE
[Red dashed line]	UNDERGROUND 34.5KV FEEDER
[Blue dashed line]	FIBER OPTIC (COLOR VARIES BY LOOP)
[Square symbol]	POWER STATION
[Blue grid]	TRACKING ARRAY BLOCK

**juwi**  
 juwi inc.  
 1710 29th St. Suite 1008  
 Boulder, CO 80301  
 www.juwiamericas.com

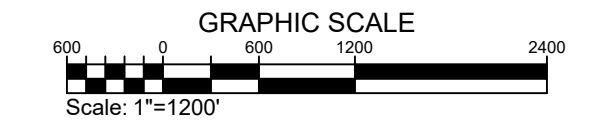
**PIKE SOLAR**  
 219.46 MW PV, 75 MW BESS, 175.00 MW POI  
 EL PASO COUNTY, CO

REVISED: [ ]  
 DRAWN BY: SAM  
 LATEST REV: D

# KINDER MORGAN PIPELINE CROSSINGS

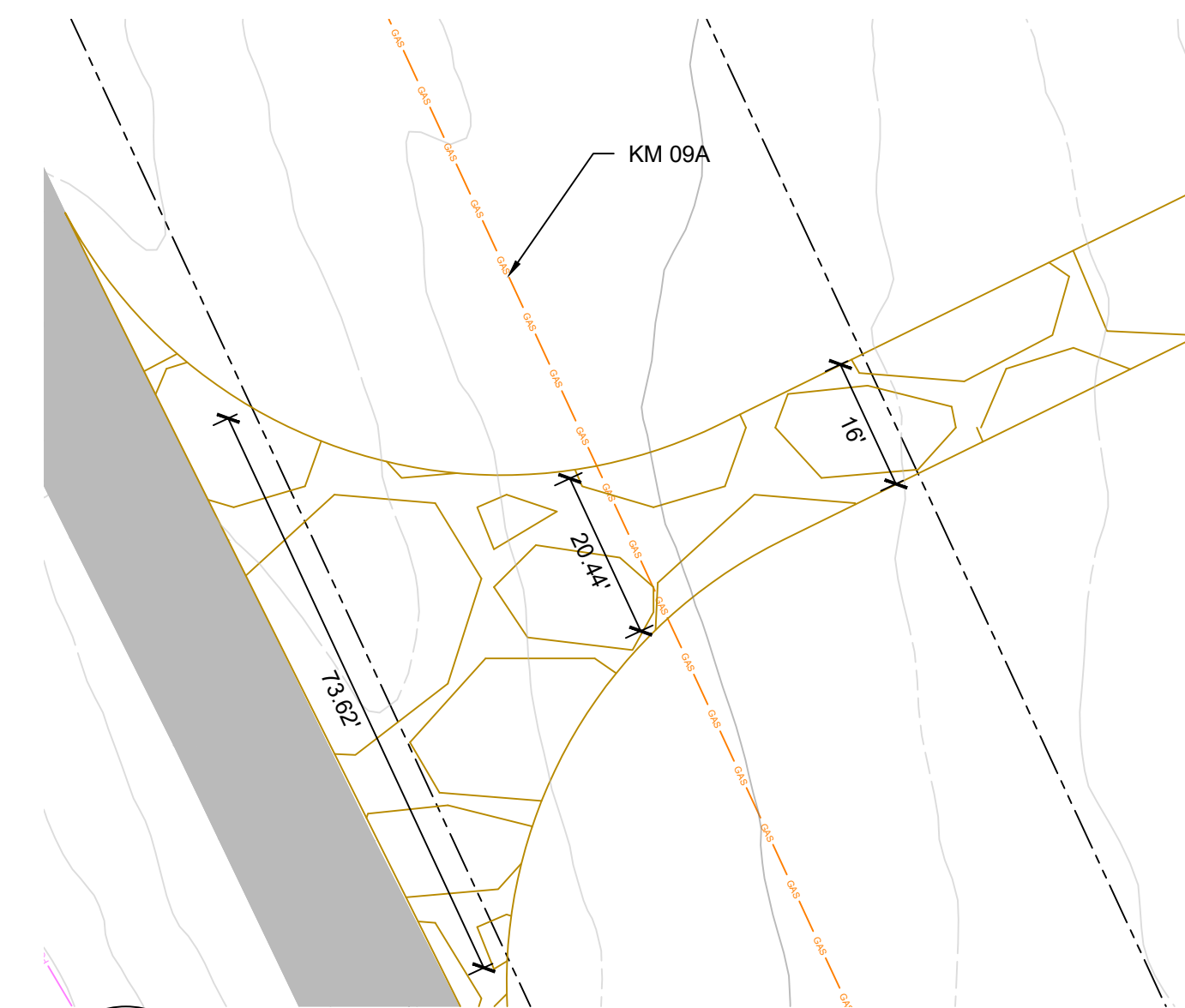
PROPRIETARY AND CONFIDENTIAL  
 NOT BE REPRODUCED OR COPIED  
 PRINT SIZE: ARCH D  
 ISSUED BY: JBL  
 SCALE: 1"=1200'  
 DWG #

**G108**  
 SITE OVERVIEW

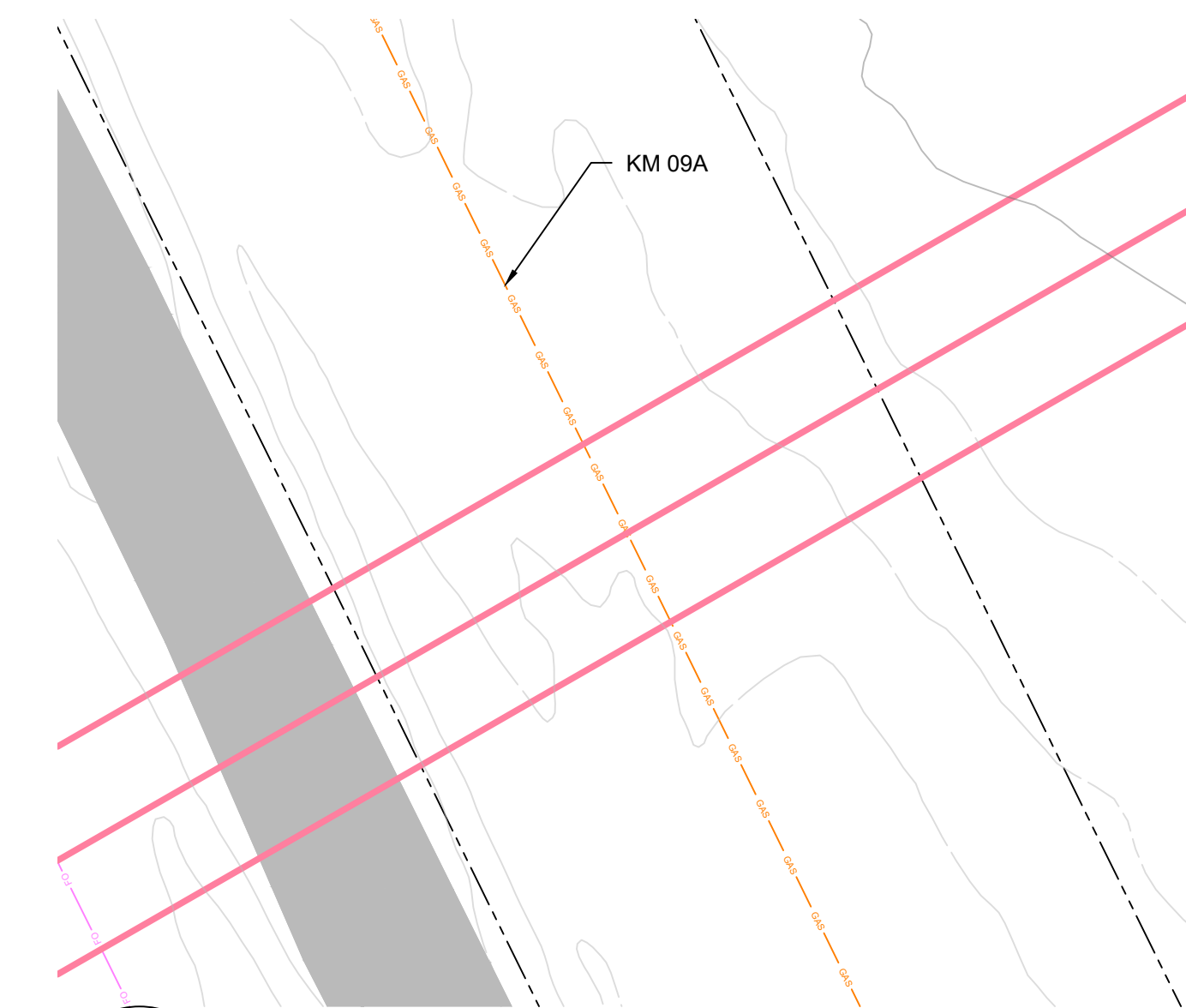


GENERAL NOTES	
1	ALL MV FEEDER CROSSINGS SHALL BE BORED UNDERNEATH EXISTING PIPELINES
2	MINIMUM SEPARATION OF 24" SHALL BE MAINTAINED FROM BOTTOM OF EXISTING PIPE TO TOP OF PROPOSED BORE
3	BORES SHALL REACH SPECIFIED DEPTH AT THE EASEMENT BOUNDARY AND MAINTAIN CONSTANT DEPTH THROUGH THE EXTENTS OF THE EASEMENT
5	ALL GRAVEL ACCESS ROADS ARE 16' WIDE UNLESS NOTED OTHERWISE

LEGEND	
	SITE ACCESS ROAD
	EXISTING CSU ROAD
	STAGING/PARKING AREA
	EXISTING OH UTILITY LINE
	EXISTING UG FIBER OPTIC LINE
	EXISTING UG WATER LINE
	EXISTING NATURAL GAS LINE
	PROPOSED BORE PATH
	KINDER MORGAN EASEMENT EXTENTS



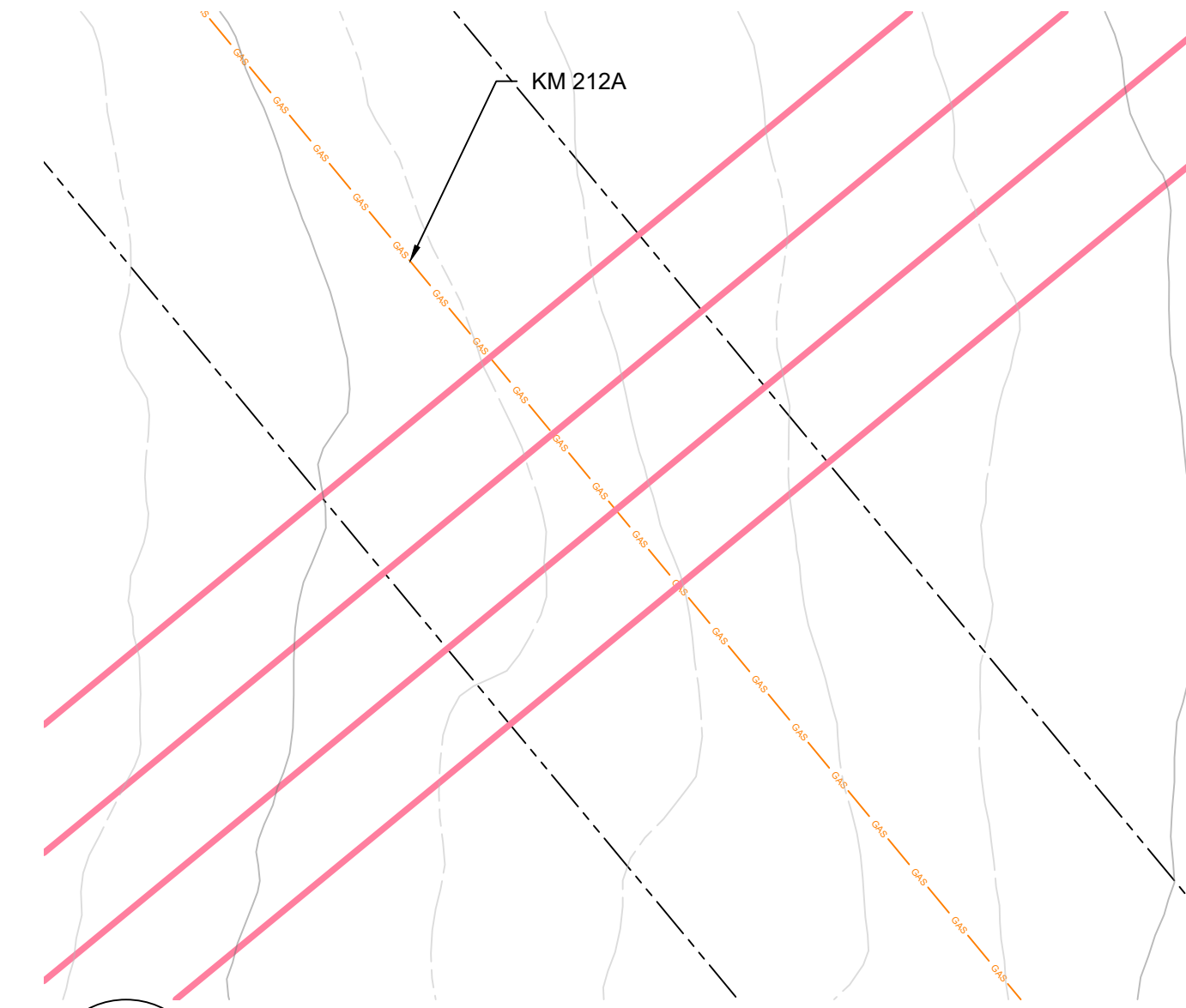
**1 CROSSING #1 - GRAVEL ROAD**  
 G109 SCALE: 1:20



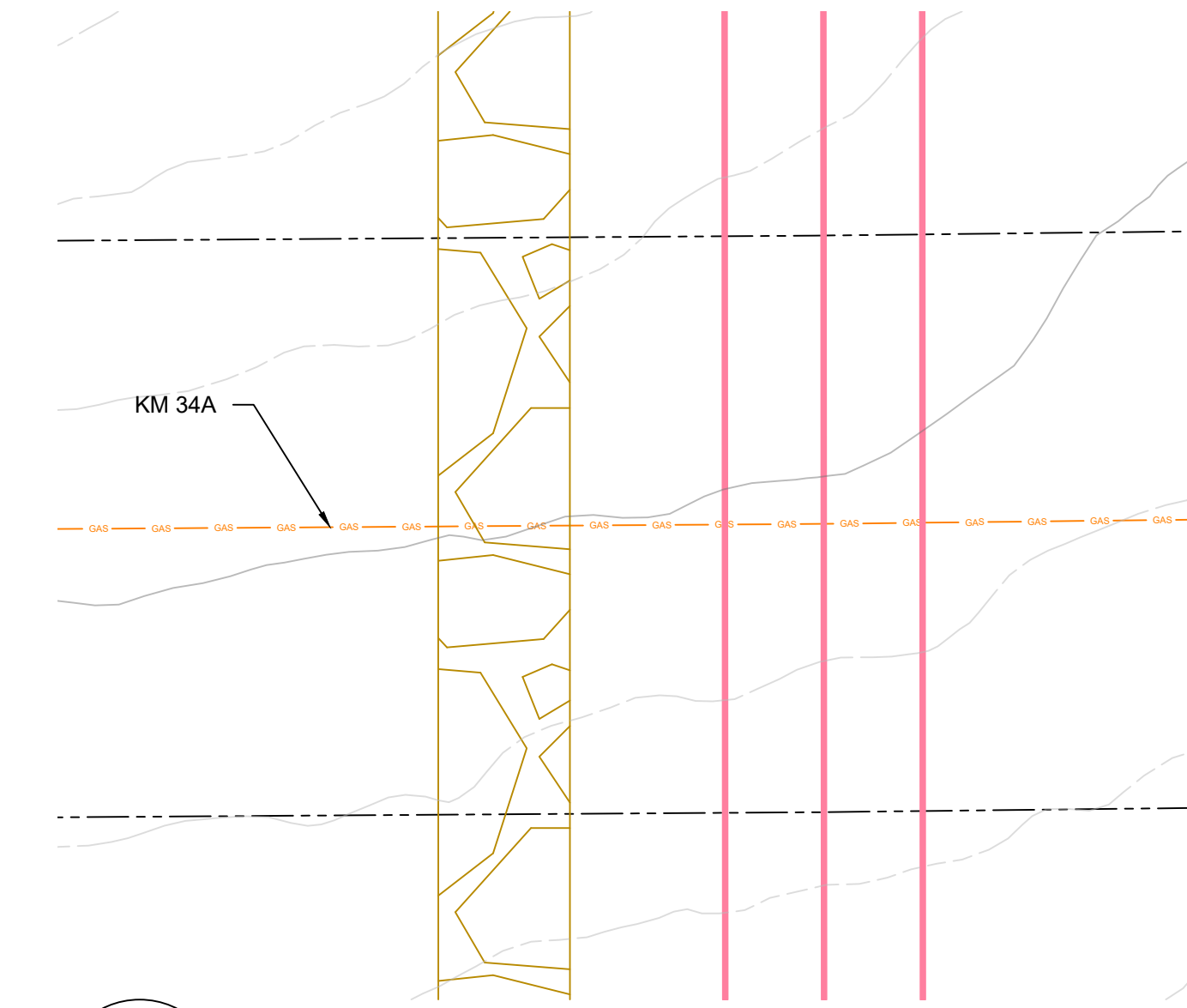
**2 CROSSING #2 - MV FEEDERS**  
 G109 SCALE: 1:20



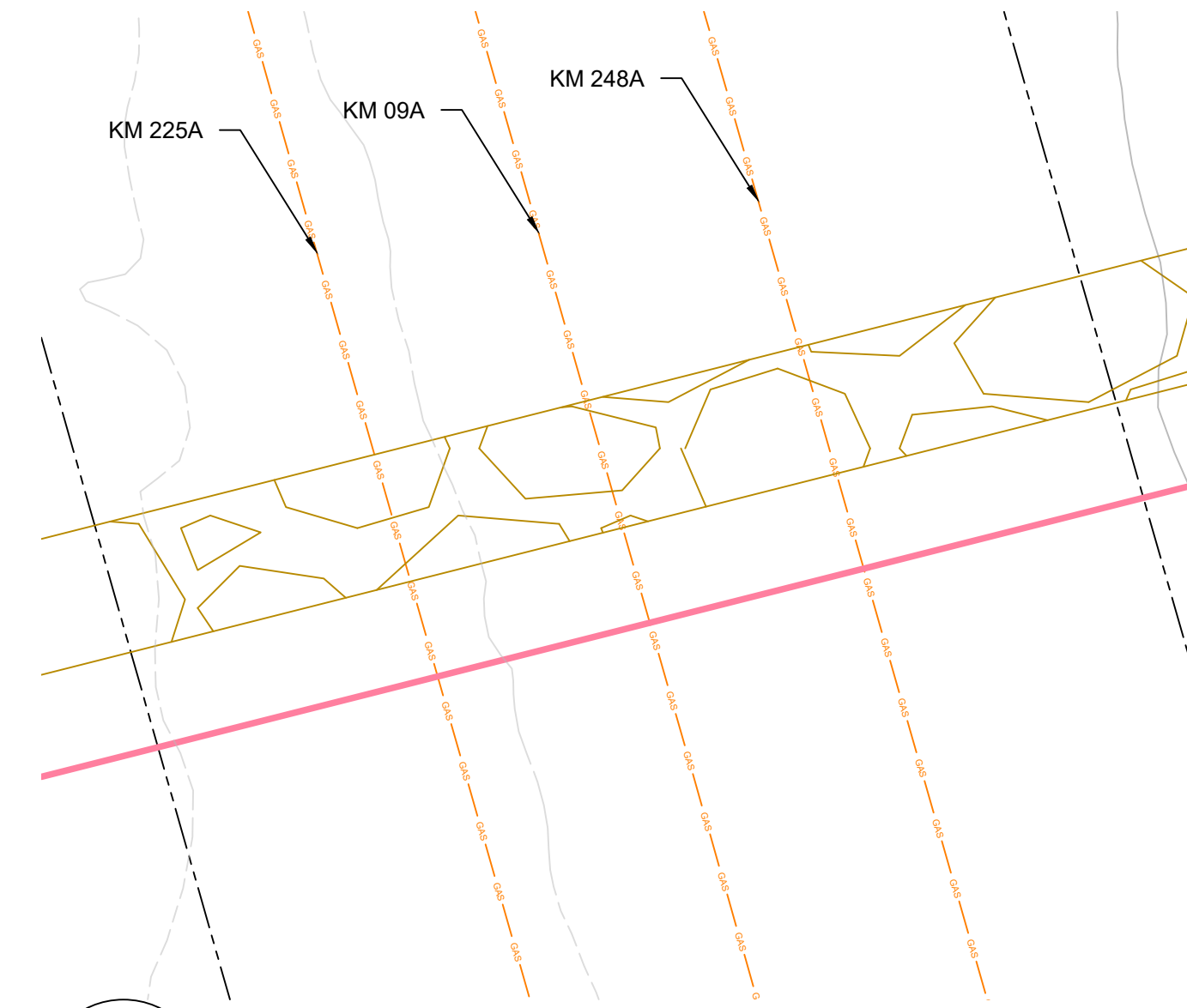
**3 CROSSING #3 - GRAVEL ROAD**  
 G109 SCALE: 1:20



**4 CROSSING #4 - MV FEEDERS**  
 G109 SCALE: 1:20

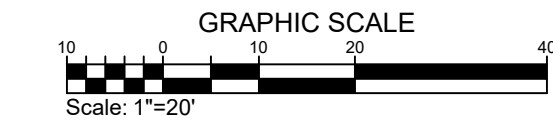


**5 CROSSING #5 - ROAD AND FEEDERS**  
 G109 SCALE: 1:20

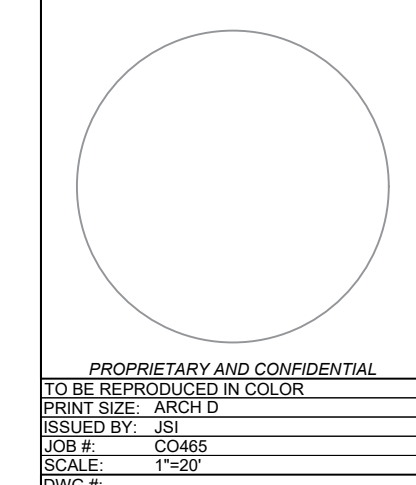


**6 CROSSINGS #6, #7, & #8 - ROAD AND FEEDERS**  
 G109 SCALE: 1:20

POTHOLED KINDER MORGAN (KM) PIPELINE DIMENSIONS AND DEPTHS AT CROSSING LOCATIONS						
Encroachment	Pipe ID	Latitude	Longitude	Surface Elevation (ft)	Pipe Outer Diameter (in)	Depth to top of Pipe (in)
#1 - Road	KM 09A	N38.6665692	W104.6359573	5565	20	48
#2 - Feeders	KM 09A	N38.6618842	W104.6330301	5512	20	48
#3 - Road	KM 212A	N38.6445201	W104.6325073	5520	20	52
#4 - Feeders	KM 212A	N38.6413630	W104.6291902	5508	20	54
#5 - Road and Feeders	KM 34A	N38.6286826	W104.6224002	5430	20	46
#6 - Road and Feeders	KM 225A	N38.6220377	W104.6125327	5391	12	62
#7 - Road and Feeders	KM 09A	N38.6220556	W104.6124426	5391	20	42 to top of 6-8" concrete casing
#8 - Road and Feeders	KM 248A	N38.6220736	W104.6092962	5391	16	60



**KINDER MORGAN  
 PIPELINE CROSSINGS**



**G109**  
 CROSSING PLANS

PROPRIETARY AND CONFIDENTIAL  
 TO BE REPRODUCED IN COLOR  
 PRINT SIZE: ARCH D  
 ISSUE: 08  
 DATE: 04/26/2023  
 SCALE: 1"=20'  
 DWG #:

REVISION NOTES  
 REV. NO. DATE BY DESCRIPTION  
 1 04/26/23 RMC A

DRAWN BY: RMC LATEST REV: A