



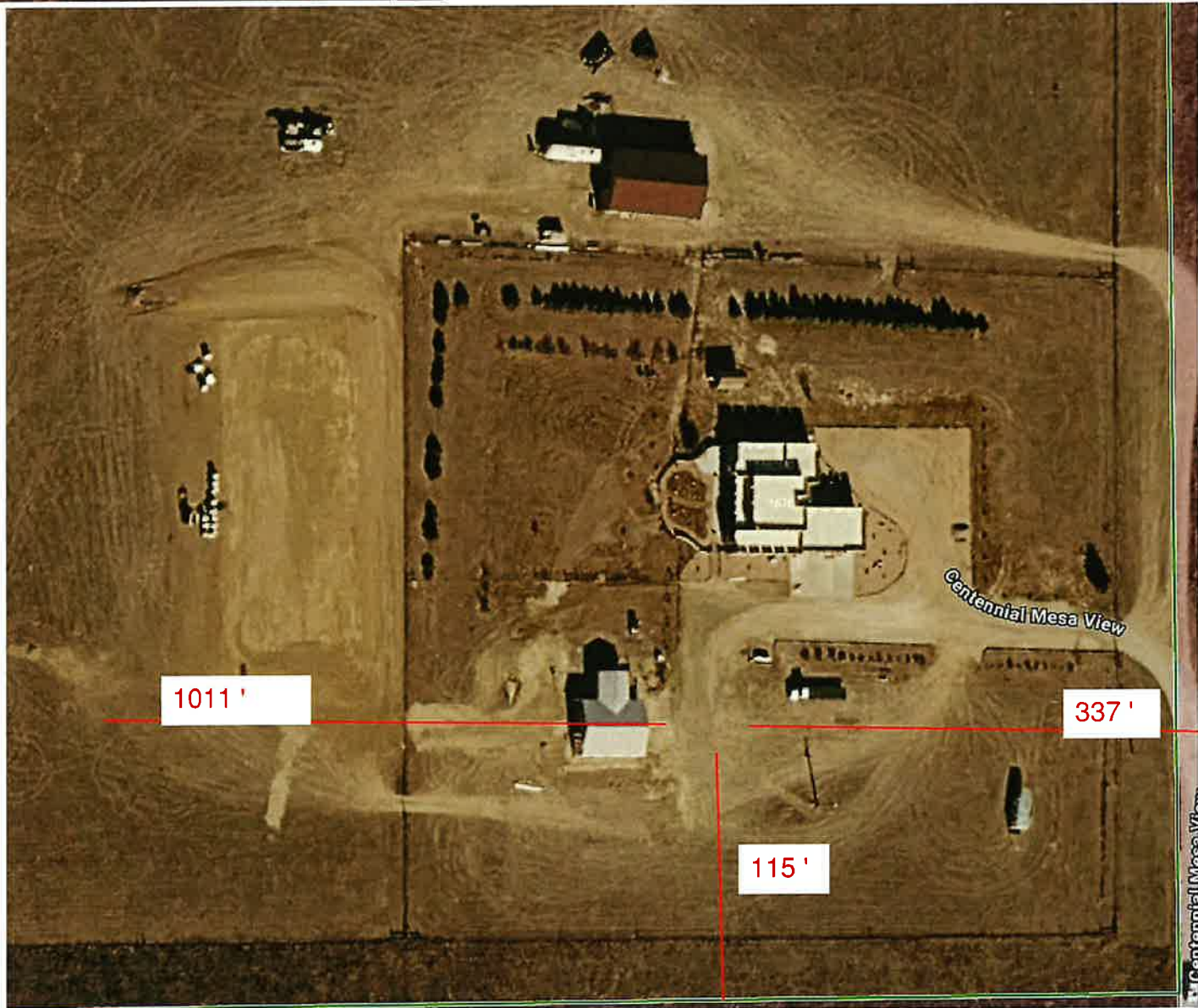
**1670 CENTENNIAL MESA VIEW
ZONING - RR-5
PLAT - 10403**

**LEGAL DESCRIPTION: LOT 3 CENTENNIAL RIDGE
PHASE 2**

PARCEL - 3400000281

ACRES - 35.76

**AG2614
APPROVED 1877
SQ FT BARN**



**APPROVED
Plan Review**

05/26/2026 12:36:59 PM
dsdrangel

**EPC Planning & Community
Development Department**



ANY APPROVAL GIVEN BY
EL PASO COUNTY
DOES NOT OVIATE THE NEED
TO COMPLY WITH APPLICABLE
FEDERAL, STATE, OR LOCAL
LAWS AND/OR REGULATION

Planning & Community Development Department
approval is contingent upon compliance with all
applicable notes on the recorded plat.

An access permit must be granted by the
Planning & Community Development Department
prior to the establishment of any driveway onto a
County road.

Diversion of blockage of any drainage way
is not permitted without approval of the
Planning & Community Development Department



It is the owner's responsibility to
coordinate with easement holders
to avoid impact to utilities that
may be located in the easements.