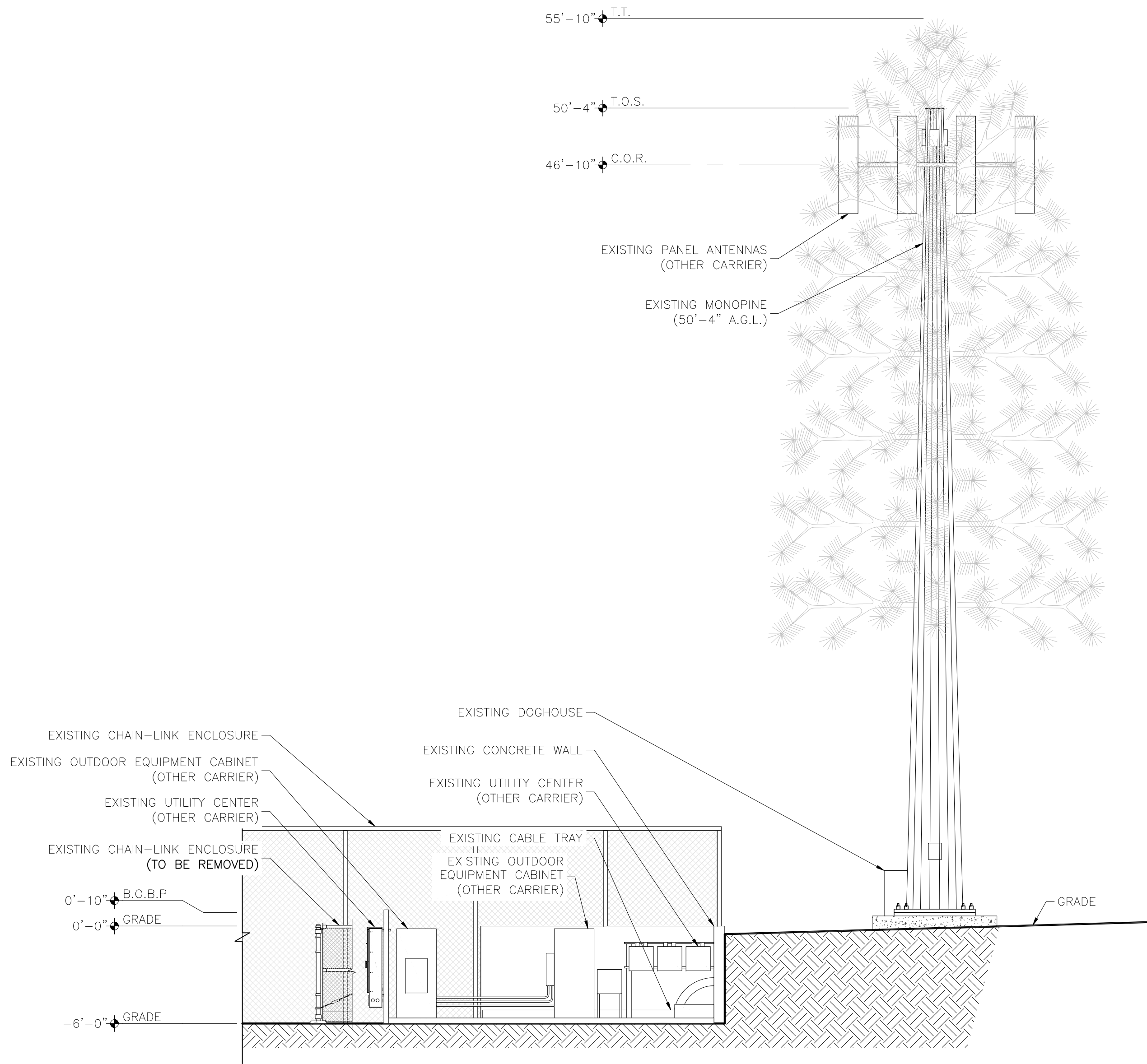
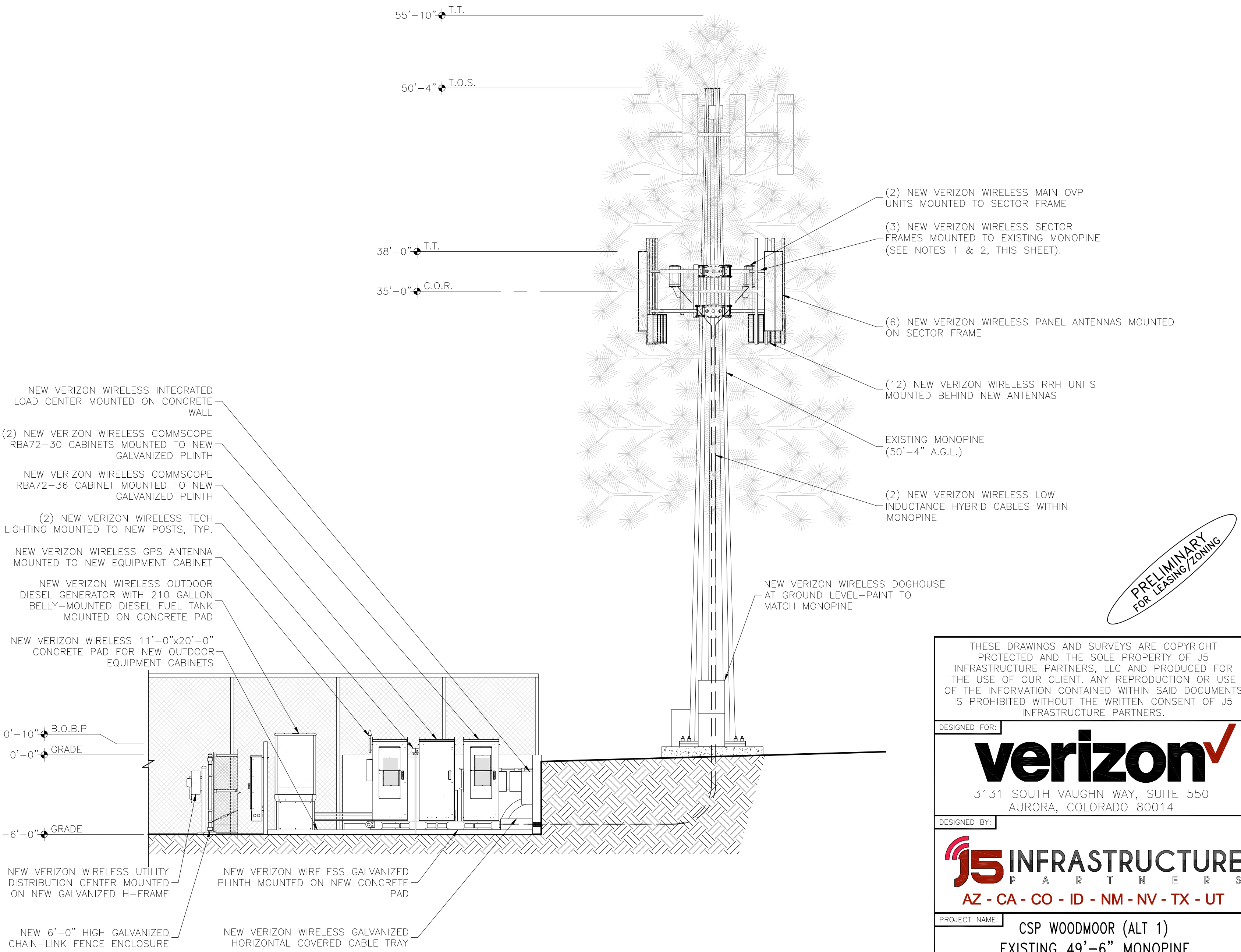


- GENERAL SITE PLAN NOTES:
1. CONTRACTOR TO CUT FACE FRAME FROM 10'-8" TO 8'-8".
 2. CONTRACTOR TO CUT THE TIE BACKS DOWN SO THEY ARE NOT EXTENDING PAST THE MOUNT FACE.

KEY:	
C.O.R. =	CENTER OF RADIATION
A.L. =	ATTACHMENT LEVEL
B.T. =	BOTTOM TIP LEVEL
T.T. =	TOP TIP LEVEL
A.G.L. =	ABOVE GRADE LEVEL
B.O.B.P. =	BOTTOM OF BASE PLATE



EXISTING SOUTHWEST ELEVATION
SCALE: 3/16" = 1'-0"



NEW SOUTHWEST ELEVATION
SCALE: 3/16" = 1'-0"

PRELIMINARY
FOR LEASING/ZONING

THESE DRAWINGS AND SURVEYS ARE COPYRIGHT PROTECTED AND THE SOLE PROPERTY OF J5 INFRASTRUCTURE PARTNERS, LLC AND PRODUCED FOR THE USE OF OUR CLIENT. ANY REPRODUCTION OR USE OF THE INFORMATION CONTAINED WITHIN SAID DOCUMENTS IS PROHIBITED WITHOUT THE WRITTEN CONSENT OF J5 INFRASTRUCTURE PARTNERS.

DESIGNED FOR:

verizon

3131 SOUTH VAUGHN WAY, SUITE 550
AURORA, COLORADO 80014

DESIGNED BY:

J5 INFRASTRUCTURE PARTNERS
AZ - CA - CO - ID - NM - NV - TX - UT

PROJECT NAME:

CSP WOODMOOR (ALT 1)
EXISTING 49'-6" MONOPINE
(OVERALL HEIGHT: 55'-10" A.G.L.)
COLLOCATION COMMUNICATION SITE

PROJECT ADDRESS:

18975 PEBBLE BEACH WAY
MONUMENT COLORADO 80120
EL PASO COUNTY

SHEET TITLE:

ELEVATIONS

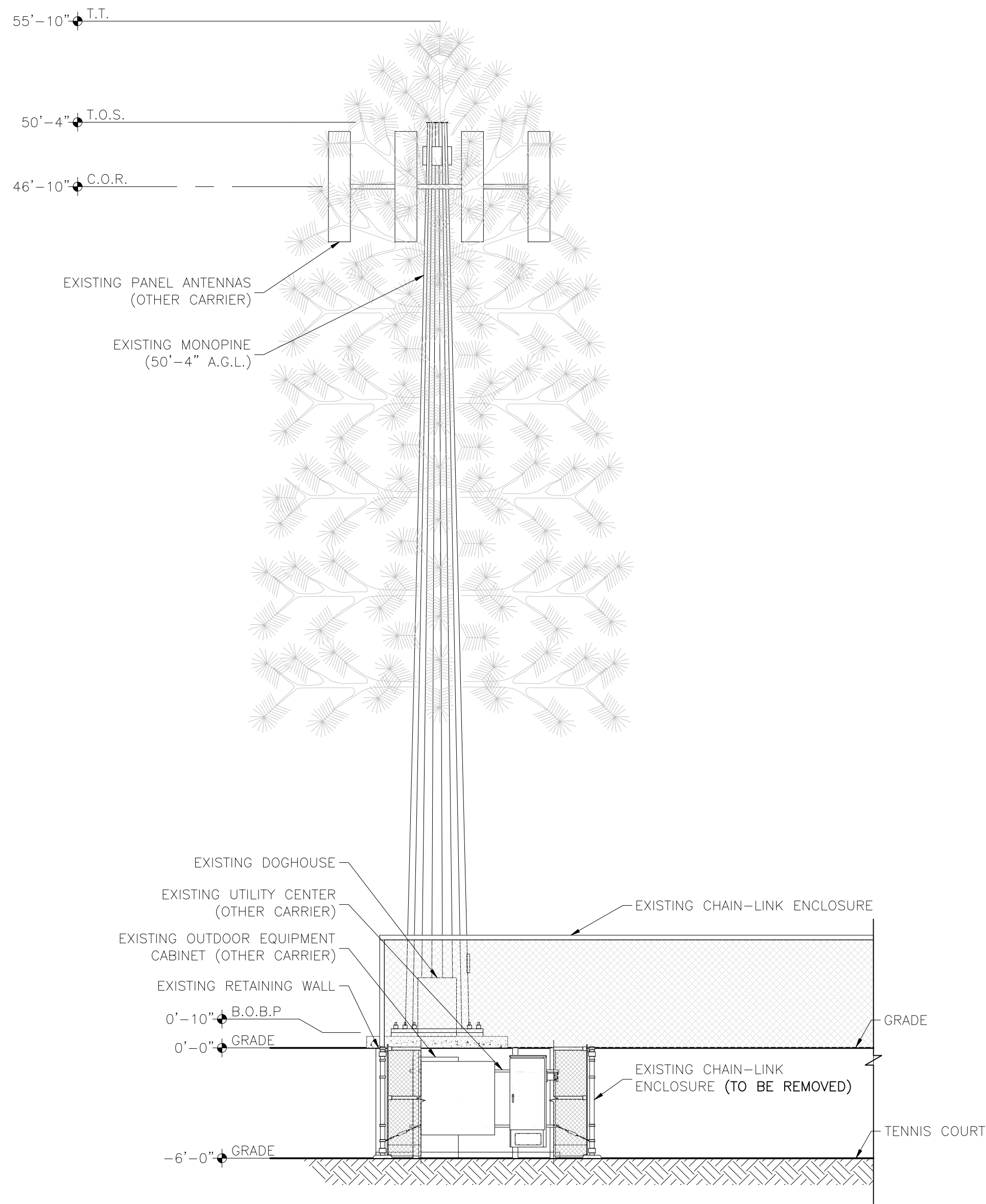
REV	DESCRIPTION	DATE	BY	CHK
A	PRELIMINARY - FOR LEASING & ZONING	05/22/17	RT	-

SAVE DATE:

5/22/2017 2:01 PM

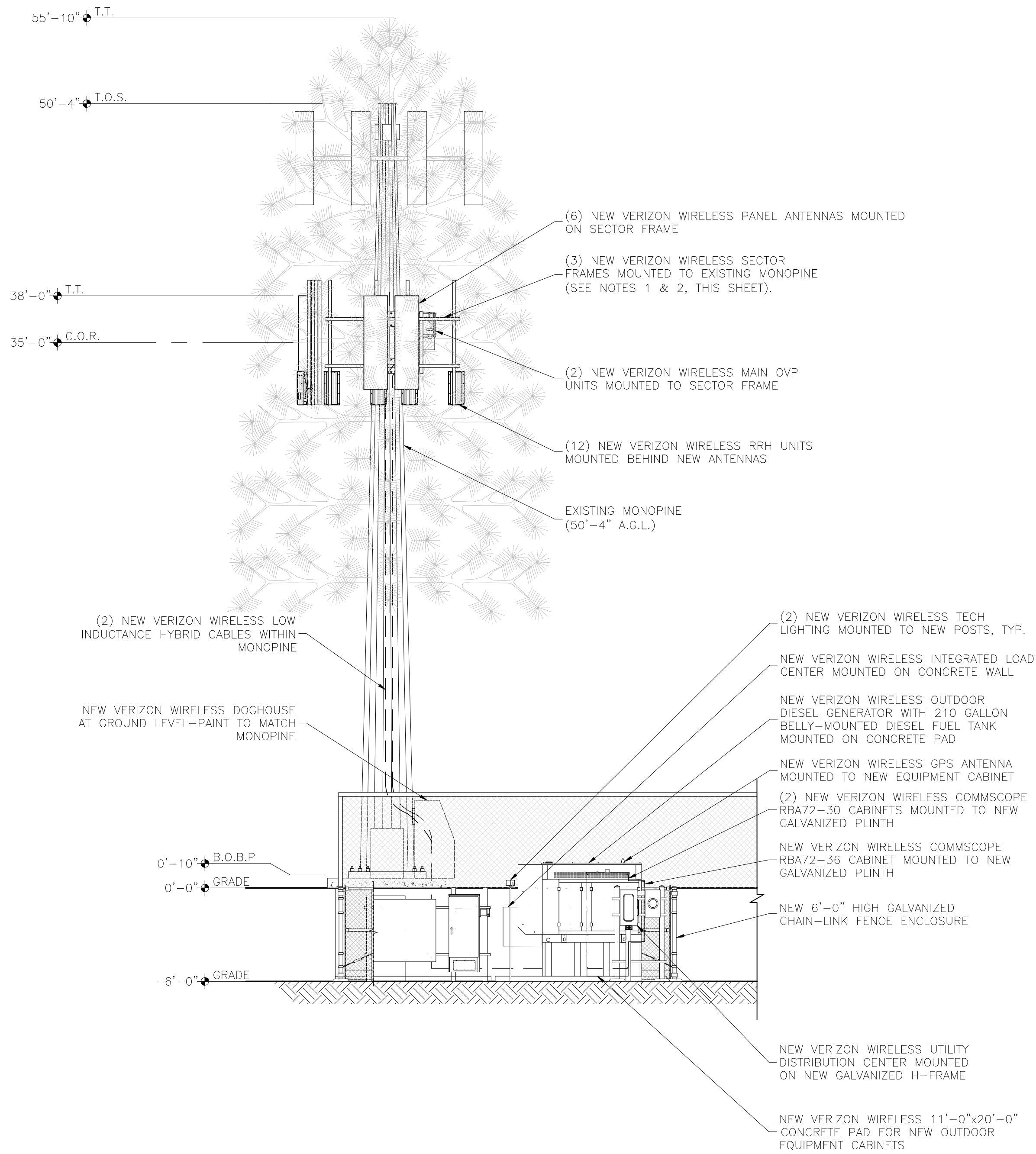
SHEET NUMBER:

23



EXISTING NORTHWEST ELEVATION
SCALE: 3/16" = 1'-0"

- GENERAL SITE PLAN NOTES:
1. CONTRACTOR TO CUT FACE FRAME FROM 10'-8" TO 8'-8".
 2. CONTRACTOR TO CUT THE TIE BACKS DOWN SO THEY ARE NOT EXTENDING PAST THE MOUNT FACE.



NEW NORTHWEST ELEVATION
SCALE: 3/16" = 1'-0"

KEY:	
C.O.R. =	CENTER OF RADIATION
A.L. =	ATTACHMENT LEVEL
B.T. =	BOTTOM TIP LEVEL
T.T. =	TOP TIP LEVEL
A.G.L. =	ABOVE GRADE LEVEL
B.O.B.P. =	BOTTOM OF BASE PLATE

PRELIMINARY
for LEASING/ZONING

THESE DRAWINGS AND SURVEYS ARE COPYRIGHT PROTECTED AND THE SOLE PROPERTY OF J5 INFRASTRUCTURE PARTNERS, LLC AND PRODUCED FOR THE USE OF OUR CLIENT. ANY REPRODUCTION OR USE OF THE INFORMATION CONTAINED WITHIN SAID DOCUMENTS IS PROHIBITED WITHOUT THE WRITTEN CONSENT OF J5 INFRASTRUCTURE PARTNERS.

DESIGNED FOR:

verizon

3131 SOUTH VAUGHN WAY, SUITE 550
AURORA, COLORADO 80014

DESIGNED BY:

J5 INFRASTRUCTURE

PARTNERS
AZ - CA - CO - ID - NM - NV - TX - UT

PROJECT NAME: CSP WOODMOOR (ALT 1)
EXISTING 49'-6" MONOPINE
(OVERALL HEIGHT: 55'-10" A.G.L.)
COLLOCATION COMMUNICATION SITE

PROJECT ADDRESS: 18975 PEBBLE BEACH WAY
MONUMENT COLORADO 80120
EL PASO COUNTY

SHEET TITLE: ELEVATIONS

REV	DESCRIPTION	DATE	BY	CHK
A	PRELIMINARY - FOR LEASING & ZONING	05/22/17	RT	-

SAVE DATE: 5/22/2017 2:01 PM

SHEET NUMBER: Z4