



COMMISSIONERS:
MARK WALLER (CHAIR)
LONGINOS GONZALEZ, JR. (VICE-CHAIR)

COLORADO

HOLLY WILLIAMS
STAN VANDERWERF
CAMI BREMER

PLANNING AND COMMUNITY DEVELOPMENT DEPARTMENT
CRAIG DOSSEY, EXECUTIVE DIRECTOR

February 14, 2019

RE: Administrative Special Use Request for Contractor's Equipment Yard

File: AL-18-019

Parcel ID: 54062-04-044

To Whom It May Concern:

This letter is to inform property owners adjacent to 6230 Lakeshore Court that they have requested a special use to allow for a contractor's equipment yard within the I-2 (Limited Industrial) zoning district. The Planning and Community Development Director may make a formal decision regarding the request on February 28, 2019 at 4:30 P.M. Any comments or questions may be forwarded to me prior to that decision. At the discretion of the Planning and Community Development Director, the approval process may be elevated to the Board of County Commissioners for consideration. Administrative approval by the Planning and Community Development Director is subject to the appeal provisions of the Land Development Code.

You may view the application documents online at www.epcdevplanreview.com. Please feel free to contact me with any questions, comments, or concerns you may have prior to the decision.

Respectfully,

Len Kendall, Planner I
El Paso County Planning and Community Development
719-520-6447
lenkendall@elpasoco.com

*copied, mailed
2/15/2019 JC*

2880 INTERNATIONAL CIRCLE, SUITE 110
PHONE: (719) 520-6300



COLORADO SPRINGS, CO 80910-3127
FAX: (719) 520-6695

WWW.ELPASOCO.COM

El Paso County Parcel Information

File Name: AL-18-019

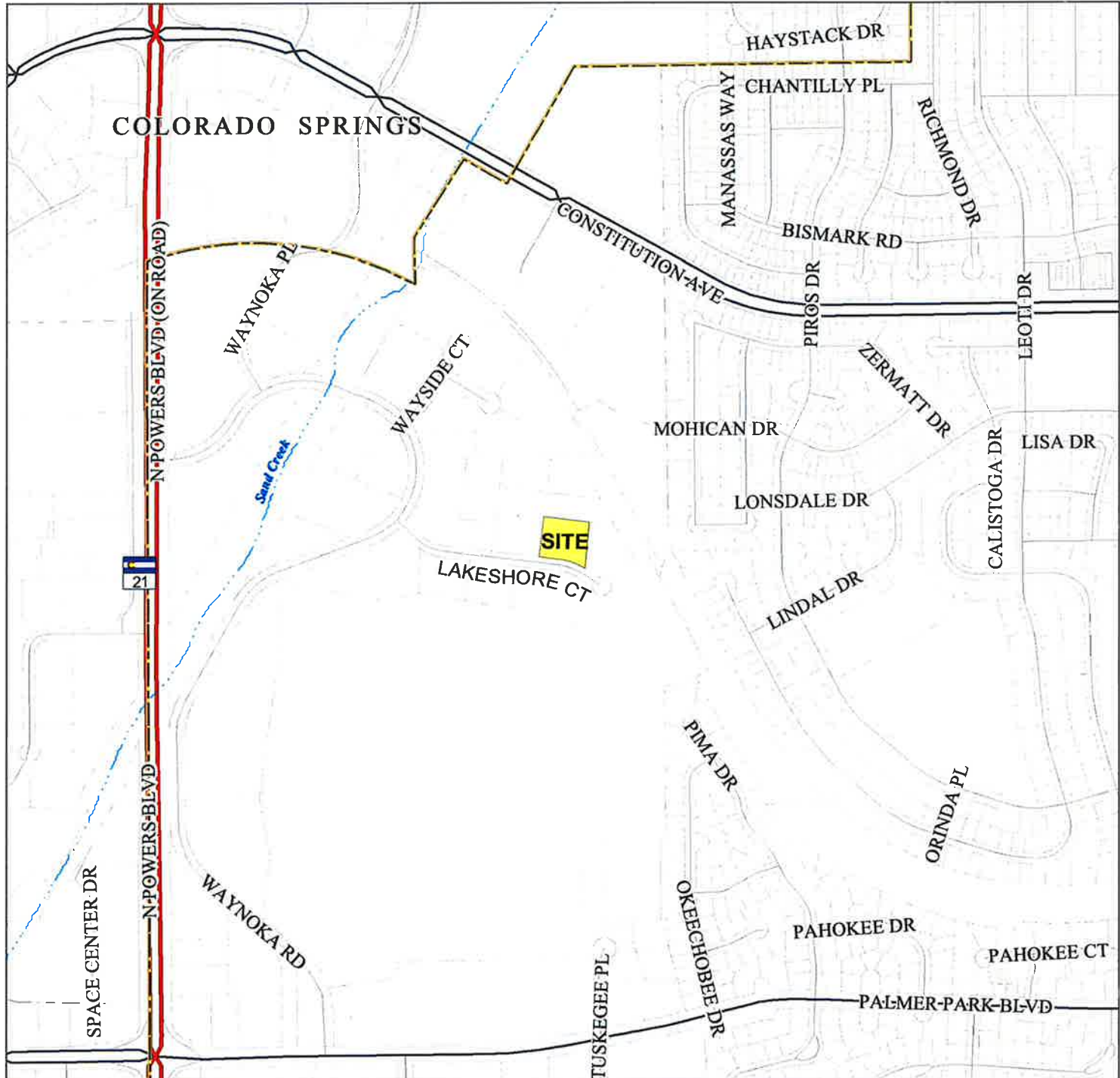
Zone Map No. --

PARCEL	NAME
5406204044	LAKE SHORE INVESTMENTS LLC

ADDRESS	CITY	STATE
6230 LAKE SHORE CT	COLORADO SPRINGS	CO

ZIP	ZIPLUS
80915	1610

Date: FEBRUARY 15, 2019



Please report any parcel discrepancies to:
El Paso County Assessor
1675 W. Garden of the Gods Rd.
Colorado Springs, CO 80907
(719) 520-6600



COPYRIGHT 2018 by the Board of County Commissioners, El Paso County, Colorado. All rights reserved. No part of this document or data contained hereon may be reproduced, used to prepare derivative products, or distributed without the specific written approval of the Board of County Commissioners, El Paso County, Colorado. This document was prepared from the best data available at the time of printing. El Paso County, Colorado, makes no claim as to the completeness or accuracy of the data contained hereon.

5406204045
KING LYLE T
6240 LAKE SHORE CT
COLORADO SPRINGS, CO 80915

5406204044
LAKE SHORE INVESTMENTS LLC
6230 LAKE SHORE CT
COLORADO SPRINGS, CO 80915

5406204034
LAND ACQUISITION LLC
6472 S QUEBEC ST
ENGLEWOOD, CO 80111

5406204038
OUTLOOK INVESTMENTS LLC
6160 LAKE SHORE CT
COLORADO SPRINGS, CO 80915

5406204039
POLKOW LLC
19485 DRACO DR
MONUMENT, CO 80132

5406204043
WILLIAMS JEROME
2040 NIELSEN CT
COLORADO SPRINGS, CO 80906