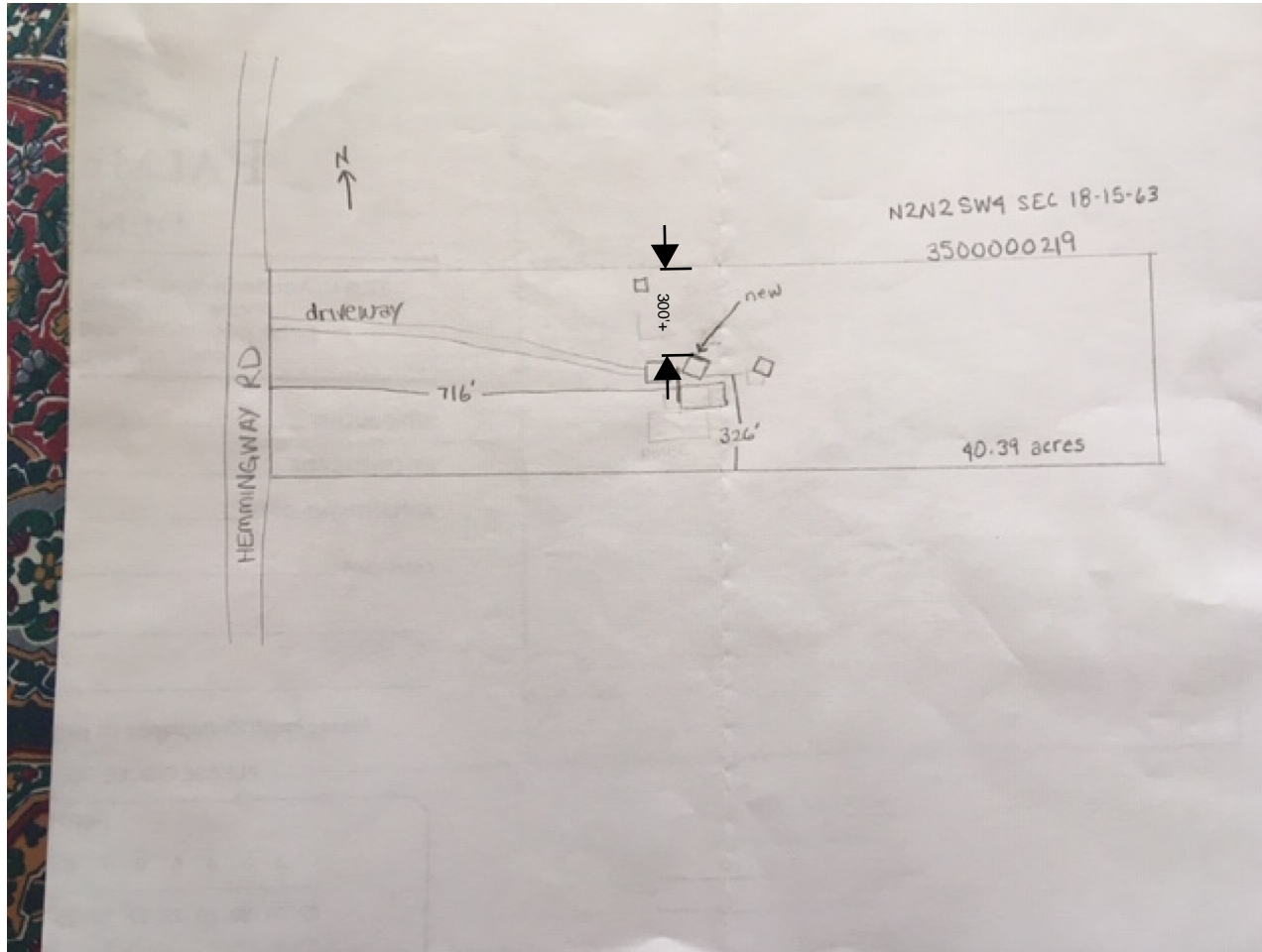


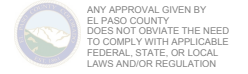
5975 HEMMINGWAY RD
RR-5
40.39 ACRES
AG2031
528 SQ FT BARN WITH OVERHANG



**APPROVED
Plan Review**

08/06/2020 10:06:05 AM
dsdrangel

EPC Planning & Community
Development Department



Planning & Community Development Department
approval is contingent upon compliance with all
applicable notes on the recorded plat.

An access permit must be granted by the
Planning & Community Development Department
prior to the establishment of any driveway onto a
County road.

Diversion of blockage of any drainage way
is not permitted without approval of the
Planning & Community Development Department

**Not Required
BESQCP**

08/06/2020 10:06:17 AM
dsdrangel

EPC Planning & Community
Development Department

