

INSTALLER NOTE:

1. EXISTING AND PROPOSED ANTENNA/EQUIPMENT POSITIONING SHOWN PER RFDS. FIELD CONDITIONS MAY VARY.
2. GC IS TO CAMOUFLAGE PROPOSED ANTENNAS AS REQUIRED BY AUTHORITY HAVING JURISDICTION. GC TO COORDINATE WITH VERIZON CM TO CONFIRM CAMOUFLAGE METHOD DOES NOT OBSTRUCT SUB6 ANTENNA RF SIGNAL.

TOWER ANALYSIS NOTES:

1. THE DESIGN DEPICTED IN THESE DRAWINGS IS VALID WHEN ACCOMPANIED BY A CORRESPONDING PASSING TOWER ANALYSIS.
2. CONSTRUCTION MANAGER / GENERAL CONTRACTOR SHALL REVIEW THE TOWER ANALYSIS FOR ANY CONDITIONS PRIOR TO INSTALLATION.
3. ANY REQUIRED TOWER MODIFICATION DESIGN OR TOWER REPLACEMENT SHALL BE APPROVED BY EOR.

MOUNT ANALYSIS NOTES:

1. THE DESIGN DEPICTED IN THESE DRAWINGS IS VALID WHEN ACCOMPANIED BY A CORRESPONDING PASSING MOUNT ANALYSIS.
2. CONSTRUCTION MANAGER / GENERAL CONTRACTOR SHALL REVIEW THE MOUNT ANALYSIS FOR ANY CONDITIONS PRIOR TO INSTALLATION.
3. ANY REQUIRED MOUNT MODIFICATION DESIGN OR MOUNT REPLACEMENT SHALL BE APPROVED BY EOR.

verizon
3245 158TH AVENUE MS 231
BELLEVUE, WA 98008

CROWN CASTLE
2055 S. STEARMAN DRIVE
CHANDLER, AZ 85286

TOWER ENGINEERING PROFESSIONALS
4710 E. ELWOOD ST., STE 9
PHOENIX, AZ 85040
OFFICE: (480) 285-0036
www.tepgroup.net


VERIZON SITE NUMBER:
171393

BU #: 877090
FILL-IN/ COLORADO SPGS/
CSP154

8150 BLACK FOREST RD
COLORADO SPRINGS,
CO 80920

EXISTING 70'-0"
SELF-SUPPORT

ISSUED FOR:				
REV	DATE	DRWN	DESCRIPTION	DES./QA
0	01/20/22	PW	CONSTRUCTION	HMM
1	03/30/22	ODS	CONSTRUCTION	HMM
2	04/12/22	PSS	CONSTRUCTION	HMM
3	04/21/22	KAS	CONSTRUCTION	HMM


04/21/22

Andrew R. Berglund, P.E.
Professional Engineer License: #58272

IT IS A VIOLATION OF LAW FOR ANY PERSON,
UNLESS THEY ARE ACTING UNDER THE DIRECTION
OF A LICENSED PROFESSIONAL ENGINEER,
TO ALTER THIS DOCUMENT.

SHEET NUMBER:
C-2

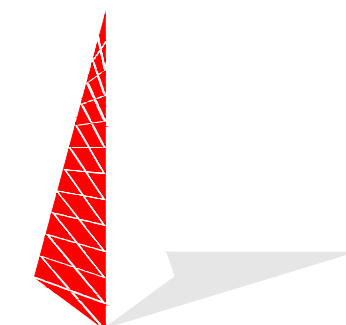
REVISION:
3

verizon

3245 158TH AVENUE MS 231
BELLEVUE, WA 98008

**CROWN
CASTLE**

2055 S. STEARMAN DRIVE
CHANDLER, AZ 85286



TOWER ENGINEERING PROFESSIONALS
4710 E ELWOOD ST, STE 9
PHOENIX, AZ 85040
OFFICE: (480) 285-0036
www.tepgroup.net

VERIZON SITE NUMBER:
171393

BU #: **877090**
**FILL-IN/ COLORADO SPGS/
CSP154**

8150 BLACK FOREST RD
COLORADO SPRINGS,
CO 80920

EXISTING 70'-0"
SELF-SUPPORT

ISSUED FOR:

REV	DATE	DRWN	DESCRIPTION	DES./QA
0	01/20/22	PW	CONSTRUCTION	HMM
1	03/30/22	ODS	CONSTRUCTION	HMM
2	04/12/22	PSS	CONSTRUCTION	HMM
3	04/21/22	KAS	CONSTRUCTION	HMM



04/21/22

Andrew R. Berglund, P.E.
Professional Engineer License: #58272

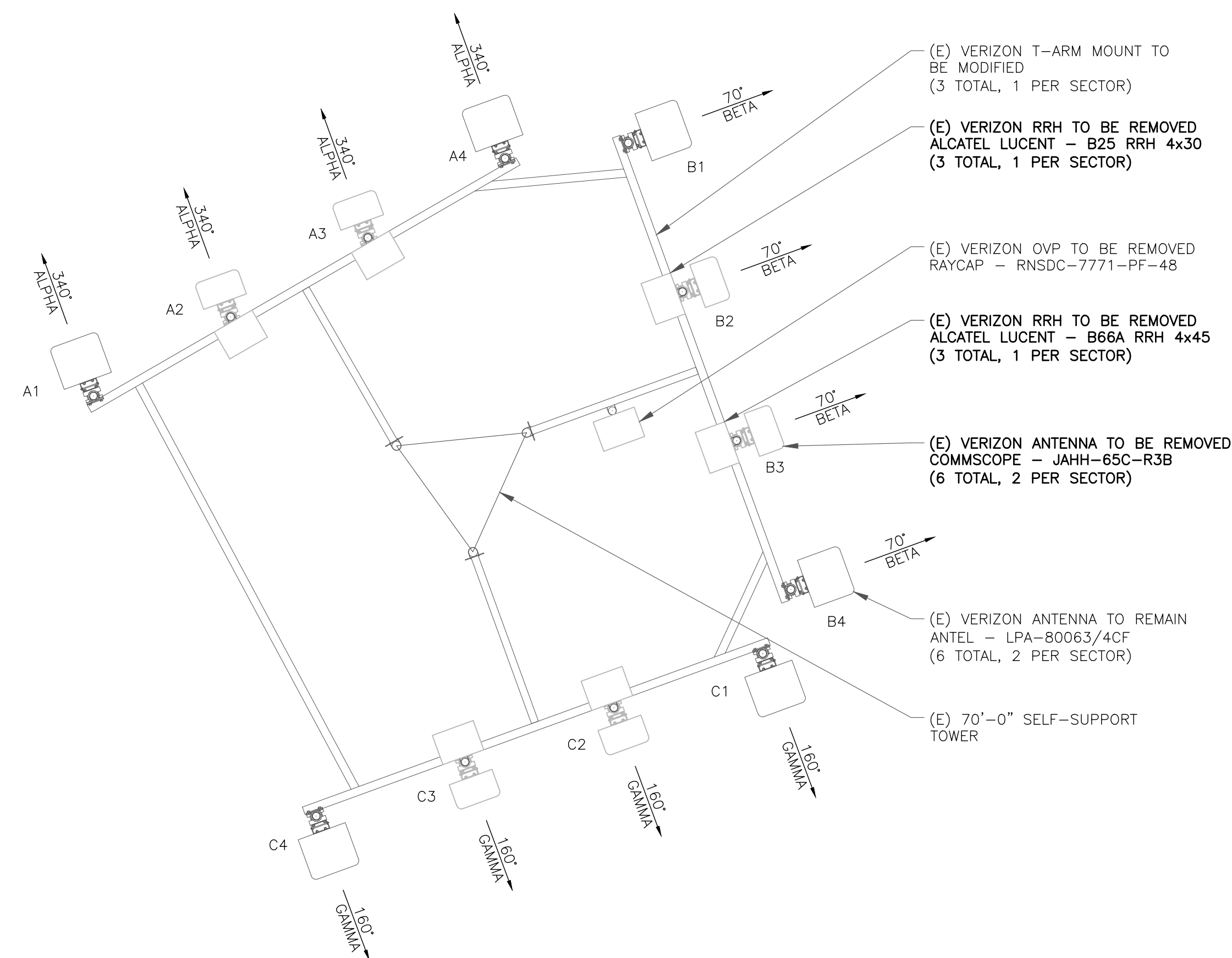
IT IS A VIOLATION OF LAW FOR ANY PERSON,
UNLESS THEY ARE ACTING UNDER THE DIRECTION
OF A LICENSED PROFESSIONAL ENGINEER,
TO ALTER THIS DOCUMENT.

SHEET NUMBER:

C-3

REVISION:

3

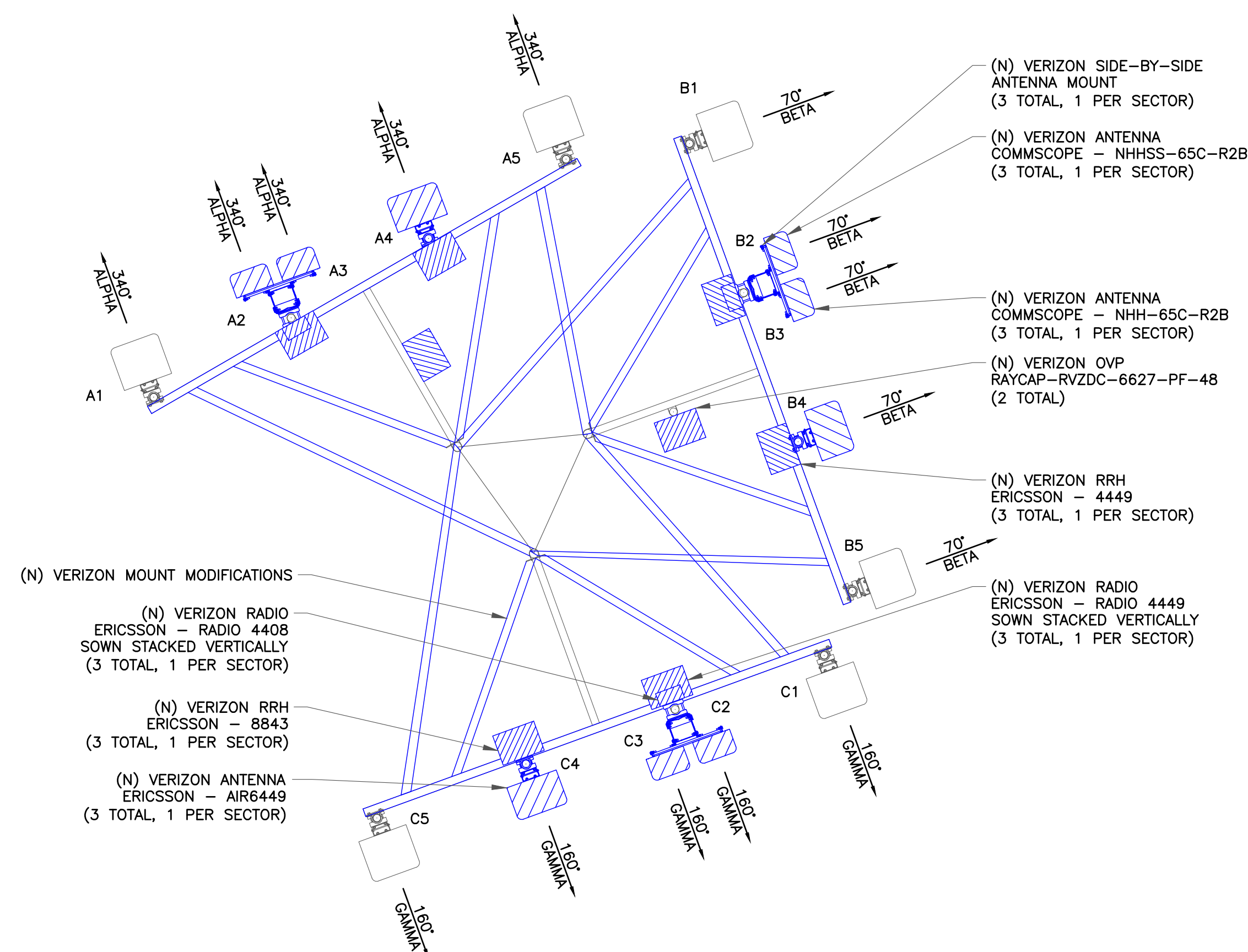


1 EXISTING ANTENNA PLAN

SCALE: 3/8"=1'-0" (FULL SIZE)
3/16"=1'-0" (11x17)

INSTALLER NOTE:

EXISTING AND PROPOSED ANTENNA/
EQUIPMENT POSITIONING SHOWN PER RFDS.
FIELD CONDITIONS MAY VARY.



2 NEW ANTENNA PLAN

SCALE: 3/8"=1'-0" (FULL SIZE)
3/16"=1'-0" (11x17)