

**Falcon DBPS
Developer Costs**

Drainage Fees			
Reach/Pond	Reach Length (ft)	Improvement	Cost
RWT354	16	Roadside Ditch	\$ 23,544
RMT106	226	Small Drop Structures w/Toe Protection	\$ 212,322
RMT114	1,667	Small Drop Structures w/Toe Protection	\$ 853,693
RWT150	3,741	Natural Channel Design	\$ 765,482
RWT210_upstream	2,132	Natural Channel Design	\$ 593,011
RWT124_upstream	1,246	Small Drop Structures w/Toe Protection	\$ 640,054
RWT174	1,871	Small Drop Structures w/Toe Protection	\$ 606,335
RWT234	2,129	Small Drop Structures w/Toe Protection	\$ 976,863
RET020	1,915	Small Drop Structures w/Toe Protection	\$ 1,169,444
RWT094	2,145	Natural Channel Design	\$ 246,213
RWT296	1,134	Small Drop Structures w/Toe Protection	\$ 223,458
RWT122	518	Natural Channel Design	\$ 71,367
Channel Subtotal			\$ 6,381,788
Engineering/Construction Admin (15%)			\$ 957,268
Contingency (20%)			\$ 1,276,358
Channel Total			\$ 8,615,414
WT 14	66	Crossing - Culvert	\$ 31,585
WT 13	53	Crossing - Culvert	\$ 28,525
MT 6-2	220	Crossing - Culvert	\$ 181,365
Culvert Subtotal			\$ 241,475
Engineering/Construction Admin (15%)			\$ 36,221
Contingency (20%)			\$ 48,295
Culvert Total			\$ 325,991
Paint Brush Hills Pond A		Detention Pond	\$ 20,000
Paint Brush Hills Pond C		Detention Pond	\$ 20,000
Regional Pond R1		Detention Pond	\$ 1,473,028
Regional Pond R2		Detention Pond	\$ 322,608
Sub Regional Pond SR2		Detention Pond	\$ 301,203
Sub Regional Pond SR3		Detention Pond	\$ 49,552
Sub Regional Pond SR4		Detention Pond	\$ 1,435,500
Sub Regional Pond SR6		Detention Pond	\$ 586,078
The Meadows Pond #1		Detention Pond	\$ 20,000
Woodmen Hills Pond H		Detention Pond	\$ -
Detention Subtotal			\$ 4,227,969
Engineering/Construction Admin (15%)			\$ 634,195
Contingency (20%)			\$ 845,594
Detention Total			\$ 5,707,758
Grand Total			\$ 14,649,163

Bridge Fees			
Reach/Pond	Reach Length (ft)	Improvement	Cost
WT 5-2	43	Crossing - Bridge	\$ 718,121
MT 7	58	Crossing - Bridge	\$ 207,465
MT 6	200	Crossing - Bridge	\$ 166,177
MT 1	45	Crossing - Bridge	\$ 433,032
Subtotal			\$ 1,524,796
Engineering/Construction Admin (15%)			\$ 228,719
Contingency (20%)			\$ 304,959
Total			\$ 2,058,474

unit cost = \$278.15 / LF
(These are 2013 dollars so
ultimate reimbursement can
be inflated from 2013 to
construction date.)

\$862,258 (2013) x 1.35 = \$1,164,048.33
 2014 => \$
 2015 => \$
 2016 => \$
 2017 => \$
 2018 => \$
 2019 => \$
 2020 => \$
 2020 => \$ 1,544,692.13 (1.327 x 2013)
 2021 => \$
 2022 => \$

**Falcon DBPS
Metro District Costs**

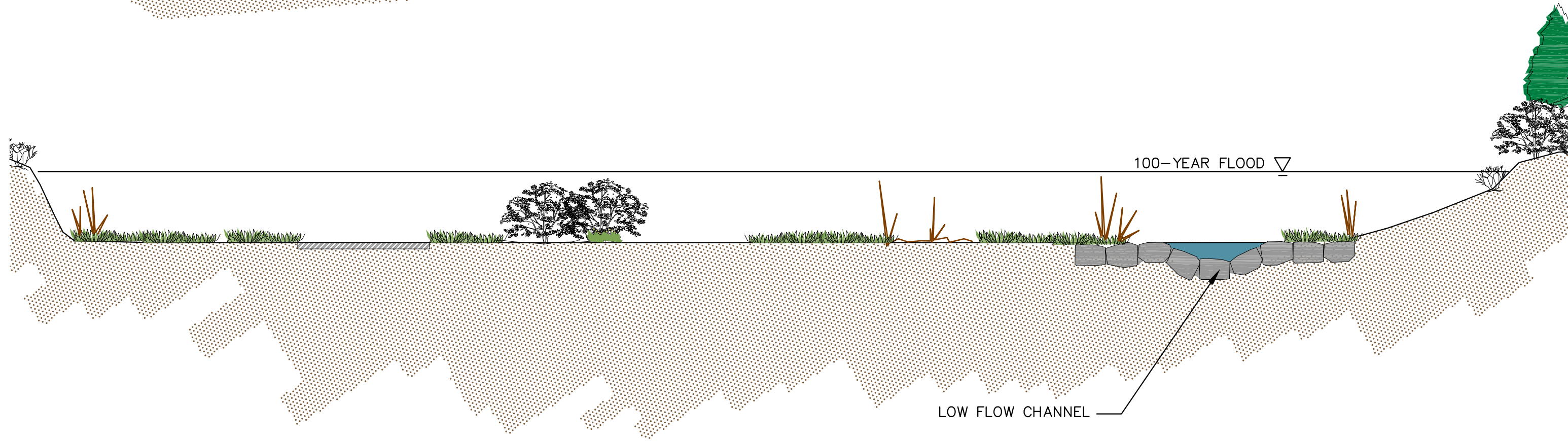
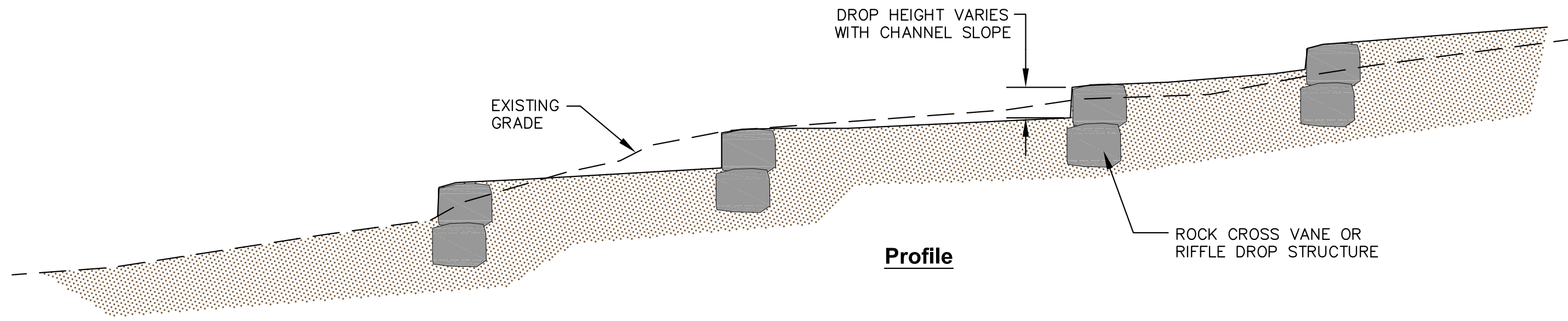
Drainage Fees			
Reach/Pond	Reach Length (ft)	Improvement	Cost
RET030	5,042	Small Drop Structures w/Toe Protection	\$ 1,405,908
RET040	1,820	Small Drop Structures w/Toe Protection	\$ 1,073,275
ET 19	39	Crossing - Culvert	\$ 63,340
Paint Brush Hills Pond #4		Detention Pond	\$ -
Paint Brush Hills Pond B1		Detention Pond	\$ -
Paint Brush Hills Pond B2		Detention Pond	\$ 20,000
Regional Pond MN		Detention Pond	\$ 20,000
Regional Pond WU South		Detention Pond	\$ 20,000
Woodmen Hills Pond #1 North		Detention Pond	\$ 20,000
Woodmen Hills Pond #1 South		Detention Pond	\$ 20,000
Woodmen Hills Pond #2		Detention Pond	\$ 20,000
Woodmen Hills Pond #3		Detention Pond	\$ 20,000
Woodmen Hills Pond #4		Detention Pond	\$ 240,000
Woodmen Hills Pond #5		Detention Pond	\$ 20,000
		Subtotal	\$ 2,942,524
		Engineering/Construction Admin (15%)	\$ 441,379
		Contingency (20%)	\$ 588,505
		Total	\$ 3,972,407

Bridge Fees			
Reach/Pond	Reach Length (ft)	Improvement	Cost
Pond WU Inlet Structure	74	Crossing - Bridge	\$ 658,410
MT 5-1	48	Crossing - Bridge	\$ 191,098
ET 31	302	Crossing - Bridge	\$ 525,026
		Subtotal	\$ 1,374,534
		Engineering/Construction Admin (15%)	\$ 206,180
		Contingency (20%)	\$ 274,907
		Total	\$ 1,855,620

Note for Pond WU reimbursement: those costs were on district sheet (outstanding obligations) so were not included in the fee calculation.

\$678,410 (2013) x 1.35 = \$915,853.50
 2014 => \$
 2015 => \$
 2016 => \$
 2017 => \$
 2018 => \$
 2019 => \$
 2020 => \$
 2020 => \$ 1,215,303.35 (1.327 x 2013)

(What date did pond repairs/construction start?)



NAME: S:\10.122.003 (Falcon DBPS)\DWG\Channel_sec-pro_exhibit.dwg
 POP: Matrix.ctb
 PLOT DATE: Wed Dec 21, 2011 3:03pm

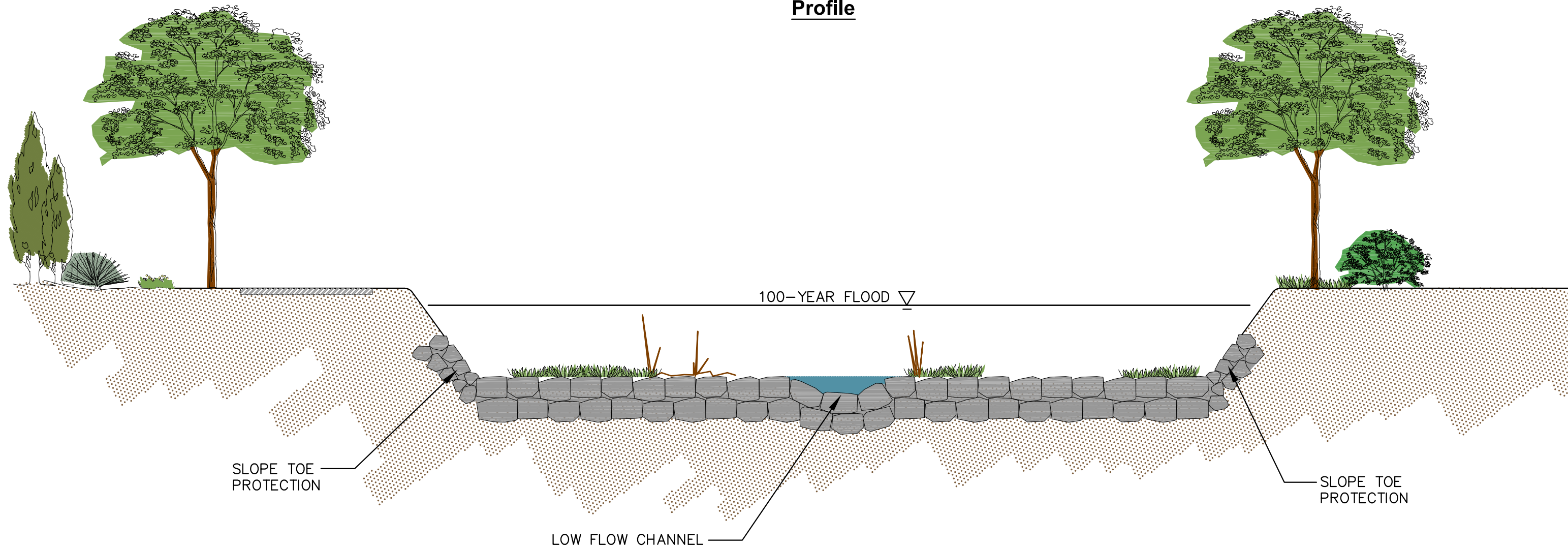
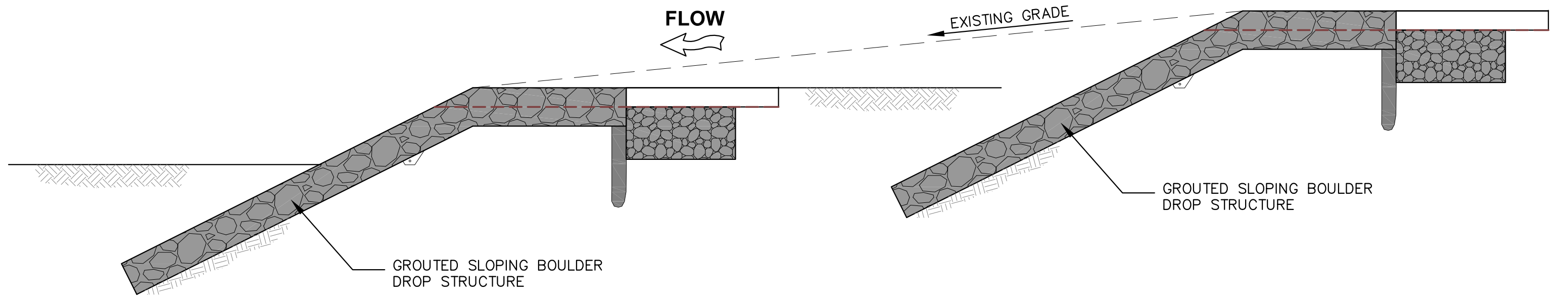


2435 Research Parkway, Suite 300
 Colorado Springs, CO 80920
 Phone 719-575-0100
 Fax 719-575-0208



**Natural Channel with
Grade Control Structures**

Figure 5-4



NAME: S:\10.122.003 (Falcon DBPS)\DWG\Channel_sec-pro_exhibit.dwg
 POP: Matrix.ctb
 PLOT DATE: Wed Dec 21, 2011 3:03pm

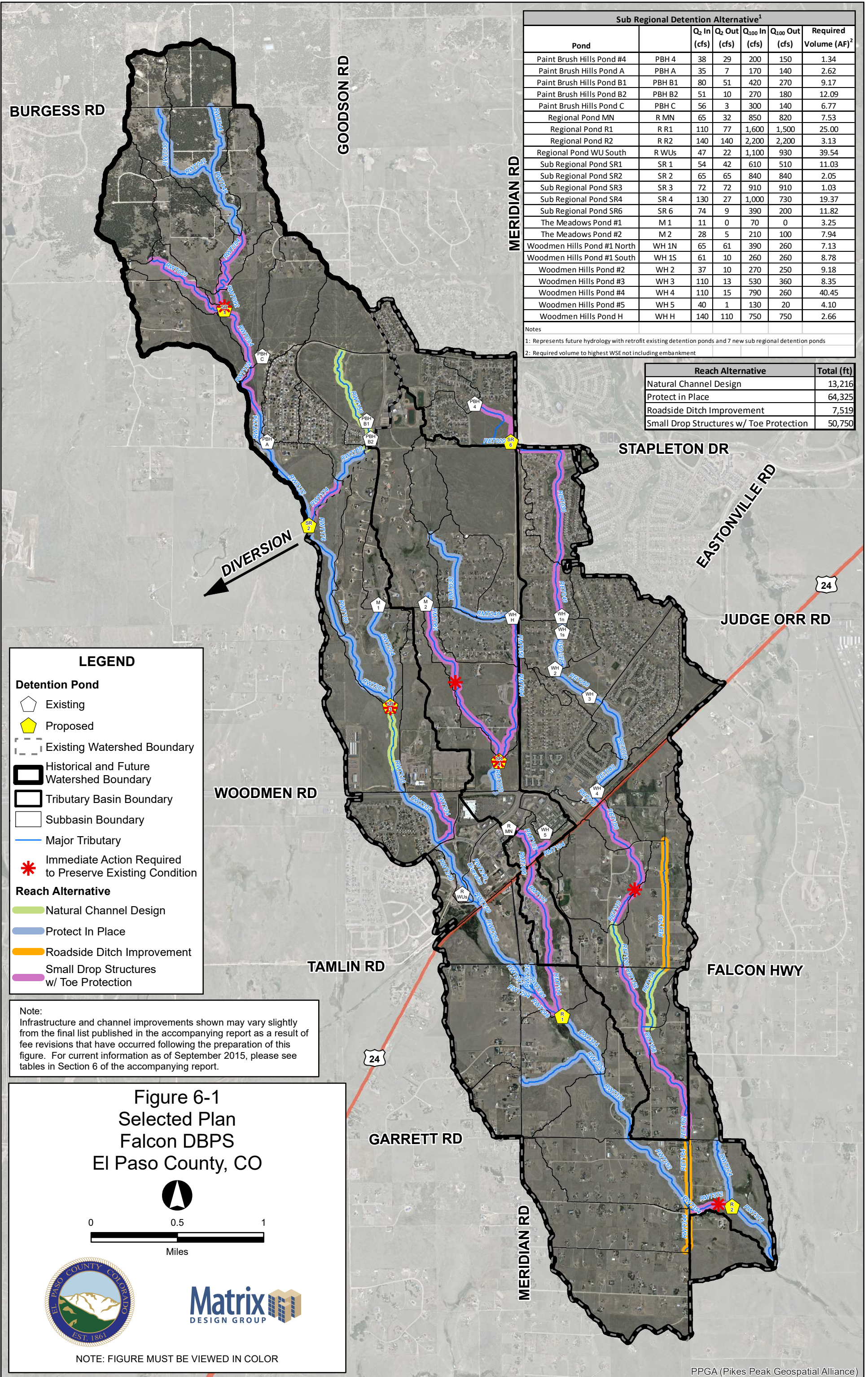


2435 Research Parkway, Suite 300
 Colorado Springs, CO 80920
 Phone 719-575-0100
 Fax 719-575-0208



**Small Drop Structures
with Toe Protection**

Figure 5-5



Sub Regional Detention Alternative ¹						
Pond		Q ₂ In (cfs)	Q ₂ Out (cfs)	Q ₁₀₀ In (cfs)	Q ₁₀₀ Out (cfs)	Required Volume (AF) ²
Paint Brush Hills Pond #4	PBH 4	38	29	200	150	1.34
Paint Brush Hills Pond A	PBH A	35	7	170	140	2.62
Paint Brush Hills Pond B1	PBH B1	80	51	420	270	9.17
Paint Brush Hills Pond B2	PBH B2	51	10	270	180	12.09
Paint Brush Hills Pond C	PBH C	56	3	300	140	6.77
Regional Pond MN	R MN	65	32	850	820	7.53
Regional Pond R1	R R1	110	77	1,600	1,500	25.00
Regional Pond R2	R R2	140	140	2,200	2,200	3.13
Regional Pond WU South	R WUs	47	22	1,100	930	39.54
Sub Regional Pond SR1	SR 1	54	42	610	510	11.03
Sub Regional Pond SR2	SR 2	65	65	840	840	2.05
Sub Regional Pond SR3	SR 3	72	72	910	910	1.03
Sub Regional Pond SR4	SR 4	130	27	1,000	730	19.37
Sub Regional Pond SR6	SR 6	74	9	390	200	11.82
The Meadows Pond #1	M 1	11	0	70	0	3.25
The Meadows Pond #2	M 2	28	5	210	100	7.94
Woodmen Hills Pond #1 North	WH 1N	65	61	390	260	7.13
Woodmen Hills Pond #1 South	WH 1S	61	10	260	260	8.78
Woodmen Hills Pond #2	WH 2	37	10	270	250	9.18
Woodmen Hills Pond #3	WH 3	110	13	530	360	8.35
Woodmen Hills Pond #4	WH 4	110	15	790	260	40.45
Woodmen Hills Pond #5	WH 5	40	1	130	20	4.10
Woodmen Hills Pond H	WH H	140	110	750	750	2.66

Notes:
 1: Represents future hydrology with retrofit existing detention ponds and 7 new sub regional detention ponds
 2: Required volume to highest WSE not including embankment

Reach Alternative	Total (ft)
Natural Channel Design	13,216
Protect in Place	64,325
Roadside Ditch Improvement	7,519
Small Drop Structures w/ Toe Protection	50,750

LEGEND

Detention Pond

- Existing (pentagon symbol)
- Proposed (yellow pentagon symbol)

Watershed Boundary

- Existing Watershed Boundary (dashed line)
- Historical and Future Watershed Boundary (thick black line)
- Tributary Basin Boundary (thin black line)
- Subbasin Boundary (thin grey line)

Major Tributary (blue line)

Reach Alternative

- Natural Channel Design (green line)
- Protect In Place (blue line)
- Roadside Ditch Improvement (orange line)
- Small Drop Structures w/ Toe Protection (purple line)

Immediate Action Required to Preserve Existing Condition (red asterisk symbol)

Note:
 Infrastructure and channel improvements shown may vary slightly from the final list published in the accompanying report as a result of fee revisions that have occurred following the preparation of this figure. For current information as of September 2015, please see tables in Section 6 of the accompanying report.

**Figure 6-1
 Selected Plan
 Falcon DBPS
 El Paso County, CO**

0 0.5 1
 Miles

NOTE: FIGURE MUST BE VIEWED IN COLOR