

EL PASO  COUNTY

PLANNING AND COMMUNITY DEVELOPMENT DEPARTMENT  
2880 INTERNATIONAL CIRCLE, SUITE 110  
COLORADO SPRINGS, CO 80910

FIRST-CLASS



02 7H  
0001332609 MAR 25 2021  
MAILED FROM ZIP CODE 80911  
**\$ 000.51<sup>0</sup>**

RECEIVED  
JUL 16 2021  
BY \_\_\_\_\_

5408008001  
CIRCLE K STORES INC  
1199 S BELTLINE RD STE 160  
COPPELL, TX 75019

NIXIE 775 DE 1 7206/03/21

RETURN TO SENDER  
UNDELIVERABLE AS ADDRESSED  
UNABLE TO FORWARD

BC: 80910314835 \*2810-00501-01-00

1:93310201620217 809103148 TW  
7501903148

## NOTICE OF PUBLIC HEARING(S)

This notice provides options to access to the Planning Commission and Board of County Commissioners' hearings on the following Quasi-Judicial land use matter. **The item is scheduled for the Thursday, April 15, 2021 Planning Commission beginning at 1:00 p.m. and the Tuesday, May 11, 2021 Board of County Commissioners' hearing beginning at 9:00 a.m. located in the Centennial Hall Hearing Room located at 200 S. Cascade Avenue, Colorado Springs.**

P-20-008

PARSONS

### MAP AMENDMENT (REZONE) CROSSROADS AT MEADOWBROOK APARTMENTS

A request by Colorado Springs Equities, LLC, for approval of a map amendment (rezoning) of 17.146 acres of a 29.04-acre tract from CR (Commercial Regional) to the RM-30 (Residential Multi-Dwelling). The parcel is located at the northwest corner of the Meadowbrook Parkway and Highway 24 intersection and is within Section 8, Township, 14 South, Range 65 West of the 6th P.M. (Parcel No. 54080-07-005) (Commissioner District No. 2)

Type of Hearing: Quasi-Judicial

Planner: Kari Parsons ([kariparsons@elpasoco.com](mailto:kariparsons@elpasoco.com))

El Paso County is committed to full access and transparency while the community works through the COVID-19 crisis. That also means balancing public safety and keeping essential parts of County government open for business. Here are the ways you can participate in quasi-judicial land-use items coming up before the Planning Commission and the Board of County Commissioners:

#### Watch the Live Hearings Remotely

If you are interested in watching the Planning Commission or Board of County Commissioners' hearing live, please go to <https://www.elpasoco.com/news-information-channel/> or visit El Paso County's Facebook page at <https://www.facebook.com/EIPasoCountyCO/> at the scheduled time of the hearing. Staff will be monitoring the County's Facebook Live feed, so please feel free to ask questions or provide any comments you might have; however, any testimony you wish to provide must be done by following the "Participate Remotely" procedures listed below.

#### Participate Remotely

Due to COVID-19, we are recommending that you participate in the hearing remotely. If you would like to provide testimony on an item being heard by the Planning Commission or the Board of County Commissioners, please email Tracey Garcia at [TraceyGarcia@elpasoco.com](mailto:TraceyGarcia@elpasoco.com) with your name and the best phone number to be reached at and include any documents you would like provided to the hearing body as part of the official record. **NOTE: New exhibits are not permitted via email the day of hearing. All exhibits must be emailed to Ms. Garcia no later than one day prior to each of the above listed hearings.**

A list of individuals wishing to testify will be provided to the Chair in advance of the meeting. When it's time for public testimony on the item you'd like to testify on will receive a phone call at the number you provided and will be brought into the meeting remotely so you can address the hearing body.

#### Arrive in person (the address is 200 S. Cascade Ave, Colorado Springs, CO 80903)

- In-person attendance at Planning Commission and Board of County Commissioner hearings is permitted, but it is highly discouraged.
- Strict social/physical-distancing must be maintained if you arrive to present or testify in person.
- You must be separated by at least two chairs and one row of seating in the auditorium.
- Please pay special attention to any communication you receive regarding the time your item will be heard.

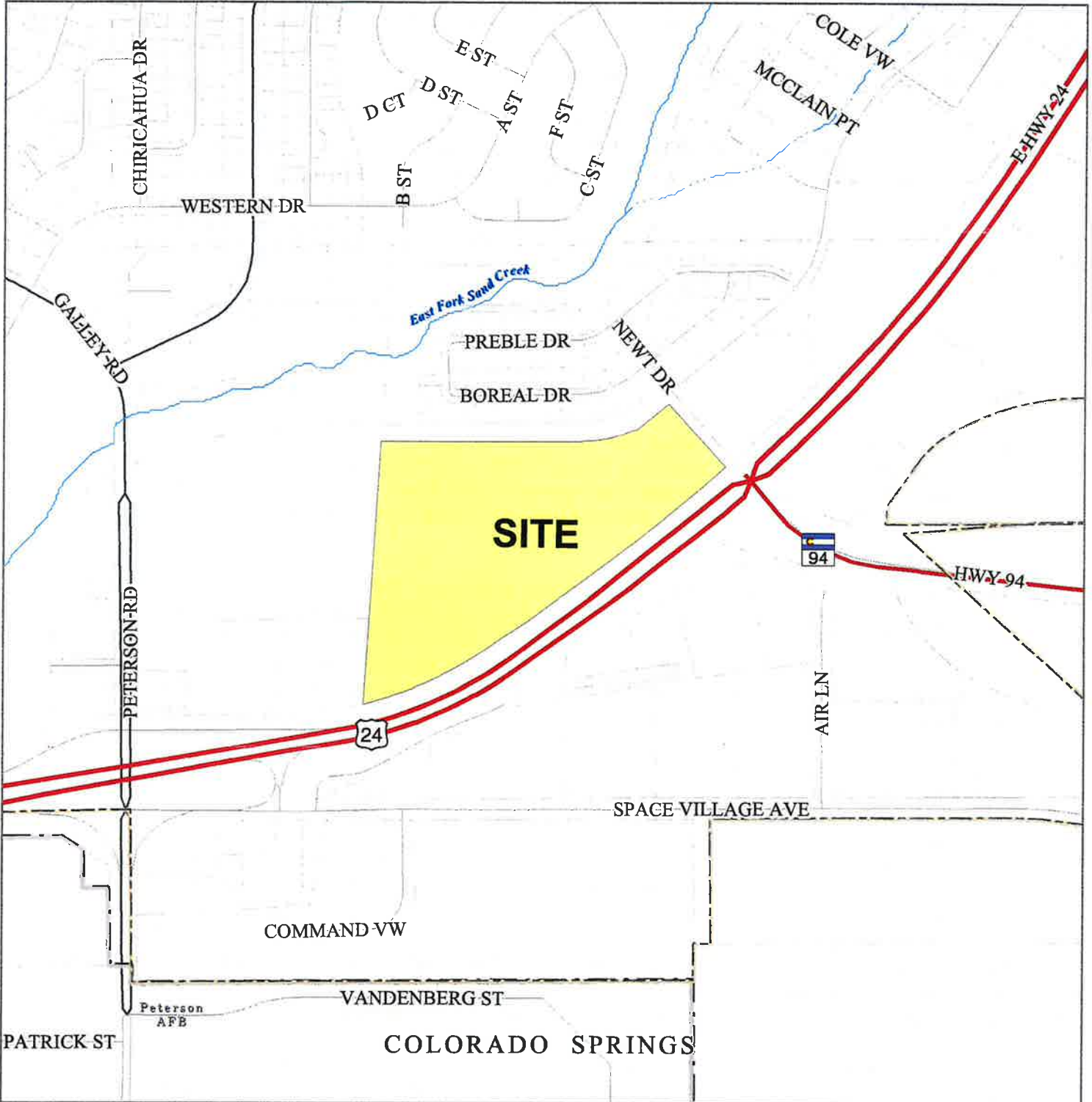
# El Paso County Parcel Information

File Name: P-20-008

PARCE	NAME
5408007	COLORADO SPRINGS EQUIT

Zone Map No. --

Date: March 24, 2021



Please report any parcel discrepancies to:  
 El Paso County Assessor  
 1675 W. Garden of the Gods Rd.  
 Colorado Springs, CO 80907  
 (719) 520-6600



COPYRIGHT 2018 by the Board of County Commissioners, El Paso County, Colorado. All rights reserved. No part of this document or data contained hereon may be reproduced; used to prepare derivative products; or distributed without the specific written approval of the Board of County Commissioners, El Paso County, Colorado. This document was prepared from the best data available at the time of printing. El Paso County, Colorado, makes no claim as to the completeness or accuracy of the data contained hereon.