

LANDSCAPE NOTES

- SOIL AMENDMENT - INCORPORATE 3 CUBIC YARDS/1000 SF AREA OF PREMIUM ORGANIC COMPOST (TYPE 1) ON BLUEGRASS TURF AREAS. INCORPORATE 2 CUBIC YARDS/1000 SF AREA OF ORGANIC COMPOST (DECOMPOSED MANURE) TO ALL NATIVE SEED AREAS. TILL INTO TOP 6" OF SOIL. AMENDMENTS ARE BASED ON SOIL ANALYSIS. THE BELOW LEVELS ARE REQUIRED FOR ANY ORGANIC MATTER USE. AMEND SOIL PER THE GUIDELINES LISTED BELOW TO ADDRESS DEFICIENCIES NOTED IN THE SOIL ANALYSIS.
 - SALT LEVEL EQUAL TO OR LESS THAN AMMONIUM
 - PH LEVEL EQUAL TO OR LESS THAN 7
 - ORGANIC MATTER CONTENT EQUAL TO OR GREATER THAN 85%
 - NITROGEN: CARBON: BETWEEN 20:1 AND 30:1
 - PARTICLE SIZE: THE COARSER THE BETTER, NO SILT OR CLAY SIZED PARTICLES
 - SUBMIT FERTILIZER PRODUCT SHEET TO OWNER'S REPRESENTATIVE FOR APPROVAL PRIOR TO INSTALLATION. EXAMPLES FOR SUBMITTALS INCLUDE: TALL NATIVE SEED MIX FERTILIZER, ETC.
- CONTRACTOR TO UTILIZE SPRINKLER TOPSOIL FROM GRADING OPERATION AS AVAILABLE. TILL INTO TOP 6" OF SOIL.
- A FULLY AUTOMATED SPRINKLER IRRIGATION SYSTEM WILL DRIP IRRIGATE ALL TREE, SHRUB, AND GROUND COVER PLANTING AREAS AND SPRAY ANY TURF. IRRIGATION PLAN WILL INCLUDE AN IRRIGATION SCHEDULE THAT NOTES APPLICATION RATES BASED ON TURF TYPE, AND NOTES RATES FOR NEWLY PLANTED PLANTS VS. ESTABLISHED PLANTS AND GENERAL RECOMMENDATIONS REGARDING SEASONAL ADJUSTMENTS (SPRING AND FALL).
- ALL TREES AND SHRUBS TO RECEIVE A BACK FILL MIXTURE OF 50% IMPORTED LEADY TOPSOIL, 25% PEAT MOSS, AND 25% EXISTING SOIL.
- ALL TREES TO BE STAKED WITH WOOD STAKES, FOR 3" CAL. DECIDUOUS TREES AND EVERGREEN TREES OVER 8" USE 3" WOOD STAKES (STAKE TO GROUND LEVEL). SUBMIT STAKING MATERIALS PRODUCT INFO TO LA. FOR APPROVAL PRIOR TO INSTALLATION.
- CONTRACTOR TO APPLY PRE-EMERGENT HERBICIDE TO SHRUB BEDS PER MANUFACTURER'S SPECIFICATIONS. SUBMIT MANUFACTURER'S SPEC. SHEET TO OWNER'S REPRESENTATIVE FOR APPROVAL PRIOR TO APPLICATION OF HERBICIDE.
- ALL PLANTS TO RECEIVE 3" DEPTH OF SHREDDED CEDAR WOOD MULCH UNLESS ROCK MULCH IS PRESENT. MULCH RINGS TO BE SIZED PER PLANTING DETAILS. WOOD MULCH TO BE "HOPKINS HARK CEDAR MULCH." SUBMIT PRODUCT INFORMATION TO OWNER'S REPRESENTATIVE FOR APPROVAL PRIOR TO INSTALLATION.
- CONTRACTOR IS RESPONSIBLE FOR INSTALLING ALL PLANT MATERIAL SHOWN ON THIS PLAN. IF ANY DISCREPANCIES ARE FOUND BETWEEN THE LANDSCAPE PLAN AND THE PLANT SCHEDULE, THE QUANTITIES SHOWN ON THE PLANT SCHEDULE.
- PLANTS SHALL BE WARRANTED FOR THE DURATION OF ONE FULL YEAR AFTER THE INSTALLATION (WARRANTY SHALL COVER 100% OF THE REPLACEMENT COST).
- ALL SEED, ROCK, & SHRUB BEDS TO BE SEPARATED BY SOLID STEEL EDGING. ALL SHRUB BEDS TO BE ENCLOSED BY STEEL EDGING. BETWEEN ALTERNATIVE TURF AND NATIVE SEED SHALL BE A MOWED STRIP, WITHOUT STEEL EDGING.
- SE: SOLID STEEL EDGING TO BE "DURAREDGE" (1/2" THICK x 4" WIDE) STEEL LANDSCAPE EDGING, GREEN COLOR, WITH ROLLED EDGE AND STEEL STAKES. USE SOLID STEEL EDGING EXCEPT WHERE NOTED ON THE PLANS. SUBMIT PRODUCT INFORMATION TO OWNER'S REPRESENTATIVE FOR APPROVAL PRIOR TO INSTALLATION.
- COBBLE: 2" - 4" CRIPPLE CREEK GOLD ORE FROM C&S SAND AND STONE, CO. (719.577.9900), OR APPROVED EQUAL. SUBMIT SAMPLE TO OWNER'S REPRESENTATIVE FOR APPROVAL PRIOR TO ORDERING OR INSTALLATION.
- ROCK MULCH: 3/4" CHAMFER GRANITE FROM C&S SAND AND STONE, CO. (719.577.9900), OR APPROVED EQUAL. SUBMIT SAMPLE TO OWNER'S REPRESENTATIVE FOR APPROVAL PRIOR TO ORDERING OR INSTALLATION.

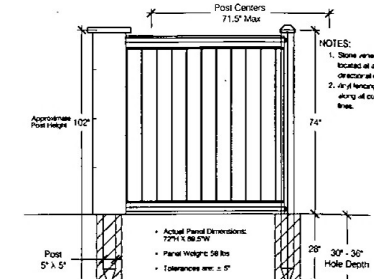
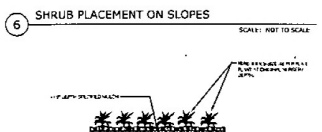
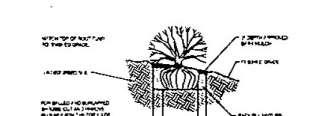
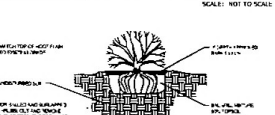
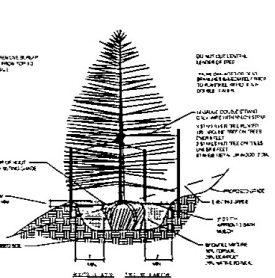
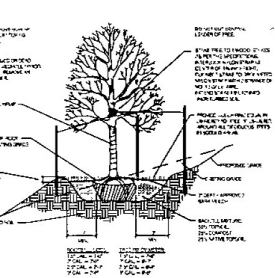
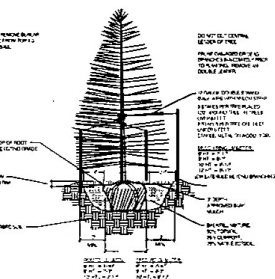
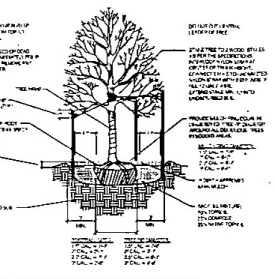
PLANT SCHEDULE FILING 1

TREES	CODE	BOTANICAL NAME / COMMON NAME	HEIGHT	WIDTH	SIZE	COND	QTY
	Agr	Acer grandidentatum / Bigtooth Maple	30'	30'	3" Cal.	B&B	51
	Coc	Celtis occidentalis / Common Hackberry	60'	50'	3" Cal.	B&B	23
	Cco	Corylus colurna / Turkish Filbert	45'	30'	3" Cal.	B&B	36
	Ccr	Crataegus crus-galli / Gockspur Hawthorn	30'	30'	2" Cal.	B&B	10
	Gdl	Gymnocladus dioica / Kentucky Coffee Tree	60'	50'	3" Cal.	B&B	12
	Mhx	Malus x 'Hopa' / Hopa Crab Apple	25'	25'	2" Cal.	B&B	22
	Pcl	Pinus contorta latifolia / Lodgepole Pine	70'	15'	8" HT	B&B	25
	Ped	Pinus edulis / Pinon Pine	30'	20'	6" HT	B&B	46
	Pfl	Pinus flexilis / Limber Pine	50'	30'	6" HT	B&B	29
	Ppo	Pinus ponderosa / Ponderosa Pine	80'	40'	8" HT	B&B	26
	Pde	Populus deltoides / Eastern Cottonwood	80'	60'	3" Cal.	B&B	7
	Pam	Prunus americana / American Plum	20'	10'	2" Cal.	B&B	25

SHRUBS	CODE	BOTANICAL NAME / COMMON NAME	HEIGHT	WIDTH	SIZE	COND	QTY
	Cse	Cornus sericea / Redosier Dogwood	8'	8'	5 GAL	CONT	41
	CC	Cotoneaster apiculatus / Coral Beauty Cotoneaster	1.5'	5"	1"	CONT	26
	Jbu	Juniperus sabina 'Buffalo' / Buffalo Savin Juniper	1'	8"	5 GAL	CONT	70
	Jta	Juniperus sabina 'Tamariscifolia' / Tamarisk Savin Juniper	6'	8"	5 GAL	CONT	6
	Pod	Physocarpus opulifolius 'Diablo' / Diablo Ninebark	8'	8"	5 GAL	CONT	13
	PM	Pinus mugo 'Mops' / Mugo Pine	4'	4"	5 GAL	CONT	14
	Ral	Ribes alpinum / Alpine Currant	6'	6"	5 GAL	CONT	42
	Srf	Solidago rugosa 'Fireworks' / Wrinkleleaf Goldenrod	3'	2"	1 GAL	CONT	91
	Vle	Viburnum lentago / Nannyberry Viburnum	15'	8"	5 GAL	CONT	6

PERENNIALS	CODE	BOTANICAL NAME / COMMON NAME	HEIGHT	WIDTH	SIZE	COND	QTY
	Cto	Cerastium tomentosum / Snow In Summer	1'	1.5"	1 GAL	CONT	138
	Paf	Persicaria affinis / Knotweed	0.5'	1.5"	1 GAL	CONT	138

GRASSES	CODE	BOTANICAL NAME / COMMON NAME	HEIGHT	WIDTH	SIZE	COND	QTY
	Cxa	Calamagrostis x acutiflora 'Karl Foerster' / Feather Reed Grass	5'	2"	1 GAL	CONT	165
	Hsc	Helictotrichon sempervirens / Blue Dactyl/Blue Avena	3'	2"	1 GAL	CONT	258
	Pvm	Panicum virgatum / Switch Grass	4'	1.5"	1 GAL	CONT	153



NATIVE GRASS MIX

EROSION PROTECTION REVEGETATION REQUIREMENTS
Per U.S.A. Soil Conservation Service Guidelines

Project No. 10-10-2010-001
Range Site 10-10-2010-001

Species: Bluegrass, Fescue, Ryegrass, Sorghum, Millet, Amaranth, Sunflower, Buckwheat, Sorghum, Millet, Amaranth, Sunflower, Buckwheat

Planting Date: 10/10/2010

Planting Area: 1000 sq ft

Planting Method: 1. Hand, 2. Machine

Planting Rate: 100 plants/sq ft

Planting Cost: \$1000

ALTERNATIVE TURF NATIVE SEED MIX

EROSION PROTECTION REVEGETATION REQUIREMENTS
Per U.S.A. Soil Conservation Service Guidelines

Project No. 10-10-2010-001
Range Site 10-10-2010-001

Species: Bluegrass, Fescue, Ryegrass, Sorghum, Millet, Amaranth, Sunflower, Buckwheat, Sorghum, Millet, Amaranth, Sunflower, Buckwheat

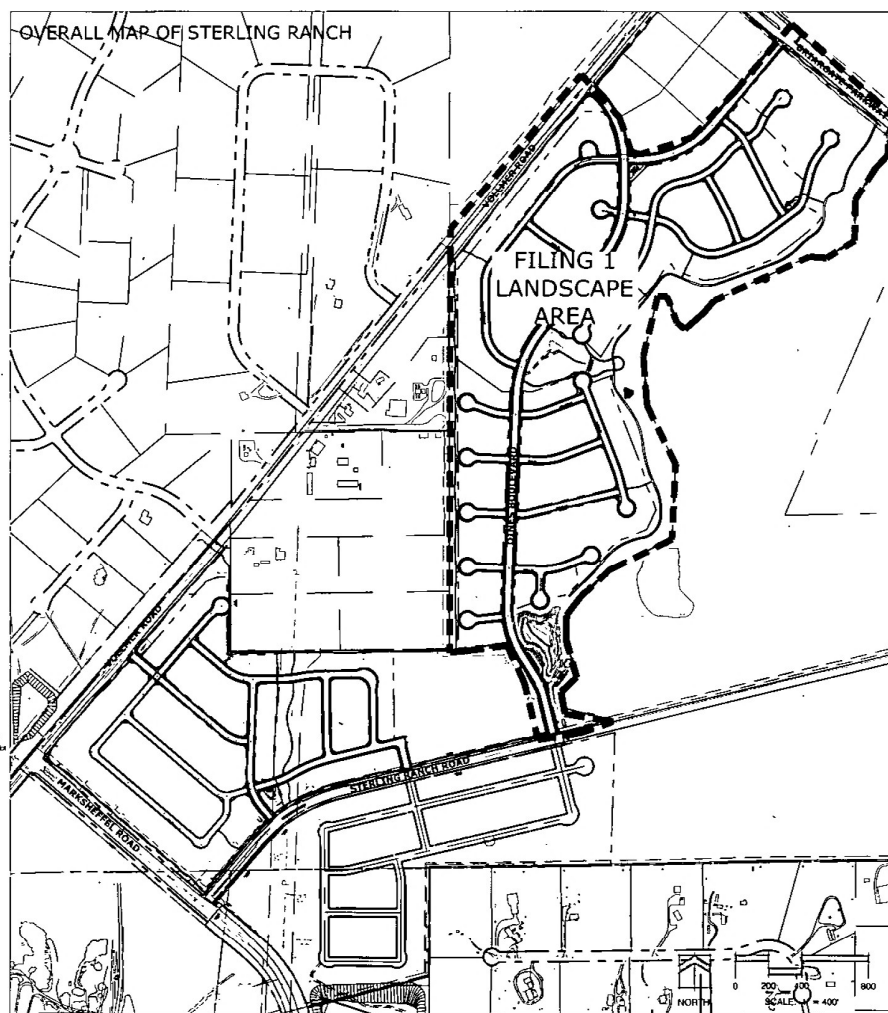
Planting Date: 10/10/2010

Planting Area: 1000 sq ft

Planting Method: 1. Hand, 2. Machine

Planting Rate: 100 plants/sq ft

Planting Cost: \$1000



619 N. Cass
Colorado 5
Tel. 7
Fax 7
www.ne

RECEIVED
MAY 0 1 2

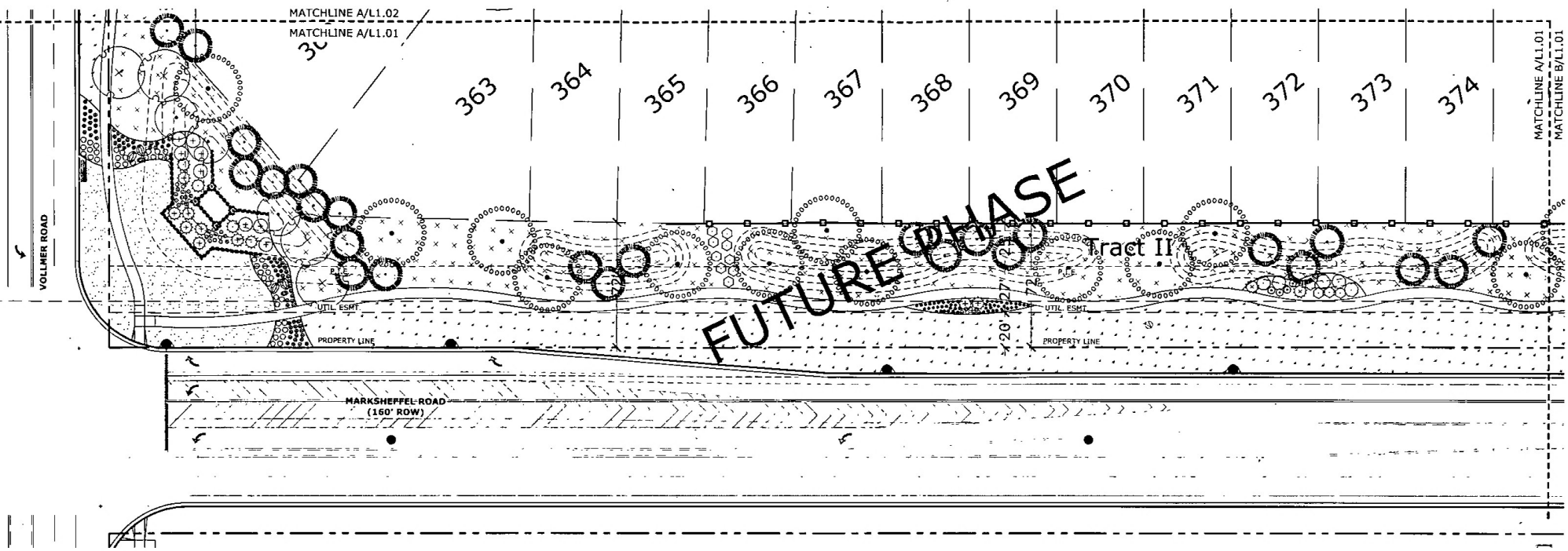
STE
RA
STRE
LAND

DATE: BY
PROJECT NO: 21410
PREPARED BY:

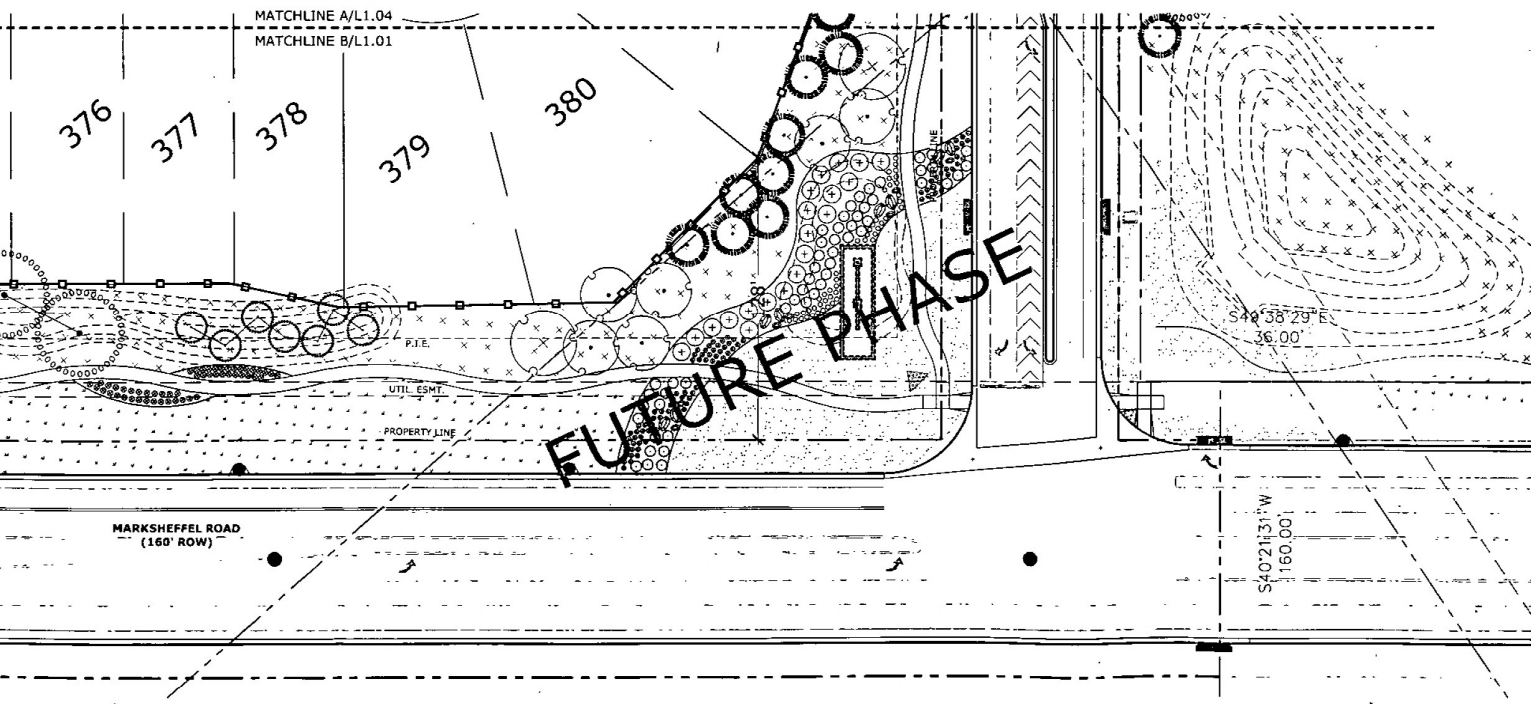
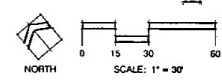
CONS
DOC

LANDS
AN

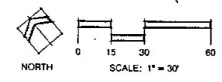
L1
#



VOLLMER AND MARKSHEFFEL ROAD
PLAN

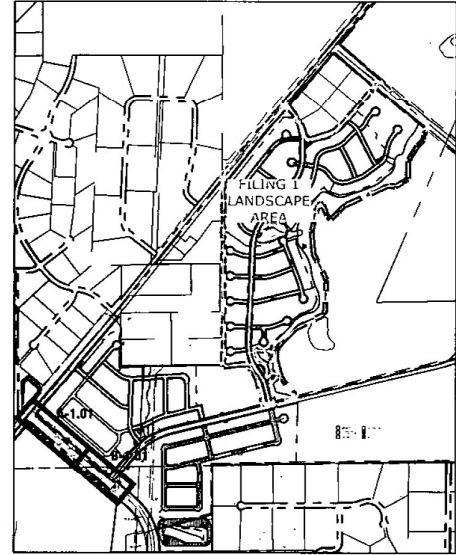


MARKSHEFFEL AND STERLING RANCH ROAD
PLAN



LANDSCAPE LEGEND

SHEET KEY



Land
Landscape
Architecture
Urban
Planning

619 N. Cass
Colorado 80501
Tel. 719.575.1111
Fax 719.575.1112
www.nlsa.com

STE
RA

STRE
LAND

DATE:
PROJECT MGR:
PREPARED BY:

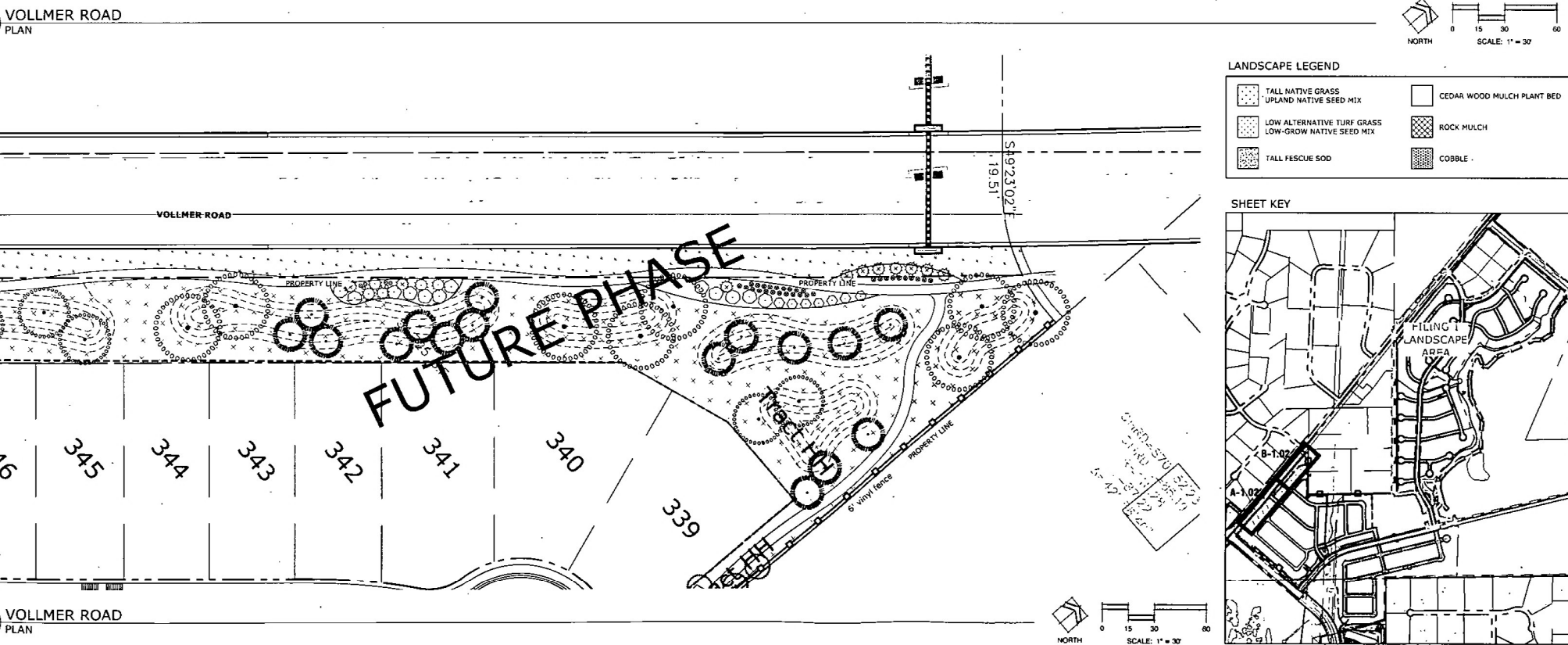
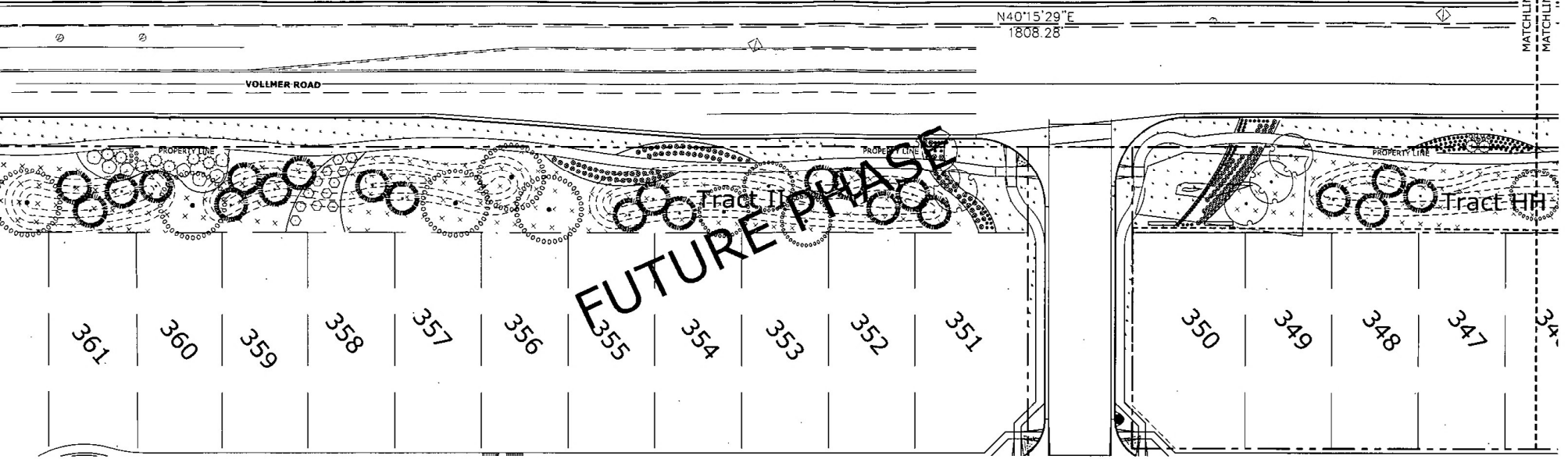
CONSTR
DOC

DATE: 02/18/18
BY: JAR
DATE: 02/14/18
BY: JAR

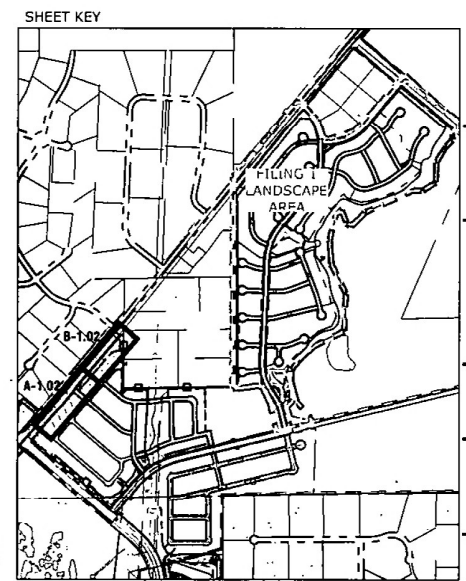
LANDSC

L1

#



LANDSCAPE LEGEND



619 N. Cass
Colorado
Tel.
Fax
www.n...

STE
RA

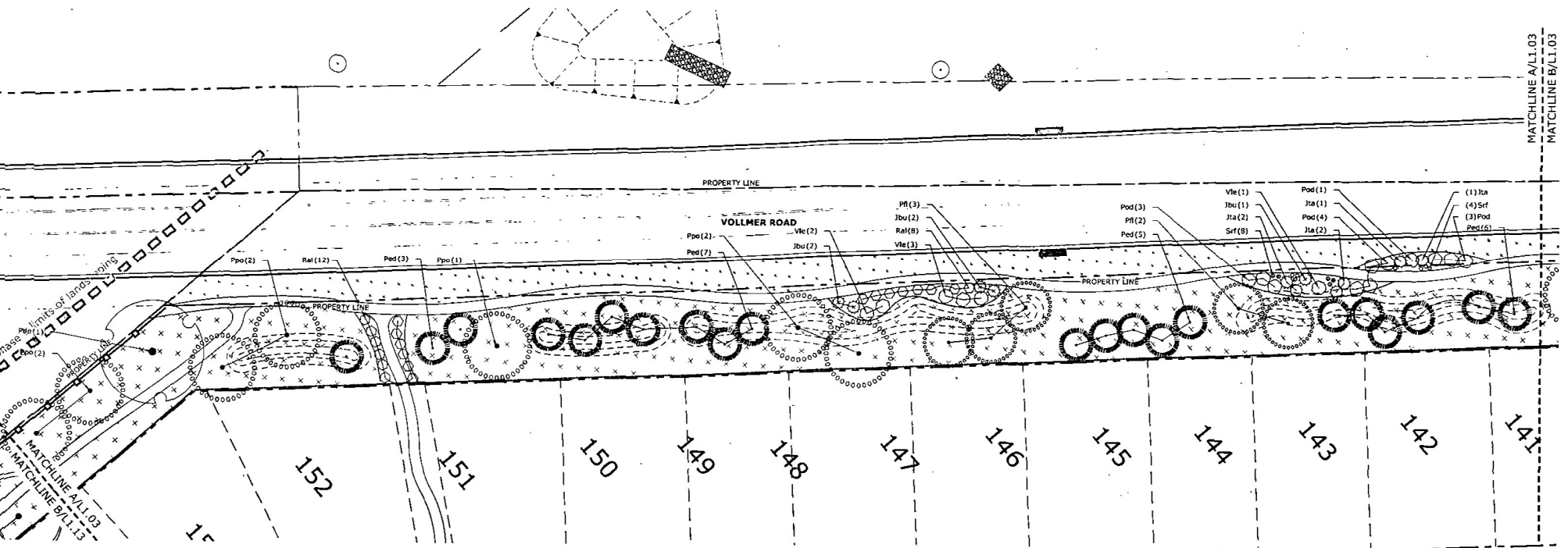
STRE
LAND

DATE:
PROJECT MGR:
PREPARED BY:

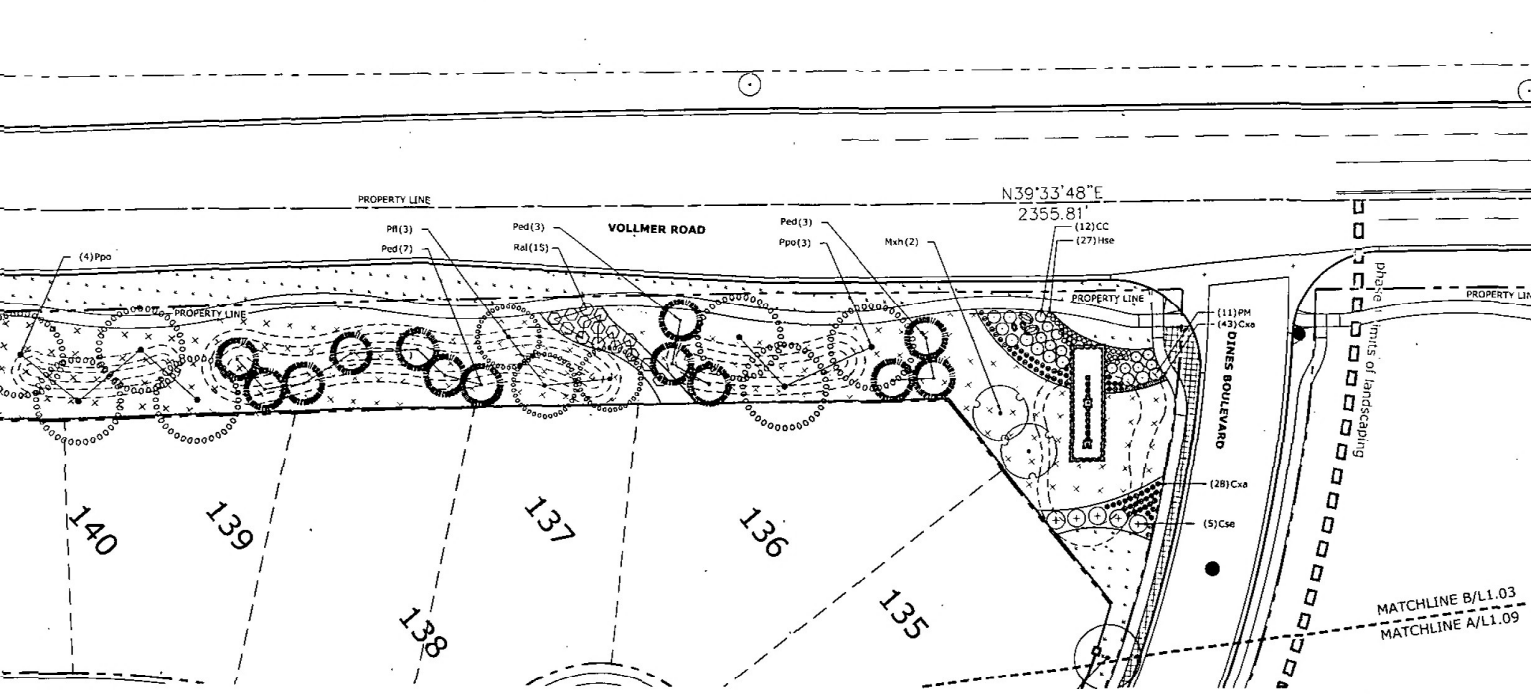
CONS
DOC

LANDSC

L 1
#



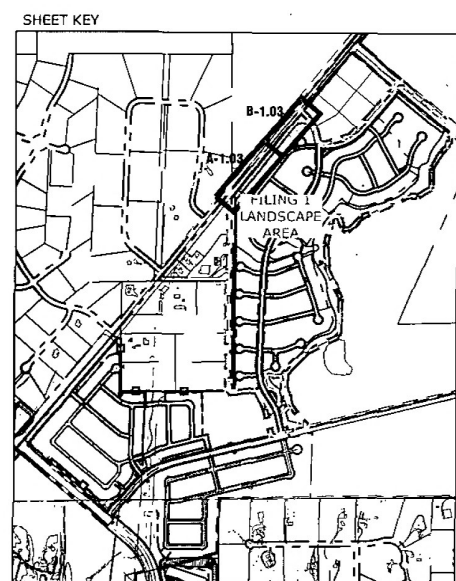
VOLLMER ROAD PLAN



VOLLMER ROAD AND DINES BOULEVARD PLAN

LANDSCAPE LEGEND

	TALL NATIVE GRASS		CEDAR WOOD MULCH PLANT BED
	UPLAND NATIVE SEED MIX		ROCK MULCH
	LOW ALTERNATIVE TURF GRASS		COBBLE
	LOW-GROW NATIVE SEED MIX		
	TALL FESCUE SOD		



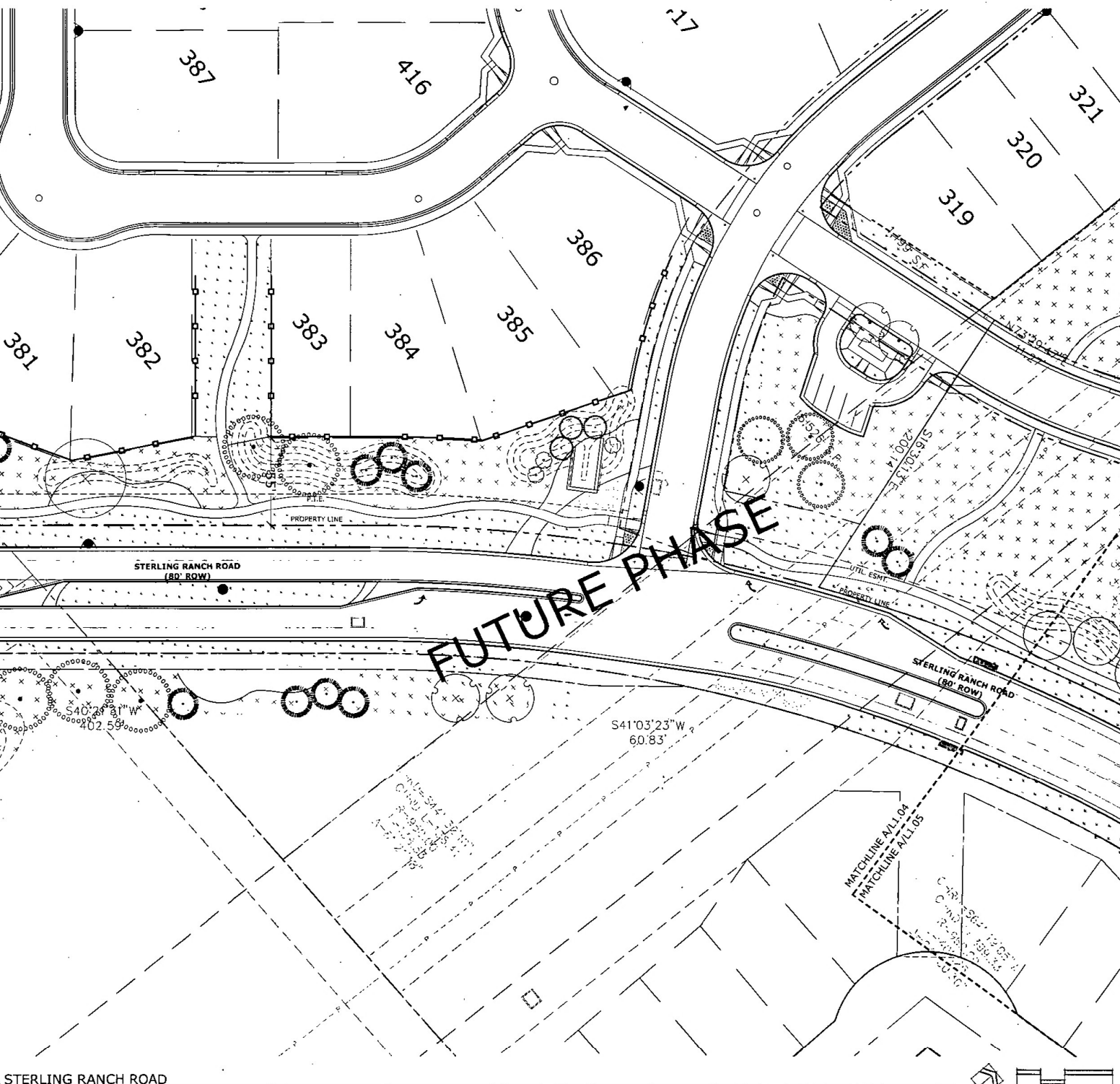
MATCHLINE A/L1.03
MATCHLINE B/L1.03

619 N. Cas
Colorado
Tel.
Fax
www.n
DATE:
PROJECT MGR:
PREPARED BY:

CONS
DOC

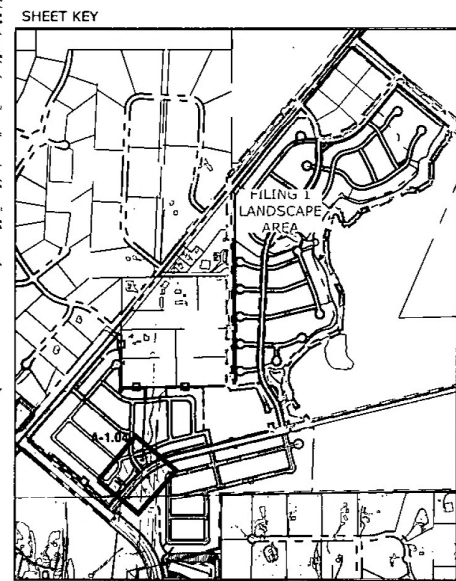
LANDSC

L 1
#



STERLING RANCH ROAD
PLAN

LANDSCAPE LEGEND



619 N. Cascade

 Colorado Springs, CO 80905

 Tel: 719.575.1111

 Fax: 719.575.1112

 www.landscape-architecture.com

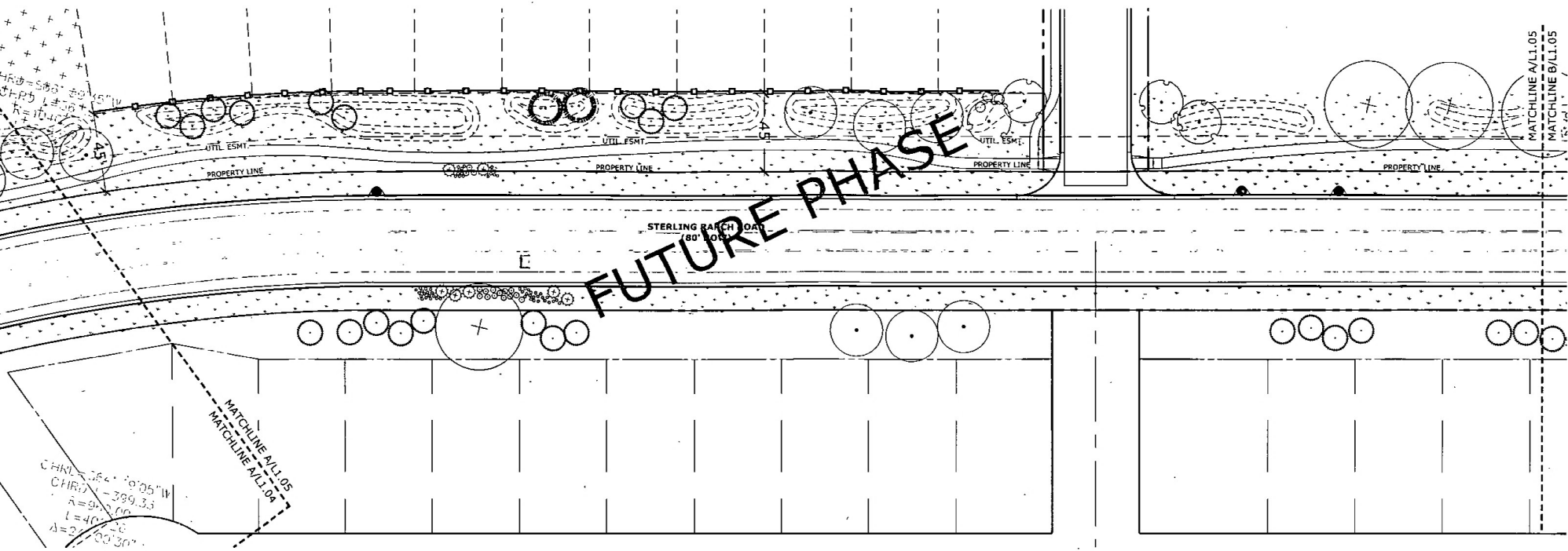
DATE: 8/21/16

 PROJECT MGR: JAR

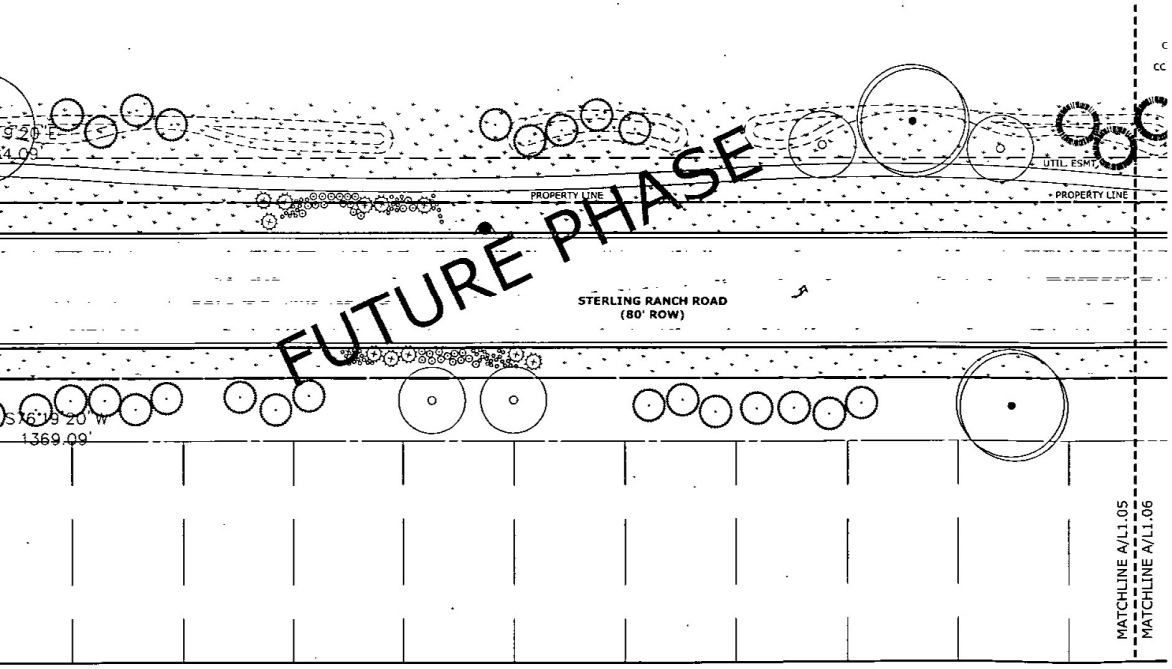
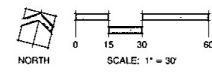
 PREPARED BY: JAR

L1

 #



STERLING RANCH ROAD
PLAN



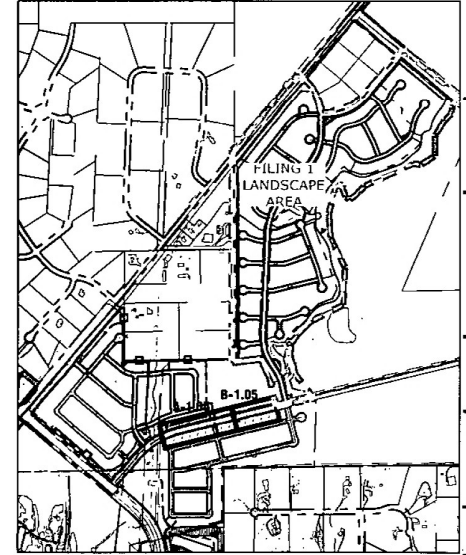
STERLING RANCH ROAD
PLAN



LANDSCAPE LEGEND

	TALL NATIVE GRASS UPLAND NATIVE SEED MIX		CEDAR WOOD MULCH PLANT BED
	LOW ALTERNATIVE TURF GRASS LOW-GROW NATIVE SEED MIX		ROCK MULCH
	TALL FESCUE SOD		COBBLE

SHEET KEY



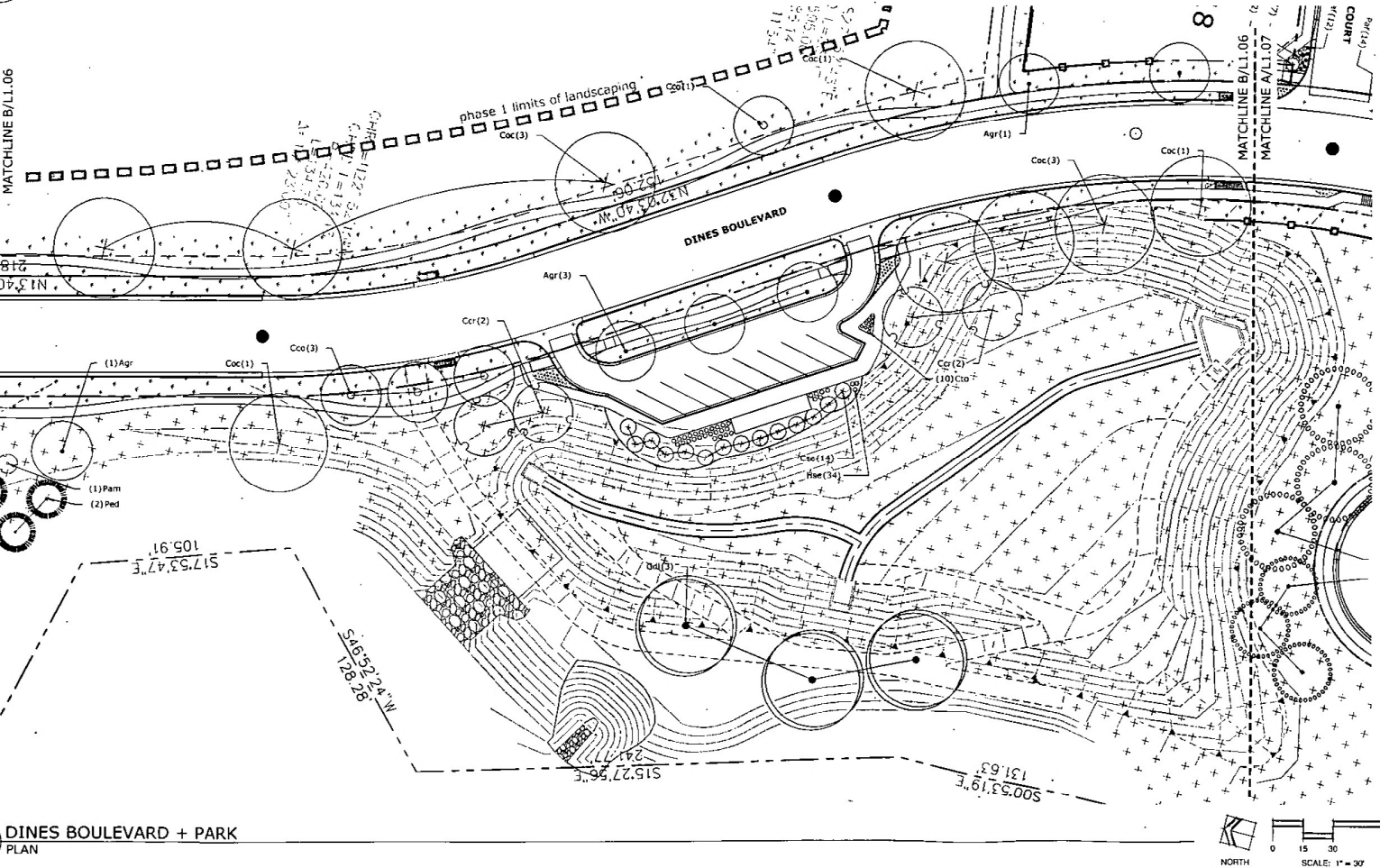
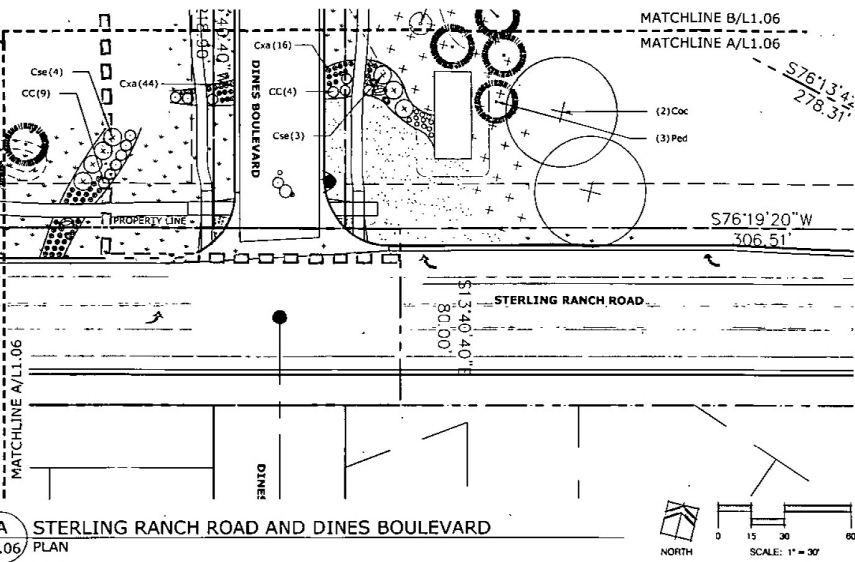
619 N. Cas
 Colorado
 Tel.
 Fax
 www.n

DATE:
 PROJECT MGR:
 PREPARED BY:

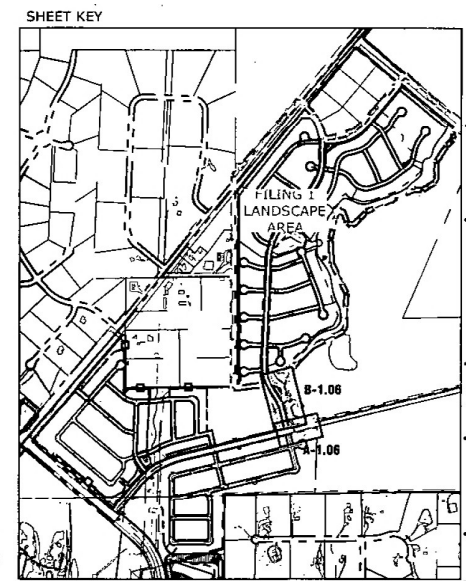
CONS
 DOC

LANDSC

L 1
 #



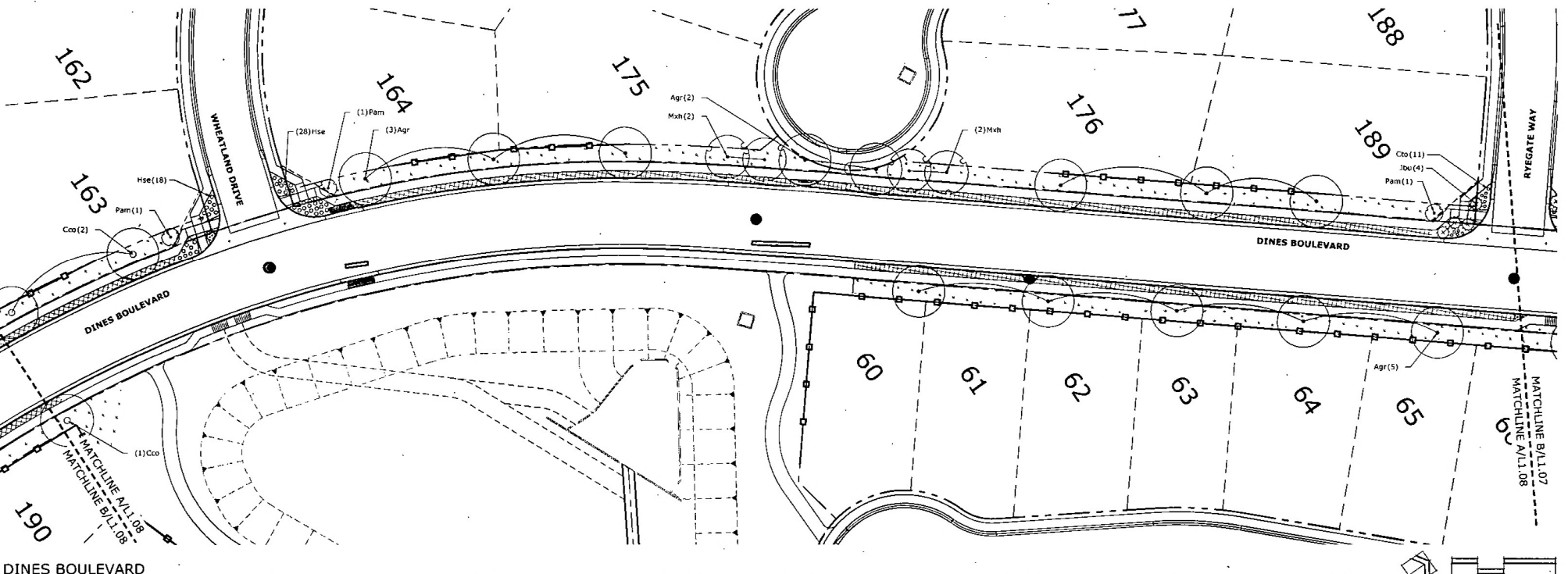
LANDSCAPE LEGEND



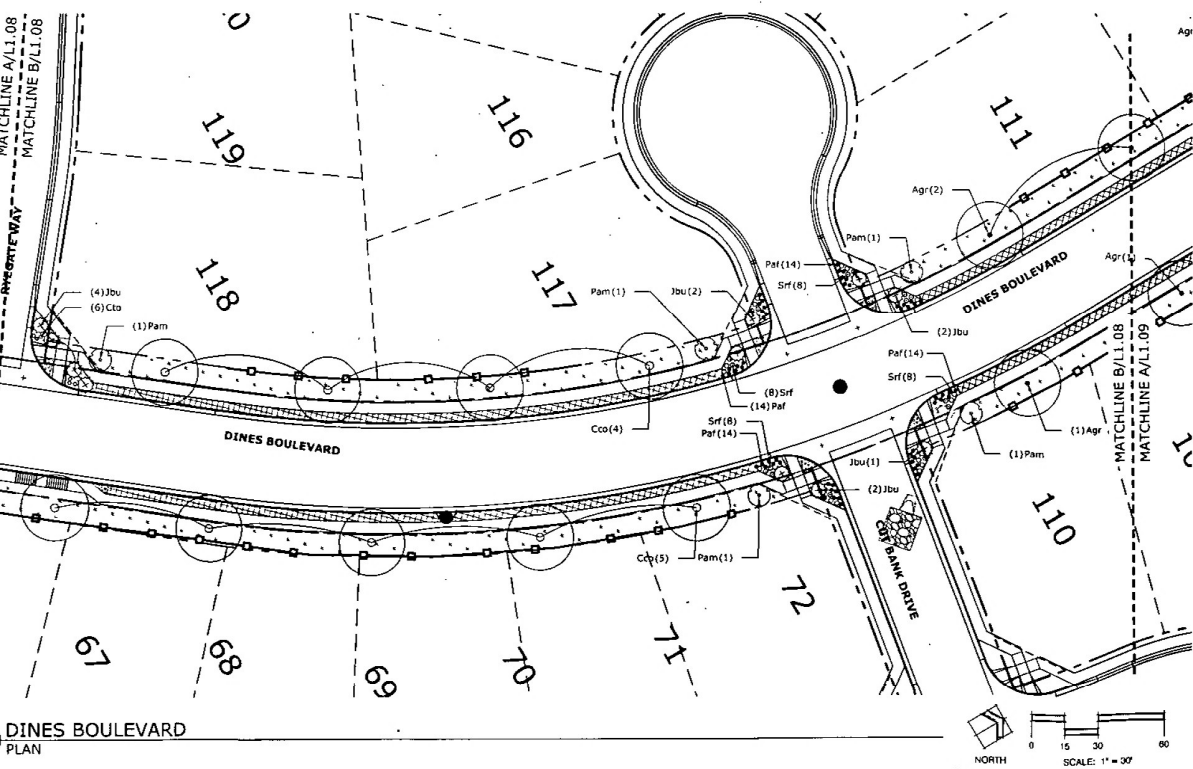
619 N. Cascade
 Colorado
 Tel. 303.440.1111
 Fax 303.440.1112
 www.landmarkarch.com

DATE: 8/21/16
 PROJECT: GRI
 PREPARED BY: JAC

FILING 1 LANDSCAPE AREA
 8-1.06
 A-1.06



DINES BOULEVARD
PLAN



DINES BOULEVARD
PLAN

LANDSCAPE LEGEND

	TALL NATIVE GRASS UPLAND NATIVE SEED MIX		CEDAR WOOD MULCH PLANT BED
	LOW ALTERNATIVE TURF GRASS LOW-GROW NATIVE SEED MIX		ROCK MULCH
	TALL FESCUE SOD		COBBLE



Land
La
Ar
Ur
N
619 N. Cas
Colorado S
Tel. 7
Fax 7
www.re

STE
RA
STRE
LAND

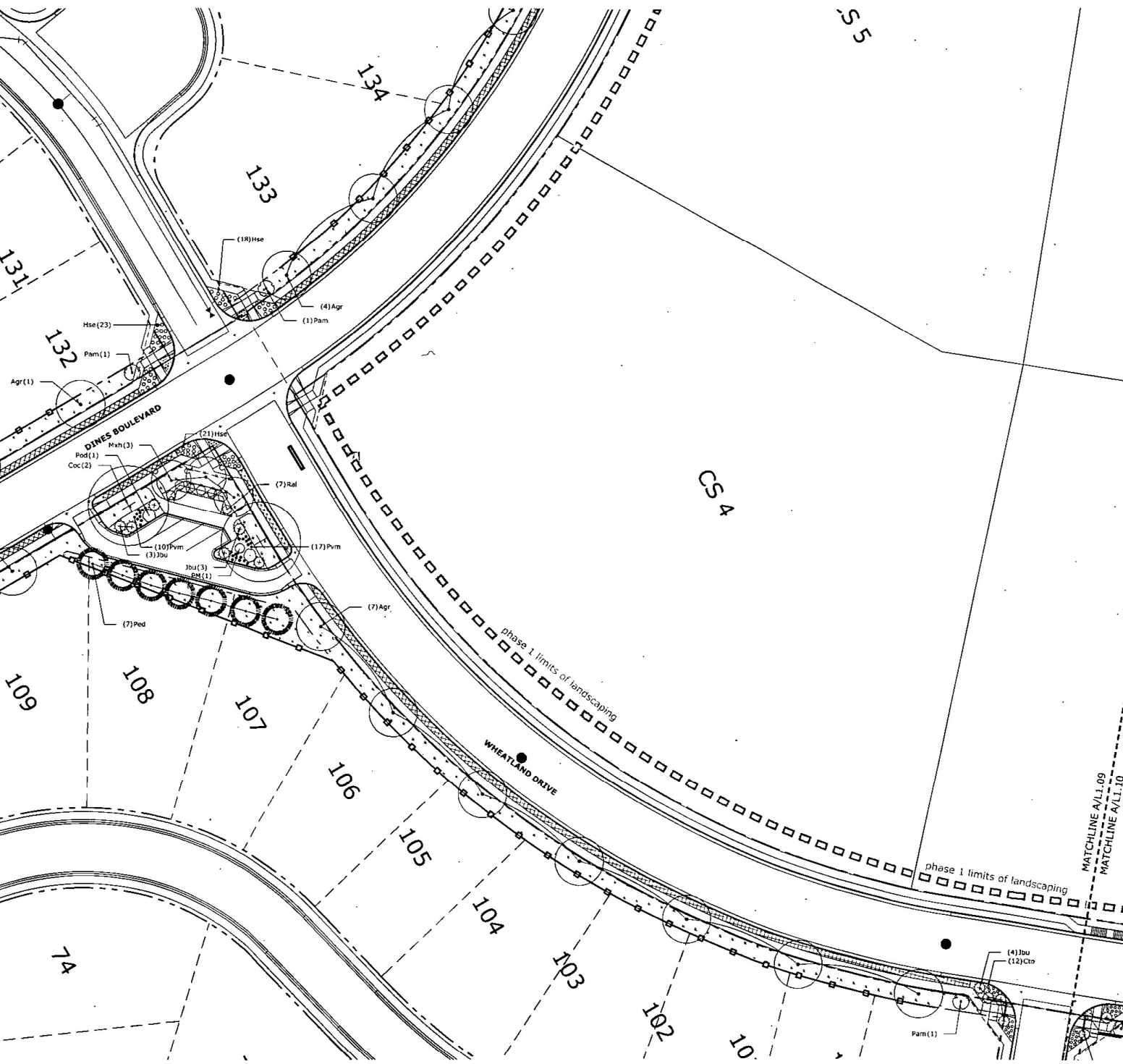
DATE:
PROJECT MGR:
PREPARED BY:

CONS
DOC

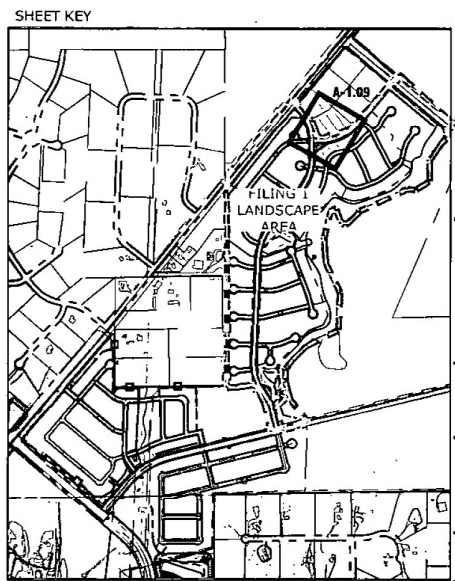
DATE: BY:
8/21/16 JAM
2/14/16 JAM

LANDSC

L1
#



LANDSCAPE LEGEND



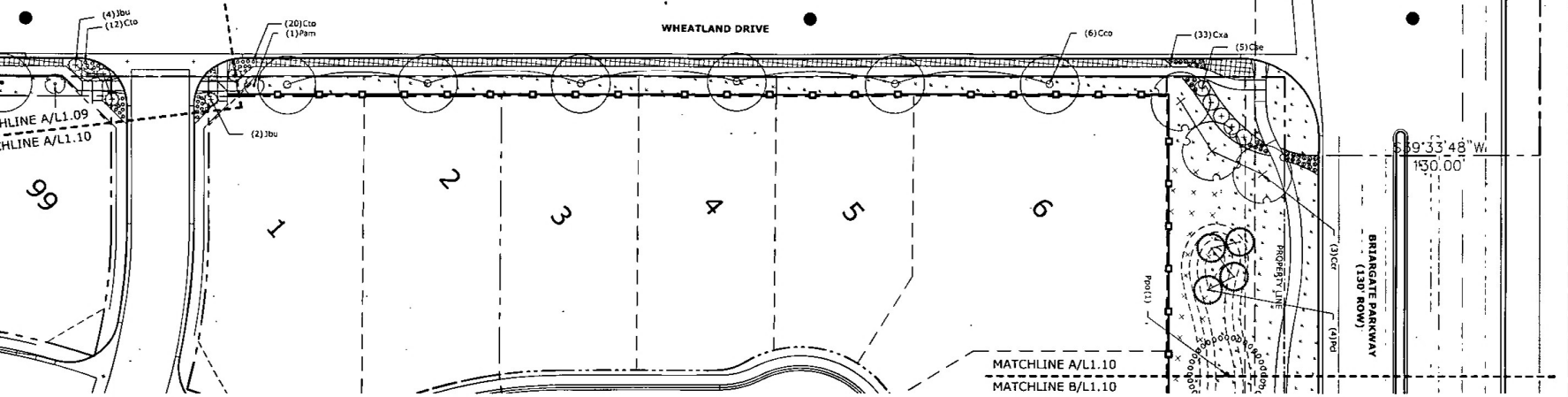
DINES BOULEVARD AND WHEATLAND DRIVE
PLAN



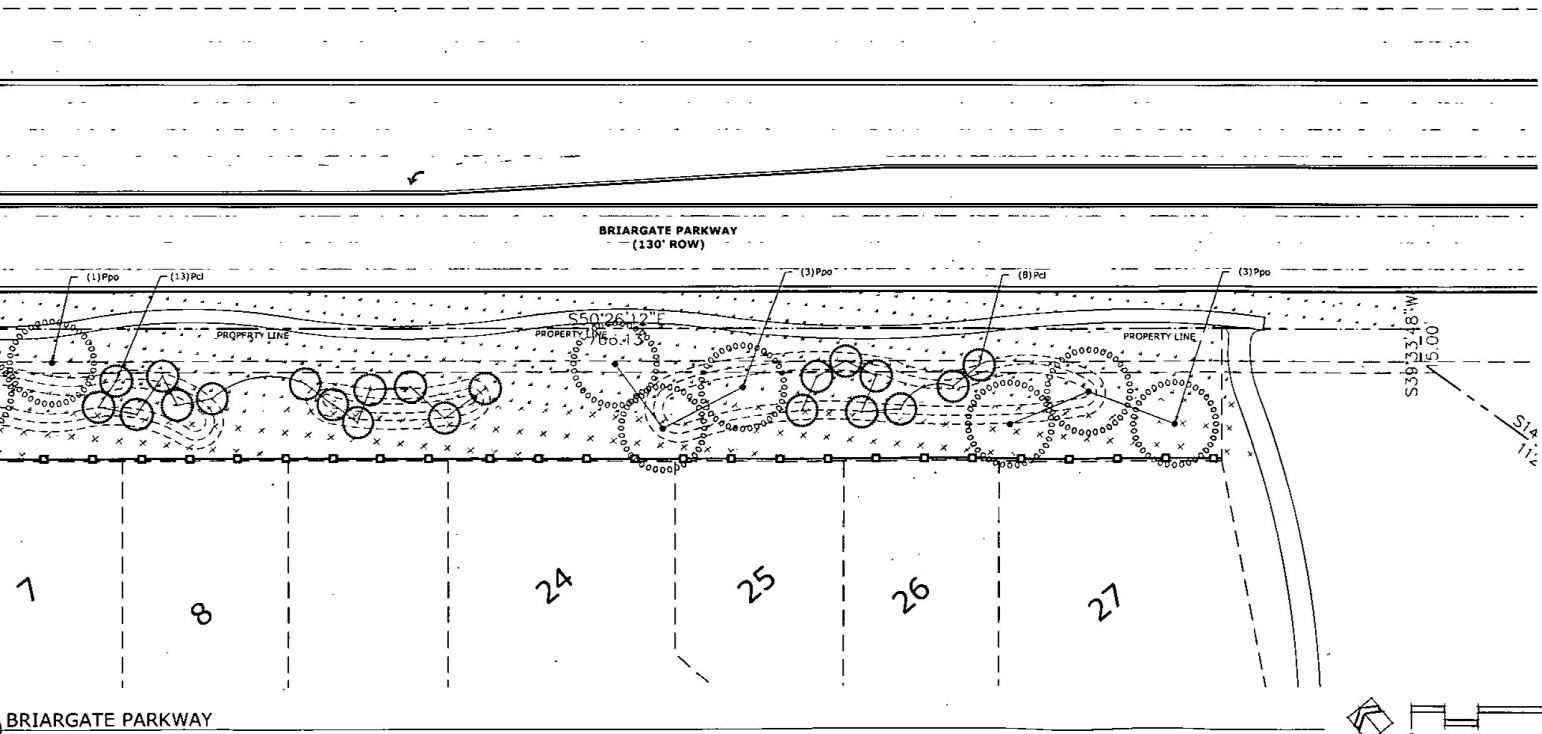
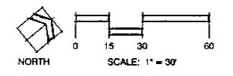

 619 N. Cas
 Colorado
 Tel.
 Fax
 www.r
 DATE:
 PROJECT NGR:
 PREPARED BY:
 CONS
 DOO
 DATE: BY
 9/21/16 JAP
 2/14/16 JAP
 LANDSC
 #

Phase 1 limits of landscaping

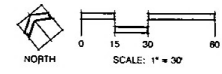
Phase 1 limits of landscaping



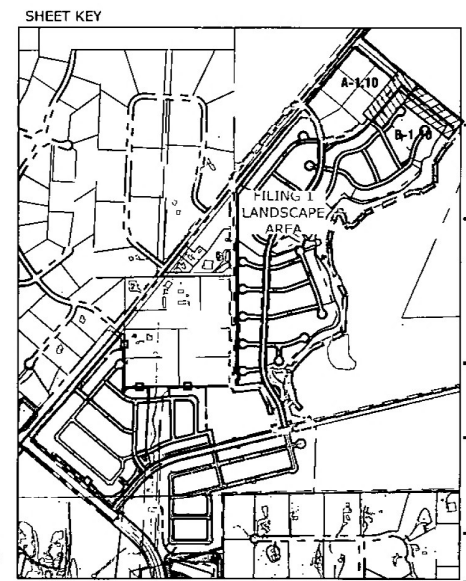
WHEATLAND DRIVE AND BRIARGATE PARKWAY
PLAN



BRIARGATE PARKWAY
PLAN



LANDSCAPE LEGEND



619 N. Cas
Colorado
Tel:
Fax:
www.n

DATE: 9/21/16
PROJECT MGR: 2/14/16
PREPARED BY:

CONS
DOC

LANDSCAPE

L1

339

338

335

3

S00°08'10"E
631.32'

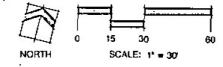
S00°22'35"E
241.35'

FUTURE PHASE

FUTURE PHASE

INDUSTRIAL BUTTER PLAN

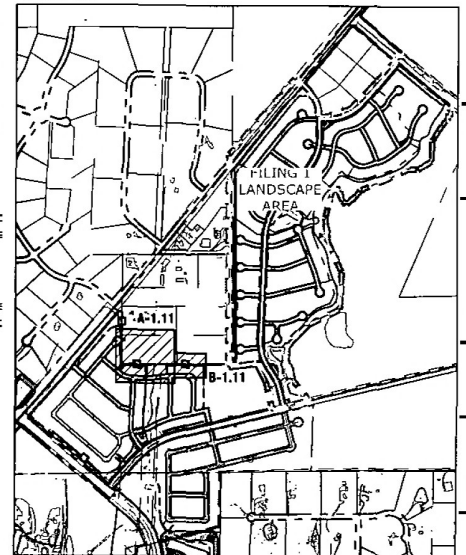
B INDUSTRIAL BUFFER L1.11 PLAN



LANDSCAPE LEGEND

	TALL NATIVE GRASS		CEDAR WOOD MULCH PLANT BED
	UPLAND NATIVE SEED MIX		ROCK MULCH
	LOW ALTERNATIVE TURF GRASS		COBBLE
	LOW-GROW NATIVE SEED MIX		
	TALL FESCUE SOD		

SHEET KEY



619 N. Cas
Colorado
Tel.
Fax
www.n

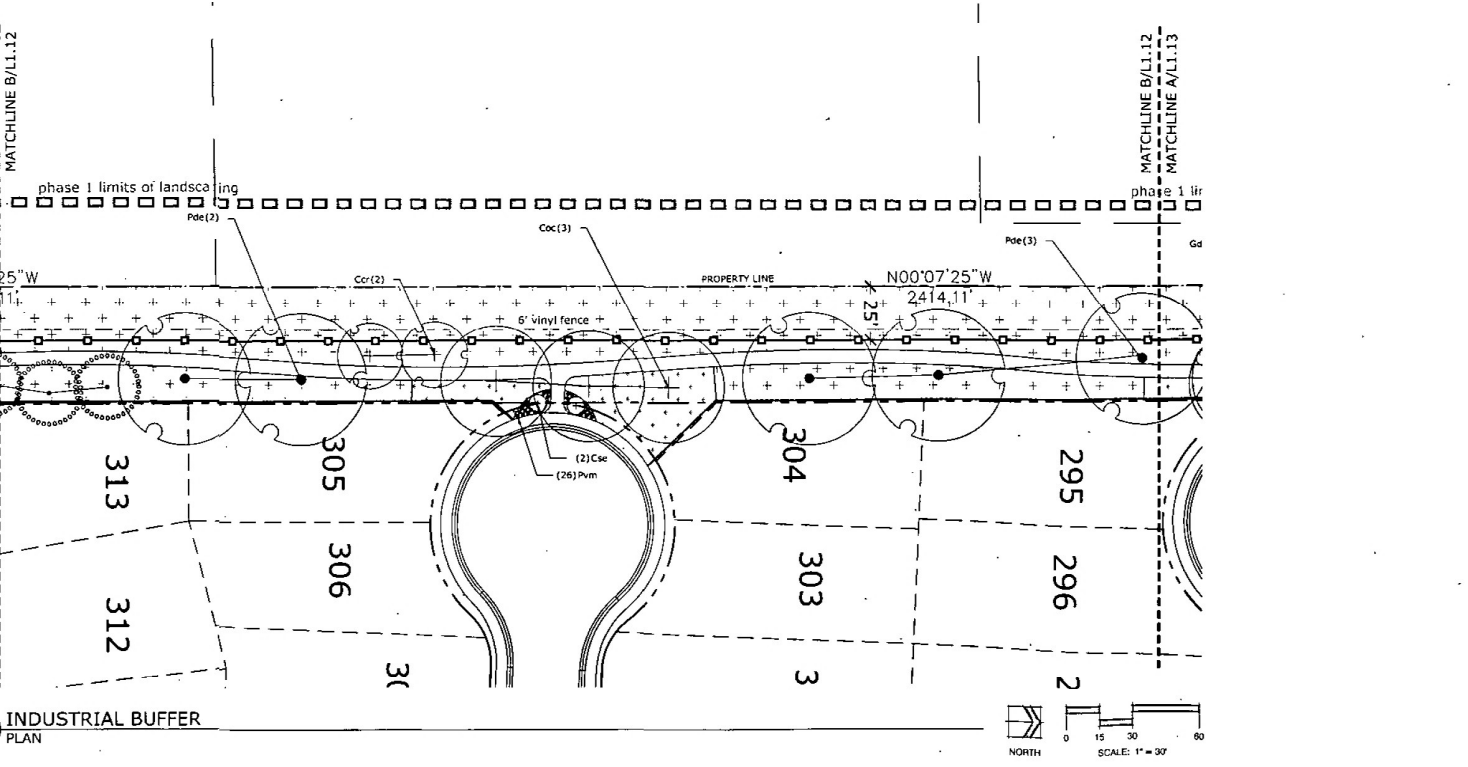
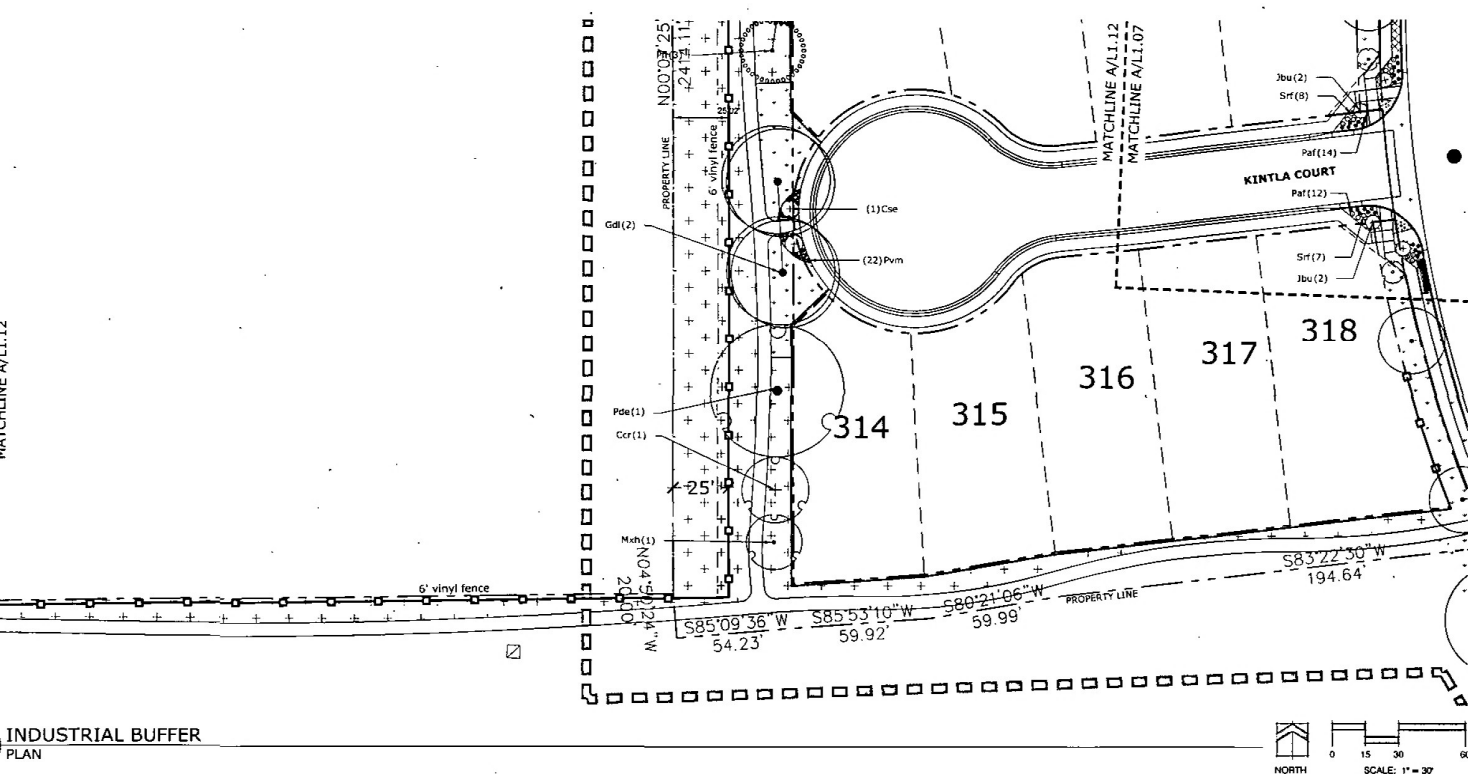
STE
RA
STRE
LAND

DATE:
PROJECT MGR:
PREPARED BY:

CONS
DOC

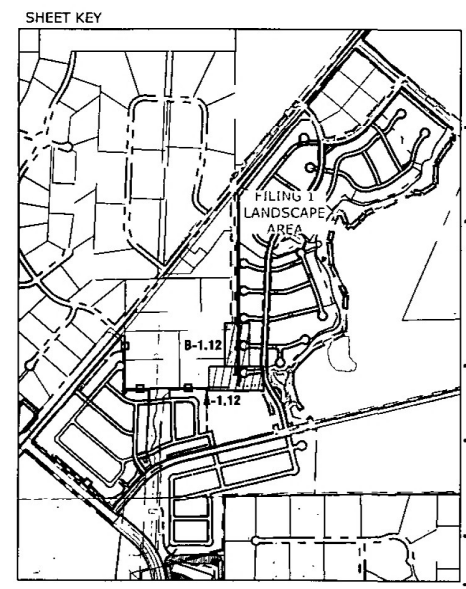
LANDSC

L 1
#



LANDSCAPE LEGEND

	TALL NATIVE GRASS		CEDAR WOOD MULCH PLANT BED
	UPLAND NATIVE SEED MIX		ROCK MULCH
	LOW ALTERNATIVE TURF GRASS		COBBLE
	LOW-GROW NATIVE SEED MIX		
	TALL FESCUE SOD		



619 N. ... Colorado ... Tel. Fax ...

DATE: PROJECT MGR: PREPARED BY:

CONS DOG

LANDSCAPE

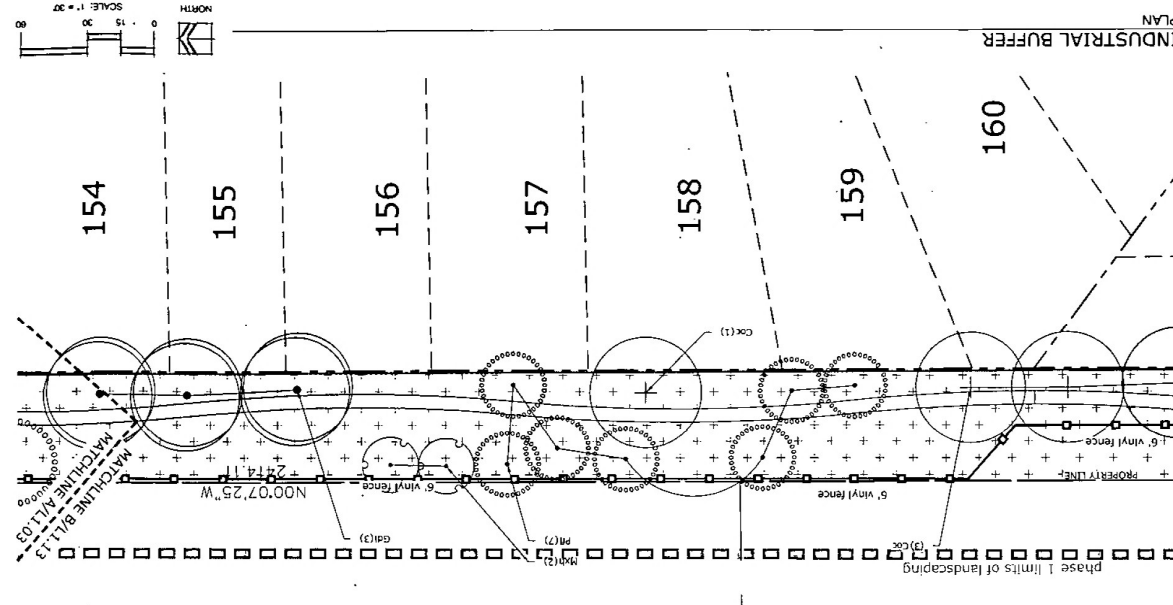
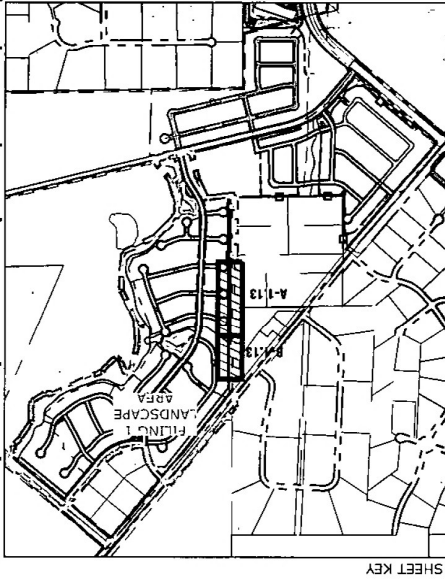
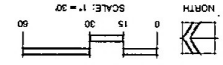
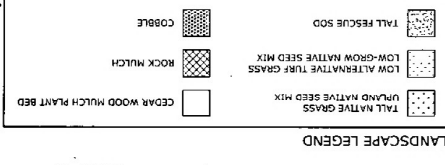
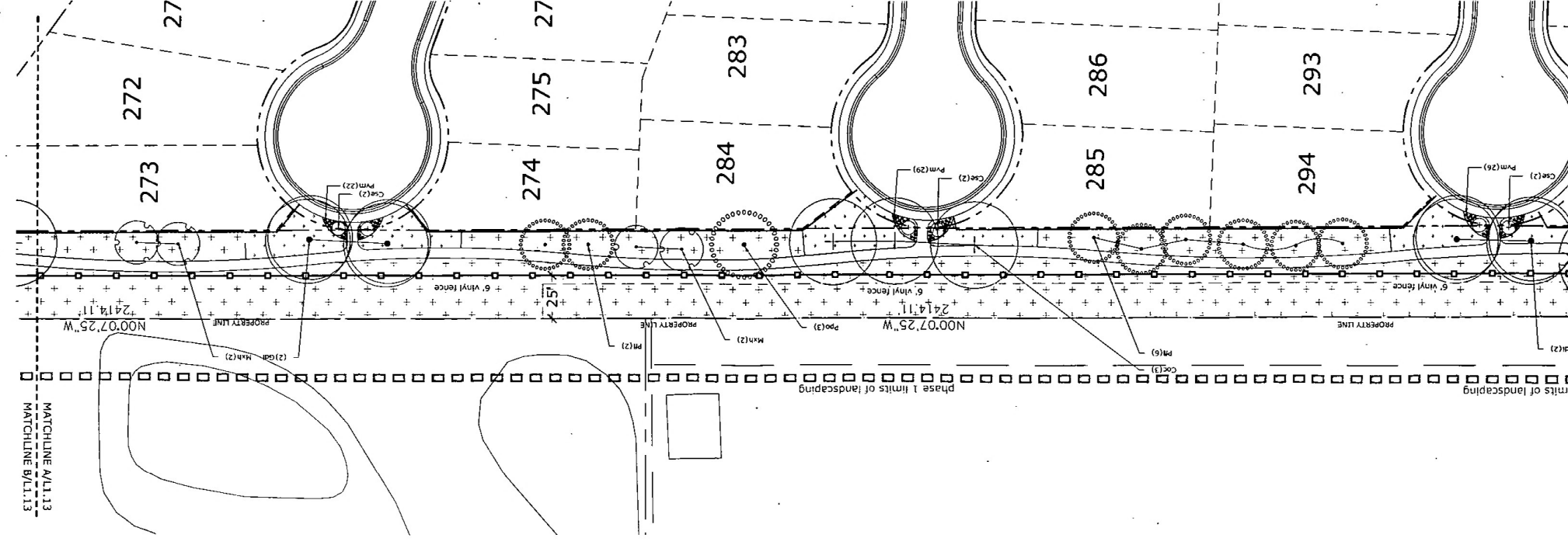
L1



1919 N. Colorado
Tel: 303.733.1111
Fax: 303.733.1112
www.landscapearchitects.com

STEVE RAY
STRANDE LANDSCAPE ARCHITECTS
DATE: 08/11/11
PROJECT NO: 11-03
DRAWN BY: JRM

CONSTRUCTION
DATE: 08/11/11
JOB NO: 11-03
SHEET NO: 11-03-01
LANDSCAPE ARCHITECTS
11-03-01



INDUSTRIAL BUFFER

INDUSTRIAL BUFFER