

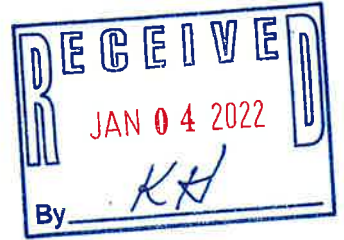
EL PASO COUNTY

COLORADO

COMMISSIONERS:
STAN VANDERWERF (CHAIR)
CAMI BREMER (VICE-CHAIR)

LONGINOS GONZALEZ, JR.
HOLLY WILLIAMS
CARRIE GEITNER

PLANNING AND COMMUNITY DEVELOPMENT DEPARTMENT
CRAIG DOSSEY, EXECUTIVE DIRECTOR



12/29/2021

RE: Administrative Special Use Request for City Link Trucking Special Use Permit

File: AL2121
Parcel ID No.:44150-00-021

To Whom It May Concern:

This letter is to inform property owners adjacent to 225 North Curtis Road that the applicant, Land View LLC, has requested approval of a special use application to allow for a contractor's equipment storage yard within the CS (Commercial Service) zoning district. The Planning and Community Development Director may make a formal decision regarding the request on 1/13/2022. Any comments or questions may be forwarded to me prior to that decision. At the discretion of the Planning and Community Development Director, the approval process may be elevated to the Board of County Commissioners for consideration. All administrative decisions, such as this one, may be appealed to the Board of County Commissioners within 30 days of the date of the decision.

You may view the application documents online at www.epcdevplanreview.com. Please feel free to contact me with any questions, comments, or concerns you may have prior to the decision.

Respectfully,

Ryan Howser, Planner II
El Paso County Planning and Community Development
719-520-6300
RyanHowser@elpasoco.com

2880 INTERNATIONAL CIRCLE, SUITE 110
PHONE: (719) 520-6300



COLORADO SPRINGS, CO 80910-3127
FAX: (719) 520-6695

WWW.ELPASOCO.COM

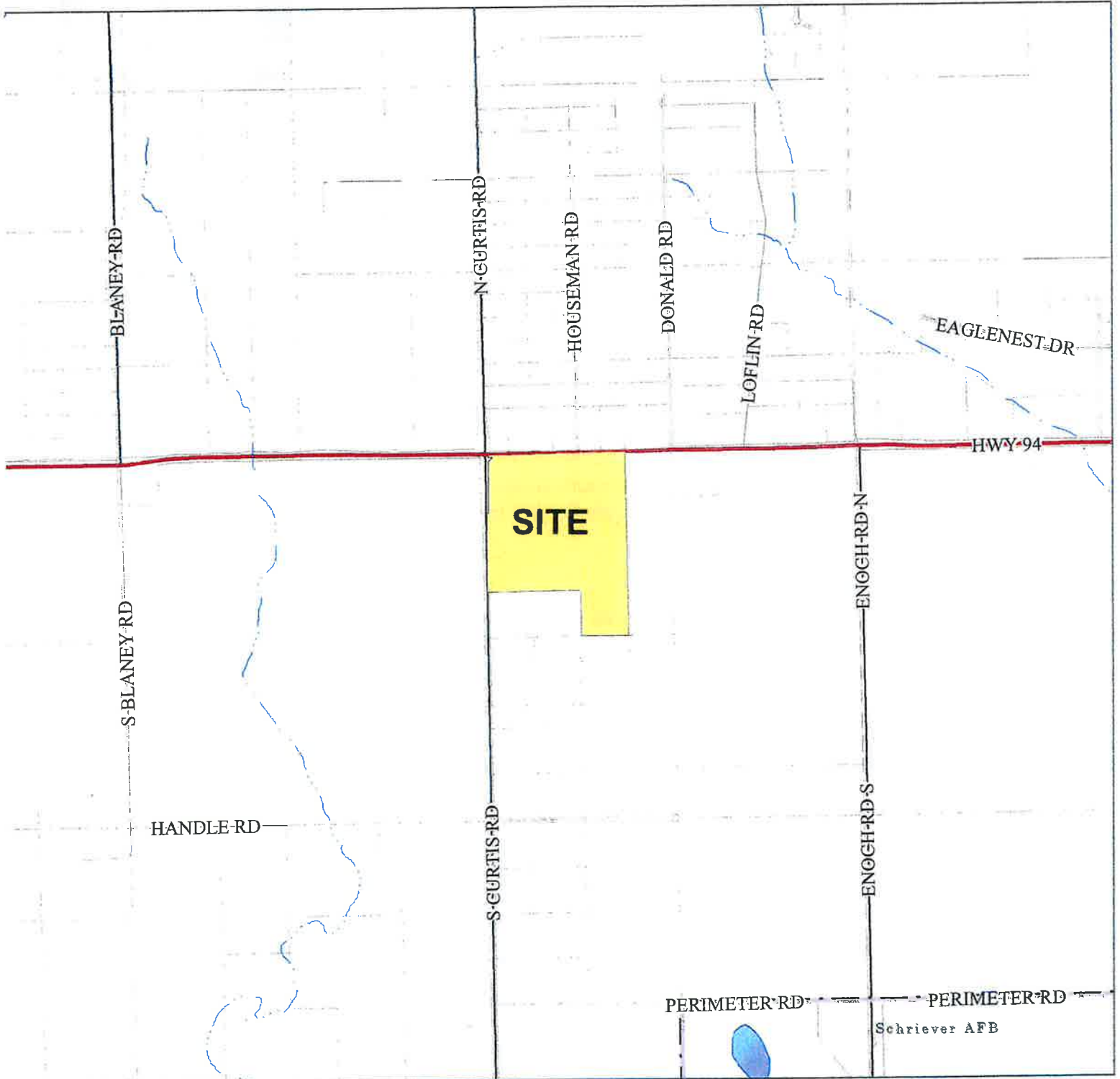
El Paso County Parcel Information

2021
APR 14 11:11 AM
10/11

File Name: **AL2121**

Zone Map No.: **--**

Date: **December 27, 2021**



Please report any parcel discrepancies to:
El Paso County Assessor
1675 W. Garden of the Gods Rd.
Colorado Springs, CO 80907
(719) 520-6600



COPYRIGHT 2018 by the Board of County Commissioners, El Paso County, Colorado. All rights reserved. No part of this document or data contained hereon may be reproduced, used to prepare derivative products, or distributed without the specific written approval of the Board of County Commissioners, El Paso County, Colorado. This document was prepared from the best data available at the time of printing. El Paso County, Colorado, makes no claim as to the completeness or accuracy of the data contained hereon.



Planning and Community Development Department
2880 International Circle, Suite 110
Colorado Springs, CO 80910

NSJ

4410000132
VENGA TU REINO INC
6362 WALLOWING WAY
COLORADO SPRINGS, CO 80925

DENVER CO 802

29 DEC 2021 PM 8:11

FIRST CLASS



US POSTA



ZIP 80910
02 7H
0001332609

NIXTE 008 DE 1 0001

RETURN TO SENDER
NO SUCH NUMBER
UNABLE TO FORWARD

80925 80910 80910
80910 80910 80910

80: 80910 80910 *1028-8545
80910 80910 80910