

7							
6							
5							
4							
3							
2							
1							

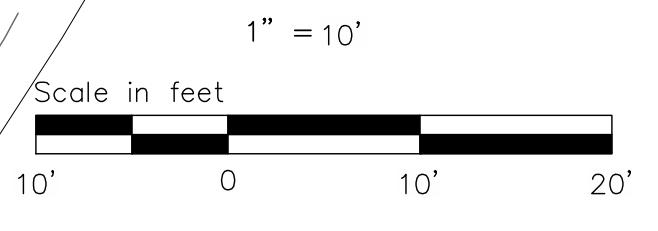
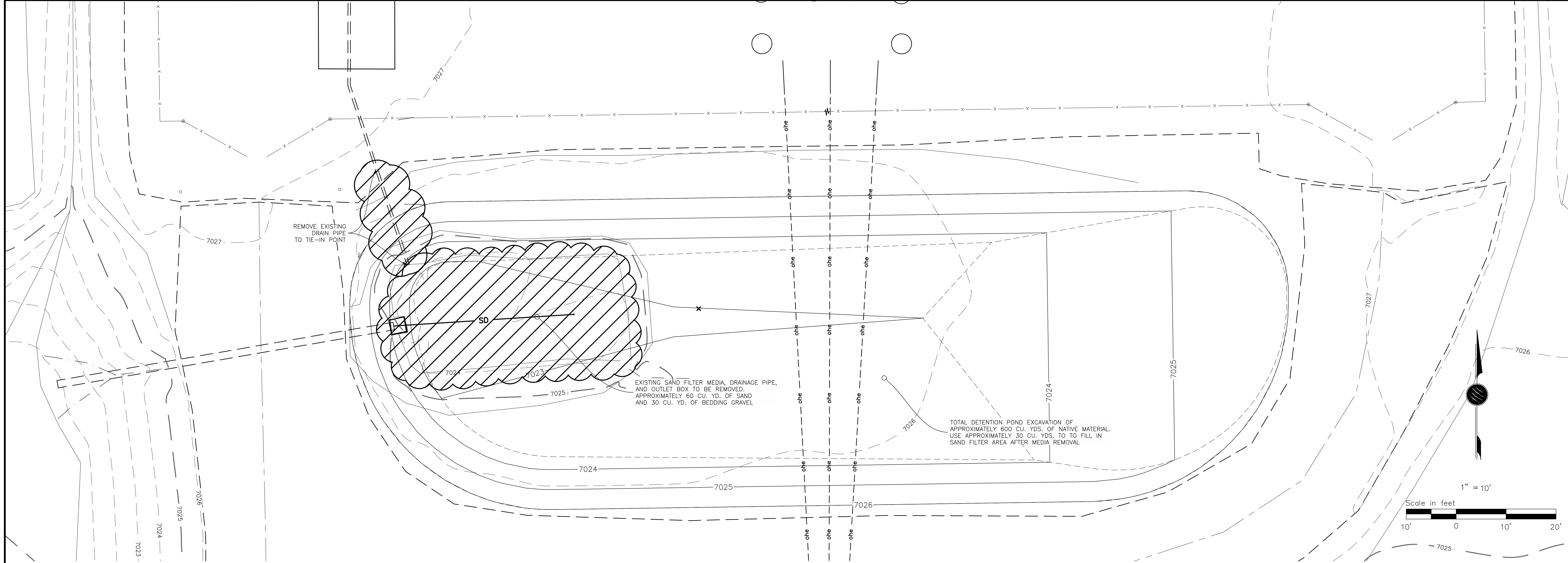
VOLLMER DRAINAGE IMPROVEMENTS
115 KV

LAYOUT, GRADING, & DRAINAGE DETAILS & TRANSMISSION ASSOCIATION, INCORPORATED

DATE: 6/19/2024 6:57 AM
APPD: TOLEMET
CONTRACT: 303-452-6111

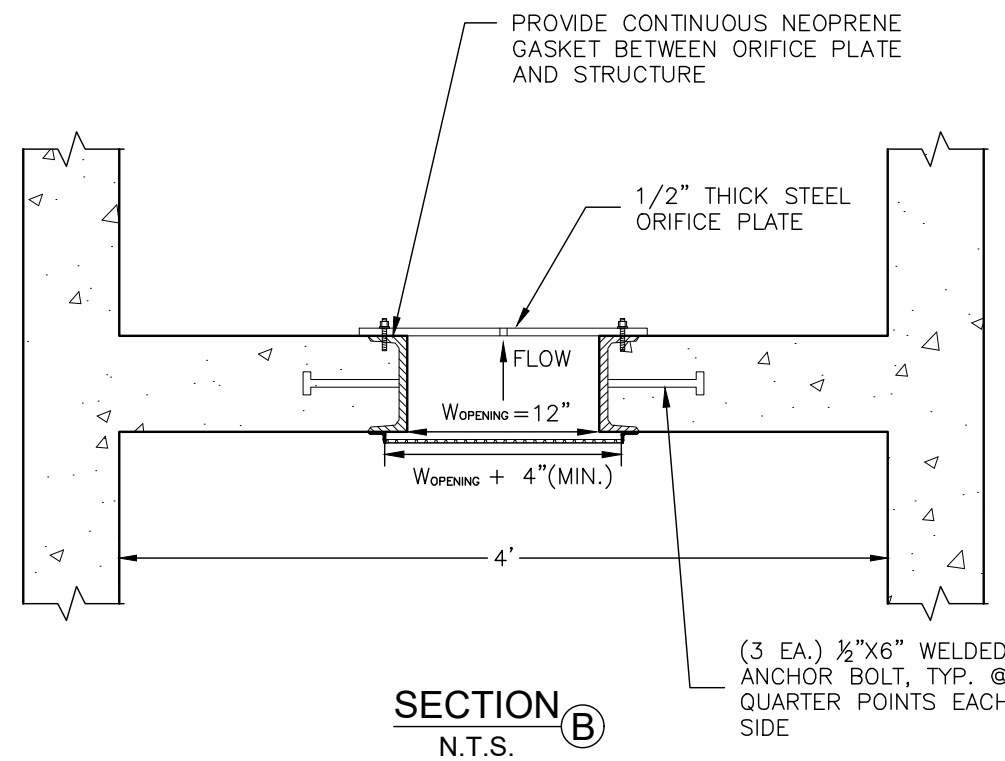
Dwn: TMC Date: 06/19/24
Appd: Date:

S1150-A-01-011

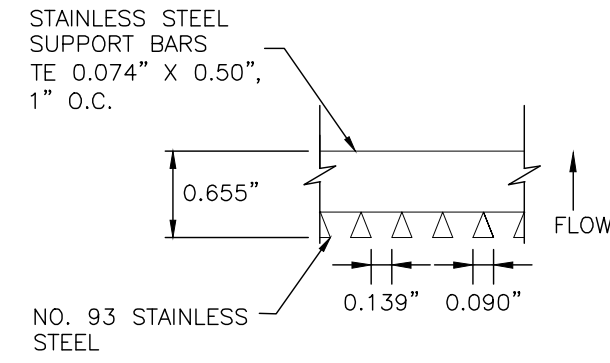


TRI-STATE Generation and Transmission Association, Inc. 1100 W. 116th Ave. P.O. Box 338905 Denver, Colorado 80233 303-452-6111		VOLLMER DRAINAGE IMPROVEMENTS 115 KV LAYOUT & GRADING TRI-STATE GENERATION & TRANSMISSION ASSOCIATION, INCORPORATED UPDATED BY: TCLEMENT 6/19/2024 6:57 AM Contract:		Dwn: TMC Date: 06/19/24 Appd: Date:	
PATH: \\DMS1\A\Projects\Active\Projects\2023\23203-Vollmer Sub Drainage BA\Facility\Civil\Media\23203C_BA5E.dwg		No. 1 Date . Dwn. . Appd. . 2 3 4 5 6 7		Revision M.F.	
115 KV LAYOUT & GRADING TRI-STATE GENERATION & TRANSMISSION ASSOCIATION, INCORPORATED		6/19/2024 6:57 AM Contract:		Dwg. No. Mgr. Reference Drawings Drawing Title	

S1150-A-01-011R



SECTION B
N.T.S.



SECTION C
N.T.S.

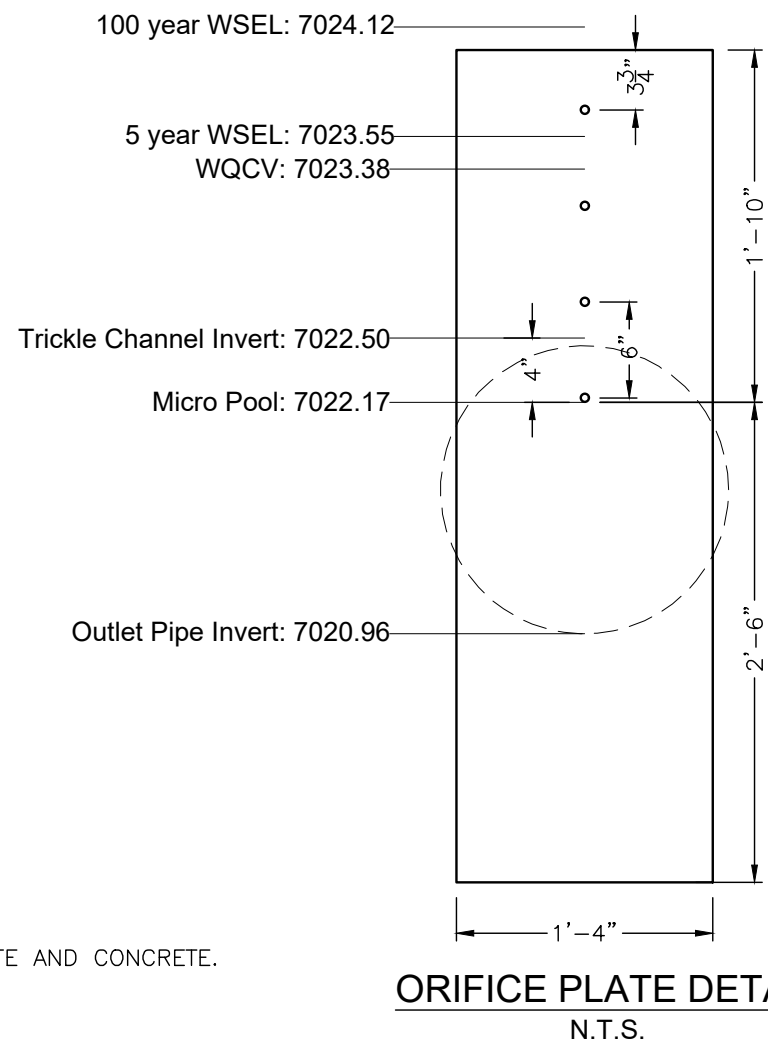
$R \text{ VALUE} = \frac{\text{NET OPEN AREA}}{\text{GROSS RACK AREA}} = 0.60$

- ORIFICE PLATE NOTES:
1. PROVIDE CONTINUOUS NEOPRENE GASKET MATERIAL BETWEEN THE ORIFICE PLATE AND CONCRETE.
 2. BOLT THRU TO CONCRETE 12" MAX. ON CENTER.

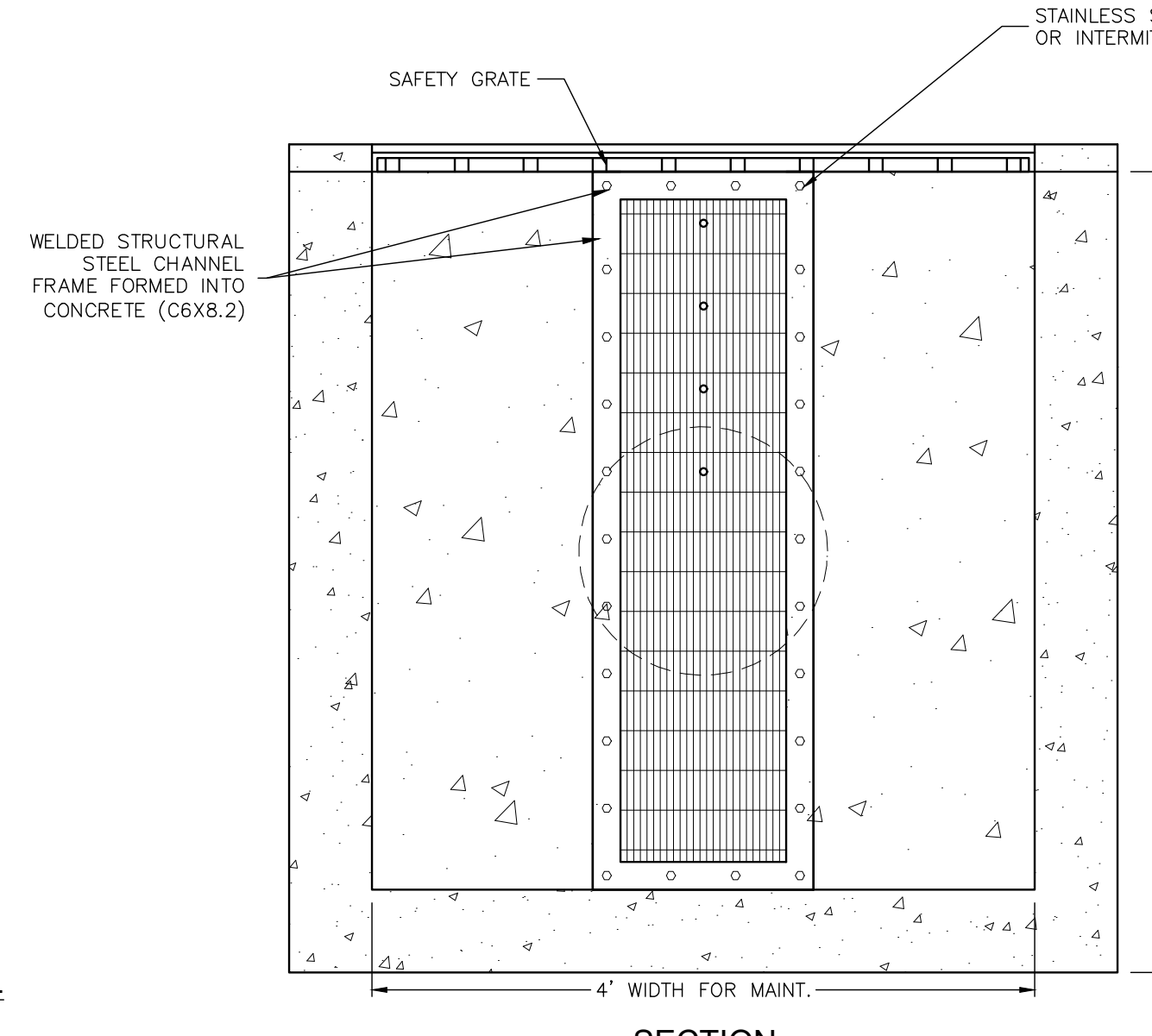
- WOCV TRASH RACKS:
1. WELL-SCREEN TRASH RACKS SHALL BE STAINLESS STEEL AND SHALL BE ATTACHED BY INTERMITTENT WELDS ALONG THE EDGE OF THE MOUNTING FRAME.

- OVERFLOW SAFETY GRATES:
1. ALL SAFETY GRATES SHALL BE MOUNTED USING STAINLESS STEEL HARDWARE AND PROVIDED WITH HINGED AND LOCKABLE OR BOLTABLE ACCESS PANELS.
 2. SAFETY GRATES SHALL BE STAINLESS STEEL, ALUMINUM, OR STEEL. STEEL GRATES SHALL BE HOT DIP GALVANIZED AND MAY BE HOT POWDER COATED AFTER GALVANIZING.

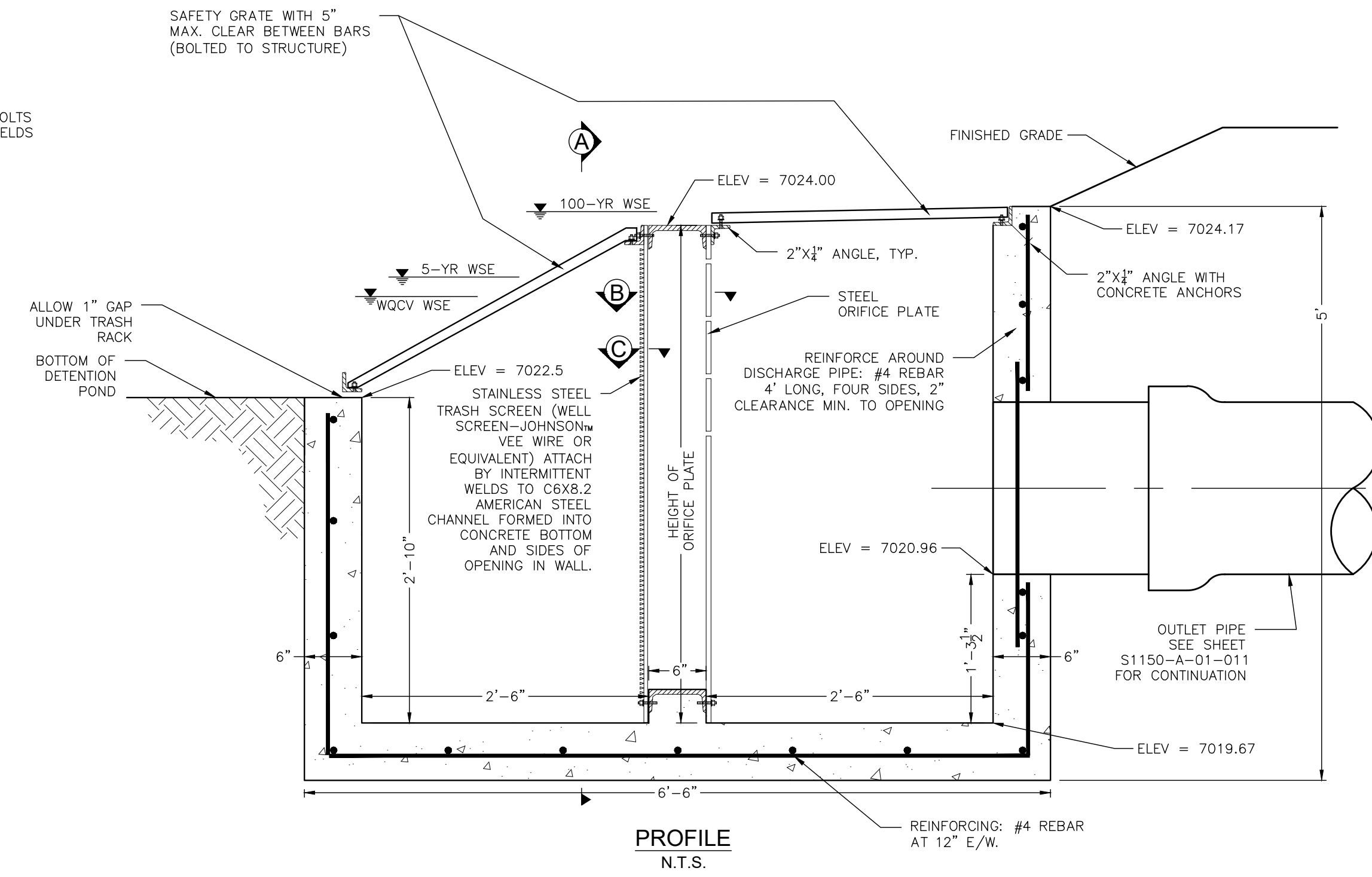
ORIFICE PLATE AND TRASH RACK
DETAILS AND NOTES



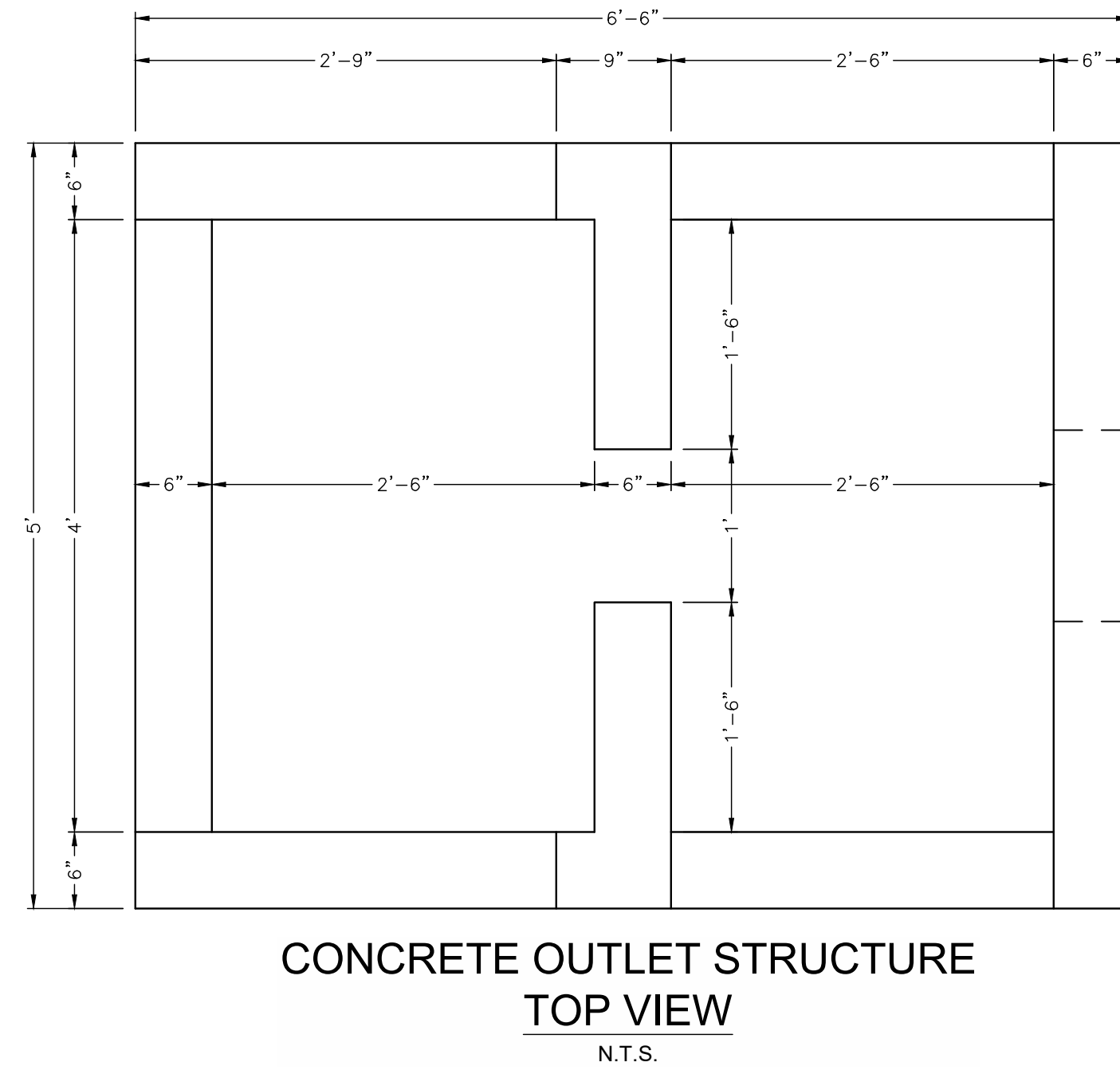
ORIFICE PLATE DETAIL
N.T.S.



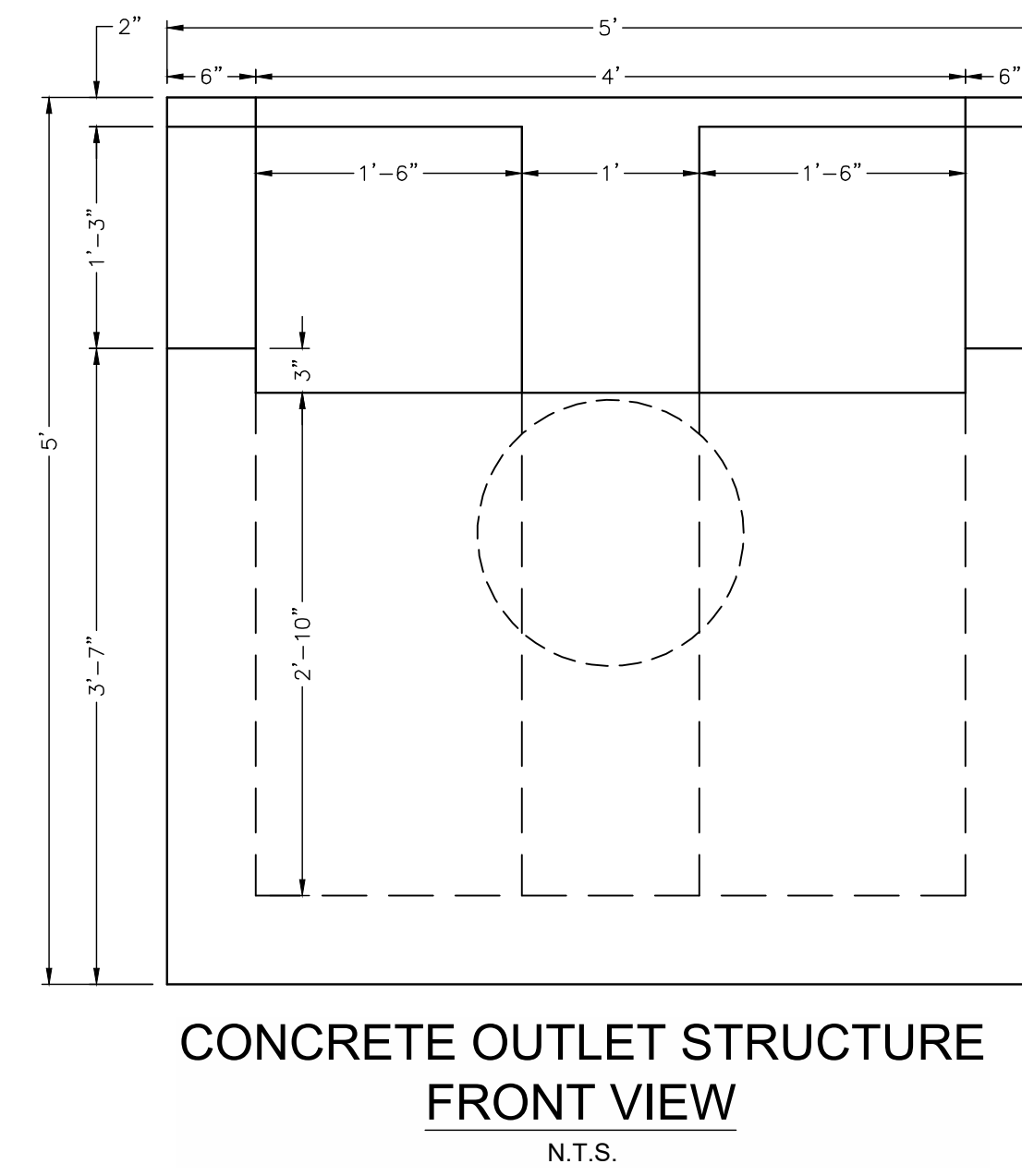
SECTION A
N.T.S.



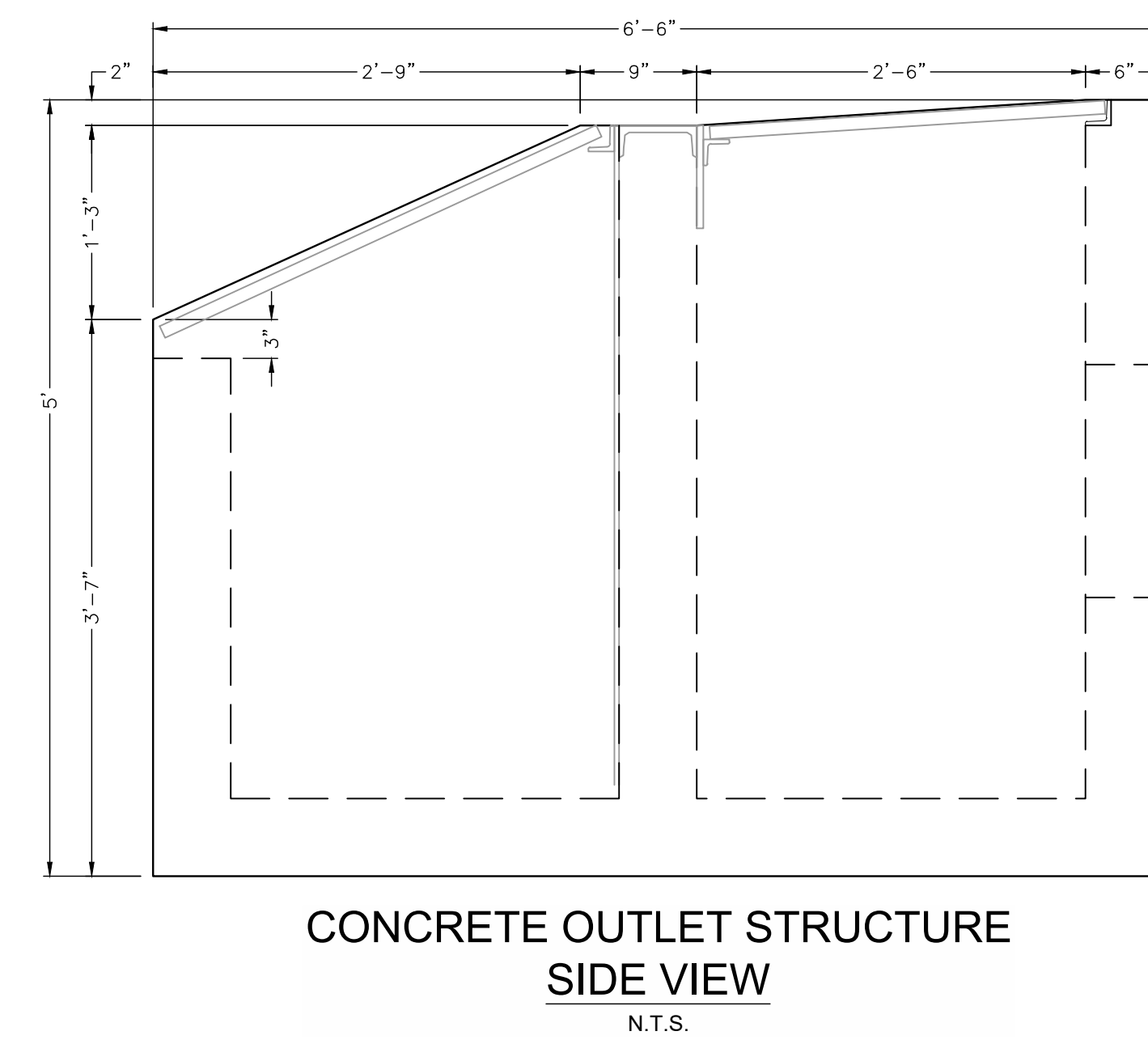
PROFILE
N.T.S.



CONCRETE OUTLET STRUCTURE
TOP VIEW
N.T.S.



CONCRETE OUTLET STRUCTURE
FRONT VIEW
N.T.S.



CONCRETE OUTLET STRUCTURE
SIDE VIEW
N.T.S.

7		VOLLMER DRAINAGE IMPROVEMENTS 115 KV OUTLET STRUCTURE DETAILS TRI-STATE GENERATION & TRANSMISSION ASSOCIATION, INCORPORATED 1100 W. 116th AVE. P.O. Box 338905 Denver, Colorado 80233 303-452-6111 PATH: \\DMS1\Projects\Active\Projects\2023\23203-Vollmer Sub Drainage BA\Facility\Civil\Meeta\23203C_BA5E.dwg	UPDATED BY: TOLEMET 6/19/2024 6:57 AM Contract:	No. Date Dwn. Appd.	Revision M.F.	Dwg. No. Mgr. Reference Drawings	Drawing Title
6							
5							
4							
3							
2							
1							

TRI-STATE
 Generation and Transmission Association, Inc.
 1100 W. 116th Ave.
 P.O. Box 338905
 Denver, Colorado 80233
 303-452-6111

Dwn:	Date:
TMC	06/19/24
Appd:	Date:

S1150-A-01-012