

Black Hills Energy Pole & Arm Replacement Dessert Cove to Midway Site Development Plan



LEGEND

-  Proposed Soil Boring Location
-  Substation
-  Black Hills Power
-  Public Service Co of Colorado
-  Prairie Dogs
-  Water Pipeline
-  Canal / Ditch
-  Stream / River (Intermittent)
-  NW1 Wetlands
-  Township & Range
-  First Division (Sections)
-  Network of Conservation Area

Approved

By: Craig Dossey, Executive Director

Date: 09/16/2019

El Paso County Planning & Community Development



PROJECT OVERVIEW

DESERT COVE TO MIDWAY 115 KV TRANSMISSION LINE

PAGE 1 OF 6



-  Proposed Soil Boring Location
-  Substation
-  Black Hills Power
-  Public Service Co of Colorado
-  Natural Gas Pipeline
-  Prairie Dogs
-  Water Pipeline
-  Canal / Ditch
-  Stream / River
-  Stream / River (Intermittent)
-  NWI Wetlands
-  Township & Range
-  First Division (Sections)
-  Network of Conservation Area
-  Conservation Easement
-  PCA Biodiversity Significance Rank
-  B1: Outstanding Biodiversity Significance
-  Cultural Site
-  Not Eligible




PAGE 2 OF 6



- LEGEND
- Proposed Soil Boring Location
 - Black Hills Power
 - Public Service Co of Colorado
 - Water Pipeline
 - Canal / Ditch
 - Stream / River
 - Stream / River (Intermittent)
 - NWI Wetlands
 - Township & Range
 - First Division (Sections)
 - State
 - Network of Conservation Area
 - Conservation Easement
 - PCA Biodiversity Significance Rank
 - B1: Outstanding Biodiversity Significance

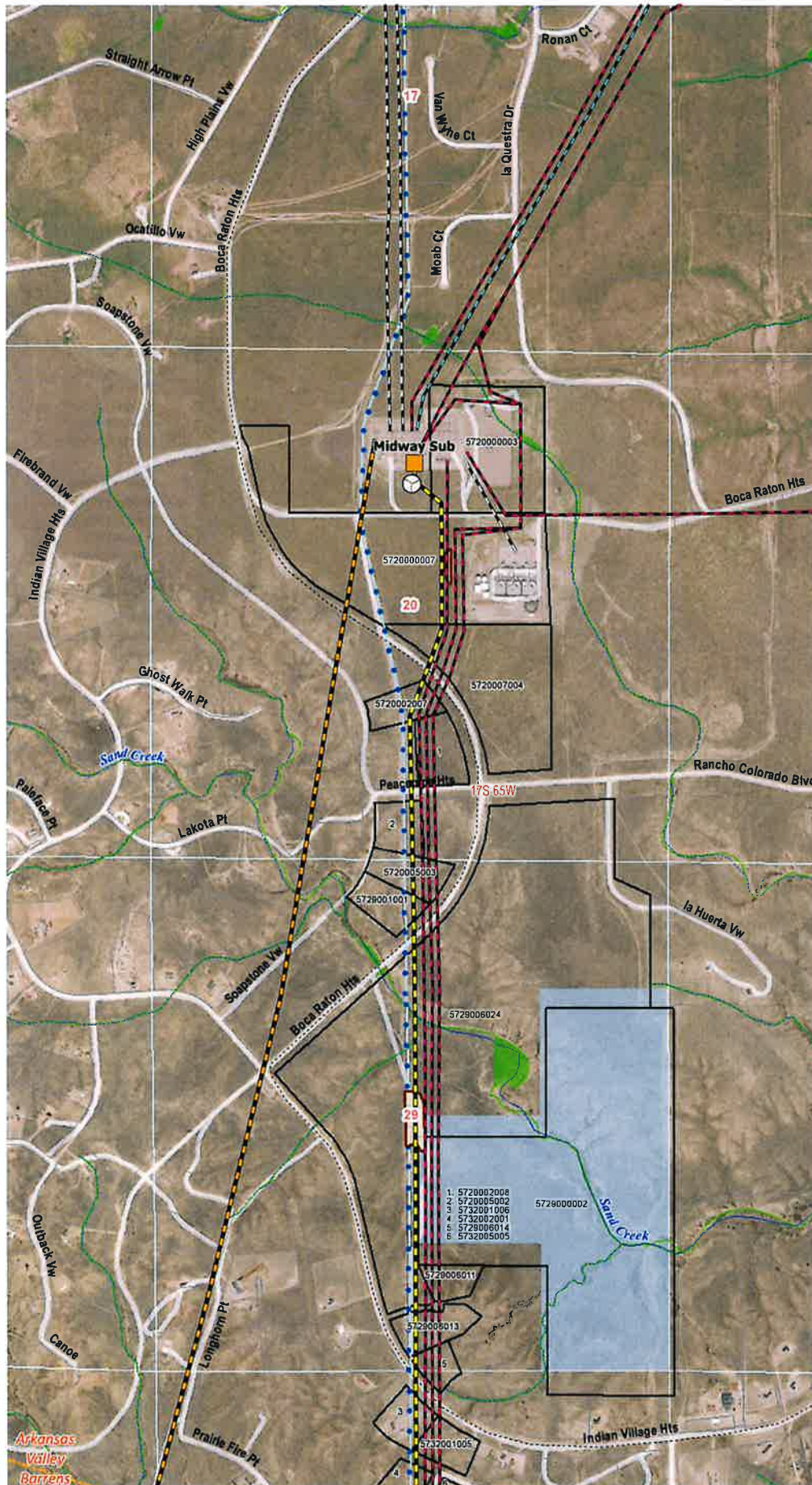




-  Black Hills Power
-  Public Service Co of Colorado
-  Western Area Power Administration
-  Parcel Boundary
-  Trail
-  Water Pipeline
-  Stream / River
-  Stream / River (Intermittent)
-  NWI Wetlands
-  Township & Range
-  First Division (Sections)
-  State
-  Network of Conservation Area



PAGE 5 OF 6

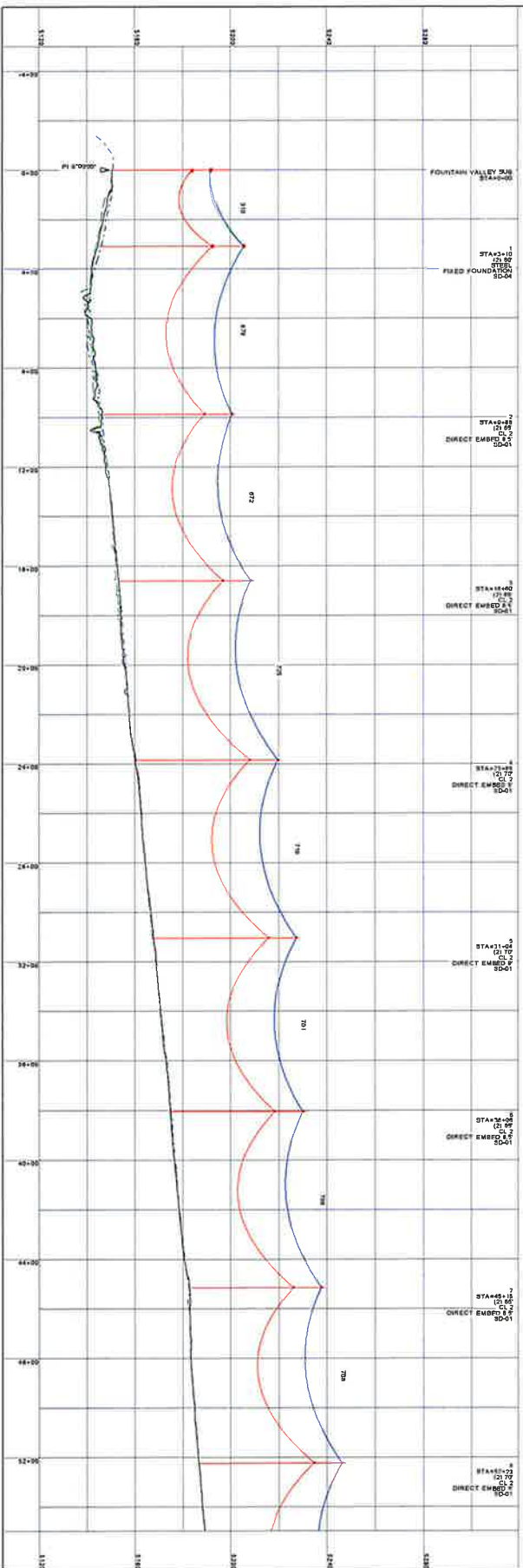


- LEGEND
- Proposed Soil Boring Location
 - Substation
 - Black Hills Power
 - Public Service Co of Colorado
 - Tri State Generation & Transmission Association Inc
 - Undetermined Company
 - Western Area Power Administration
 - Parcel Boundary
 - Prairie Dogs
 - Trail
 - Water Pipeline
 - Stream / River
 - Stream / River (Intermittent)
 - NW1 Wetlands
 - Township & Range
 - First Division (Sections)
 - State
 - Network of Conservation Area





ORGW: AFL-DNO-8188
 SHIELD: 3/8" EHS 7-STRAND
 CONDUCTOR: 785 KCMIL "BRAKE" ACSR 267



H-32

PROJECT NUMBER	J. ELDMORTH
DESIGN ENGINEER	K. BAKER
CAD TECHNICIAN	M. BROWNE
DATE	
ISSUE	
DESCRIPTION	
PROJECT NUMBER	115KV

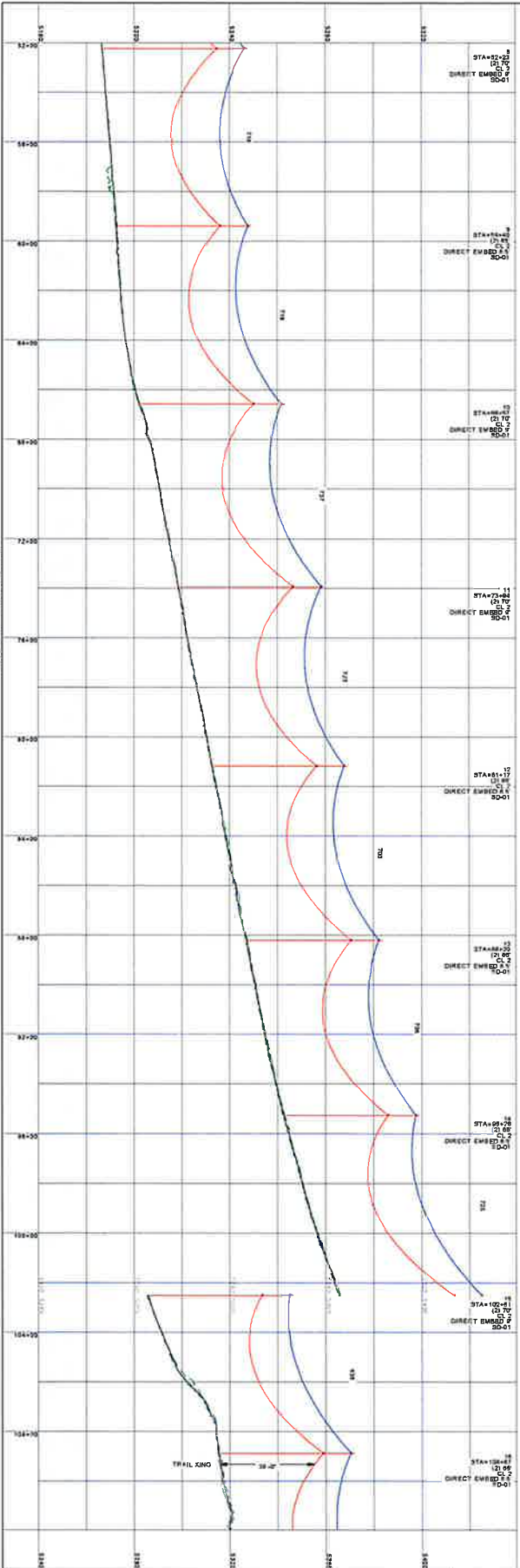
BLACK HILLS ENERGY
 PUEBLO, COLORADO
 FOUNTAIN VALLEY - MIDWAY
 115KV TRANSMISSION LINE

PLAN & PROFILE
 FOUNTAIN VALLEY - MIDWAY
 115KV TRANSMISSION LINE

PP-1



OPGW: AFL-DNC-8189
SHIELD: 3/8" EHS 7-STRAND
CONDUCTOR: 795 KCMIL "DRAKE" ACSR 26/7



HJR

PROJECT MANAGER		PROJECT NUMBER	
J. K. KENNEDY		115KV TRANSMISSION LINE	
DESIGNED BY		DATE	
K. KENNEDY		11/11/2011	
CHECKED BY		DATE	
M. KENNEDY		11/11/2011	
APPROVED BY		DATE	
J. K. KENNEDY		11/11/2011	

BLACK HILLS ENERGY
PUEBLO, COLORADO
FOUNTAIN VALLEY - MIDWAY
115KV TRANSMISSION LINE

PLAN & PROFILE
FOUNTAIN VALLEY - MIDWAY
SHEET
PP-2

22

The drawing is a technical cross-section of a road. The centerline is marked with stationing from 124+00 to 129+00. The road is flanked by shoulders and embankments. The drawing includes a grid with horizontal and vertical lines. The horizontal axis represents the road's width, and the vertical axis represents the elevation. The drawing is labeled with 'TRAIL KING' and 'DIRECT EMBANKMENT'. The drawing also includes a grid with horizontal and vertical lines. The horizontal axis represents the road's width, and the vertical axis represents the elevation. The drawing is labeled with 'TRAIL KING' and 'DIRECT EMBANKMENT'.



123

[illegible]

BLACK HILLS ENERGY
PUEBLO, COLORADO

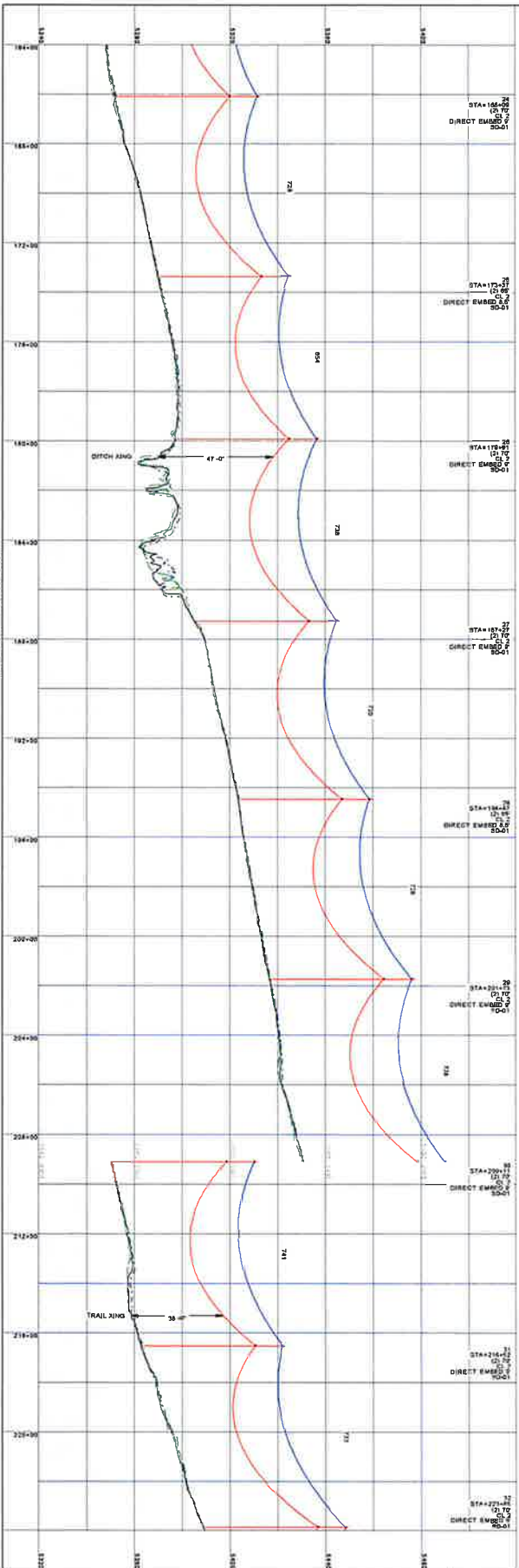
PLAN & PROFILE FOUNTAIN VALLEY - MIDWAY

2008 FT. HONOLULU, SCALP
350 FT. VERM. SCALP

PP-3



OPGW: AFL-DNO-8189
SHIELD: 3/8" EHS 7-STRAND
CONDUCTOR: 795 KCMIL "DRAKE" ACSR 26/7





H3E

PROJECT MANAGER	
PROJECT MANAGER	J. K. KENNEDY
PROJECT ENGINEER	K. K. KENNEDY
DESIGN ENGINEER	K. K. KENNEDY
QA/QC TECHNICIAN	M. K. KENNEDY
PROJECT NUMBER	1011204

DATE: 10/1/2014

REVISION: 1

DESCRIPTION: 1011204

BLACK HILLS ENERGY
PUEBLO, COLORADO

FOUNTAIN VALLEY - MIDWAY
115KV TRANSMISSION LINE

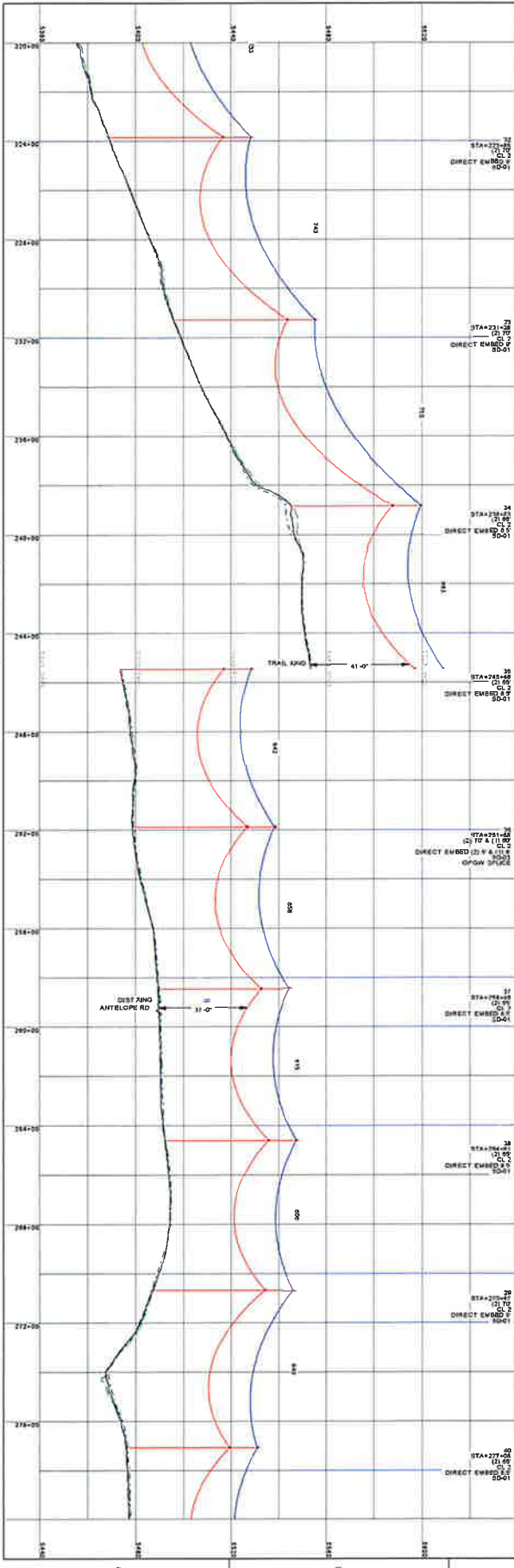
PLAN & PROFILE
FOUNTAIN VALLEY - MIDWAY

300.0 FT. - HORIZ. SCALE
20.0 FT. - VERT. SCALE

SHEET
PP-4



OPGW: AFL-DNO-8-189
 SHIELD: 3/8" EHS 7-STRAND
 CONDUCTOR: 785 KCMIL "DRAKE" ACSR 26/7



A	REV	DESCRIPTION
1	01/20/18	ISSUE FOR REVIEW

PROJECT MANAGER J. BLUMENFELD	DESIGNER K. BAUER	CHECKER K. BAUER
SENIOR ENGINEER K. BAUER	DESIGNER K. BAUER	CHECKER K. BAUER
PROJECT NUMBER 214124		

BLACK HILLS ENERGY
 PUEBLO, COLORADO

PLAN & PROFILE
 FOUNTAIN VALLEY - MIDWAY

FOUNTAIN VALLEY - MIDWAY
 115KV TRANSMISSION LINE

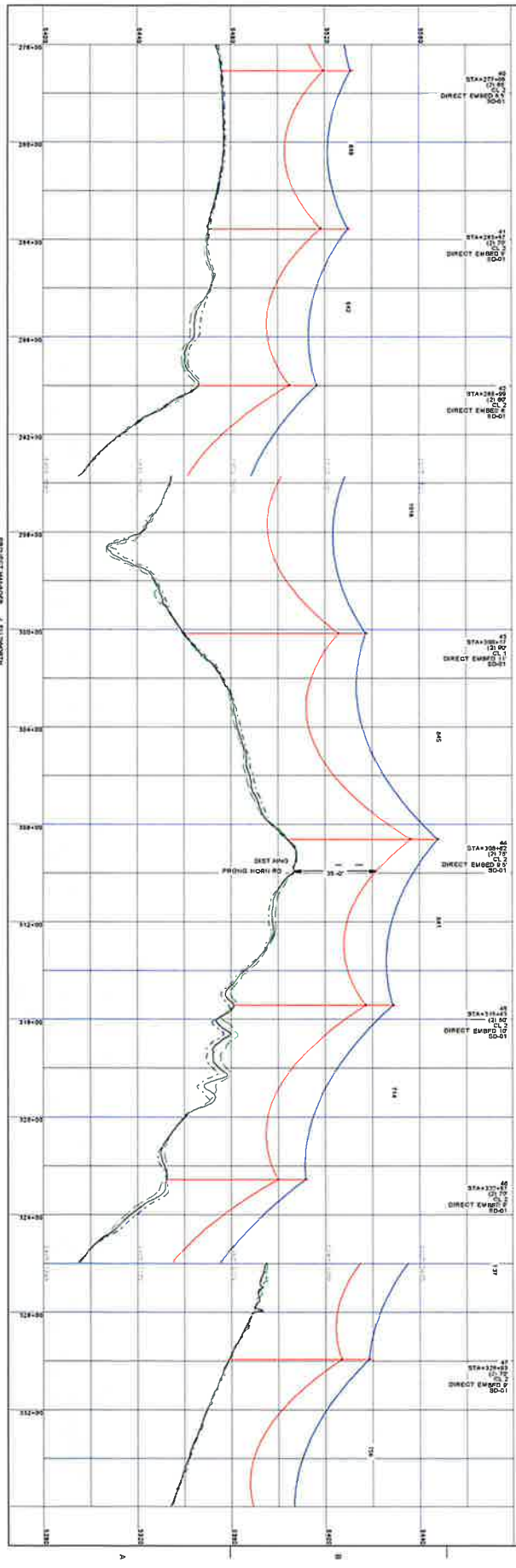
200 FT. HORIZ. SCALE

20 FT. VERT. SCALE

SHEET
 PP-5



OPGW: AFL-DNC-8189
SHIELD: 3/8" EHS 7-STRAND
CONDUCTOR: 795 KCMIL "DRAKE" ACSR 26/7



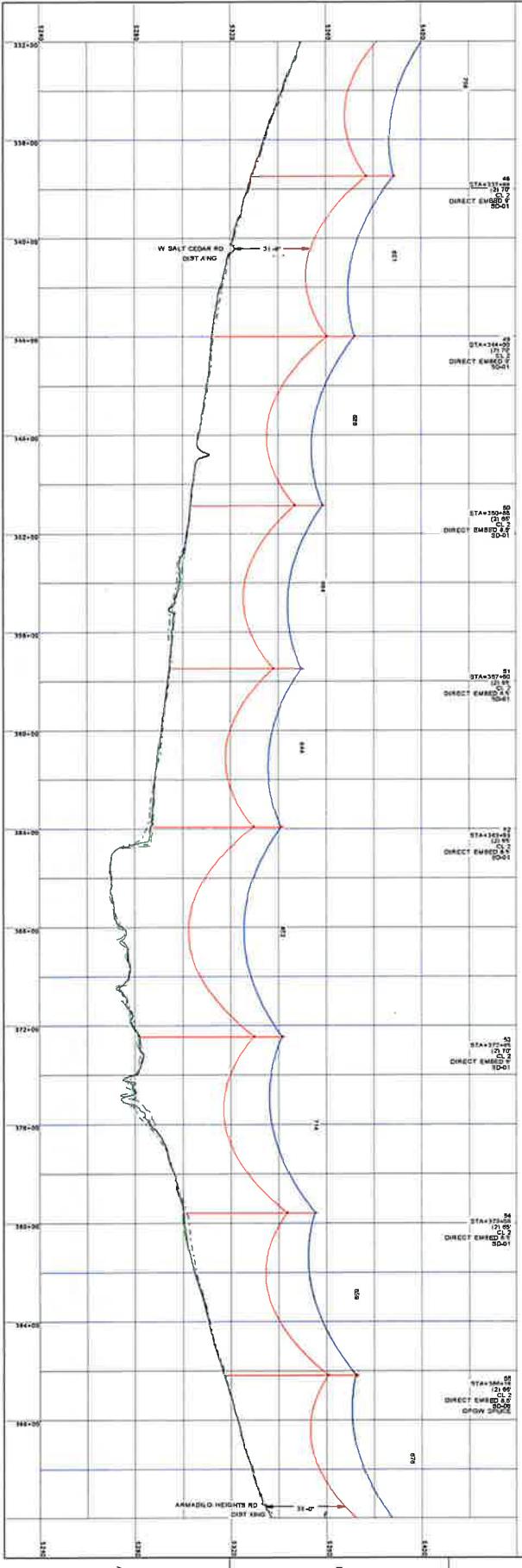
PROJECT MANAGER		J. ELLENBERG
PROJECT ENGINEER		K. JACOBSON
DESIGN ENGINEER		M. JACOBSON
CADD TECHNICIAN		M. ANDERSON
PROJECT NUMBER		1011010
DATE		10/1/2010
REVISION		
DESCRIPTION		

BLACK HILLS ENERGY
PUEBLO, COLORADO
FOUNTAIN VALLEY - MIDWAY
115KV TRANSMISSION LINE

PLAN & PROFILE
FOUNTAIN VALLEY - MIDWAY
SHEET
PP-6



OPGW: AFL-DNO-8189
 SHIELD: 3/8" EHS 7-STRAND
 CONDUCTOR: 785 KCMIL "DRAKE" ACSR 267



BLACK HILLS ENERGY		PROJECT MANAGER J. ELLINGTON	
PROJECT ENGINEER K. BUCKNER		DESIGN ENGINEER K. BUCKNER	
COORDINATOR M. BUCHHEIT		COORDINATOR M. BUCHHEIT	
ISSUE DATE		PROJECT NUMBER 171114	
ISSUE DESCRIPTION			

BLACK HILLS ENERGY
 PUEBLO, COLORADO

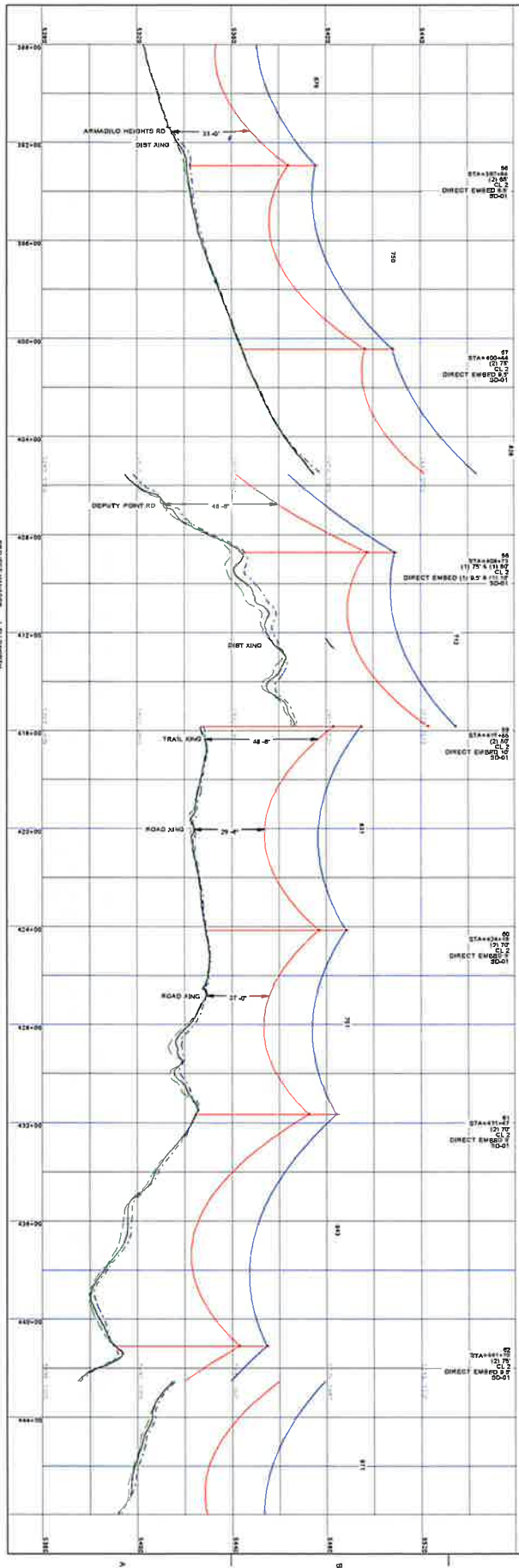
PLAN & PROFILE
 FOUNTAIN VALLEY - MIDWAY
 115KV TRANSMISSION LINE

1"=200 FT. HORIZ. SCALE
 1"=20 FT. VERT. SCALE

PP-7



OPGW: AFL-DNC-8189
SHIELD: 3/8" EHS 7-STRAND
CONDUCTOR: 795 KCMIL "DRAKE" ACSR 26/7



HJR

REVISION		PROJECT MANAGER	
NO.	DATE	DESCRIPTION	NAME
1	08/20/2018	ISSUE FOR PERMIT	J. ELIZABETH
2	09/10/2018	REVISIONS	J. ELIZABETH
3	10/10/2018	REVISIONS	J. ELIZABETH
4	11/10/2018	REVISIONS	J. ELIZABETH
5	12/10/2018	REVISIONS	J. ELIZABETH
6	01/10/2019	REVISIONS	J. ELIZABETH
7	02/10/2019	REVISIONS	J. ELIZABETH
8	03/10/2019	REVISIONS	J. ELIZABETH
9	04/10/2019	REVISIONS	J. ELIZABETH
10	05/10/2019	REVISIONS	J. ELIZABETH

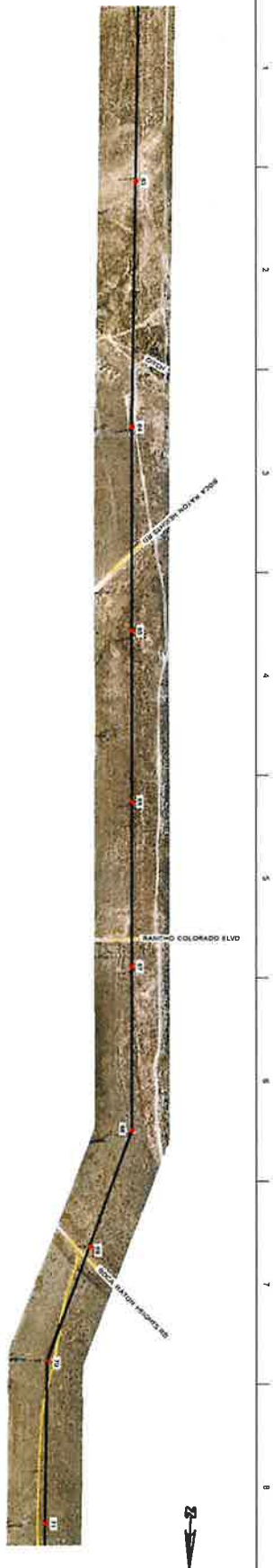
BLACK HILLS ENERGY
PUEBLO, COLORADO

PLAN & PROFILE
FOUNTAIN VALLEY - MIDWAY

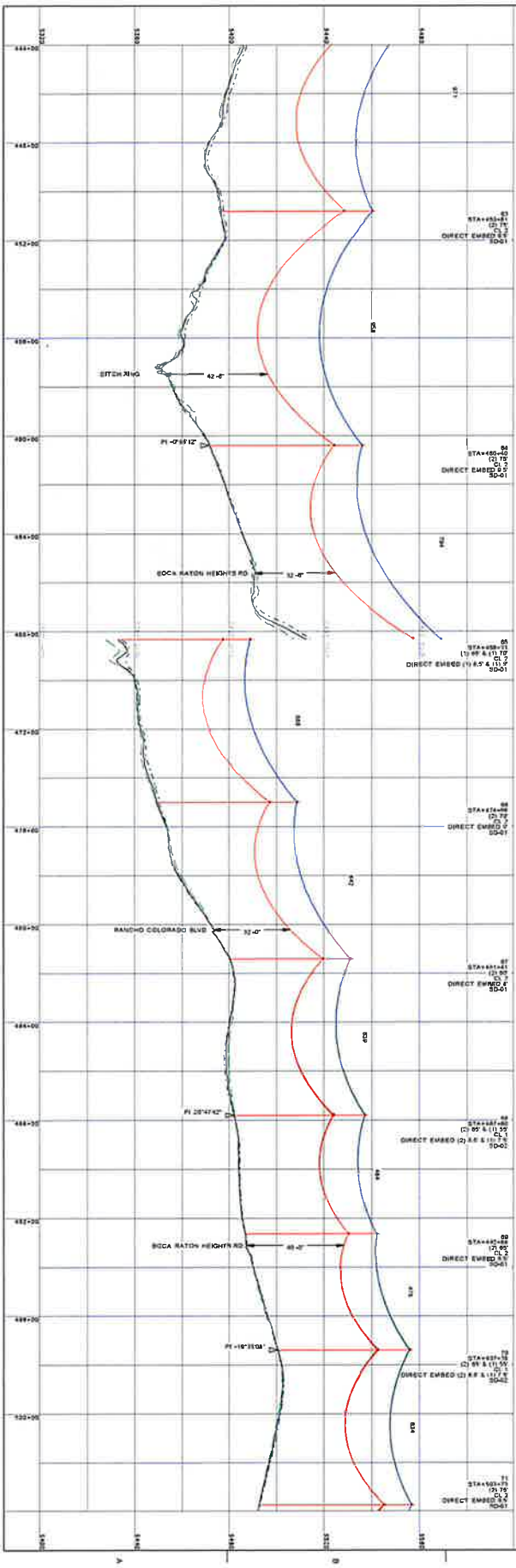
115KV TRANSMISSION LINE

200.0 FT. - HORIZ. SCALE
20.0 FT. - VERT. SCALE

SHEET
PP-8



OPGW: AFL-DNO-8189
 SHIELD: 3/8" EHS 7-STRAND
 CONDUCTOR: 795 KCMIL "DRAKE" ACSR 267



H-2

REVISION	DATE	DESCRIPTION	PROJECT NUMBER
A	05/09/19	ISSUE FOR PERMIT	971158
PROJECT MANAGER			J. TILSON
DESIGN ENGINEER			P. BAKER
CHECK ENGINEER			H. BOWMAN
DESIGNER			M. BOWMAN

BLACK HILLS ENERGY
 FOUNTAIN VALLEY - MIDWAY
 115KV TRANSMISSION LINE

PLAN & PROFILE
 FOUNTAIN VALLEY - MIDWAY

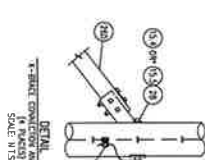
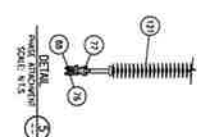
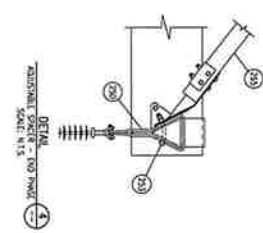
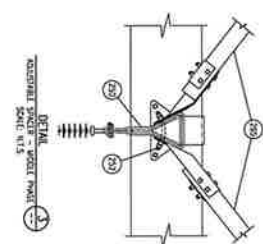
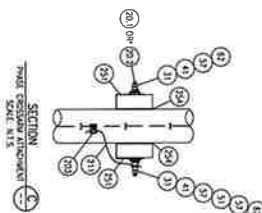
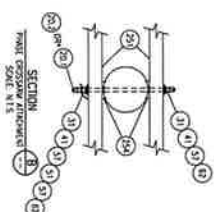
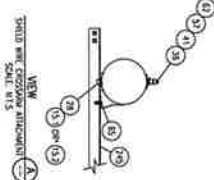
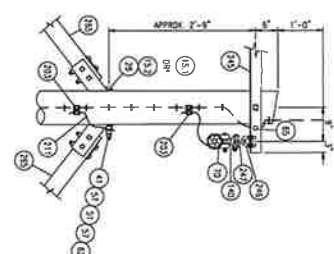
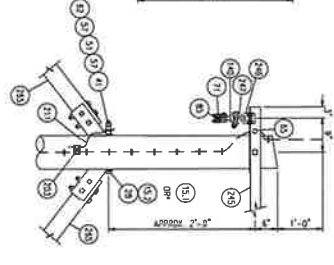
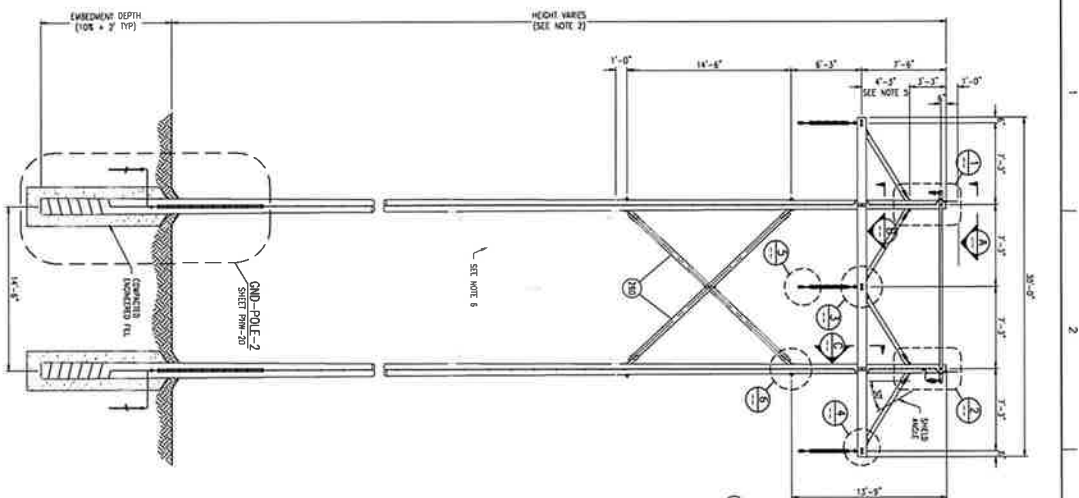
SHEET
 PP-9



PLS-CADD DRAWING



PLAN & PROFILE
FOUNTAIN VALLEY - MIDWAY

[illegible]

NOTES:

1. REFER TO THE STAKING SHEETS FOR COORDINATES OF POLES & LINE & HUB
2. SEE P&S OR STRUCTURE LIST FOR STRUCTURE HEIGHT AND EASEMENT DEPTH
3. PORTO UTILS SHALL BE 14"6" DEEPER THAN THE DEEPEST PORT UTILITY

* SEE NOTE 4
** SEE NOTE 6
*** SEE ITEM 201

4. DOWLED POLYCS SHALL BE 77% DOWLED IN THE DOWLED BACK DOWLED.
5. DOWLED LENGTHS ARE LIMITED BASED ON 80 CLASS 1 DOWLEDS PER TOLL. OVERSIZED
6. THE CONTRACTOR SHALL BE RESPONSIBLE FOR PROVIDING EXTRA QUANTITIES OF
7. DO NOT TOLERATE TO ACCOMMODATE POLY DOWLED
8. VERTICAL WE BOARD DOWLED IS AFFORDANCE TIED DOWLED NECESSARY
9. DOUBLE X-BRACES TO BE ASSEMBLED ON STRUCTURES 36 & 37. AUSTIN MATERIAL
10. QUANTITIES AS NOTED

HDX
HDX Engineering, Inc.

					PROJECT MANAGER	ELEONORA BIRNBAUM
					PRODUCT ENGINEER	BRIAN WILSON
					SOCIAL ENGINEER	MICHELLE ROBERTS
					CAD TECHNICIAN	RICHARD HARRIS
OJZ79/201+	ISSUED FROM RECORD					
DATE	DRAWING NO.				PROJECT NUMBER	282673

BLACK HILLS ENERGY
PUEBLO, COLORADO

PUEBLO PLANT - HYDE PARK - WEST STATION
115KV TRANSMISSION LINE

STRUCTURE ASSEMBLY DRAWING
115KV SINGLE CIRCUIT
TANGENT H-FRAME

FILENAME	PHW-04 DWG
SCALE	3/16"=1'-0"

PHW-04

