



INNOVATIVE DESIGN. **CLASSIC RESULTS.**

**DRAINAGE ADDENDUM FOR
FINAL DRAINAGE REPORT
FOR
HANNAH RIDGE AT FEATHERGRASS FILINGS 5,6 & 7**

October 14, 2019

Prepared for:
Elite Properties of America, Inc.
6385 Corporate Drive Suite 200
Colorado Springs, CO 80919
(719) 592-9333

Prepared by:
CLASSIC CONSULTING ENGINEERS & SURVEYORS, LLC
619 N. Cascade Avenue, Suite 200
Colorado Springs, CO 80903
(719) 785-0790

SF-18-038
SF-18-039
SF-18-040

Job no. 1116.05



**FINAL DRAINAGE REPORT ADDENDUM FOR
HANNAH RIDGE AT FEATHERGRASS FILINGS 5,6 & 7**

DRAINAGE REPORT STATEMENT

ENGINEER'S STATEMENT:

The attached drainage plan and report were prepared under my direction and supervision and are correct to the best of my knowledge and belief. Said drainage report has been prepared according to the criteria established by the El Paso County for drainage reports and said report is in conformity with the master plan of the drainage basin. I accept responsibility for any liability caused by any negligent acts, errors, or omissions on my part in preparing this report.



Kyle R Campbell, Colorado P.E. #29794

10-15-19

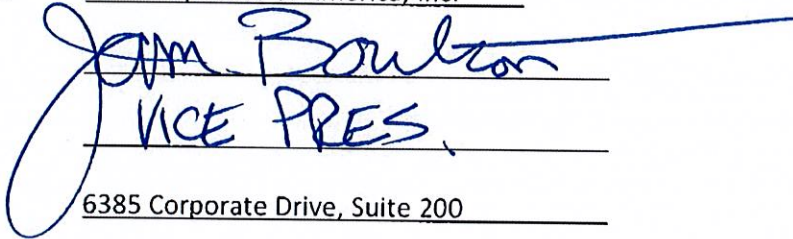
Date

DEVELOPER'S STATEMENT:

I, the developer, have read and will comply with all of the requirements specified in this drainage report and plan.

Business Name: Elite Properties of America, Inc.

By:



Title:

VICE PRES.

Address:

6385 Corporate Drive, Suite 200

Colorado Springs, CO 80919

EL PASO COUNTY ONLY:

Filed in accordance with the requirements of the Drainage Criteria Manual, Volumes 1 and 2, El Paso County Engineering Criteria Manual and Land Development Code as amended.

Jennifer Irvine, P.E.

County Engineer / ECM Administrator

Conditions:

Approved

by Elizabeth Nijkamp
El Paso County Planning and Community Development
on behalf of Jennifer Irvine, County Engineer, ECM Administrator



10/16/2019 7:24:48 AM





October 14, 2019

El Paso County Planning & Community Development
2880 International Circle, Suite 110
Colorado Springs, CO 80910

ATTN: Ms. Elizabeth Nijkamp, P.E.

RE: Drainage Addendum for Final Drainage Report for Hannah Ridge at Feathergrass Filings 5, 6 & 7 to reflect final required Drainage Fee

Dear Elizabeth:

Please consider this the Drainage Addendum for Final Drainage Report for Hannah Ridge at Feathergrass Filings 5, 6 & 7 to reflect final required Drainage Fees for Hannah Ridge at Feathergrass Filing 7. This letter is being written to accompany the Hannah Ridge at Feathergrass Filing 7 Plat which contains 81 residential lots.

This addendum letter is needed to updated drainage fees in the original report.

Please see the "Final Drainage Report for Hannah Ridge at Feathergrass Filings 5,6 & 7" by CCES approved July 15, 2019 for drainage information related to this plat area. All basins and drainage patterns from the original approved report remain the same as previously approved.

DRAINAGE AND BRIDGE FEES FILING NO. 7 (revised to reflect 2018 fees)
(Sand Creek)

FILING 7:

5000 - 6000 SF avg. lots

(Per El Paso County Percent Impervious Chart for 5000 - 6000 SF lots: 60%)

13.71 Ac. x 60% = **8.23 Impervious Ac.**

Total Impervious Acreage: 8.23 Imp. Ac.

FILING 7 FEE TOTALS:

Bridge Fees

\$ 5,210.00 x 8.23 Impervious Ac. = \$ 42,137.60

Drainage Fees

\$ 17,751.00 x 8.23 Impervious Ac. = \$ 146,090.73

PUBLIC REIMBURSABLE DRAINAGE FACILITIES
(see exhibit in back of this addendum)

1. 18" RCP	215lf	\$ 65.00	\$13,975.00
2. 36" RCP	244lf	\$ 120.00	\$29,280.00
3. 42" RCP	88lf	\$ 160.00	\$14,080.00
4. Type I MH	2ea	\$11,627.00	\$23,254.00
TOTAL			\$80,589.00

Based upon these public reimbursable facilities Drainage Fees in the amount of \$146,090.73 - \$80,589.00 = **\$65,501.73** are due with Filing 7 plat recordation (along with the full Bridge Fees noted above).

SUMMARY

The original approved "Final Drainage Report for Hannah Ridge at Feathergrass Filings 5, 6 & 7." included fee calculations that assumed full offset Drainage Fees could be used between the 3 approved plats, therefore prompting this addendum. As Filing No. 7 is being platted without Filing 5 or 6, the fees due at plat recordation have be revised.

No changes to the previously approved drainage patterns or storm system are proposed.

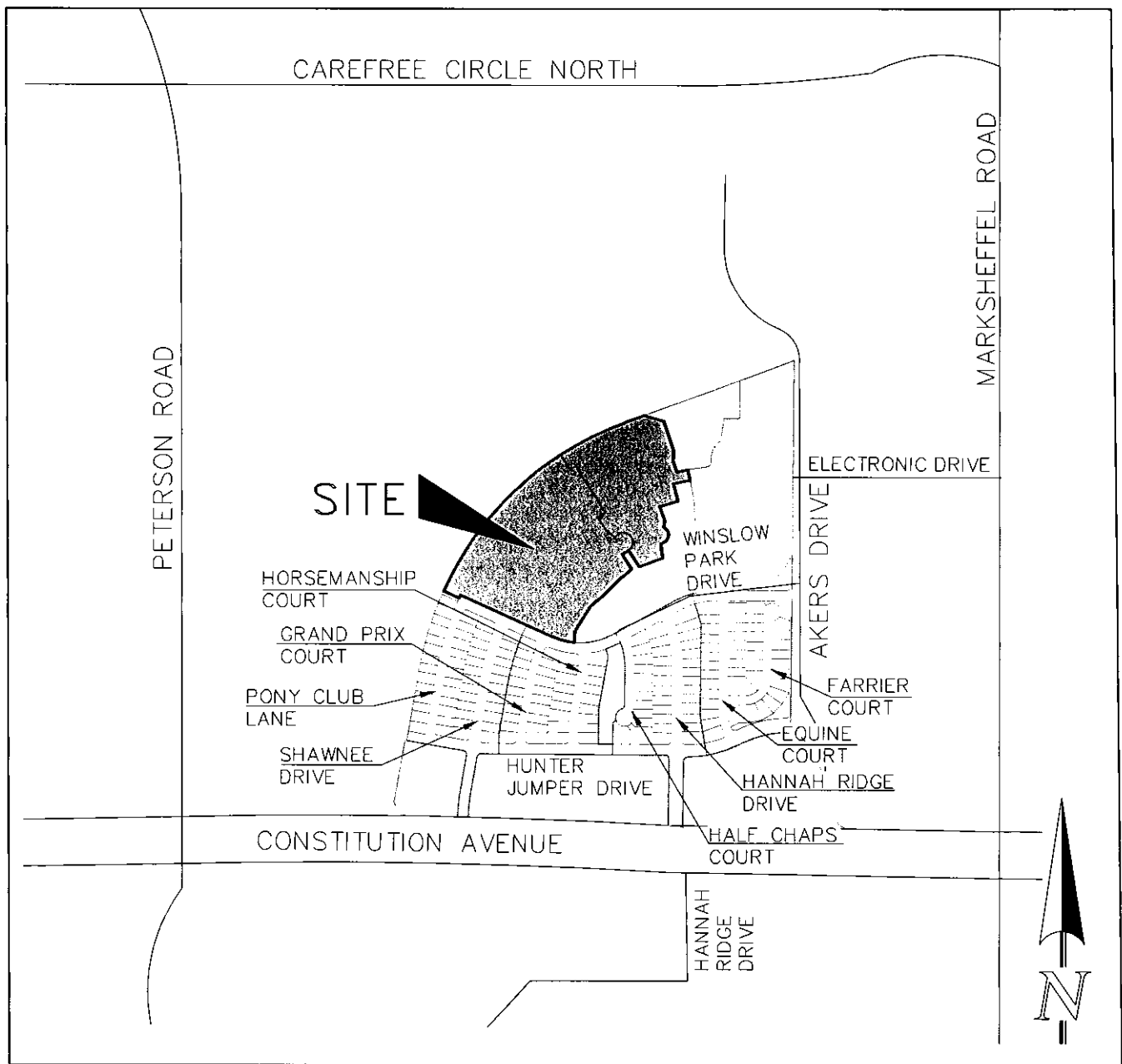
If you have any questions or comments regarding this drainage addendum, please do not hesitate to contact me.

Sincerely,



Kyle R. Campbell, P.E.
Division Manager

VICINITY MAP



VICINITY MAP

N.T.S.

PROPOSED FINAL PLAT (FILING NO. 7)

HANNAH RIDGE AT FEATHERGRASS FILING NO. 7A REPLAT OF TRACT KK AND TRACT LL OF HANNAH RIDGE AT FEATHERGRASS FILING NO. 1, RECEPTION NO. 214713468, RECORDS OF EL PASO COUNTY, COLORADO SECTION 32, TOWNSHIP 13 SOUTH, RANGE 65 WEST OF THE SIXTH PRINCIPAL MERIDIAN, EL PASO COUNTY, COLORADO

AS PLATTED

$\Delta=4520.40'$
 $R=600.00'$
 $L=243.54'$

$\Delta=100.00'$
 $R=100.00'$
 $L=100.00'$

$\Delta=0370.3'$
 $R=1710.00'$
 $L=18.43'$

HANNAH RIDGE AT FEATHERGRASS
 FILING NO. 7
 RECEPTION NO. 214713468

WINDLER PARK COLE
 100' ROW

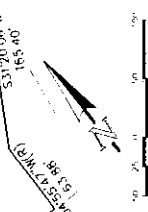
$N65^{\circ}51'43''W$
 $574.95'$

$\Delta=7912.50'$
 $R=370.00'$
 $L=124.04'$

HANNAH RIDGE AT FEATHERGRASS
 FILING NO. 7
 RECEPTION NO. 214713468

14 (11)

SEE PLAT NO. 214713468



100' ROW

HANNAH RIDGE AT FEATHERGRASS
 FILING NO. 7
 RECEPTION NO. 214713468

$\Delta=159.86'$
 $R=150.00'$
 $L=40.00'$

$\Delta=100.00'$
 $R=100.00'$
 $L=100.00'$

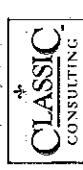
$\Delta=100.00'$
 $R=100.00'$
 $L=100.00'$

$\Delta=100.00'$
 $R=100.00'$
 $L=100.00'$

$\Delta=100.00'$
 $R=100.00'$
 $L=100.00'$

$\Delta=100.00'$
 $R=100.00'$
 $L=100.00'$

$\Delta=100.00'$
 $R=100.00'$
 $L=100.00'$

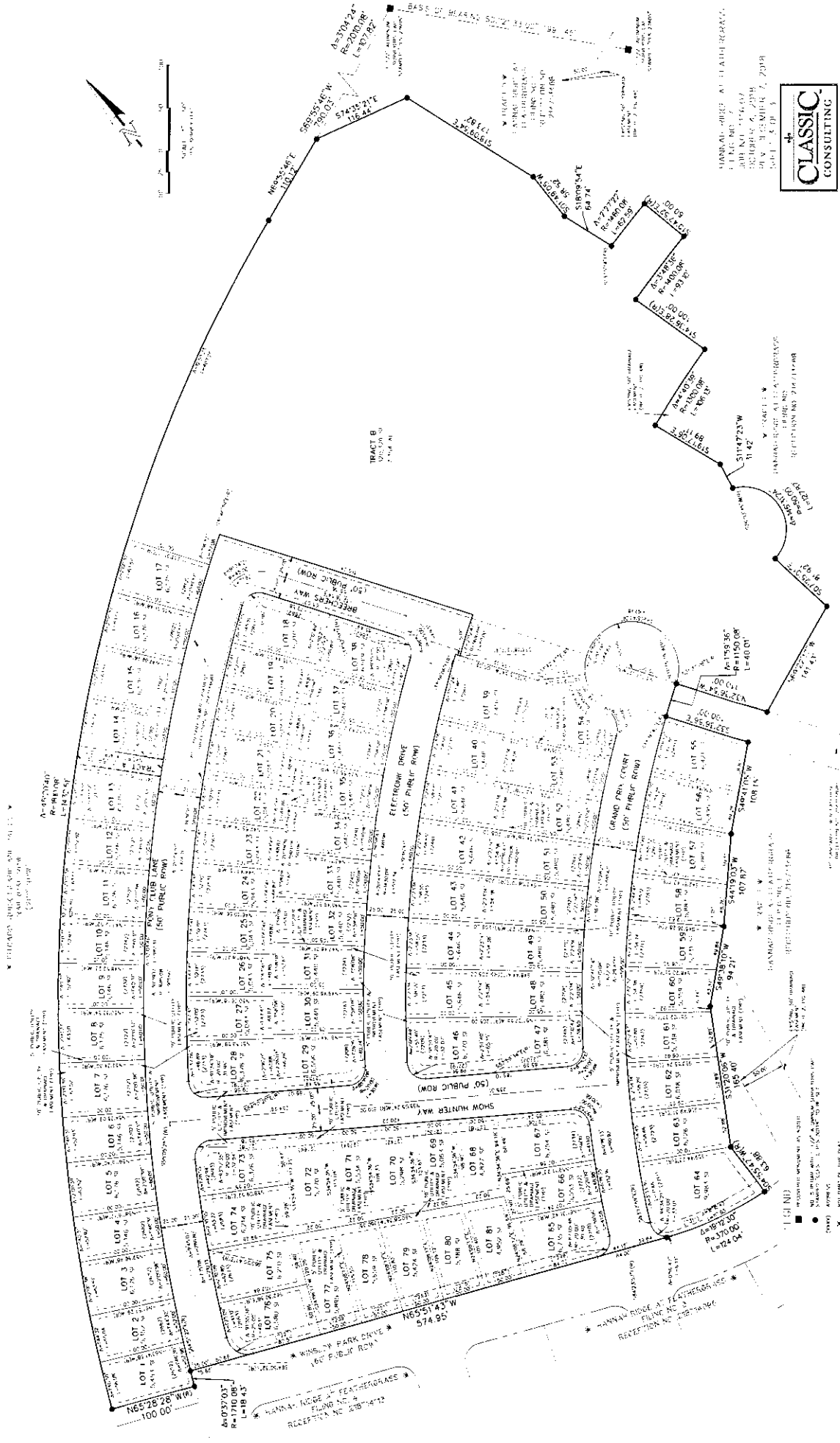


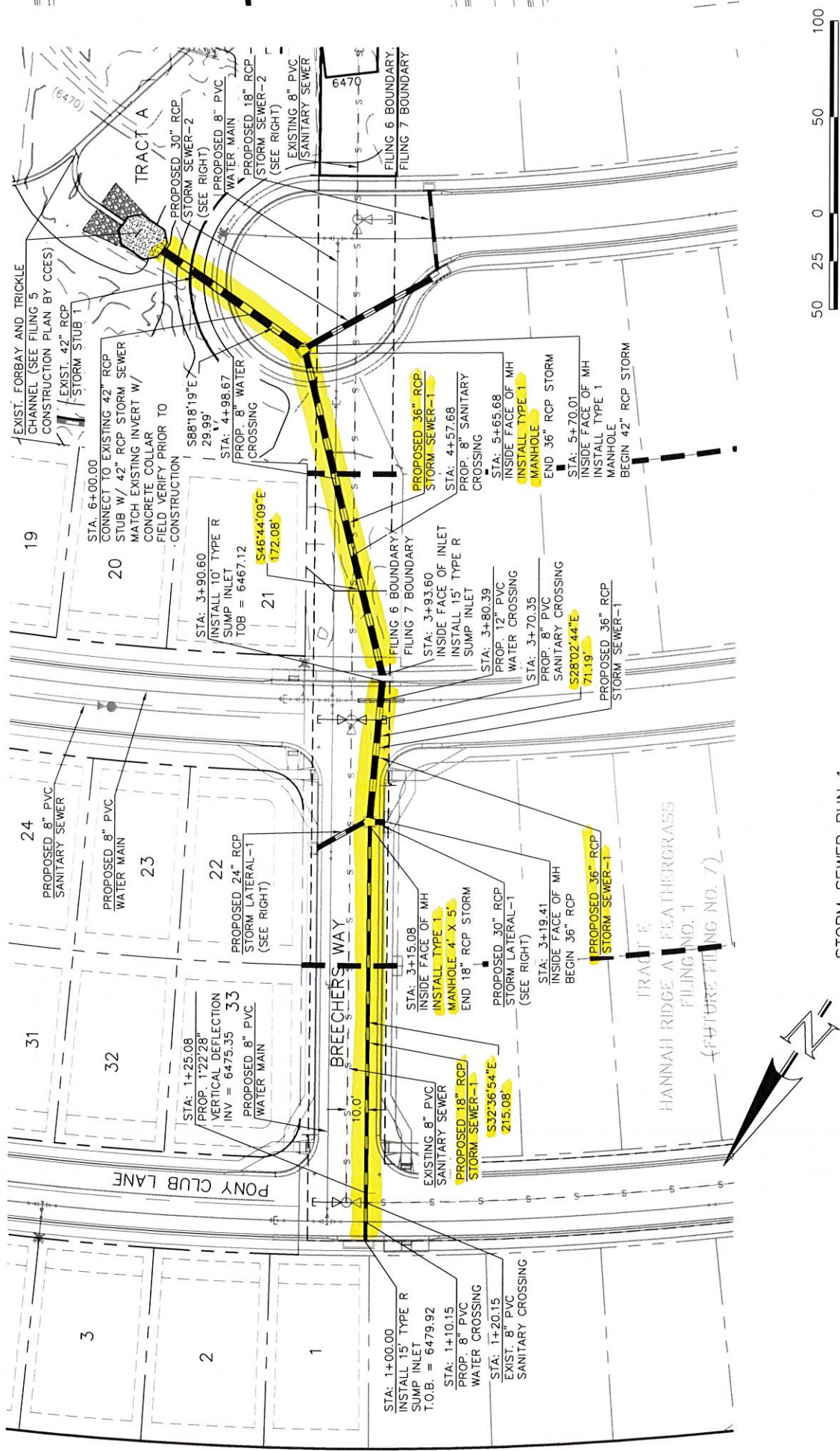
CLASSIC CONSULTING
 10000 ALAMO DRIVE, SUITE 200
 EL PASO, TEXAS 79904
 (915) 766-1111
 WWW.CLASSICCONSULTING.COM

HANNAH RIDGE AT FEATHERGRASS FILING NO. 7

A REPEAT OF TRACT KK AND LL OF HANNAH RIDGE AT FEATHERGRASS FILING NO. 1, RECEPTION NO. 214713433, RECORDS OF EL PASO COUNTY, COLORADO SECTION 32, TOWNSHIP 13 SOUTH, RANGE 65 WEST OF THE SIXTH PRINCIPAL MERIDIAN, EL PASO COUNTY, COLORADO

AS REPLATTED





STORM SEWER RUN 1

SCALE: 1" = 50' HORIZ.
SCALE: 1" = 5' VERT.

