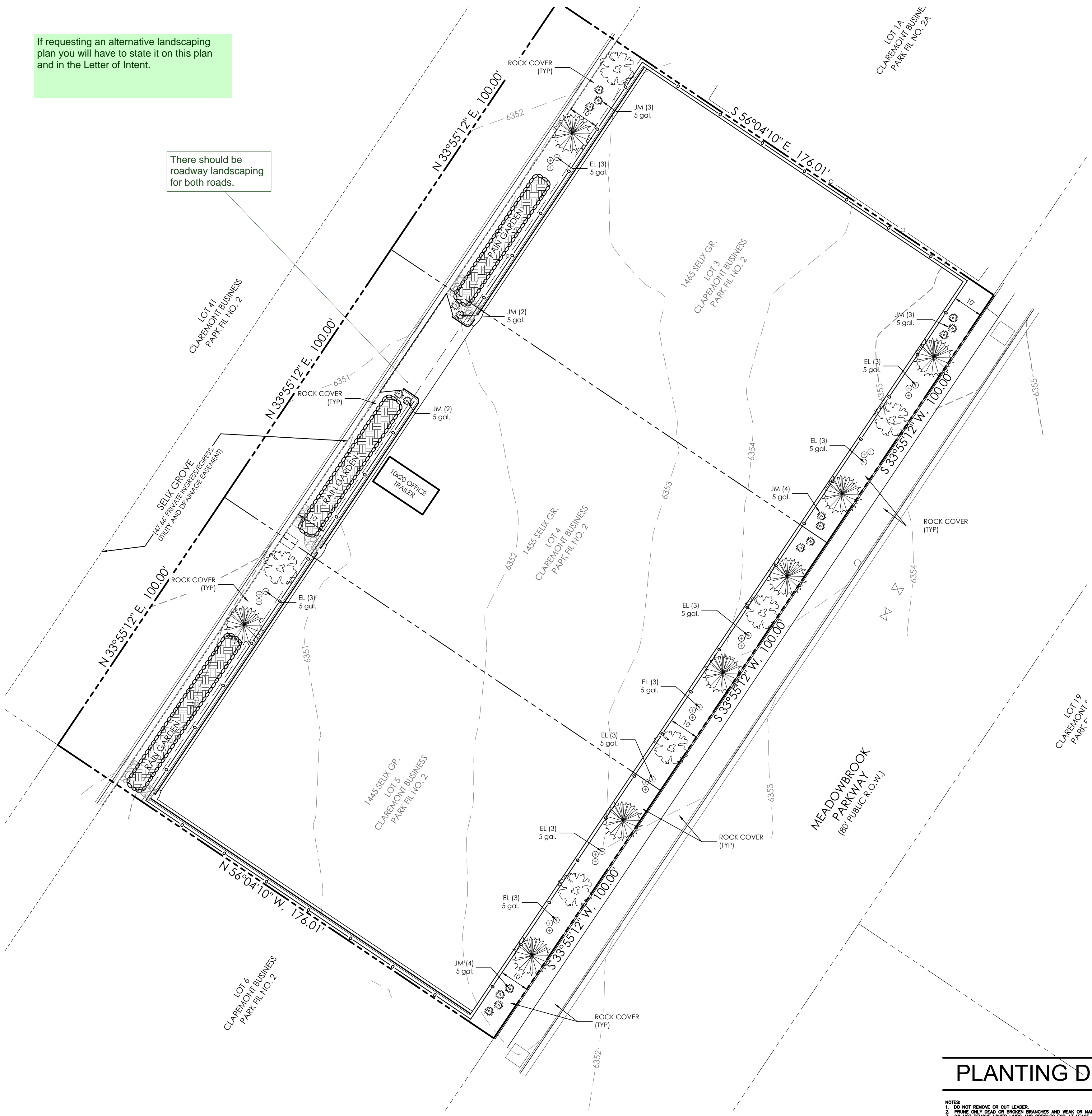


If requesting an alternative landscaping plan you will have to state it on this plan and in the Letter of Intent.

There should be roadway landscaping for both roads.



#### LEGEND:

- PROPOSED DECIDUOUS TREE (NATIVE PLUM)
- PROPOSED CONIFEROUS TREE (PINON PINE)
- PROPOSED DECIDUOUS SHRUB
- PROPOSED CONIFEROUS SHRUB
- NATIVE SEED MIX FOR RAIN GARDENS (SEE TABLE B-3)

#### COVERAGE DATA

PAVEMENT (PRIVATE STREET)	7,140 SF	( 13.5%)
PAVEMENT (STORAGE)	38,704 SF	( 73.3%)
LANDSCAPING	6,959 SF	( 13.2%)
TOTAL AREA	52,803 SF	(100.0%)

= 1.21± ACRES

#### INTERNAL LANDSCAPING

TOTAL AREA	52,803 SF
INTERNAL LANDSCAPING REQUIRED	2,640 SF ( 5.0%)
LANDSCAPING PROVIDED	6,959 SF ( 13.2%)

TREES REQUIRED 1/500SF	5 EA
TREES PROVIDED	4 EA + 12 SHRUBS

#### ROADWAY LANDSCAPING

TOTAL FRONTAGE	300 LF
REQUIRED TREES: 1/30 FT	10 EA
PROVIDED TREES	10 EA

#### NOTES

HAND WATER OF ALL TREES/SHRUBS BY OWNER.

Table B-3. Native seed mix for rain gardens

Common Name	Scientific Name	Variety	PLS <sup>2</sup> lbs per Acre	Ounces per Acre
Sand bluestem	Andropogon hallii	Garden	3.5	
Sideoats grama	Bouteloua curtipendula	Butte	3	
Prairie sandreed	Calamovilfa longifolia	Goshen	3	
Indian ricegrass	Oryzopsis hymenoides	Paloma	3	
Switchgrass	Panicum virgatum	Blackwell	4	
Western wheatgrass	Pascopyrum smithii	Ariba	3	
Little bluestem	Schizachyrium scoparium	Patura	3	
Alkali sacaton	Sporobolus airoides		3	
Sand dropseed	Sporobolus cryptandrus		3	
Pasture sage <sup>1</sup>	Artemisia frigida			2
Blue aster <sup>1</sup>	Aster laevis			4
Blanket flower <sup>1</sup>	Gaillardia aristata			8
Prairie coneflower <sup>1</sup>	Ratibida columnifera			4
Purple prairieclover <sup>1</sup>	Dalea (Petalostemum) purpurea			4
Sub-Totals:			27.5	22
Total lbs per acre:				28.9

<sup>1</sup> Wildflower seed (optional) for a more diverse and natural look.

<sup>2</sup> PLS = Pure Live Seed.

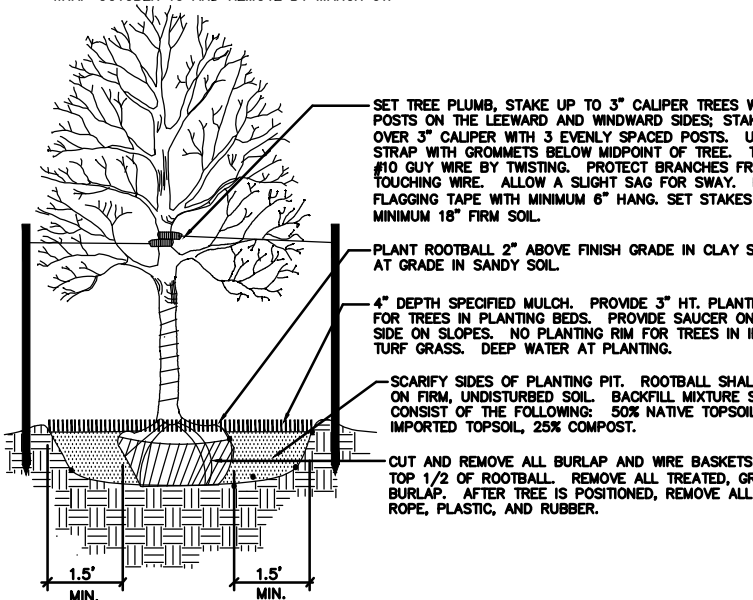
CLIMATE ZONE: PLAINS  
PLANT COMMUNITIES: PRAIRIE/SEMIARID SHRUBLANDS

#### PLANT SCHEDULE

ABBREV.	QTY.	BOTANICAL NAME	COMMON NAME	APP. B KEY	MATURE WIDTH	PLANTING SIZE
TREES						
PLUM	6	Prunus americana	Plum: Native	234567DA	10'	1-1/2" cal.
PINE	8	Pinus edulis	Pinon: Pine	1256D	12'	1-1/2" cal.
SHRUBS						
JM	18	Juniperus x media and cvs.	Juniper: Pfitzer, Old Gold	DA	Varies	5 gal.
EL	27	Eurotia lanata	Winterfat	1235D	1-2'	5 gal.

#### PLANTING DETAILS

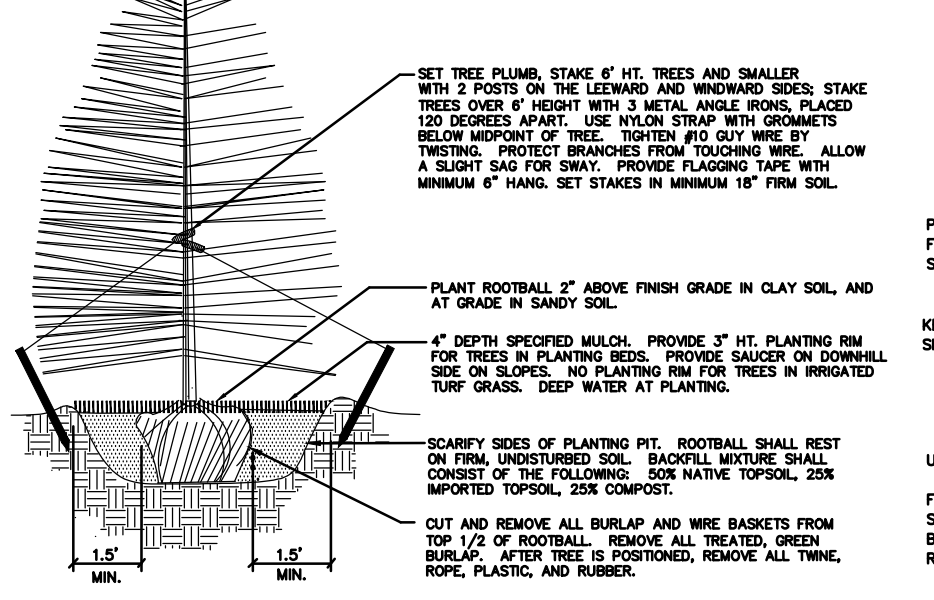
- DO NOT REMOVE OR CUT LEADER.
- PRUNE ONLY DEAD OR BROKEN BRANCHES AND WEAK OR NARROW CROTCHES.
- DO NOT REMOVE LOWER LIMBS AND SPROUTS FOR AT LEAST TWO GROWING SEASONS.
- KEEP PLANTS MOIST AND SHADED UNTIL PLANTED.
- DO NOT FERTILIZE FOR AT LEAST ONE GROWING SEASON.
- WRAP TRUNK ON EXPOSED SITES OR SPECIES WITH TRUNK BARK. USE ELECTRICAL TAPE NOT TWINE. WRAP OCTOBER 15 AND REMOVE BY MARCH 31.



1 Deciduous Tree Planting Detail

SCALE: NOT TO SCALE

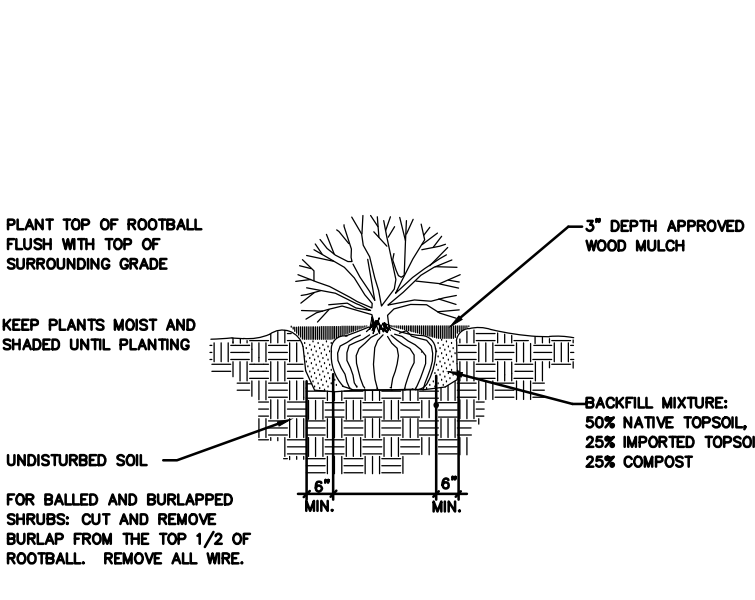
- DO NOT REMOVE OR CUT LEADER.
- PRUNE ONLY DEAD OR BROKEN BRANCHES AND WEAK OR NARROW CROTCHES.
- REMOVE ANY DOUBLE LEADER, UNLESS OTHERWISE DIRECTED BY OWNER REPRESENTATIVE.
- KEEP PLANTS MOIST AND SHADED UNTIL PLANTED.
- AVOID FALL PLANTING IF POSSIBLE.



2 Coniferous Tree Planting Detail

SCALE: NOT TO SCALE

- DO NOT REMOVE OR CUT LEADER.
- PRUNE ONLY DEAD OR BROKEN BRANCHES AND WEAK OR NARROW CROTCHES.
- REMOVE ANY DOUBLE LEADER, UNLESS OTHERWISE DIRECTED BY OWNER REPRESENTATIVE.
- KEEP PLANTS MOIST AND SHADED UNTIL PLANTED.
- AVOID FALL PLANTING IF POSSIBLE.

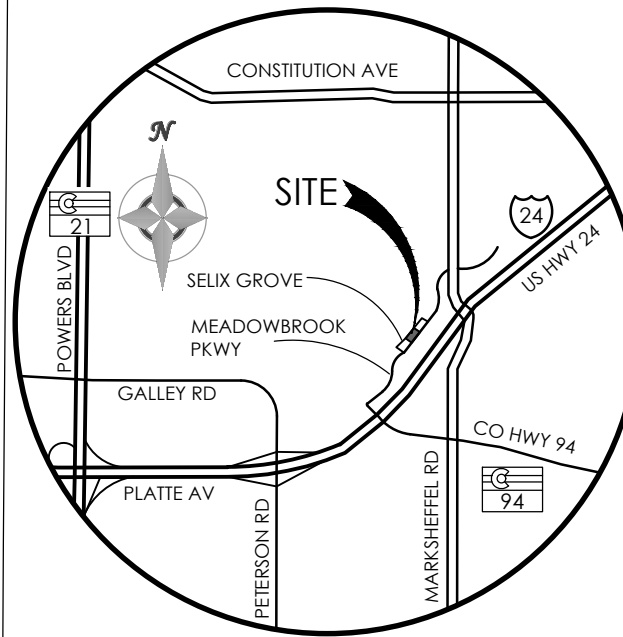


3 Shrub Planting Detail

SCALE: NOT TO SCALE

#### GENERAL LANDSCAPE NOTES

- ALL PARKING LOT PLANTING ISLANDS SHALL BE EXCAVATED TO A 30" DEPTH AND FILLED WITH IMPORTED TOPSOIL.
- ALL AREAS LABELED "TURF" ARE TO BE KENTUCKY BLUEGRASS SOD.
- ALL AREAS LABELED "MAINTAINED GRASS" ARE TO RECEIVE ARKANSAS VALLEY SEED CO. "NATURE'S CHOICE MIX" (70% FAIRWAY CRESTED WHEATGRASS, 15% HARD FESCUE, 10% VANTAGE PERENNIAL RYEGRASS, 5% KENTUCKY BLUEGRASS). SEEDING RATE IS TO BE 4 LBS. PER 1000 S.F. TO BE APPLIED BY A TWO-STEP HYDRO-MULCH PROCEDURE.
- ALL AREAS LABELED "NATIVE PRAIRIE GRASSES" ARE TO RECEIVE A CDOT "PLAINS" MIX AS PER CDOT STANDARDS. 16 LBS. PER ACRE TO BE APPLIED PER CDOT STANDARDS.
- ALL PLANTING BEDS LABELED "WOOD MULCH" ARE TO RECEIVE 3" DEPTH "CASCADE CEDAR" SHREDDED WOOD MULCH.
- ALL PLANTING BEDS LABELED "ROCK COVER" ARE TO RECEIVE 1-1/2" "RIVER ROCK" 3" DEPTH OVER LANDSCAPE FABRIC.
- EXISTING SOIL IN ALL SOD, MAINTAINED GRASS, AND PLANTING BED AREAS IS TO BE AMENDED WITH 3 CU. YDS./ 1000 S.F. OF TRI-MIX II (C & C SAND) TILLED INTO TOP 4" OF SOIL.
- SOD AREAS ARE TO BE SPRAY IRRIGATED. MAINTAINED GRASS TO BE SPRAY IRRIGATED SEPARATELY FROM SOD. ALL SHRUBS AND PERENNIALS TO BE DRIP IRRIGATED.
- ALL TREES TO HAVE 3 LBS. NITROGEN PER 1000 SQ. FT. ADDED. USE THE DRIP LINE OF TREES TO CALCULATE THE SQ. FT. TREES SHALL ALSO RECEIVE 4 LBS. OF PHOSPHOROUS, PER 1000 SQ. FT. AND 1 LBS. OF POTASSIUM PER 1000 SQ. FT.
- ALL SEEDING AND SOD AREAS TO HAVE 1 LB. NITROGEN, 4 LBS. PHOSPHOROUS, AND 1 LBS. POTASSIUM PER 1000 SQ. FT. ADDED 2 TO 3 WEEKS AFTER SEEDLING EMERGENCE. ALSO ADD 1 LB. NITROGEN PER 1000 SQ. FT. IN MID TO LATE JUNE AND IN EARLY TO MID AUGUST.
- EXISTING TOPSOIL IS TO BE STOCKPILED ON SITE AND USED TO ESTABLISH FINAL GRADES IN LANDSCAPE AREAS.
- STEEL EDGING TO BE 12 GAUGE DARK GREEN COATED EDGING. EDGING IS TO BE SECURELY STAKED AND TOP OF EDGING IS TO BE 1/2" TO 1" ABOVE SURROUNDING GRADE. EDGING IS ALSO TO HAVE RUBBER EDGING CAP ADJACENT TO ALL TURF AREAS.
- PROPOSED SLOPES ARE NOT TO BE GREATER THAN 4:1 IN LANDSCAPE AREAS.
- EXISTING TREES TO BE RETAINED AND INCORPORATED INTO SITE LANDSCAPING ARE LABELED "EXIST" ON THE PLAN. NONE OF THESE TREES ARE IN ACTIVE CONSTRUCTION AREAS AND THEREFORE REQUIRE NO PROTECTION MEASURES. TREES TO BE RETAINED WILL BE MARKED WITH FLAGGING AND LABELED "SAVE".

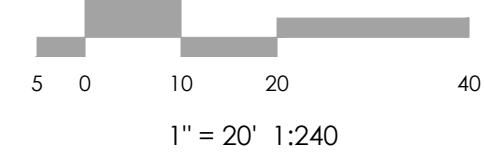
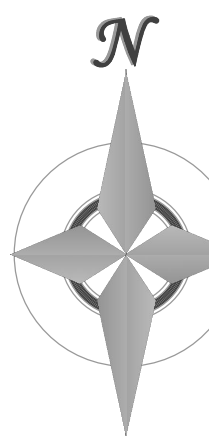


#### VICINITY MAP

NOT TO SCALE

BENCHMARK  
ELEVATIONS SHOWN ON THIS DRAWING ARE  
BASED ON THE CSU FIMS NETWORK (NGVD29).

BASIS OF BEARINGS: THE BASIS OF ALL BEARINGS  
SHOWN ON THIS DRAWING IS THE NORTH LINE  
OF MEADOWBROOK PARKWAY BEARING  
S33°55'12"W.



REVISIONS

DESIGNED BY  
DRAWN BY  
CHECKED BY  
AS-BUILT BY  
CHECKED BY

GULFEAGLE  
SUPPLY

LANDSCAPE  
PLAN

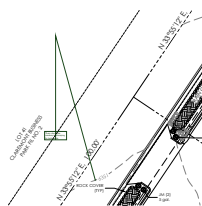
MVE PROJECT 61078  
MVE DRAWING -DEV-LP

MAY 28, 2019  
SHEET 1 OF 1



# Landscape\_v2-redline.pdf Markup Summary

Unlocked (2)



**Subject:** Callout  
**Page Label:** [1] DEV-LP  
**Lock:** Unlocked  
**Author:** dsdkendall  
**Date:** 6/18/2019 3:46:18 PM  
**Status:**  
**Color:**    
**Layer:**  
**Space:**

There should be roadway landscaping for both roads.

If requesting an alternative landscaping plan you will have to state it on this plan and in the Letter of Intent.

**Subject:** Text Box  
**Page Label:** [1] DEV-LP  
**Lock:** Unlocked  
**Author:** dsdkendall  
**Date:** 6/18/2019 3:46:56 PM  
**Status:**  
**Color:**    
**Layer:**  
**Space:**

If requesting an alternative landscaping plan you will have to state it on this plan and in the Letter of Intent.