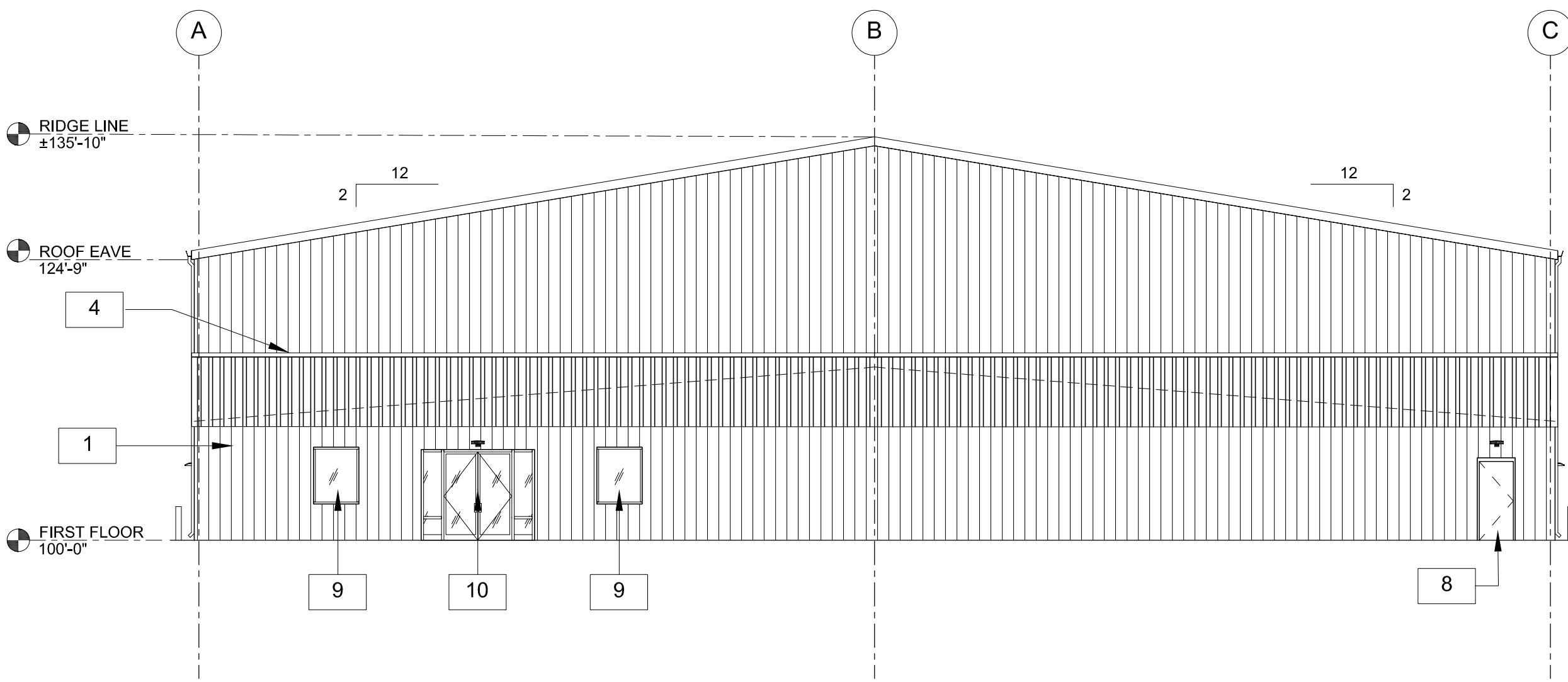
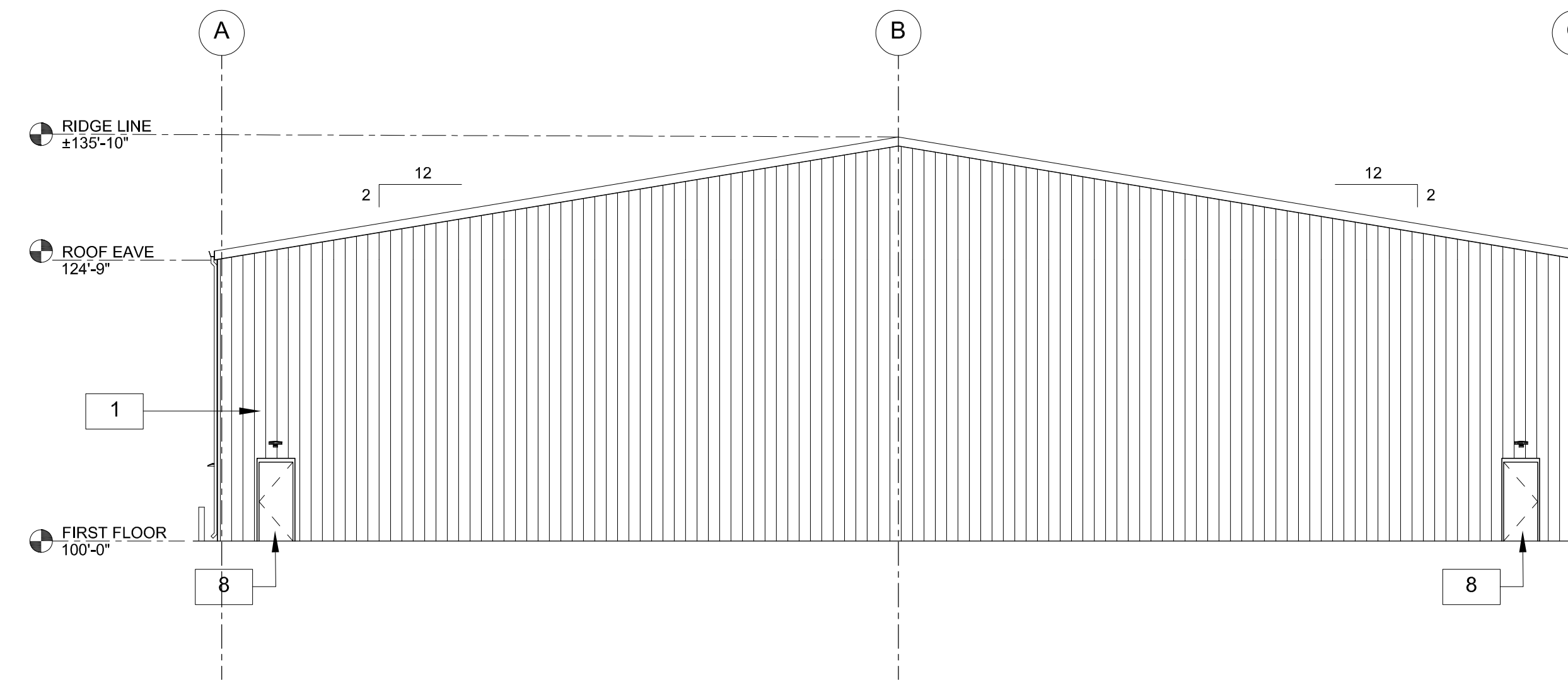


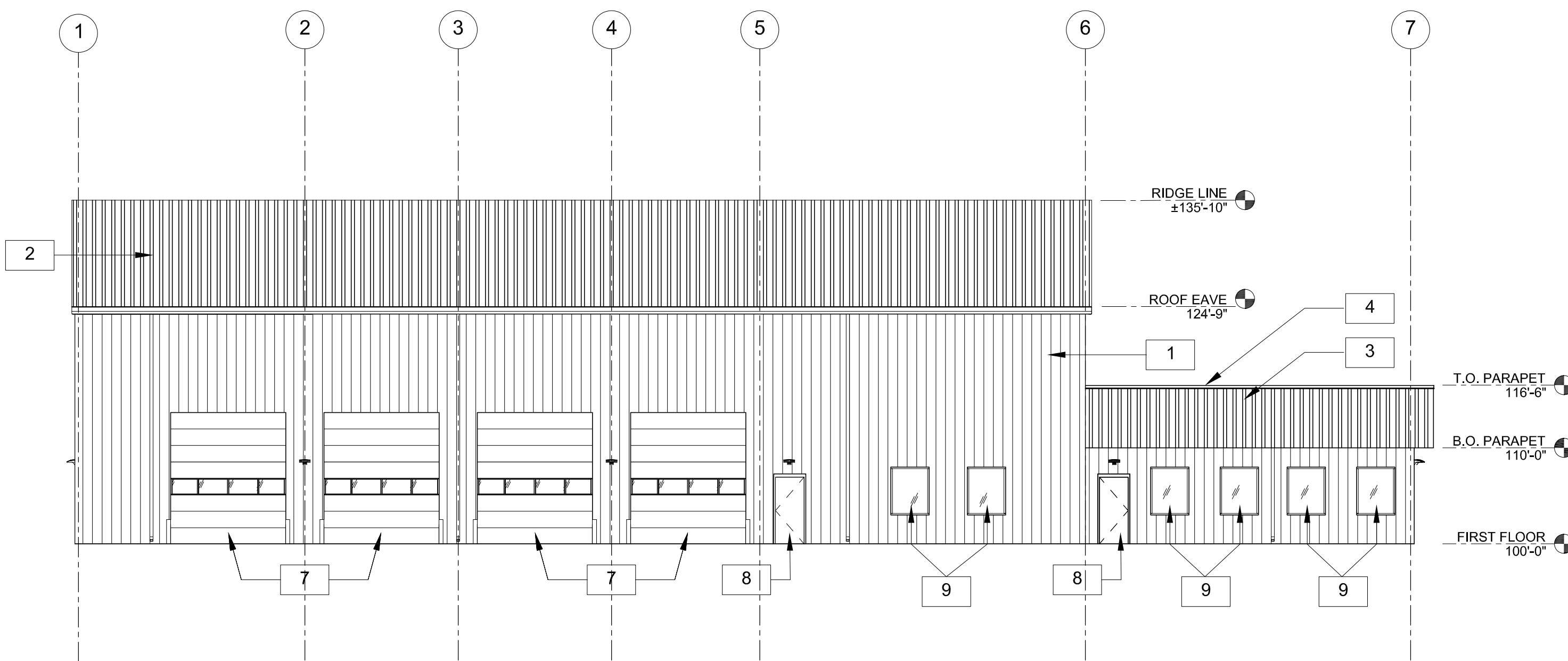
- KEY NOTES:**
- 1 PRE-FINISHED METAL WALL PANEL
  - 2 PRE-FINISHED STANDING SEAM METAL ROOF PANEL
  - 3 PRE-FINISHED METAL PANEL ROOF PARAPET
  - 4 PRE-FINISHED METAL PARAPET CAP
  - 5 PRE-FINISHED METAL ROOF FLASHING AND GUTTERS
  - 6 PRE-FINISHED METAL OPEN FACED DOWNSPOUT
  - 7 12x14' HIGH LIFT ROLL-UP DOOR WITH GLASS PANEL
  - 8 HOLLOW METAL SWING DOOR, PROVIDED BY METAL BUILDING COMPANY
  - 9 STOREFRONT WINDOW SYSTEM
  - 10 STOREFRONT ENTRANCE DOOR SYSTEM
  - 11 WALL MOUNTED SECURITY LIGHT FIXTURE
  - 12 CONCRETE FILLED PIPE BOLLARD, PAINT.



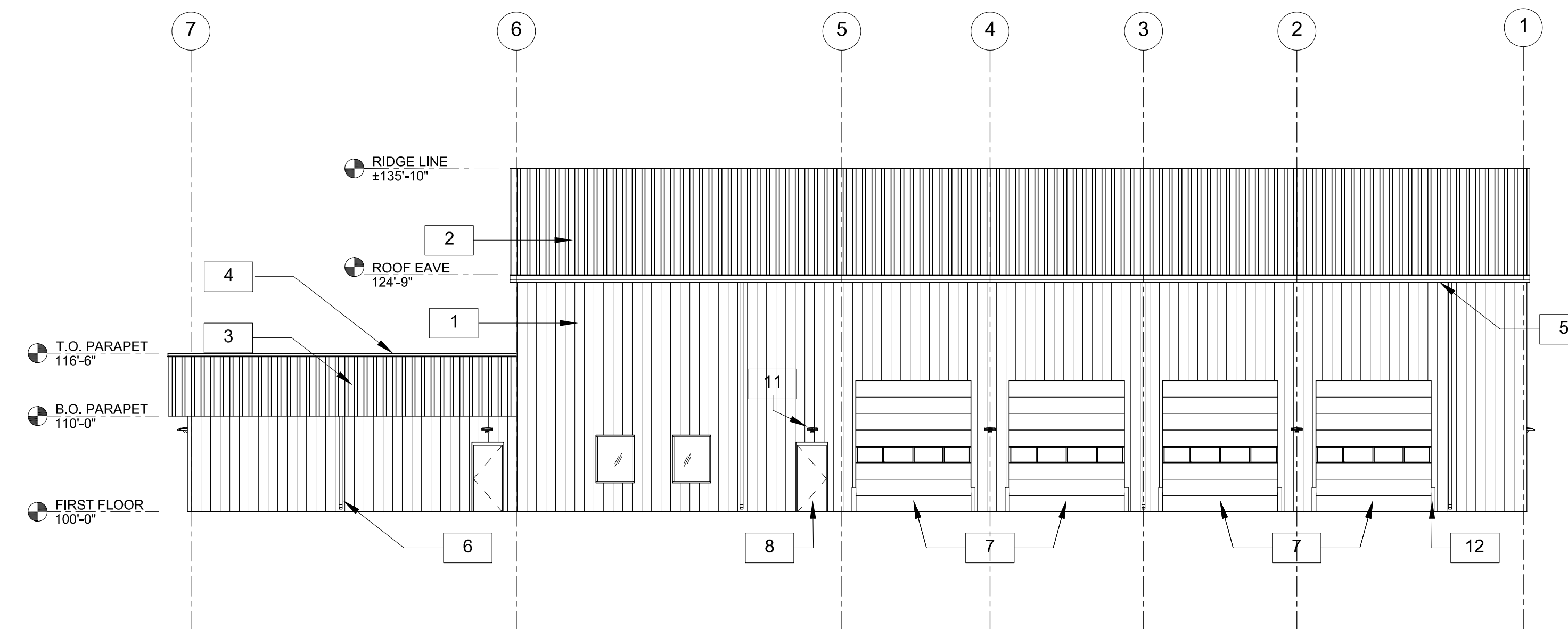
**1 FRONT(SOUTH) ELEVATION**  
 DP-4 3/32" = 1'-0"



**4 REAR (NORTH) ELEVATION**  
 DP-4 3/32" = 1'-0"



**2 SIDE (WEST) ELEVATION**  
 DP-4 3/32" = 1'-0"



**3 SIDE(EAST) ELEVATION**  
 DP-4 3/32" = 1'-0"



**Design Development Consultants @**  
 1310 FORD STREET  
 COLORADO SPRINGS, CO 80915  
 (719) 570-1456

Revisions	DATE
#	DESCRIPTION

**CITY LINK TRUCKING**  
 225 N. CURTIS ROAD  
 COLORADO SPRINGS, CO  
 CD'S  
 D2-1109

DATE	05-18-2022
CHECKED	-
DRAWN BY	-

ELEVATIONS  
**DP-4**

(C) ALL RIGHTS RESERVED