

THE GARDENS AT NORTH CAREFREE
POND ASBUILTS
FIELD DATA COLLECTED 11-06-2020, 11-11-2020 AND 1-7-2022

ENGINEERING STATEMENT

THE DETENTION POND SHOWN ON THIS EXHIBIT, CONSTRUCTED AS PART OF THE GARDENS AT NORTH CAREFREE HAS BEEN CONSTRUCTED TO MEET OR EXCEED ITS RESPECTIVE DESIGN PARAMETERS. CHARLES K. COTHERN, P.E., COLORADO COLORADO REGISTRATION NO. 24997

SIGNATURE: _____ DATE: _____
PRINTED NAME: CHARLES K. COTHERN P.E.

AS-BUILT POND PROPERTIES

AS-BUILT POND VOLUME = 58632.903 CF = 1.346 Ac.Ft.
DESIGN POND VOLUME = 53,056 CF = 1.216 Ac.Ft.

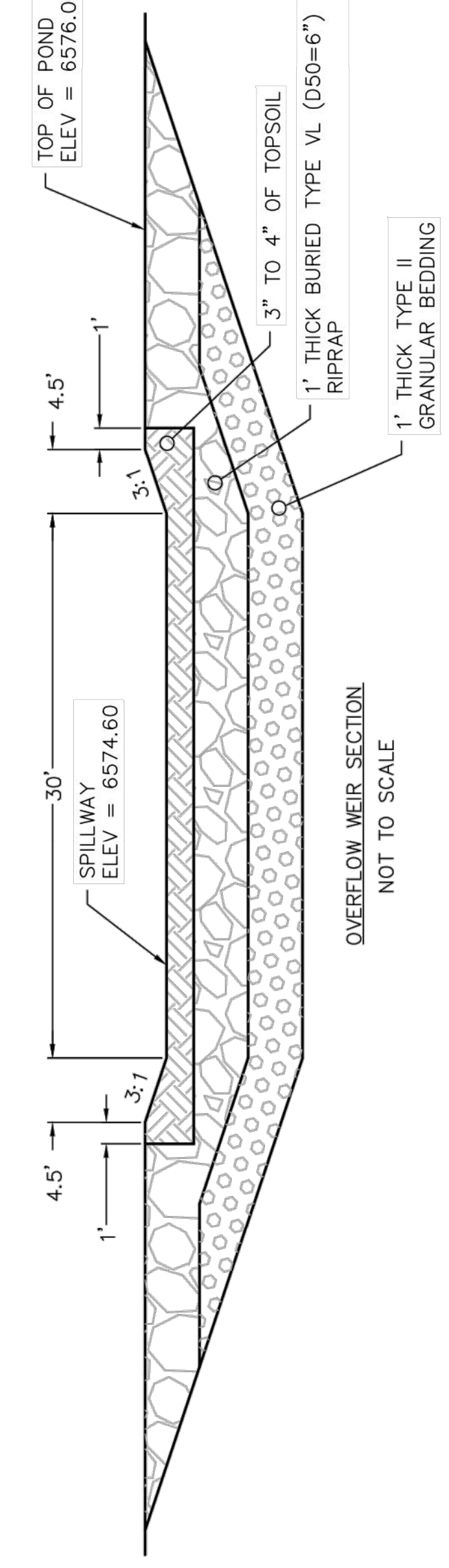
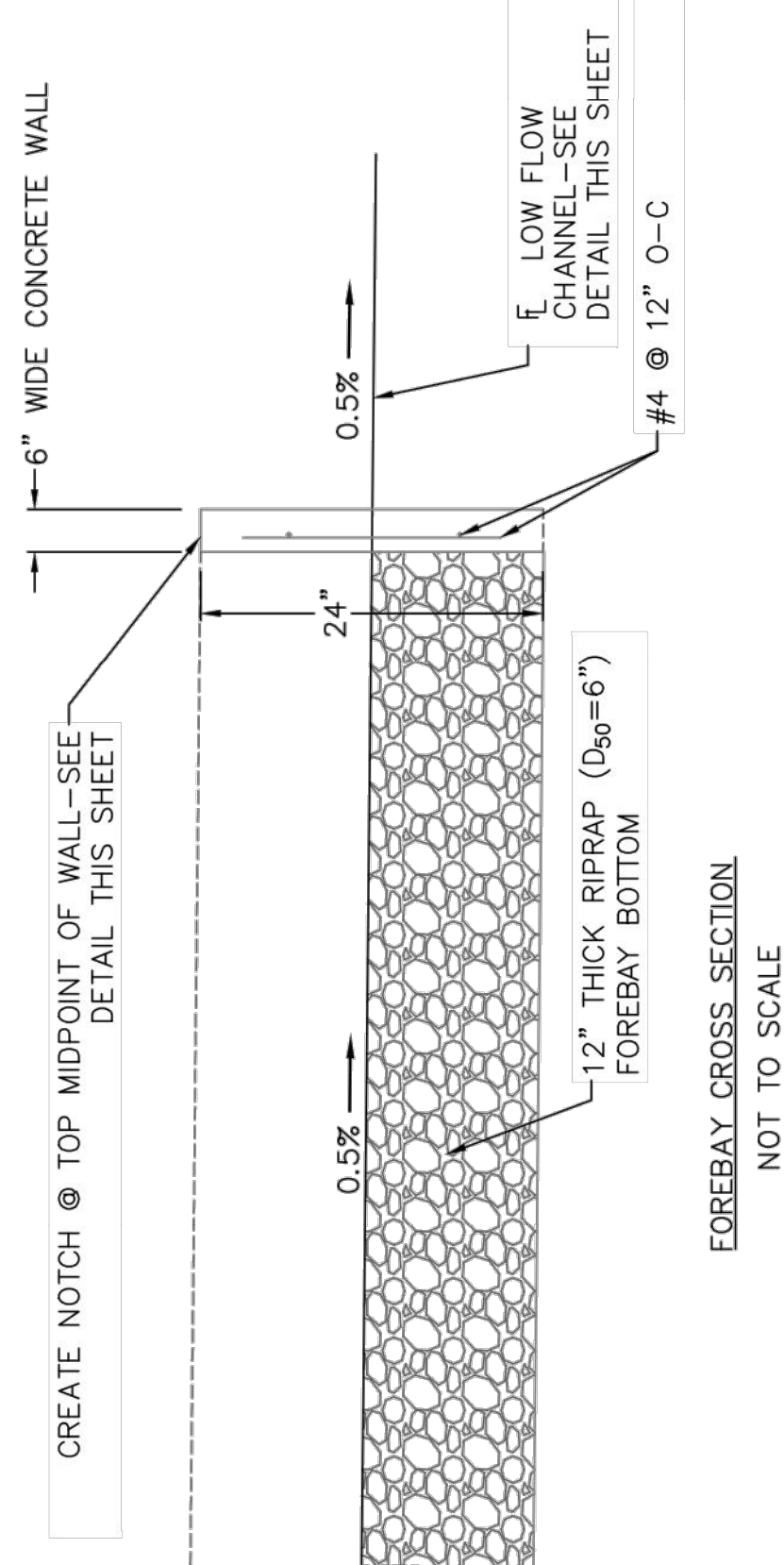
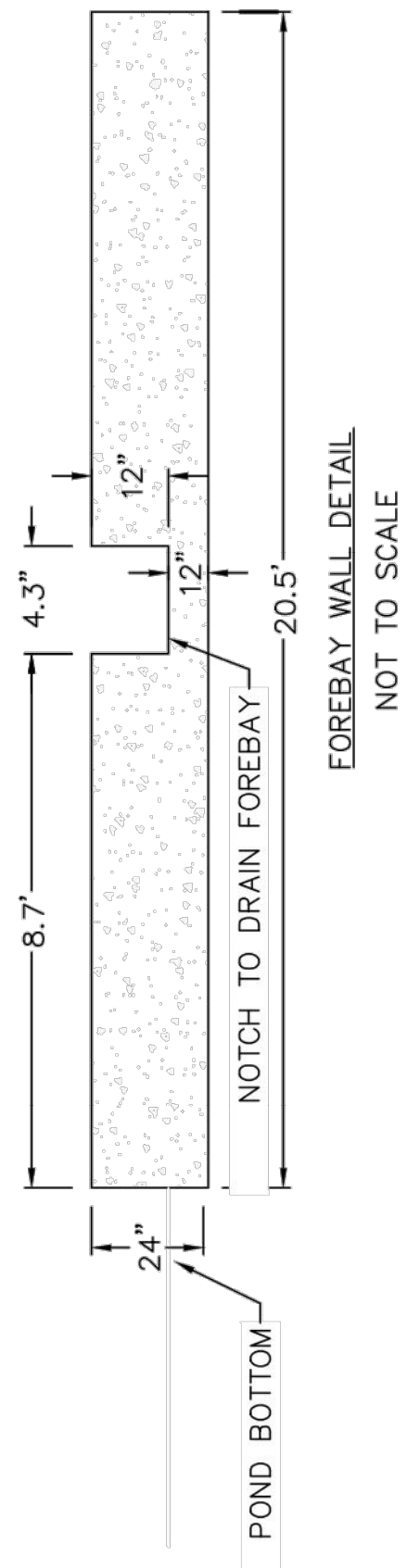
- WOCV TRASH RACKS:**
- WELL-SCREEN TRASH RACKS SHALL BE STAINLESS STEEL AND SHALL BE ATTACHED BY INTERMITTENT WELDS ALONG THE EDGE OF THE MOUNTAIN FRAME.
 - BAR GATE TRASH RACKS SHALL BE ALUMINUM AND SHALL BE BOLTED USING STAINLESS STEEL HARDWARE.
 - TRASH RACK WIDTHS ARE FOR SPECIFIED TRASH RACK MATERIAL. FINER WELL-SCREEN OR MESH SIZE THAN SPECIFIED IS ACCEPTABLE, HOWEVER, TRASH RACK DIMENSIONS NEED TO BE ADJUSTED FOR MATERIALS HAVING A DIFFERENT OPEN AREA/GROSS AREA RATION (R VALUE).

- OVERFLOW TRASH RACKS:**
- ALL TRASH RACKS SHALL BE MOUNTED USING STAINLESS STEEL STEEL HARDWARE AND BE PROVIDED WITH HINGED AND BOLTABLE ACCESS PANELS.
 - TRASH RACKS SHALL BE STAINLESS STEEL, ALUMINUM, OR STEEL. STEEL TRASH RACKS SHALL BE HOT DIP GALVANIZED AND MAY BE HOT POWDER PAINTED AFTER GALVANIZING.

- ORIFICE PLATES:**
- STEEL ORIFICE PLATES SHALL BE HOT DIP GALVANIZED AND MAY BE HOT POWDER PAINTED AFTER GALVANIZING.

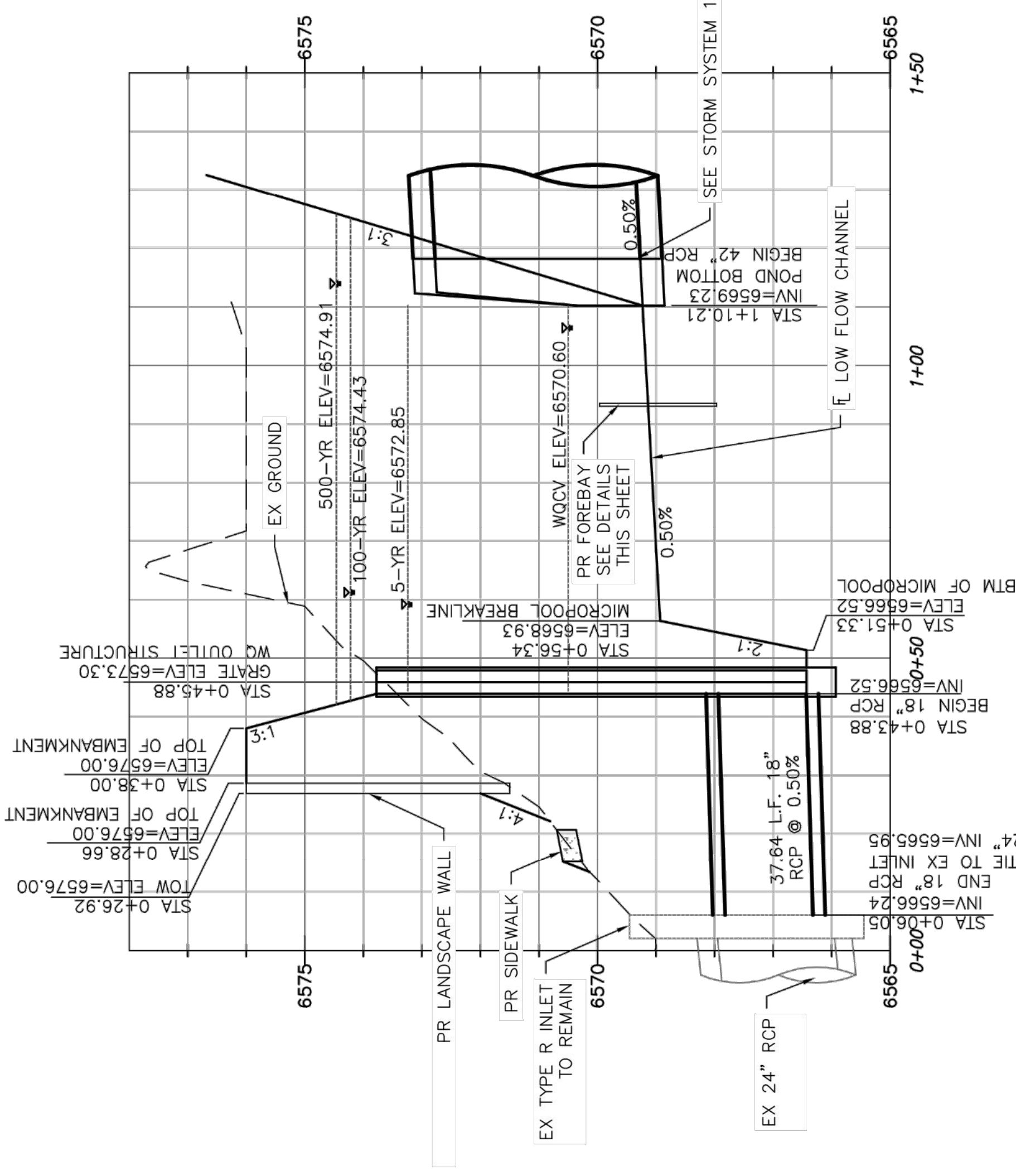
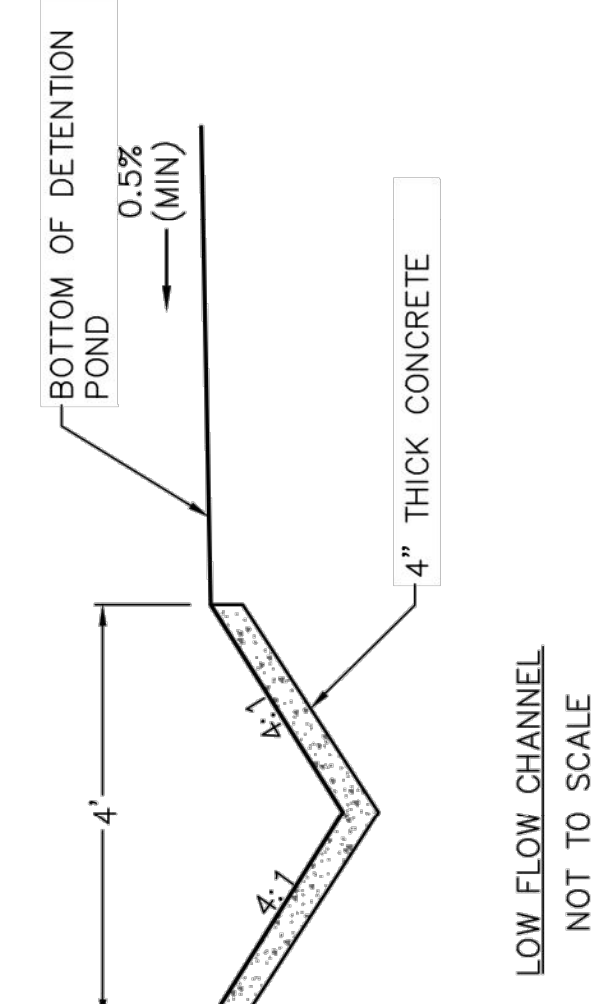
- STANDARD INLET GRATE:**
- STRUCTURAL STEEL FOR GRATES & GRATE INSTALLATION HARDWARE SHALL BE GALVANIZED & SHALL BE IN ACCORDANCE WITH 712.06.

- GENERAL NOTES:**
- STEPS SHALL BE PROVIDED WHEN DIMENSION "H" EXCEEDS 3-FT-6 IN. AND SHALL BE IN ACCORDANCE WITH AASHTO M 199.



LINE TABLE: ALIGNMENTS

LINE #	LENGTH	START STA	END STA	DIRECTION	START POINT (EAST, NORTH)	END POINT (EAST, NORTH)
L7	6.05	0+00.00	0+06.05	N79° 42' 46.45"E	(3239.78,5737.61)	(3245.73,5737.69)
L8	36.23	0+06.05	0+42.28	N54° 19' 54.69"E	(3245.73,5737.69)	(3275.16,5758.81)
L9	4.00	0+42.28	0+46.28	N86° 53' 02.73"E	(3275.16,5758.81)	(3279.16,5759.03)
L10	12.05	0+46.28	0+58.33	N75° 25' 25.98"E	(3279.16,5759.03)	(3290.82,5762.06)
L11	22.49	0+58.33	0+80.82	N63° 16' 09.27"E	(3290.82,5762.06)	(3310.91,5772.18)
L12	13.35	0+80.82	0+94.17	N82° 51' 22.50"E	(3310.91,5772.18)	(3324.15,5773.84)
L13	16.65	0+94.17	1+10.82	S62° 16' 52.95"E	(3324.15,5773.84)	(3340.65,5771.60)

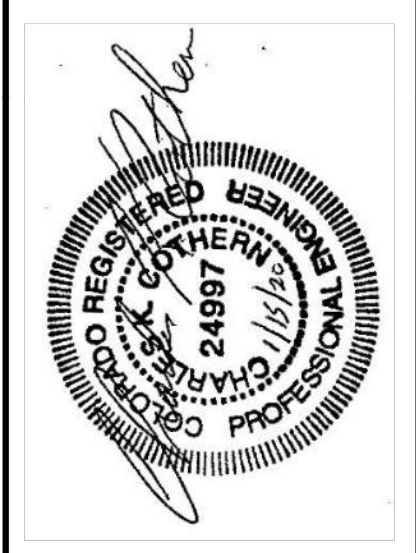


Computer File Information

Creation Date: 4-25-17 Initials: CMD
 Last Modification Date: Initials:
 Full Path & Drawing File Name:
 Acad Ver. 2014 Scale: Units: Feet

Index of Revisions

Stantec
 Stantec Consulting Inc.
 5725 MARK DABLING BLVD
 Suite 190
 Colorado Springs, CO 80919
 Tel. (719) 594-4335
 Fax. _____
 www.stantec.com



**GARDENS AT NORTH CAREFREE
NORTH WQ POND**

Project No./Code: 187608744

Designer: CD
 Detailer: MB
 Sheet Subset: SHEET 24 OF 34

EPC 1/16/20