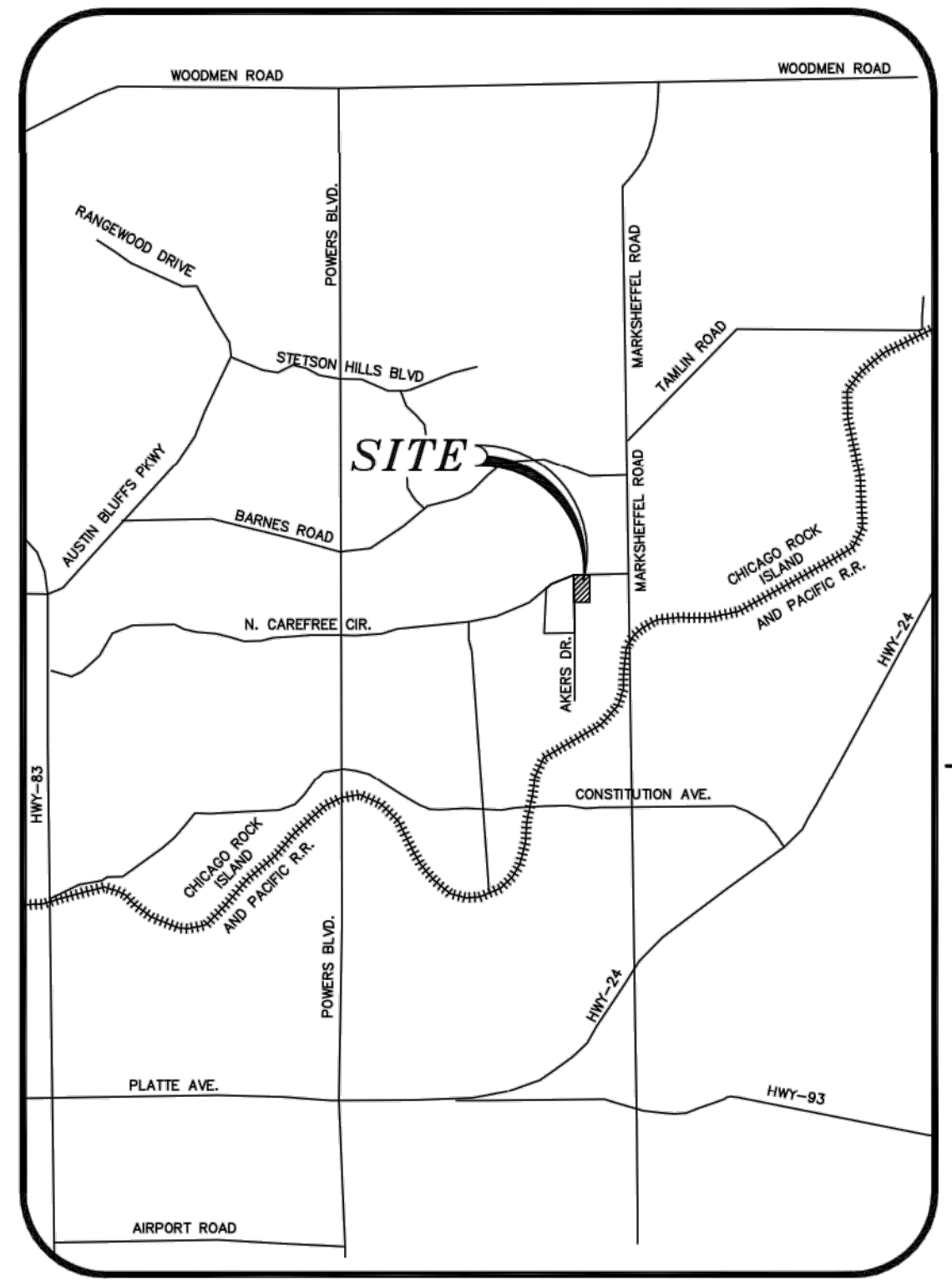
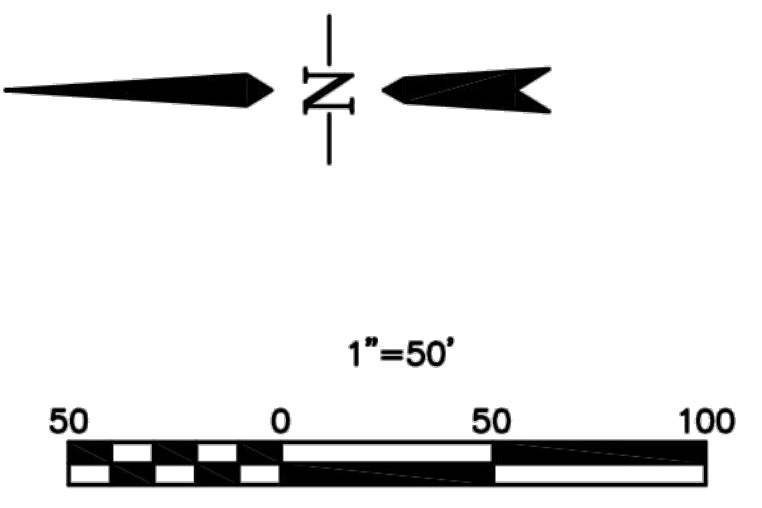


CURVE TABLE: ALIGNMENTS								
CURVE #	START STA	END STA	RADIUS	LENGTH	CHORD DIRECTION	DELTA	START POINT (EAST, NORTH)	END POINT (EAST, NORTH)
C1	8+77.29	9+08.14	500.00	30.85	S1° 43' 03.05"E	3.53	(3389.07,5647.31)	(3389.99,5616.48)
C2	10+85.37	11+67.06	52.00	81.68	S48° 29' 05.68"E	90.00	(3400.77,5439.57)	(3455.83,5390.83)
C3	12+48.06	13+29.74	52.00	81.68	N41° 30' 54.32"E	90.00	(3536.68,5395.75)	(3585.42,5450.82)
C4	15+01.26	15+32.11	500.00	30.85	N1° 43' 03.05"W	3.53	(3575.00,5622.02)	(3574.07,5652.85)
C5	20+51.97	21+33.65	52.00	81.68	N44° 57' 00.42"W	90.00	(3574.53,6172.71)	(3522.57,6224.76)
C6	22+14.65	22+96.33	52.00	81.68	S45° 02' 59.58"W	90.00	(3441.57,6224.83)	(3389.53,6172.87)
C201	200+86.79	201+33.32	500.00	46.53	N87° 23' 01.39"E	5.33	(3301.69,5690.86)	(3348.16,5692.98)

LINE TABLE: ALIGNMENTS									
LINE #	LENGTH	START STA	END STA	DIRECTION	START POINT (EAST, NORTH)	END POINT (EAST, NORTH)			
L1	427.29	4+50.00	8+77.29	S0° 02' 59.58"W	(3389.44,6074.60)	(3389.07,5647.31)			
L2	177.23	9+08.14	10+85.37	S3° 29' 05.68"E	(3389.99,5616.48)	(3400.77,5439.57)			
L3	81.00	11+67.06	12+48.06	N86° 30' 54.32"E	(3455.83,5390.83)	(3536.68,5395.75)			
L4	171.52	13+29.74	15+01.26	N3° 29' 05.68"W	(3585.42,5450.82)	(3575.00,5622.02)			
L5	519.86	15+32.11	20+51.97	N0° 02' 59.58"E	(3574.07,5652.85)	(3574.53,6172.71)			
L6	81.00	21+33.65	22+14.65	N89° 57' 00.42"W	(3522.57,6224.76)	(3441.57,6224.83)			
L7	98.27	22+96.33	23+94.61	S0° 02' 59.58"W	(3389.53,6172.87)	(3389.44,6074.60)			
L101	200.00	100+00.00	102+00.00	S89° 57' 00.42"E	(3203.42,6024.76)	(3403.42,6024.59)			
L201	86.79	200+00.00	200+86.79	N84° 43' 03.20"E	(3215.27,5682.87)	(3301.69,5690.86)			
L202	66.68	201+33.32	202+00.00	S89° 57' 00.42"E	(3348.16,5692.98)	(3414.84,5692.92)			

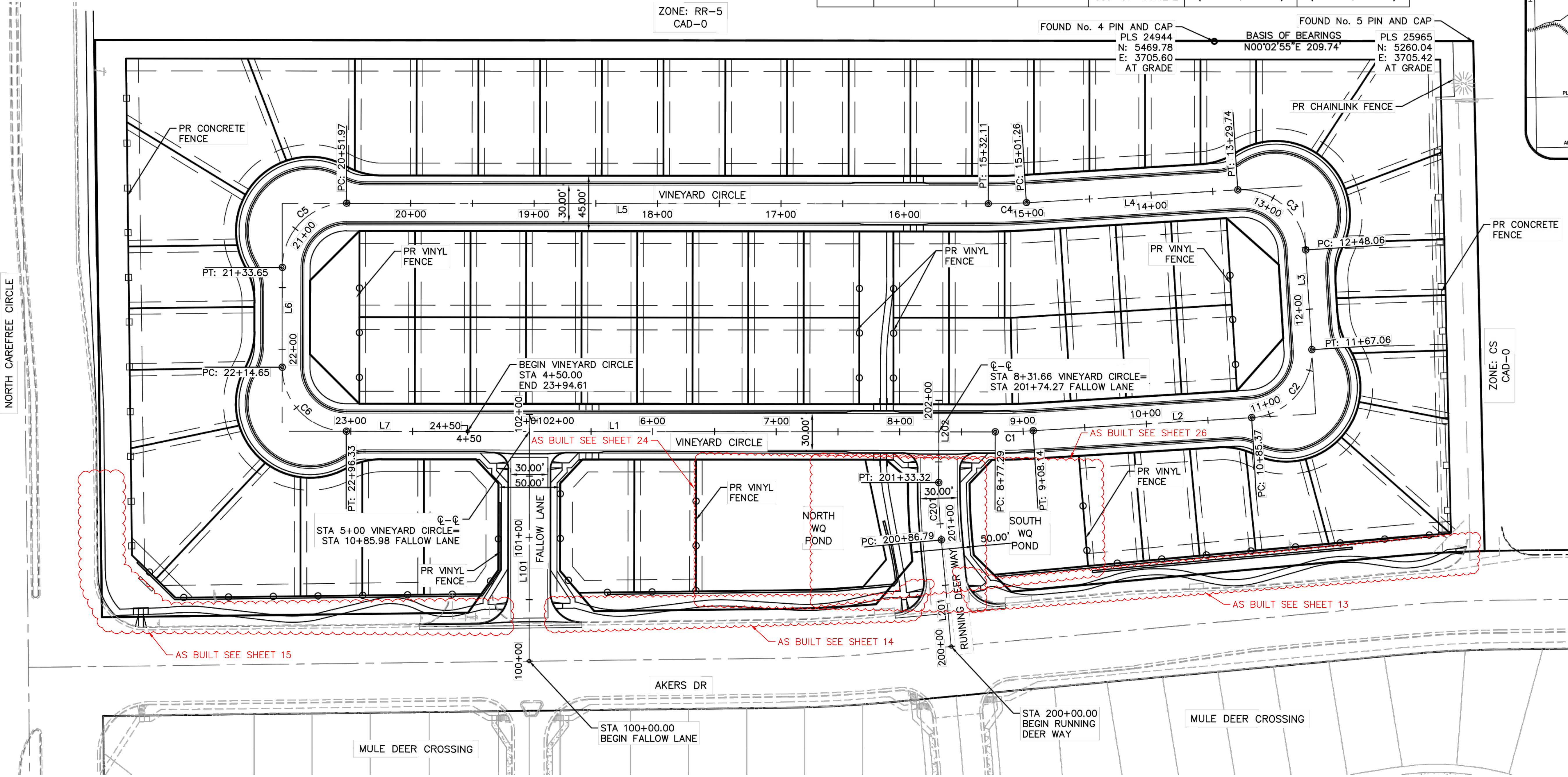


VICINITY MAP
N.T.S.



BASIS OF BEARINGS:

BEARINGS ARE BASED ON THE EAST LINE OF LOT 2, MULE DEER BUSINESS PARK FILING NO. 1, RECORDED AT RECEPTION NO. 206712353 IN THE RECORDS OF EL PASO COUNTY, SAID LINE BEARS N0°02'55"E FROM THE SOUTHEAST CORNER OF SAID LOT 2 (NO. 5 PIN AND CAP PLS 28955) TO THE NORTHEAST CORNER OF SAID LOT 2 (NO. 4 PIN AND CAP PLS 24964)

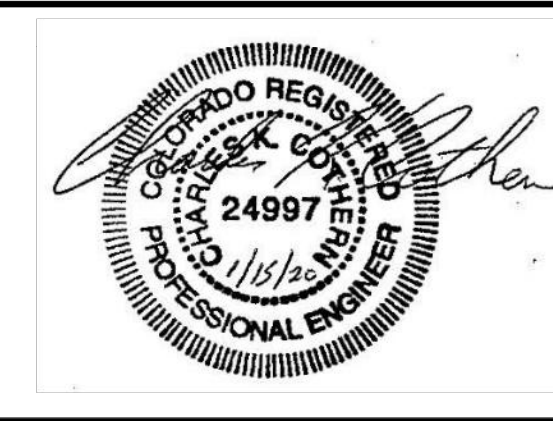


ZONE: RR-5
CAD-0

ZONE: CS
CAD-0

Computer File Information	
Creation Date: 4-25-17	Initials: CMD
Last Modification Date:	Initials:
Full Path & Drawing File Name:	
Acad Ver. 2014	Scale: Units: Feet

Index of Revisions	



GARDENS AT NORTH CAREFREE SITE PLAN	
Designer: CD	Structure Numbers
Detailer: MB	
Sheet Subset:	

Project No./Code	
187608744	
SHEET 4 OF 34	