
1865 WOODMOOR DRIVE

PREBLE'S MEADOW JUMPING MOUSE CRITICAL HABITAT ASSESSMENT

JULY 2018

OWNER/APPLICANT:

Sunshine Behavioral Health
30950 Rancho Viejo Road, Suite 225
San Juan Capistrano, CA 92675

CONSULTANT:

N.E.S. Inc.
619 North Cascade Avenue, Suite 200
Colorado Springs, Colorado 80903

LOCATION

The site is located at 1865 Woodmoor Drive in Monument, Colorado (Figure 1). The site is located east of Woodmoor Drive and north of Lake Woodmoor Drive. To the north is the Tri-Lakes Monument Fire Protection District Station and the Woodmoor Water & Sanitation District Office. To the west is vacant land owned by Lake Woodmoor Holdings LLC. To the east is vacant open space owned by Lake Woodmoor Development Inc. Immediately to the south is a pond, beyond which is Woodmoor Center, a commercial development. The site is approximately 5.11 acres and is currently an operating Ramada by Wyndham hotel.



Figure 1. Vicinity Map

PREBLE'S MEADOW JUMPING MOUSE CRITICAL HABITAT ASSESSMENT

Critical habitat is defined as specific areas that contain the physical or biological features essential to the conservation of an endangered or threatened species under the Endangered Species Act (ESA) (USFWS, 2018). The ESA requires the Fish and Wildlife Service to designate critical habitat areas and maps for endangered species are available on the USFWS website (USFWS, 2018).

The site, located at 1865 Woodmoor Drive, is not in a critical habitat area as identified by Unit 11 of the Critical Habitat for the Preble's Meadow Jumping Mouse, available on the US Fish and Wildlife website (USFWS, 2018) (Figure 2).

The closest PMJM critical habitat area is located approximately 1,060 feet (0.2 miles) south of the site, along Dirty Woman Creek south of 2nd Street/ Highway 105 (USFWS, 2018) (Figure 3). The site is separated from the critical habitat area along Dirty Woman Creek by development, including residential communities and a commercial center, along Lake Woodmoor Drive (Figure 4). The surrounding parcels are mostly developed and only small areas of native prairie and shrub vegetation remain (ECOS, 2016,17). Those remnant areas of vegetation are degraded and discontinuous (ECOS, 2016,17). There is no riparian corridor or connection to the site, therefore, it is unlikely that PMJM would disperse from Dirty Woman Creek to the site (ECOS, 2016,17).

The site is an existing development and the proposed project is a change of use from a hotel to a rehabilitation facility. There are no proposed exterior changes or disturbances to the site, aside from minor improvements to comply with the El Paso County Land Development Code. Those minor improvements include the addition of parking lot islands and shade trees and the addition of a perimeter fence and entry gate.

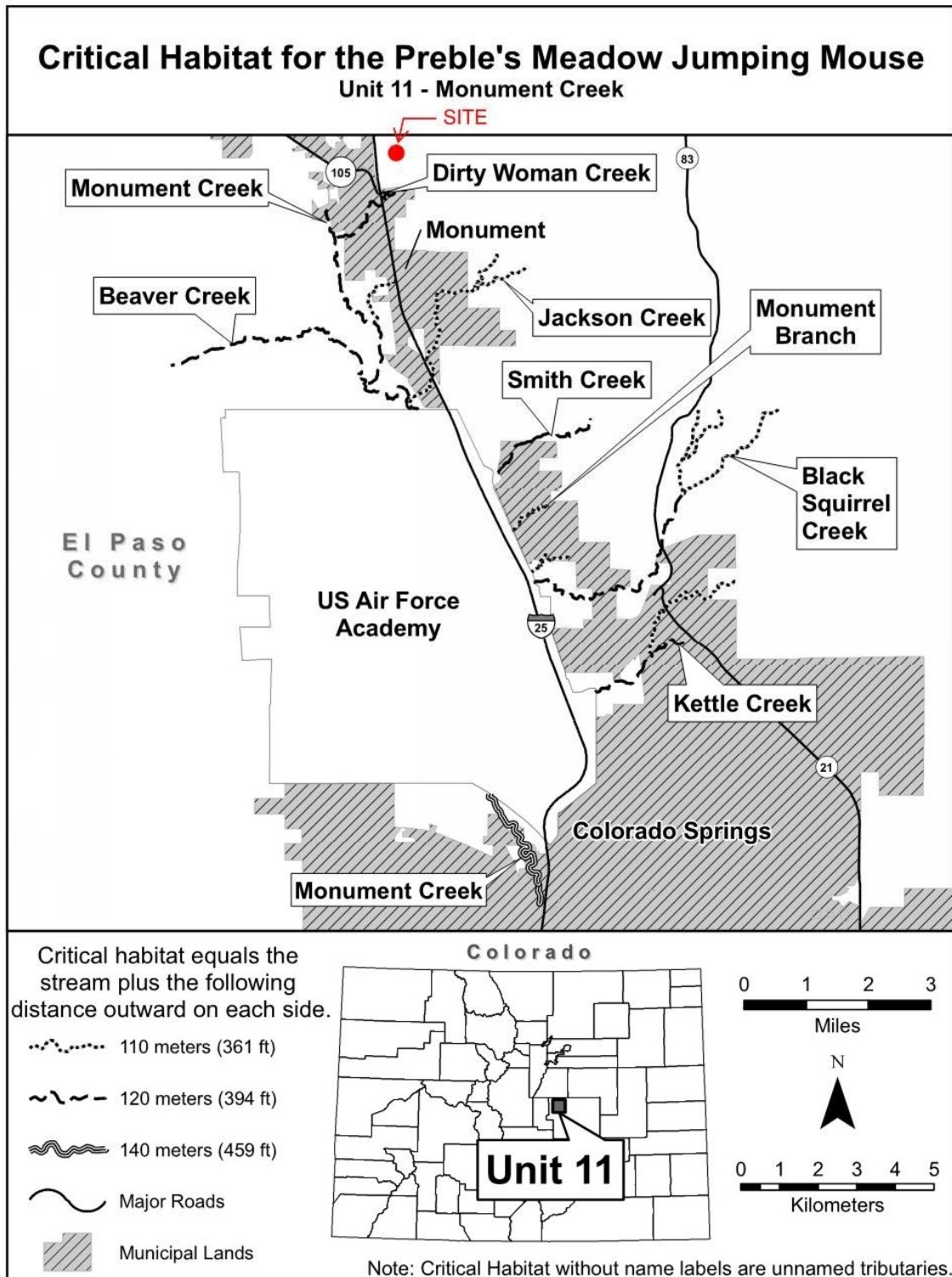


Figure 2. Critical Habitat for the Preble's Meadow Jumping Mouse- Unit 11 Monument Creek (established in 2010) (Source: US Fish and Wildlife Service)

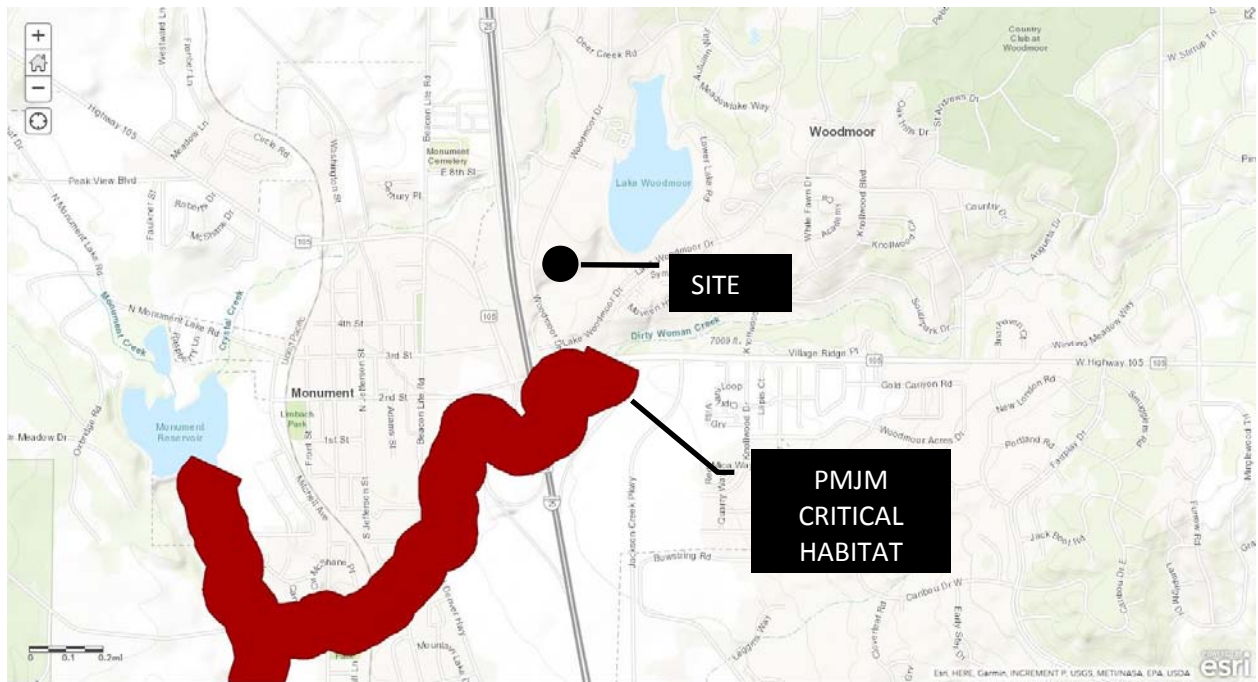


Figure 3. Critical Habitat for Threatened and Endangered Species (Source: U.S. Fish and Wildlife Service)



Figure 4. PMJM Critical Habitat (Source: US. Fish and Wildlife Service, map prepared by N.E.S. Inc.)

REFERENCES

US Fish and Wildlife Service. (2018). *Critical Habitat under the Endangered Species Act*. Retrieved June 18, 2018 from: <https://www.fws.gov/southeast/endangered-species-act/critical-habitat/>

US Fish and Wildlife Service. (2018). *Preble's meadow jumping mouse (Zapus hudsonius preblei)*. Retrieved June 18, 2018 from: <https://ecos.fws.gov/ecp0/profile/speciesProfile.action?spcode=A0C2>

ECOS Ecosystem Services. (2017). *Natural Features, Wetland, Wildfire, Noxious Weeds & Wildlife Report for The Beach at Woodmoor in El Paso County, Colorado*.

ECOS Ecosystem Services. (2016). *Natural Features, Wetland, Wildfire, Noxious Weeds & Wildlife Report for North Bay Lake Woodmoor in El Paso County, Colorado*.