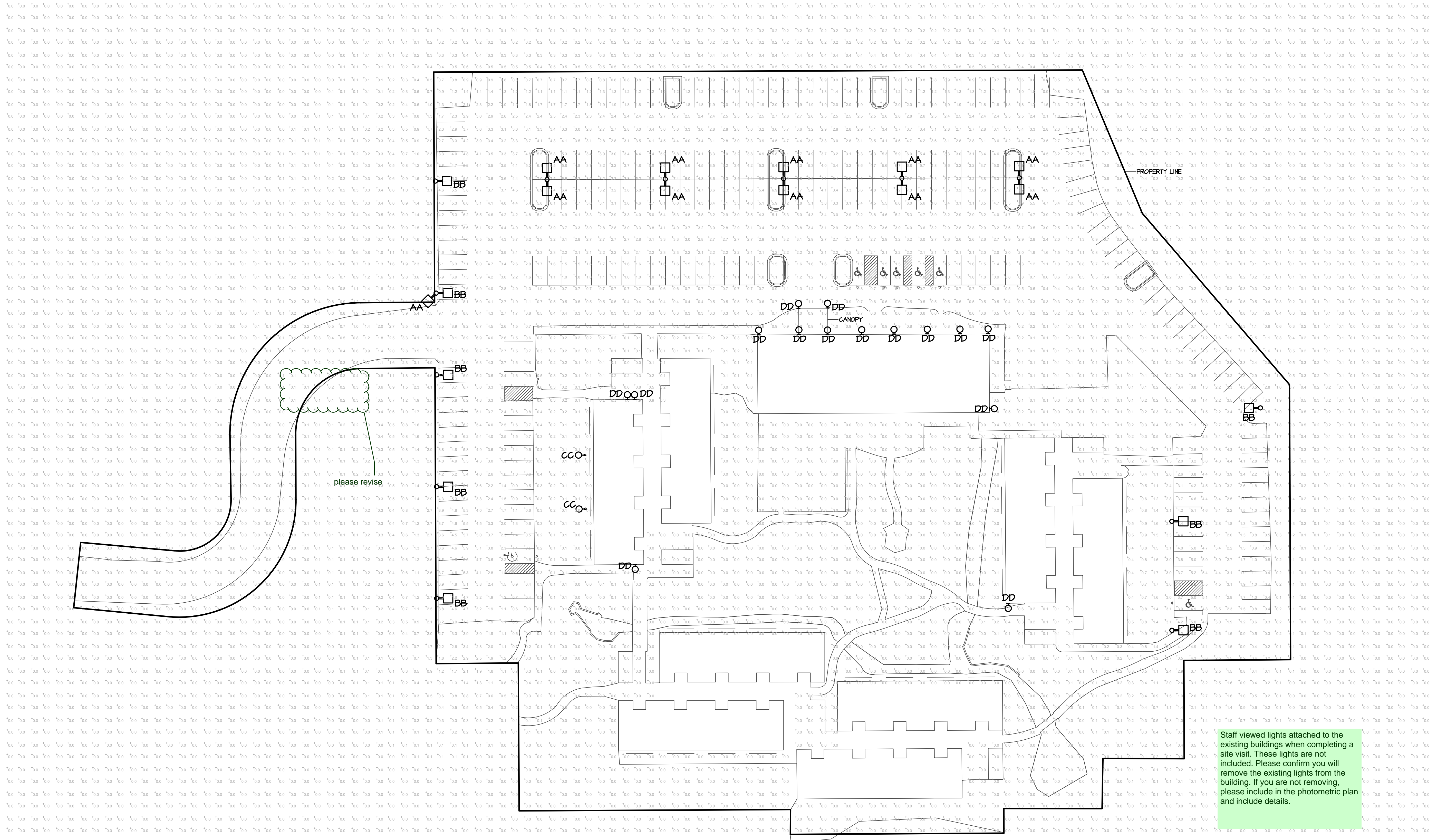


1865
WOODMOOR
DRIVE
MONUMENT
COLORADO

DATE: 7-6-2018
PROJECT MGR: TM
PREPARED BY: TM



Staff viewed lights attached to the existing buildings when completing a site visit. These lights are not included. Please confirm you will remove the existing lights from the building. If you are not removing, please include in the photometric plan and include details.

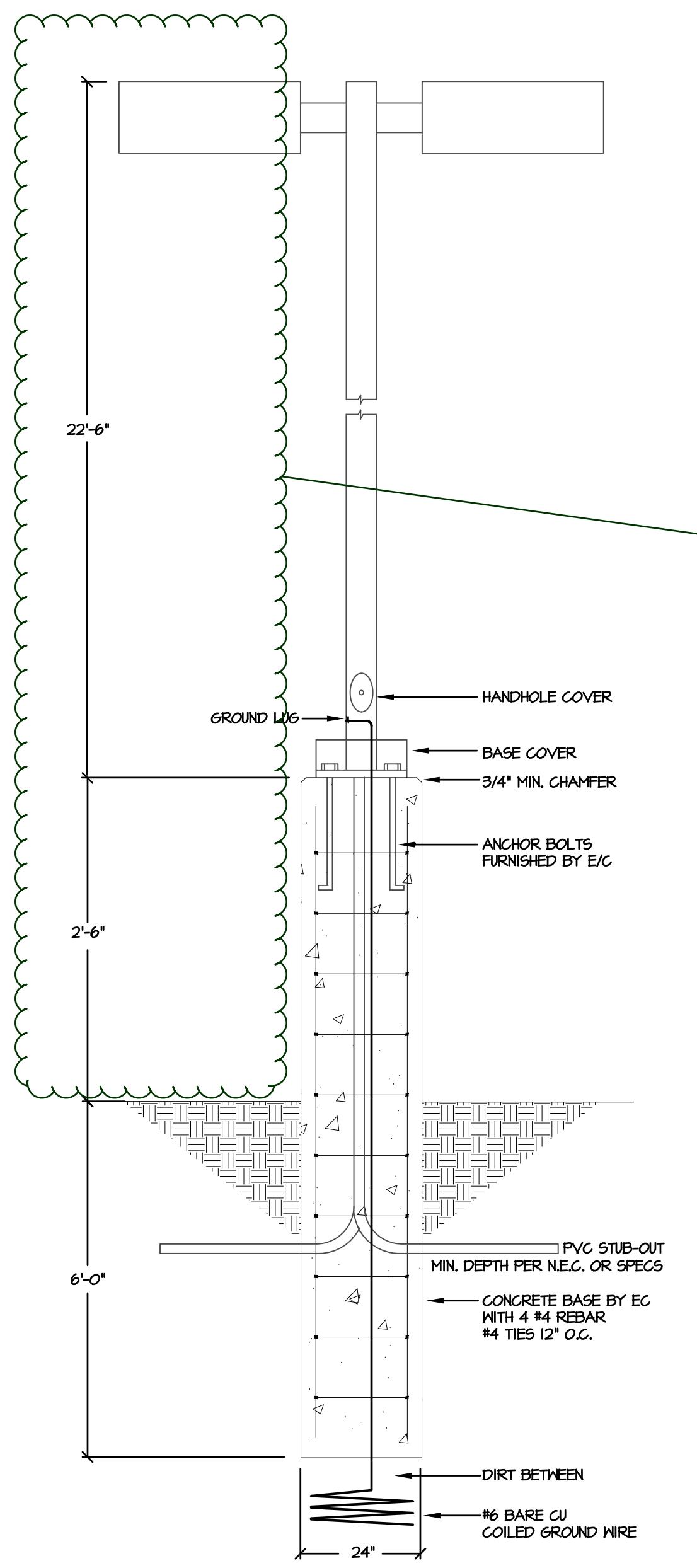
DATE: 9-12-18
BY: TM
DESCRIPTION: Revised Per County Comments

SITE PHOTOMETRIC PLAN

E-1
5 OF 6

PPR1830

LIGHTING FIXTURE SCHEDULE												
LUMINAIRE								LAMPS				
ID	MANUFACTURER	MODEL	CATALOG NUMBER	DESCRIPTION	VOLTAGE	DIMMING	MOUNTING	QTY.	TYPE	WATTS	LUMENS	COLOR TEMP./CRI
AA	ILP	AREA LIGHT	AL-140WLED-UNIV-40-T4-BD50PC	PARKING LOT AREA LIGHTING FIXTURE, UNIVERSAL VOLTAGE (120-277V) DRIVER, TYPE 4 DISTRIBUTION, INTEGRAL 50% STEP DIMMING PHOTOCELL FOR LIGHT REDUCTION CONTROL	120-277	Y	POLE (25'-0" AF6)	1	LED	140	16042	4000/70
BB	ILP	AREA LIGHT	AL-140WLED-UNIV-40-T3-BD50PC	SIMILAR TO TYPE "AA" EXCEPT TYPE 3 DISTRIBUTION	120-277	Y	POLE (25'-0" AF6)	1	LED	140	16123	4000/70
CC	ILP	LARGE FLOOD	FLL-85WLED-UNIV-40	GRADE MOUNTED DIRECTIONAL FLOOD LIGHT, UNIVERSAL VOLTAGE (120-277V) DRIVER	120-277	N	GRADE MOUNT	1	LED	85	10240	4000/80
DD	--	--	--	EXISTING WALL MOUNTED DECORATIVE ARCHITECTURAL SCONCE WITH MEDIUM BASE INCANDESCENT LAMP	120	N	WALL MOUNT	1	INCAND	20	--	--



POLE BASE DIAGRAM
NOT TO SCALE

Per 6.2.3.B.2 the pole lights cannot exceed 20 feet in the parking areas. You must request alternative lighting or replace with shorter lights.



FIXTURE TYPE DD (EXISTING)
SCALE: NONE

Project Name: _____ Part Number: _____ Type: _____

AREA LIGHT - 140W LED OUTDOOR



407-478-3759
www.ilp-inc.com

FEATURES

- Sleek low profile die cast aluminum bronze housing (std. & in stock)
- Multiple housing color options (see third page)
- Custom color options available (call factory for pricing)
- Type II, III, IV, & VS optics available
- Tool-less hinged drop down driver access
- Universal Pole Mounting Bracket available (UPMB)
- Swappable driver cover
- IP66 Rated
- 3000K, 4000K, & 5000K color options
- 0-10V Dimmable Driver
- Dark Sky Compliant^{1,2}
- 5 year warranty
- DesignLights Consortium[®] Qualified Luminaire

¹Must select 3000K to qualify
²Must select UPMB, ARMS, or HTMA mounting options to qualify



SUITABLE APPLICATIONS

- Parking Lots
- Car Dealerships
- Roadways
- Shopping Centers

LED SYSTEMS INFO	4000K				5000K			
	T2	T3	T4	T5S	T2	T3	T4	T5S
Calculated L70 (TM-21)	>100K	>100K	>100K	>100K	>100K	>100K	>100K	>100K
Delivered Lumens	15,122 lm	16,123 lm	16,042 lm	16,607 lm	15,510 lm	16,537 lm	16,453 lm	17,033 lm
Total Input Watts	138 W	138 W	138 W	138 W	138 W	138 W	138 W	138 W
Luminaire Efficacy Rating (LER)	110 lm/W	117 lm/W	117 lm/W	121 lm/W	113 lm/W	120 lm/W	120 lm/W	124 lm/W
Correlated Color Temperature (CCT)	4000K	4000K	4000K	4000K	5000K	5000K	5000K	5000K
Color Rendering Index (CRI)	>70	>70	>70	>70	>70	>70	>70	>70
BUG Rating	B3-UD-G3	B3-UD-G3	B3-UD-G3	B4-UD-G2	B3-UD-G3	B3-UD-G3	B3-UD-G3	B4-UD-G2
Ambient Temperature Range	-40°F - 115°F	-40°F - 115°F	-40°F - 115°F	-40°F - 115°F	-40°F - 115°F	-40°F - 115°F	-40°F - 115°F	-40°F - 115°F
Universal Driver	120-277 V	120-277 V	120-277 V	120-277 V	120-277 V	120-277 V	120-277 V	120-277 V

LED System data above based on AL-140WLED-UNIV-40 and AL-140WLED-UNIV-50
LED Lumen maintenance estimates based on TM-21 projections for the light source at 25°C ambient.

ORDERING GUIDE:

Series	Watts	Driver	Color Options	Options
AL Area Light	140WLED	UNIV 120-277V Driver	50 T2 40 T3 30 T4 T5S	UPMB Universal Pole Mounting Bracket UPMBR Universal Pole Mounting Bracket w/ Round Pole Adapter 4" - 5" WMB Wall Mount Bracket AL-SLFF Adjustable Slip Filter AL-SB Adjustable Swivel Bracket HTMA Horizontal Tenon Mount Adaptor ARMS-S 6" Straight Arm Adaptor for Square Pole ARMS-Rx 6" Straight Arm Adaptor for Round Pole (x = diameter) GS Glare Shield SP1 10KA Max Univolt Surge Protector SP2 22KA Max Univolt Surge Protector TLPC Univ. twist lock photocell factory installed receptacle w/ field installed photocell 7PINPCR 7 Pin Photocell Factory Installed Receptacle WLOS Wet Location Rated Occupancy Sensor USBD User Select Bi-Level Dim w/ Occ. Sensor BDxx Preset Bi-Level Dim Sensor (xx=1, eg. 20, 30) BDxxPC Preset Bi-Level Dim Sensor w/ Photocell (xx=1, eg. 20, 30) FSR100 Remote Configuration Tool for WLOS & USBD Control Options SD480V 480V Step Down Transformer SD347V 347V Step Down Transformer

¹ Due to the optical pattern of the T5S optic the HSS is not applicable

FIXTURE TYPE AA & BB
SCALE: NONE

Project Name: _____ Part Number: _____ Type: _____

LARGE FLOOD - 85W LED FLOODS 2.0



407-478-3759
www.ilp-inc.com

FEATURES

- Die-cast aluminum housing
- Diffused tempered glass lens
- Pole & tenon mounting options also available (3' cord & watertight bushing included)
- Hinged front frame w/ removable back cover for easy access to driver
- Watertight cord grip installed
- Standard yoke included
- 4000K & 5000K color options
- 0-10V Dimmable Driver
- Bronze housing (std. & in stock)
- Multiple housing color options (see Color Guide section, call factory for pricing)
- Custom color options available (Call factory for pricing)
- Rated for outdoor use
- IP65 Rating
- ETL Listed
- 5 Year Warranty
- DesignLights Consortium[®] Premium Qualified Luminaire



SUITABLE APPLICATIONS

- Parking Lots
- Buildings
- General Area Lighting

LED SYSTEMS INFO	4000K	5000K
Calculated L70 (TM-21)	>100K	>100K
Delivered Lumens	10,240 lm	9,684 lm
Total Input Watts	83 W	81 W
Luminaire Efficacy Rating (LER)	123 lm/W	119 lm/W
Correlated Color Temperature (CCT)	4000K	5000K
Color Rendering Index (CRI)	>80	>80
Ambient Temperature Range	-20°F - 115°F	-20°F - 115°F
Universal Driver	120-277 V	120-277 V

LED System data above based on FLL-85WLED-UNIV-40 & FLL-85WLED-UNIV-50
LED Lumen Maintenance Estimates based on TM-21 projections for the light source at 25°C ambient.

ORDERING GUIDE:

Series	Watts	Driver	Color	Description
FLL Large Flood	85WLED	UNIV 120-277 V Driver	50 40	CORdx Cord (x = ft) PCxx Photocell (xxx = Voltage) GS Glare Shield WG Wire Guard PMB Pole Mount Bracket (3' cord & bushing incl.) TMB Tenon Mount Bracket (3' cord & bushing incl.) SP1 10KA Max Univolt Surge Protector SD480V 480V Step Down Transformer SD347V 347V Step Down Transformer

FIXTURE TYPE CC
SCALE: NONE

MEP PROJECT # 18288
DESIGNED BY: TJM CHECKED BY: DGM



MEP ENGINEERING INC.
CLIENT CENTRIC CONSULTING

6402 S. Troy Circle, Suite 100 (W) 303.936.1633
Centennial, CO 80111 (F) 303.934.3299
info@mep-eng.com www.mep-eng.com

1865
WOODMOOR
DRIVE
MONUMENT
COLORADO

DATE: 9-12-18
PROJECT MGR: TM
PREPARED BY: TM

Series	Watts	Driver	Color	Description
FLL Large Flood	85WLED	UNIV 120-277 V Driver	50 40	CORdx Cord (x = ft) PCxx Photocell (xxx = Voltage) GS Glare Shield WG Wire Guard PMB Pole Mount Bracket (3' cord & bushing incl.) TMB Tenon Mount Bracket (3' cord & bushing incl.) SP1 10KA Max Univolt Surge Protector SD480V 480V Step Down Transformer SD347V 347V Step Down Transformer

DATE	BY	DESCRIPTION
9-12-18	TM	Revised Per County Comments

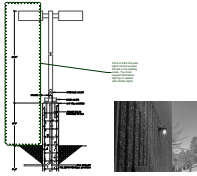
SITE PHOTOMETRIC DETAILS

E-2
6 OF 6

PPR1830

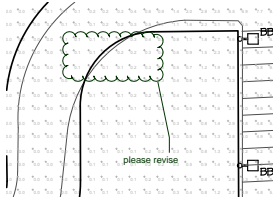
Markup Summary

dsdruiz (3)



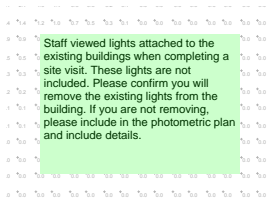
Subject: Cloud+
Page Label: [2] 18288 Site Photometric Plan-SITE PHOTOMETRIC DETAILS
Lock: Unlocked
Author: dsdruiz
Date: 10/16/2018 4:03:33 PM
Color: ■

Per 6.2.3.B.2 the pole lights cannot exceed 20 feet in the parking areas. You must request alternative lighting or replace with shorter lights.



Subject: Cloud+
Page Label: [1] 18288 Site Photometric Plan-SITE PHOTOMETRICS
Lock: Unlocked
Author: dsdruiz
Date: 10/16/2018 4:05:43 PM
Color: ■

please revise



Subject: Text Box
Page Label: [1] 18288 Site Photometric Plan-SITE PHOTOMETRICS
Lock: Unlocked
Author: dsdruiz
Date: 10/17/2018 10:45:00 AM
Color: ■

Staff viewed lights attached to the existing buildings when completing a site visit. These lights are not included. Please confirm you will remove the existing lights from the building. If you are not removing, please include in the photometric plan and include details.