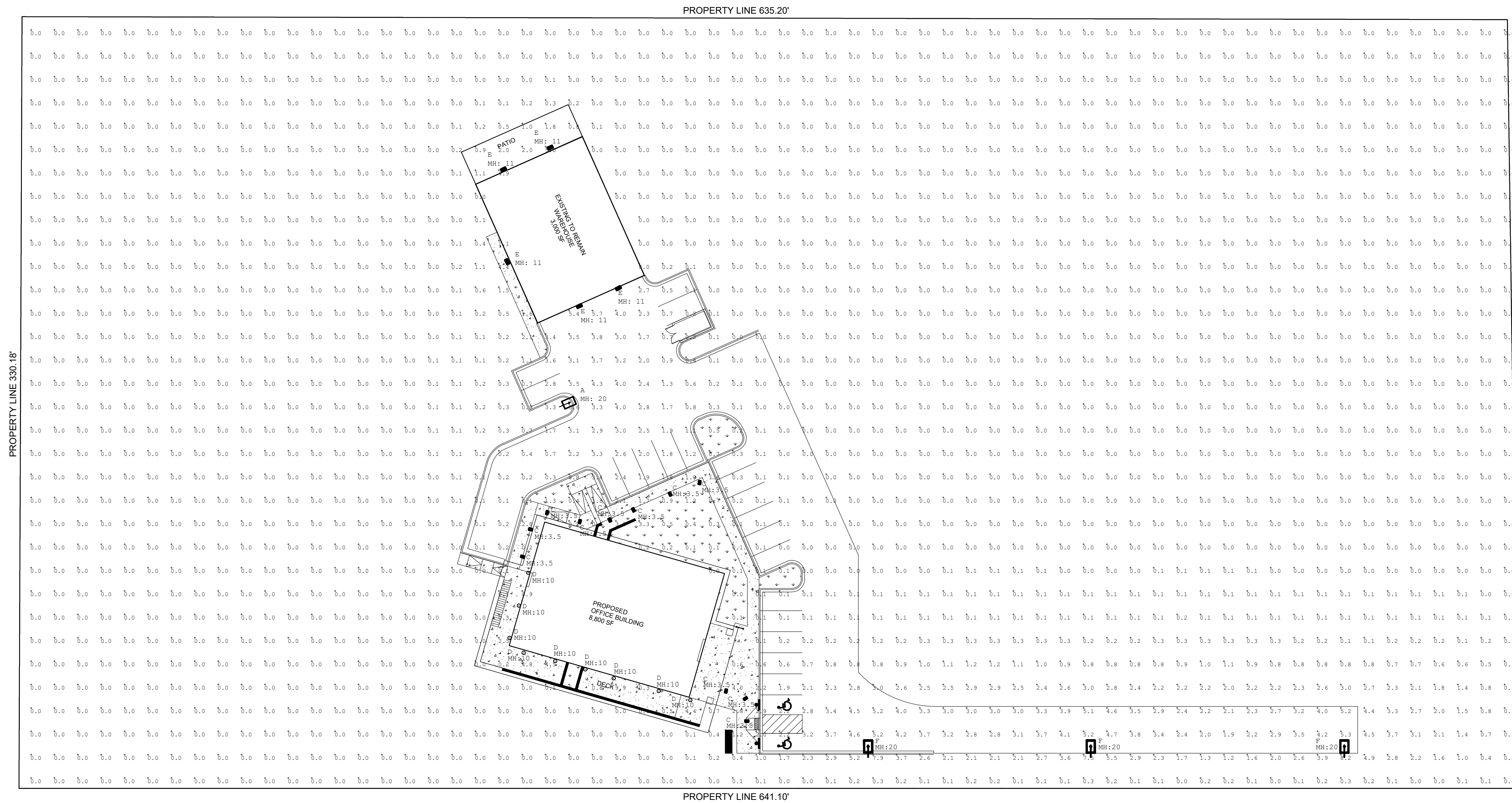


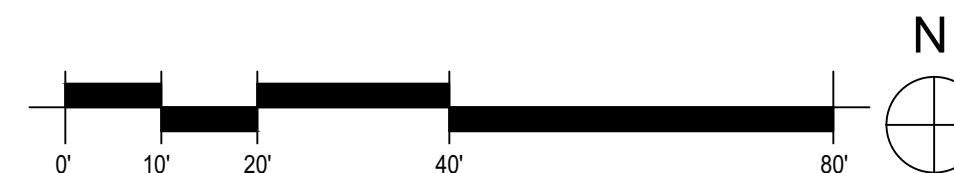
SITE DEVELOPMENT PLAN

BLACK FOREST OFFICE

N1/2 NE1/4 SE 1/4 SE 1/4 OF SECTION 07, TOWNSHIP 12 SOUTH, RANGE 65 WEST OF THE 6TH P.M., EL PASO COUNTY, COLORADO
4.77 ACRES



1 PHOTOMETRIC SITE PLAN
1/32" = 1'-0"



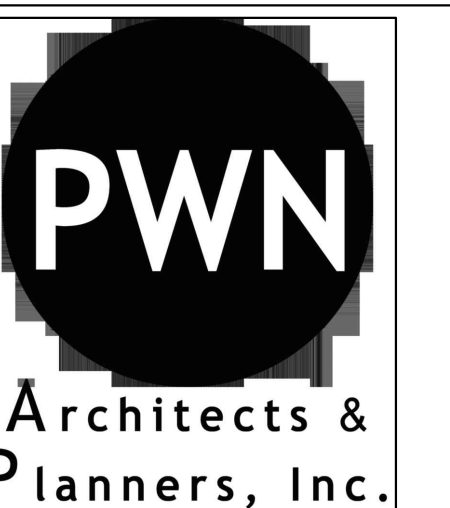
Symbol	Qty	Label	Lum. Watts	Lum. Lumens	LLF	Description
A	1	A	166	18459	0.900	GLEON-AP-03-LED-E1-T4W
C	11	C	28.9	557	0.900	7000BSYH428CUNV830Z
D	9	D	20	1256	0.900	PC610-120V-LRD4K-1200-SL-WFL-D
E	5	E	12.2	1418	0.900	XTOR1B
F	3	F	166	15881	0.900	GLEON-AP-03-LED-E1-SL3-HSS

Label	CalcType	Units	Avg	Max	Min	Avg/Min	Max/Min
SITE	Illuminance	Fc	0.33	9.9	0.0	N.A.	N.A.
Deck under overhang	Illuminance	Fc	2.26	9.9	0.2	11.30	49.50
parking and drive 1	Illuminance	Fc	1.94	5.7	0.0	N.A.	N.A.

PHOTOMETRIC PLAN

SHEET
9 OF 10

PROJECT NUMBER: SP0000-00
DATE PREPARED: 09-15-2020
PLANS PREPARED FOR:
BLACK FOREST, LLC
12740 BLACK FOREST RD.
COLORADO SPRINGS, CO 80908



4949 S. Syracuse St. | Suite 320
Denver, CO 80237
voice.303.649.9880 fax.303.649.9870
pwnarchitects.com

