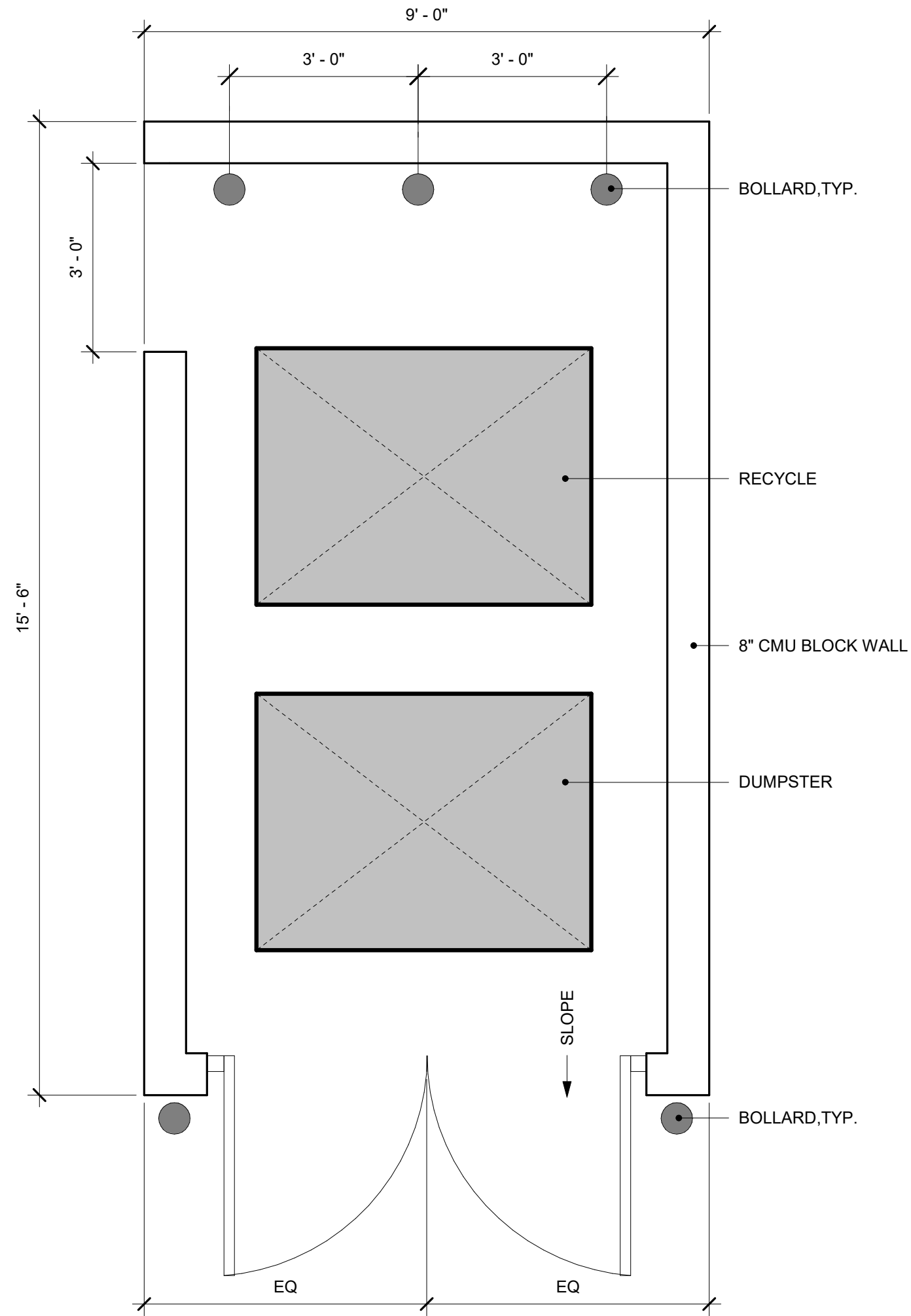


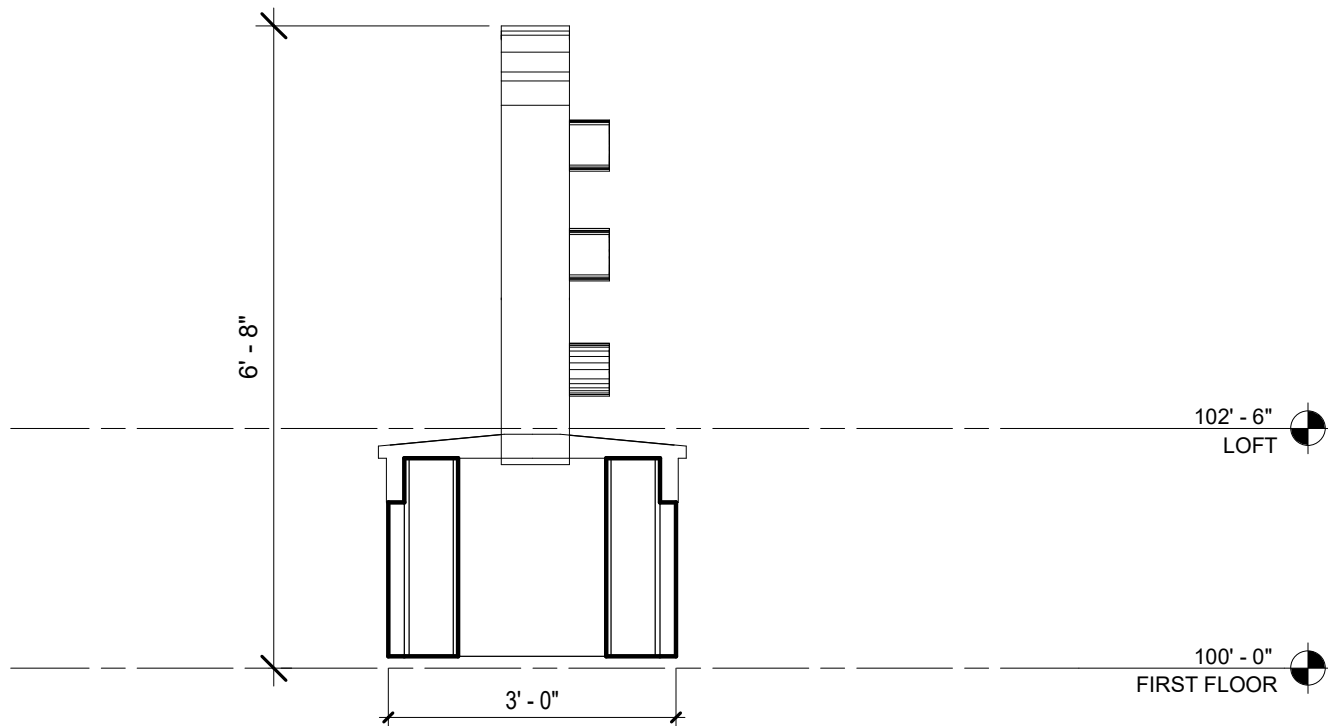
SITE DEVELOPMENT PLAN

BLACK FOREST OFFICE

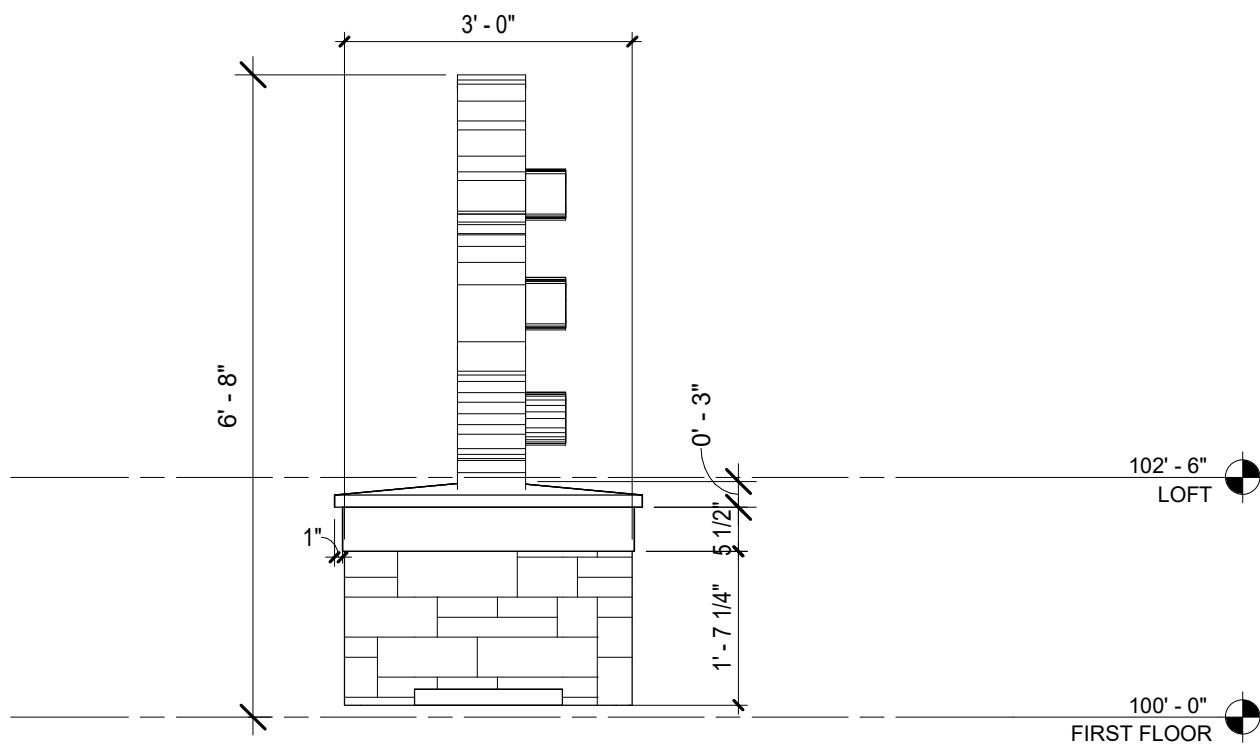
N1/2 NE1/4 SE1/4 SE1/4 OF SECTION 07, TOWNSHIP 12 SOUTH, RANGE 65 WEST OF
THE 6TH P.M., EL PASO COUNTY, COLORADO
4.77 ACRES



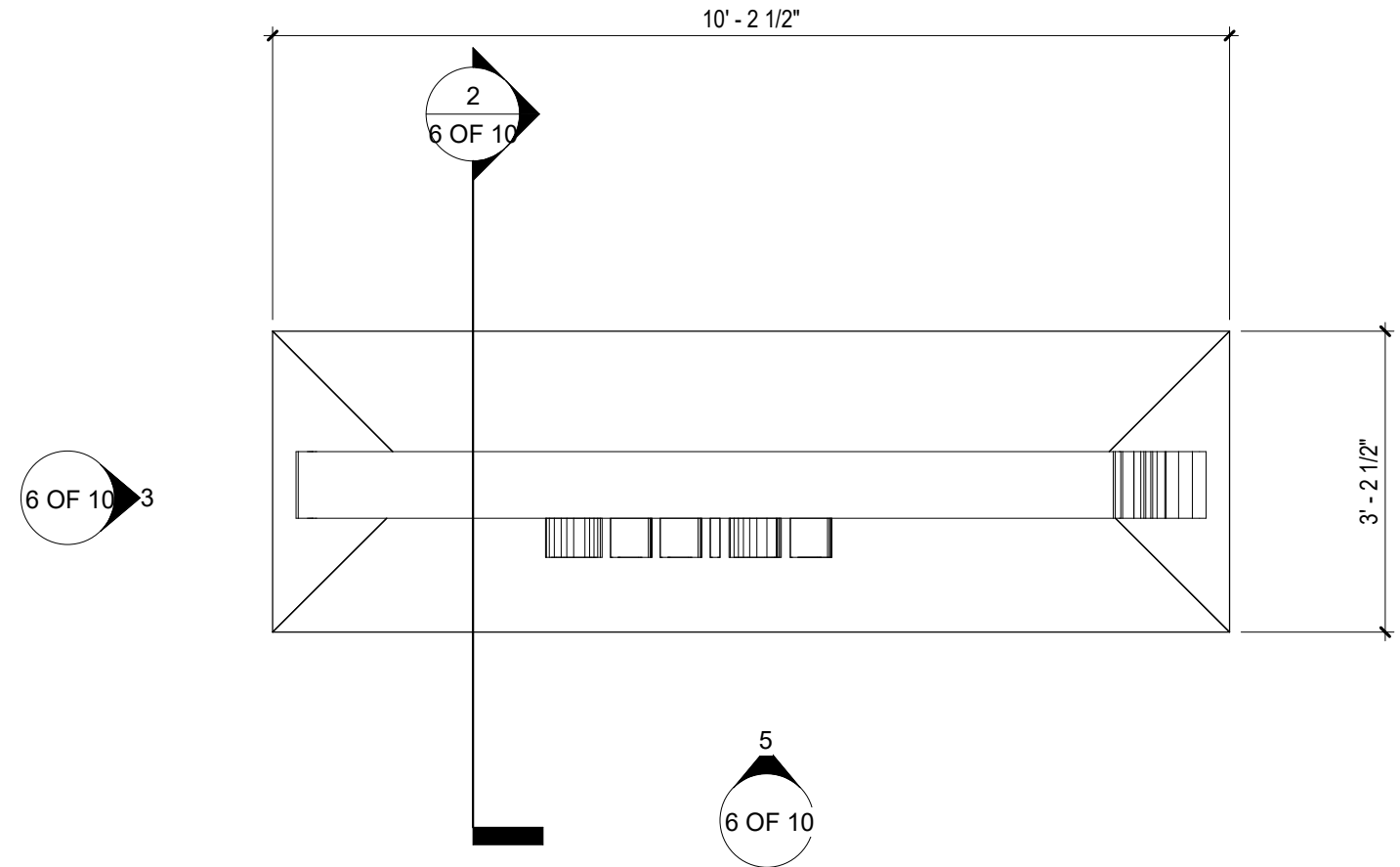
1 TRASH ENCLOSURE
1/2" = 1'-0"



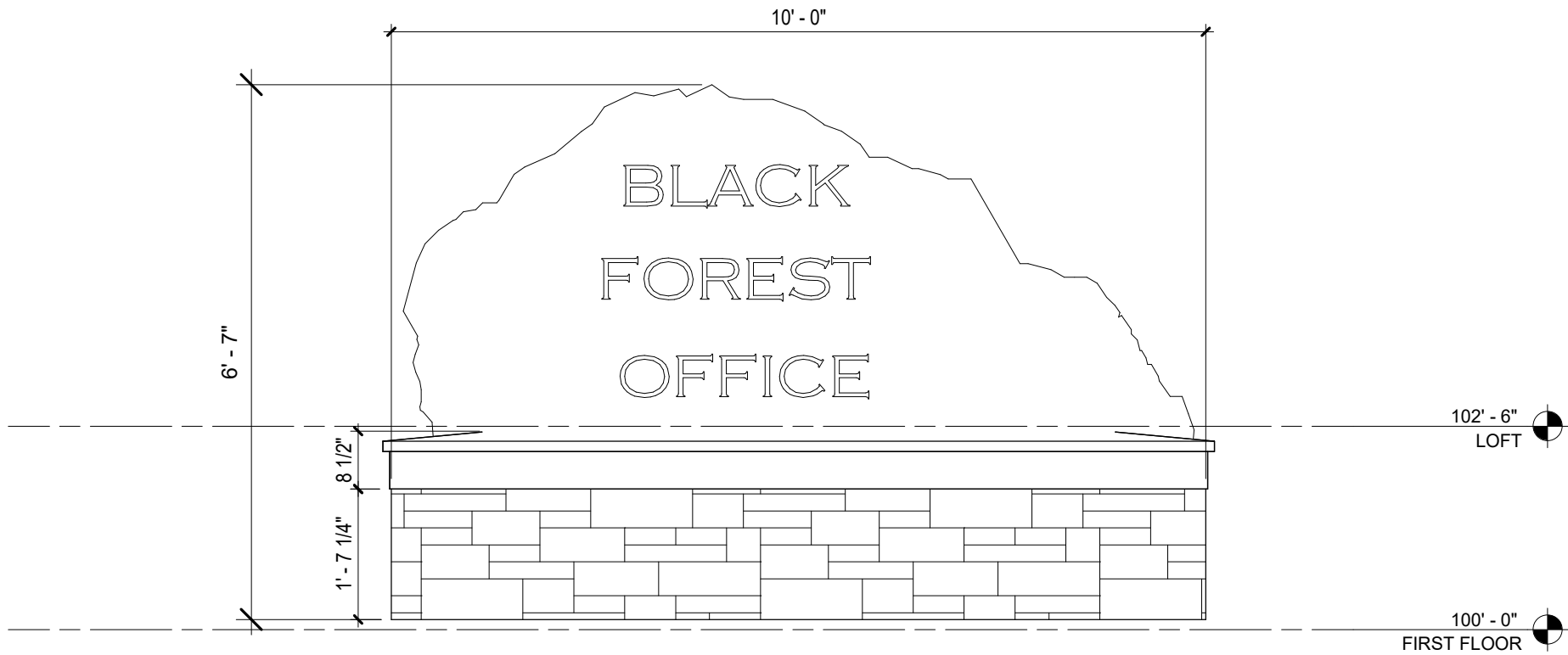
2 MONUMENT SIGN - SECTION 1
1/2" = 1'-0"



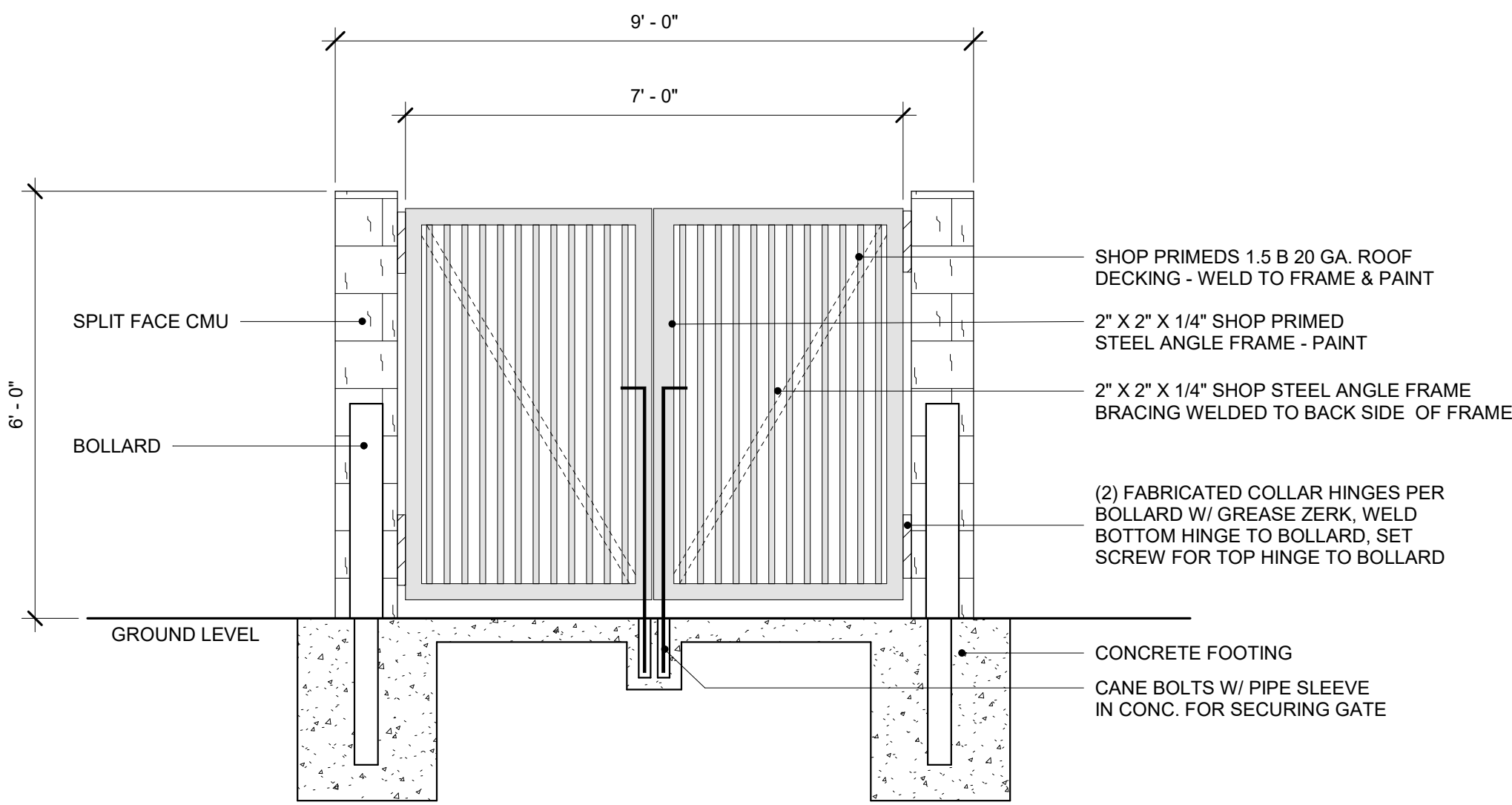
3 MONUMENT SIGN - ELEVATION 2
1/2" = 1'-0"



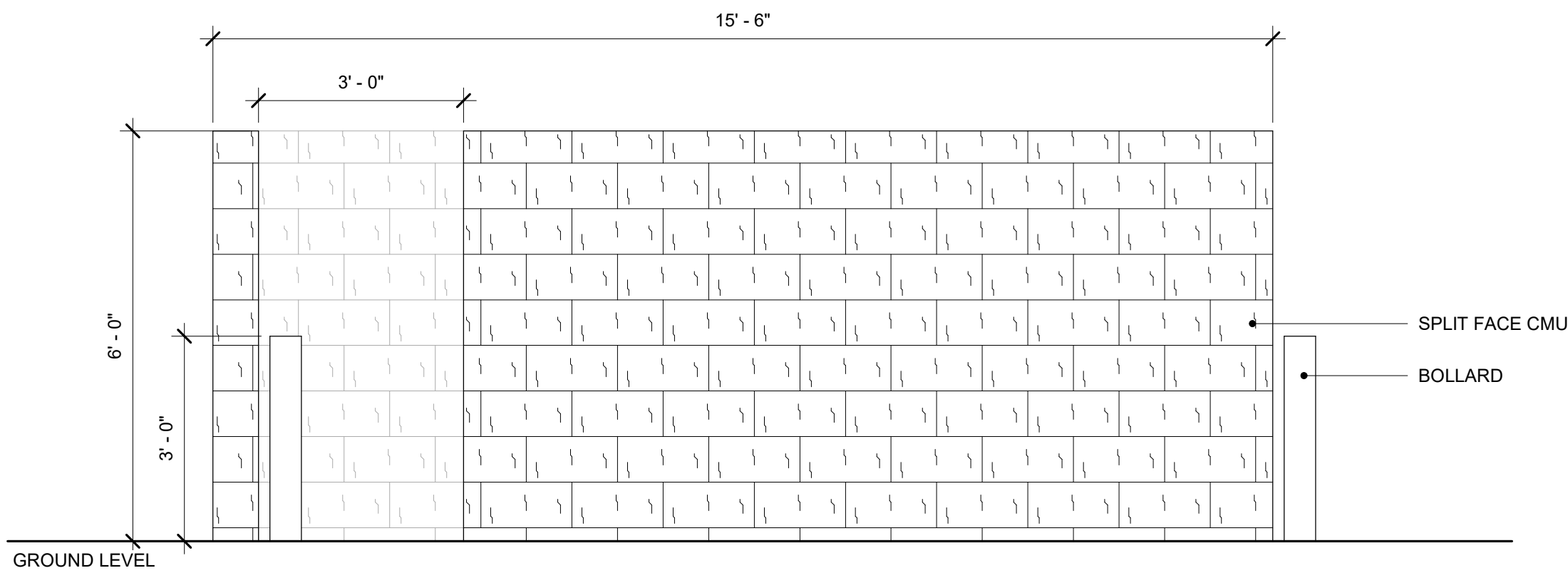
4 MONUMENT SIGN
1/2" = 1'-0"



5 MONUMENT SIGN - ELEVATION 1 - CD
1/2" = 1'-0"



6 TRASH ENCLOSURE FRONT ELEVATION
1/2" = 1'-0"



7 TRASH ENCLOSURE SIDE ELEVATION
1/2" = 1'-0"

SITE DETAILS

PROJECT NUMBER: SP0000-00
DATE PREPARED: 09-15-2020
PLANS PREPARED FOR:
BLACK FOREST, LLC
12740 BLACK FOREST RD.
COLORADO SPRINGS, CO 80908

SHEET
6 OF 10



Architects &
Planners, Inc.

4949 S. Syracuse St., Suite 320
Denver, CO 80237
voice 303.649.9880 fax 303.649.9870
pwnarchitects.com