

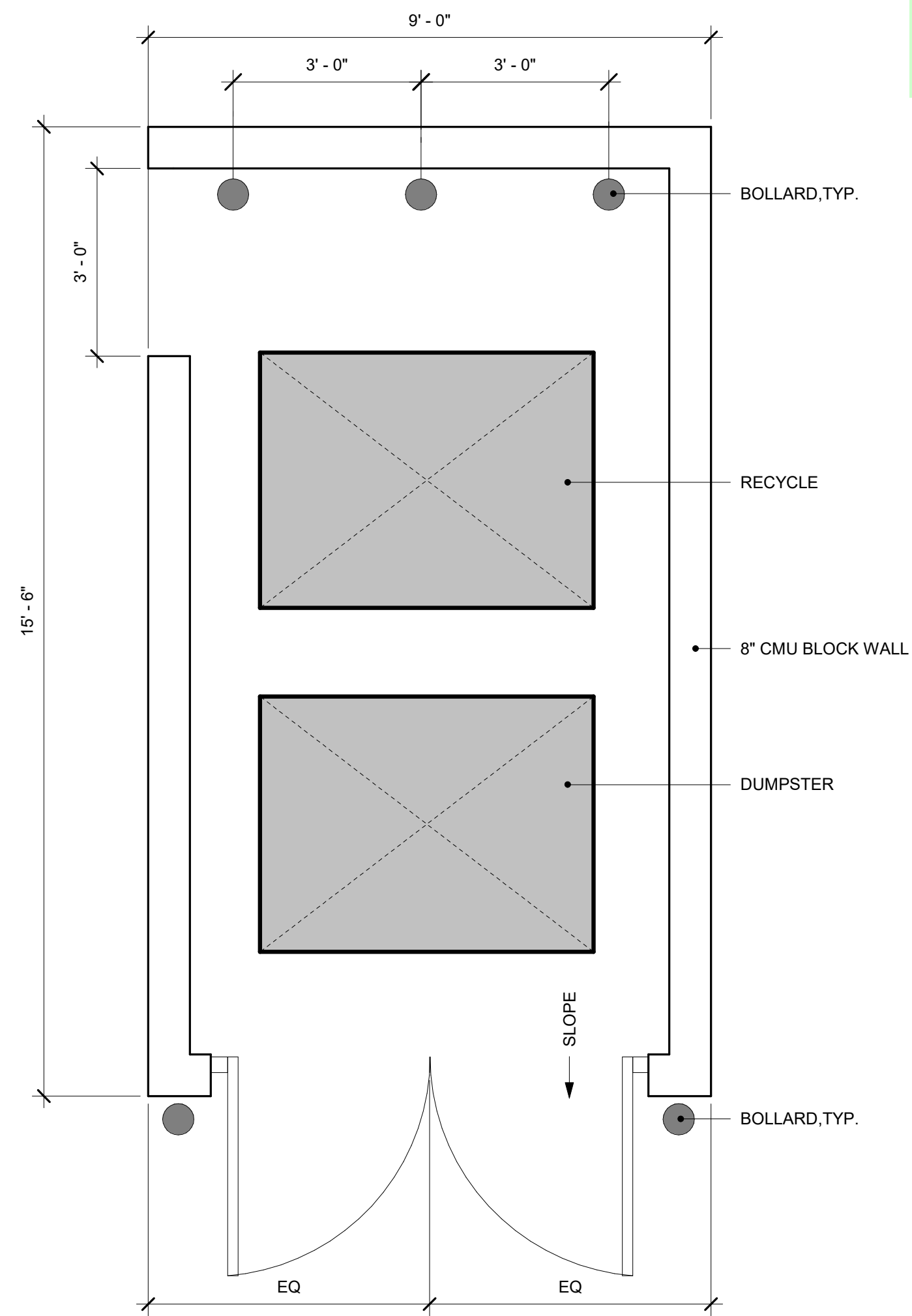
# SITE DEVELOPMENT PLAN

## BLACK FOREST OFFICE

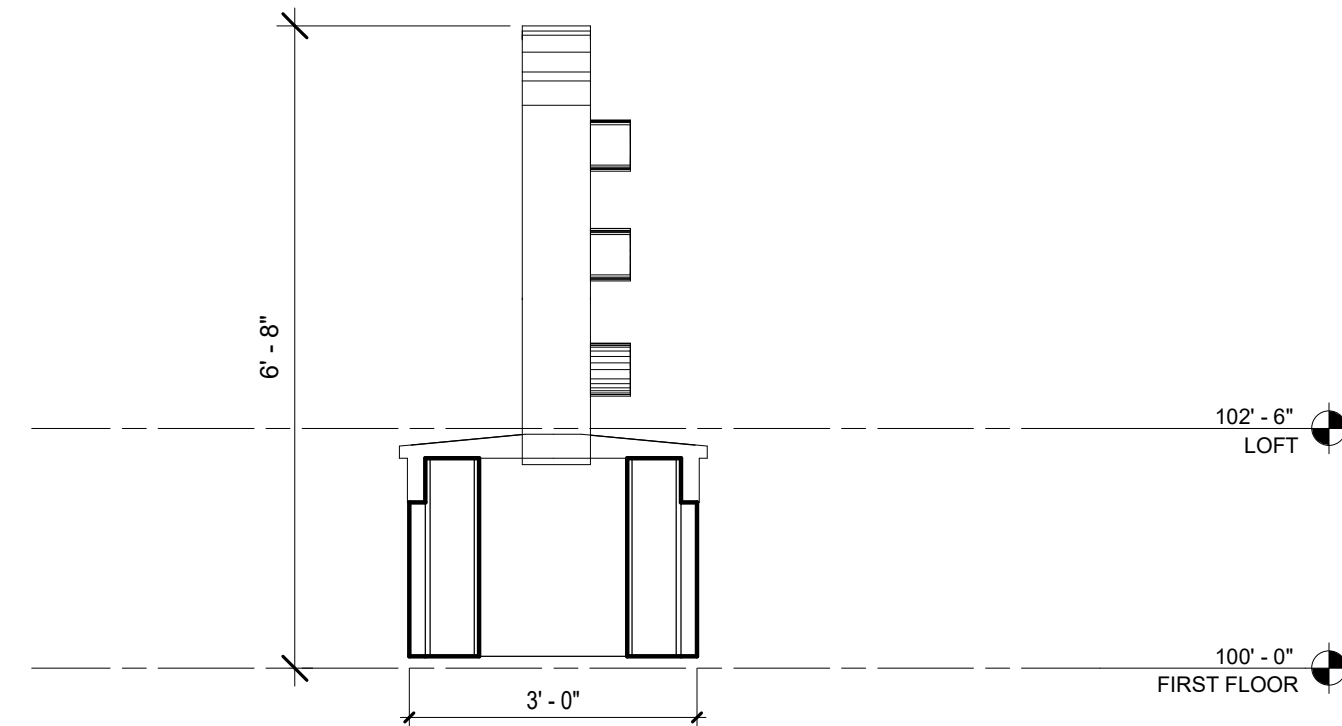
N1/2 NE1/4 SE1/4 SE1/4 OF SECTION 07, TOWNSHIP 12 SOUTH, RANGE 65 WEST OF THE 6TH P.M., EL PASO COUNTY, COLORADO

4.77 ACRES

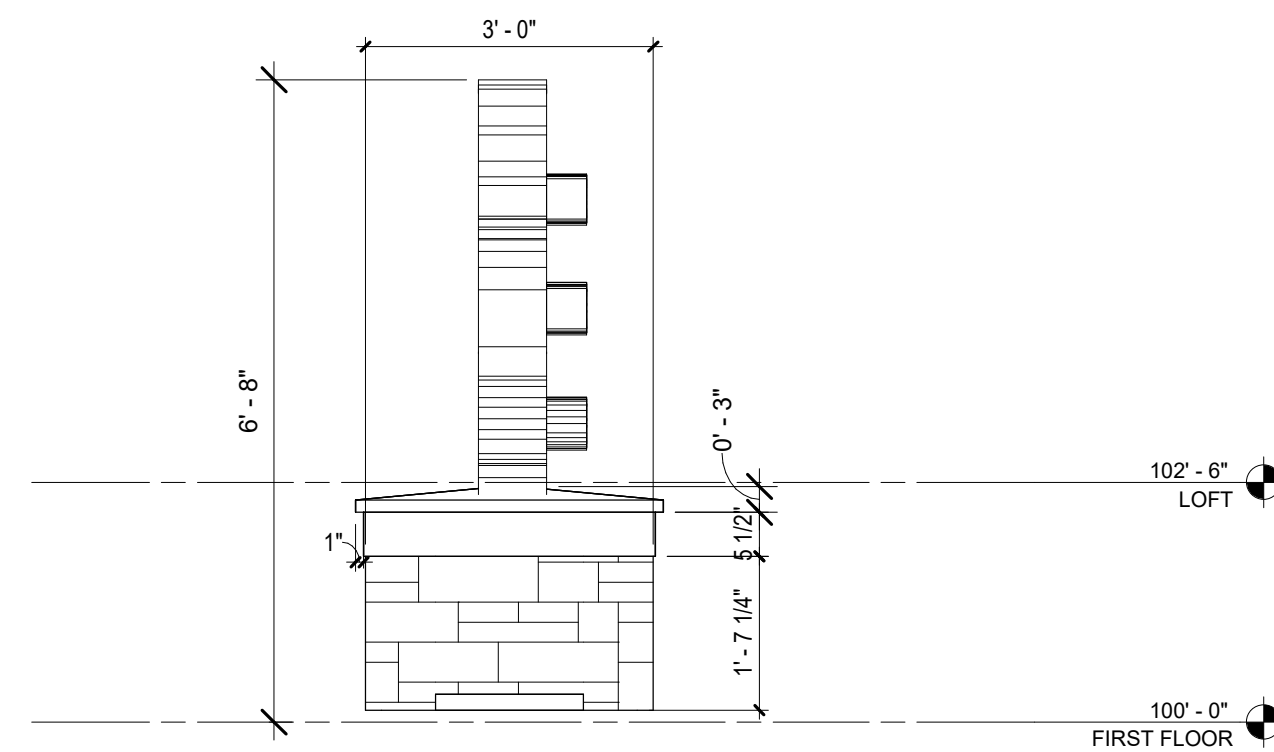
you will need to apply for a sign permit when it comes time to install the signs.



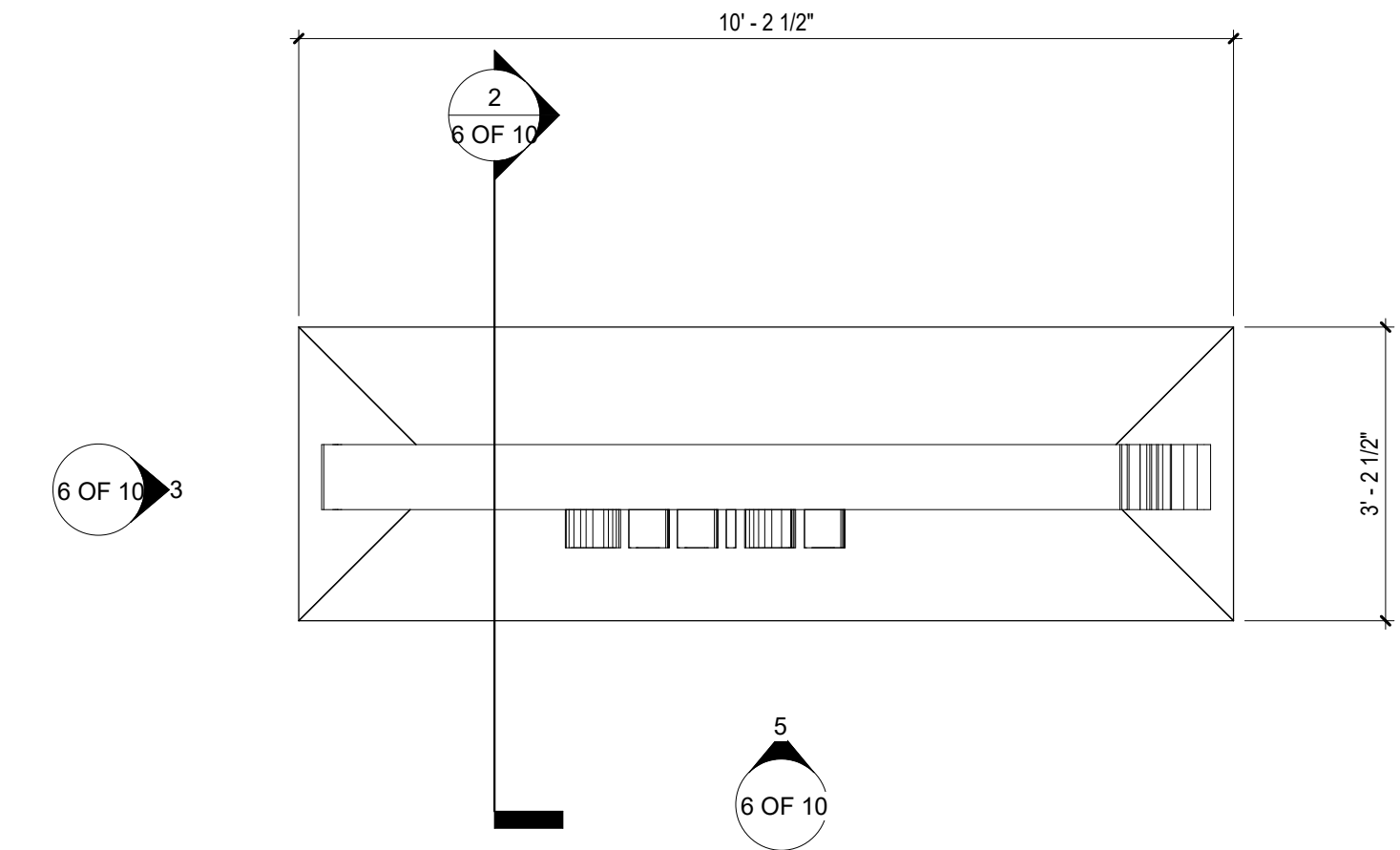
**1 TRASH ENCLOSURE**  
1/2" = 1'-0"



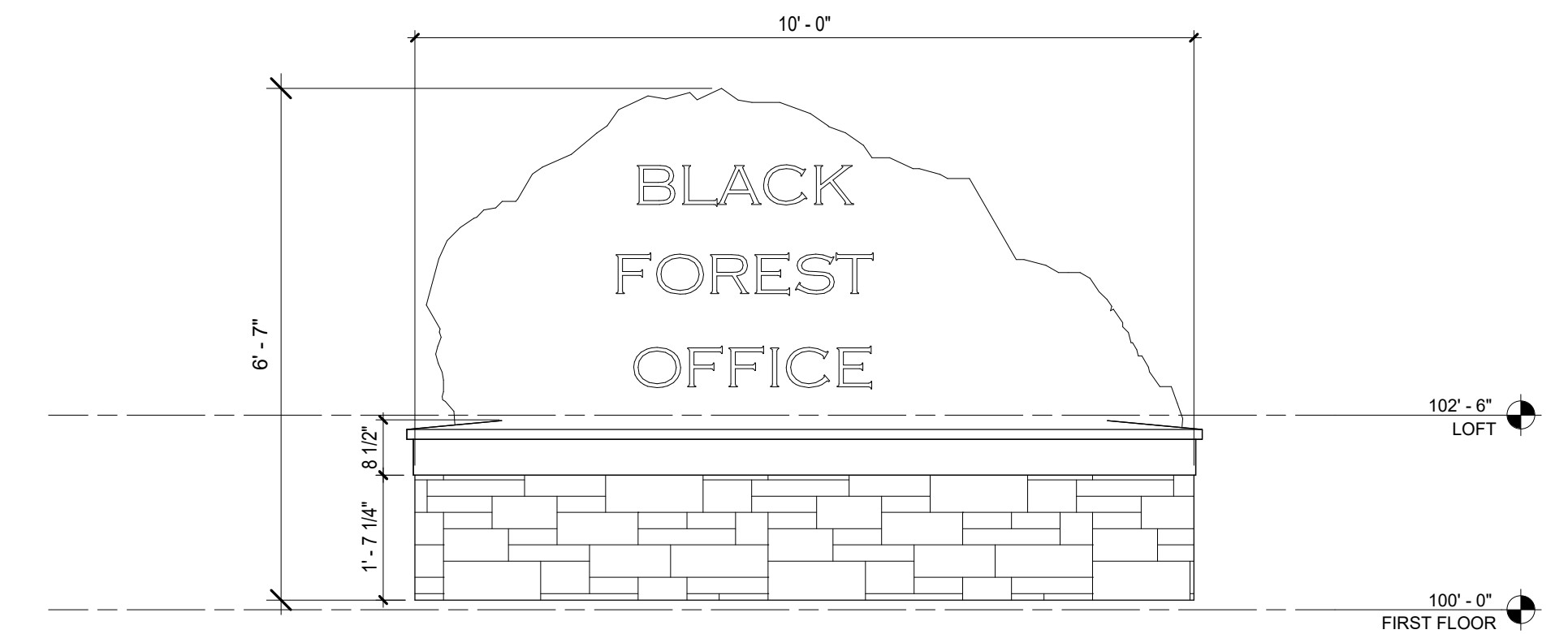
**2 MONUMENT SIGN - SECTION 1**  
1/2" = 1'-0"



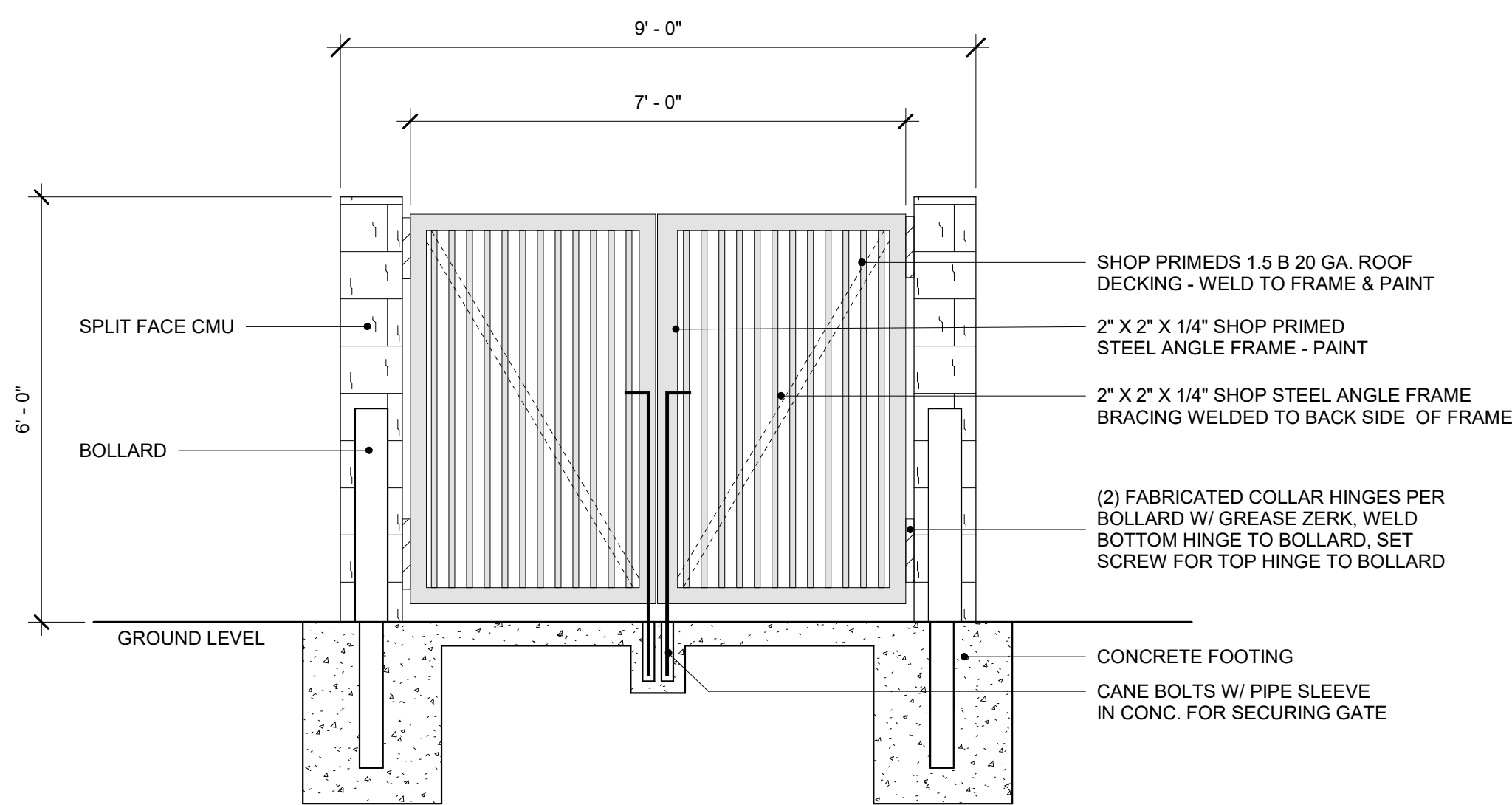
**3 MONUMENT SIGN - ELEVATION 2**  
1/2" = 1'-0"



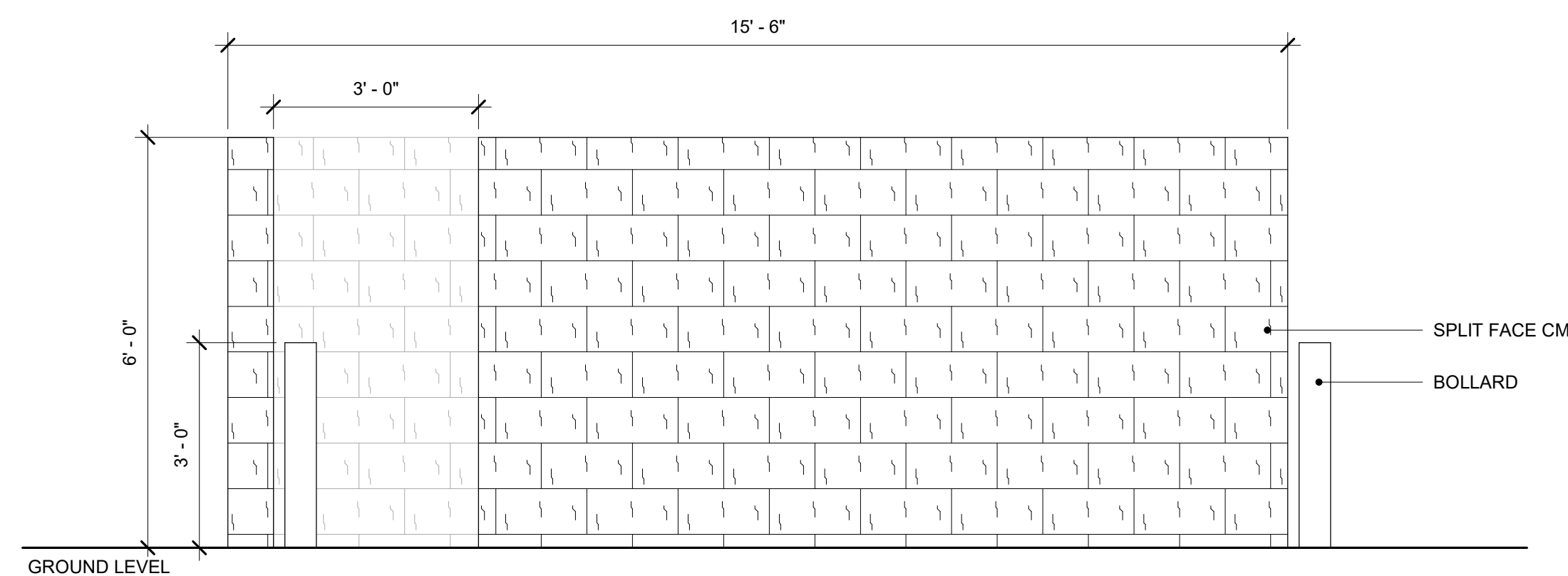
**4 MONUMENT SIGN**  
1/2" = 1'-0"



**5 MONUMENT SIGN - ELEVATION 1 - CD**  
1/2" = 1'-0"



**6 TRASH ENCLOSURE FRONT ELEVATION**  
1/2" = 1'-0"



**7 TRASH ENCLOSURE SIDE ELEVATION**  
1/2" = 1'-0"

SITE DETAILS

SHEET  
6 OF 10

**PWN**  
Architects &  
Planners, Inc.

PROJECT NUMBER: SP0000-00  
DATE PREPARED: 09-15-2020  
PLANS PREPARED FOR:  
**BLACK FOREST, LLC**  
12740 BLACK FOREST RD.  
COLORADO SPRINGS, CO 80908

4949 S. Syracuse St. | Suite 320  
Denver, CO 80237  
voice.303.649.9880 fax.303.649.9870  
pwnarchitects.com