

TOWER ELEVATION (PROPOSED)

SCALE: 3/32" = 1'-0" (11x17)

2

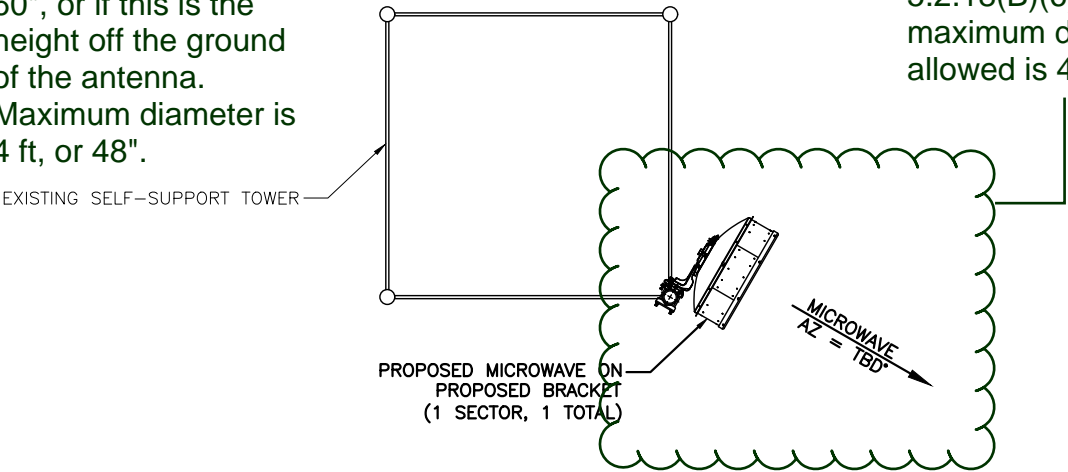
- NOTE:
1. REFER TO ANTENNA SCHEDULE FOR ADDITIONAL INFO.
 2. ADJUST MOUNTS AS REQUIRED TO ACHIEVE THE AZIMUTHS SPECIFIED AND LIMIT RF SHADING.
 3. CONTRACTOR TO FIELD VERIFY TOWER DIAMETER PRIOR TO ORDERING MOUNTS.
 4. ANTENNA MOUNT BRACKET TO BE BASED UPON EXISTING CONDITIONS OF TOWER AT PROPOSED ATTACHMENT HEIGHT. BRACKET TO BE VERIFIED TO BE WITHIN DESIGN CRITERIA OF STRUCTURAL ANALYSIS BY OTHERS. ALL DETAILS OF ATTACHMENT OF BRACKET TO TOWER AND ANTENNAS TO BRACKET TO BE OBTAINED FROM MANUFACTURER OF BRACKET. ANTENNA MOUNT BRACKET TO BE DETERMINED BY CONTRACTOR AT TIME OF BID.

POWDER RIVER ENGINEERING SERVICES HAS NOT PERFORMED STRUCTURAL ANALYSES FOR THE NEW EQUIPMENT MOUNTS, NOR THE SUPPORTING STRUCTURE, AND ASSUMES NO RESPONSIBILITY FOR ITS ABILITY TO SUPPORT THE PROPOSED MODIFICATIONS. PRIOR TO CONSTRUCTION, STRUCTURAL ANALYSIS (BY OTHERS) SHALL BE PERFORMED FOR ALL TOWERS, ROOFTOPS, FLAGPOLES, LIGHT POLES AND ASSOCIATED EQUIPMENT MOUNTS.

PROPOSED MICROWAVE SCHEDULE							
MFG	PROPOSED MICROWAVE TYPE	# PER SECTOR	RAD CENTER	MECH DOWNTILT	AZIMUTH	(P) HYBRID CABLE	LENGTH
COMMScope	VHLP3-11W	1	60'	0°	TBD	(1) 1/2" HYBRIDS	80'
.
.
.

Unclear whether this is the proposed radius for the microwave antenna and it should read 60", or if this is the height off the ground of the antenna. Maximum diameter is 4 ft, or 48".

Specify size of microwave antenna. Per LDC 5.2.18(B)(6)(e)(vii), maximum diameter allowed is 4 ft.



- NOTE:
- ORIENT MOUNTS TO PROVIDE ADEQUATE SEPARATION BETWEEN ANTENNAS AND TO AVOID CAUSING RF INTERFERENCE. (MOUNT AZIMUTHS ARE SHOWN FOR REFERENCE ONLY)



ANTENNA PLAN (PROPOSED)

SCALE: 3/32" = 1'-0" (11x17)

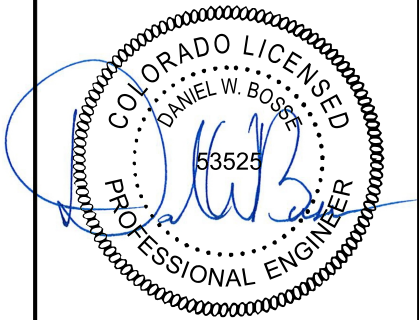
1



POWDER RIVER
ENGINEERING SERVICES, LLC

BUSINESS LICENSE #: N/A

REVISIONS			
REV	DATE	DESCRIPTION	INT
2	12/13/18	REVISIONS	JED
1	09/26/18	REVISIONS	JED
0	09/11/18	100% CONSTRUCTION	JED
C	09/06/18	ISSUED FOR REVIEW 90%	JED
B	08/08/18	ISSUED FOR REVIEW 90%	JED
A	06/11/18	ISSUED FOR REVIEW 90%	JHT



THESE PLANS AND SPECIFICATIONS, AS INSTRUMENTS OF SERVICE, ARE AND SHALL REMAIN THE PROPERTY OF POWDER RIVER DEVELOPMENT SERVICES, LLC WHETHER THE PROJECTS FOR WHICH THEY ARE MADE ARE EXECUTED OR NOT. THESE DRAWINGS AND SPECIFICATIONS SHALL NOT BE USED BY ANY PERSON OR ENTITY ON OTHER PROJECTS WITHOUT PRIOR WRITTEN CONSENT OF THE ENGINEER.

SITE INFORMATION:

SITE #: CO100A-MWB

FCC #: 1208834

5.6K WEST OF CALHAN
CALHAN, CO
80808
EL PASO COUNTY

SHEET TITLE:
**ELEVATION
& ANTENNA LAYOUT**

SHEET NUMBER:

C-2