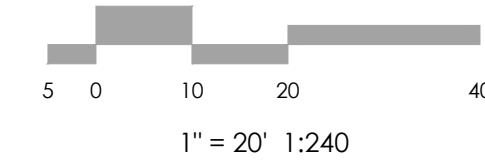
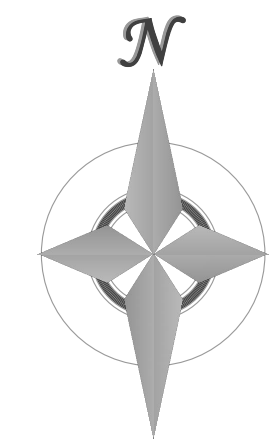


VICINITY MAP  
NOT TO SCALE

BENCHMARK



**MVE, INC.**  
ENGINEERS & SURVEYORS

1903 Leary Street, Suite 200 Colorado Springs, CO 80909 719.635.5736

REVISIONS



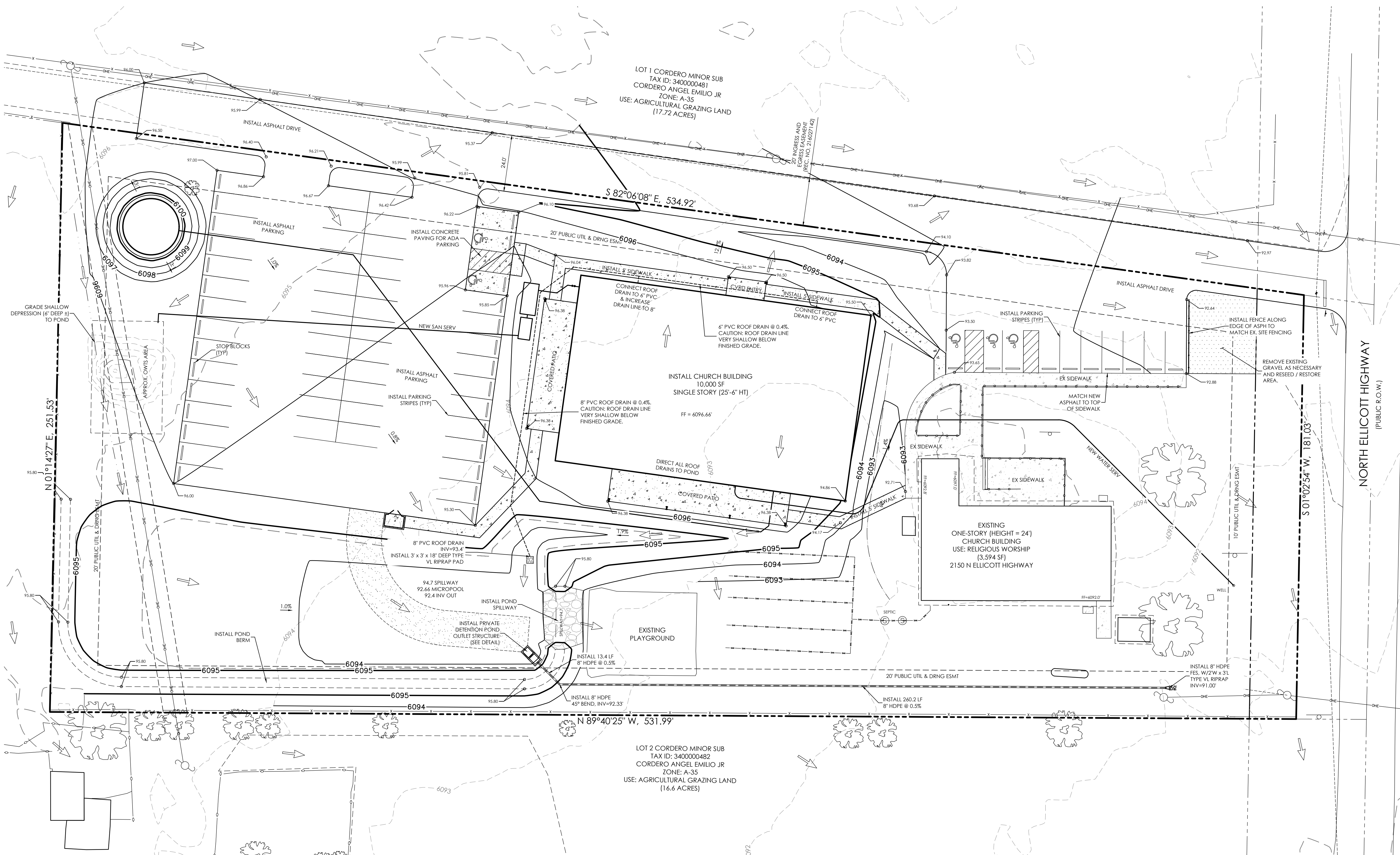
DESIGNED BY \_\_\_\_\_  
DRAWN BY \_\_\_\_\_  
CHECKED BY \_\_\_\_\_  
AS-BUILTS BY \_\_\_\_\_  
CHECKED BY \_\_\_\_\_

ROCKY MOUNTAIN CALVARY  
CHAPEL - ELLICOTT

**GRADING & EROSION CONTROL PLAN**  
**GRADING PLAN**

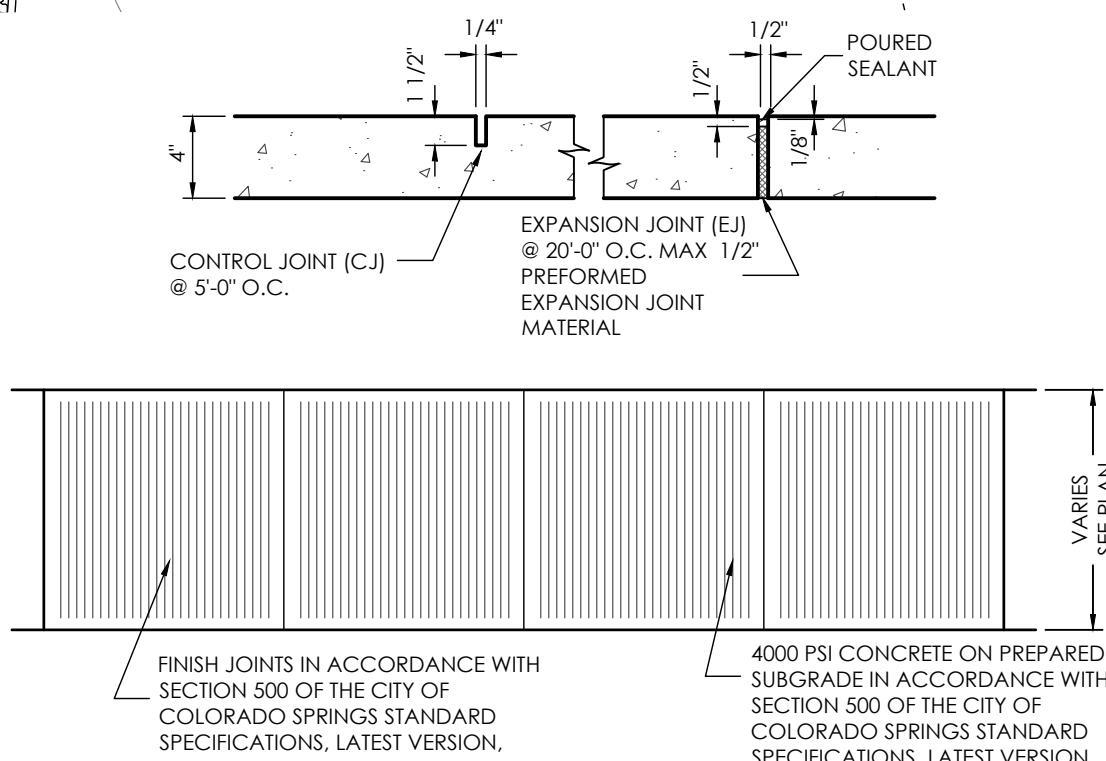
**C1.2** MVE PROJECT 61182  
MVE DRAWING GEC-GP

**APRIL 4, 2025**  
**SHEET 2 OF 6**

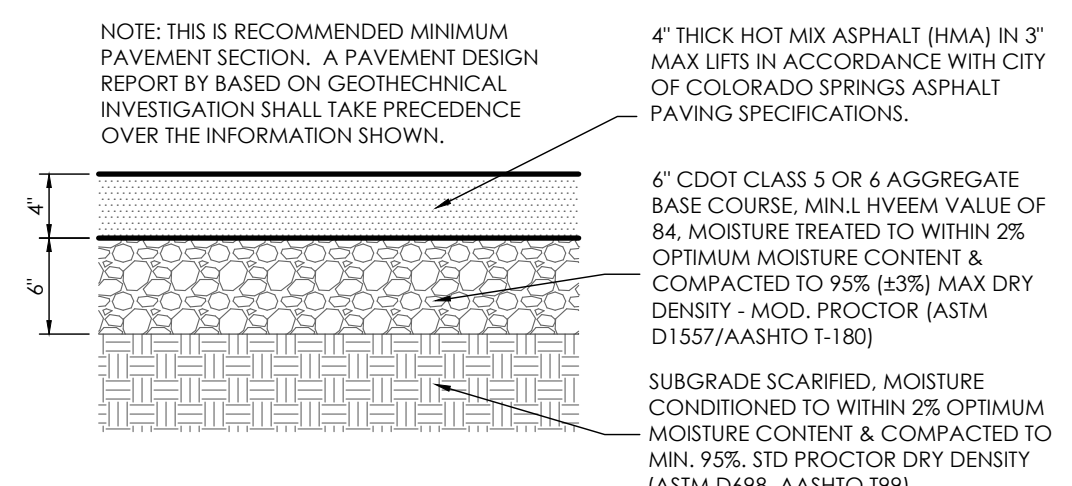


**MAP NOTES**

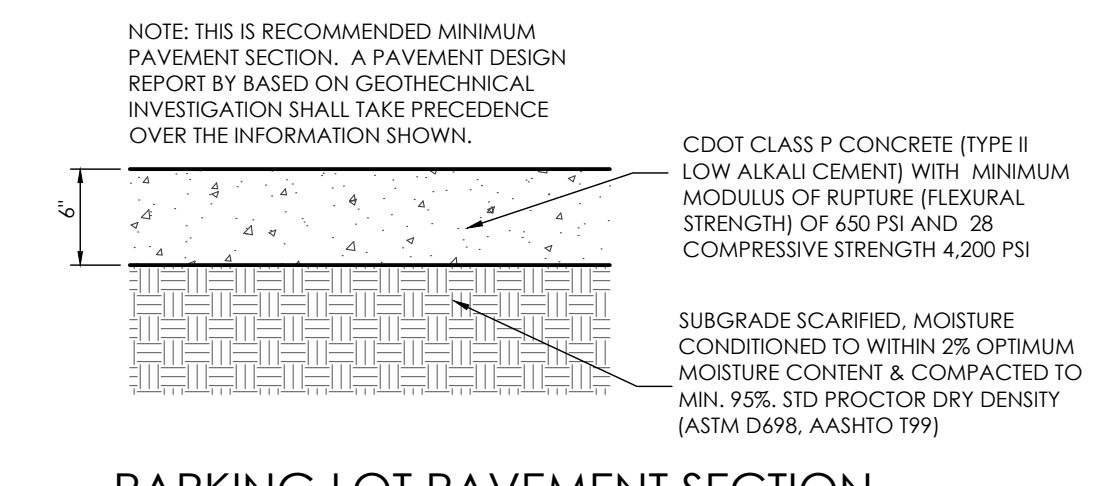
- BOUNDARY BEARINGS AND DISTANCES SHOWN ON THIS MAP ARE RELATIVE TO THE NORTH PROPERTY LINE BEARING S 82°06'08\"/>



TYPICAL SIDEWALK DETAIL  
SCALE 1" = 4'

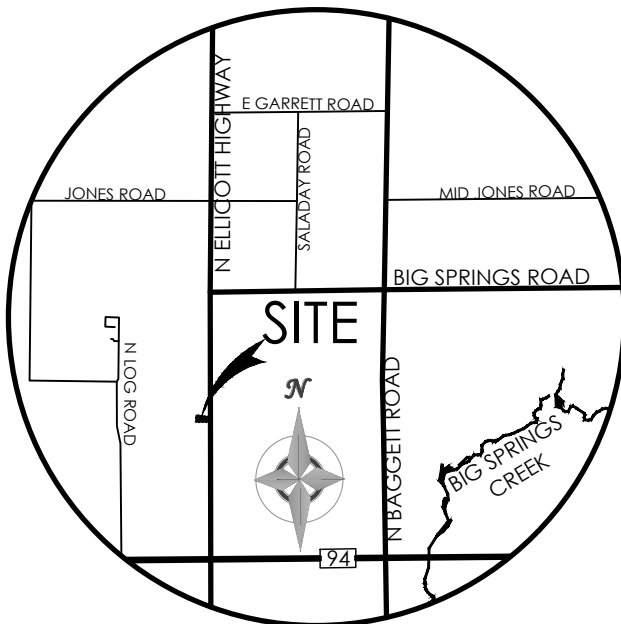
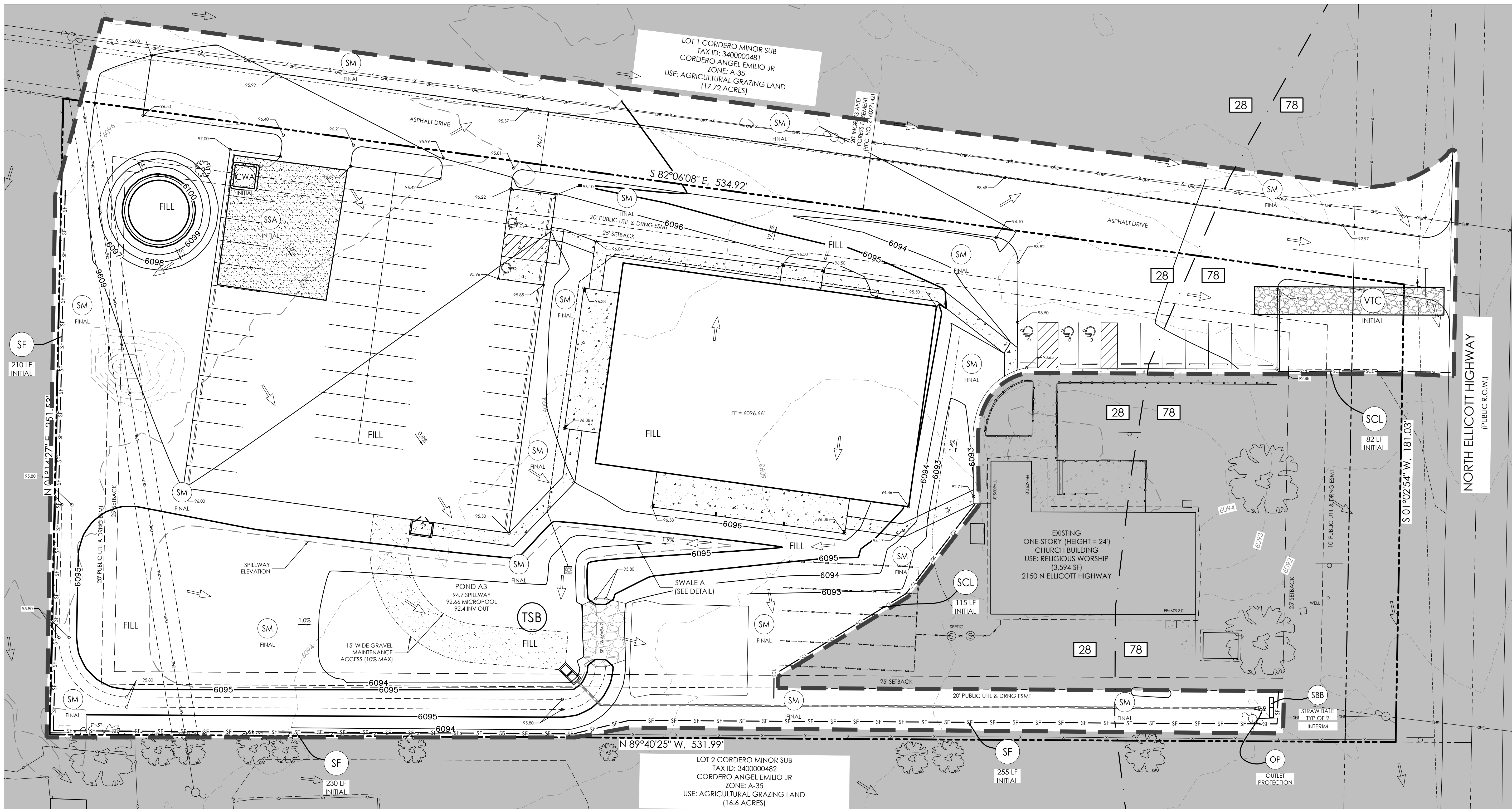


PARKING LOT PAVEMENT SECTION  
SCALE 1" = 1.0'

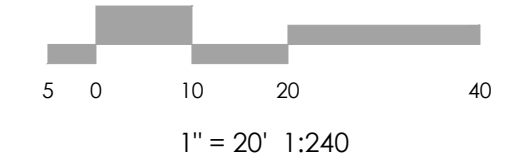
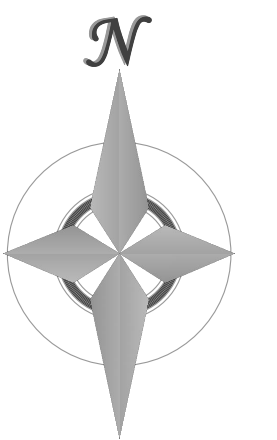


PARKING LOT PAVEMENT SECTION  
(CONCRETE)  
SCALE 1" = 1.0'





VICINITY MAP  
NOT TO SCALE



**MVE, INC.**  
ENGINEERS & SURVEYORS

1903 Library Street, Suite 200, Colorado Springs, CO 80909 719.635.5736

REVISIONS



DESIGNED BY  
DRAWN BY  
CHECKED BY  
AS-BUILTS BY  
CHECKED BY

ROCKY MOUNTAIN CALVARY  
CHAPEL - ELLICOTT

GRADING & EROSION  
CONTROL PLAN  
EROSION CONTROL

C1.4 MVE PROJECT 61182  
MVE DRAWING GEC-EC

APRIL 4, 2025  
SHEET 4 OF 6

CM LEGEND

MAP SYMBOL	KEY	DESCRIPTION
<b>INITIAL CMs</b>		
	SSA	STABILIZED STAGING AREA (Initial CM)
	SCL	SEDIMENT CONTROL LOG (Initial/INTERIM CM)
	VTC	VEHICLE TRACKING CONTROL (Initial CM)
	CD	CHECK DAM (Initial CM)
	SF	SILT FENCE (Initial CM)
	TSB	TEMPORARY SEDIMENT BASIN (INITIAL CM)
	SSB	STRAW BALE BARRIER (INITIAL CM)
	CWA	CONCRETE WASHOUT AREA (INITIAL CM)
<b>INTERIM/FINAL CMs</b>		
	OP	OUTLET PROTECTION (RIP-RAP) (INTERIM/FINAL CM)
	CIP	CULVERT INLET PROTECTION (INTERIM CM)
	SM	SEEDING & MULCHING (FINAL CM)
	1.50%	SLOPE DIRECTION AND GRADE
	CUT/FILL	CUT/FILL BOUNDARY
		DRAINAGE FLOW ARROW
		LIMITS OF DISTURBANCE/ LIMITS OF CONSTRUCTION
		LIMITS OF DISTURBANCE LINE
		SOILTYPE BOUNDARY

OTHER DATA

**LAT/LONG COORDS:** 38°51'40.82" / 104°23'18.46"

**VEGETATION:** EXISTING: NATIVE PRAIRIE GRASSES & WEEDS, PROPOSED: RESEEDING DISTURBED AREAS

**BATCH PLANTS:** NONE

**DEWATERING:** NONE

**DISTURBED AREA:** 2.5± ACRES

**RECEIVING WATERS:** BLACK SQUIRREL CREEK

**SCHEDULE:** SUMMER 2025 - FALL 2025  
FINAL STABILIZATION SPRING 2026

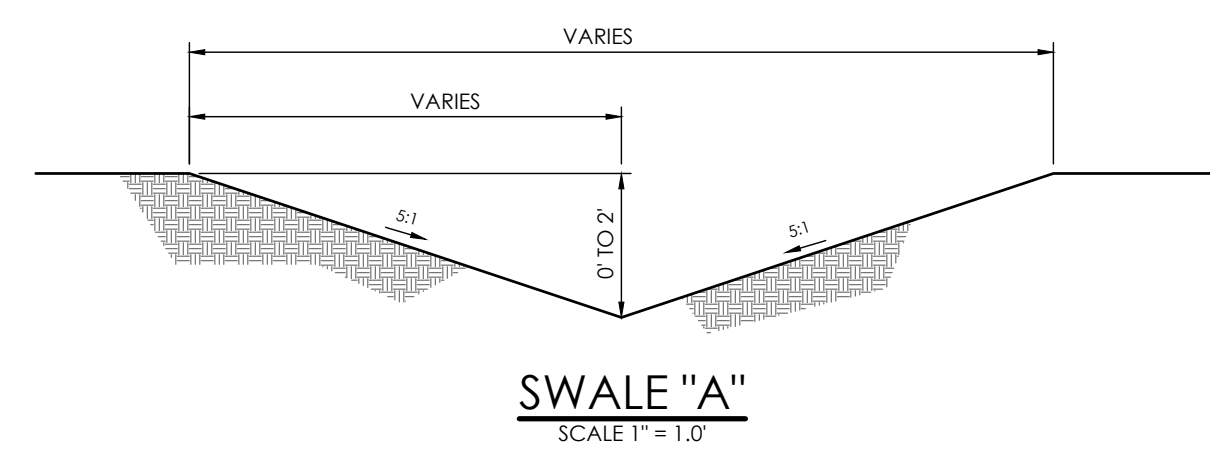
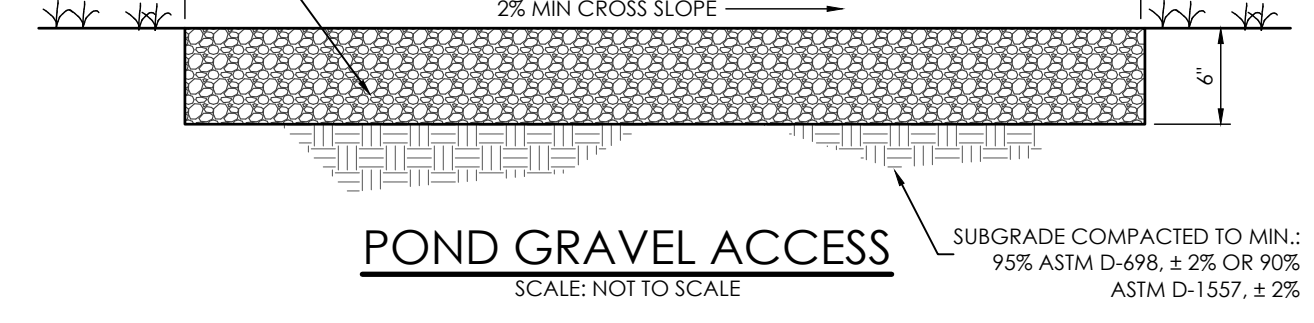
HYDROLOGIC SOIL GROUP

MAP UNIT NUMBER	DESCRIPTION
28	ELLICOTT LOAMY COARSE SAND, 0 TO 5% SLOPES
78	SAMPSON LOAM, 0 TO 3% SLOPES

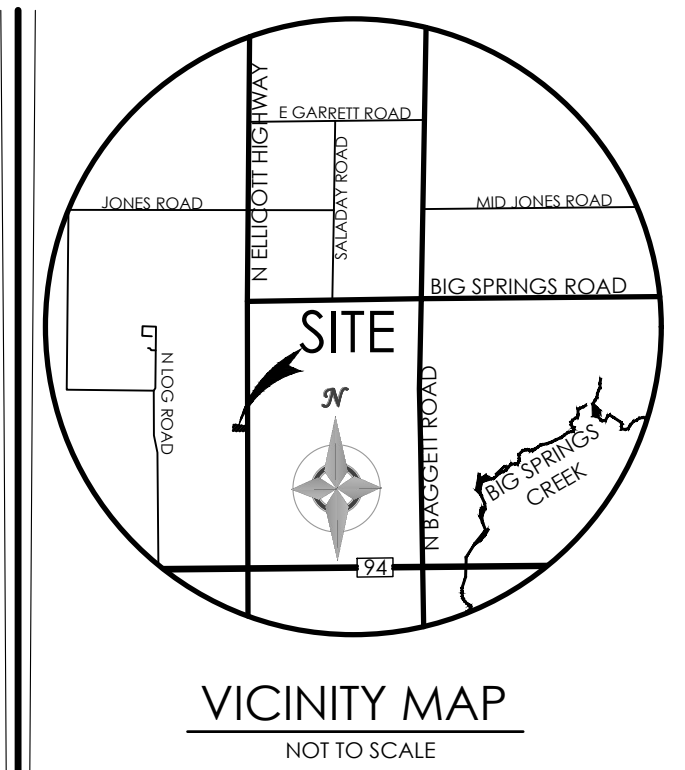
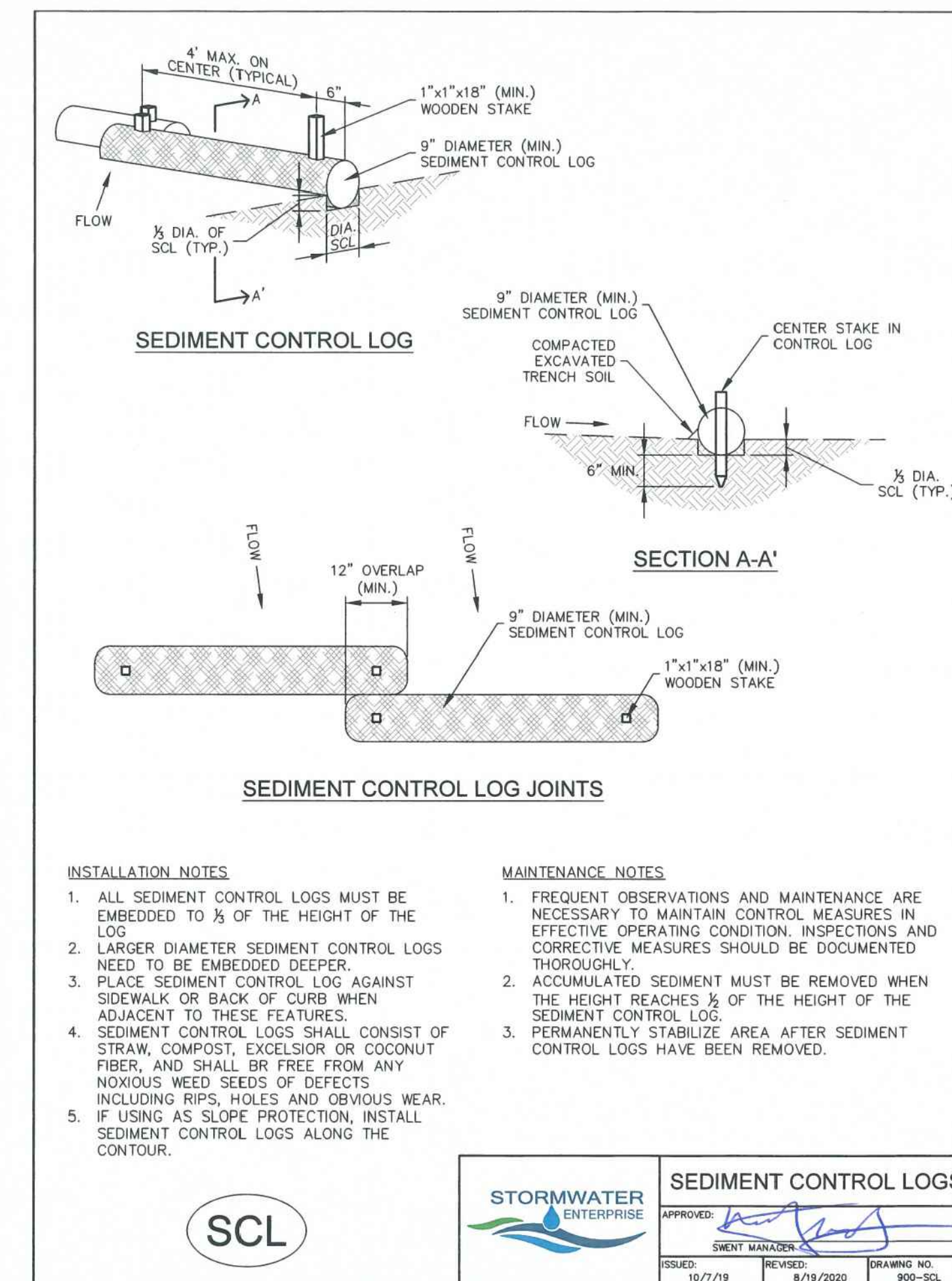
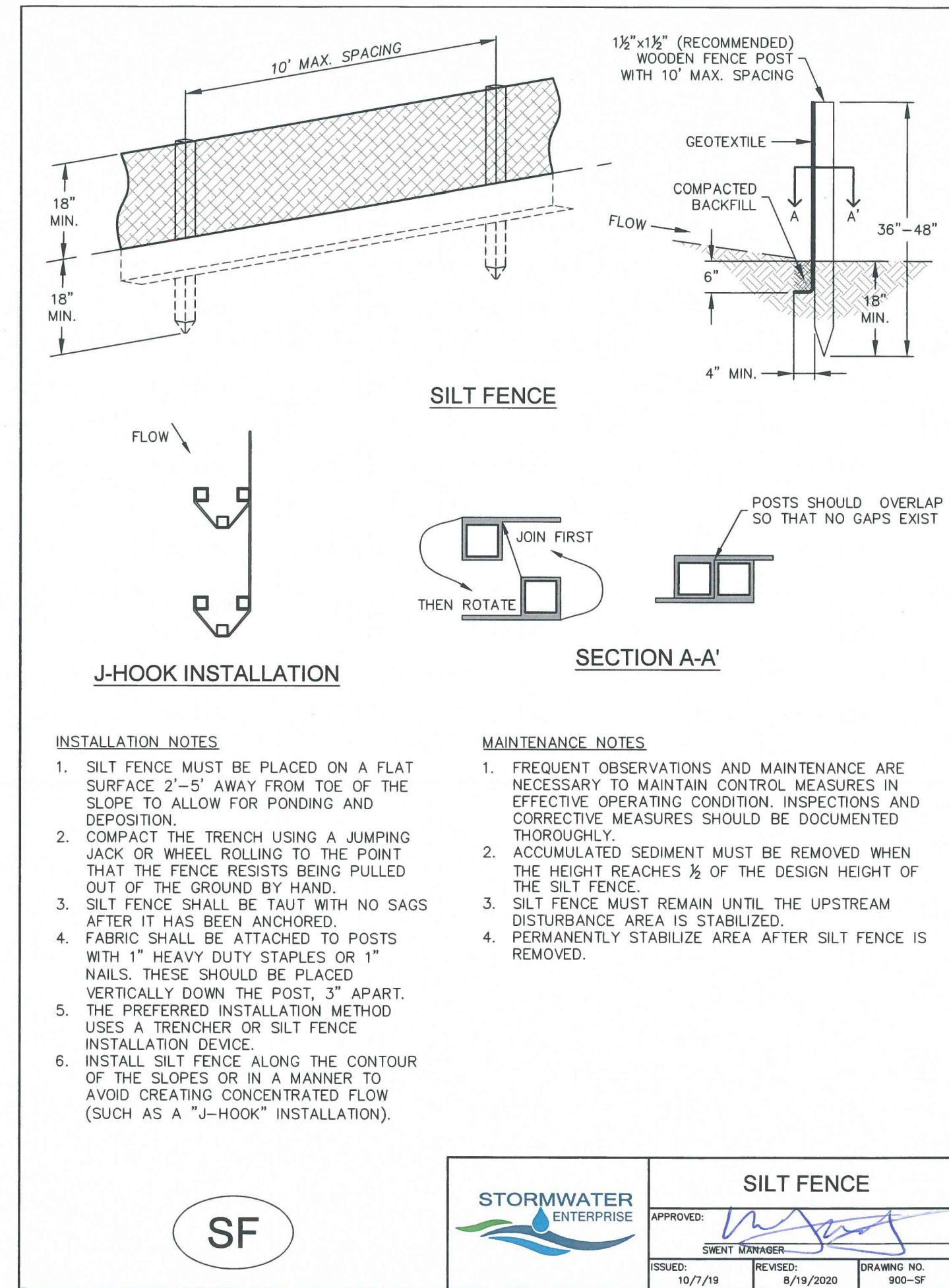
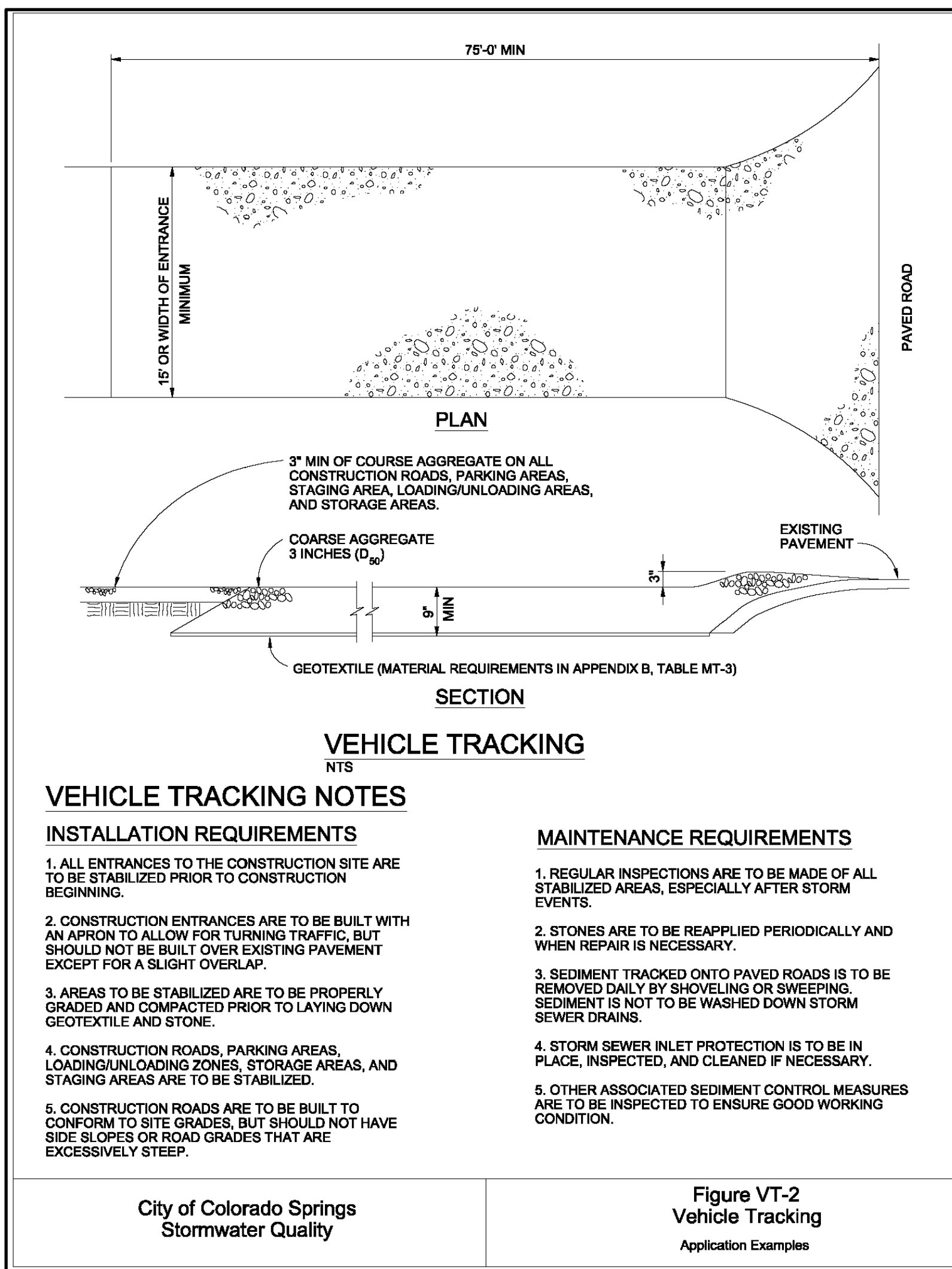
SOIL DATA

PRIMARY SOIL DESCRIPTION	PERMEABILITY	SURFACE RUNOFF	HAZARD OF EROSION	HYDROLOGIC SOIL GROUP
ELLICOTT LOAMY COARSE SAND, 0 TO 5% SLOPES	RAPID	SLOW	HIGH	A
SAMPSON LOAM, 0 TO 3% SLOPES	MODERATE	SLOW	SLIGHT	B

TYPE 6 CLASS 6 BASE COURSE COMPACTED TO COMPACTED TO 95% (±3%) MAX DRY DENSITY - MOD. PROCTOR (ASTM D1557/AASHTO T-180) ± 2%



SYMBOLS SHOWN IN LEGEND SHALL BE USED BY SWMP ADMINISTRATOR TO ANNOTATE ANY CHANGES AND/OR ADDITIONS TO THIS PLAN.



BENCHMARK



REVISIONS

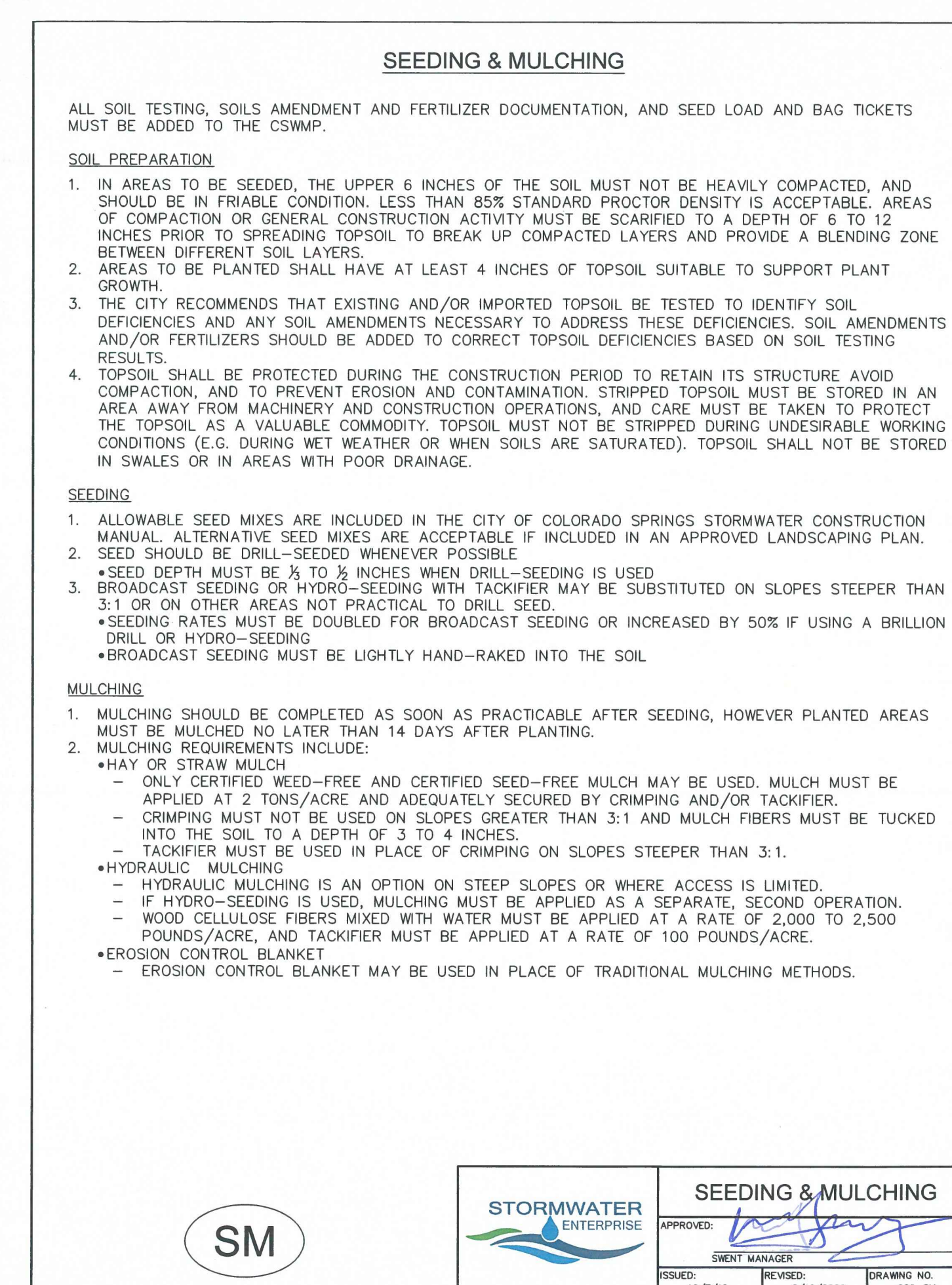
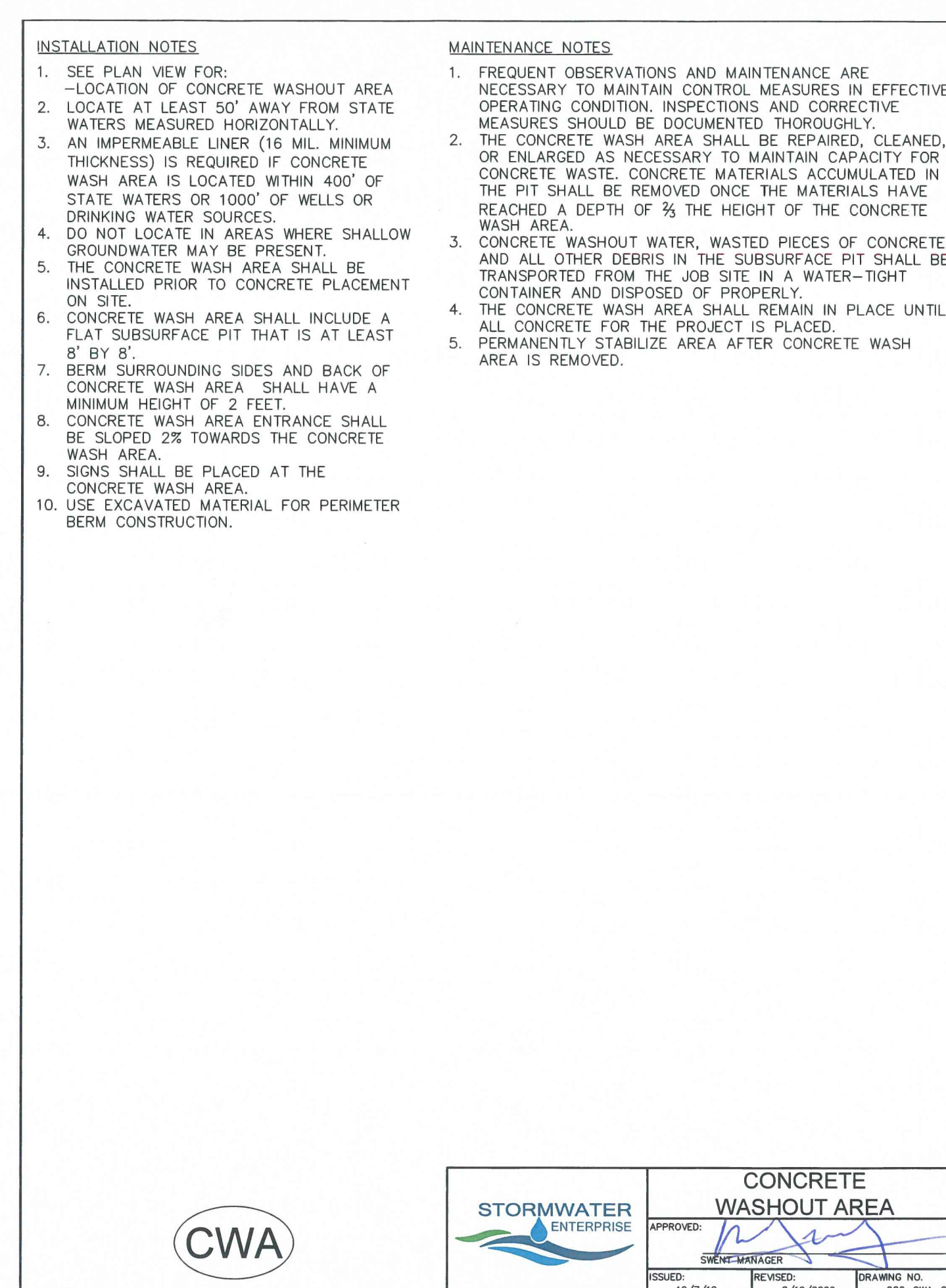
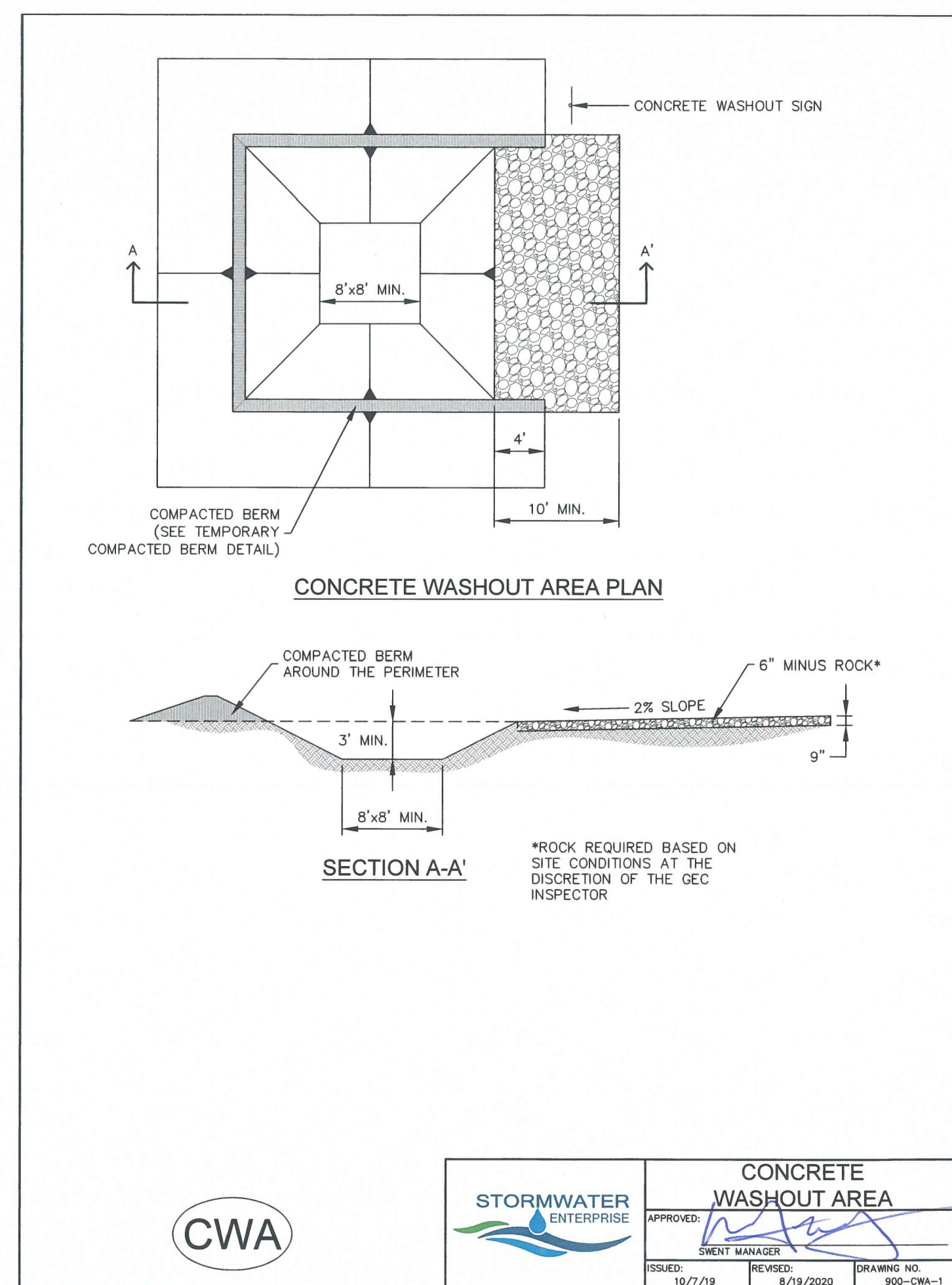
DESIGNED BY \_\_\_\_\_  
DRAWN BY \_\_\_\_\_  
CHECKED BY \_\_\_\_\_  
AS-BUILTS BY \_\_\_\_\_  
CHECKED BY \_\_\_\_\_

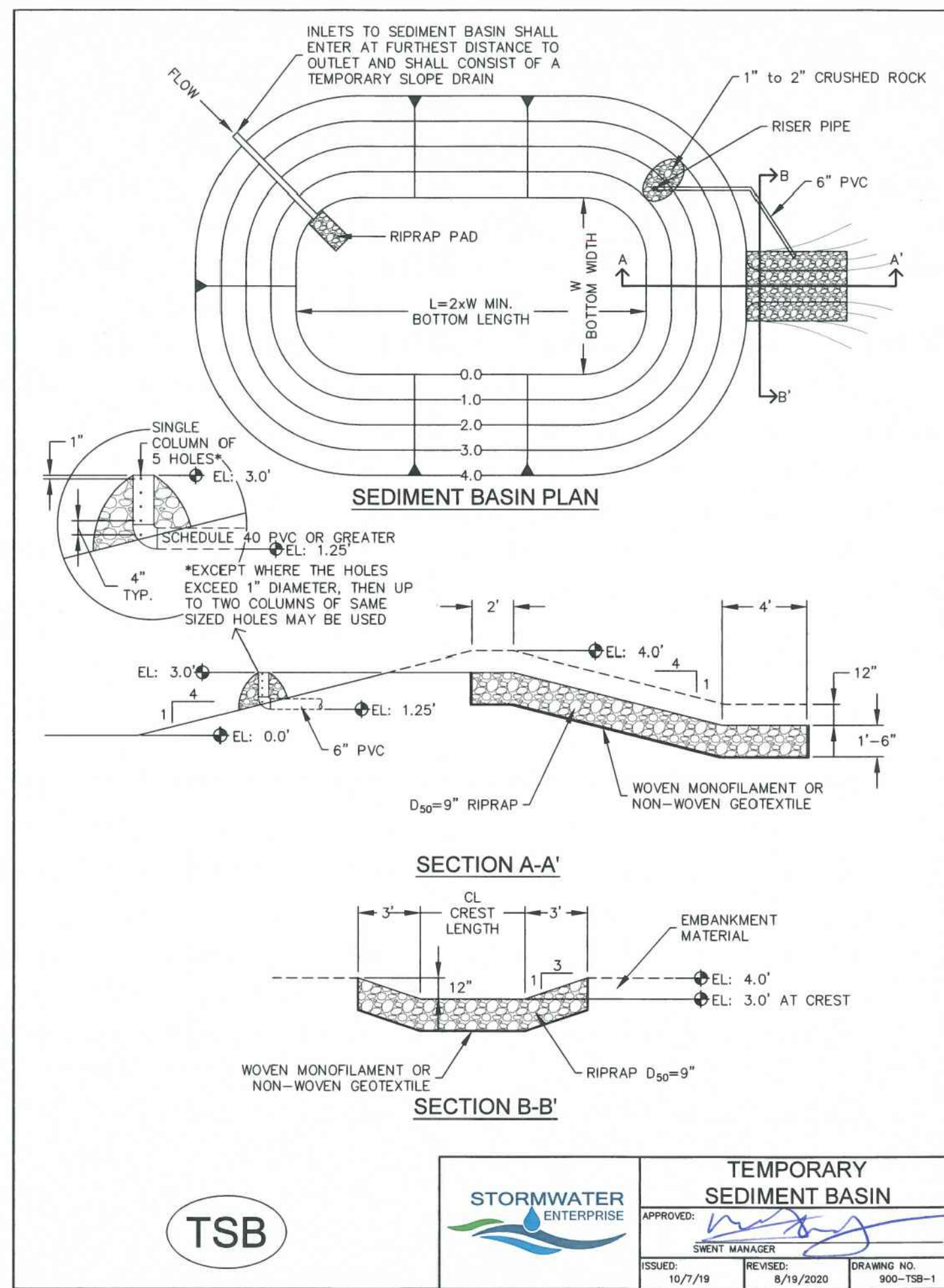
ROCKY MOUNTAIN LIMITED  
CHAPEL - ELLICOTT

GRADING & EROSION  
CONTROL PLAN  
EROSION CONTROL DET

C1.5 MVE PROJECT 61182  
MVE DRAWING GEC-ED

APRIL 4, 2025  
SHEET 5 OF 6





**TABLE SB-1, SIZING INFORMATION FOR STANDARD SEDIMENT BASIN**

UPSTREAM DRAINAGE AREA (ROUNDED TO NEAREST ACRE), (AC)	Basin Bottom Width (W), (FT)	Spillway Crest Length (CL), (FT)	Hole Diameter (HD), (IN)
1	12 1/2	2	3/2
2	21	3	1 1/8
3	28	5	1 1/2
4	33 1/2	6	1 5/8
5	38 1/2	8	1 3/4
6	43	9	1 7/8
7	47 1/2	11	2 1/8
8	51	12	2 1/4
9	55	13	2 1/2
10	58 1/2	15	2 3/4
11	61	16	2 7/8
12	64	18	3
13	67 1/2	19	1 1/2
14	70 1/2	21	1 3/4
15	73 1/2	22	1 7/8

**INSTALLATION NOTES**

- FOR STANDARD BASIN, BOTTOM DIMENSION MAY BE MODIFIED AS LONG AS BOTTOM AREA IS NOT REDUCED.
- EMBANKMENT MATERIAL SHALL CONSIST OF SOIL FREE OF DEBRIS, ORGANIC MATERIAL, AND ROCKS OR CONCRETE GREATER THAN 3 INCHES, AND SHALL HAVE A MINIMUM OF 15 PERCENT BY WEIGHT PASSING THE No. 200 SIEVE.
- EMBANKMENT MATERIAL SHALL BE COMPACTED TO AT LEAST 95 PERCENT OF MAXIMUM DENSITY IN ACCORDANCE WITH ASTM D-698.
- PIPE SCHEDULE 40 OR GREATER SHALL BE USED.
- THE DETAILS SHOWN ON THESE SHEETS PERTAIN TO STANDARD SEDIMENT BASIN(S) FOR DRAINAGE AREAS LESS THAN 15 ACRES. SEE CONSTRUCTION DRAWINGS FOR EMBANKMENT, STORAGE VOLUME, SPILLWAY, OUTLET, AND OUTLET PROTECTION DETAILS FOR ANY SEDIMENT BASIN(S) THAT HAVE BEEN INDIVIDUALLY DESIGNED FOR DRAINAGE AREAS LARGER THAN 15 ACRES. DESIGN CALCULATIONS MUST BE APPROVED PRIOR TO IMPLEMENTATION.

**MAINTENANCE NOTES**

- FREQUENT OBSERVATIONS AND MAINTENANCE ARE NECESSARY TO MAINTAIN CONTROL MEASURES IN EFFECTIVE OPERATING CONDITION. INSPECTIONS AND CORRECTIVE MEASURES SHOULD BE DOCUMENTED THOROUGHLY.
- SEDIMENT ACCUMULATED IN BASIN SHALL BE REMOVED AS NEEDED TO MAINTAIN CONTROL MEASURE EFFECTIVENESS, TYPICALLY WHEN SEDIMENT DEPTH REACHES ONE FOOT (I.E. TWO FEET BELOW SPILLWAY CREST).
- SEDIMENT BASINS ARE TO REMAIN IN PLACE UNTIL THE UPSTREAM DISTURBED AREA IS PERMANENTLY STABILIZED.
- PERMANENTLY STABILIZE AREA AFTER SEDIMENT BASIN REMOVAL.

**TEMPORARY SEDIMENT BASIN**

TSB

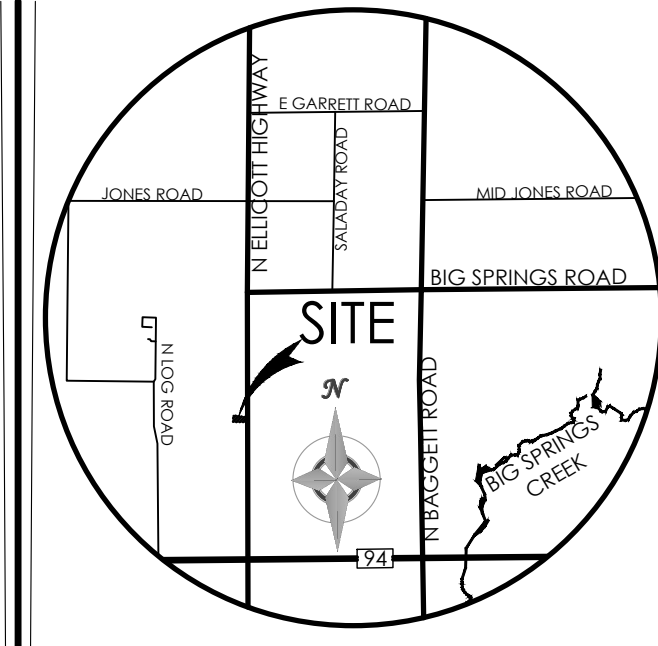
STORMWATER ENTERPRISE

APPROVED: [Signature]

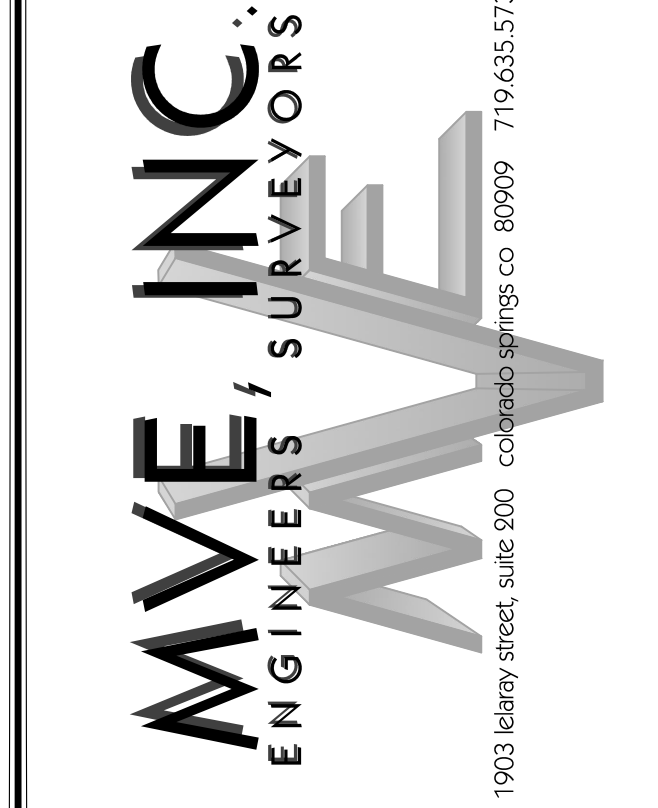
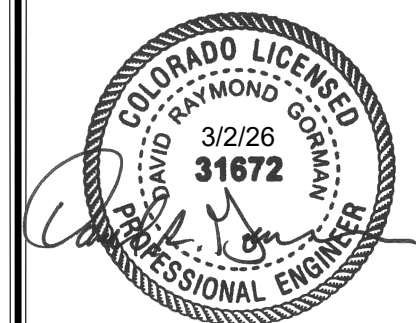
ISSUED: 10/7/19

REVISION: 8/19/2020

DRAWING NO: 900-TSB-2



BENCHMARK



REVISIONS

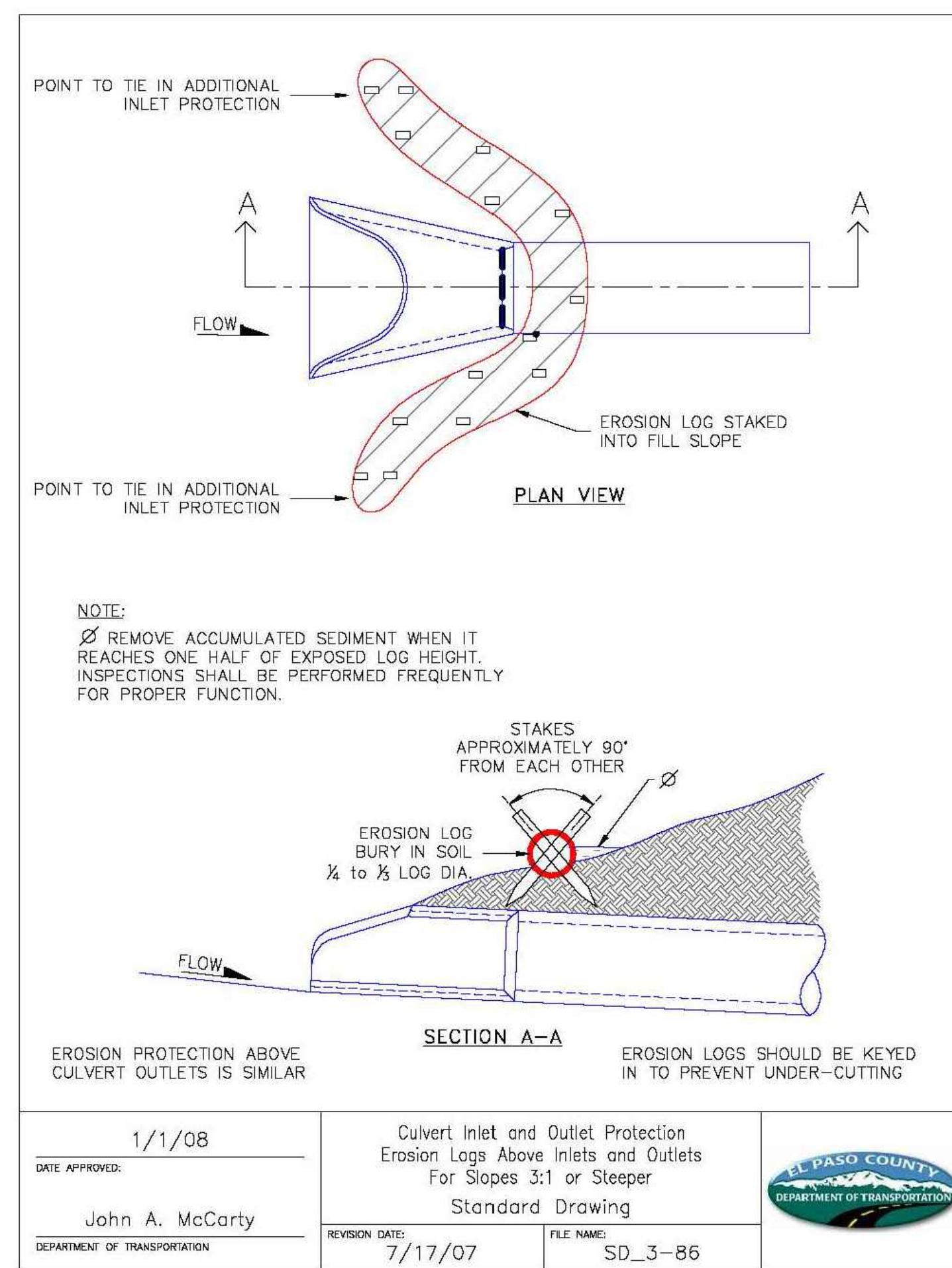
DESIGNED BY \_\_\_\_\_  
DRAWN BY \_\_\_\_\_  
AS-BUILT BY \_\_\_\_\_  
CHECKED BY \_\_\_\_\_

ROCKY MOUNTAIN CALVARY  
CHAPEL - ELLICOTT

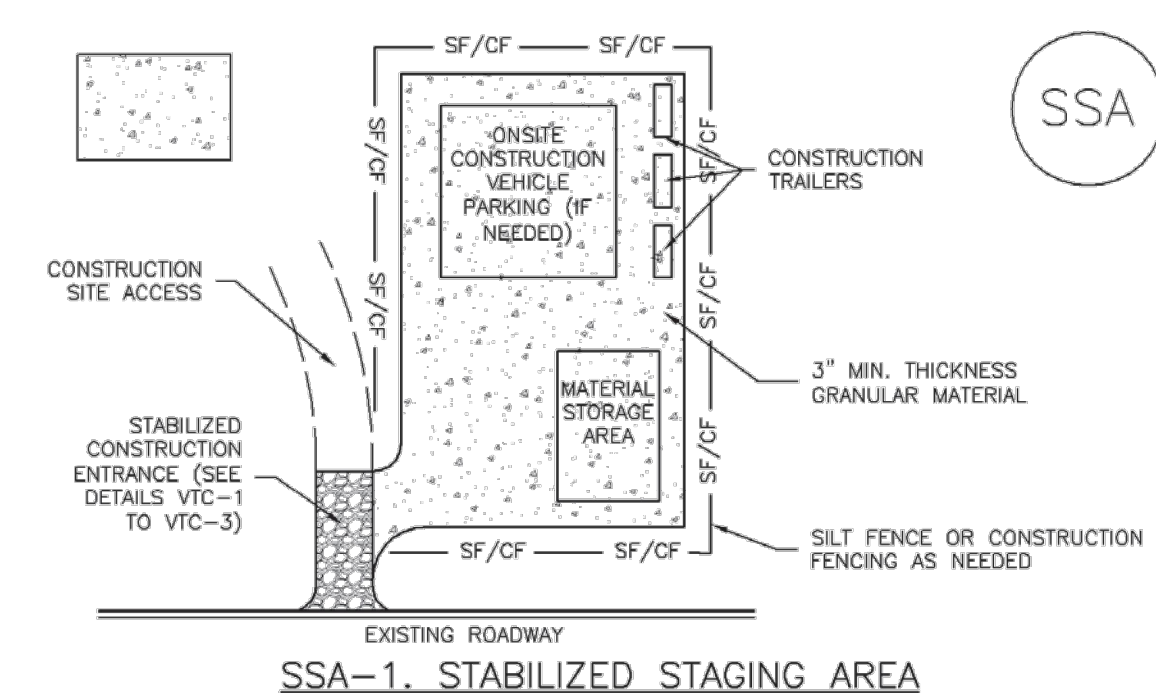
GRADING & EROSION  
CONTROL PLAN  
EROSION CONTROL DET

C1.6 MVE PROJECT 61182  
MVE DRAWING GEC-ED

APRIL 4, 2025  
SHEET 6 OF 6



**Stabilized Staging Area (SSA) SM-6**



**STABILIZED STAGING AREA INSTALLATION NOTES**

- SEE PLAN VIEW FOR LOCATION OF STAGING AREA(S).  
-CONTRACTOR MAY ADJUST LOCATION AND SIZE OF STAGING AREA WITH APPROVAL FROM THE LOCAL JURISDICTION.
- STABILIZED STAGING AREA SHOULD BE APPROPRIATE FOR THE NEEDS OF THE SITE. OVERSIZING RESULTS IN A LARGER AREA TO STABILIZE FOLLOWING CONSTRUCTION.
- STAGING AREA SHALL BE STABILIZED PRIOR TO OTHER OPERATIONS ON THE SITE.
- THE STABILIZED STAGING AREA SHALL CONSIST OF A MINIMUM 3" THICK GRANULAR MATERIAL.
- UNLESS OTHERWISE SPECIFIED BY LOCAL JURISDICTION, ROCK SHALL CONSIST OF DOT SECT. #703, AASHTO #3 COARSE AGGREGATE OR 8" (MINUS) ROCK.
- ADDITIONAL PERIMETER BMPs MAY BE REQUIRED INCLUDING BUT NOT LIMITED TO SILT FENCE AND CONSTRUCTION FENCING.

**STABILIZED STAGING AREA MAINTENANCE NOTES**

- INSPECT BMPs EACH WORKDAY, AND MAINTAIN THEM IN EFFECTIVE OPERATING CONDITION. MAINTENANCE OF BMPs SHOULD BE PROACTIVE, NOT REACTIVE. INSPECT BMPs AS SOON AS POSSIBLE (AND ALWAYS WITHIN 24 HOURS) FOLLOWING A STORM THAT CAUSES SURFACE EROSION, AND PERFORM NECESSARY MAINTENANCE.
- FREQUENT OBSERVATIONS AND MAINTENANCE ARE NECESSARY TO MAINTAIN BMPs IN EFFECTIVE OPERATING CONDITION. INSPECTIONS AND CORRECTIVE MEASURES SHOULD BE DOCUMENTED THOROUGHLY.
- WHERE BMPs HAVE FAILED, REPAIR OR REPLACEMENT SHOULD BE INITIATED UPON DISCOVERY OF THE FAILURE.
- ROCK SHALL BE REAPPLIED OR REGRADED AS NECESSARY IF RUTTING OCCURS OR UNDERLYING SUBGRADE BECOMES EXPOSED.

**SM-6 Stabilized Staging Area (SSA)**

**STABILIZED STAGING AREA MAINTENANCE NOTES**

- STABILIZED STAGING AREA SHALL BE ENLARGED IF NECESSARY TO CONTAIN PARKING, STORAGE, AND UNLOADING/LOADING OPERATIONS.
- THE STABILIZED STAGING AREA SHALL BE REMOVED AT THE END OF CONSTRUCTION. THE GRANULAR MATERIAL SHALL BE REMOVED OR, IF APPROVED BY THE LOCAL JURISDICTION, USED ON SITE, AND THE AREA COVERED WITH TOPSOIL, SEEDED AND MULCHED OR OTHERWISE STABILIZED IN A MANNER APPROVED BY LOCAL JURISDICTION.

**NOTE:** MANY MUNICIPALITIES PROHIBIT THE USE OF RECYCLED CONCRETE AS GRANULAR MATERIAL FOR STABILIZED STAGING AREAS DUE TO DIFFICULTIES WITH RE-ESTABLISHMENT OF VEGETATION IN AREAS WHERE RECYCLED CONCRETE WAS PLACED.

**NOTE:** MANY JURISDICTIONS HAVE BMP DETAILS THAT VARY FROM USFCD STANDARD DETAILS. CONSULT WITH LOCAL JURISDICTIONS AS TO WHICH DETAIL SHOULD BE USED WHEN DIFFERENCES ARE NOTED.

(DETAILS ADAPTED FROM DOUGLAS COUNTY, COLORADO, NOT AVAILABLE IN AUTOCAD)