

Show vicinity map and existing WQ facility

Add GEC Standard Notes from Checklist

Add a barrier to protect neighboring property during construction

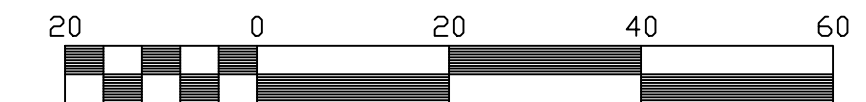
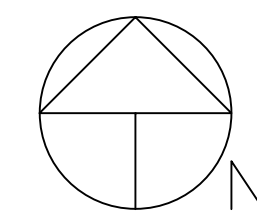
Show location of all erosion control measures
Provide Stormwater BMP Details

do not use the same symbol for two different erosion control measures

add property line, construction site boundaries, stormwater flow arrow, construction fence

WOODMEN ROAD R.O.W. VARIES

S 89°10'37" E 224.00'



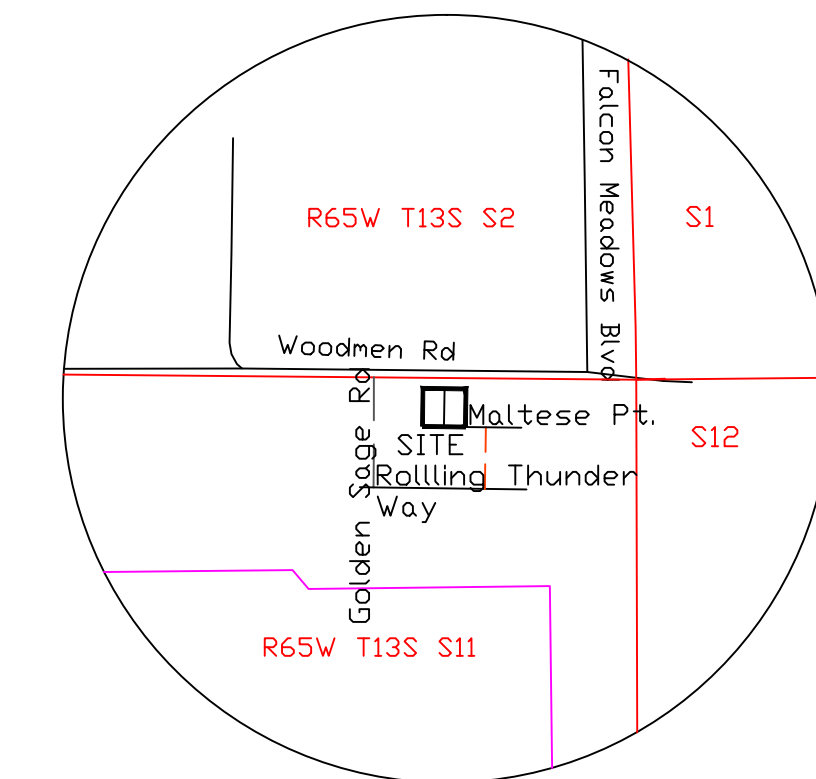
Scale 1" = 20'

Contour Interval: 1'

WGS 84 ORTHOMETRIC HEIGHTS
TBM'S SHOWN ON MANHOLE RIMS

LEGEND:

- × FOUND 60D NAIL (SITE IS NOT MONUMENTED)
- ◇ FOUND #4 REBAR
- ⊙ SEWER MANHOLE
- ⊗ WATER VALVE
- ⊕ FIRE HYDRANT
- ⊞ ELECTRIC VAULT
- PUBLIC UTILITY - PER VISIBLE EVIDENCE



VICINITY MAP
1"=1000'

Add a note about existing vegetation at the Site

CONTOUR LEGEND:

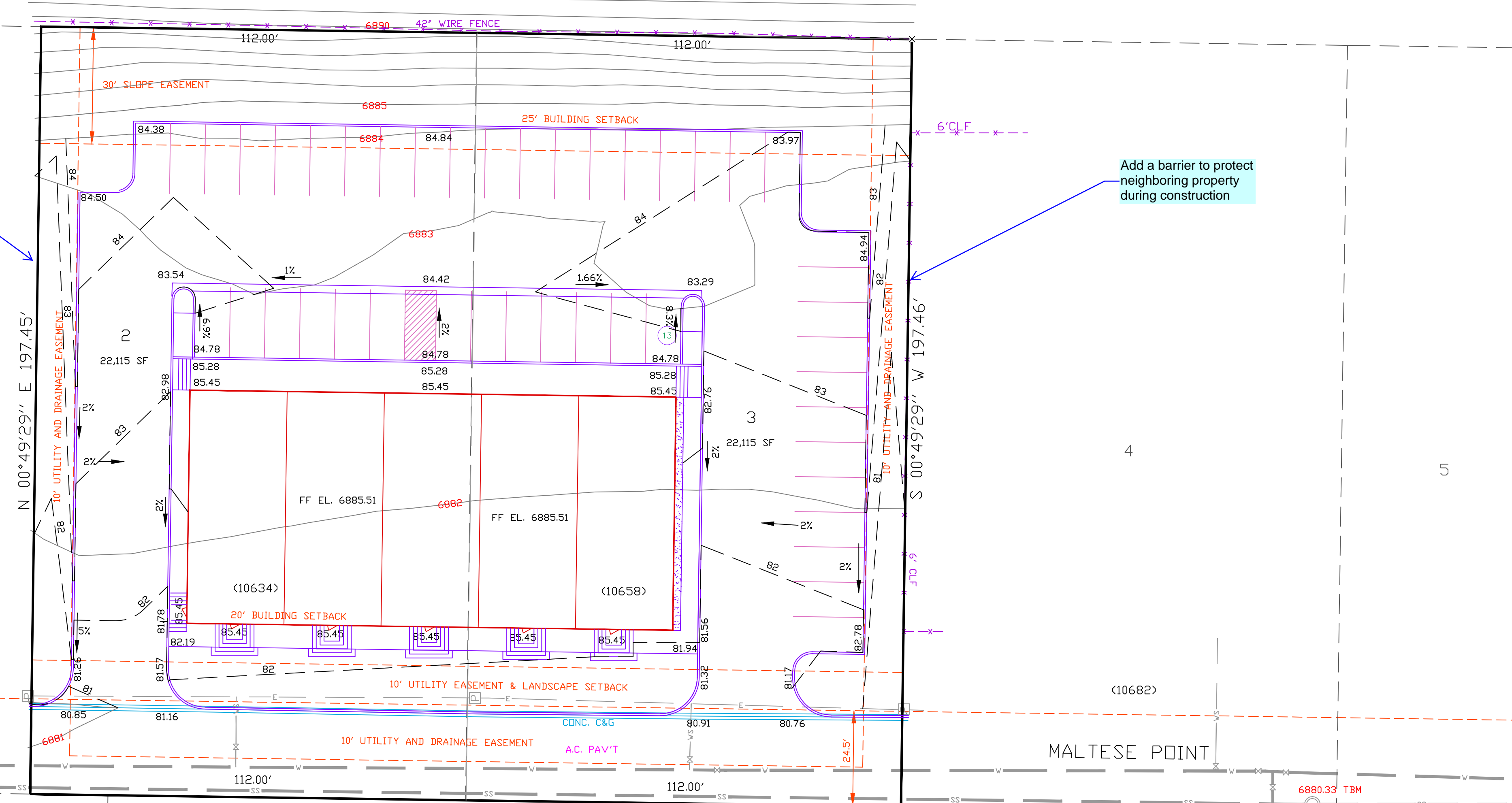
- ORIGINAL CONTOURS:
- FINISH CONTOURS:

EROSION CONTROL LEGEND:

Label all proposed temporary construction control measures by phase of implementation (initial, interim, final)

- SILT FENCE (SF)
- VEHICLE TRACKING CONTROL (VTC)
- STOCK PILE PROTECTION (SP)
- LIMIT OF DISTURBANCE 0.272 AC. clearly show on figure
- STABILIZED STAGING AREA (SSA)

add property line, construction site boundaries, stormwater flow arrow, construction fence



MALTESE POINT

(PRIVATE)

FIRE HOUSE VIEW (PRIVATE)

1

4

5

(10610)

(10682)

N 89°10'31" W 224.00'

(10659)
3

(10635)

11

12

9

10

DRAWN BY: O.E. WATTS
DATE: 1-20-20
DWG. NO.: 19-5348-05
SURVEYED BY: DEW, ESW, 6-26-19

APPROVED BY:
PROJ. NO.
DWG.

REVISIONS

OLIVER E. WATTS
CONSULTING ENGINEER
COLORADO SPRINGS

PROJECT
10634 & 10658 MALTESE POINT
LOTS 2 & 3, ROLLING THUNDER BUSINESS PARK
EL PASO COUNTY

SHT. NAME
GRADING AND EROSION CONTROL PLAN

SHT. NO.
OF