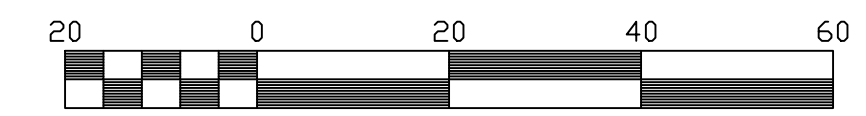
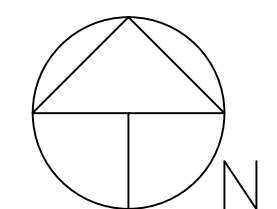


Please label the proposed curb and gutter throughout the site and provide a detail.

WOODMEN ROAD R.O.W. VARIES

S 89°10'37" E 224.00'



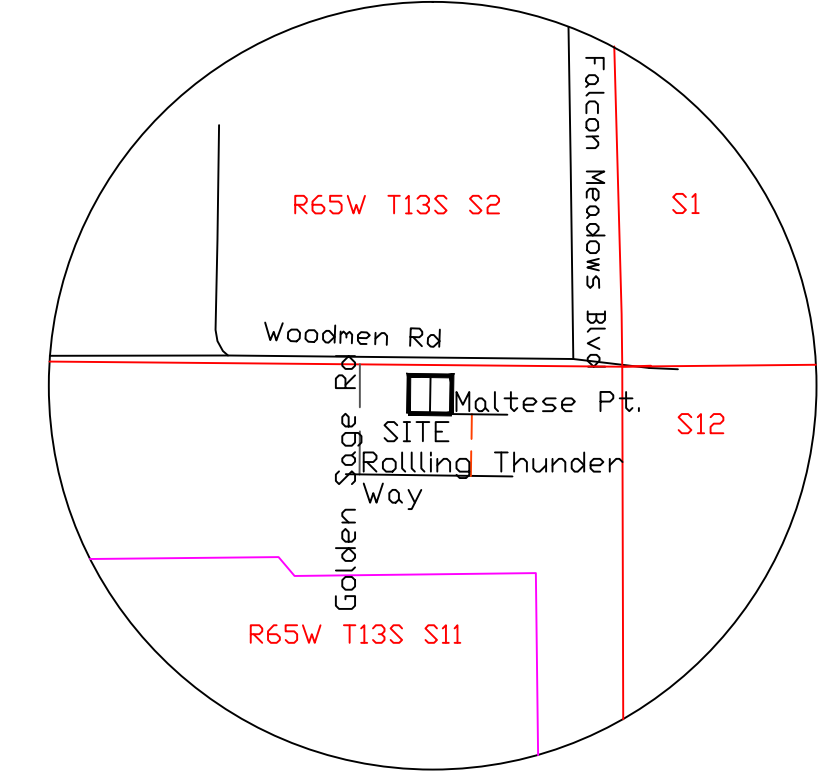
Scale 1" = 20'

Contour Interval: 1'

WGS 84 ORTHOMETRIC HEIGHTS  
TBM'S SHOWN ON MANHOLE RIMS

LEGEND:

- × FOUND 60D NAIL (SITE IS NOT MONUMENTED)
- ◇ FOUND #4 REBAR
- ⊙ SEWER MANHOLE
- ⊗ WATER VALVE
- ⊕ FIRE HYDRANT
- ⊞ ELECTRIC VAULT
- PUBLIC UTILITY - PER VISIBLE EVIDENCE



VICINITY MAP  
1"=1000'

CONTOUR LEGEND:

- ORIGINAL CONTOURS:
- FINISH CONTOURS:

EROSION CONTROL LEGEND:

- SILT FENCE (SF)
- ⊞ VEHICLE TRACKING CONTROL (VTC)
- ☁ STOCK PILE PROTECTION (SP)
- LIMIT OF DISTURBANCE 0.272 AC.
- ☁ STABILIZED STAGING AREA (SSA)

Add PCD File No. PPR2010

Please verify/revise the contour elevation labels shown. The elevations do not appear to match the contour elevations on the original approved construction documents nor the documents from the adjacent approved lots. Please show additional contours along the outside of the property line (east and west).

identify what this is (concrete cross pan?)

Please identify what this is. If it is a PED ramp please provide a detail. Coordinate with the planner so that it is reflected on the site plan also.

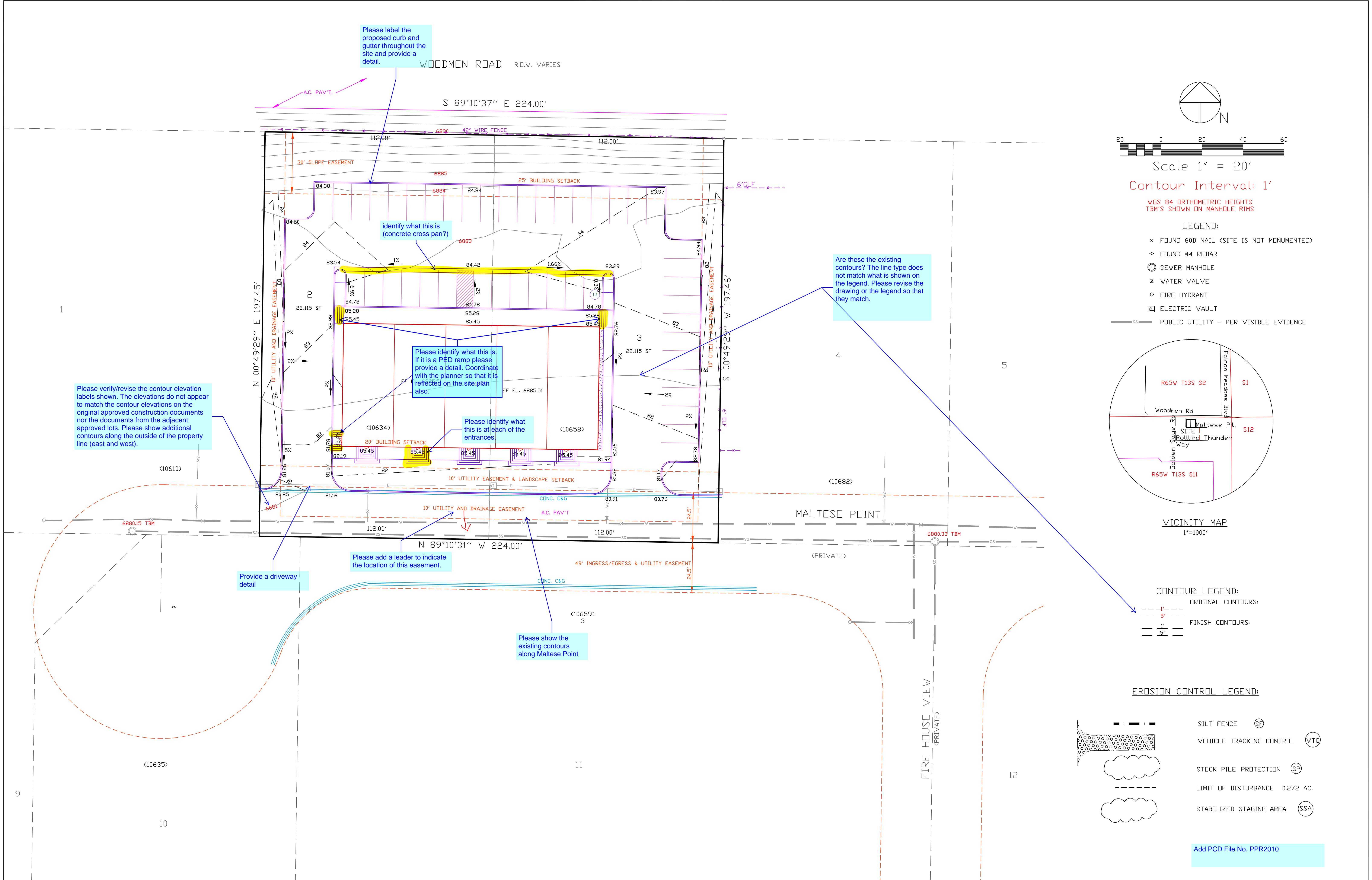
Please identify what this is at each of the entrances.

Are these the existing contours? The line type does not match what is shown on the legend. Please revise the drawing or the legend so that they match.

Provide a driveway detail

Please add a leader to indicate the location of this easement.

Please show the existing contours along Maltese Point



DRAWN BY: O.E. WATTS  
DATE: 1-20-20  
DWG. NO.: 19-5348-05  
SURVEYED BY: DEW, ESW, 6-26-19

APPROVED BY:  
PROJ. NO.  
DWG.

REVISIONS

OLIVER E. WATTS  
CONSULTING ENGINEER  
COLORADO SPRINGS

PROJECT  
10634 & 10658 MALTESE POINT  
LOTS 2 & 3, ROLLING THUNDER BUSINESS PARK  
EL PASO COUNTY

SHT. NAME  
**GRADING AND EROSION CONTROL PLAN**

SHT. NO.  
OF