

LUMINAIRE FIXTURE SCHEDULE

MARK	MANUFACTURER	CATALOG NO.	LAMPS	FINISH	MOUNTING	WATTAGE	VOLTAGE	REMARKS
EX1	HUBBELL OR APPROVED EQUAL	VP-S-48L-110-4K7 4-BC	LED 4000K 11000 LUMENS	BLACK	POLE 20' AFF	110W	UNV	POLE MOUNT AREA LIGHT WITH ONE TYPE 4 HEAD, BACKSHIELD OPTION

WOODMEN ROAD

GENERAL NOTES

A. ALL MATERIALS AND INSTALLATIONS SHALL BE IN ACCORDANCE WITH THE LATEST ISSUE OF LOCAL AND NATIONAL ELECTRICAL CODES, ELECTRICAL SPECIFICATIONS AND DRAWINGS.

KEYED NOTES

1 LIGHTING FOR THE WALKWAYS WILL BE PROVIDED BY WALL-MOUNTED, DOWN CASTING FIXTURES AS LOCATED ON PROPOSED BUILDING.



110 S. SIERRA MADRE ST.
COLORADO SPRINGS, CO 80903
TELEPHONE: (719) 520-9279

LUMINAIRE

POINT BY POINT CALCULATION SUMMARY			
AREA NAME	AVERAGE	MAXIMUM	MINIMUM
PROPERTY	1.75 fc	4.4 fc	0.0 fc

POINT BY POINT

ORDERING INFORMATION ORDERING EXAMPLE: VPS24L-S54K7-48/000/000/000/779-FL42M-04BC

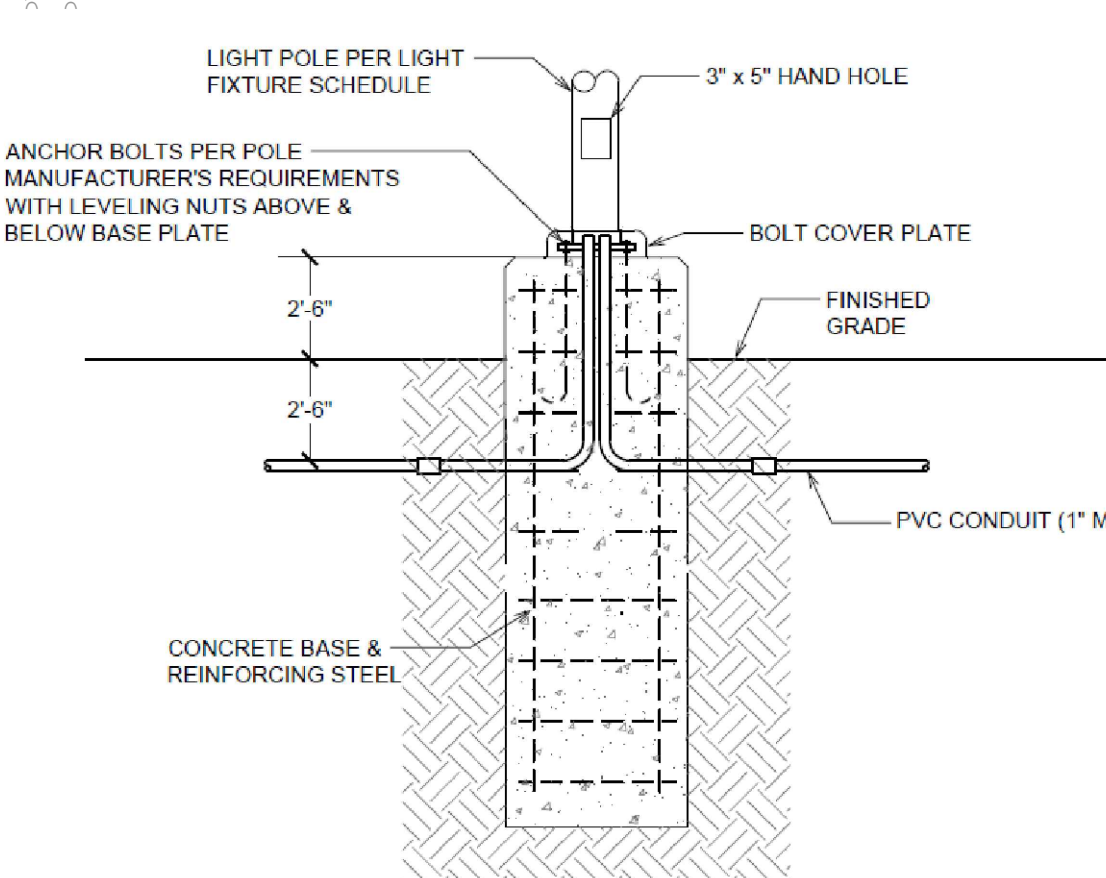
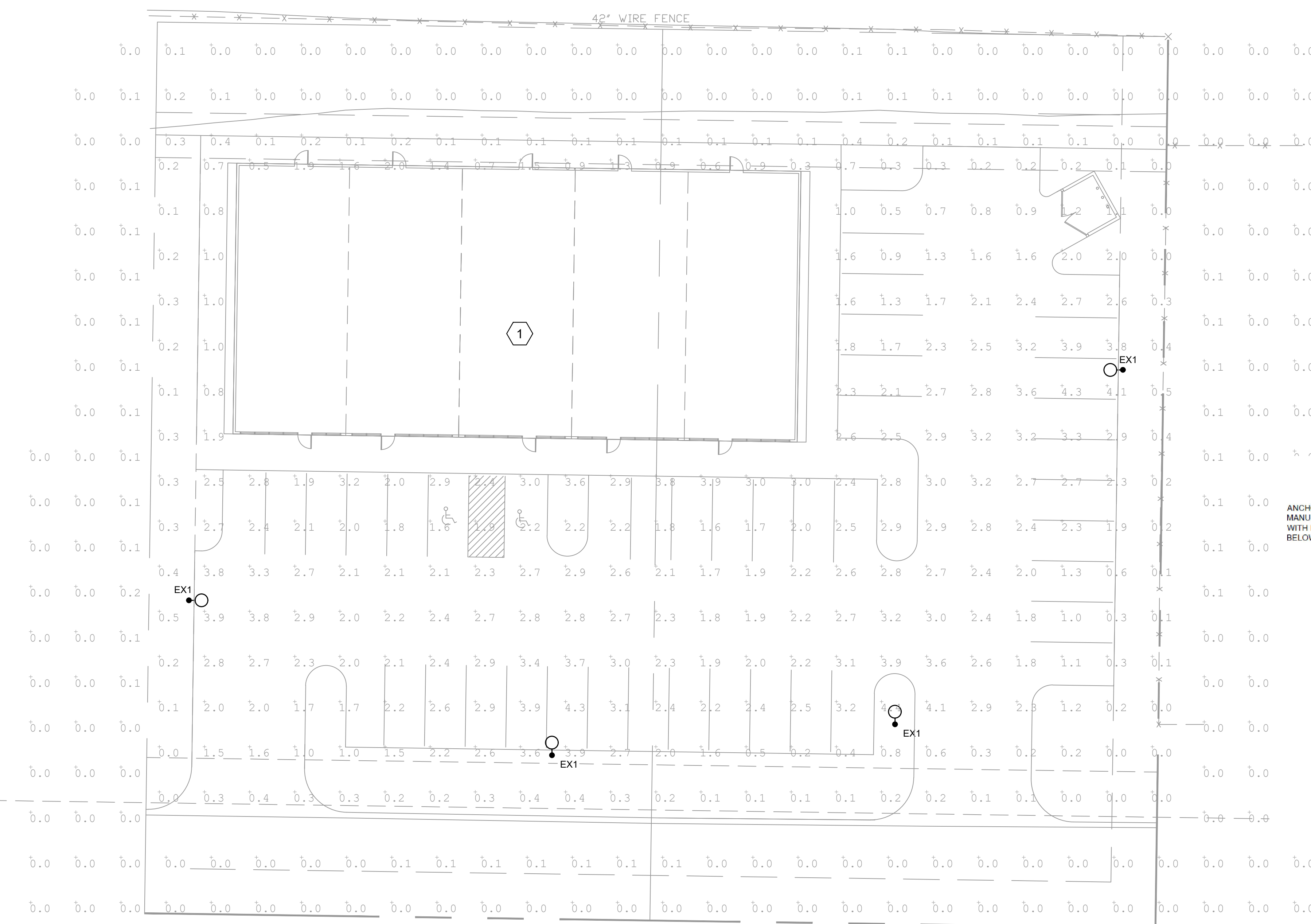
VPS	LED ENGINE	CATEGORY	ROTATION	VOLTAGE	COLOR	OPTIONS
VPS 24L	S54K7	3K7 3000K 75 OH	Leave Blank for no rotation	UNV 120/277V	BL Black Insulated	F Frame
VPS 40	800K LED	80K 000K 75 OH	1° Optic rotation kit	200 200V	SW Silver Insulated	SP Pole Socket
VPS 40	800K LED	80K 000K 75 OH	1° Optic rotation kit	240 240V	PS Platinum Silver Smooth	SC Backshield (Available for PLS 2, 3, 4, 8W Config)
VPS 40	800K LED	80K 000K 75 OH	1° Optic rotation kit	277 277V	WE White Insulated	CC Custom Color

INDUSTRY CONTROL OPTIONS:

- 779 7 Pin Receptacle only allowing color, utility control, or emergency control.
- 779-02 7 Pin Receptacle w/locking Cap
- 779-03 7 Pin Receptacle w/locking Cap
- 779-04 7 Pin Receptacle w/locking Cap
- 779-05 7 Pin Receptacle w/locking Cap
- 779-06 7 Pin Receptacle w/locking Cap
- 779-07 7 Pin Receptacle w/locking Cap
- 779-08 7 Pin Receptacle w/locking Cap
- 779-09 7 Pin Receptacle w/locking Cap
- 779-10 7 Pin Receptacle w/locking Cap
- 779-11 7 Pin Receptacle w/locking Cap
- 779-12 7 Pin Receptacle w/locking Cap
- 779-13 7 Pin Receptacle w/locking Cap
- 779-14 7 Pin Receptacle w/locking Cap
- 779-15 7 Pin Receptacle w/locking Cap
- 779-16 7 Pin Receptacle w/locking Cap
- 779-17 7 Pin Receptacle w/locking Cap
- 779-18 7 Pin Receptacle w/locking Cap
- 779-19 7 Pin Receptacle w/locking Cap
- 779-20 7 Pin Receptacle w/locking Cap
- 779-21 7 Pin Receptacle w/locking Cap
- 779-22 7 Pin Receptacle w/locking Cap
- 779-23 7 Pin Receptacle w/locking Cap
- 779-24 7 Pin Receptacle w/locking Cap
- 779-25 7 Pin Receptacle w/locking Cap
- 779-26 7 Pin Receptacle w/locking Cap
- 779-27 7 Pin Receptacle w/locking Cap
- 779-28 7 Pin Receptacle w/locking Cap
- 779-29 7 Pin Receptacle w/locking Cap
- 779-30 7 Pin Receptacle w/locking Cap
- 779-31 7 Pin Receptacle w/locking Cap
- 779-32 7 Pin Receptacle w/locking Cap
- 779-33 7 Pin Receptacle w/locking Cap
- 779-34 7 Pin Receptacle w/locking Cap
- 779-35 7 Pin Receptacle w/locking Cap
- 779-36 7 Pin Receptacle w/locking Cap
- 779-37 7 Pin Receptacle w/locking Cap
- 779-38 7 Pin Receptacle w/locking Cap
- 779-39 7 Pin Receptacle w/locking Cap
- 779-40 7 Pin Receptacle w/locking Cap
- 779-41 7 Pin Receptacle w/locking Cap
- 779-42 7 Pin Receptacle w/locking Cap
- 779-43 7 Pin Receptacle w/locking Cap
- 779-44 7 Pin Receptacle w/locking Cap
- 779-45 7 Pin Receptacle w/locking Cap
- 779-46 7 Pin Receptacle w/locking Cap
- 779-47 7 Pin Receptacle w/locking Cap
- 779-48 7 Pin Receptacle w/locking Cap
- 779-49 7 Pin Receptacle w/locking Cap
- 779-50 7 Pin Receptacle w/locking Cap
- 779-51 7 Pin Receptacle w/locking Cap
- 779-52 7 Pin Receptacle w/locking Cap
- 779-53 7 Pin Receptacle w/locking Cap
- 779-54 7 Pin Receptacle w/locking Cap
- 779-55 7 Pin Receptacle w/locking Cap
- 779-56 7 Pin Receptacle w/locking Cap
- 779-57 7 Pin Receptacle w/locking Cap
- 779-58 7 Pin Receptacle w/locking Cap
- 779-59 7 Pin Receptacle w/locking Cap
- 779-60 7 Pin Receptacle w/locking Cap
- 779-61 7 Pin Receptacle w/locking Cap
- 779-62 7 Pin Receptacle w/locking Cap
- 779-63 7 Pin Receptacle w/locking Cap
- 779-64 7 Pin Receptacle w/locking Cap
- 779-65 7 Pin Receptacle w/locking Cap
- 779-66 7 Pin Receptacle w/locking Cap
- 779-67 7 Pin Receptacle w/locking Cap
- 779-68 7 Pin Receptacle w/locking Cap
- 779-69 7 Pin Receptacle w/locking Cap
- 779-70 7 Pin Receptacle w/locking Cap
- 779-71 7 Pin Receptacle w/locking Cap
- 779-72 7 Pin Receptacle w/locking Cap
- 779-73 7 Pin Receptacle w/locking Cap
- 779-74 7 Pin Receptacle w/locking Cap
- 779-75 7 Pin Receptacle w/locking Cap
- 779-76 7 Pin Receptacle w/locking Cap
- 779-77 7 Pin Receptacle w/locking Cap
- 779-78 7 Pin Receptacle w/locking Cap
- 779-79 7 Pin Receptacle w/locking Cap
- 779-80 7 Pin Receptacle w/locking Cap
- 779-81 7 Pin Receptacle w/locking Cap
- 779-82 7 Pin Receptacle w/locking Cap
- 779-83 7 Pin Receptacle w/locking Cap
- 779-84 7 Pin Receptacle w/locking Cap
- 779-85 7 Pin Receptacle w/locking Cap
- 779-86 7 Pin Receptacle w/locking Cap
- 779-87 7 Pin Receptacle w/locking Cap
- 779-88 7 Pin Receptacle w/locking Cap
- 779-89 7 Pin Receptacle w/locking Cap
- 779-90 7 Pin Receptacle w/locking Cap
- 779-91 7 Pin Receptacle w/locking Cap
- 779-92 7 Pin Receptacle w/locking Cap
- 779-93 7 Pin Receptacle w/locking Cap
- 779-94 7 Pin Receptacle w/locking Cap
- 779-95 7 Pin Receptacle w/locking Cap
- 779-96 7 Pin Receptacle w/locking Cap
- 779-97 7 Pin Receptacle w/locking Cap
- 779-98 7 Pin Receptacle w/locking Cap
- 779-99 7 Pin Receptacle w/locking Cap
- 779-100 7 Pin Receptacle w/locking Cap

Accessories and Services (Order Separately)

- 47999 4 Pin Adapter for square or round pole
- 48000 4 Pin Adapter for square or round pole
- 48001 4 Pin Adapter for square or round pole
- 48002 4 Pin Adapter for square or round pole
- 48003 4 Pin Adapter for square or round pole
- 48004 4 Pin Adapter for square or round pole
- 48005 4 Pin Adapter for square or round pole
- 48006 4 Pin Adapter for square or round pole
- 48007 4 Pin Adapter for square or round pole
- 48008 4 Pin Adapter for square or round pole
- 48009 4 Pin Adapter for square or round pole
- 48010 4 Pin Adapter for square or round pole
- 48011 4 Pin Adapter for square or round pole
- 48012 4 Pin Adapter for square or round pole
- 48013 4 Pin Adapter for square or round pole
- 48014 4 Pin Adapter for square or round pole
- 48015 4 Pin Adapter for square or round pole
- 48016 4 Pin Adapter for square or round pole
- 48017 4 Pin Adapter for square or round pole
- 48018 4 Pin Adapter for square or round pole
- 48019 4 Pin Adapter for square or round pole
- 48020 4 Pin Adapter for square or round pole
- 48021 4 Pin Adapter for square or round pole
- 48022 4 Pin Adapter for square or round pole
- 48023 4 Pin Adapter for square or round pole
- 48024 4 Pin Adapter for square or round pole
- 48025 4 Pin Adapter for square or round pole
- 48026 4 Pin Adapter for square or round pole
- 48027 4 Pin Adapter for square or round pole
- 48028 4 Pin Adapter for square or round pole
- 48029 4 Pin Adapter for square or round pole
- 48030 4 Pin Adapter for square or round pole
- 48031 4 Pin Adapter for square or round pole
- 48032 4 Pin Adapter for square or round pole
- 48033 4 Pin Adapter for square or round pole
- 48034 4 Pin Adapter for square or round pole
- 48035 4 Pin Adapter for square or round pole
- 48036 4 Pin Adapter for square or round pole
- 48037 4 Pin Adapter for square or round pole
- 48038 4 Pin Adapter for square or round pole
- 48039 4 Pin Adapter for square or round pole
- 48040 4 Pin Adapter for square or round pole
- 48041 4 Pin Adapter for square or round pole
- 48042 4 Pin Adapter for square or round pole
- 48043 4 Pin Adapter for square or round pole
- 48044 4 Pin Adapter for square or round pole
- 48045 4 Pin Adapter for square or round pole
- 48046 4 Pin Adapter for square or round pole
- 48047 4 Pin Adapter for square or round pole
- 48048 4 Pin Adapter for square or round pole
- 48049 4 Pin Adapter for square or round pole
- 48050 4 Pin Adapter for square or round pole
- 48051 4 Pin Adapter for square or round pole
- 48052 4 Pin Adapter for square or round pole
- 48053 4 Pin Adapter for square or round pole
- 48054 4 Pin Adapter for square or round pole
- 48055 4 Pin Adapter for square or round pole
- 48056 4 Pin Adapter for square or round pole
- 48057 4 Pin Adapter for square or round pole
- 48058 4 Pin Adapter for square or round pole
- 48059 4 Pin Adapter for square or round pole
- 48060 4 Pin Adapter for square or round pole
- 48061 4 Pin Adapter for square or round pole
- 48062 4 Pin Adapter for square or round pole
- 48063 4 Pin Adapter for square or round pole
- 48064 4 Pin Adapter for square or round pole
- 48065 4 Pin Adapter for square or round pole
- 48066 4 Pin Adapter for square or round pole
- 48067 4 Pin Adapter for square or round pole
- 48068 4 Pin Adapter for square or round pole
- 48069 4 Pin Adapter for square or round pole
- 48070 4 Pin Adapter for square or round pole
- 48071 4 Pin Adapter for square or round pole
- 48072 4 Pin Adapter for square or round pole
- 48073 4 Pin Adapter for square or round pole
- 48074 4 Pin Adapter for square or round pole
- 48075 4 Pin Adapter for square or round pole
- 48076 4 Pin Adapter for square or round pole
- 48077 4 Pin Adapter for square or round pole
- 48078 4 Pin Adapter for square or round pole
- 48079 4 Pin Adapter for square or round pole
- 48080 4 Pin Adapter for square or round pole
- 48081 4 Pin Adapter for square or round pole
- 48082 4 Pin Adapter for square or round pole
- 48083 4 Pin Adapter for square or round pole
- 48084 4 Pin Adapter for square or round pole
- 48085 4 Pin Adapter for square or round pole
- 48086 4 Pin Adapter for square or round pole
- 48087 4 Pin Adapter for square or round pole
- 48088 4 Pin Adapter for square or round pole
- 48089 4 Pin Adapter for square or round pole
- 48090 4 Pin Adapter for square or round pole
- 48091 4 Pin Adapter for square or round pole
- 48092 4 Pin Adapter for square or round pole
- 48093 4 Pin Adapter for square or round pole
- 48094 4 Pin Adapter for square or round pole
- 48095 4 Pin Adapter for square or round pole
- 48096 4 Pin Adapter for square or round pole
- 48097 4 Pin Adapter for square or round pole
- 48098 4 Pin Adapter for square or round pole
- 48099 4 Pin Adapter for square or round pole
- 48100 4 Pin Adapter for square or round pole



BACKFILL, CONCRETE, REINFORCING STEEL, AND ANCHOR BOLTS ARE SHOWN FOR REFERENCE ONLY. STRUCTURAL ENGINEER TO PROVIDE STRUCTURAL DESIGN FOR POLE BASE.

POLE BASE DETAIL
SCALE: NTS



REGISTRATION:

JESSE & SHERRIE TIX
CORE AND SHELL
10634 MALTESE POINT
PEYTON, CO 80831

A	ISSUED DATES:	03/11/2020
B	ISSUED FOR REVIEW:	03/11/2020
	DP PLAN APPROVAL:	06/30/2020

PROJECT NO. CLJ
DRAWN BY: MPC
CHECKED BY: MPC
DATE: 01/20/20

SHEET TITLE:
SITE LIGHTING
PHOTOMETRIC PLAN
PPR2010

SHEET NO.
E100A

PPR2010

FILE PATH: P:\ENGINEERING\PROJECTS\BUCHER DESIGN STUDIO\2020_FALCON RETAIL CORE & SHELL\DRAWING FILES\ELECTRICAL\E100A.DWG BY:##### DATE:Jun 30, 2020 2:32pm