



July 8, 2019

El Paso County Planning and Community Development
2880 International Circle, Suite 110
Colorado Springs, CO 80910

RE: 5401 Fountain Valley School Road
Stealth Wireless Telecommunications Facility
(Verizon Wireless: CSP BIG JOHNSON)

To Whom It May Concern;

Please accept this as a Letter of Intent for the above referenced address.

Owner: Fountain Valley School of Colorado
Janet M. Refior, BCP-E
6155 Fountain Valley School Road
Colorado Springs, CO 80911
(719) 391-5231

Applicant: Horizon Tower, LLC
John Kapulica
117 Town & Country Dr., Ste. A
Danville, CA 94526
(925) 314-1113 #241

Consultant: Q3 Consulting, Inc.
Mark Paiz
11817 Phoebe Street
Parker, CO 80134
Cell (303) 915-3428 / Office (720) 925-5103

Site Location, Size and Zoning: Please see attached map #1 for location. Approximately 937 acres zoned A-5 CAD-O.

Request and justification: Horizon Tower is proposing to construct a 70' wireless telecommunications facility designed as a stealth water tower. This facility was designed to accommodate multiple wireless carriers, which limits tower proliferation in the area. The location was chosen to achieve maximum coverage with the least visual impact to adjacent properties while providing a location to remedy a

significant gap in coverage. Please see the attached photo-simulations showing the water tank from various angles.

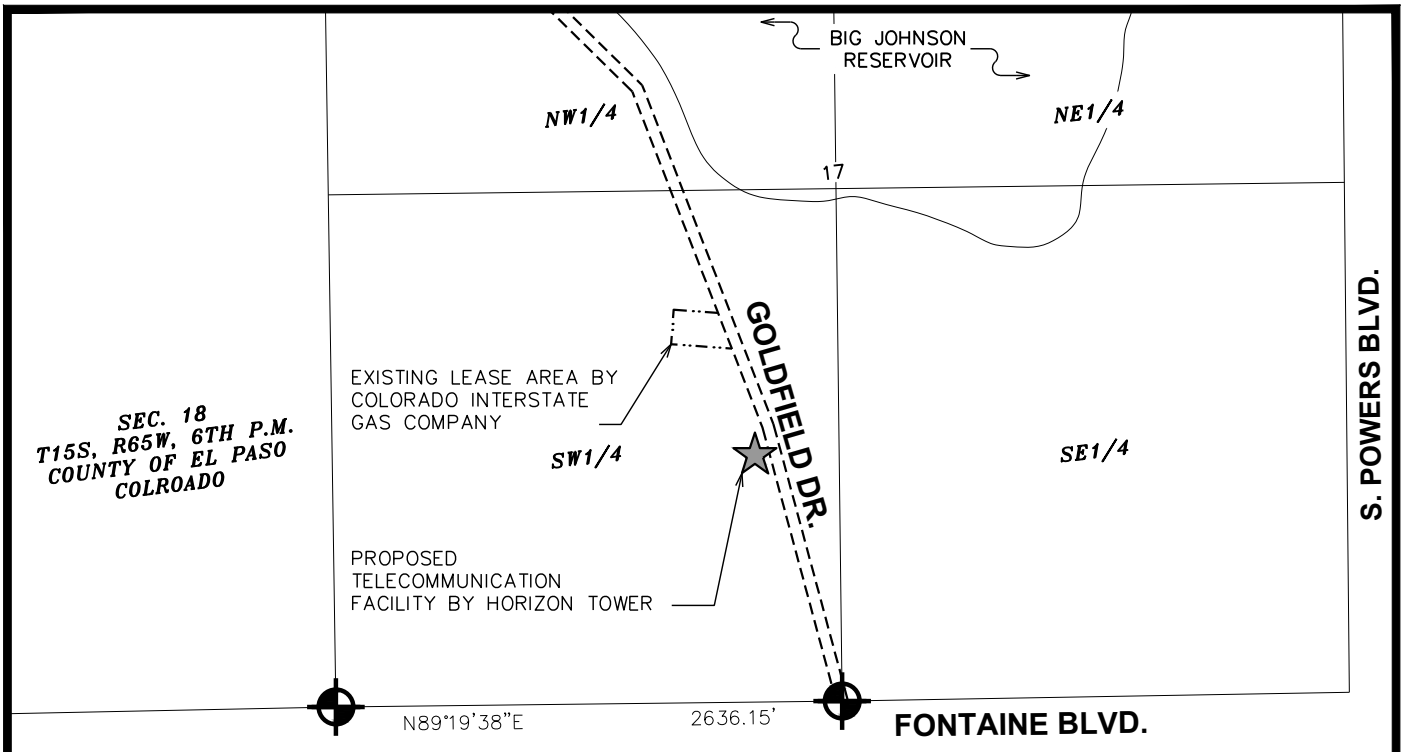
Existing and proposed facilities, structures, road, etc.: See attached map #1

Should you have questions or require additional information, please do not hesitate to contact me.

Thank you,

A handwritten signature in blue ink that reads "Herb Quintana". The signature is written in a cursive style with a large, sweeping flourish under the name.

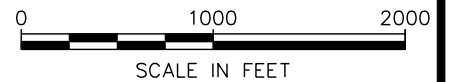
Herb Quintana



S. POWERS BLVD.

AREA MAP

SCALE: 1" = 1000'



SW1/4 OF SEC. 17
T15S, R65W, 6TH P.M.
COUNTY OF EL PASO
COLORADO

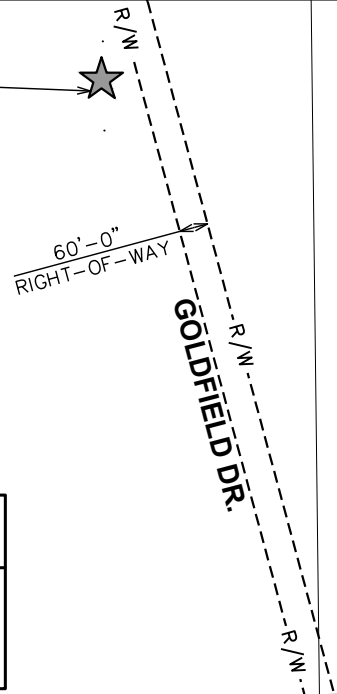
PROPOSED TELECOMMUNICATION
FACILITY BY HORIZON TOWER

NOTES:

1. THE BASIS OF THE MERIDIANS AND COORDINATES FOR THIS PLAT IS THE COLORADO STATE PLANE COORDINATE SYSTEM, NORTH AMERICAN DATUM 1983 (NAD83).
2. VERTICAL INFORMATION SHOWN, BASED ON THE NORTH AMERICAN VERTICAL DATUM OF 1988 (NAVD 88).
3. ALL DISTANCES ARE GROUND UNLESS OTHERWISE NOTED.
4. THE TOWER IS LOCATED IN AN AREA DESIGNATED AS ZONE X, AREAS OF MINIMUM FLOOD HAZARD (FEMA MAP # 08041C0952F).

1-A COORDINATES

LATITUDE: 38° 44' 27.29" N (NAD83)
LONGITUDE: 104° 41' 36.69" W (NAD83)
GROUND ELEVATION: 5,886' (NAVD88)



FONTAINE BLVD.

SITE PLAN

SCALE: 1" = 500'



PREPARED BY:

TOWER ENGINEERING PROFESSIONALS
500 E. 84TH AVE, SUITE C10
THORNTON, CO 80229
(303) 566-9914
www.tepgroup.net

PREPARED FOR:

HORIZON  TOWER, LLC

PROJECT INFORMATION:

**FOUNTAIN VALLEY
CO4714**
FONTAINE BLVD &
GOLDFIELD DR.
COLORADO SPRINGS, CO 80911
(EL PASO COUNTY)

REVISION: 0

TEP JOB #: 66886

SHEET NUMBER:

MAP#1



HORIZON TOWER, LLC

Fountain Valley
Fontaine Blvd. & Goldfield Dr.
Colorado Springs, CO 80911
(Douglas County)

PROPOSED VIEW LOCATION 4



PHOTO RENDERING BY TOWER ENGINEERING PROFESSIONALS, INC.





HORIZON TOWER, LLC

Fountain Valley

Fontaine Blvd. & Goldfield Dr.
Colorado Springs, CO 80911
(El Paso County)

PROPOSED VIEW LOCATION 3



PHOTO RENDERING BY TOWER ENGINEERING PROFESSIONALS, INC.





Fountain Valley

Fontaine Blvd. & Goldfield Dr.
Colorado Springs, CO 80911
(El Paso County)

PROPOSED VIEW LOCATION 2



PHOTO RENDERING BY TOWER ENGINEERING PROFESSIONALS, INC.



Fountain Valley

Fontaine Blvd. & Goldfield Dr.
Colorado Springs, CO 80911
(El Paso County)

PROPOSED VIEW LOCATION 1



PHOTO RENDERING BY TOWER ENGINEERING PROFESSIONALS, INC.

