

INDEX MAP
N.T.S.

THE ESTATES AT
ROLLING HILLS RANCH
FILING NO. 2
RECEPTION NO. 222714944
(NOT A PART)

GTL DEVELOPMENT INC
SCH. #
XXXXXXXXXX

UNPLATTED
(NOT A PART)

THE SANCTUARY FILING NO. 1 AT MERIDIAN RANCH

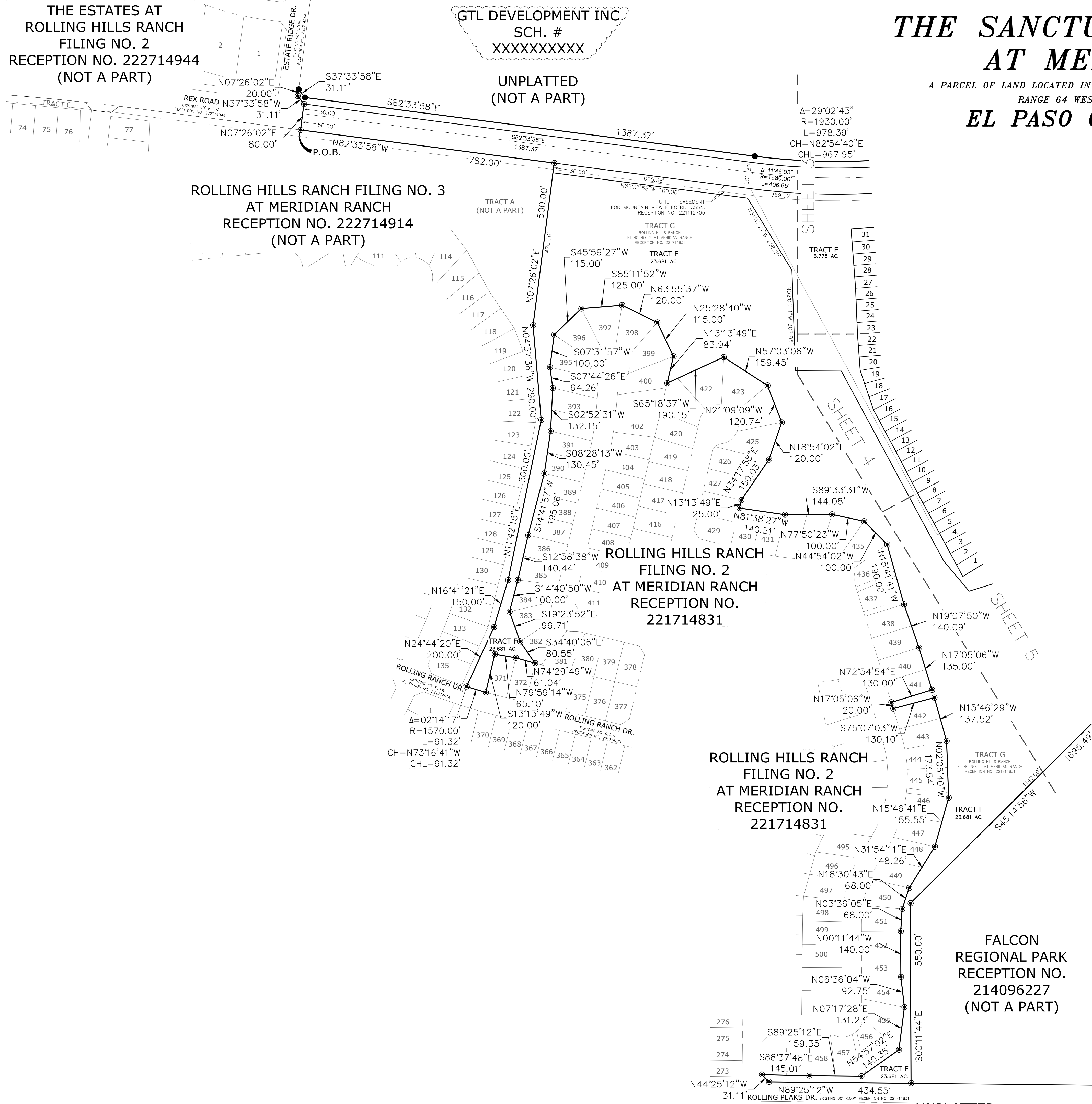
A PARCEL OF LAND LOCATED IN A PORTION OF SECTION 20, IN TOWNSHIP 12 SOUTH,
RANGE 64 WEST OF THE 6TH PRINCIPAL MERIDIAN
EL PASO COUNTY, COLORADO.

ROLLING HILLS RANCH FILING NO. 3
AT MERIDIAN RANCH
RECEPTION NO. 222714914
(NOT A PART)

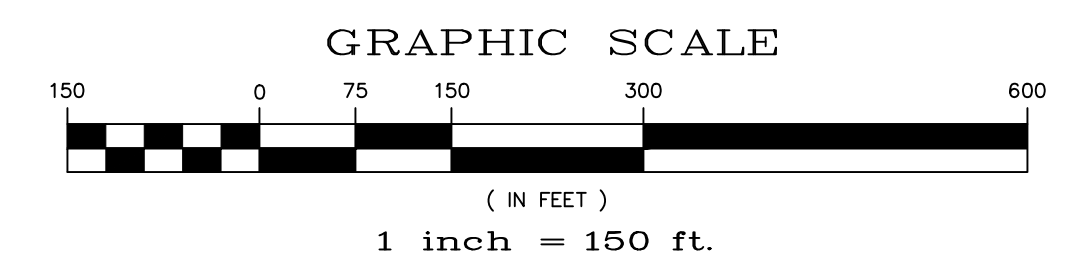
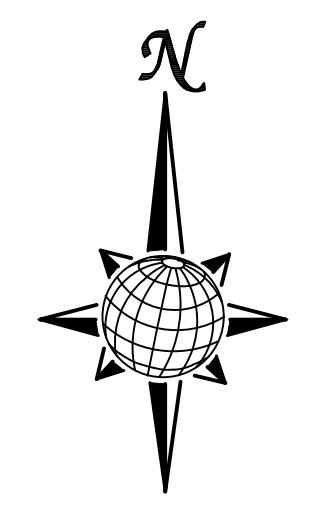
ROLLING HILLS RANCH
FILING NO. 2
AT MERIDIAN RANCH
RECEPTION NO.
221714831

ROLLING HILLS RANCH
FILING NO. 2
AT MERIDIAN RANCH
RECEPTION NO.
221714831

FALCON
REGIONAL PARK
RECEPTION NO.
214096227
(NOT A PART)



- LEGEND**
- = FOUND MONUMENT AS SHOWN
 - ⊙ = FOUND #4 REBAR WITH CAP PLS 34583
 - = SET #4 REBAR W/CAP PLS 34583
 - NR = NON-RADIAL BEARING
 - (82.62') = EASEMENT OR NO-BUILD DIM.
 - (12345) = ADDRESS
 - = MATCHLINE



DRAWN BY: LCG DATE: JULY 2022
CHECKED BY: TAK SHEET: 2 OF 5

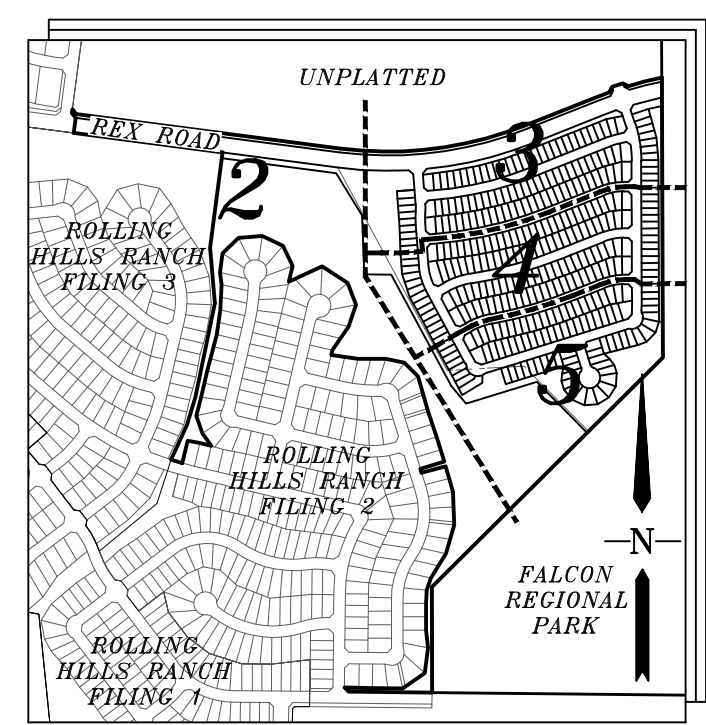
THE SANCTUARY FILING NO. 1

AT MERIDIAN RANCH

A PARCEL OF LAND LOCATED IN A PORTION OF SECTION 20, IN TOWNSHIP 12 SOUTH,
RANGE 64 WEST OF THE 6TH PRINCIPAL MERIDIAN
EL PASO COUNTY, COLORADO.

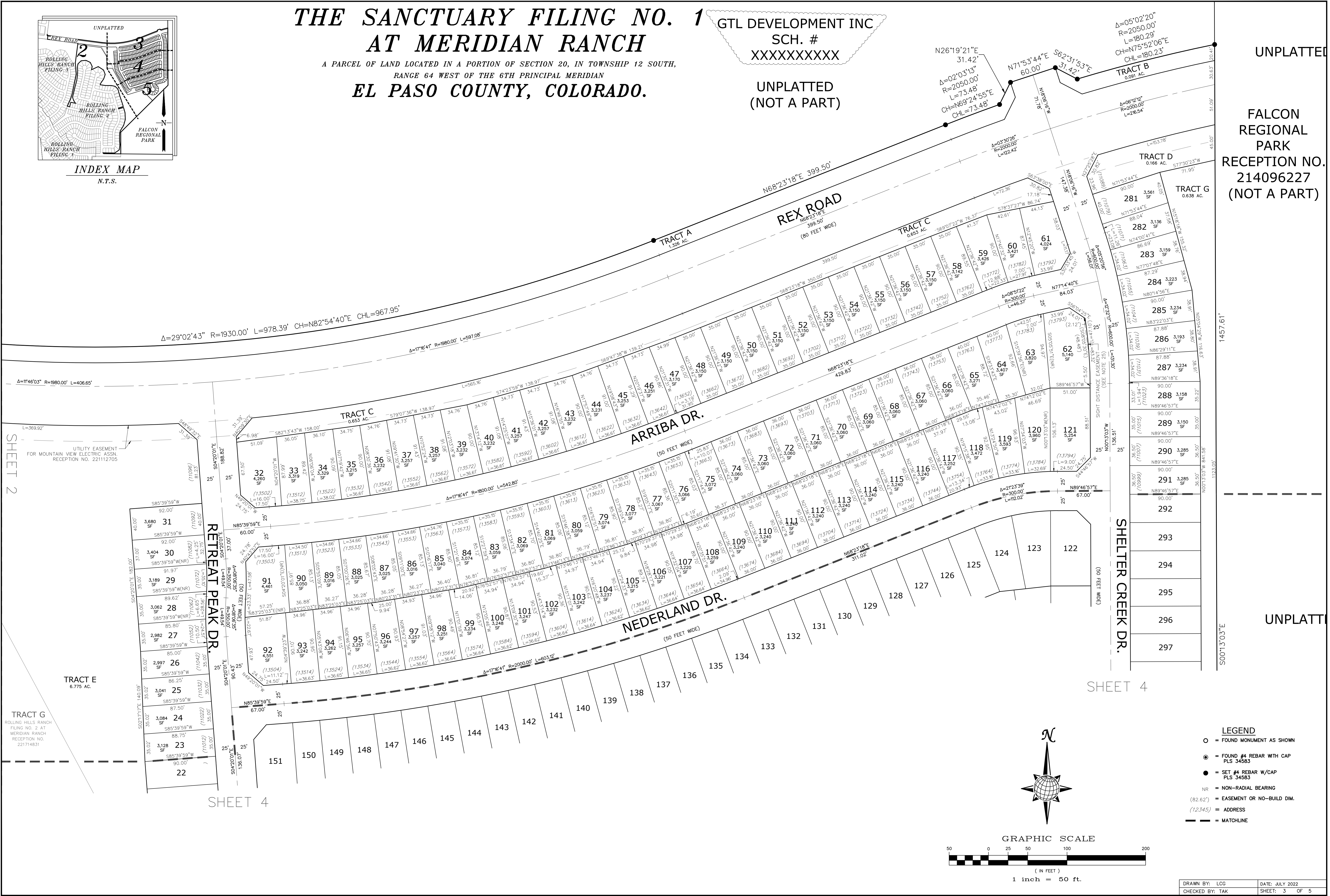
GTL DEVELOPMENT INC
SCH. #
XXXXXXXXXX

UNPLATTED
(NOT A PART)



INDEX MAP
N.T.S.

FALCON
REGIONAL
PARK
RECEPTION NO.
214096227
(NOT A PART)



UTILITY EASEMENT
FOR MOUNTAIN VIEW ELECTRIC ASSN.
RECEPTION NO. 221112705

SHEET 2

RETREAT PEAK DR.

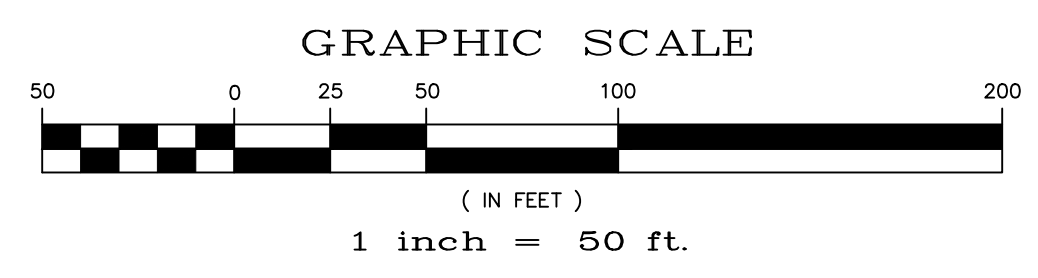
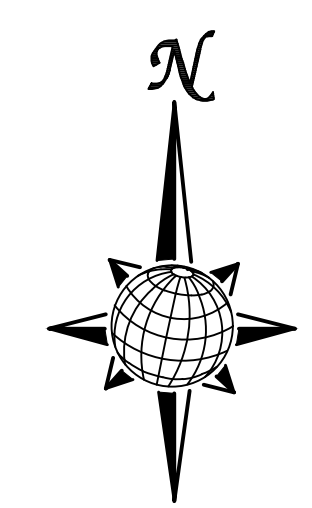
ARRIBA DR.

NEDERLAND DR.

SHELTER CREEK DR.

SHEET 4

SHEET 4

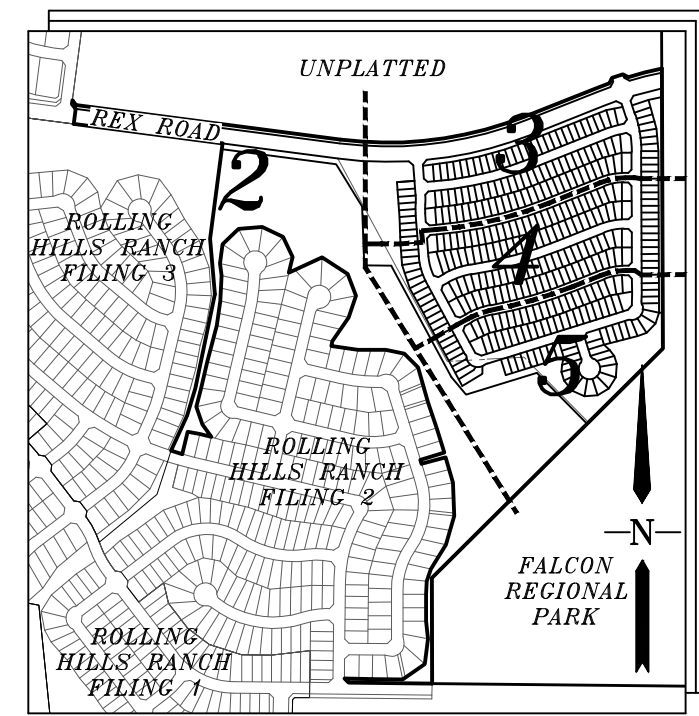


- LEGEND**
- = FOUND MONUMENT AS SHOWN
 - = FOUND #4 REBAR WITH CAP PLS 34583
 - = SET #4 REBAR W/CAP PLS 34583
 - NR = NON-RADIAL BEARING
 - (82.62') = EASEMENT OR NO-BUILD DIM.
 - (12345) = ADDRESS
 - = MATCHLINE

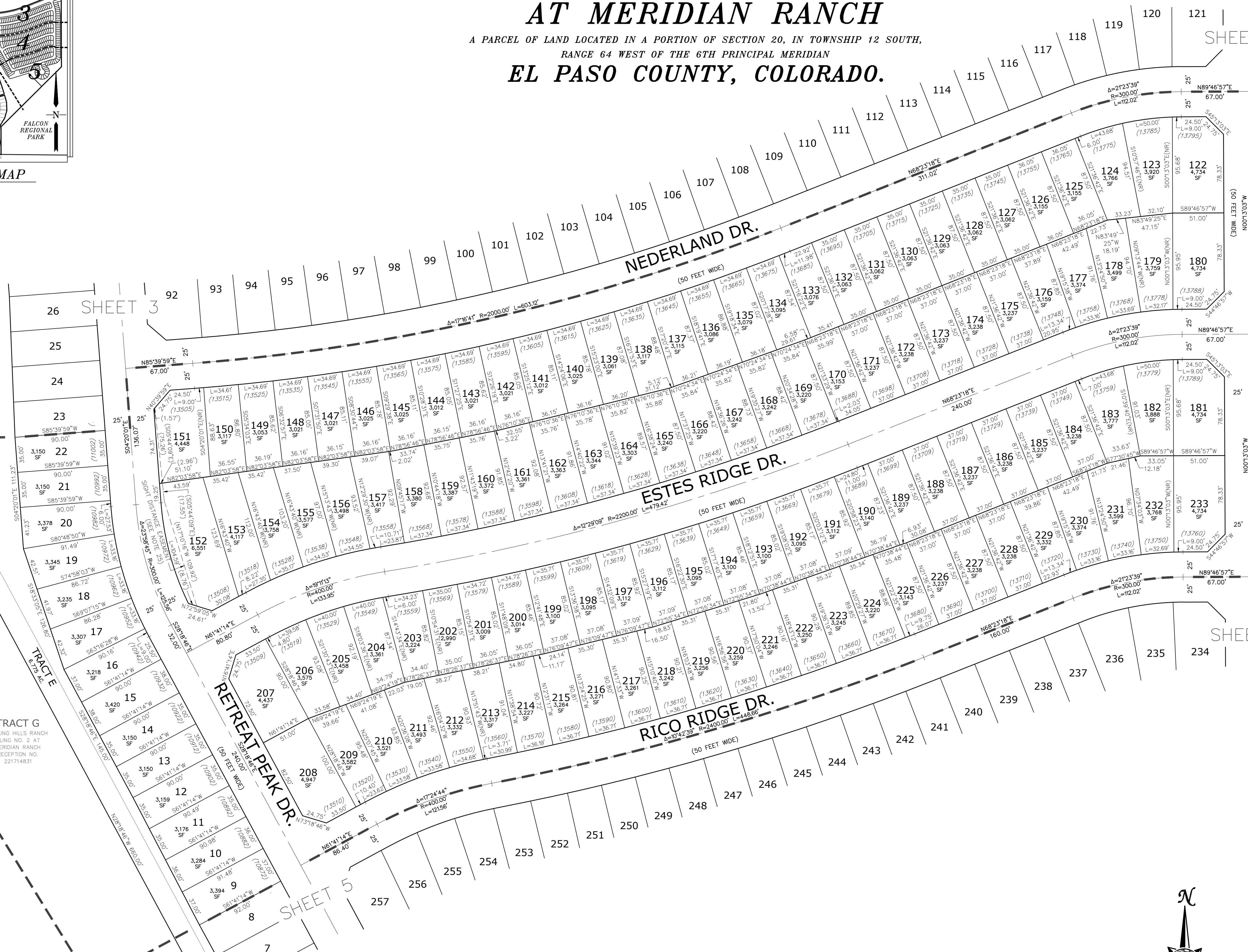
DRAWN BY: LCG DATE: JULY 2022
CHECKED BY: TAK SHEET: 3 OF 5
PCD PROJECT NO. SF-22-20

THE SANCTUARY FILING NO. 1 AT MERIDIAN RANCH

A PARCEL OF LAND LOCATED IN A PORTION OF SECTION 20, IN TOWNSHIP 12 SOUTH,
RANGE 64 WEST OF THE 6TH PRINCIPAL MERIDIAN
EL PASO COUNTY, COLORADO.

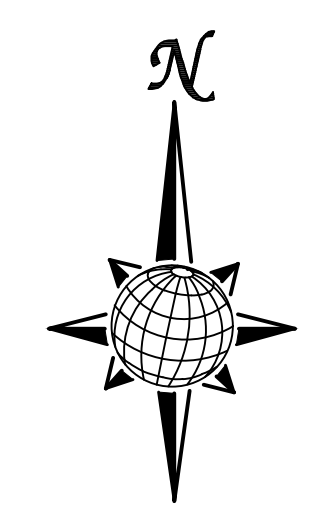


INDEX MAP
N.T.S.



290	291	292	293	294	295	296	297	298	299	300	301	302	303	304	305	306	307
90.00' N89°46'57"E L=9.00' (10987)	90.00' N89°46'57"E L=9.00' (10987)	90.00' N89°46'57"E L=9.00' (10987)	90.00' N89°46'57"E L=9.00' (10987)	90.00' N89°46'57"E L=9.00' (10987)	90.00' N89°46'57"E L=9.00' (10987)	90.00' N89°46'57"E L=9.00' (10987)	90.00' N89°46'57"E L=9.00' (10987)	90.00' N89°46'57"E L=9.00' (10987)	90.00' N89°46'57"E L=9.00' (10987)	90.00' N89°46'57"E L=9.00' (10987)	90.00' N89°46'57"E L=9.00' (10987)	90.00' N89°46'57"E L=9.00' (10987)	90.00' N89°46'57"E L=9.00' (10987)	90.00' N89°46'57"E L=9.00' (10987)	90.00' N89°46'57"E L=9.00' (10987)	90.00' N89°46'57"E L=9.00' (10987)	90.00' N89°46'57"E L=9.00' (10987)

UNPLATTED
FALCON REGIONAL PARK
RECEPTION NO. 214096227
(NOT A PART)



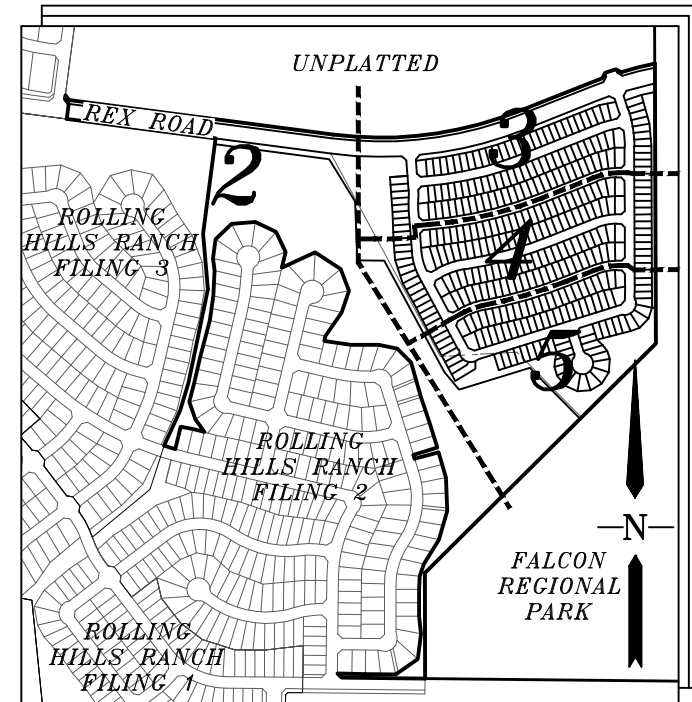
GRAPHIC SCALE
1 inch = 50 ft.

- LEGEND**
- = FOUND MONUMENT AS SHOWN
 - = FOUND #4 REBAR WITH CAP PLS 34583
 - = SET #4 REBAR W/CAP PLS 34583
 - NR = NON-RADIAL BEARING
 - (82.62') = EASEMENT OR NO-BUILD DIM.
 - (12345) = ADDRESS
 - = MATCHLINE

DRAWN BY: LCG DATE: JULY 2022
CHECKED BY: TAK SHEET: 4 OF 5
PCD PROJECT NO. SF-22-20

THE SANCTUARY FILING NO. 1 AT MERIDIAN RANCH

A PARCEL OF LAND LOCATED IN A PORTION OF SECTION 20, IN TOWNSHIP 12 SOUTH,
RANGE 64 WEST OF THE 6TH PRINCIPAL MERIDIAN
EL PASO COUNTY, COLORADO.



INDEX MAP
N.T.S.

SHEET 4

UNPLATTED

SHEET 4

SHEET 2

TRACT F
23.681 AC.

TRACT E
6.775 AC.

TRACT G
ROLLING HILLS RANCH
FILING NO. 2 AT
MERIDIAN RANCH
RECEPTION NO.
221714831

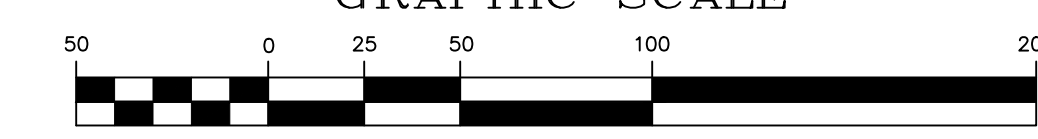
TRACT F
23.681 AC.

FALCON
REGIONAL PARK
RECEPTION NO.
214096227
(NOT A PART)

UNPLATTED



GRAPHIC SCALE



(IN FEET)
1 inch = 50 ft.

- LEGEND**
- = FOUND MONUMENT AS SHOWN
 - = FOUND #4 REBAR WITH CAP PLS 34583
 - = SET #4 REBAR W/CAP PLS 34583
 - NR = NON-RADIAL BEARING
 - (82.62') = EASEMENT OR NO-BUILD DIM.
 - (12345) = ADDRESS
 - = MATCHLINE

DRAWN BY: LCG DATE: JULY 2022
CHECKED BY: TAK SHEET: 5 OF 5
PCD PROJECT NO. SF-22-20