

Chuck Broerman
02/17/2022 02:31:44 PM
Doc \$0.00
Rec \$53.00

El Paso County, CO



5
Pages

222714914

SUBDIVISION/CONDOMINIUM PLAT

Reception Number	Date	Time
------------------	------	------

Reception Fee	Number of Pages	File Number
---------------	-----------------	-------------

Rolling Hills Ranch Filing NO.3 At Meridian Ranch
Name of Plat

GTL INC DBA GTL Development Inc
Owner's Name

Subdivision

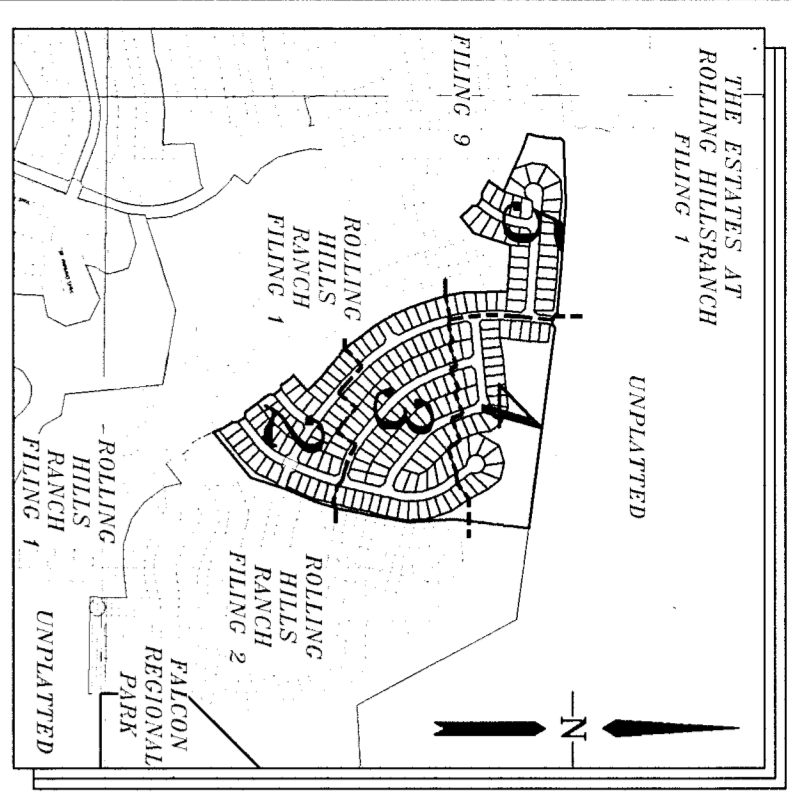
Condominium

ROLLING HILLS RANCH FILING NO. 3

14914

AT MERIDIAN RANCH EL PASO COUNTY, COLORADO.

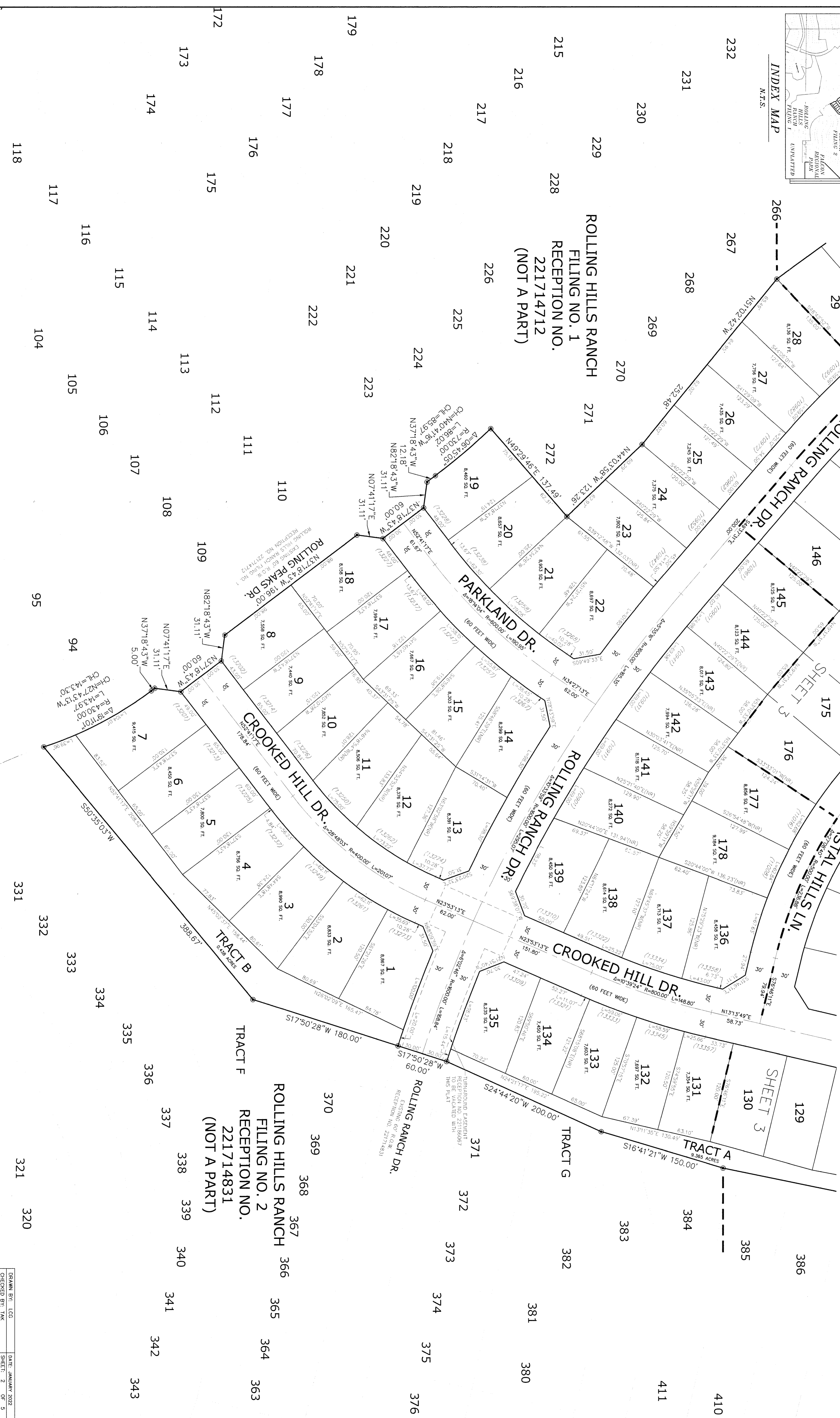
A PARCEL OF LAND LOCATED IN A PORTION OF SECTION 20, IN TOWNSHIP 12 SOUTH,
RANGE 64 WEST OF THE 6TH PRINCIPAL MERIDIAN

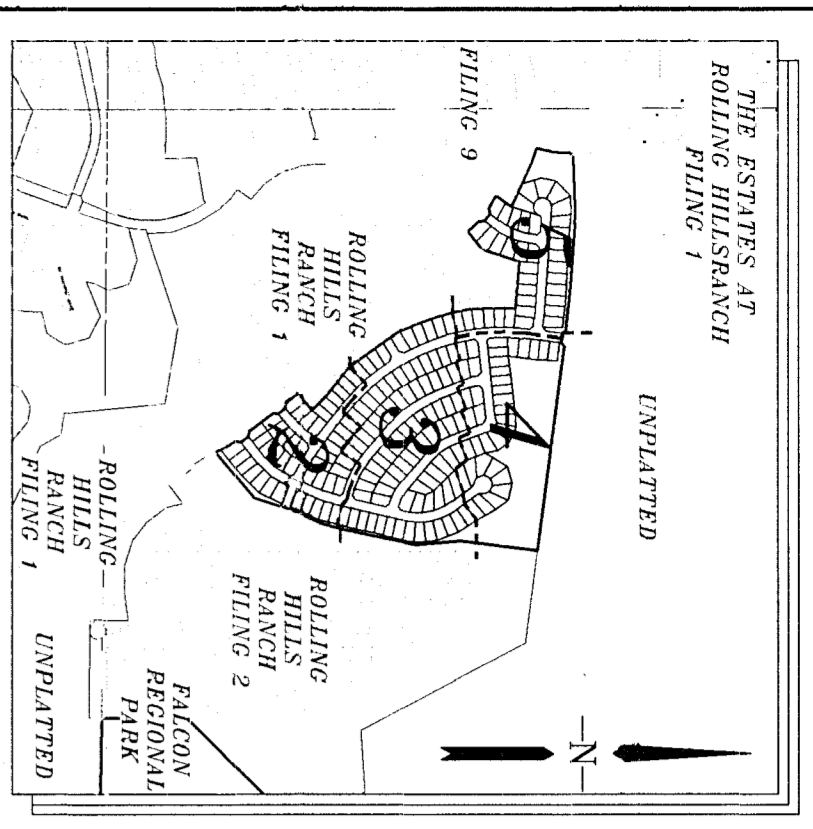


LEGEND

- = FOUND MONUMENT AS SHOWN
- = FOUND PA REBAR WITH CAP
- = SET PA REBAR W/CAP
- = SET PA REBAR W/CAP PLS 3/8x3
- = NON-RADIAL BEARING
- = EASEMENT OR NO-BUILD DM.
- = ADDRESS
- = MATICLINE

GRAPHIC SCALE
(IN FEET)
1 Inch = 50 Ft.



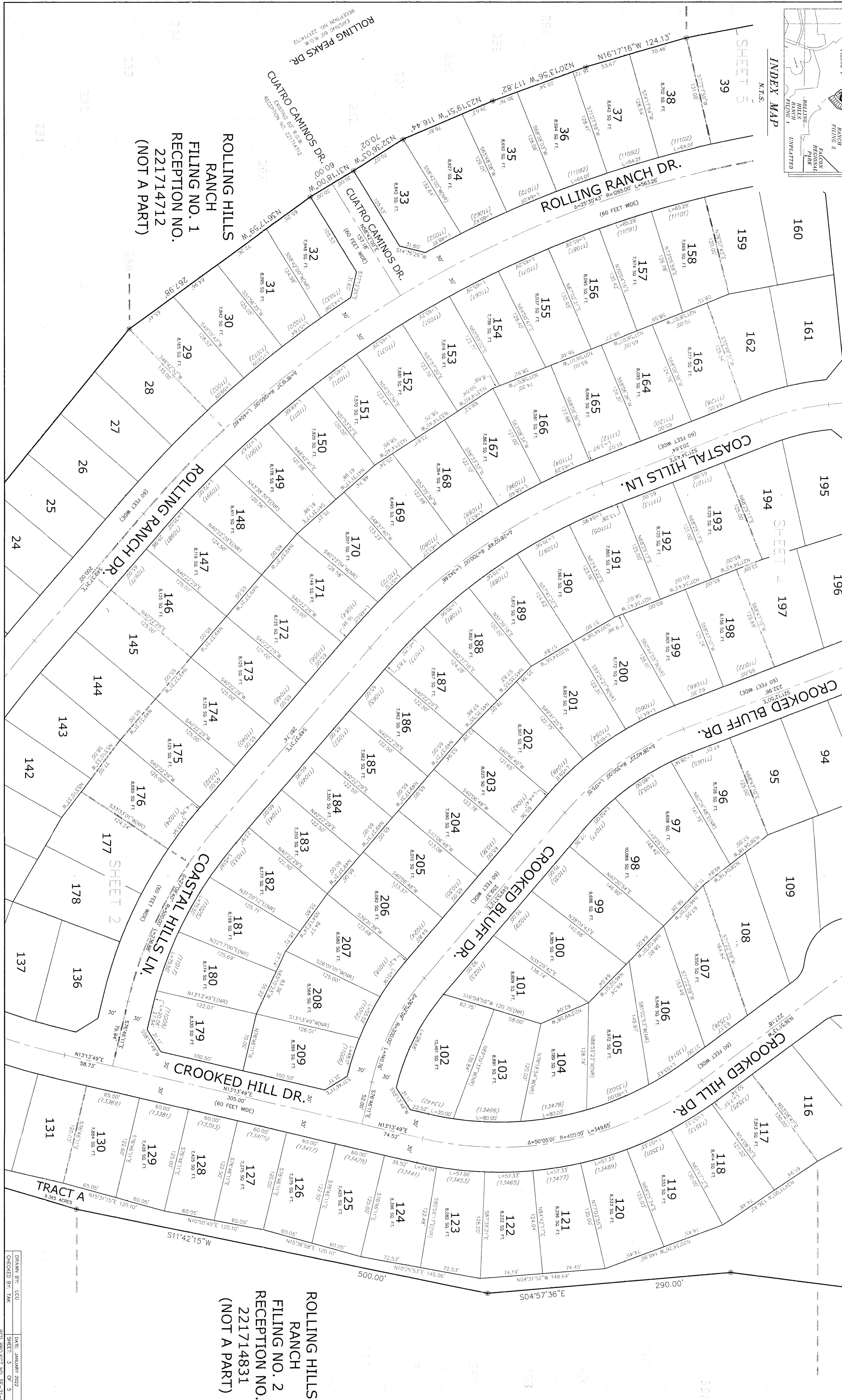
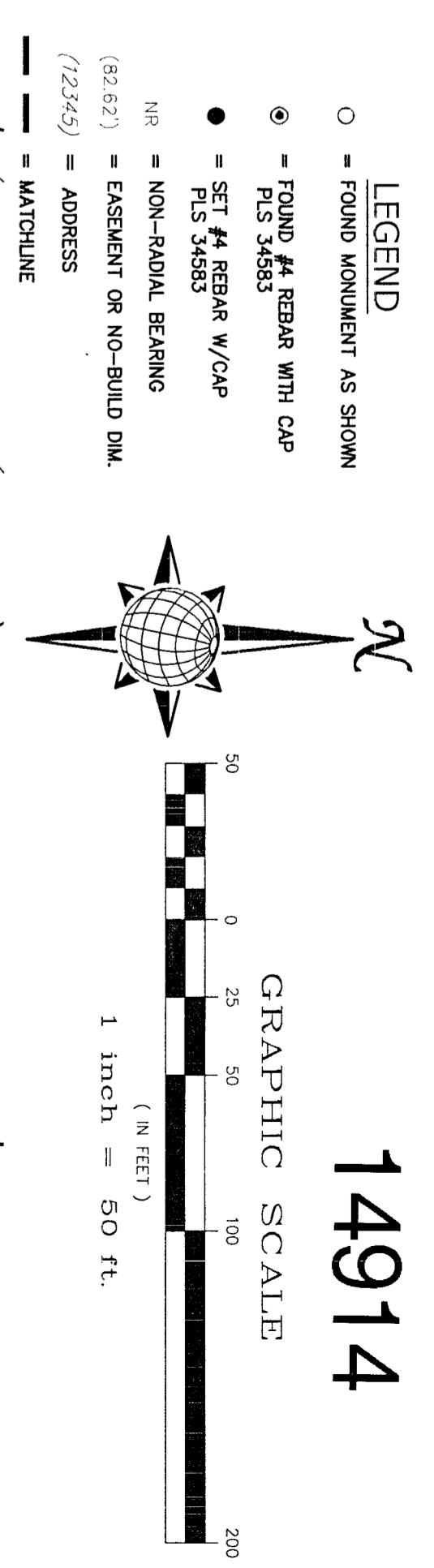


ROLLING HILLS RANCH FILING NO. 3

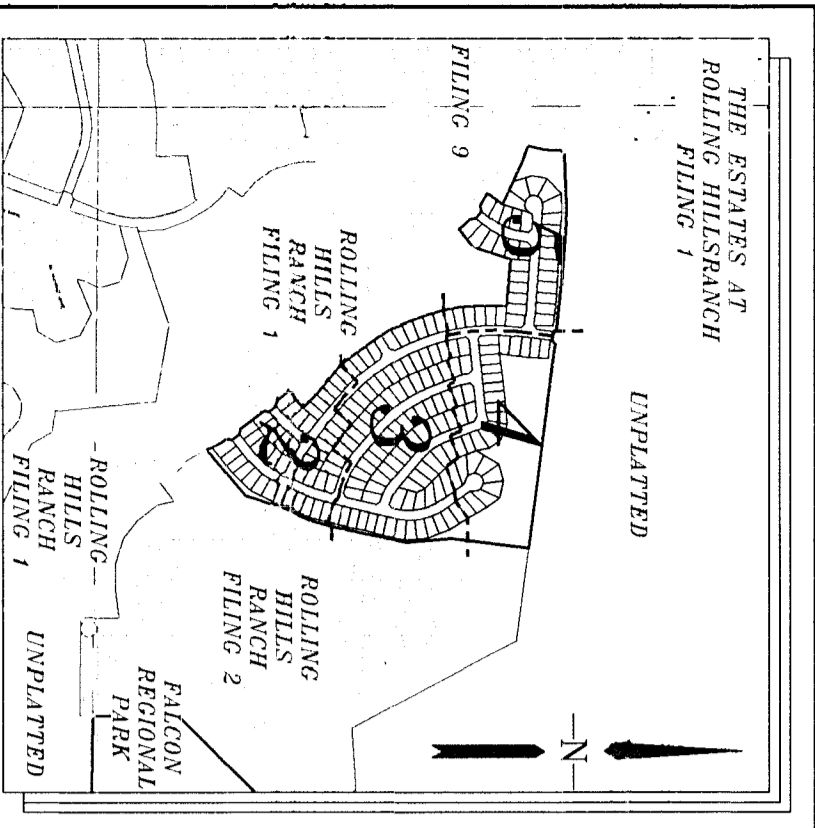
AT MERIDIAN RANCH

EL PASO COUNTY, COLORADO.

A PARCEL OF LAND LOCATED IN A PORTION OF SECTION 20, IN TOWNSHIP 12 SOUTH,
RANGE 64 WEST OF THE 6TH PRINCIPAL MERIDIAN



DRAWN BY: LCG	DATE: JANUARY 2022
CHECKED BY: TJK	SHEET: 5 OF 5
PDD PROJECT NO. SF-21-015	



ROLLING HILLS RANCH FILING NO. 3 AT MERIDIAN RANCH EL PASO COUNTY, COLORADO.

A PARCEL OF LAND LOCATED IN A PORTION OF SECTION 20, IN TOWNSHIP 12 SOUTH,
RANGE 64 WEST OF THE 6TH PRINCIPAL MERIDIAN

14914

LEGEND

- - FOUND MONUMENT AS SHOWN
- - FOUND MONUMENT WITH CAP
- - FOUND #4 REBAR WITH CAP
- - FOUND #4 REBAR W/ CAP
- - SET #4 REBAR W/ CAP
- - SET #4 REBAR
- - NON-RADIAL BEARING
- - EASEMENT OR NO-BUILD DM.
- - ADDRESS
- - MATRIALINE

GRAPHIC SCALE

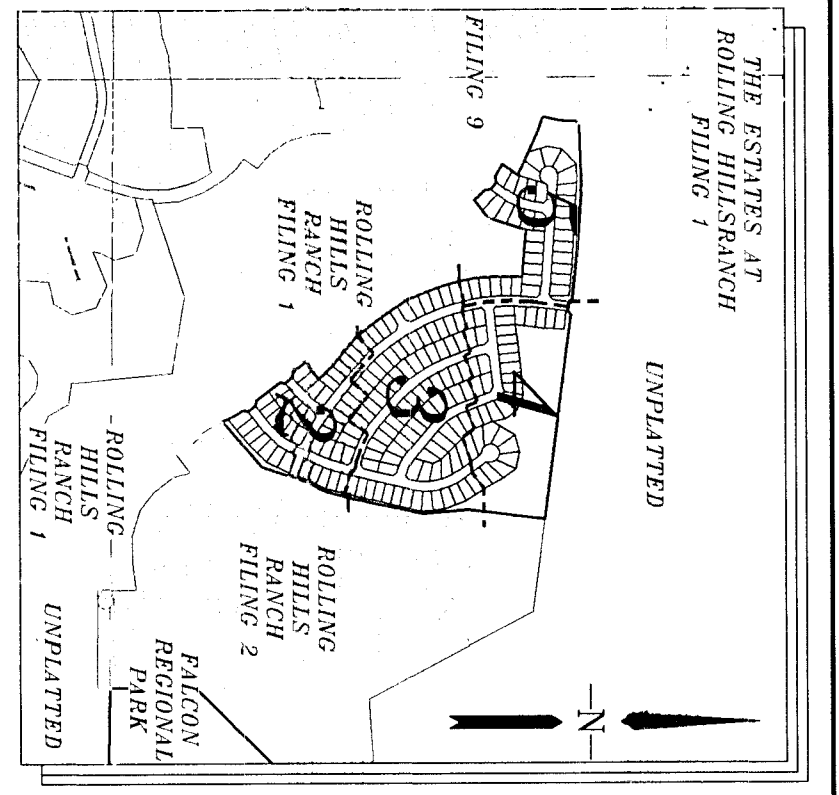
(IN FEET)

1 inch = 50 ft.



ROLLING HILLS
RANCH
FILING NO. 2
RECEPTION NO.
221714831
(NOT A PART)

DRAWN BY: LCO
CHECKED BY: TJK
DATE: JANUARY 2022
SHEET: 4 OF 5
P2D PROJECT NO. SF-21-016



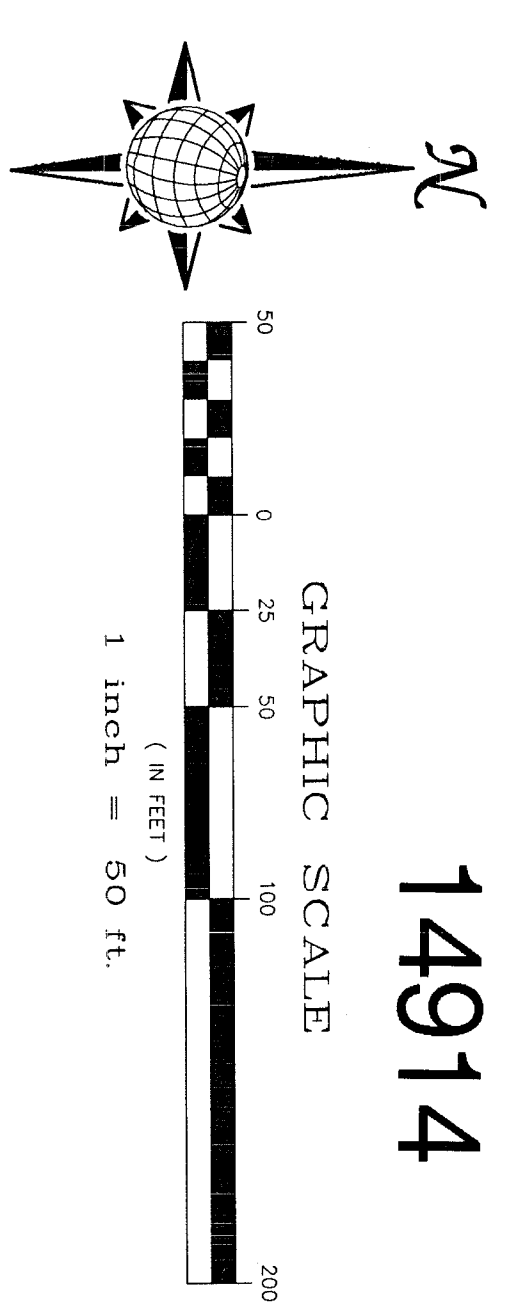
- LEGEND**
- FOUND MONUMENT AS SHOWN
 - FOUND #4 REBAR WITH CAP PLS 34583
 - SET #4 REBAR W/CAP PLS 34583
 - NON-RADIAL BEARING
 - (63.67) = EASEMENT OR NO-BUILD DIM. (123.45) = ADDRESS
 - MATCHLINE

ROLLING HILLS RANCH FILING NO. 3

AT MERIDIAN RANCH

A PARCEL OF LAND LOCATED IN A PORTION OF SECTION 20, IN TOWNSHIP 12 SOUTH, RANGE 64 WEST OF THE 6TH PRINCIPAL MERIDIAN
EL PASO COUNTY, COLORADO.

UNPLATTED



14914

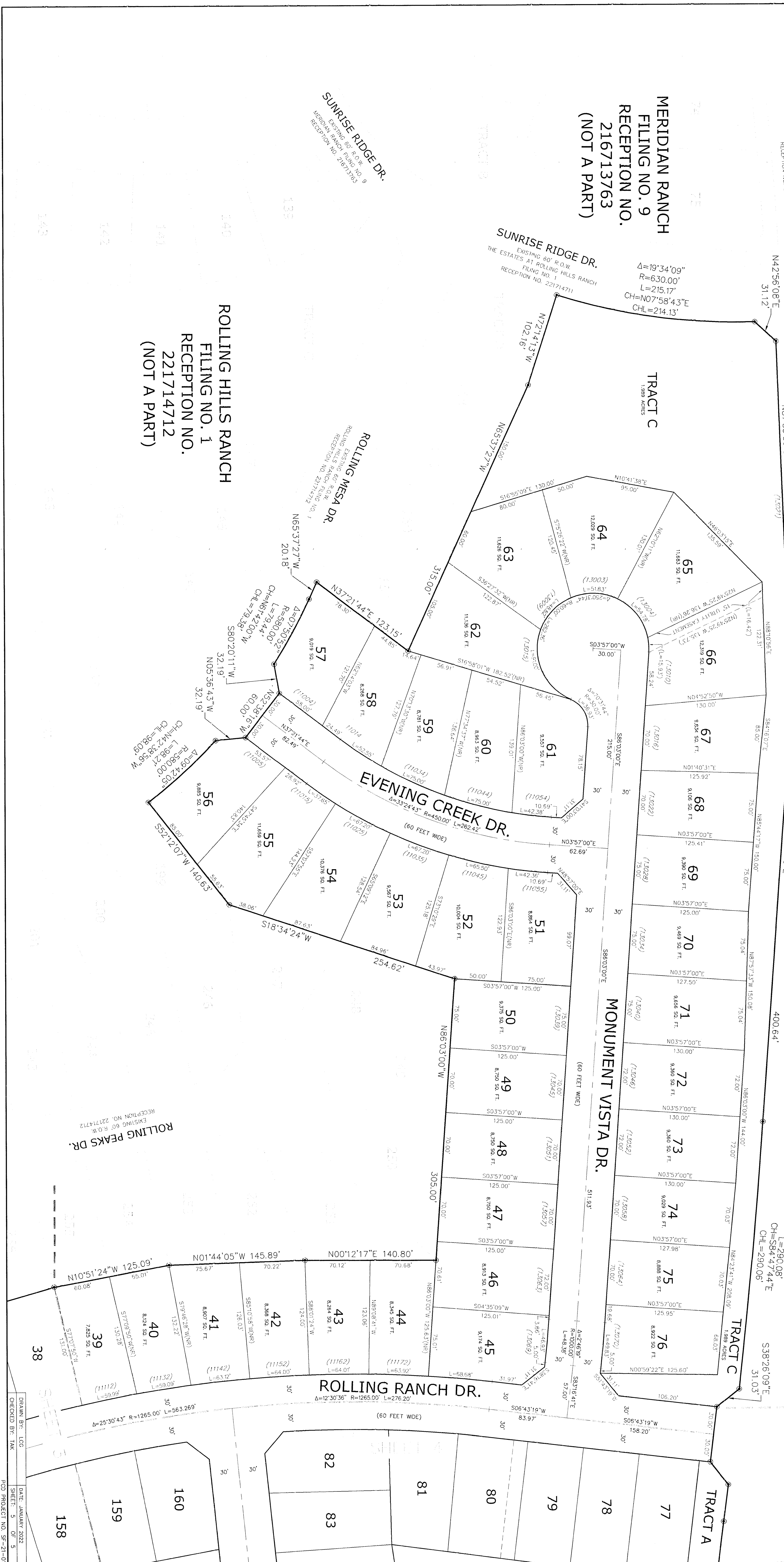
INDEX MAP

REX ROAD
EXISTING 60' R.O.W.
THE ESTATES AT ROLLING HILLS RANCH
FILING NO. 1
RECEPTION NO. 221714711

MERIDIAN RANCH
FILING NO. 9
RECEPTION NO.
216713763
(NOT A PART)

SUNRISE RIDGE DR.
EXISTING 60' R.O.W.
THE ESTATES AT ROLLING HILLS RANCH
FILING NO. 1
RECEPTION NO. 216713763

ROLLING HILLS RANCH
FILING NO. 1
RECEPTION NO.
221714712
(NOT A PART)



UNPLATTED