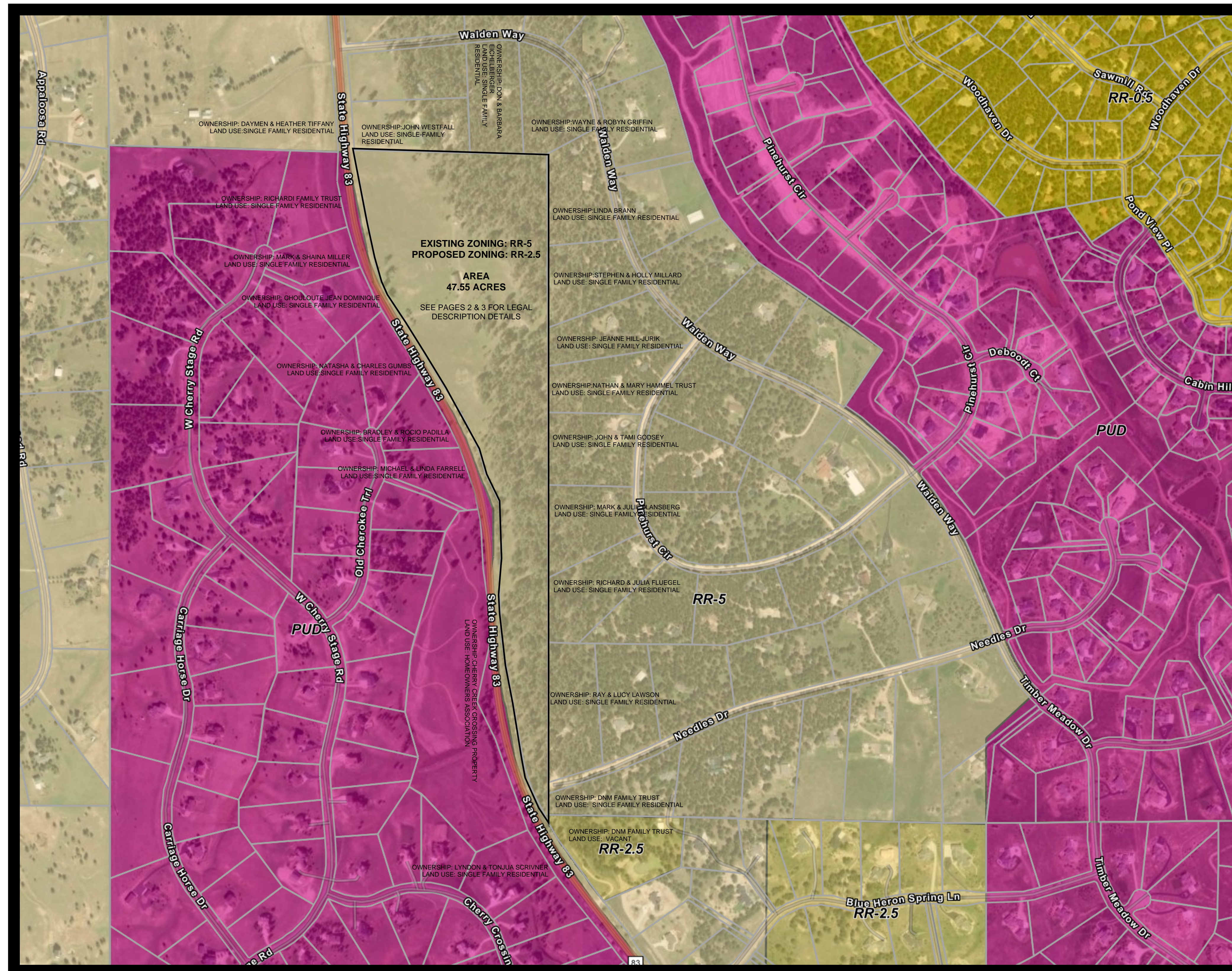


THE NORTH RANCH MAP AMENDMENT (REZONE)

Southwest quarter of Section 15 and the Southwest quarter of Section 22, Township 11 South, Range 66 West of the 6th P.M
El Paso County, State of Colorado



GENERAL NOTES

See page 2 for graphical depiction of legal description.
See page 3 for written legal description and easements.

NO.	REVISION/ISSUE	DATE

The North Ranch, LLC
944 Cheyenne Blvd
Colorado Springs Co 80905
rob@myerscompany.biz

VERTEX
Consulting Services
455 E. Pikes Peak Avenue, Suite 101
Colorado Springs, Colorado 80903
719-733-8605

PROJECT NO.	SHEET
DATE	1 of 3
PREPARED	
APPROVED	CAD

