
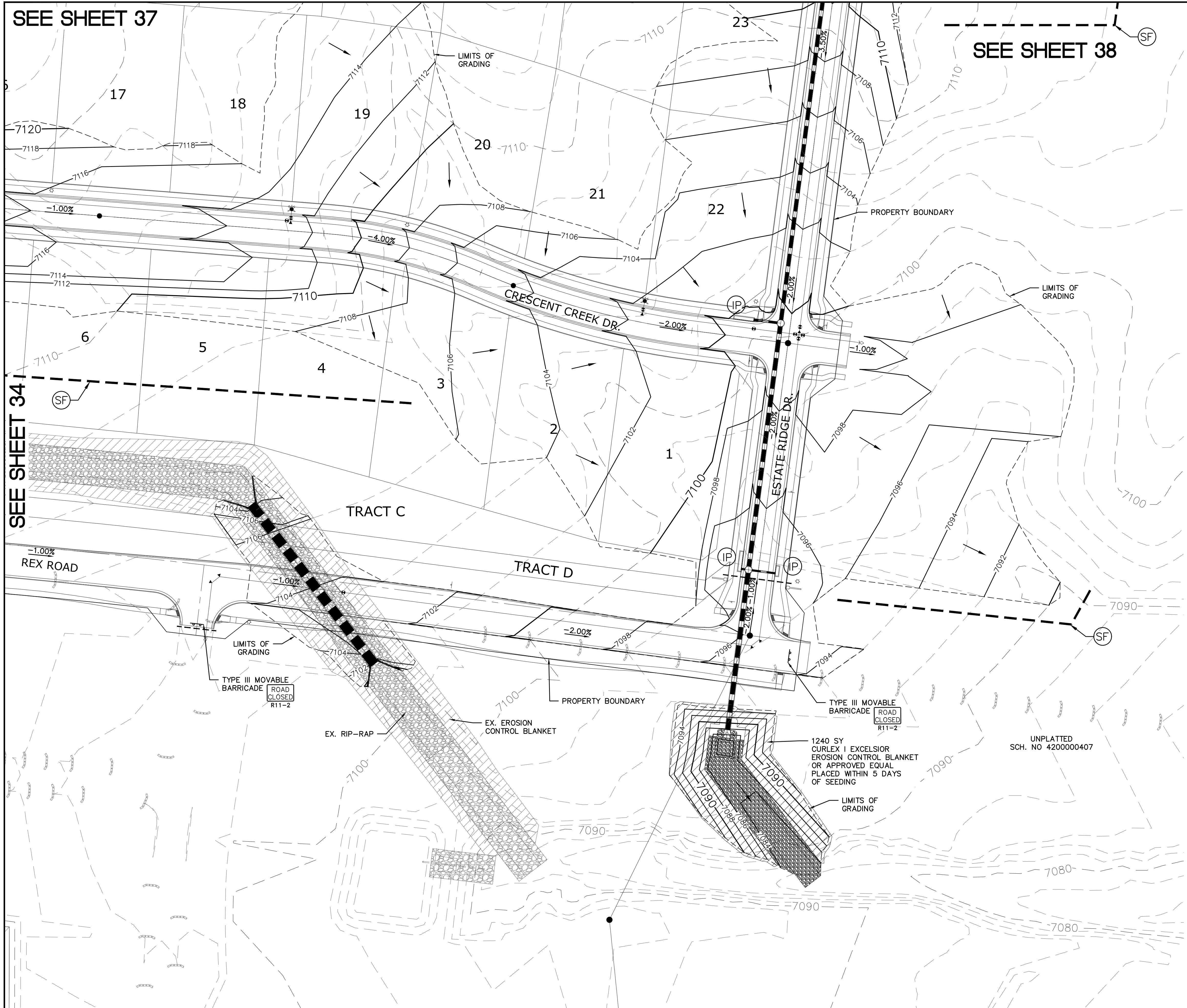


1. STORMWATER DISCHARGES FROM CONSTRUCTION SITES SHALL NOT CAUSE OR THREATEN TO CAUSE POLLUTION, CONTAMINATION, OR DEGRADATION OF STATE WATERS. ALL WORK AND EARTH DISTURBANCE SHALL BE DONE IN A MANNER THAT MINIMIZES POLLUTION OF ANY ON-SITE OR OFF-SITE WATERS, INCLUDING WETLANDS.
2. NOTWITHSTANDING ANYTHING DEPICTED IN THESE PLANS IN WORDS OR GRAPHIC REPRESENTATION, ALL DESIGN AND CONSTRUCTION RELATED TO ROADS, STORM DRAINAGE AND EROSION CONTROL SHALL CONFORM TO THE STANDARDS AND REQUIREMENTS OF THE MOST RECENT VERSION OF THE RELEVANT ADOPTED EL PASO COUNTY STANDARDS, INCLUDING THE LAND DEVELOPMENT CODE, THE ENGINEERING CRITERIA MANUAL, THE DRAINAGE CRITERIA MANUAL, AND THE DRAINAGE CRITERIA MANUAL VOLUME 2. ANY DEVIATIONS TO REGULATIONS AND STANDARDS MUST BE REQUESTED, AND APPROVED, IN WRITING.
3. A SEPARATE STORMWATER MANAGEMENT PLAN (SWMP) FOR THIS PROJECT SHALL BE COMPLETED AND AN EROSION AND STORMWATER QUALITY CONTROL PERMIT (ESQCP) ISSUED PRIOR TO COMMENCING CONSTRUCTION. MANAGEMENT OF THE SWMP DURING CONSTRUCTION IS THE RESPONSIBILITY OF THE DESIGNATED QUALIFIED STORMWATER MANAGER OR CERTIFIED EROSION CONTROL INSPECTOR. THE SWMP SHALL BE LOCATED ON SITE AT ALL TIMES AND SHALL BE KEPT UP TO DATE WITH WORK PROGRESS AND CHANGES IN THE FIELD.
4. ONCE THE ESQCP IS APPROVED AND A "NOTICE TO PROCEED" HAS BEEN ISSUED, THE CONTRACTOR MAY INSTALL THE INITIAL STAGE EROSION AND SEDIMENT CONTROL MEASURES AS INDICATED ON THE APPROVED GEC. A PRECONSTRUCTION MEETING BETWEEN THE CONTRACTOR, ENGINEER, AND EL PASO COUNTY WILL BE HELD PRIOR TO ANY CONSTRUCTION. IT IS THE RESPONSIBILITY OF THE APPLICANT TO COORDINATE THE MEETING TIME AND PLACE WITH COUNTY STAFF.
5. CONTROL MEASURES MUST BE INSTALLED PRIOR COMMENCEMENT OF ACTIVITIES THAT COULD CONTRIBUTE POLLUTANTS TO STORMWATER. CONTROL MEASURES FOR ALL SLOPES, CHANNELS, DITCHES, AND DISTURBED LAND AREAS SHALL BE INSTALLED IMMEDIATELY UPON COMPLETION OF THE DISTURBANCE.
6. ALL TEMPORARY SEDIMENT AND EROSION CONTROL MEASURES SHALL BE MAINTAINED AND REMAIN IN EFFECTIVE OPERATING CONDITION UNTIL PERMANENT SOIL EROSION CONTROL MEASURES ARE IMPLEMENTED AND FINAL STABILIZATION IS ACHIEVED. ALL PERSONS ENGAGED IN LAND DISTURBANCE ACTIVITIES SHALL ASSESS THE ADVANCY OF CONTROL MEASURES AT THE SITE AND IDENTIFY IF CHANGES TO THOSE CONTROL MEASURES ARE NEEDED TO ENSURE THE CONTINUED EFFECTIVE PERFORMANCE OF THE CONTROL MEASURES. ALL CHANGES TO TEMPORARY SEDIMENT AND EROSION CONTROL MEASURES MUST BE INCORPORATED INTO THE STORMWATER MANAGEMENT PLAN.
7. TEMPORARY STABILIZATION SHALL BE IMPLEMENTED ON DISTURBED AREAS AND STOCKPILES WHERE GROUND DISTURBING CONSTRUCTION ACTIVITY HAS PERMANENTLY CEASED OR TEMPORARILY CEASED FOR LONGER THAN 14 DAYS.
8. FINAL STABILIZATION MUST BE IMPLEMENTED AT ALL APPLICABLE CONSTRUCTION SITES. FINAL STABILIZATION IS ACHIEVED WHEN ALL GROUND DISTURBING ACTIVITIES ARE COMPLETE AND ALL DISTURBED AREAS EITHER HAVE A UNIFORM VEGETATIVE COVER WITH INDIVIDUAL PLANT DENSITY OF 70 PERCENT OF PRE-DISTURBANCE LEVELS ESTABLISHED OR EQUIVALENT PERMANENT ALTERNATIVE STABILIZATION METHOD IS IMPLEMENTED. ALL TEMPORARY SEDIMENT AND EROSION CONTROL MEASURES SHALL BE REMOVED UPON FINAL STABILIZATION AND BEFORE PERMIT CLOSURE.
9. ALL PERMANENT STORMWATER MANAGEMENT FACILITIES SHALL BE INSTALLED AS DESIGNED IN THE APPROVED PLANS. ANY PROPOSED CHANGES THAT EFFECT THE DESIGN OR FUNCTION OF PERMANENT STORMWATER MANAGEMENT STRUCTURES MUST BE APPROVED BY THE ECM ADMINISTRATOR PRIOR TO IMPLEMENTATION.
10. EARTH DISTURBANCES SHALL BE CONDUCTED IN SUCH A MANNER SO AS TO EFFECTIVELY MINIMIZE ACCELERATED SOIL EROSION AND RELEVANT SEDIMENTATION. LAND DISTURBANCES SHALL BE DESIGNED, CONSTRUCTED, AND COMPLETED SO THAT THE EXPOSED AREA OF ANY DISTURBED LAND SHALL BE LIMITED TO THE SHORTEST PRACTICAL PERIOD OF TIME. PRE-EXISTING VEGETATION SHALL BE PROTECTED AND MAINTAINED WITHIN 50 HORIZONTAL FEET OF A WATERS OF THE STATE UNLESS SHOWN TO BE INFEASIBLE AND SPECIFICALLY REQUESTED AND APPROVED.
11. COMPACTION OF SOIL MUST BE PREVENTED IN AREAS DESIGNATED FOR INFILTRATION CONTROL MEASURES OR WHERE FINAL STABILIZATION WILL BE ACHIEVED BY VEGETATIVE COVER. AREAS DESIGNATED FOR INFILTRATION CONTROL MEASURES SHALL ALSO BE PROTECTED FROM SEDIMENTATION DURING CONSTRUCTION UNTIL FINAL STABILIZATION IS ACHIEVED. IF COMPACTION PREVENTION IS NOT FEASIBLE DUE TO SITE CONSTRAINTS, ALL AREAS DESIGNATED FOR INFILTRATION AND VEGETATION CONTROL MEASURES MUST BE LOOSENEED PRIOR TO INSTALLATION OF THE CONTROL MEASURE(S).
12. ANY TEMPORARY OR PERMANENT FACILITY DESIGNED AND CONSTRUCTED FOR THE CONVEYANCE OF STORMWATER AROUND, THROUGH, OR FROM THE EARTH DISTURBANCE AREA SHALL BE A STABILIZED CONVEYANCE DESIGNED TO MINIMIZE EROSION AND THE DISCHARGE OF SEDIMENT OFF SITE.
13. CONCRETE WASH WATER SHALL BE CONTAINED AND DISPOSED OF IN ACCORDANCE WITH THE SWMP. NO WASH WATER SHALL BE DISCHARGED TO OR ALLOWED TO ENTER STATE WATERS, INCLUDING ANY SURFACE OR SUBSURFACE STORM DRAINAGE SYSTEM OR FACILITIES. CONCRETE WASHOUTS SHALL NOT BE LOCATED IN AN AREA WHERE SHALLOW GROUNDWATER MAY BE PRESENT, OR WITHIN 50 FEET OF A SURFACE WATER BODY, CREEK OR STREAM.
14. DURING DEWATERING OPERATIONS OF UNCONTAMINATED GROUND WATER MAY BE DISCHARGED ON SITE, BUT SHALL NOT LEAVE THE SITE IN THE FORM OF SURFACE RUNOFF UNLESS AN APPROVED STATE DEWATERING PERMIT IS IN PLACE.
15. EROSION CONTROL BLANKETING OR OTHER PROTECTIVE COVERING SHALL BE USED ON SLOPES STEEPER THAN 3:1.
16. CONTRACTOR SHALL BE RESPONSIBLE FOR THE REMOVAL OF ALL WASTES FROM THE CONSTRUCTION SITE FOR DISPOSAL IN ACCORDANCE WITH LOCAL AND STATE REGULATORY REQUIREMENTS. NO CONSTRUCTION DEBRIS, TREE SLASH, BUILDING MATERIAL WASTES OR UNUSED BUILDING MATERIALS SHALL BE BURIED, DUMPED, OR DISCHARGED AT THE SITE.
17. WASTE MATERIALS SHALL NOT BE TEMPORARILY PLACED OR STORED IN THE STREET, ALLEY, OR OTHER PUBLIC WAY, UNLESS IN ACCORDANCE WITH AN APPROVED TRAFFIC CONTROL PLAN. CONTROL MEASURES MAY BE REQUIRED BY EL PASO COUNTY ENGINEERING IF DEEMED NECESSARY, BASED ON SPECIFIC CONDITIONS AND CIRCUMSTANCES.
18. TRACKING OF SOILS AND CONSTRUCTION DEBRIS OFF-SITE SHALL BE MINIMIZED. MATERIALS TRACKED OFF-SITE SHALL BE CLEANED UP AND PROPERLY DISPOSED OF IMMEDIATELY.
19. THE OWNER/DEVELOPER SHALL BE RESPONSIBLE FOR THE REMOVAL OF ALL CONSTRUCTION DEBRIS, DIRT, TRASH, ROCK, SEDIMENT, SOIL, AND SAND THAT MAY ACCUMULATE IN ROADS, STORM DRAINS AND OTHER DRAINAGE CONVEYANCE SYSTEMS AND STORMWATER APPURTENANCES AS A RESULT OF SITE DEVELOPMENT.
20. THE QUANTITY OF MATERIALS STORED ON THE PROJECT SITE SHALL BE LIMITED, AS MUCH AS PRACTICAL, TO THAT QUANTITY REQUIRED TO PERFORM THE WORK IN AN ORDERLY SEQUENCE. ALL MATERIALS STORED ON-SITE SHALL BE STORED IN A NEAT, ORDERLY MANNER, IN THEIR ORIGINAL CONTAINERS, WITH ORIGINAL MANUFACTURER'S LABELS.
21. NO CHEMICAL(S) HAVING THE POTENTIAL TO BE RELEASED IN STORMWATER ARE TO BE STORED OR USED ON-SITE UNLESS PERMISSION FOR THE USE OF SUCH CHEMICAL(S) IS GRANTED IN WRITING BY THE ECM ADMINISTRATOR. IN GRANTING APPROVAL FOR THE USE OF SUCH CHEMICAL(S), SPECIAL CONDITIONS AND MONITORING MAY BE REQUIRED.
22. BULK STORAGE OF ALLOWED PETROLEUM PRODUCTS OR OTHER ALLOWED LIQUID CHEMICALS IN EXCESS OF 55 GALLONS SHALL REQUIRE ADEQUATE SECONDARY CONTAINMENT PROTECTION TO CONTAIN ALL SPILLS ON-SITE AND TO PREVENT ANY LIQUID MATERIALS FROM ENTERING STATE WATERS, ANY SURFACE OR SUBSURFACE STORM DRAINAGE SYSTEM OR OTHER FACILITIES.
23. NO PERSON SHALL CAUSE THE IMPEDIMENT OF STORMWATER FLOW IN THE CURB AND GUTTER OR DITCH EXCEPT WITH APPROVED SEDIMENT CONTROL MEASURES.
24. OWNER/DEVELOPER AND THEIR AGENTS SHALL COMPLY WITH THE "COLORADO WATER QUALITY CONTROL ACT" (TITLE 25 ARTICLE 8, CRS), AND THE "CLEAN WATER ACT" (33 USC 1344), IN ADDITION TO THE REQUIREMENTS OF THE LAND DEVELOPMENT CODE, DCM VOLUME II AND THE ECM APPENDIX I. ALL APPROPRIATE PERMITS MUST BE OBTAINED BY THE CONTRACTOR PRIOR TO CONSTRUCTION (1041, NPDES, FLOODPLAIN, 404, FUGITIVE DUST, ETC.). IN THE EVENT OF CONFLICTS BETWEEN THESE REQUIREMENTS AND OTHER LAWS, RULES, OR REGULATIONS OF OTHER FEDERAL, STATE, LOCAL, OR COUNTY AGENCIES, THE MOST RESTRICTIVE LAWS, RULES, OR REGULATIONS SHALL APPLY.
25. ALL CONSTRUCTION TRAFFIC MUST ENTER/EXIT THE SITE ONLY AT APPROVED CONSTRUCTION ACCESS POINTS.
26. PRIOR TO CONSTRUCTION THE PERMITTEE SHALL VERIFY THE LOCATION OF EXISTING UTILITIES.
27. A WATER SOURCE SHALL BE AVAILABLE ON SITE DURING EARTHWORK OPERATIONS AND SHALL BE UTILIZED AS REQUIRED TO MINIMIZE DUST FROM EARTHWORK EQUIPMENT AND WIND.
28. THE SOILS REPORT FOR THIS SITE HAS BEEN PREPARED BY ENTECH ENGINEERING, INC. AND SHALL BE CONSIDERED A PART OF THESE PLANS.
29. AT LEAST TEN DAYS PRIOR TO THE ANTICIPATED START OF CONSTRUCTION, FOR PROJECTS THAT WILL DISTURB ONE (1) ACRE OR MORE, THE OWNER OR OPERATOR OF CONSTRUCTION ACTIVITY SHALL SUBMIT A PERMIT APPLICATION FOR STORMWATER DISCHARGE TO THE COLORADO DEPARTMENT OF PUBLIC HEALTH AND ENVIRONMENT, WATER QUALITY DIVISION. THE APPLICATION CONTAINS CERTIFICATION OF COMPLETION OF A STORMWATER MANAGEMENT PLAN (SWMP), OF WHICH THIS GRADING AND EROSION CONTROL PLAN MAY BE A PART. FOR INFORMATION OR APPLICATION MATERIALS' CONTACT:

COLORADO DEPARTMENT OF PUBLIC HEALTH AND ENVIRONMENT
WATER QUALITY CONTROL DIVISION
WQCD - PERMITS
4300 CHERRY CREEK DRIVE SOUTH
DENVER, CO 80246-1530
ATTN: PERMITS UNIT

<div>Scale</div> <div>AS SHOWN</div> <div>33 of 44</div>	<div>Drawn by</div> <div>LOG</div>	<div>THE ESTATES AT ROLLING HILLS RANCH FILING 2 GRADING-EROSION CONTROL PLAN</div>	<div></div> <div>MERIDIAN RANCH</div>	<div>TECH CONTRACTORS 11886 STAPLETON DRIVE FALCON, CO 80831 TELEPHONE: 719.495.7444 FAX: 719.495.2457</div>	1	-					
	<div>Checked by</div> <div>TAK</div>				2	-					
		<div>Date</div> <div>MARCH 2020</div>			3	-					
						4	-				
								No.	Revisions	Date	Init.



ROLLING HILLS RANCH FILING 1
ESTATES FILING 2 + 3
FILING 9
ROLLING HILLS RANCH FILING 1

39 40 41
36 37 38
34 35

UNPLATTED

INDEX MAP

N.T.S.

LEGEND

SYMBOL	ACRONYM	DESCRIPTION
		STRAW BALES
		EROSION WATTLES PER DETAIL SHEET 44
		EROSION CONTROL BLANKET PER DETAIL ECB-1 & ECB-2 DCM VOL. 2
		RCP REINFORCED CONCRETE PIPE
	(SF)	SILT FENCE PER DETAIL SF-1, SF-2 & SF-3 DCM VOL. 2
	(VTC)	VEHICLE TRACKING CONTROL PER DETAIL VT-2 DCM VOL. 2
	(IP)	INLET PROTECTION PER DETAIL SHEET 44
		EXISTING CONTOUR (10')
		EXISTING CONTOUR (2')
		PROPOSED CONTOUR (10')
		PROPOSED CONTOUR (2')
		GRADE
		LOT NUMBER

GRAPHIC SCALE

50 0 25 50 100 200

(IN FEET)

1 inch = 50 ft.

NOTE:

ALL CONTOURS SHOWN WITHIN THE PLAN SET ARE TO FINISHED SURFACE. ALL STREET SECTIONS ARE TO BE GRADED TO ROUGH SUB-GRADE AS SHOWN IN THEIR RESPECTIVE TYPICAL STREET SECTION SHOWN ON SHEET 43.

CONTRACTOR SHALL PROTECT ALL EXISTING UTILITIES.

EX. UTILITIES SEE CONSTRUCTION DRAWINGS FOR:

1)ESTATES FILING 2 AT MERIDIAN RANCH

2)ESTATES FILING 3 AT MERIDIAN RANCH

3)GUTHRIE RAW WATER EXTENSION THE VISTAS FILING 1 OFFSITE

4)MERIDIAN RANCH FILING 9

5)LONDONDERRY DRIVE/LAMBERT ROAD CONSTRUCTION DRAWINGS

6)MSMD PUMP STATION AND WATER TANK WATER TRANSMISSION LINES AND ROAD

7)THE ESTATES AT ROLLING HILLS RANCH FILING 1

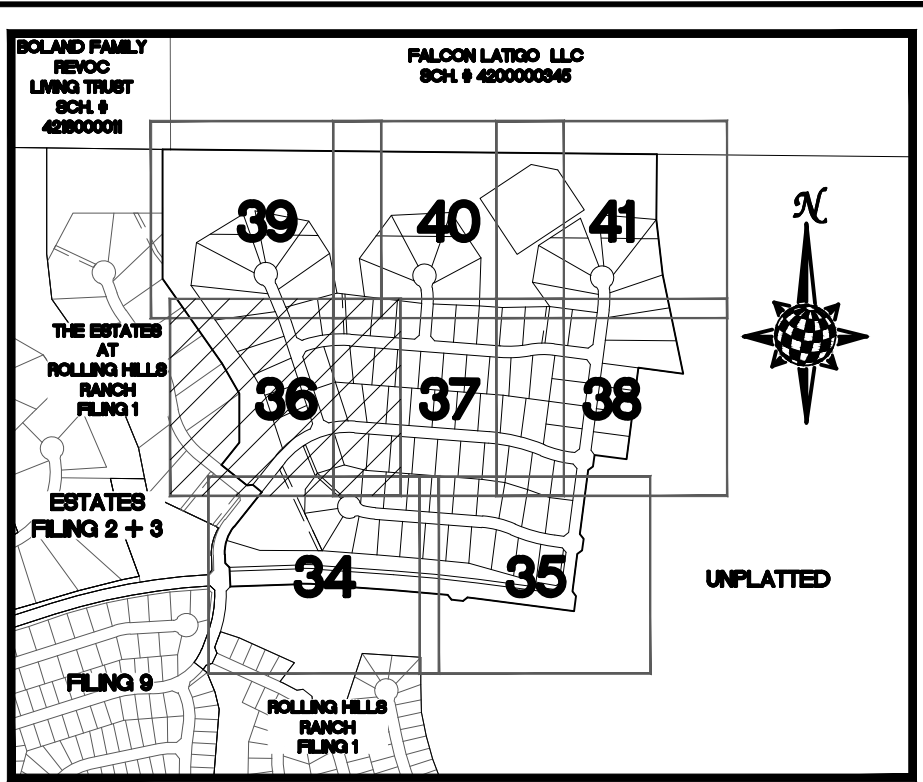
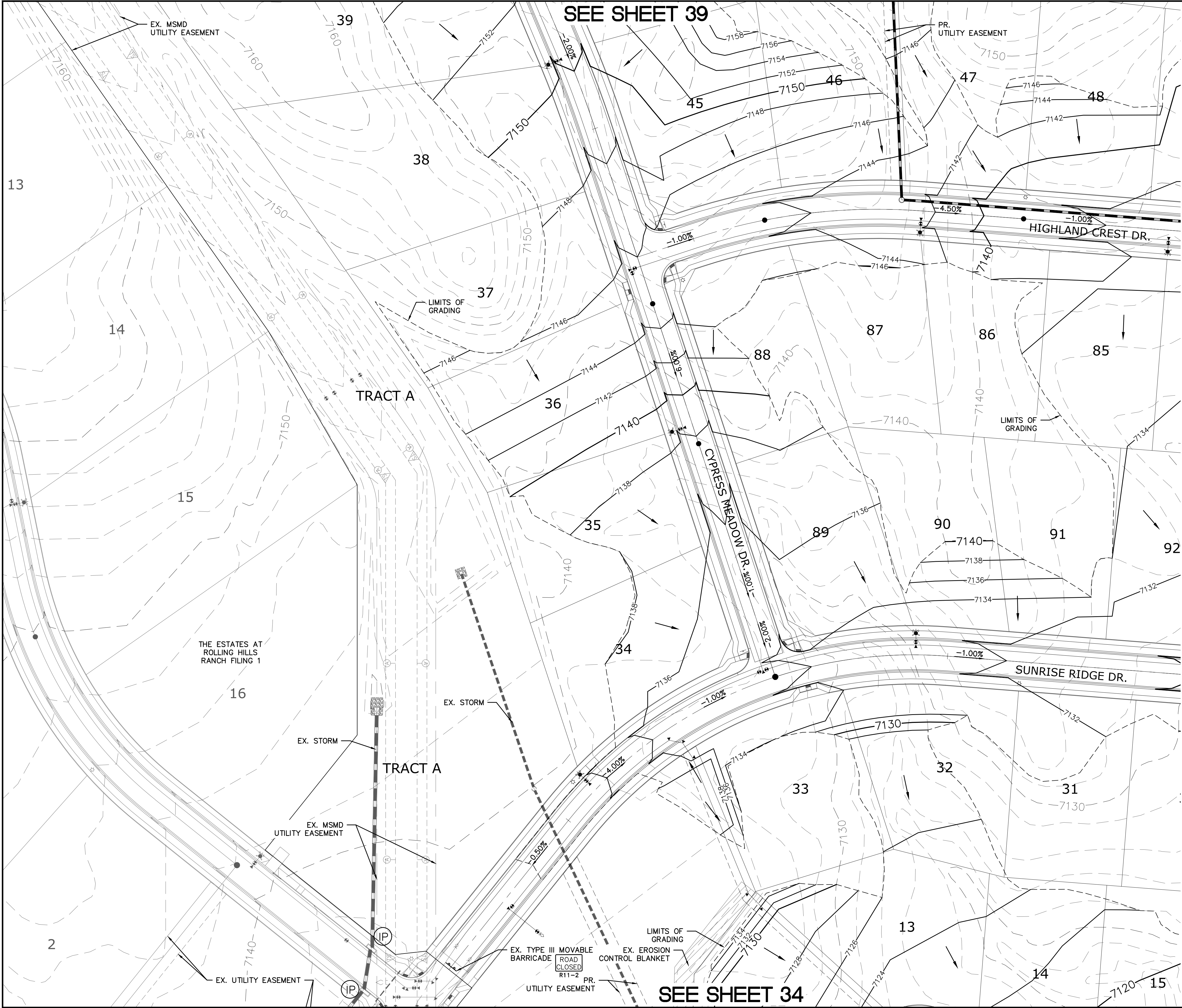
8)ROLLING HILLS RANCH FILING 1

TWO WORKING DAYS
BEFORE YOU DIG
CALL 811

OR
UTILITY NOTIFICATION CENTER OF COLORADO
1-800-922-1987
(SEE COVER FOR LIST OF UTILITY CONTACTS)

				Date	Appr.
				Date	Init.
				Revisions	
1	2	3	4	No.	
TECH CONTRACTORS 11886 STAPLETON DRIVE FALCON, CO 80831 TELEPHONE 719.495.7444 FAX 719.495.2457					
<div></div> <div>MERIDIAN RANCH</div>					
THE ESTATES AT ROLLING HILLS RANCH FILING 2 GRADING-EROSION CONTROL PLAN GRADING LAYOUT					
Scale	Drawn by	Log	Checked by	TAK	Date
AS SHOWN					MARCH 2020
35 of 44					

S:\architect\cadd\plansets at Rolling Hills Filing 2\DWG\PLAN SHEETS\IMPROVEMENT PLANS\G.LAYOUT.dwg, 3/24/2020 8:58:17 AM



INDEX MAP
N.T.S.

LEGEND

SYMBOL ACRONYM DESCRIPTION

STRAW BALES

EROSION WATTLES
PER DETAIL SHEET 44

EROSION CONTROL BLANKET
PER DETAIL ECB-1 & ECB-2
DCM VOL. 2

RCP REINFORCED CONCRETE PIPE

SILT FENCE PER DETAIL SF-1, SF-2
& SF-3 DCM VOL. 2

VEHICLE TRACKING CONTROL PER
DETAIL VT-2 DCM VOL. 2

INLET PROTECTION PER
DETAIL SHEET 44

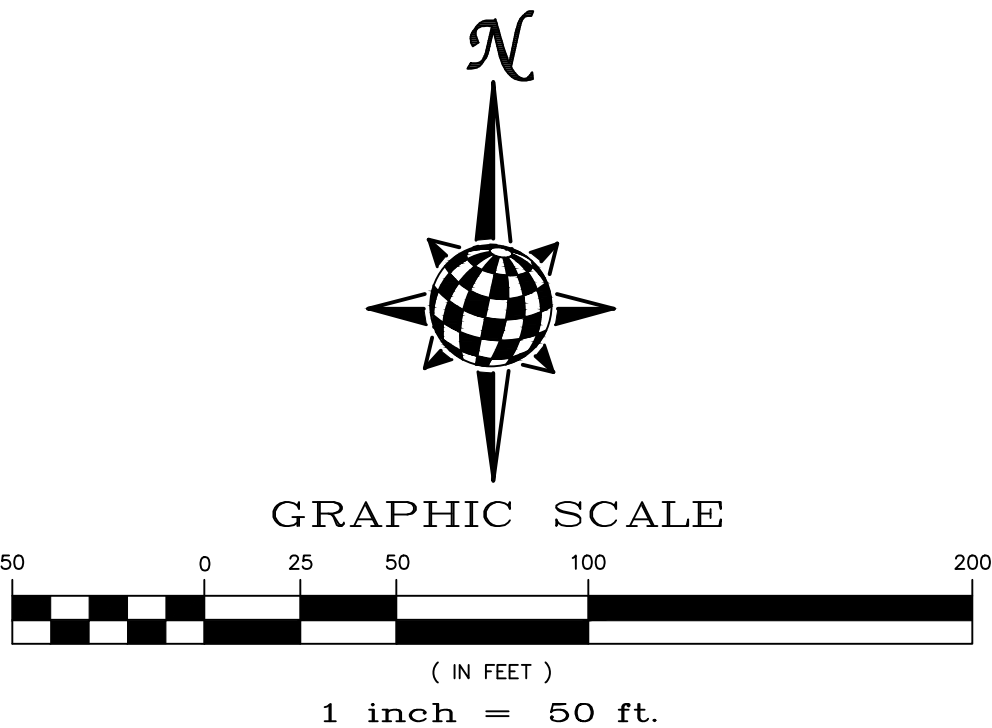
EXISTING CONTOUR (10')

EXISTING CONTOUR (2')

PROPOSED CONTOUR (10')

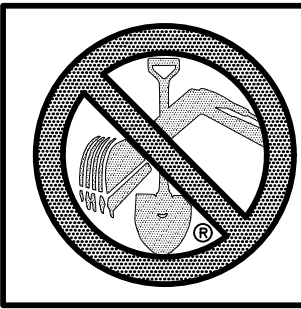
PROPOSED CONTOUR (2')

GRADE
LOT NUMBER



NOTE:
ALL CONTOURS SHOWN WITHIN THE PLAN SET ARE TO FINISHED SURFACE. ALL STREET SECTIONS ARE TO BE GRADED TO ROUGH SUB-GRADE AS SHOWN IN THEIR RESPECTIVE TYPICAL STREET SECTION SHOWN ON SHEET 43.

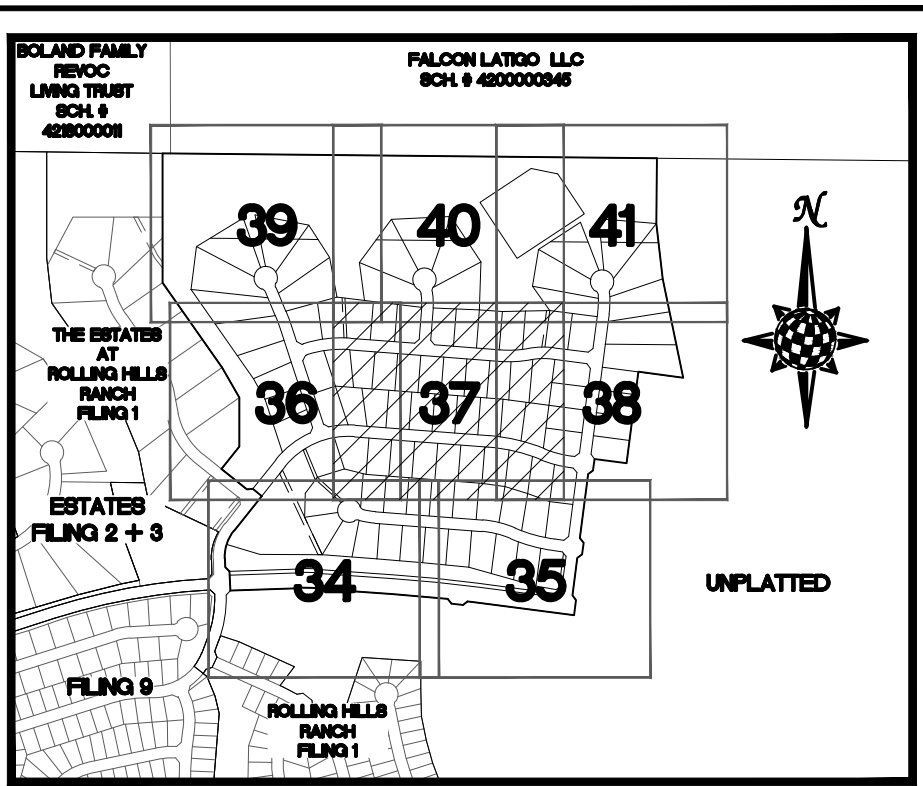
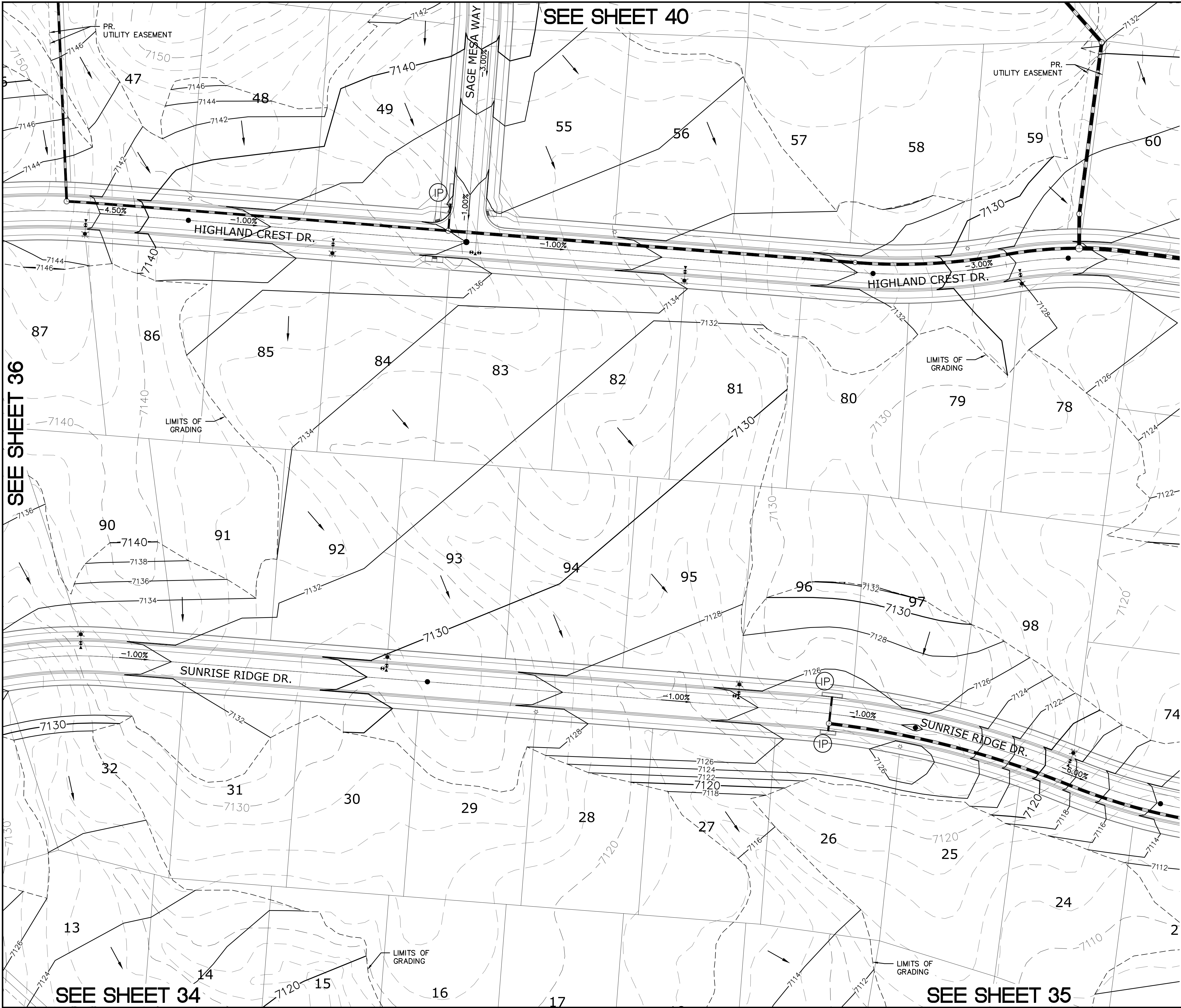
CONTRACTOR SHALL PROTECT ALL EXISTING UTILITIES.
EX. UTILITIES SEE CONSTRUCTION DRAWINGS FOR:
1)ESTATES FILING 2 AT MERIDIAN RANCH
2)ESTATES FILING 3 AT MERIDIAN RANCH
3)GUTHRIE RAW WATER EXTENSION THE VISTAS FILING 1 OFFSITE
4)MERIDIAN RANCH FILING 9
5)LONDONDERRY DRIVE/LAMBERT ROAD CONSTRUCTION DRAWINGS
6)MSMD PUMP STATION AND WATER TANK WATER TRANSMISSION LINES AND ROAD
7)THE ESTATES AT ROLLING HILLS RANCH FILING 1
8)ROLLING HILLS RANCH FILING 1



TWO WORKING DAYS
**BEFORE YOU DIG
CALL 811**

OR
UTILITY NOTIFICATION CENTER OF COLORADO
1-800-922-1987
(SEE COVER FOR LIST OF UTILITY CONTACTS)

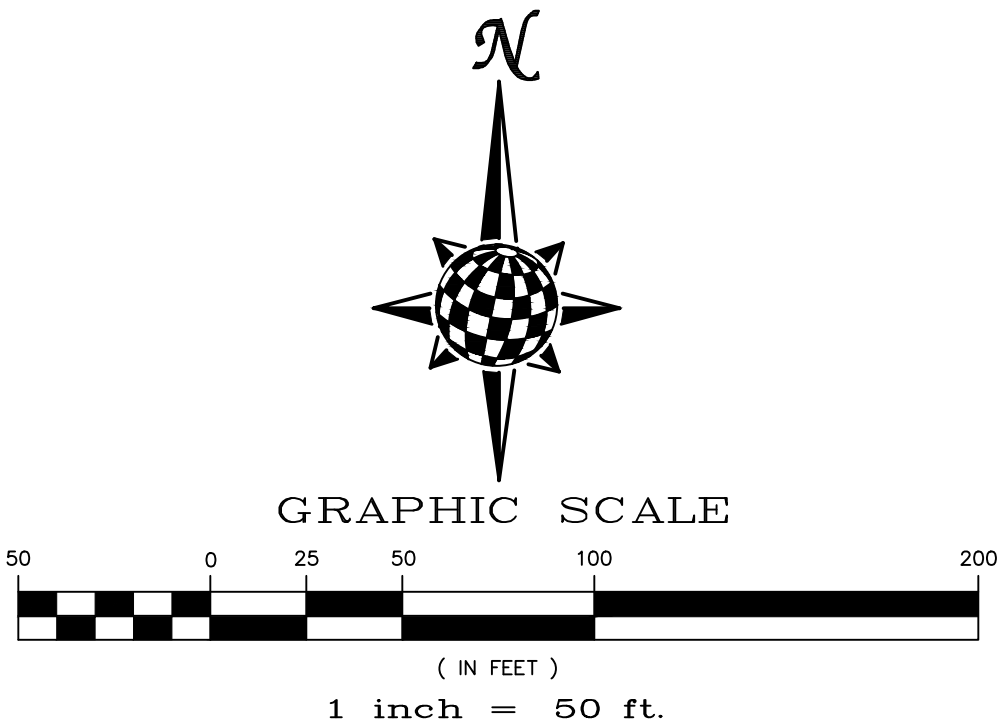
Revisions				Date	Appr.
No.	Date	Init.	Appr.	Date	Appr.
1					
2					
3					
4					
TECH CONTRACTORS 11886 STAPLETON DRIVE FALCON, CO 80831 TELEPHONE 719.495.7444 FAX 719.495.2457					
MERIDIAN RANCH					
THE ESTATES AT ROLLING HILLS RANCH FILING 2 GRADING/EROSION CONTROL PLAN					
GRADING LAYOUT					
Drawn by	Log	Checked by	TAK	Date	MARCH 2020
Scale	AS SHOWN	36	of	44	



INDEX MAP
N.T.S.

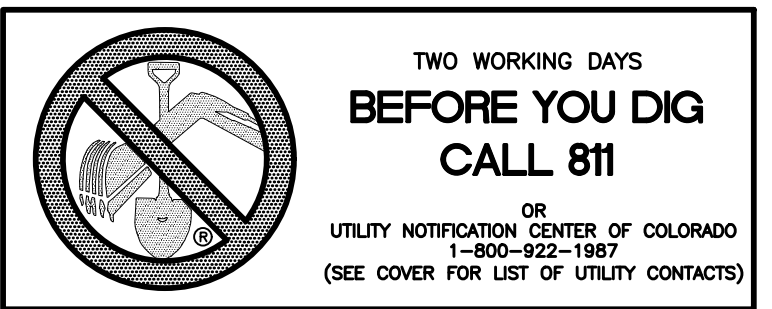
LEGEND


SYMBOL	ACRONYM	DESCRIPTION
		STRAW BALES
		EROSION WATTLES PER DETAIL SHEET 44
		EROSION CONTROL BLANKET PER DETAIL ECB-1 & ECB-2 DCM VOL. 2
	RCP	REINFORCED CONCRETE PIPE
	(SF)	SILT FENCE PER DETAIL SF-1, SF-2 & SF-3 DCM VOL. 2
	(VTC)	VEHICLE TRACKING CONTROL PER DETAIL VT-2 DCM VOL. 2
	(IP)	INLET PROTECTION PER DETAIL SHEET 44
		EXISTING CONTOUR (10')
		EXISTING CONTOUR (2')
		PROPOSED CONTOUR (10')
		PROPOSED CONTOUR (2')
		GRADE
		LOT NUMBER

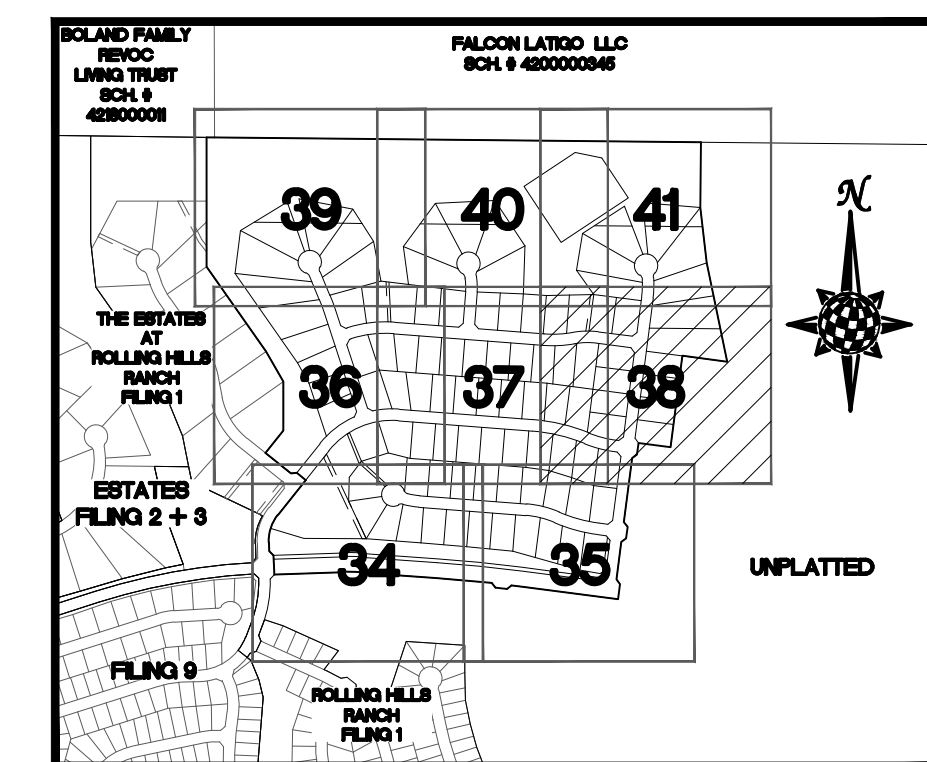


NOTE:
ALL CONTOURS SHOWN WITHIN THE PLAN SET ARE TO FINISHED SURFACE. ALL STREET SECTIONS ARE TO BE GRADED TO ROUGH SUB-GRADE AS SHOWN IN THEIR RESPECTIVE TYPICAL STREET SECTION SHOWN ON SHEET 43.

CONTRACTOR SHALL PROTECT ALL EXISTING UTILITIES.
EX. UTILITIES SEE CONSTRUCTION DRAWINGS FOR:
1)ESTATES FILING 2 AT MERIDIAN RANCH
2)ESTATES FILING 3 AT MERIDIAN RANCH
3)GUTHRIE RAW WATER EXTENSION THE VISTAS FILING 1 OFFSITE
4)MERIDIAN RANCH FILING 9
5)LONDONDERRY DRIVE/LAMBERT ROAD CONSTRUCTION DRAWINGS
6)MSMD PUMP STATION AND WATER TANK WATER TRANSMISSION LINES AND ROAD
7)THE ESTATES AT ROLLING HILLS RANCH FILING 1
8)ROLLING HILLS RANCH FILING 1


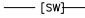











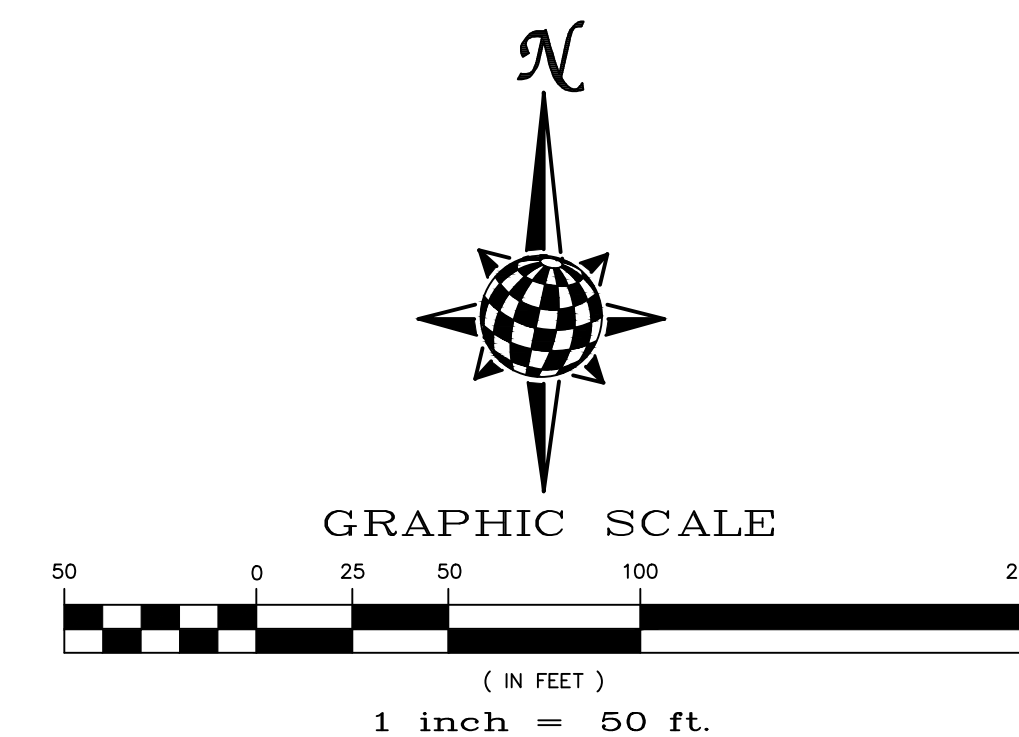
Scale AS SHOWN	Drawn by LOG	THE ESTATES AT ROLLING HILLS RANCH FILING 2			TECH CONTRACTORS 11886 STAPLETON DRIVE FALCON, CO 80831 TELEPHONE: 719.495.7444 FAX: 719.495.2457	1				
		GRADING-EROSION CONTROL PLAN				2				
		GRADING LAYOUT				3				
						4				
37 of 44	Date MARCH 2020				No.	Revisions	Date	Init.	Appr.	Date



INDEX MAP
N.T.S.

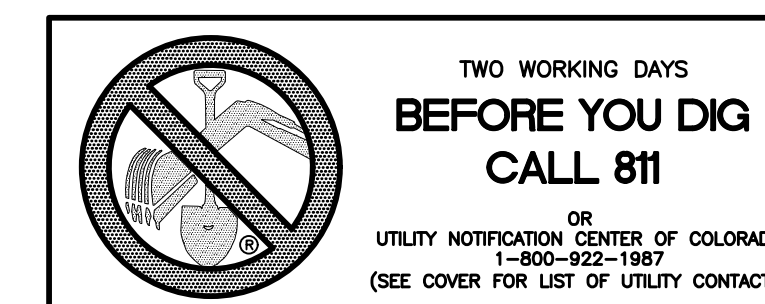
LEGEND


<u>SYMBOL</u>	<u>ACRONYM</u>	<u>DESCRIPTION</u>
		STRAW BALES
		EROSION WATTLES PER DETAIL SHEET 44
		EROSION CONTROL BLANKET PER DETAIL ECB-1 & ECB-2 DCM VOL. 2
	RCP	REINFORCED CONCRETE PIPE
	(SF)	SILT FENCE PER DETAIL SF-1, SF-2 & SF-3 DCM VOL. 2
	(VTC)	VEHICLE TRACKING CONTROL PER DETAIL VT-2 DCM VOL. 2
		INLET PROTECTION PER DETAIL SHEET 44
		EXISTING CONTOUR (10')
		EXISTING CONTOUR (2')
		PROPOSED CONTOUR (10')
		PROPOSED CONTOUR (2')
2.00%		GRADE
75		LOT NUMBER

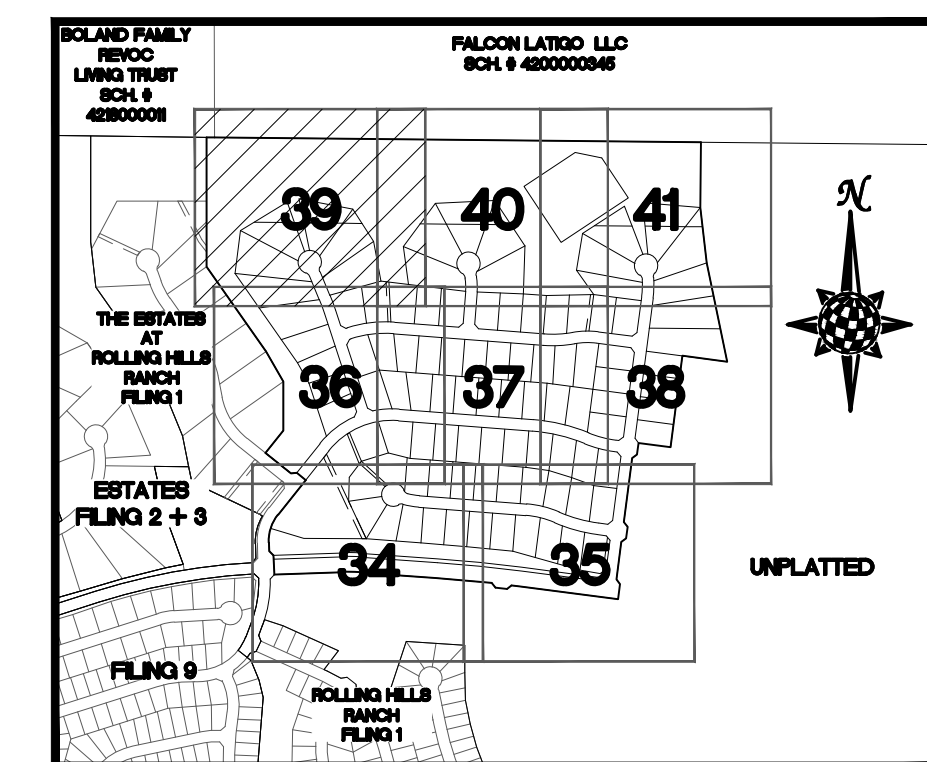
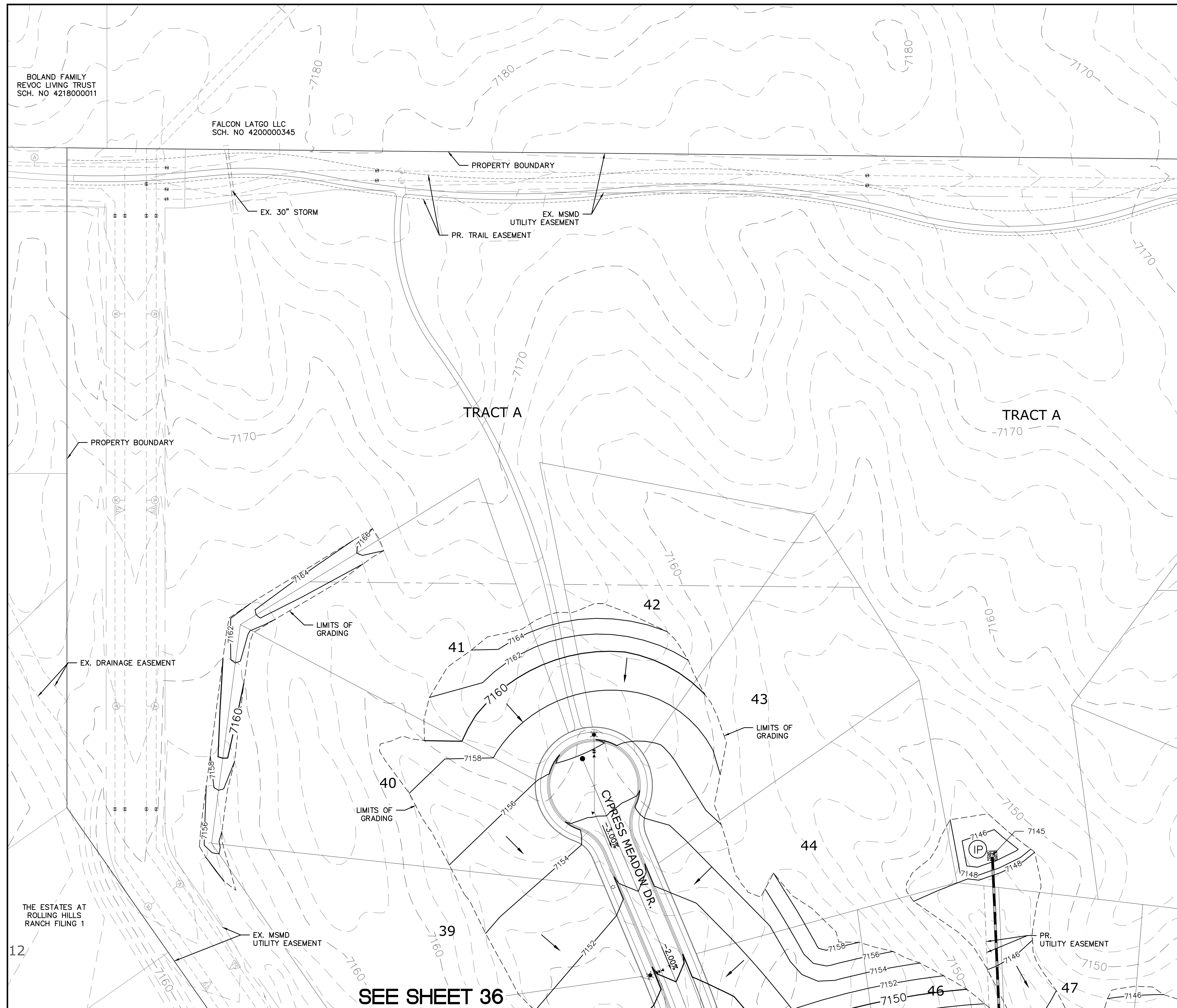


NOTE:
ALL CONTOURS SHOWN WITHIN THE PLAN SET ARE
TO FINISHED SURFACE. ALL STREET SECTIONS ARE
TO BE GRADED TO ROUGH SUB-GRADE AS SHOWN
IN THEIR RESPECTIVE TYPICAL STREET SECTION
SHOWN ON SHEET 43.

CONTRACTOR SHALL PROTECT ALL EXISTING UTILITIES
EX. UTILITIES SEE CONSTRUCTION DRAWINGS FOR:
1)ESTATES FILING 2 AT MERIDIAN RANCH
2)ESTATES FILING 3 AT MERIDIAN RANCH
3)GUTHRIE RAW WATER EXTENSION THE VISTAS FILING 1 OFFSITE
4)MERIDIAN RANCH FILING 9
5)LONDON/DERRY DRIVE/LAMBERT ROAD CONSTRUCTION DRAWINGS
6)MSMD PUMP STATION AND WATER TANK WATER TRANSMISSION LINES AND ROAD
7)THE ESTATES AT ROLLING HILLS RANCH FILING 1
8)ROLLING HILLS RANCH FILING 1




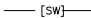









<div>Scale</div> <div>AS SHOWN</div>	Drawn by	LOG	THE ESTATES AT ROLLING HILLS RANCH FILING 2 GRADING-EROSION CONTROL PLAN	<div></div> <div>MERIDIAN RANCH</div>	TECH CONTRACTORS 11886 STAPLETON DRIVE FALCON, CO 80831 TELEPHONE: 719.495.7444 FAX: 719.495.2457	1	-				
	Checked by					2	-				
	Date	3				-					
		44				4	-				
38 of	MARCH 2020					No.	Revisions	Date	Init.	Appr.	Date

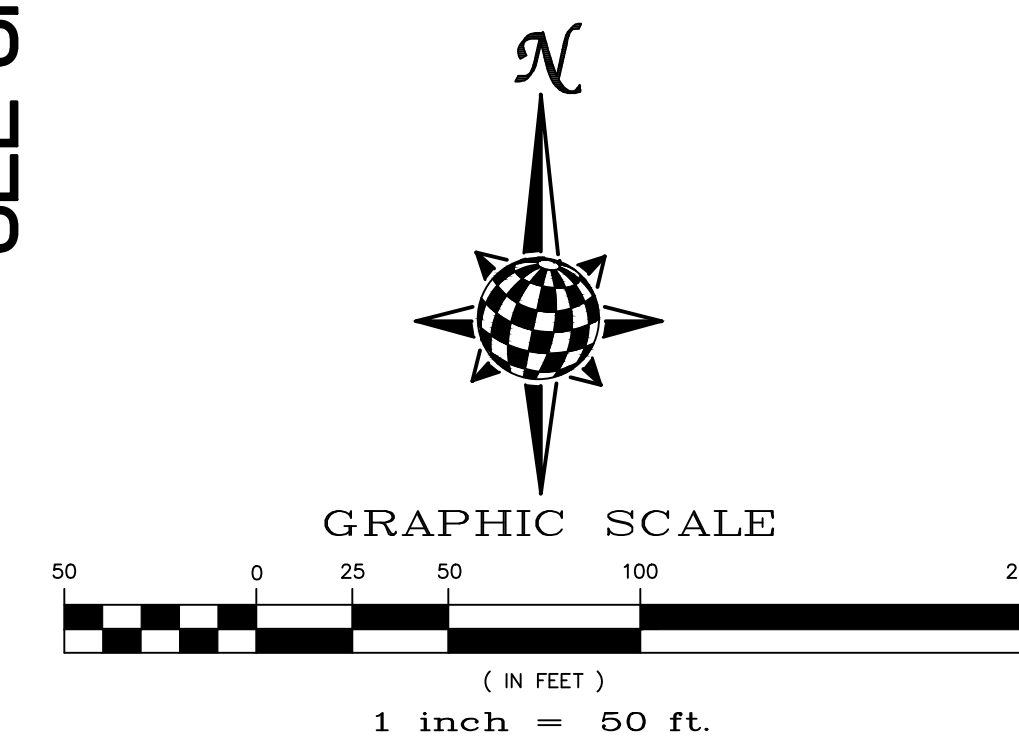


INDEX MAP

N.T.S.

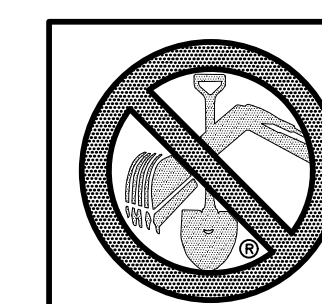
LEGEND

<u>SYMBOL</u>	<u>ACRONYM</u>	<u>DESCRIPTION</u>
		STRAW BALES
		EROSION WATTLES PER DETAIL SHEET 44
		EROSION CONTROL BLANKET PER DETAIL ECB-1 & ECB-2 DCM VOL. 2
	RCP	REINFORCED CONCRETE PIPE
	(SF)	SILT FENCE PER DETAIL SF-1, SF-2 & SF-3 DCM VOL. 2
	(VTC)	VEHICLE TRACKING CONTROL PER DETAIL VT-2 DCM VOL. 2
	(IP)	INLET PROTECTION PER DETAIL SHEET 44
		EXISTING CONTOUR (10')
		EXISTING CONTOUR (2')
		PROPOSED CONTOUR (10')
		PROPOSED CONTOUR (2')
2.00%		GRADE
75		LOT NUMBER




NOTE:
ALL CONTOURS SHOWN WITHIN THE PLAN SET ARE TO FINISHED SURFACE. ALL STREET SECTIONS ARE TO BE GRADED TO ROUGH SUB-GRADE AS SHOWN IN THEIR RESPECTIVE TYPICAL STREET SECTION SHOWN ON SHEET 43.

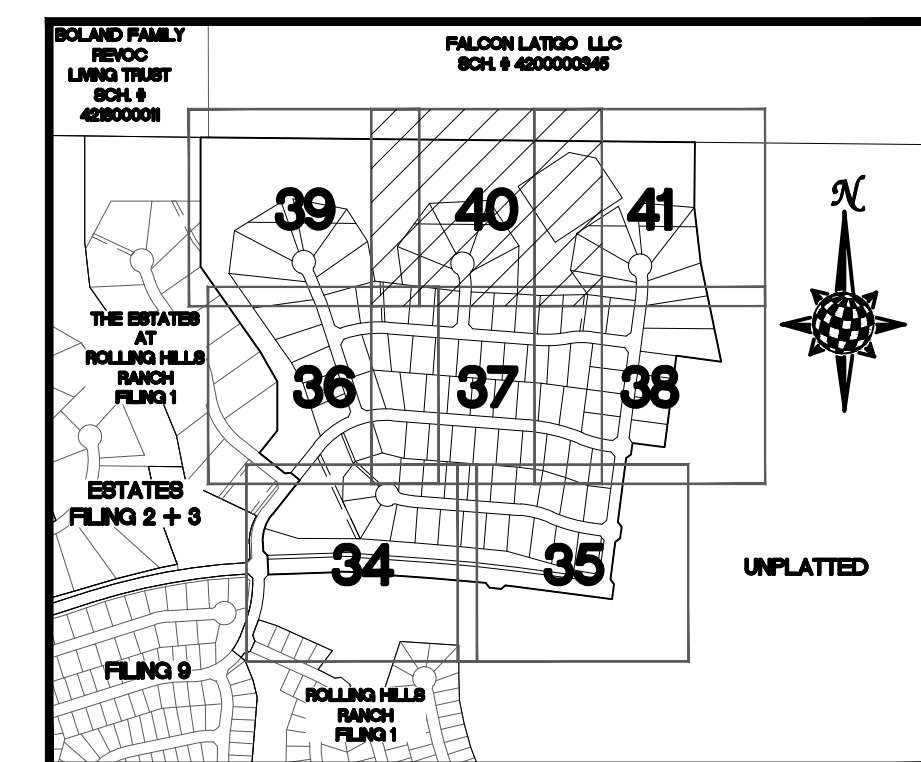
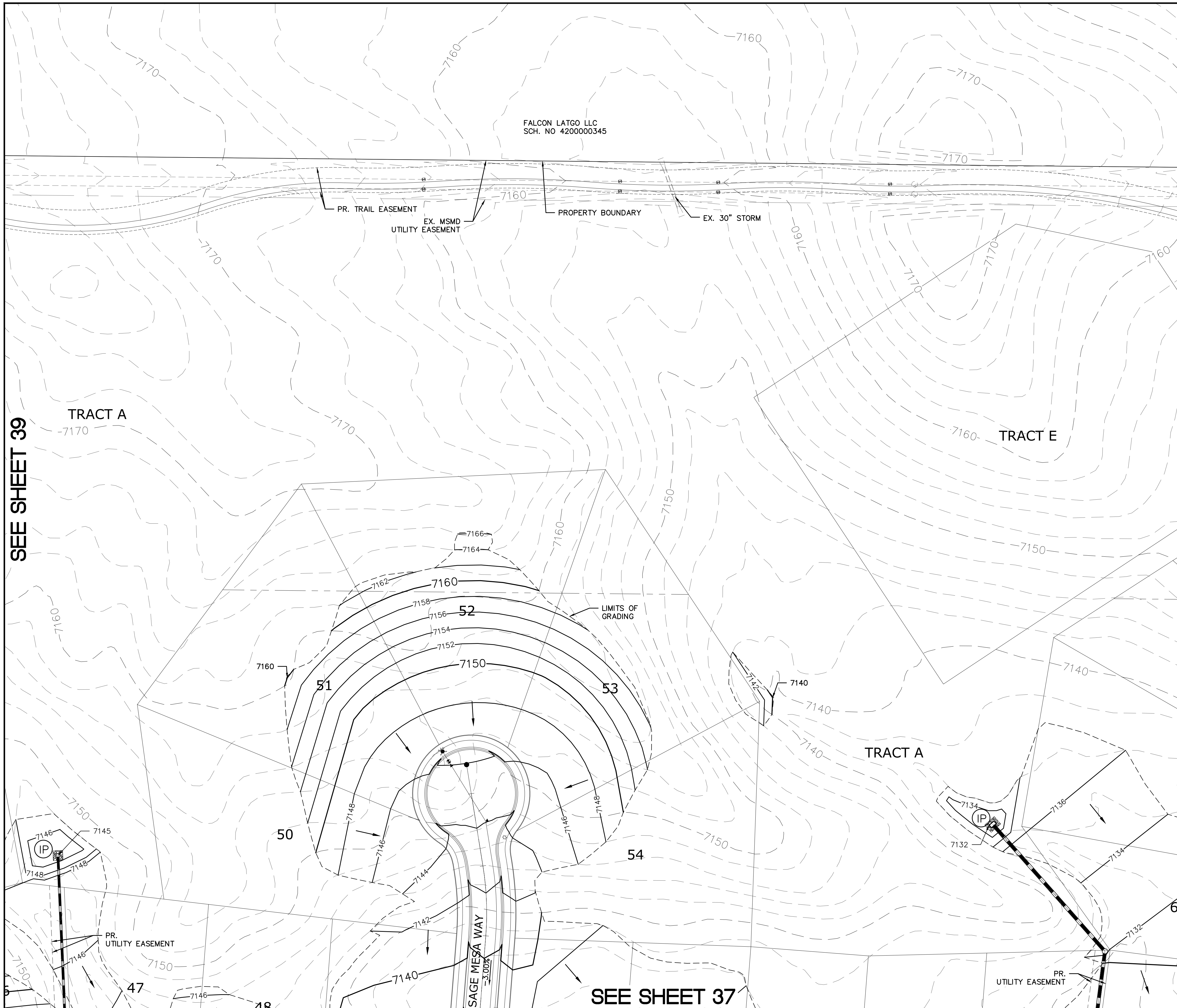
CONTRACTOR SHALL PROTECT ALL EXISTING UTILITIES.
EX. UTILITIES SEE CONSTRUCTION DRAWINGS FOR:
1)ESTATES FILING 2 AT MERIDIAN RANCH
2)ESTATES FILING 3 AT MERIDIAN RANCH
3)GUTHRIE RAW WATER EXTENSION THE VISTAS FILING 1 OFFSITE
4)MERIDIAN RANCH FILING 9
5)LONDONDERRY DRIVE/LAMBERT ROAD CONSTRUCTION DRAWINGS
6)MSMD PUMP STATION AND WATER TANK WATER TRANSMISSION LINES AND ROAD
7)THE ESTATES AT ROLLING HILLS RANCH FILING 1
8)ROLLING HILLS RANCH FILING 1



**TWO WORKING DAYS
BEFORE YOU DIG
CALL 811**

OR
UTILITY NOTIFICATION CENTER OF COLORADO
1-800-922-1987
(SEE COVER FOR LIST OF UTILITY CONTACTS)


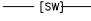









<div>Scale</div> <div>AS SHOWN</div> <div>39 of 44</div>	<div>Drawn by</div> <div>LOG</div>	<div>THE ESTATES AT</div> <div>ROLLING HILLS RANCH FILING 2</div> <div>GRADING/EROSION CONTROL PLAN</div>	<div></div> <div>MERIDIAN RANCH</div>	<div>TECH CONTRACTORS</div> <div>11886 STAPLETON DRIVE</div> <div>FALCON, CO 80831</div> <div>TELEPHONE: 719.495.7444</div> <div>FAX: 719.495.2457</div>	1								
	<div>Checked by</div> <div>TAK</div>				2								
	<div>Date</div> <div>MARCH 2020</div>	3											
		4											
								No.	Revisions	Date	Init.	Appr.	Date

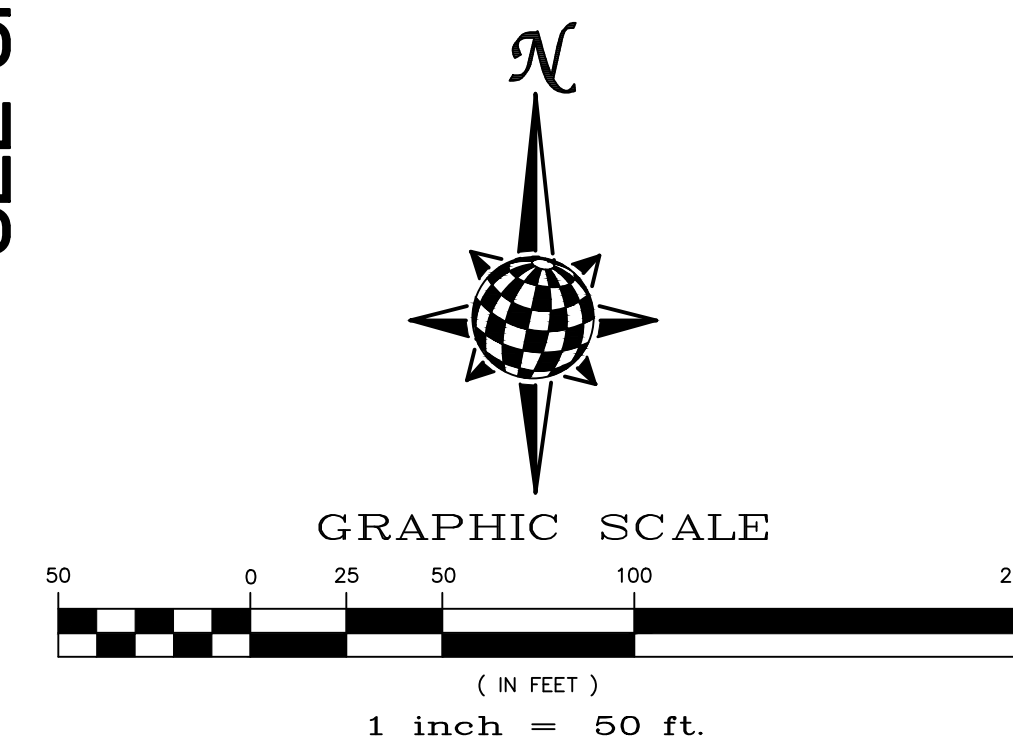


INDEX MAP

N.T.S.

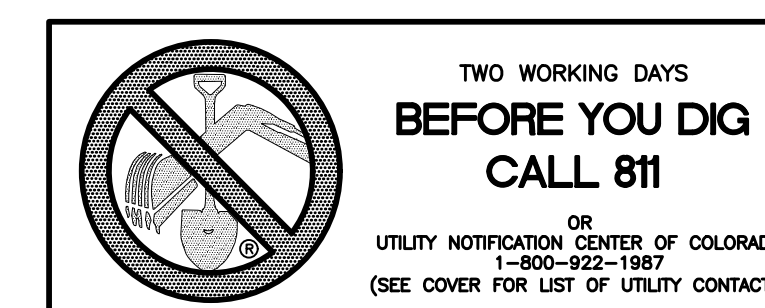
LEGEND


<u>SYMBOL</u>	<u>ACRONYM</u>	<u>DESCRIPTION</u>
		STRAW BALES
		EROSION WATTLES PER DETAIL SHEET 44
		EROSION CONTROL BLANKET PER DETAIL ECB-1 & ECB-2 DCM VOL. 2
	RCP	REINFORCED CONCRETE PIPE
	(SF)	SILT FENCE PER DETAIL SF-1, SF-2 & SF-3 DCM VOL. 2
	(VTC)	VEHICLE TRACKING CONTROL PER DETAIL VT-2 DCM VOL. 2
	(IP)	INLET PROTECTION PER DETAIL SHEET 44
		EXISTING CONTOUR (10')
		EXISTING CONTOUR (2')
		PROPOSED CONTOUR (10')
		PROPOSED CONTOUR (2')
2.00%		GRADE
75		LOT NUMBER



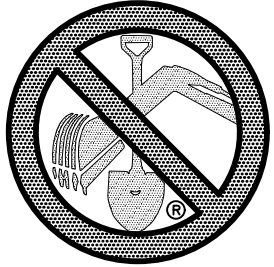
NOTE:
ALL CONTOURS SHOWN WITHIN THE PLAN SET ARE
TO FINISHED SURFACE. ALL STREET SECTIONS ARE
TO BE GRADED TO ROUGH SUB-GRADE AS SHOWN
IN THEIR RESPECTIVE TYPICAL STREET SECTION
SHOWN ON SHEET 43.

CONTRACTOR SHALL PROTECT ALL EXISTING UTILITIES
EX. UTILITIES SEE CONSTRUCTION DRAWINGS FOR:
1)ESTATES FILING 2 AT MERIDIAN RANCH
2)ESTATES FILING 3 AT MERIDIAN RANCH
3)GUTHRIE RAW WATER EXTENSION THE VISTAS FILING 1 OFFSITE
4)MERIDIAN RANCH FILING 9
5)LONDONDERRY DRIVE/LAMBERT ROAD CONSTRUCTION DRAWINGS
6)MSMD PUMP STATION AND WATER TANK WATER TRANSMISSION LINES AND ROAD
7)THE ESTATES AT ROLLING HILLS RANCH FILING 1
8)ROLLING HILLS RANCH FILING 1



<div> <div>Scale</div> <div>AS SHOWN</div> <div>40 of 44</div> </div>	<div> <div>Drawn by</div> <div>LOG</div> </div>	<div> <div>THE ESTATES AT</div> <div>ROLLING HILLS RANCH FILING 2</div> <div>GRADING-EROSION CONTROL PLAN</div> <div>GRADING LAYOUT</div> </div>	<div>  <div> <div>MERIDIAN RANCH</div> <div>TECH CONTRACTORS</div> <div>11886 STAPLETON DRIVE</div> <div>FALCON, CO 80831</div> <div>TELEPHONE: 719.495.7444</div> <div>FAX: 719.495.2457</div> </div> </div>	1	-			
	<div> <div>Checked by</div> <div>TAK</div> </div>			2	-			
	<div> <div>Date</div> <div>MARCH 2020</div> </div>			3	-			
				4	-			
				<div> <div>No.</div> <div>Revisions</div> </div>				





TWO WORKING DAYS

BEFORE YOU DIG

CALL 811

OR

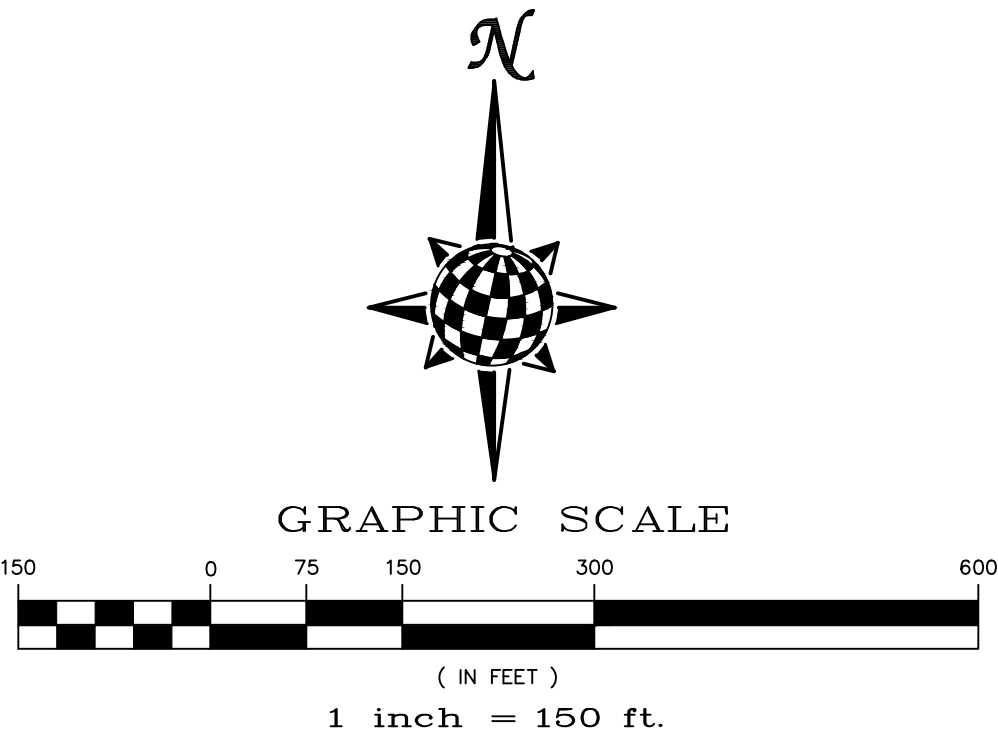
UTILITY NOTIFICATION CENTER OF COLORADO

1-800-922-1987

(SEE COVER FOR LIST OF UTILITY CONTACTS)

NOTE:
ALL CONTOURS SHOWN WITHIN THE PLAN SET ARE TO FINISHED SURFACE. ALL STREET SECTIONS ARE TO BE GRADED TO ROUGH SUB-GRADE AS SHOWN IN THEIR RESPECTIVE TYPICAL STREET SECTION SHOWN ON SHEET 43.


CONTRACTOR SHALL PROTECT ALL EXISTING UTILITIES.
EX. UTILITIES SEE CONSTRUCTION DRAWINGS FOR:
1)ESTATES FILING 2 AT MERIDIAN RANCH
2)ESTATES FILING 3 AT MERIDIAN RANCH
3)GUTHRIE RAW WATER EXTENSION THE VISTAS FILING 1 OFFSITE
4)MERIDIAN RANCH FILING 9
5)LONDONDERRY DRIVE/LAMBERT ROAD CONSTRUCTION DRAWINGS
6)MSMD PUMP STATION AND WATER TANK WATER TRANSMISSION LINES AND ROAD
7)THE ESTATES AT ROLLING HILLS RANCH FILING 1
8)ROLLING HILLS RANCH FILING 1



LEGEND:

AREAS OF CUT

AREAS OF FILL

Scale AS SHOWN	41 of 44	Drawn by LCS	THE ESTATES AT ROLLING HILLS RANCH FILING 2				 MERIDIAN RANCH	TECH CONTRACTORS 11886 STAPLETON DRIVE FALCON, CO 80831 TELEPHONE: 719.495.7444 FAX: 719.495.2457				1	-			
		Checked by TAK	GRADING/EROSION CONTROL PLAN					2	-							
			GRADING LAYOUT					3	-							
								4	-							
			Date MARCH 2020					No.	Revisions	Date	Init.	Appr.	Date			

