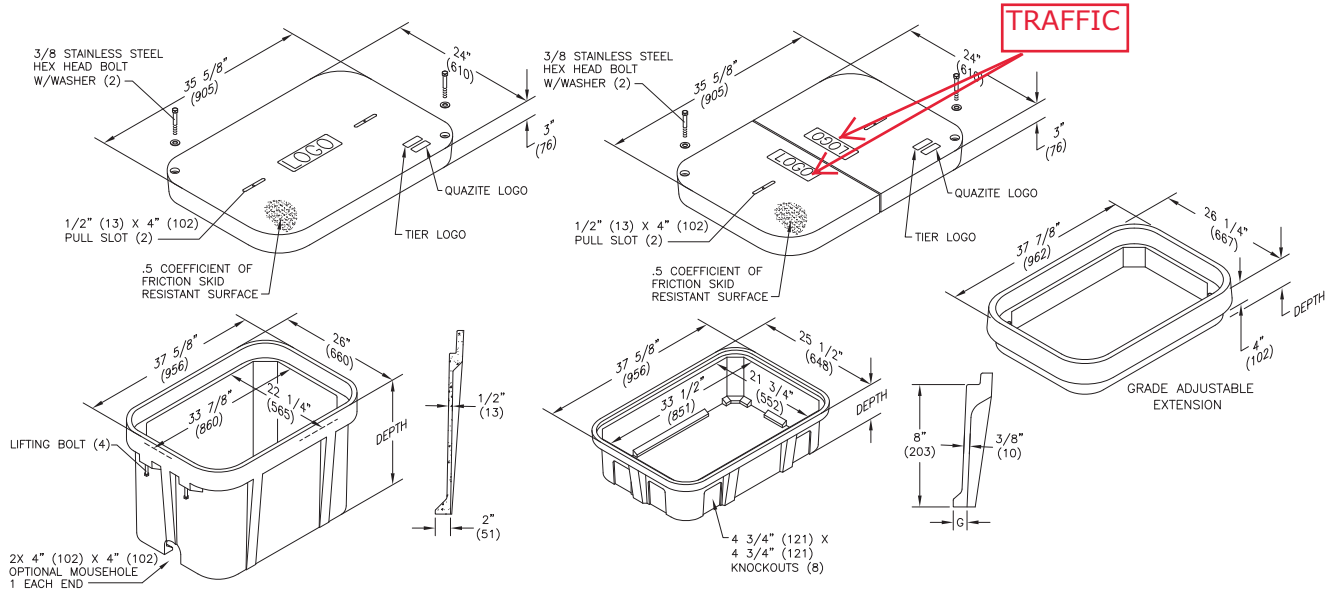




# Dimensions / Data

## 24" x 36" PG Style Polymer Concrete (Stackable) Assembly

**Hex Head Bolts are Standard**



### Covers

	DESCRIPTION	TIER	DESIGN / TEST LOAD #	WEIGHT #	PALLET QTY	PART NO.
UL	W/ 2 Bolts	8	8,000 / 12,000	100	10	PG2436CA00**
	2 piece w/2 Bolts	8	8,000 / 12,000	122	10	PG2436CS00**
UL	W/ 2 Bolts	15	15,000 / 22,500	115	10	PG2436HA00**
UL	2 piece w/2 Bolts	15	15,000 / 22,500	122	10	PG2436HS00**
UL	W/ 2 Bolts	22	22,500 / 33,750	122	10	PG2436HH00**
	2 piece w/2 Bolts	22	22,500 / 33,750	202	10	PG2436H544**
UL	No Bolts	8	8,000 / 12,000	100	10	PG2436WA00**

To order gasketed covers, replace the letter "A" with the letter "G".

Replace \*\* with a logo code found on page 62. See page 68 for meter and touch/radio read cover options.

NOTE: Gasketed covers and bolt grommets must be used with a gasketed box. Gaskets reduce the inflow of fluids but do not make the enclosure water tight.

Available with EZ Locate. See page 67 for more information.

QUAZITE

# Dimensions / Data 24"x 36" PG Style Polymer Concrete (Stackable) Assembly (Continued)

Hex Head Bolts are Standard

## Boxes (Box depths 24" thru 42" must be used as bottom of any stack)

	DESCRIPTION	DEPTH	TIER	DESIGN / TEST LOAD #	WEIGHT #	PALLET QTY	PART NO.
UL	Standard Open Bottom	18"	22	22,500 / 33,750	141	4	PG2436BA18
UL		24"		22,500 / 33,750	180	3	PG2436BA24
UL		30"		22,500 / 33,750	196	2	PG2436BA30
UL		36"		22,500 / 33,750	254	2	PG2436BA36
UL		42"		22,500 / 33,750	293	1	PG2436BA42
UL	Solid Bottom	18 1/2"	22	22,500 / 33,750	171	4	PG2436DA18
UL		24 1/2"		22,500 / 33,750	228	3	PG2436DA24
UL		30 1/2"		22,500 / 33,750	238	2	PG2436DA30
UL		36 1/2"		22,500 / 33,750	282	2	PG2436DA36
UL		42 1/2"		22,500 / 33,750	321	1	PG2436DA42

To order boxes with 2 standard mouseholes, replace the letter "A" with the letter "B".

To order gasketed boxes, replace the letter "A" with the letter "G".

NOTE: 24" thru 42" boxes must be used as bottom on any stack.

NOTE: Gasketed covers and bolt grommets must be used with a gasketed box. Gaskets reduce the inflow of fluids but do not make the enclosure water tight.

## Bottom Extensions (for use under 12" and 18" boxes only, one per box)

DESCRIPTION	DEPTH	TIER	DESIGN / TEST LOAD #	WEIGHT #	PALLET QTY	PART NO.
Open bottom	8 3/4"	22	22,500 / 33,750	81	6	PG2436EA08
Solid bottom	9 1/4"	22	22,500 / 33,750	95	6	PG2436RA08

## Grade Adjustable Extension

DESCRIPTION	DEPTH	TIER	DESIGN / TEST LOAD #	WEIGHT #	PALLET QTY	PART NO.
4" top extension, 1/2 thread	7 1/8"	22	22,500 / 33,750	80	6	PG2436ED04
4" top extension, 3/8 thread	7 1/8"	22	22,500 / 33,750	80	6	PG2436E503