

EXHIBIT FF – EL PASO COUNTY BURN PROBABILITY MAP



Colorado Wildfire Risk Public Viewer

<https://co-pub.coloradoforestatlas.org>

Created on:

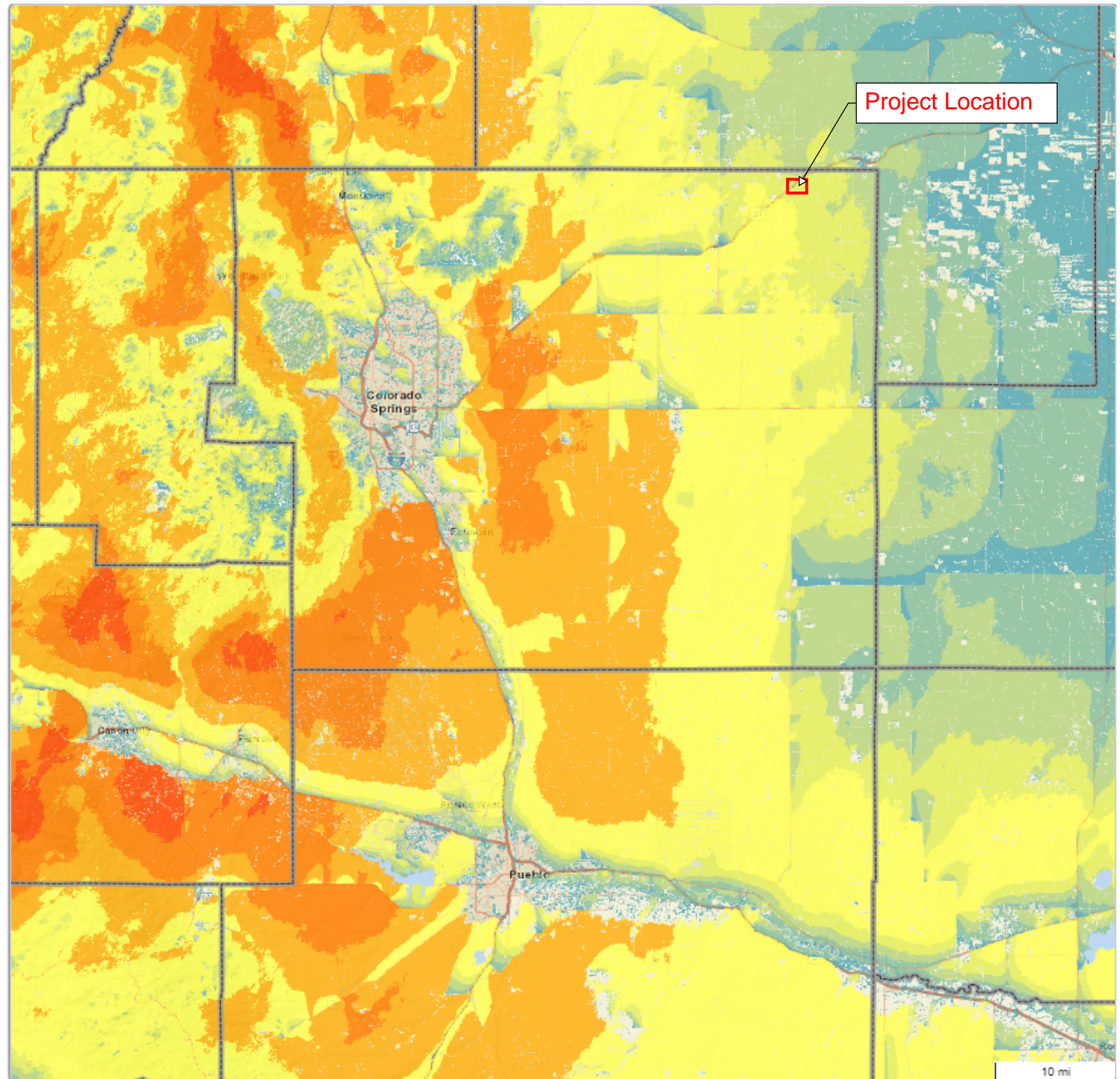
9/21/2022, 3:41 PM

Disclaimer

The user assumes the entire risk related to their use of the Colorado Wildfire Risk Public Viewer and either the published or derived products from these data.

The Colorado State Forest Service is providing these data "as is" and disclaims any and all warranties, whether expressed or implied, including (without limitation) any implied warranties of merchantability or fitness for a particular purpose.

In no event will Colorado State Forest Service be liable to you or to any third party for any direct, indirect, incidental, consequential, special or exemplary damages or lost profit resulting from any use or misuse of these data.






Legend

<https://co-pub.coloradoforestatlas.org>

Burn Probability

- Non-Burnable
-  Very Low
-  Very Low-Low
-  Low
-  Low-Moderate
-  Moderate
-  Moderate-High
-  High
-  High-Very High
-  Very High

County Boundaries

 < 1:1,500,000