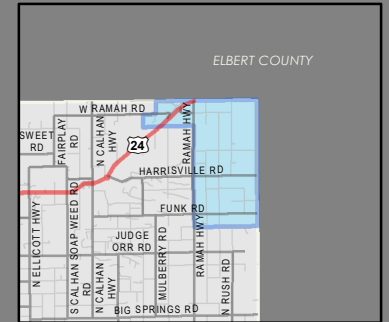
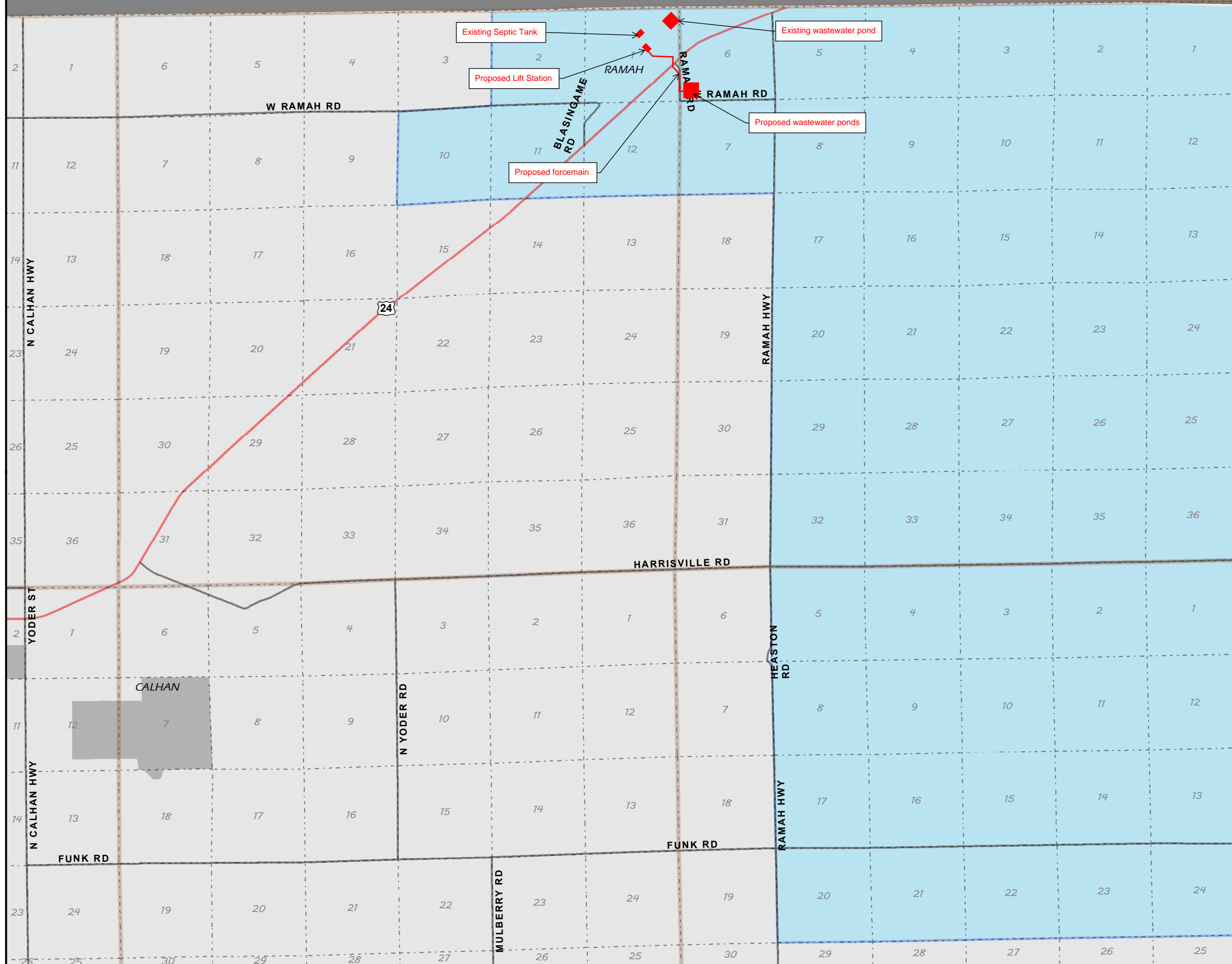


**EXHIBIT L – FIRE PROTECTION DISTRICT MAP
SCHOOL DISTRICT MAP**



ELBERT COUNTY

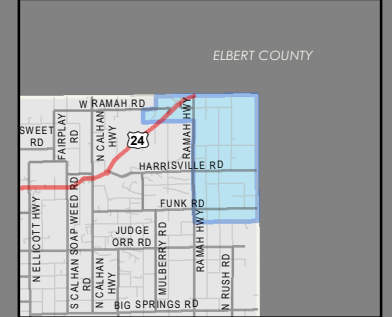
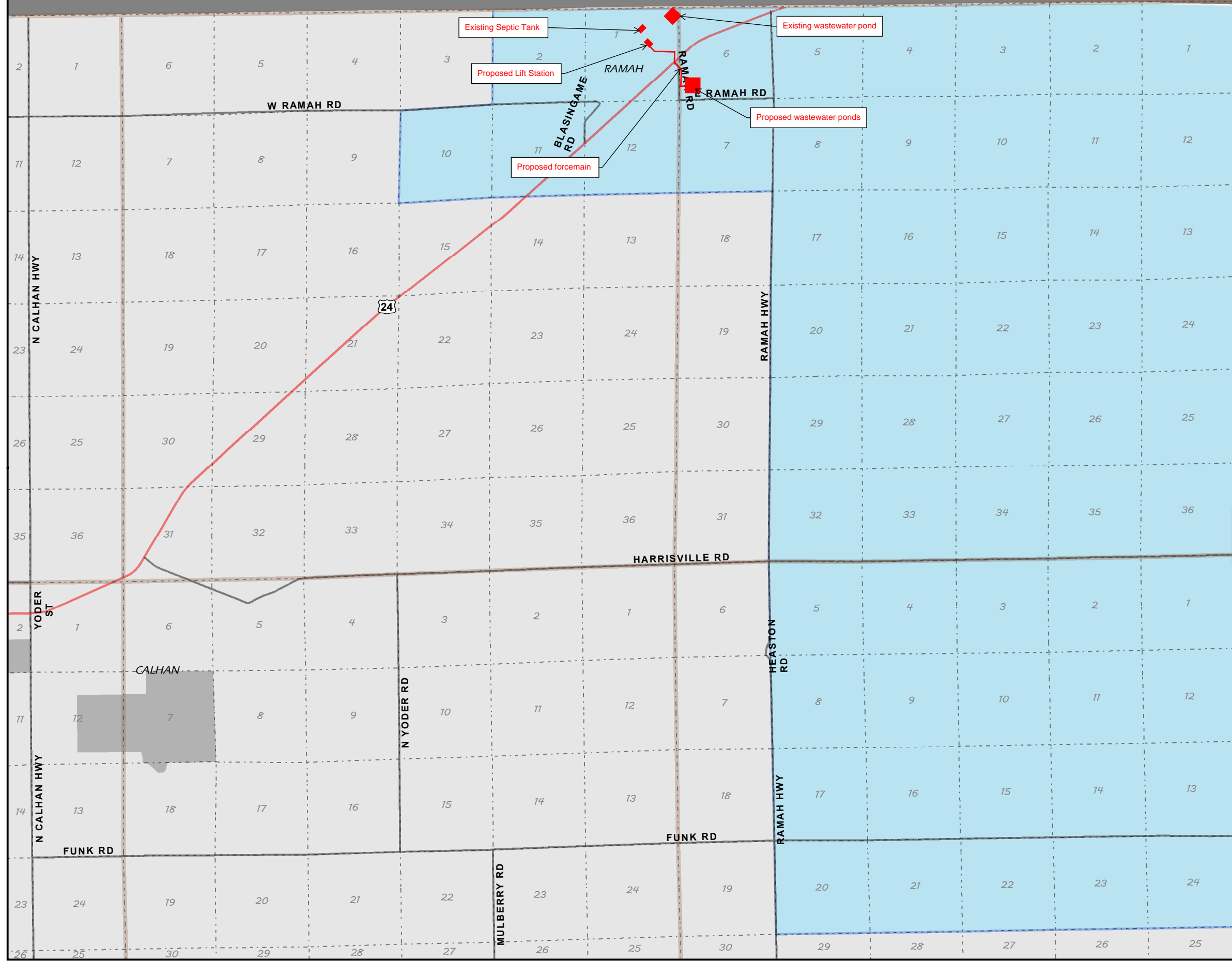
BIG SANDY SCHOOL DISTRICT 100J

Tax Boundary

1 inch = 5,621.32 feet

08/12/2021 EPC Assessor's Office
NAD_1983_StatePlane_Colorado_Central_FIPS_0502_Feet
Projection: Lambert_Conformal_Conic

COPYRIGHT 2018 by the Board of County Commissioners, El Paso County, Colorado. All rights reserved. No part of this document or data contained hereon may be reproduced, used to prepare derivative products, or distributed without the specific written approval of the Board of County Commissioners, El Paso County, Colorado. This document was prepared from the best data available at the time of plotting and is for internal use only. El Paso County, Colorado, makes no claim as to the completeness or accuracy of the data contained hereon.



ELBERT COUNTY