

SCHOOL DISTRICT 49

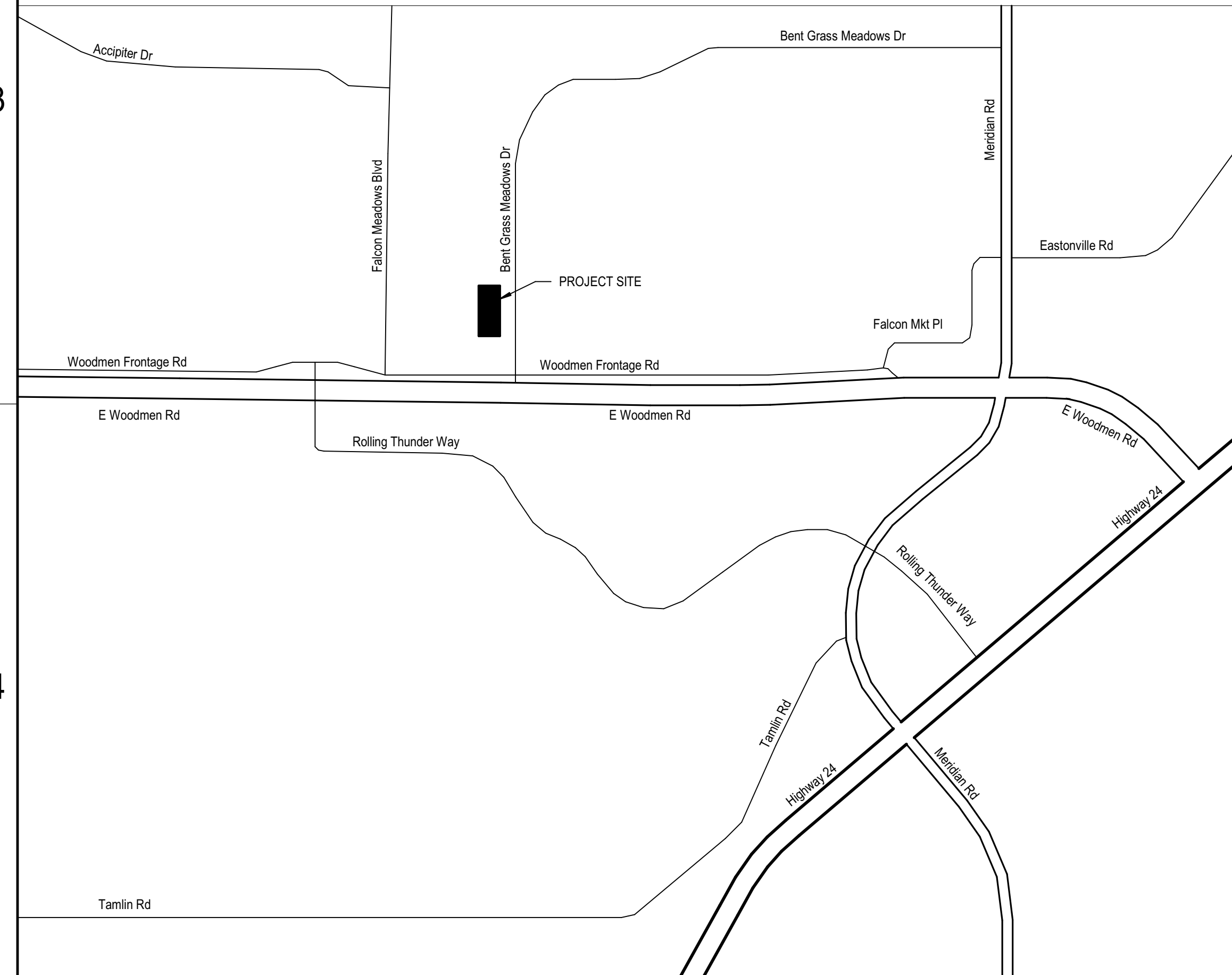
GROUNDS EXPANSION

10850 E WOODMEN RD
PEYTON, CO 80831

DEVELOPMENT PLAN

JANUARY 28, 2025

VICINITY MAP



INDEX OF DRAWINGS

- DEVELOPMENT PLAN.
- DP.0 COVER SHEET
 - DP.1 DEVELOPMENT PLAN
 - DP.2 DEVELOPMENT PLAN
 - DP.3 ARCHITECTURAL SITE PLAN
 - DP.4 BARN FLOOR PLAN
 - DP.5 BARN EXTERIOR ELEVATIONS
 - DP.6 COVERED PARKING FLOOR PLAN
 - DP.7 COVERED PARKING EXTERIOR ELEVATIONS
 - DP.8 PHOTOMETRIC PLAN

PROJECT TEAM

OWNER
SCHOOL DISTRICT 49
10850 E WOODMEN RD,
PEYTON, CO 80831
719.491.2182
CONTACT:
BRUCE BROWN
BRUCE.BROWN@D49.ORG

MECHANICAL / PLUMBING ENGINEER
M-E ENGINEERS, INC
1125 KELLY JOHNSON BLVD, SUITE 301
COLORADO SPRINGS, CO 80920
719.536.0036
CONTACT:
JEREMY O'BRIEN, PE, LEED AP
JEREMY.OBRIEN@ME-ENGINEERS.COM

ARCHITECT / INTERIOR DESIGN
DLR GROUP
523 S CASCADE, SUITE 100
COLORADO SPRINGS, CO 80903
719.634.0205
CONTACT:
JADEE HARSMA, AIA, LEED AP BD+C
JHARSMA@DLRGROUP.COM
DAVID RIGGS, AIA
DRIGGS@DLRGROUP.COM

ELECTRICAL ENGINEER
M-E ENGINEERS, INC
1125 KELLY JOHNSON BLVD, SUITE 301
COLORADO SPRINGS, CO 80920
719.536.0036
CONTACT:
JEREMY O'BRIEN, PE
JEREMY.OBRIEN@ME-ENGINEERS.COM

CIVIL ENGINEER
KOWIA ENGINEERING
1664 S 21ST ST,
COLORADO SPRINGS, CO 80904
719.530.7342
CONTACT:
ANDY MCCORD
AMCCORD@KOWIAENGINEERING.COM

PROJECT DATA

PROJECT ADDRESS: 10850 E WOODMEN RD,
PEYTON, CO 80831

PARCEL: 5301002006

PARCEL SIZE: 10.19 ACRES

LEGAL DESCRIPTION: LOT 2 LATIGO BUSINESS CENTER FIL NO 1

EXISTING LAND USE/
DEVELOPMENT: EXEMPT NONRESIDENTIAL LAND - POLITICAL SUBDIVISION

EXISTING ZONING
DISTRICT: EL PASO COUNTY

BARN GROSS
BUILDING SF: 10,063 SQUARE FEET

COVERED PARKING
GROSS BUILDING SF: 26,000 SQUARE FEET

D49 GROUNDS EXPANSION
CENTRAL OFFICE
10850 E WOODMEN RD
PEYTON, CO 80831

DEVELOPMENT
PLAN
01.28.2025
REVISIONS

37-24108-00
COVER SHEET

DP.0

A

B

C

D

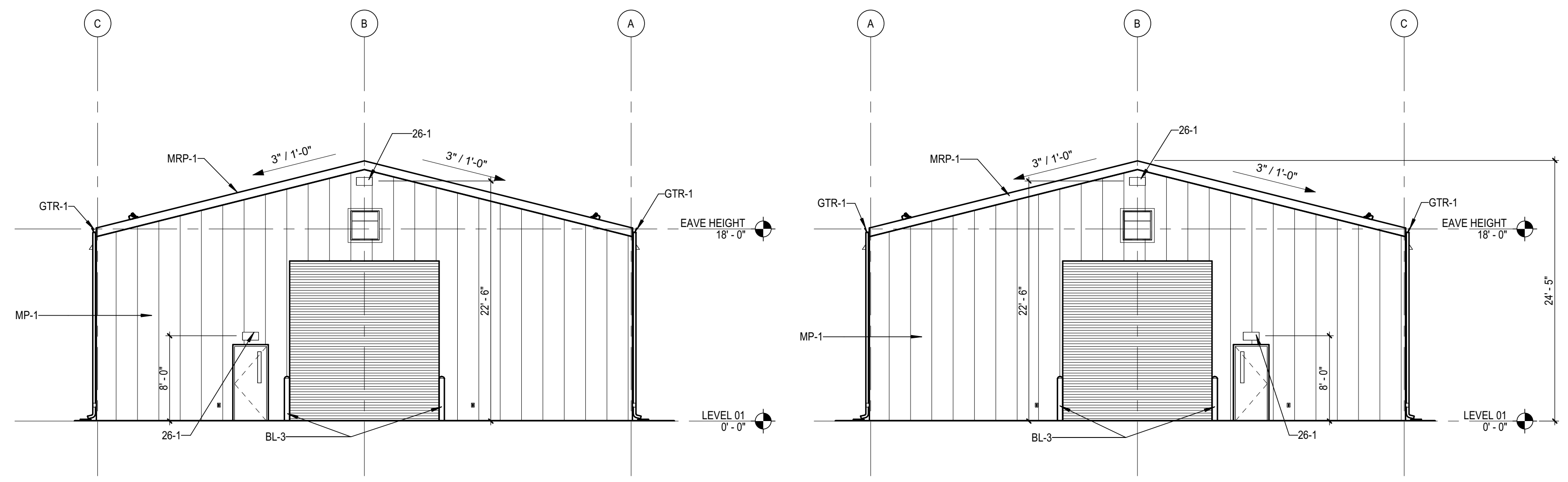
E

REFERENCE KEYNOTES

- 07-1 SNOW GUARDS
- 26-1 BUILDING MOUNTED LIGHT FIXTURE
- BL-3 6" EXTERIOR PIPE BOLLARD
- GTR-1 PRE-FINISHED METAL GUTTER AND DOWNSPOUT BY METAL BLDG MFR
- MP-1 METAL BLDG MFR
- MRP-1 FORMED METAL WALL PANEL BY METAL BLDG MFR
- MRP-1 FORMED METAL ROOF PANEL BY METAL BLDG MFR



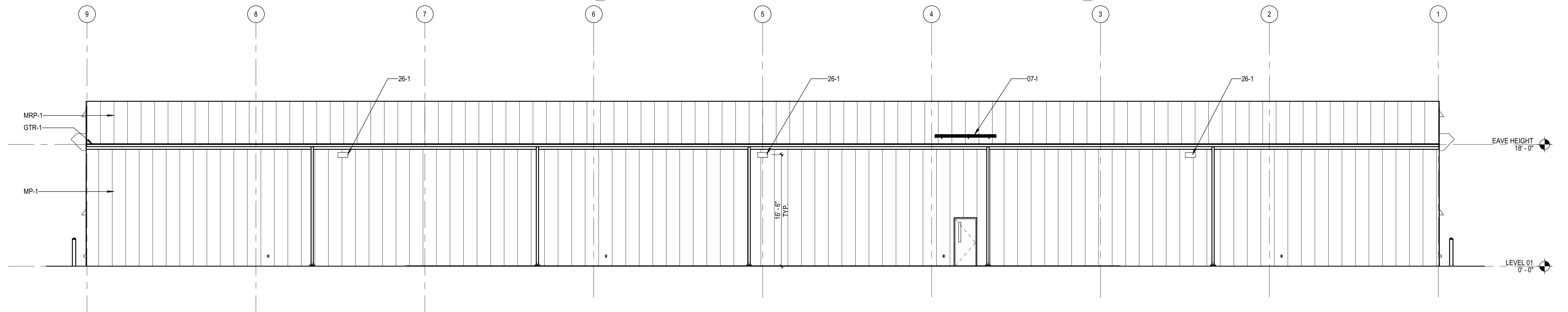
1



2C EXTERIOR ELEVATION - NORTH
SCALE: 1/8" = 1'-0"

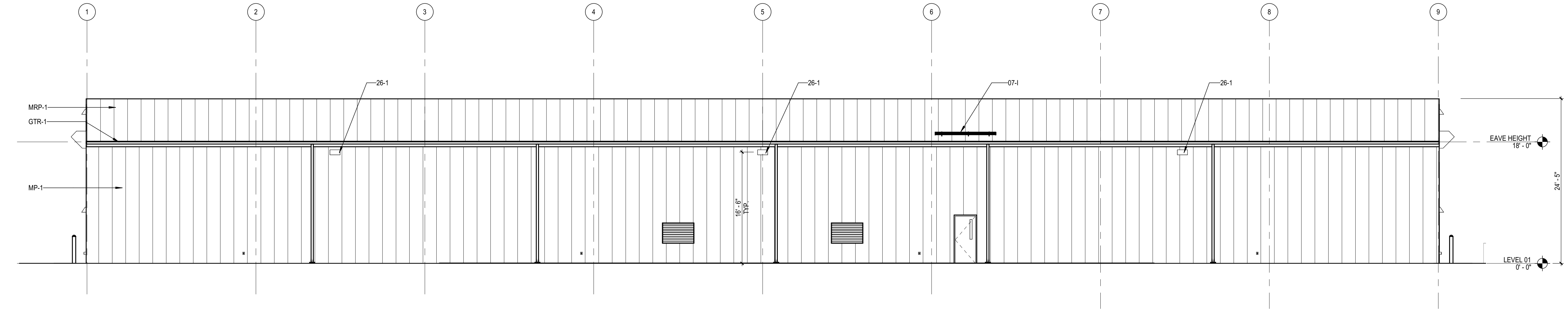
2D EXTERIOR ELEVATION - SOUTH
SCALE: 1/8" = 1'-0"

2



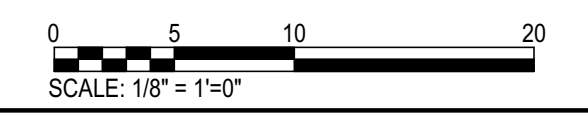
3A EXTERIOR ELEVATION - WEST
SCALE: 1/8" = 1'-0"

3



4A EXTERIOR ELEVATION - EAST
SCALE: 1/8" = 1'-0"

4



D49 GROUNDS EXPANSION
BARN

10650 E WOODMEN RD
PEYTON, CO 80831

DEVELOPMENT PLAN
01.28.2025
REVISIONS

37-24108-00
BARN EXTERIOR ELEVATIONS

DP.5

Autodesk Docs/37-24108-00 D49 Ground Yard Project/37-24108-00_D49_Barn_AR_2022.rvt
1/29/2025 2:44:07 PM

A

B

C

D

E

REFERENCE KEYNOTES

07-1	SNOW GUARDS
26-1	BUILDING MOUNTED LIGHT FIXTURE
GTR-1	PRE-FINISHED METAL GUTTER AND DOWNSPOUT BY METAL BLDG MFR
MP-1	FORMED METAL WALL PANEL BY METAL BLDG MFR
MRP-1	FORMED METAL ROOF PANEL BY METAL BLDG MFR

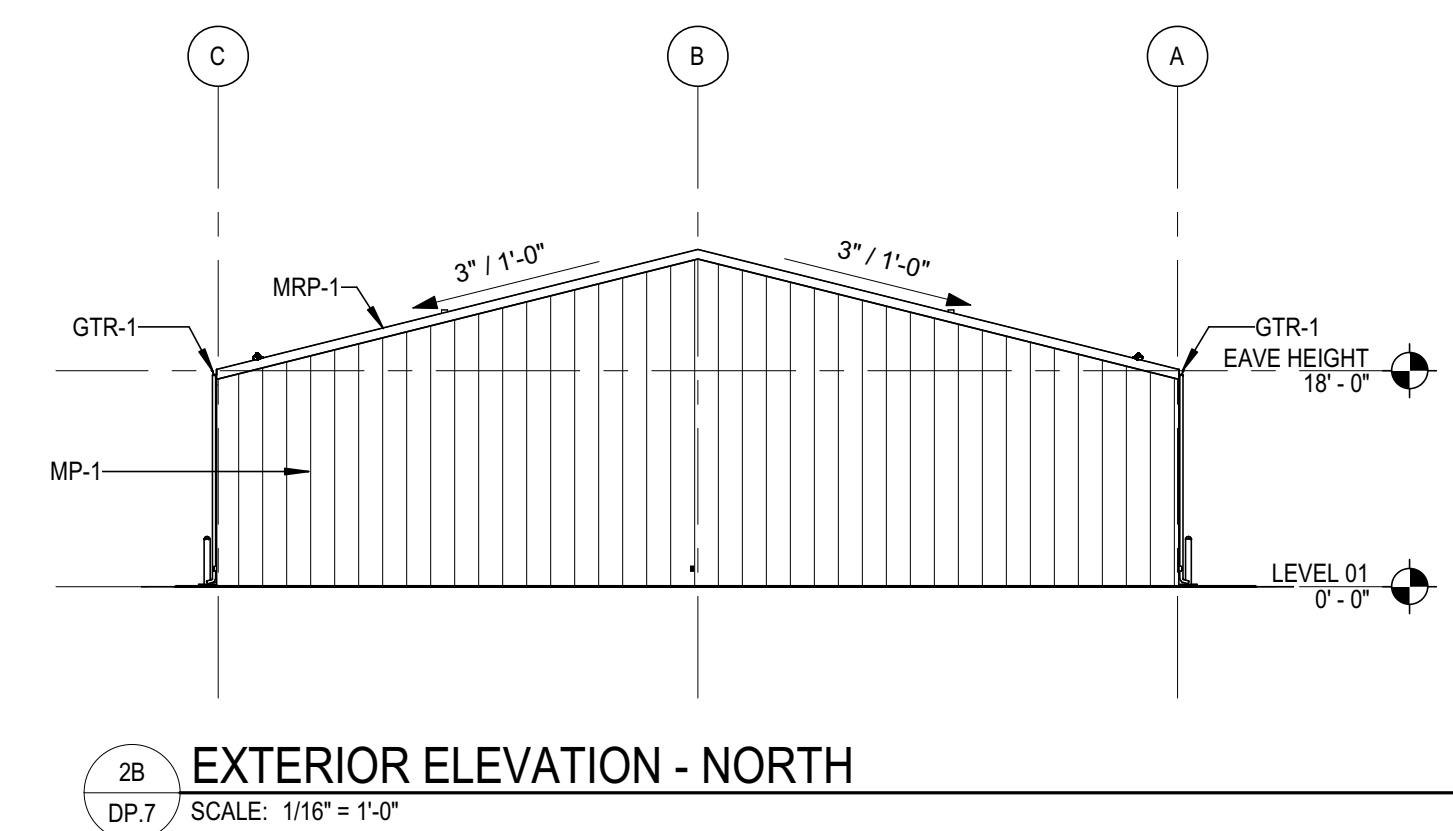


1

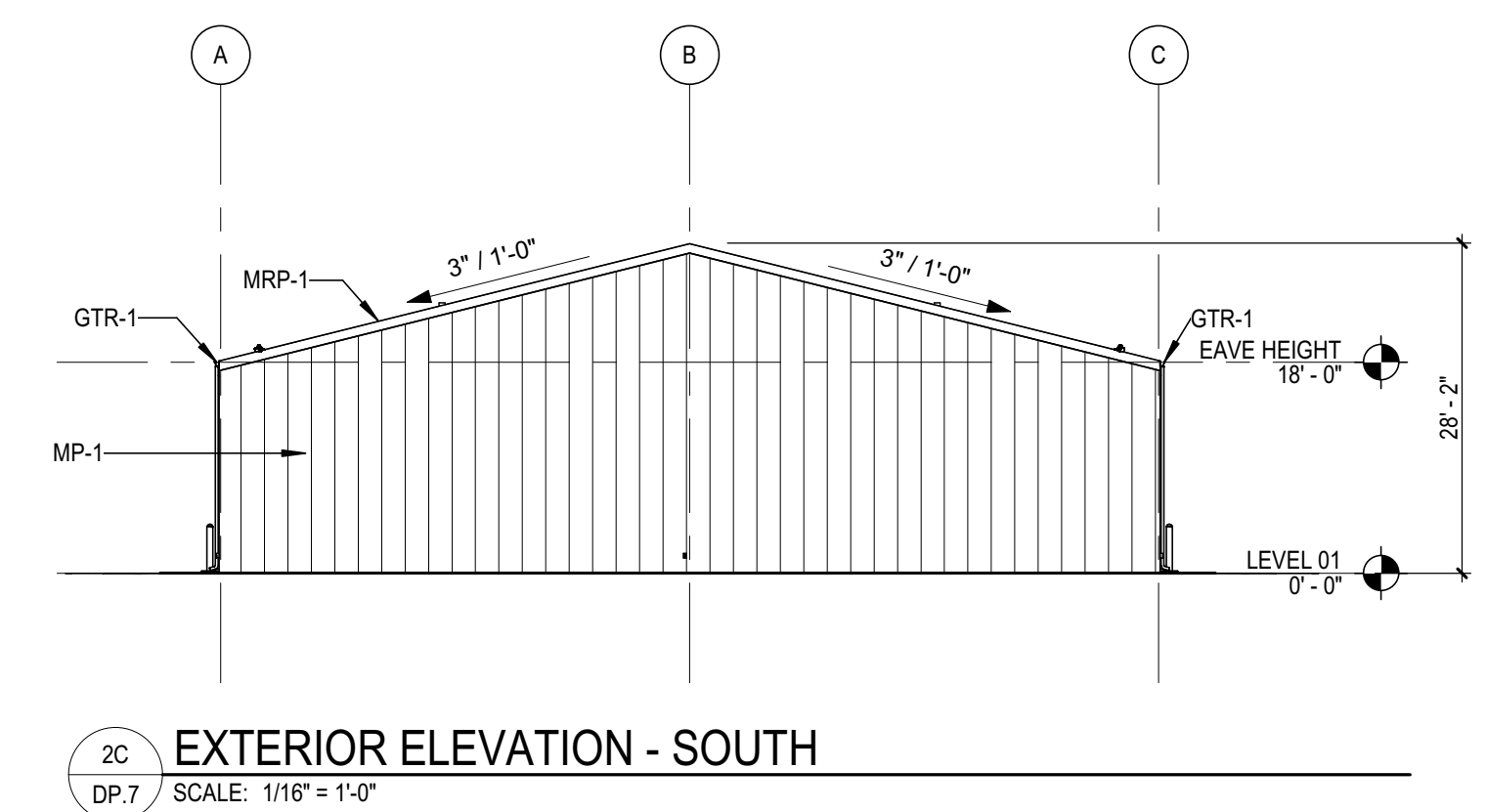
2

3

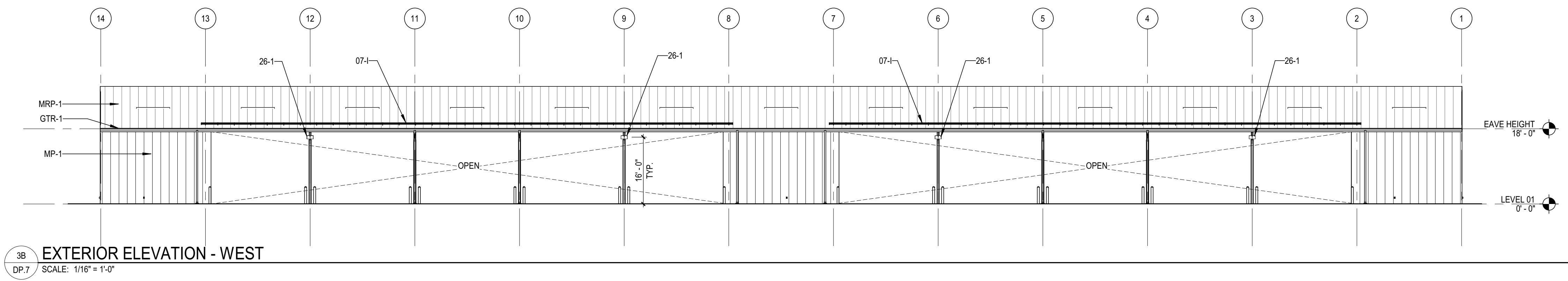
4



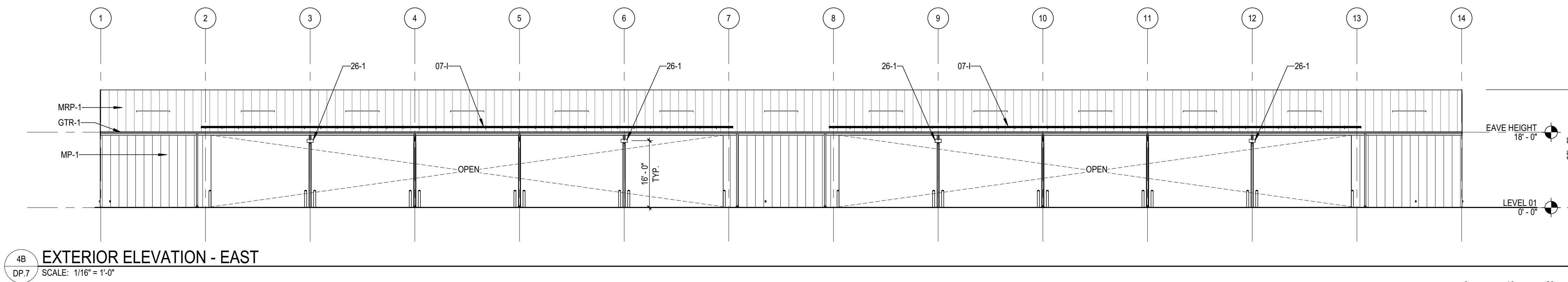
2B EXTERIOR ELEVATION - NORTH
SCALE: 1/16" = 1'-0"



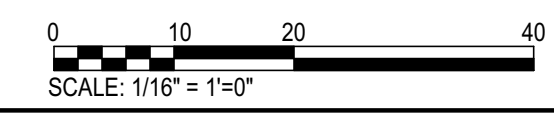
2C EXTERIOR ELEVATION - SOUTH
SCALE: 1/16" = 1'-0"



3B EXTERIOR ELEVATION - WEST
SCALE: 1/16" = 1'-0"



4B EXTERIOR ELEVATION - EAST
SCALE: 1/16" = 1'-0"



Autodesk Docs/37-24108-00_D49 Ground Yard Project/37-24108-00_D49_CoveredParking_AR_2022.rvt
1/29/2025 2:38:04 PM

D49 GROUNDS EXPANSION
COVERED PARKING

10650 E WOODMEN RD
PEYTON, CO 80831

DEVELOPMENT
PLAN
01.28.2025
REVISIONS

37-24108-00
COVERED
PARKING
EXTERIOR
ELEVATIONS

DP.7