

SCHOOL DISTRICT 49

GROUPS EXPANSION

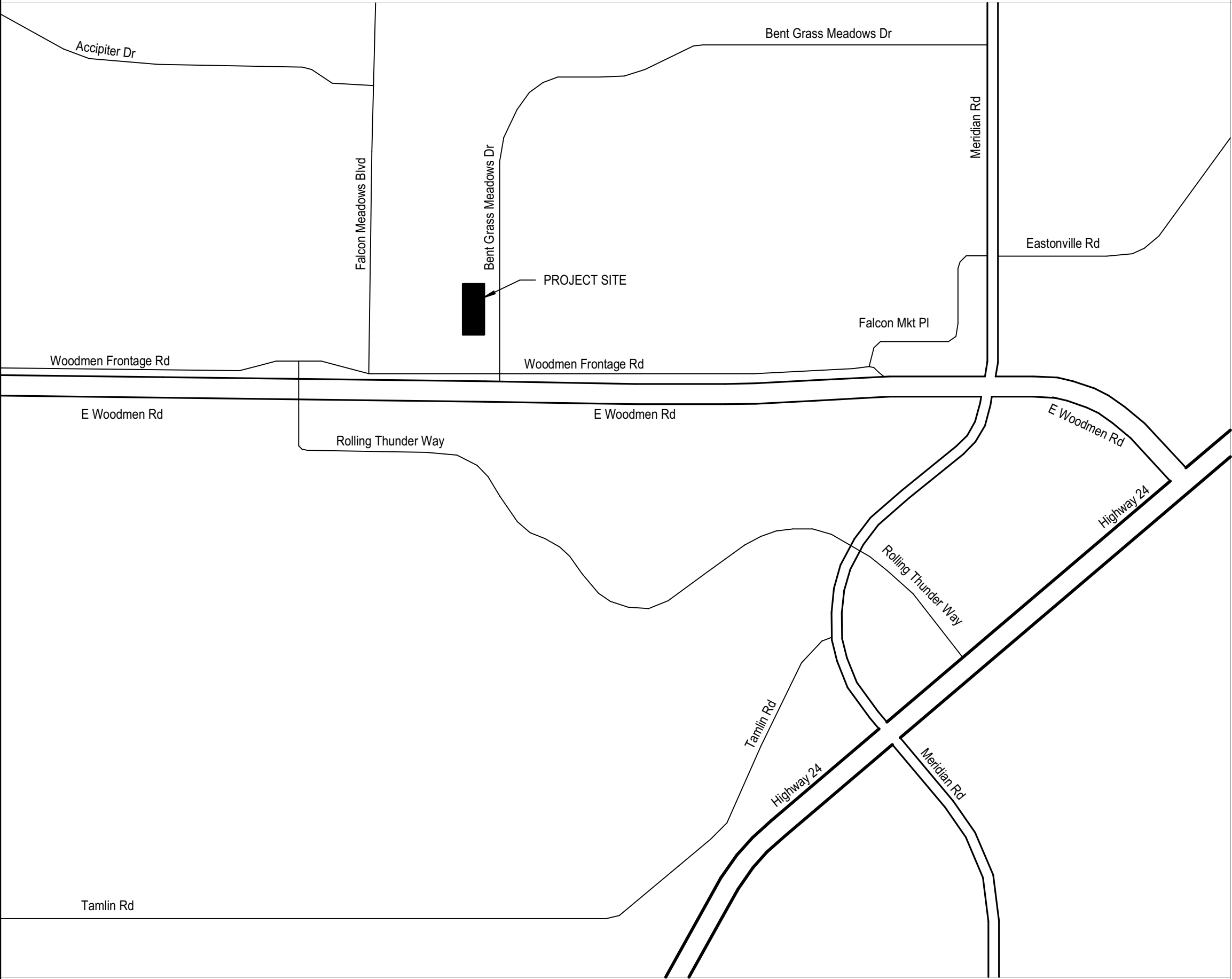
10850 E WOODMEN RD
PEYTON, CO 80831

DEVELOPMENT PLAN

JANUARY 28, 2025

APPROVED
Plan Review
05/02/2025 2:33:26 PM
dsdhowser
EPC Planning & Community
Development Department

VICINITY MAP



INDEX OF DRAWINGS

DEVELOPMENT PLAN			
DP.0	COVER SHEET		
DP.1	DEVELOPMENT PLAN		
DP.2	DEVELOPMENT PLAN		
DP.3	ARCHITECTURAL SITE PLAN		
DP.4	BARN FLOOR PLAN		
DP.5	BARN EXTERIOR ELEVATIONS		
DP.6	COVERED PARKING FLOOR PLAN		
DP.7	COVERED PARKING EXTERIOR ELEVATIONS		
DP.8	PHOTOMETRIC PLAN		

PROJECT TEAM

OWNER SCHOOL DISTRICT 49 10850 E WOODMEN RD, PEYTON, CO 80831 719.491.2182 CONTACT: BRUCE BROWN BRUCE.BROWN@D49.ORG	MECHANICAL / PLUMBING ENGINEER M-E ENGINEERS, INC 1125 KELLY JOHNSON BLVD, SUITE 301 COLORADO SPRINGS, CO 80920 719.536.0036 CONTACT: JEREMY O'BRIEN, PE, LEED AP JEREMY.OBRIEN@ME-ENGINEERS.COM
ARCHITECT / INTERIOR DESIGN DLR GROUP 523 S CASCADE, SUITE 100 COLORADO SPRINGS, CO 80903 719.634.0205 CONTACT: JADEE HARSMA, AIA, LEED AP BD+C JHARSMA@DLRGROUP.COM DAVID RIGGS, AIA DRIGGS@DLRGROUP.COM	ELECTRICAL ENGINEER M-E ENGINEERS, INC 1125 KELLY JOHNSON BLVD, SUITE 301 COLORADO SPRINGS, CO 80920 719.536.0036 CONTACT: JEREMY O'BRIEN, PE JEREMY.OBRIEN@ME-ENGINEERS.COM
CIVIL ENGINEER KIOWA ENGINEERING 1604 S 21ST ST, COLORADO SPRINGS, CO 80904 719.630.7342 CONTACT: ANDY MCCORD AMCCORD@KIOWAENGINEERING.COM	

PROJECT DATA

PROJECT ADDRESS:	10850 E WOODMEN RD, PEYTON, CO 80831
PARCEL:	5301002006
PARCEL SIZE:	10.19 ACRES
LEGAL DESCRIPTION:	LOT 2 LATIGO BUSINESS CENTER FIL NO 1
EXISTING LAND USE/ DEVELOPMENT:	EXEMPT NONRESIDENTIAL LAND - POLITICAL SUBDIVISION
EXISTING ZONING DISTRICT:	EL PASO COUNTY
BARN GROSS BUILDING SF:	10,063 SQUARE FEET
COVERED PARKING GROSS BUILDING SF:	26,000 SQUARE FEET



D49 GROUNDS EXPANSION
CENTRAL OFFICE

10850 E WOODMEN RD
PEYTON, CO 80831

DEVELOPMENT
PLAN
01.28.2025
REVISIONS

37-24108-00

COVER SHEET

DP.0

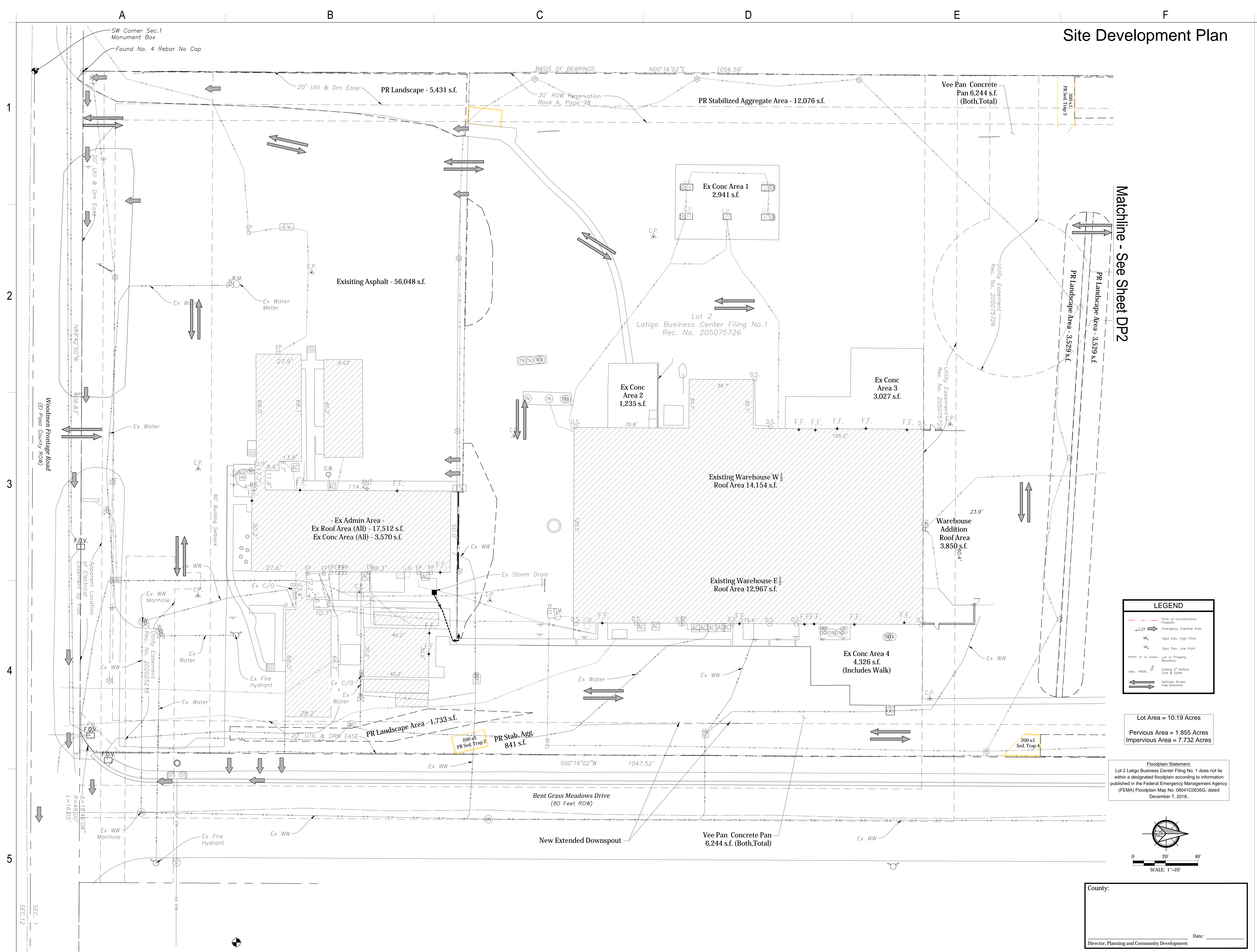
DLR GROUP
© DLR Group

D49 CENTRAL OFFICE GROUNDS

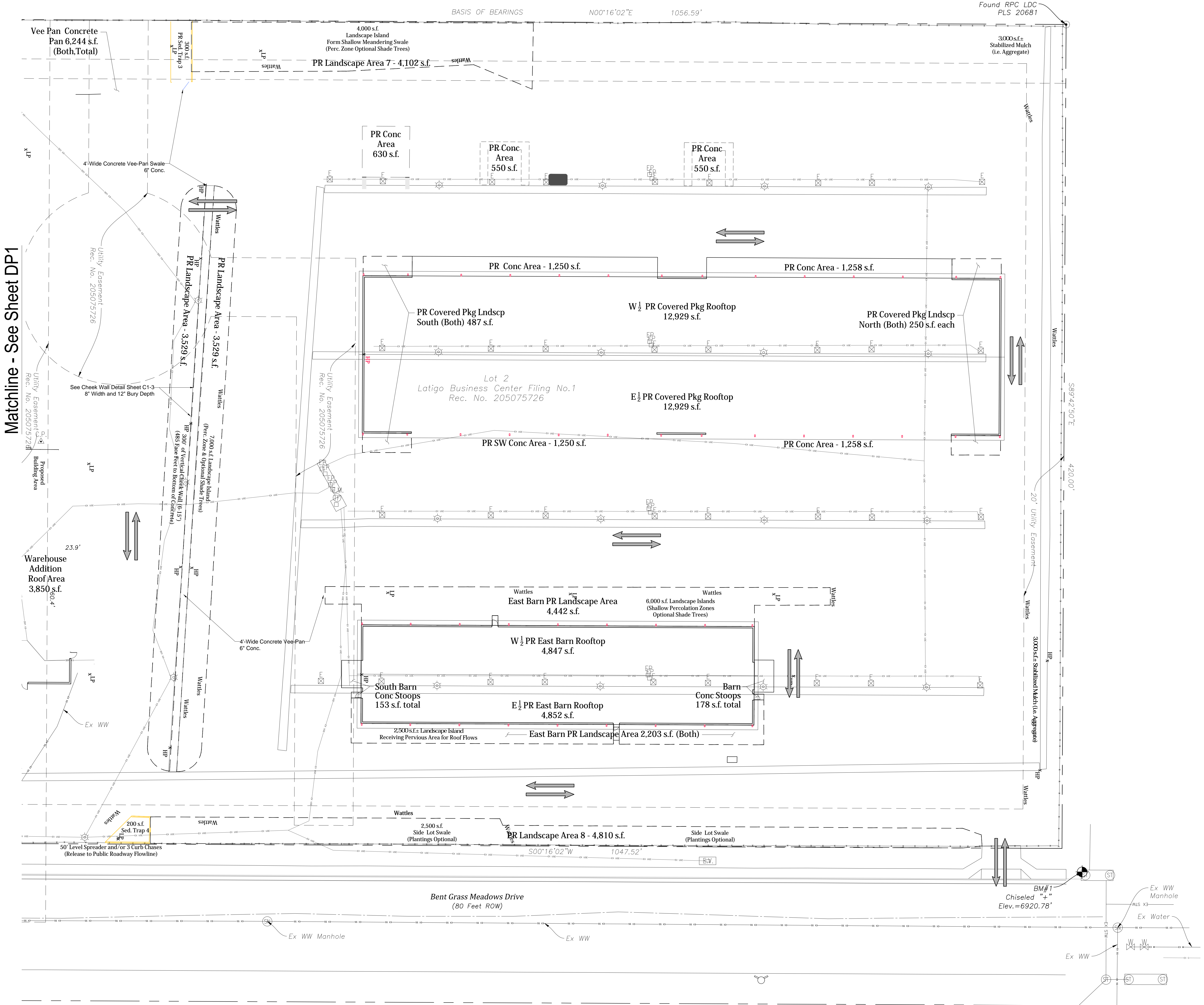
DEVELOPMENT PLAN (South Half)

Kiowa: 23051
37-24108-00

DP 1



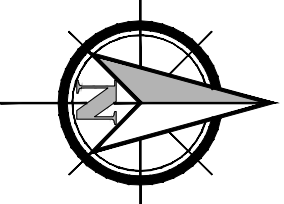
Site Development Plan



LEGEND	
	Time of Concentration Flowpath
	Emergency Overflow Path
	Spot Elev. High Point
	Spot Elev. Low Point
	Lot or Property Boundary
	Existing 6" Vertical Curb & Gutter
	Vehicular Access Flow Directions

Lot Area = 10.19 Acres
Pervious Area = 1.855 Acres
Impervious Area = 7.732 Acres

Floodplain Statement:
Lot 2 Latigo Business Center Filing No. 1 does not lie within a designated floodplain according to information published in the Federal Emergency Management Agency (FEMA) Floodplain Map No. 08041C0535G, dated December 7, 2018.



0 20' 40'
SCALE: 1"=20'

County:

Director, Planning and Community Development

Date:

A

B

C

D

E

REFERENCE KEYNOTES

BL-1 6" INTERIOR PIPE BOLLARD
BL-3 6" EXTERIOR PIPE BOLLARD



D49 GROUNDS EXPANSION

BARN
10650 E WOODMEN RD
PEYTON, CO 80831

DEVELOPMENT
PLAN
01.28.2025
REVISIONS

37-24108-00

BARN FLOOR
PLAN

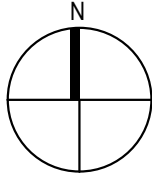
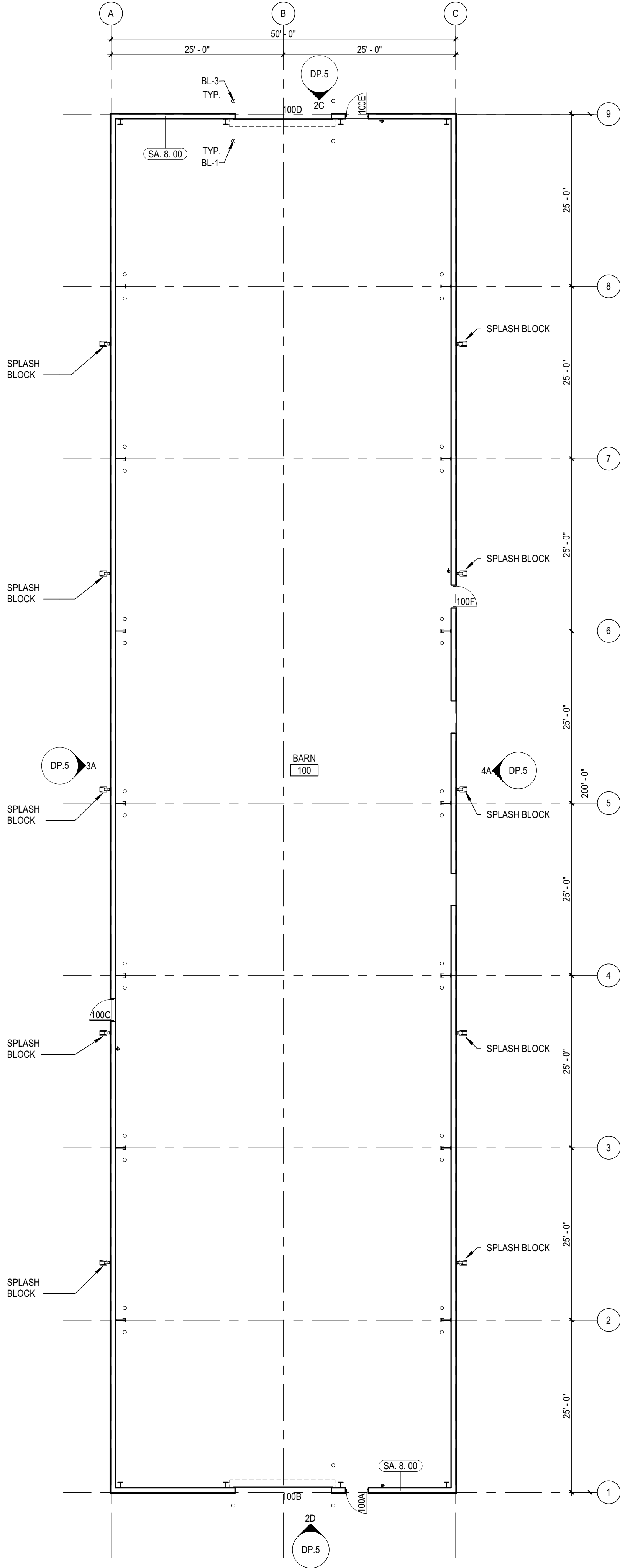
DP.4

1

2

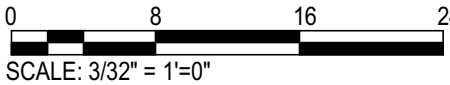
3

4



OVERALL FLOOR PLAN, LEVEL 1

SCALE: 3/32" = 1'-0"



Autodesk Docs/37-24108-00 D49 Ground Yard Project/37-24108-00_D49_CoveredParking_AR_2022.rvt
1/29/2025 1:31:20 PM

1

2

3

4

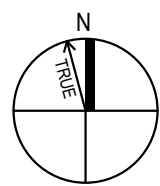
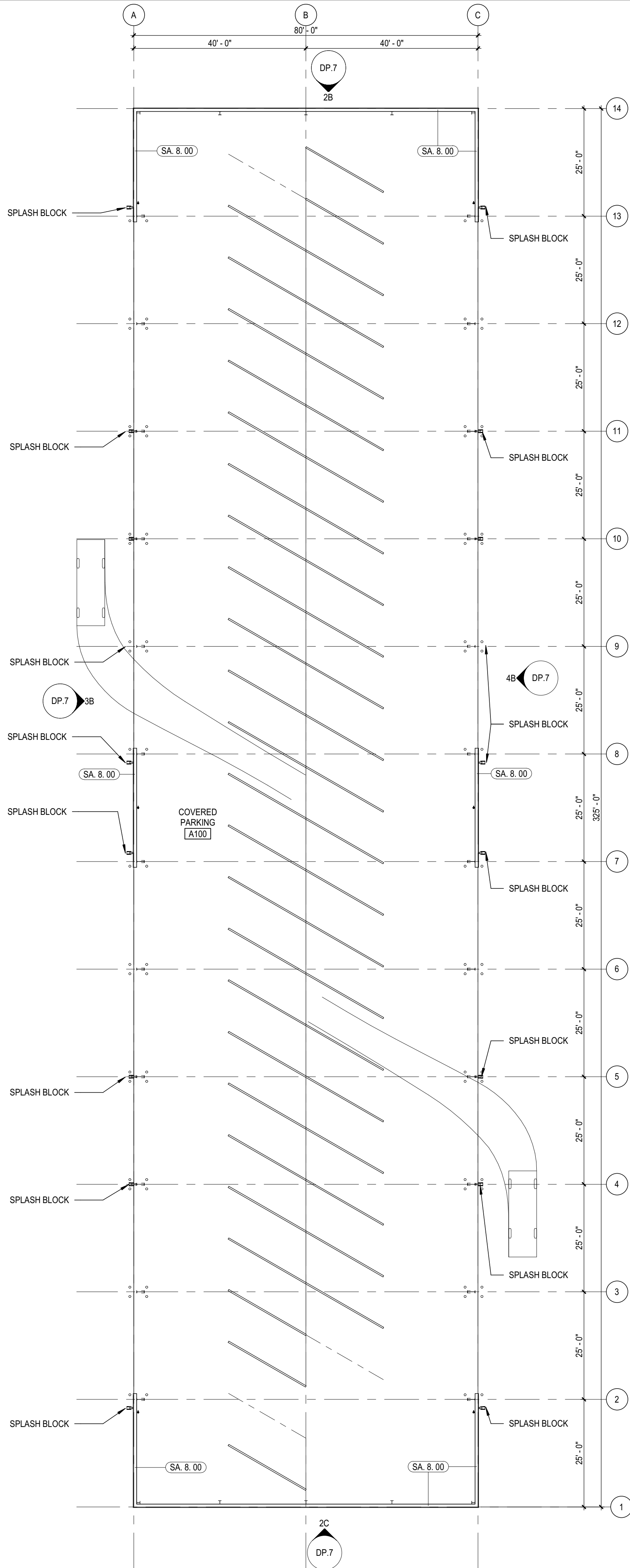
A

B

C

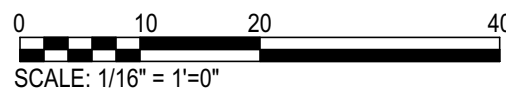
D

E



OVERALL FLOOR PLAN, LEVEL 1

SCALE: 1/16" = 1'-0"



D49 GROUNDS EXPANSION

COVERED PARKING

10650 E WOODMEN RD
PEYTON, CO 80831

DEVELOPMENT
PLAN
01.28.2025
REVISIONS

37-24108-00

COVERED
PARKING FLOOR
PLAN

DP.6

A

B

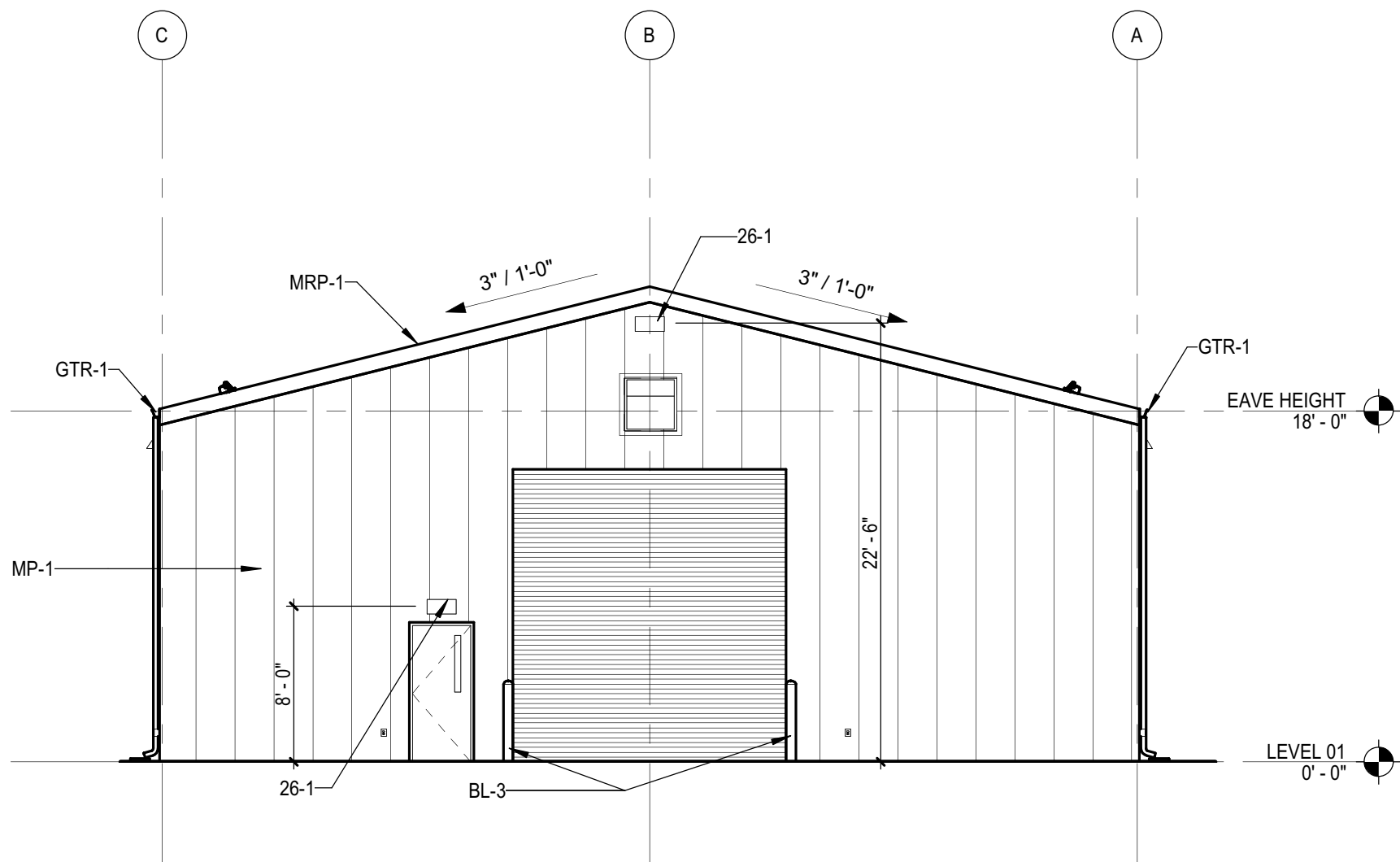
C

D

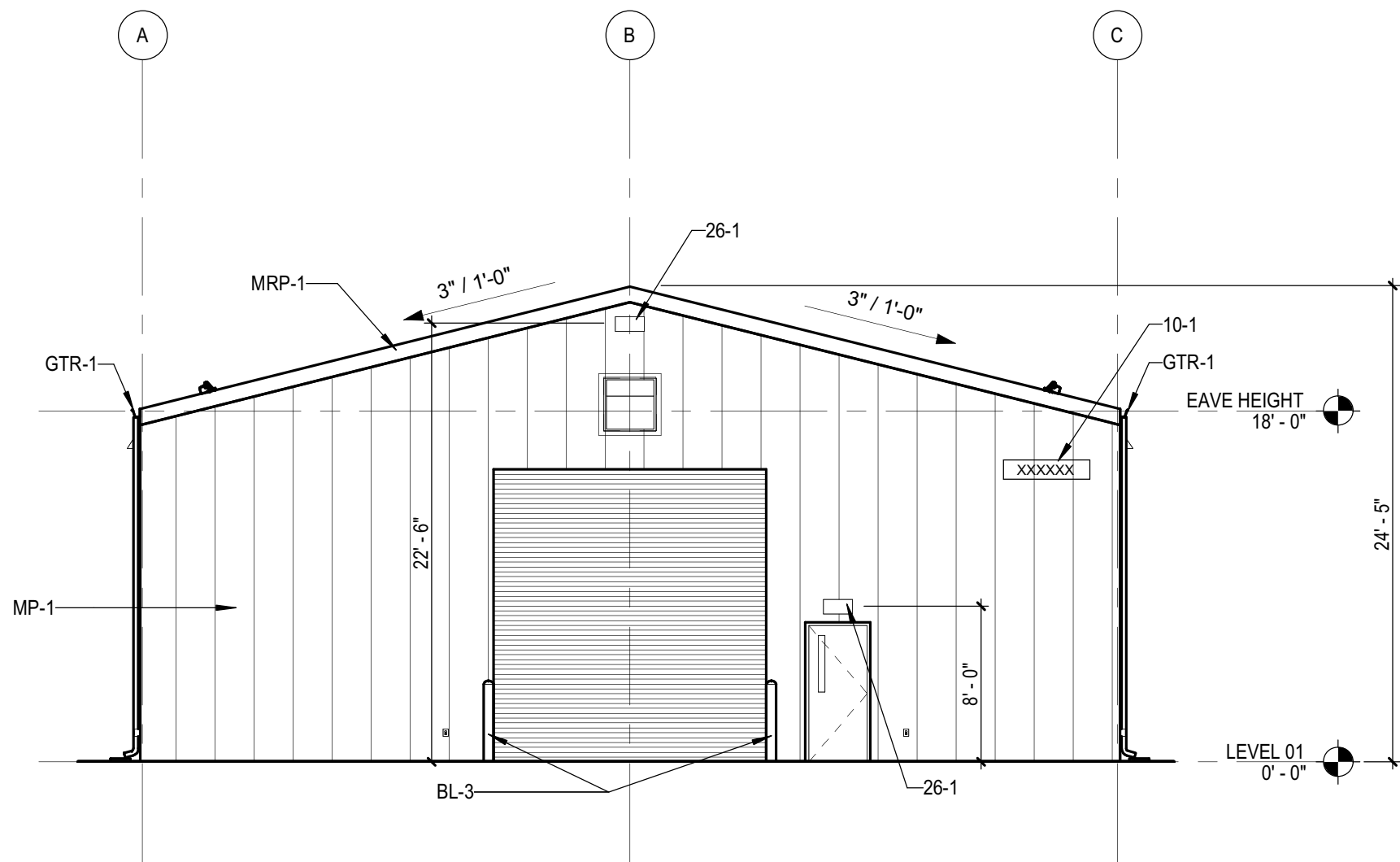
E

REFERENCE KEYNOTES

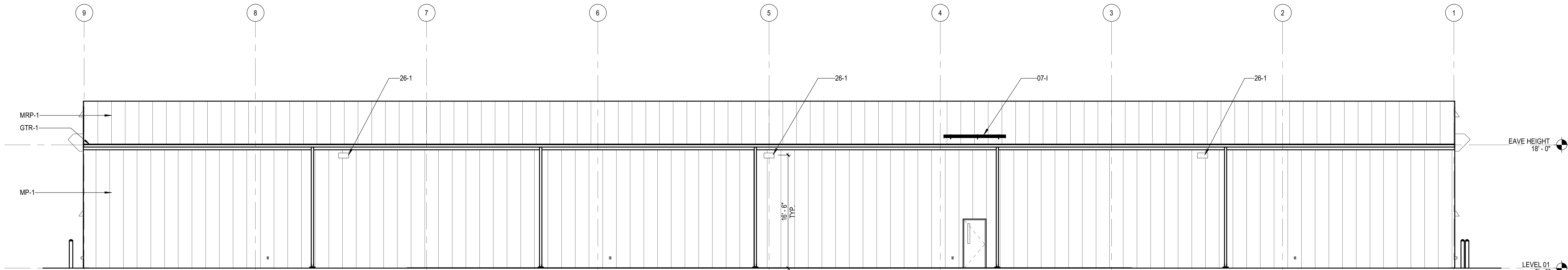
- 07-1 SNOW GUARDS
10-1 BUILDING ADDRESS NUMBERS IN CONTRASTING COLOR FROM BACKGROUND COLOR, 10" HIGH AND 1" WIDE STROKE WIDTH. CONTRACTOR TO COORDINATE EXACT BUILDING ADDRESS NUMBERS AND LOCATION WITH OWNER AND FALCON FIRE DEPARTMENT PRIOR TO FABRICATION.
26-1 BUILDING MOUNTED LIGHT FIXTURE
BL-3 6" EXTERIOR PIPE BOLLARD
GTR-1 PRE-FINISHED METAL GUTTER AND DOWNSPOUT BY METAL BLDG MFR
MP-1 FORMED METAL WALL PANEL BY METAL BLDG MFR
MRP-1 FORMED METAL ROOF PANEL BY METAL BLDG MFR



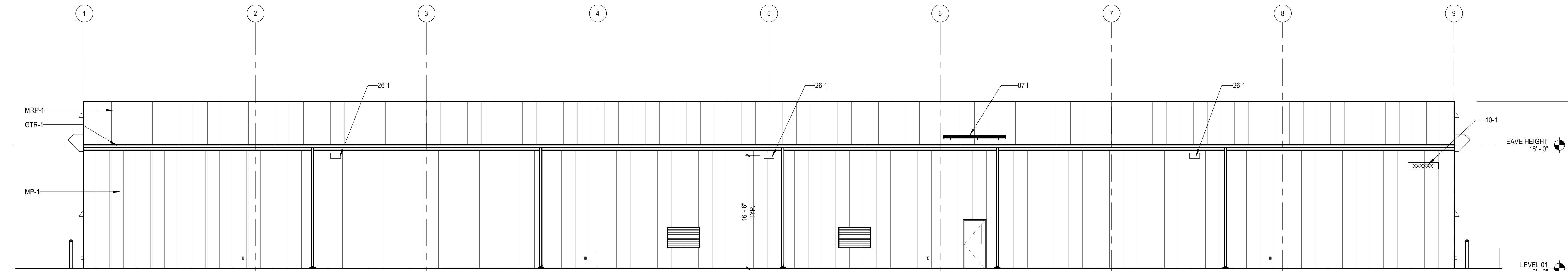
2C EXTERIOR ELEVATION - NORTH
DP.5 SCALE: 1/8" = 1'-0"



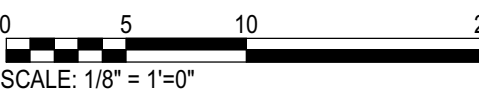
2D EXTERIOR ELEVATION - SOUTH
DP.5 SCALE: 1/8" = 1'-0"



3A EXTERIOR ELEVATION - WEST
DP.5 SCALE: 1/8" = 1'-0"



4A EXTERIOR ELEVATION - EAST
DP.5 SCALE: 1/8" = 1'-0"



A

B

C

D

E

REFERENCE KEYNOTES

- 07-1

10-1
- SNOW GUARDS
BUILDING ADDRESS NUMBERS IN CONTRASTING COLOR FROM BACKGROUND COLOR, 10" HIGH AND 1" WIDE STROKE WIDTH. CONTRACTOR TO COORDINATE EXACT BUILDING ADDRESS NUMBERS AND LOCATION WITH OWNER AND FALCON FIRE DEPARTMENT PRIOR TO FABRICATION.
- 26-1

GTR-1
- BUILDING MOUNTED LIGHT FIXTURE
PRE-FINISHED METAL GUTTER AND DOWNSPOUT BY METAL BLDG MFR
- MP-1

MRP-1
- FORMED METAL WALL PANEL BY METAL BLDG MFR
FORMED METAL ROOF PANEL BY METAL BLDG MFR



D49 GROUNDS EXPANSION

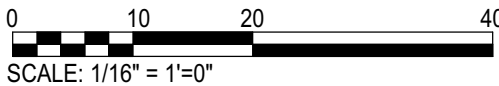
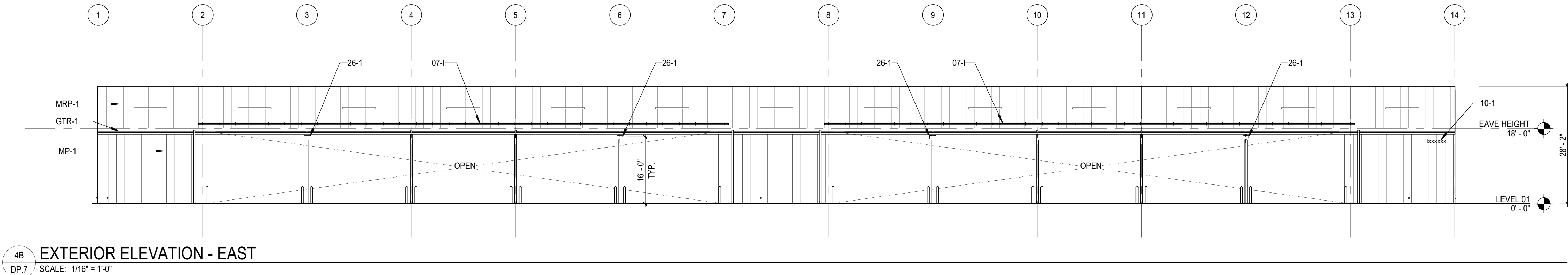
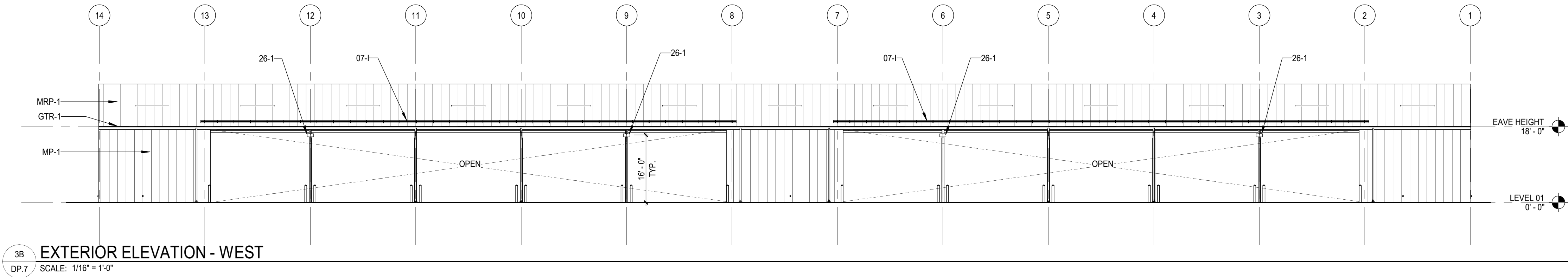
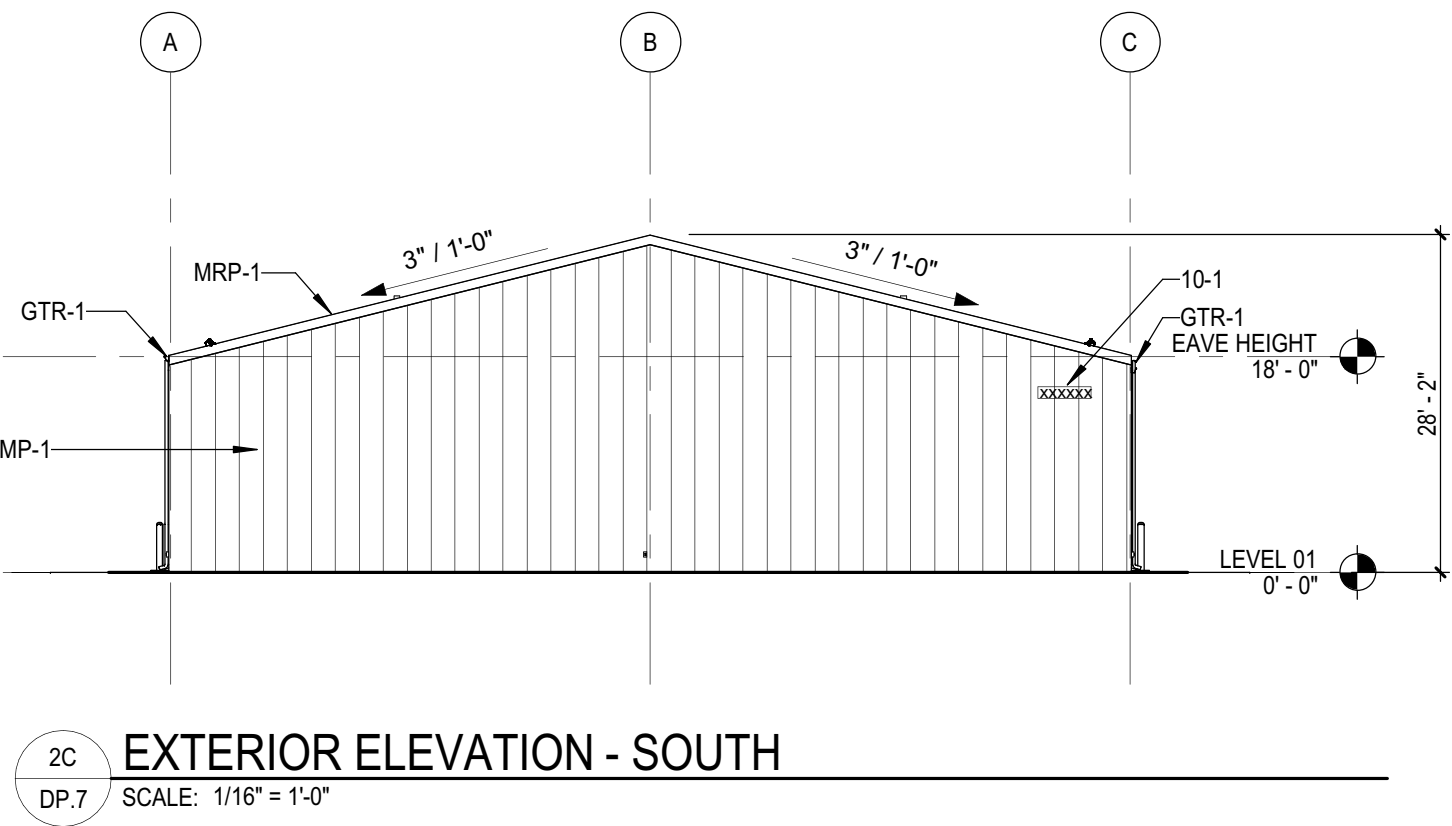
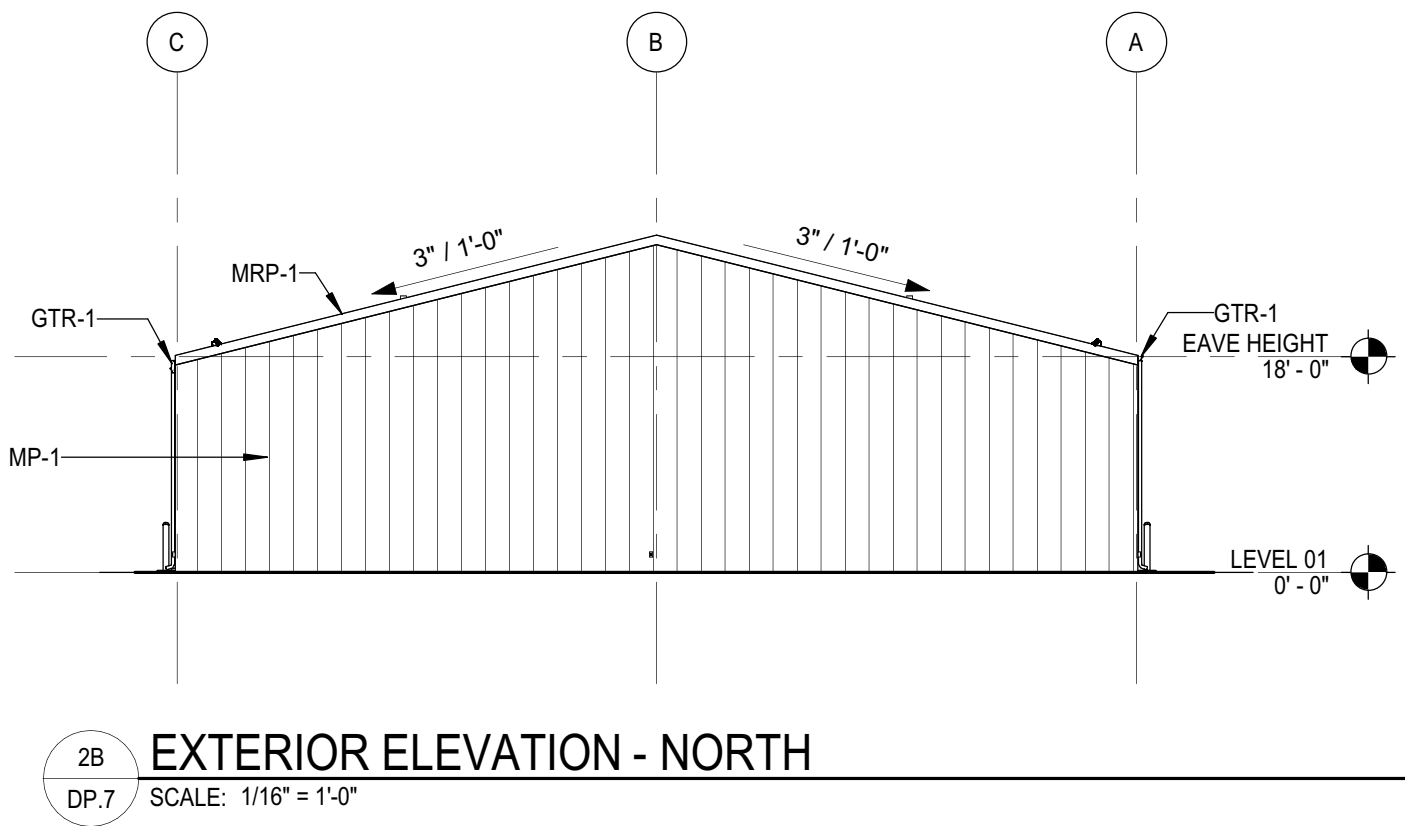
COVERED PARKING
10650 E WOODMEN RD
PEYTON, CO 80831

DEVELOPMENT
PLAN
01.28.2025
REVISIONS

37-24108-00

COVERED
PARKING
EXTERIOR
ELEVATIONS

DP.7



Autodesk Docs://37-24108-00_D49_Grounds_Expansion/37-24108-00_D49_Art_Site_2022.rvt
1/3/2025 10:24:20 AM

1

2

3

4

5

A

B

C

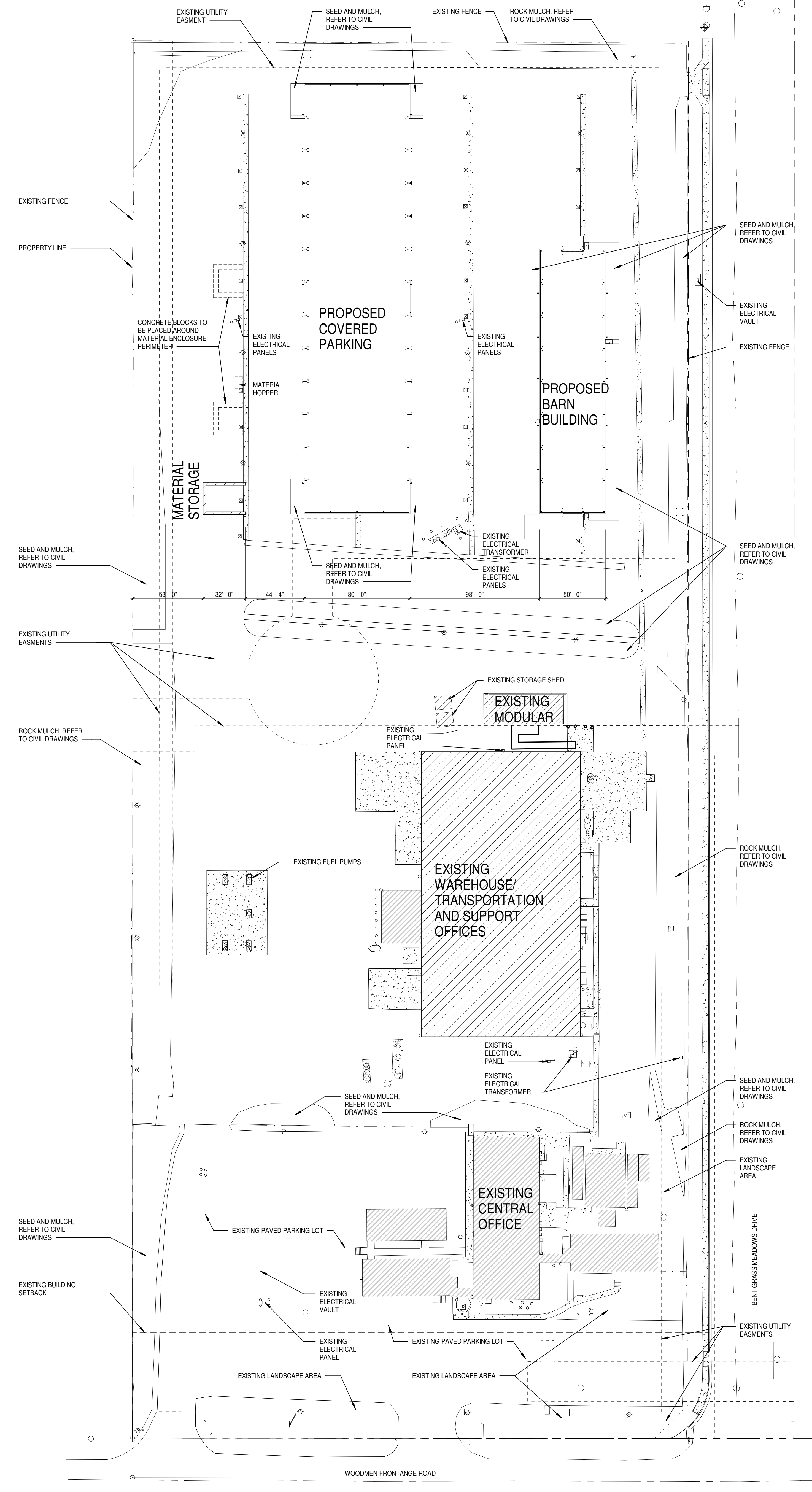
D

E

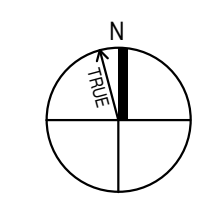
F

Landscape Plan

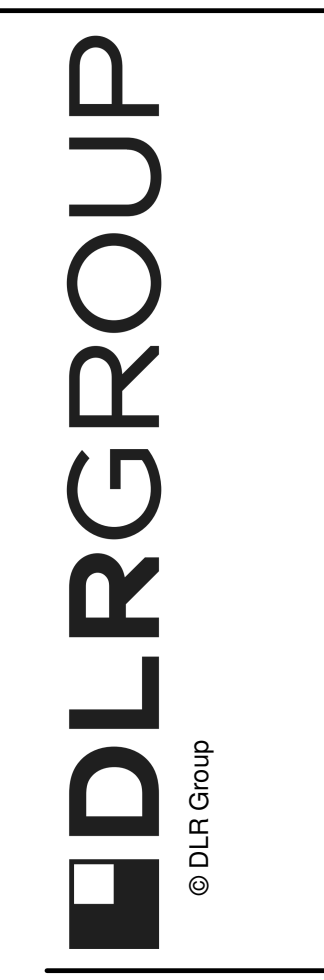
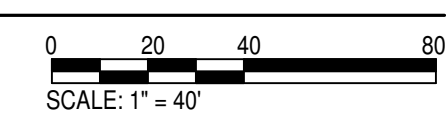
Pursuant to the PCD Director,
landscape screening is not required
for this application.



NOTE: LANDSCAPE AREAS, TO INCLUDE EXISTING LANDSCAPING AND NEW SEED AND ROCK MULCH AREAS, COVER 14.6% OF THE LOT AREA.



SITE PLAN
SCALE: 1" = 40'-0"



D49 GROUNDS EXPANSION
CENTRAL OFFICE
10850 E WOODMEN RD
PEYTON, CO 80831

DEVELOPMENT
PLAN
01.28.2025
REVISIONS

37-24108-00
ARCHITECTURAL
SITE PLAN

DP.3

Autodesk Docu37-24108-00 D49 Grounds Yard Project37-24108-00_D49_CoveredParking_MEP_2022.rvt
1/24/2025 10:57:45 AM

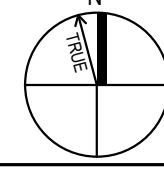
1

2

3

4

5



PHOTOMETRIC PLAN

SCALE: 1/16" = 1'-0"

▼ PARCEL CONTINUES SOUTH; AREA NOT IN PROJECT SCOPE, EXISTING LIGHTING IN AREA TO REMAIN ▼

Luminaire Schedule						
Tag	Symbol	Qty	LLF	Description	Lum. Watts	Lum. Lumens
A		8	0.900	LED AREA LIGHT, TYPE 4 DISTRIBUTION	109.44	14206
B		6	0.900	LED WALL PACK, TYPE 3 DISTRIBUTION	71.6952	10054
C		2	0.900	LED AREA LIGHT, TYPE 4 DISTRIBUTION	133.14	16573
EXIST		12	0.900	EXISTING SITE LIGHT POLE	165.25	21250
D		2	0.900	LED WALL PACK, FORWARD THROW	18.9815	2291



ME Engineers, Inc.
1125 Kelly Johnson Blvd, Suite 301
Colorado Springs, CO 80920
T 719.536.0036 / F 719.536.0037
www.me-engineers.com

LIGHTING PLAN PREPARER:
BEN GRADY, PROJECT ENGINEER
ben.grady@me-engineers.com

DEVELOPMENT
PLAN
01.28.2025
REVISIONS

PHOTOMETRIC
PLAN

DP.8

D49 GROUNDS EXPANSION

10800 E WOODMEN RD
COLORADO SPRINGS, CO 80906

37-24108-00

DLR GROUP
© DLR Group



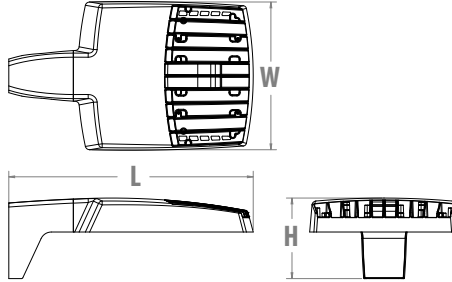
RSX1 LED Area Luminaire



A

Specifications

EPA (ft ² @0°):	0.57 ft ² (0.05 m ²)
Length:	21.8" (55.4 cm) (SPA mount)
Width:	13.3" (33.8 cm)
Height:	3.0" (7.6 cm) Main Body 7.2" (18.4 cm) Arm
Weight: (SPA mount):	22.0 lbs (10.0 kg)



Introduction

The new RSX LED Area family delivers maximum value by providing significant energy savings, long life and outstanding photometric performance at an affordable price. The RSX1 delivers 7,000 to 17,000 lumens allowing it to replace 70W to 400W HID luminaires.

The RSX features an integral universal mounting mechanism that allows the luminaire to be mounted on most existing drill hole patterns. This "no-drill" solution provides significant labor savings. An easy-access door on the bottom of mounting arm allows for wiring without opening the electrical compartment. A mast arm adaptor, adjustable integral slipfitter and other mounting configurations are available.



Items marked by a shaded background qualify for the Design Select program and ship in 15 days or less. To learn more about Design Select, visit www.acuitybrands.com/designselect.
*See ordering tree for details

Design Select options indicated by this color background.

Ordering Information

EXAMPLE: RSX1 LED P4 40K R3 MVOLT SPA DDBXD

RSX1 LED					
Series	Performance Package	Color Temperature	Distribution	Voltage	Mounting
RSX1 LED	P1 P2 P3 P4	30K 3000K 40K 4000K 50K 5000K	R2 Type 2 Wide R3 Type 3 Wide R3S Type 3 Short R4 Type 4 Wide R4S Type 4 Short R5 Type 5 Wide ¹ R5S Type 5 Short ¹ AFR Automotive Front Row AFRR90 Automotive Front Row Right Rotated AFRL90 Automotive Front Row Left Rotated	MVOLT (120V-277V) ² HVOLT (347V-480V) ³ XVOLT (277V-480V) ⁴ (use specific voltage for options as noted) 120 ³ 277 ⁵ 208 ³ 347 ⁵ 240 ³ 480 ⁵	SPA Square pole mounting (3.0" min. SQ pole for 1 at 90°, 3.5" min. SQ pole for 2, 3, 4 at 90°) RPA Round pole mounting (3.2" min. dia. RND pole for 2, 3, 4 at 90°, 3.0" min. dia. RND pole for 1 at 90°, 2 at 180°, 3 at 120°) MA Mast arm adaptor (fits 2-3/8" OD horizontal tenon) IS Adjustable slipfitter (fits 2-3/8" OD tenon) ⁶ WBA Wall bracket ¹ WBASC Wall bracket with surface conduit box AASP Adjustable tilt arm square pole mounting ⁶ AARP Adjustable tilt arm round pole mounting ⁶ AAWB Adjustable tilt arm with wall bracket ⁶ AAWSC Adjustable tilt arm wall bracket and surface conduit box ⁶

Options

Finish

Shipped Installed

HS	House-side shield ⁷
PE	Photocontrol, button style ^{8,9}
PER7	Seven-wire twist-lock receptacle only (no controls) ^{9,10,11}
SF	Single fuse (120, 277, 347) ⁵
DF	Double fuse (208, 240, 480) ⁵
SPD20KV	20KV Surge pack (10KV standard)
FAO	Field adjustable output ⁹
DMG	0-10V dimming extend out back of housing for external control (control ordered separate) ⁹

Shipped Installed

*Standalone and Networked Sensors/Controls (factory default settings, see table page 9)

NLTAIR2 PIRHN	nLight AIR generation 2, with Networked, Bi-Level motion/ambient sensor ^{9,12,13,14}
BAA	Buy America(n) Act and/or Build America Buy America Qualified
CCE	Coastal Construction ¹⁵

*Note: NLTAIR2 PIRHN with nLight Air can be used as a standalone or networked solution. Sensor coverage pattern is affected when luminaire is tilted.

Shipped Separately (requires some field assembly)

EGS	External glare shield ⁷
EGFV	External glare full visor (360° around light aperture) ⁷
BS	Bird spikes ¹⁶

DDBXD	Dark Bronze
DBLXD	Black
DNAXD	Natural Aluminum
DWHXD	White
DBTDX	Textured Dark Bronze
DBLBDX	Textured Black
DNATXD	Textured Natural Aluminum
DWHGXD	Textured White



Ordering Information

Accessories

Ordered and shipped separately.

RSX1HS	RSX1 House side shield (includes 1 shield)
RSX1HSAFRR U	RSX1 House side shield for AFR rotated optics (includes 1 shield)
RSX1EGS (FINISH) U	External glare shield (specify finish)
RSX1EGFV (FINISH) U	External glare full visor (specify finish)
RSXRPA (FINISH) U	RSX Universal round pole adaptor plate (specify finish)
RSXWBA (FINISH) U	RSX WBA wall bracket (specify finish) ¹
RSXSCB (FINISH) U	RSX Surface conduit box (specify finish, for use with WBA, WBA not included)
DLL127F 1.5 JU	Photocell -SSL twist-lock (120-277V) ¹⁷
DLL347F 1.5 CUL JU	Photocell -SSL twist-lock (347V) ¹⁷
DLL480F 1.5 CUL JU	Photocell -SSL twist-lock (480V) ¹⁷
DSHORT SBK U	Shorting cap ¹⁷

NOTES

- Any Type 5 distribution, is not available with WBA.
- MVOLT driver operates on any line voltage from 120-277V (50/60 Hz).
- HVOLT driver operates on any line voltage from 347-480V (50/60 Hz).
- XVOLT driver not available with P1 or P2. XVOLT driver operates on any line voltage from 277V-480V (50/60 Hz). XVOLT not available with fusing (SF or DF) and not available with PE.
- Single fuse (SF) requires 120V, 277V or 347V. Double fuse (DF) requires 208V, 240V or 480V.
- Maximum tilt is 90° above horizontal.
- It may be ordered as an accessory.
- Requires MVOLT or 347V.
- Two or more of the following options cannot be combined including PE, DMG, PER7, FAO and NLTAIR2 PIRHN. (Exception: PE and FAO can be combined; also PE and DMG can be combined.)
- Compatible with standard twist-lock photocells for dusk to dawn operation or advanced control nodes that provide 0-10V dimming signals. Wire 4/Wire 5 wired to dimming leads on driver. Wire6/Wire7 capped inside luminaire. Twistlock photocell ordered and shipped as a separate line item from Acuity Brands Controls. See accessories. Shorting Cap included.
- For units with option PER7, the mounting must be restricted to +/- 45° from horizontal aim per ANSI C136.10-2010.
- Must be ordered with PIRHN.
- Requires MVOLT or HVOLT.
- Must be ordered with NLTAIR2. For additional information on PIRHN visit [here](#).
- CCE option not available with WBA, WBASC, AASP, AARP, AAWB, AAWBSC, EGS, EGFV and BS.
- Must be ordered with fixture for factory pre-drilling.
- Requires luminaire to be specified with PER7 option. Ordered and shipped as a separate line item from Acuity Brands Controls.

External Shields



House Side Shield



External Glare Shield

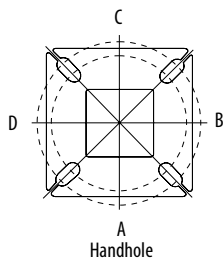


External 360 Full Visor

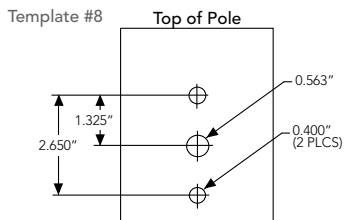
Pole/Mounting Information

Accessories including bullhorns, cross arms and other adapters are available under the accessories tab at Lithonia's Outdoor Poles and Arms product page. Click here to visit [Accessories](#).

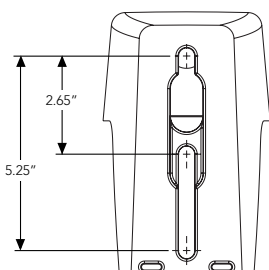
HANDHOLE ORIENTATION



RSX POLE DRILLING



RSX STANDARD ARM & ADJUSTABLE ARM



Round Tenon Mount - Pole Top Slipfitters

Tenon O.D.	RSX Mounting	Single	2 at 180°	2 at 90°	3 at 120°	3 at 90°	4 at 90°
2 - 3/8"	RPA, AARP	AS3-5 190	AS3-5 280	AS3-5 290	AS3-5 320	AS3-5 390	AS3-5 490
2 - 7/8"	RPA, AARP	AST25-190	AST25-280	AST25-290	AST25-320	AST25-390	AST25-490
4"	RPA, AARP	AST35-190	AST35-280	AST35-290	AST35-320	AST35-390	AST35-490

Drill/Side Location by Configuration Type

Drilling Template	Mounting Option	Single	2 @ 180	2 @ 90	3 @ 120	3 @ 90	4 @ 90
	Head Location	Side B	Side B & D	Side B & C	Round Pole Only	Side B, C & D	Side A, B, C & D
#8	Drill Nomenclature	DM19AS	DM28AS	DM29AS	DM32AS	DM39AS	DM49AS

RSX1 - Luminaire EPA

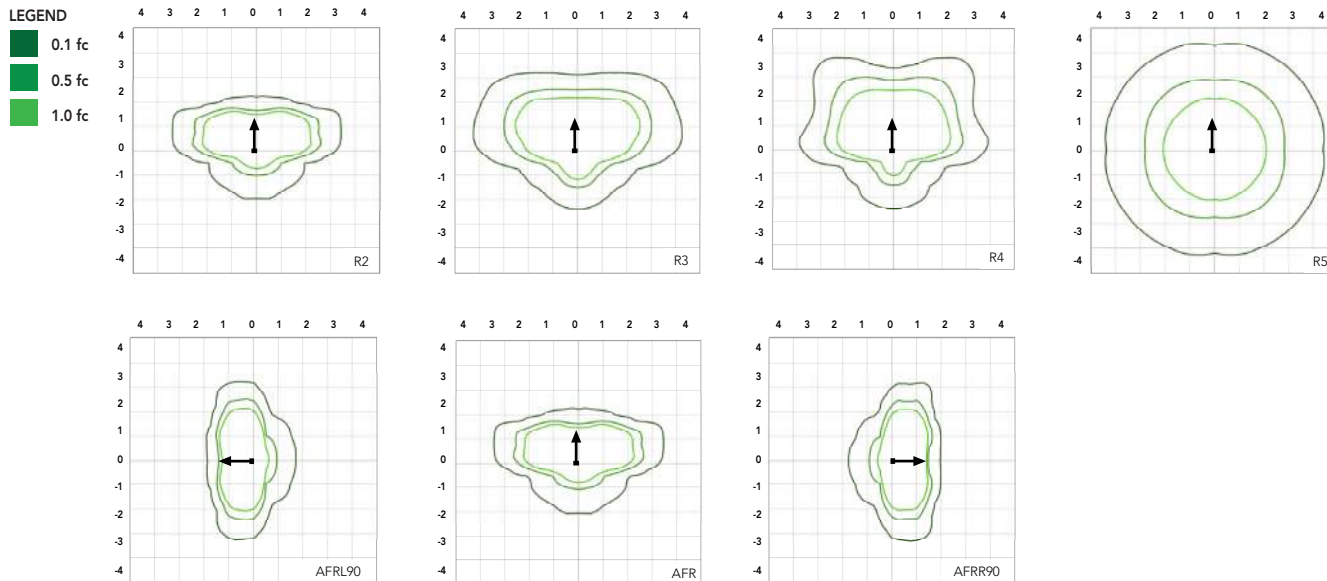
*Includes Luminaire and integral mounting arm. Other tenons, arms, brackets or other accessories are not included in this EPA data.

Fixture Quantity & Mounting Configuration	Single	2 @ 90	2 @ 180	3 @ 90	3 @ 120	4 @ 90	2 Side by Side	3 Side by Side	4 Side by Side
Mounting Type	Tilt								
SPA - Square Pole Adaptor	0°	0.57	1.03	1.05	1.52	1.36	2.03	1.31	2.26
RPA - Round Pole Adaptor		0.62	1.08	1.15	1.62	1.46	2.13	1.36	2.36
MA - Mast Arm Adaptor		0.49	0.95	0.89	1.36	1.2	1.87	1.23	2.1
IS - Integral Slipfitter AASP/AARP - Adjustable Arm Square/Round Pole	0°	0.57	1.03	1.05	1.52	1.36	2.03	1.31	2.26
	10°	0.68	1.34	1.33	2	1.74	2.64	1.35	2.71
	20°	0.87	1.71	1.73	2.56	2.26	3.42	1.75	3.49
	30°	1.24	2.19	2.3	3.21	2.87	4.36	2.49	4.97
	40°	1.81	2.68	2.98	3.85	3.68	5.30	3.62	7.24
	45°	2.11	2.92	3.44	4.2	4.08	5.77	4.22	8.44
	50°	2.31	3.17	3.72	4.52	4.44	6.26	4.62	9.25
	60°	2.71	3.66	4.38	5.21	5.15	7.24	5.43	10.86
	70°	2.78	3.98	4.54	5.67	5.47	7.91	5.52	11.03
	80°	2.76	4.18	4.62	5.97	5.76	8.31	5.51	11.03
	90°	2.73	4.25	4.64	6.11	5.91	8.47	5.45	10.97

Photometric Diagrams

To see complete photometric reports or download .ies files for this product, visit Lithonia Lighting's [RSX Area homepage](#).

Isofootcandle plots for the RSX1 LED P4 40K. Distances are in units of mounting height (20').



Performance Data

Lumen Ambient Temperature (LAT) Multipliers

Use these factors to determine relative lumen output for average ambient temperatures from 0-50°C (32-122°F).

Ambient	Ambient	Lumen Multiplier
0°C	32°F	1.05
5°C	41°F	1.04
10°C	50°F	1.03
15°C	59°F	1.02
20°C	68°F	1.01
25°C	77°F	1.00
30°C	86°F	0.99
35°C	95°F	0.98
40°C	104°F	0.97
45°C	113°F	0.96
50°C	122°F	0.95

Electrical Load

Performance Package	System Watts (W)	Current (A)					
		120V	208V	240V	277V	347V	480V
P1	51W	0.42	0.25	0.21	0.19	0.14	0.11
P2	72W	0.60	0.35	0.30	0.26	0.21	0.15
P3	109W	0.91	0.52	0.45	0.39	0.31	0.23
P4	133W	1.11	0.64	0.55	0.48	0.38	0.27

Projected LED Lumen Maintenance

Operating Hours	50,000	75,000	100,000
Lumen Maintenance Factor	>0.97	>0.95	>0.92

Values calculated according to IESNA TM-21-11 methodology and valid up to 40°C.

Lumen Output

Lumen values are from photometric tests performed in accordance with IESNA LM-79-08. Data is considered to be representative of the configurations shown, within the tolerances allowed by Lighting Facts. Contact factory for performance data on any configurations not shown here.

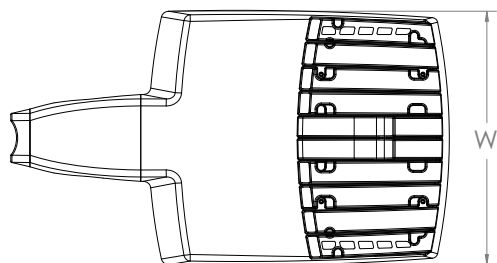
Performance Package	System Watts	Distribution Type	30K (3000K, 70 CRI)					40K (4000K, 70 CRI)					50K (5000K, 70 CRI)				
			Lumens	B	U	G	LPW	Lumens	B	U	G	LPW	Lumens	B	U	G	LPW
P1	51W	R2	6,482	1	0	1	126	7,121	1	0	1	139	7,121	1	0	1	139
		R3	6,459	1	0	2	127	7,096	1	0	2	139	7,096	1	0	2	139
		R3S	6,631	1	0	1	129	7,286	1	0	2	142	7,286	1	0	2	142
		R4	6,543	1	0	2	128	7,189	1	0	2	141	7,189	1	0	2	141
		R4S	6,313	1	0	1	124	6,936	1	0	1	136	6,936	1	0	1	136
		R5	6,631	3	0	2	130	7,286	3	0	2	143	7,286	3	0	2	143
		R5S	6,807	3	0	1	133	7,479	3	0	1	147	7,479	3	0	1	147
		AFR	6,473	1	0	1	127	7,112	1	0	1	139	7,112	1	0	1	139
		AFRR90	6,535	2	0	2	127	7,179	2	0	2	140	7,179	2	0	2	140
P2	72W	AFRL90	6,562	2	0	1	128	7,210	2	0	2	140	7,210	2	0	2	140
		R2	8,991	2	0	1	123	9,878	2	0	1	135	9,878	2	0	1	135
		R3	8,959	2	0	2	124	9,843	2	0	2	137	9,843	2	0	2	137
		R3S	9,198	2	0	2	126	10,106	2	0	2	139	10,106	2	0	2	139
		R4	9,077	2	0	2	126	9,972	2	0	2	139	9,972	2	0	2	139
		R4S	8,757	1	0	2	122	9,622	2	0	2	134	9,622	2	0	2	134
		R5	9,198	4	0	2	128	10,106	4	0	2	140	10,106	4	0	2	140
		R5S	9,443	3	0	1	131	10,374	3	0	1	144	10,374	3	0	1	144
		AFR	8,979	2	0	1	125	9,865	2	0	1	137	9,865	2	0	1	137
P3	109W	AFRR90	9,064	3	0	2	124	9,959	3	0	2	137	9,959	3	0	2	137
		AFRL90	9,102	3	0	2	125	10,001	3	0	2	137	10,001	3	0	2	137
		R2	12,808	2	0	1	117	14,072	2	0	2	129	14,072	2	0	2	129
		R3	12,763	2	0	2	117	14,023	2	0	2	129	14,023	2	0	2	129
		R3S	13,104	2	0	2	120	14,397	2	0	2	132	14,397	2	0	2	132
		R4	12,930	2	0	2	119	14,206	2	0	2	130	14,206	2	0	2	130
		R4S	12,475	2	0	2	114	13,707	2	0	2	126	13,707	2	0	2	126
		R5	13,104	4	0	2	120	14,397	4	0	2	132	14,397	4	0	2	132
		R5S	13,452	3	0	2	123	14,779	3	0	2	136	14,779	3	0	2	136
P4	133W	AFR	12,791	2	0	1	117	14,053	2	0	2	129	14,053	2	0	2	129
		AFRR90	12,913	3	0	3	118	14,187	3	0	3	130	14,187	3	0	3	130
		AFRL90	12,967	3	0	2	118	14,247	3	0	3	130	14,247	3	0	3	130
		R2	14,943	2	0	2	112	16,417	2	0	2	123	16,417	2	0	2	123
		R3	14,890	2	0	3	112	16,360	2	0	3	123	16,360	2	0	3	123
		R3S	15,287	2	0	2	115	16,796	2	0	2	126	16,796	2	0	2	126
		R4	15,085	2	0	3	113	16,574	2	0	3	125	16,574	2	0	3	125
		R4S	14,554	2	0	2	109	15,991	2	0	2	120	15,991	2	0	2	120
		R5	15,287	4	0	2	115	16,796	4	0	2	126	16,796	4	0	2	126
		R5S	15,693	4	0	2	118	17,242	4	0	2	130	17,242	4	0	2	130
		AFR	14,923	2	0	2	112	16,395	2	0	2	123	16,395	2	0	2	123
		AFRR90	15,065	3	0	3	113	16,551	3	0	3	124	16,551	3	0	3	124
		AFRL90	15,128	3	0	3	114	16,621	3	0	3	125	16,621	3	0	3	125

Dimensions & Weights

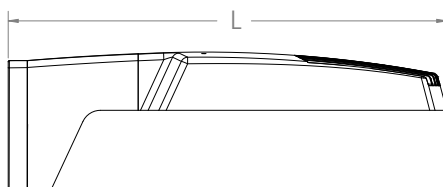
Luminaire Weight by Mounting Type

Mounting Configuration	Total Luminaire Weight
SPA	22 lbs
RPA	24 lbs
MA	22 lbs
WBA	25 lbs
WBASC	28 lbs
IS	25 lbs
AASP	25 lbs
AARP	27 lbs
AAWB	28 lbs
AAWSC	31 lbs

RSX1 with Round Pole Adapter (RPA)



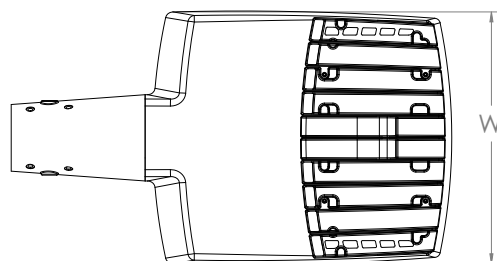
Length: 22.8" (57.9 cm)
 Width: 13.3" (33.8 cm)
 Height: 3.0" (7.6 cm) Main Body
 7.2" (18.4 cm) Arm



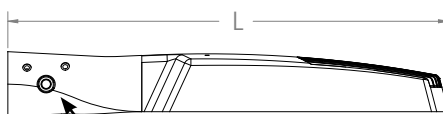
Note: RPA — Round Pole mount can also be used to mount on square poles by omitting the round pole adapter plate shown here.



RSX1 with Mast Arm Adapter (MA)

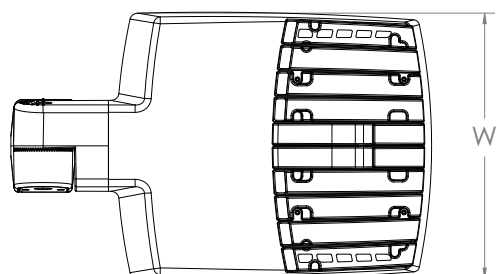


Length: 23.2" (59.1 cm)
 Width: 13.3" (33.8 cm)
 Height: 3.0" (7.6 cm) Main Body
 3.5" (8.9 cm) Arm

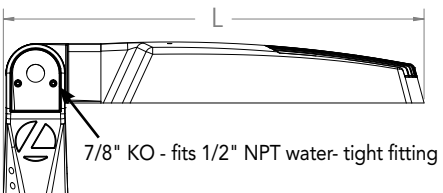


7/16" locking thru bolt/nut provided

RSX1 with Adjustable Slipfitter (IS)



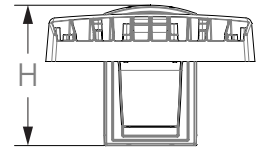
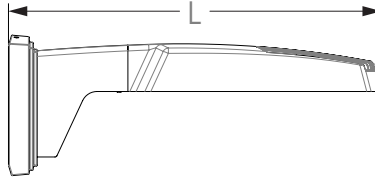
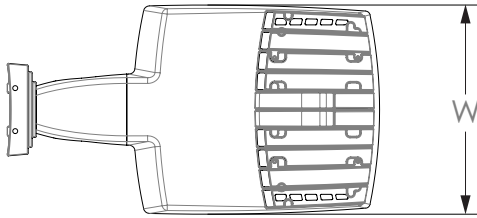
Length: 20.7" (52.7 cm)
 Width: 13.3" (33.8 cm)
 Height: 3.0" (7.6 cm) Main Body
 7.6" (19.3 cm) Arm



7/8" KO - fits 1/2" NPT water-tight fitting

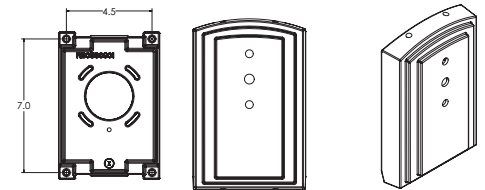
Dimensions

RSX1 with Wall Bracket (WBA)

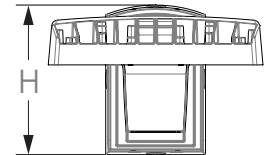
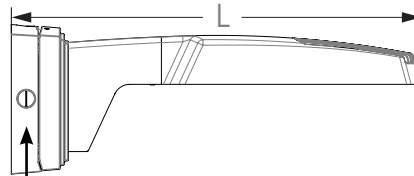
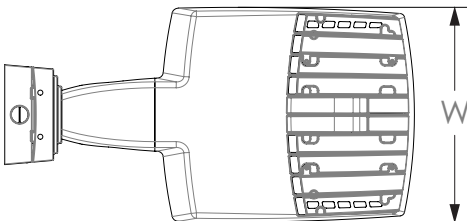


Length: 23.6" (59.9 cm)
 Width: 13.3" (33.8 cm)
 Height: 3.0" (7.6 cm) Main Body
 8.9" (22.6 cm) Arm

Wall Bracket (WBA) Mounting Detail



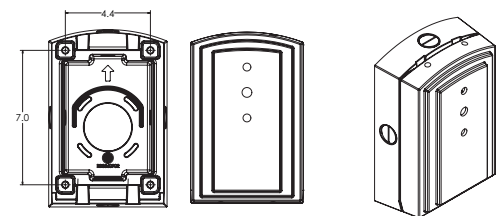
RSX1 with Wall Bracket with Surface Conduit Box (WBASC)



3/4" NPT taps with plugs - Qty (4) provided

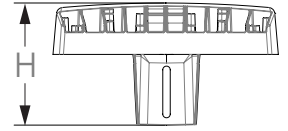
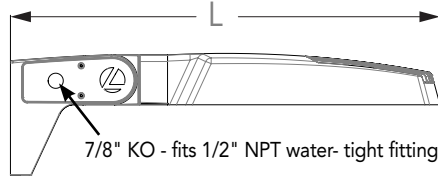
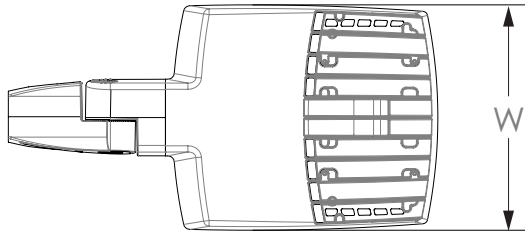
Length: 25.3" (64.3 cm)
 Width: 13.3" (33.8 cm)
 Height: 3.0" (7.6 cm) Main Body
 9.2" (23.4 cm) Arm

Surface Conduit Box (SCB) Mounting Detail



Dimensions

RSX1 with Adjustable Tilt Arm - Square or Round Pole (AASP or AARP)



Length: 25.3" (65.3 cm) **AASP**
 26.3" (66.8 cm) **AARP**
 Width: 13.3" (33.8 cm)
 Height: 3.0" (7.6 cm) Main Body
 7.2" (18.2 cm) Arm



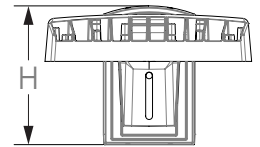
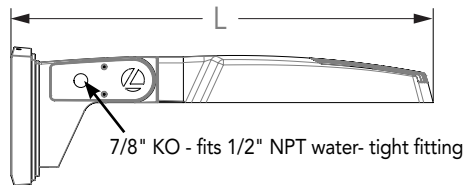
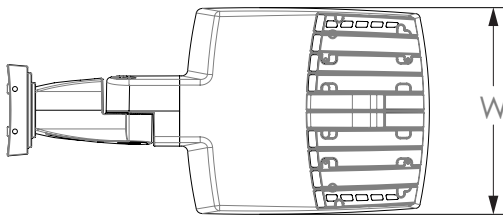
NOTE:
 RPA - Round Pole mount can also be used to mount on square poles by omitting the round pole adapter plate shown here.

Notes

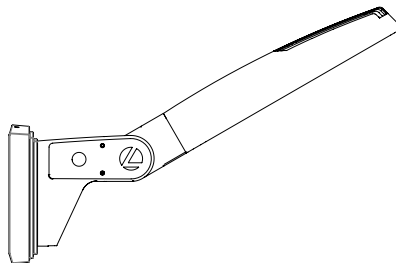
AASP: Requires 3.0" min. square pole for 1 at 90°. Requires 3.5" min. square pole for mounting 2, 3, 4 at 90°.

AARP: Requires 3.2" min. dia. round pole for 2, 3, 4 at 90°. Requires 3.0" min. dia. round pole for mounting 1 at 90°, 2 at 180°, 3 at 120°.

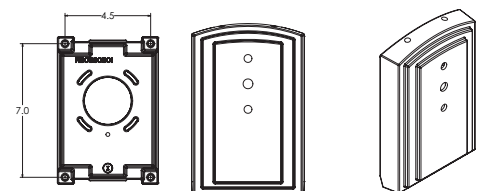
RSX1 with Adjustable Tilt Arm with Wall Bracket (AAWB)



Length: 27.1" (68.8 cm)
 Width: 13.3" (33.8 cm)
 Height: 3.0" (7.6 cm) Main Body
 8.9" (22.6 cm) Arm

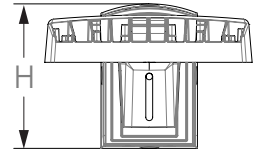
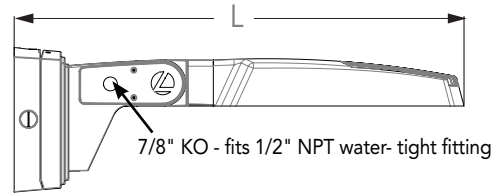
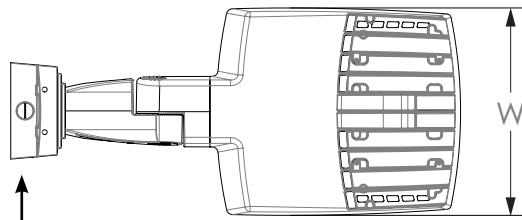


Wall Bracket (WBA) Mounting Detail



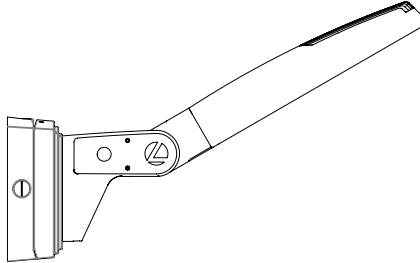
Dimensions

RSX1 with Adjustable Tilt Arm with Wall Bracket and Surface Conduit Box (AAWSC)

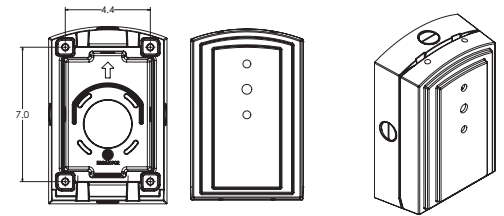


3/4" NPT taps
with plugs - Qty (4)
provided

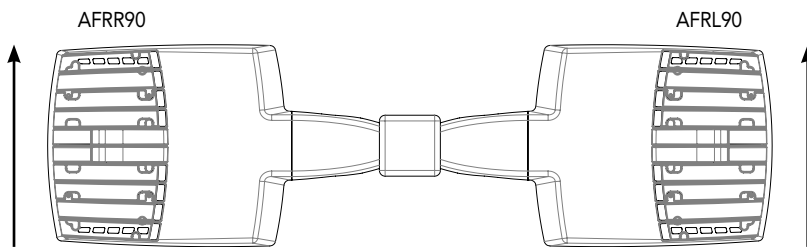
Length: 28.8" (73.2 cm)
Width: 13.3" (33.8 cm)
Height: 3.0" (7.6 cm) Main Body
9.2" (23.4 cm) Arm



Surface Conduit Box (SCB) Mounting Detail



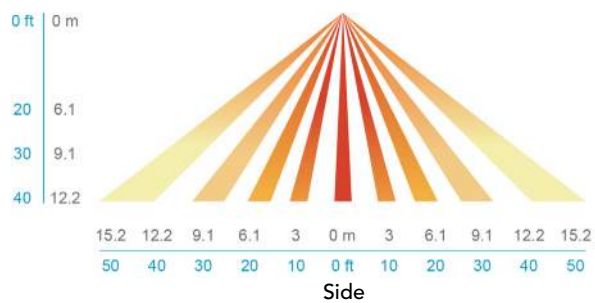
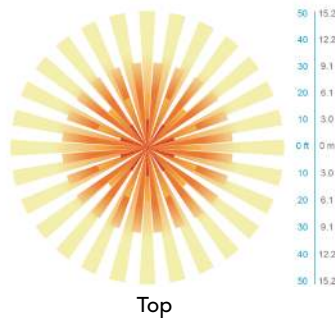
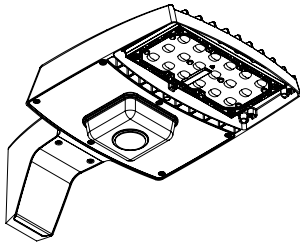
Automotive Front Row - Rotated Optics (AFRL90/R90)



(Example: 2@180 - arrows indicate direction of light exiting the luminaire)

nLight Sensor Coverage Pattern

NLTAIR2 PIRHN



Motion Sensor Default Settings - Option PIRHN						
Option	Dimmed State (unoccupied)	High Level (when occupied)	Photocell Operation	Dwell Time (occupancy time delay)	Ramp-up Time (from unoccupied to occupied)	Ramp-down Time (from occupied to unoccupied)
NLTAIR2 PIRHN	Approx. 30% Output	100% Output	Enabled @ 1.5FC	7.5 minutes	3 seconds	5 minutes

*Note: NLTAIR2 PIRHN default settings including photocell set-point, high/low dim rates, and occupancy sensor time delay are all configurable using the Clairity Pro App. Sensor coverage pattern shown with luminaire at 0°. Sensor coverage pattern is affected when luminaire is tilted.

FEATURES & SPECIFICATIONS

INTENDED USE

The RSX LED area luminaire is designed to provide a long-lasting, energy-efficient solution for the one-for-one replacement of existing metal halide or high pressure sodium lighting. The RSX1 delivers 7,000 to 17,000 lumens and is ideal for replacing 70W to 400W HID pole-mounted luminaires in parking lots and other area lighting applications.

CONSTRUCTION

The RSX LED area luminaire features a rugged die-cast aluminum main body that uses heat-dissipating fins and flow-through venting to provide optimal thermal management that both enhances LED performance and extends component life. Integral “no drill” mounting arm allows the luminaire to be mounted on existing pole drillings, greatly reducing installation labor. The light engines and housing are sealed against moisture and environmental contaminants to IP66. The low-profile design results in a low EPA, allowing pole optimization. All mountings are rated for minimum 1.5 G vibration load per ANSI C136.31. 3G Mountings: Include SPA, RPA, MA, IS, AASP, and AARP rated for 3G vibration. 1.5G Mountings: Include WBA, WBASC, AAWB and AAWSC rated for 1.5G vibration.

FINISH

Exterior parts are protected by a zinc-infused Super Durable TGIC thermoset powder coat finish that provides superior resistance to corrosion and weathering. A tightly controlled multi-stage process ensures superior adhesion as well as a minimum finish thickness of 3 mils. The result is a high-quality finish that is warrantied not to crack or peel.

COASTAL CONSTRUCTION (CCE)

Optional corrosion-resistant construction is engineered with added corrosion protection in materials and/or pre-treatment of base material under super durable paint. Provides additional corrosion protection for applications near coastal areas. Finish is salt spray tested to over 5,000 hours per ASTM B117 with scribe rating of 10. Additional lead times apply.

OPTICS

Precision acrylic refractive lenses are engineered for superior application efficiency, distributing the light to where it is needed most. Available in short and wide pattern distributions including Type 2, Type 3, Type 3S, Type 4, Type 4S, Type 5, Type 5S, AFR (Automotive Front Row), and AFR rotated AFR90 and ARFL90.

ELECTRICAL

Light engine(s) configurations consist of high-efficacy LEDs mounted on metal-core circuit boards and aluminum heat sinks to maximize heat dissipation. Light engines are IP66 rated. LED lumen maintenance is >L92/100,000 hours. CCT's of 3000K, 4000K and 5000K (minimum 70 CRI) are available. Fixtures ship standard with 0-10v dimming driver. Class 1 electronic drivers ensure system power factor >90% and THD <20%. Easily serviceable 10kV surge protection device meets a minimum Category C Low operation (per ANSI/IEEE C62.41.2).

STANDARD CONTROLS

The RSX LED area luminaire has a wide assortment of control options. Dusk to dawn controls include MVOLT and 347V button-type photocells and NEMA twist-lock photocell receptacles.

nLIGHT AIR CONTROLS

The RSX LED area luminaire is also available with nLight® AIR for the ultimate in wireless control. This powerful controls platform provides out-of-the-box basic motion sensing with photocontrol functionality and is suitable for mounting heights up to 40 feet. No commissioning is required when using factory default settings that provide basic stand-alone motion occupancy dimming that is switched on and off with a built-in photocell. See chart above for motion sensor default out-of-box settings. For more advanced wireless functionality, such as group dimming, nLight AIR can be commissioned using a smartphone and the easy-to-use CLAIRITY app. nLight AIR equipped luminaires can be grouped, resulting in motion sensor and photocell group response without the need for additional equipment. Scheduled dimming with motion sensor over-ride can be achieved when used with the nLight Eclipse. Additional information about nLight Air can be found [here](#).

INSTALLATION

Integral “no-drill” mounting arm allows for fast, easy mounting using existing pole drillings. Select the “SPA” option for square poles and the “RPA” option to mount to round poles. Note, the RPA mount can also be used for mounting to square poles by omitting the RPA adapter plate. Select the “MA” option to attach the luminaire to a 2 3/8” horizontal mast arm or the “IS” option for an adjustable slipfitter that mounts on a 2 3/8” OD tenon. The adjustable slipfitter has an integral junction box and offers easy installation. Can be tilted up to 90° above horizontal. Additional mountings are available including a wall bracket, adjustable tilt arm for direct-to-pole and wall and a surface conduit box for wall mount applications.

LISTINGS

CSA Certified to meet U.S. and Canadian standards. Suitable for wet locations. Rated for -40°C minimum ambient. DesignLights Consortium® (DLC) Premium qualified product and DLC qualified product. Not all versions of this product may be DLC Premium qualified or DLC qualified. Please check the DLC Qualified Products List at www.designlights.org/QPL to confirm which versions are qualified.

International Dark-Sky Association (IDA) Fixture Seal of Approval (FSA) is available for all products on this page utilizing 3000K color temperature only. U.S. Patent No. D882, 146S

GOVERNMENT PROCUREMENT

BAA – Buy America(n) Act: Product with the BAA option qualifies as a domestic end product under the Buy American Act as implemented in the FAR and DFARS. Product with the BAA option also qualifies as manufactured in the United States under DOT Buy America regulations. BABA – Build America Buy America: Product with the BAA option also qualifies as produced in the United States under the definitions of the Build America, Buy America Act. Please refer to www.acuitybrands.com/buy-american for additional information.

WARRANTY

5-year limited warranty. This is the only warranty provided and no other statements in this specification sheet create any warranty of any kind. All other express and implied warranties are disclaimed. Complete warranty terms located at:

www.acuitybrands.com/support/warranty/terms-and-conditions

Note: Actual performance may differ as a result of end-user environment and application. All values are design or typical values, measured under laboratory conditions at 25 °C. Specifications subject to change without notice.



WDGE3 LED

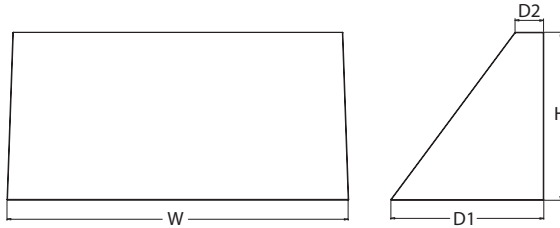
Architectural Wall Sconce



B

Specifications

Depth (D1):	8"
Depth (D2):	1.5"
Height:	9"
Width:	18"
Weight: (without options)	19.5 lbs



Introduction

The WDGE LED family is designed to meet specifier's every wall-mounted lighting need in a widely accepted shape that blends with any architecture. The clean rectilinear design comes in four sizes with lumen packages ranging from 1,200 to 25,000 lumens, providing a true site-wide solution. Embedded with nLight® AIR wireless controls, the WDGE family provides additional energy savings and code compliance.

WDGE3 has been designed to deliver up to 12,000 lumens through a precision refractive lens with wide distribution, perfect for augmenting the lighting from pole mounted luminaires.



Items marked by a shaded background qualify for the Design Select program and ship in 15 days or less. To learn more about Design Select, visit www.acuitybrands.com/designselect.
*See ordering tree for details

WDGE LED Family Overview

Luminaire	Optics	Standard EM, 0°C	Cold EM, -20°C	Sensor	Approximate Lumens (4000K, 80CRI)						
					P0	P1	P2	P3	P4	P5	P6
WDGE1 LED	Visual Comfort	4W		--	750	1,200	2,000	--	--	--	--
WDGE2 LED	Visual Comfort	10W	18W	Standalone / nLight	--	1,200	2,000	3,000	4,500	6,000	--
WDGE2 LED	Precision Refractive	10W	18W	Standalone / nLight	700	1,200	2,000	3,200	4,200	--	--
WDGE3 LED	Precision Refractive	15W	18W	Standalone / nLight	6,000	7,500	8,500	10,000	12,000	--	--
WDGE4 LED	Precision Refractive			Standalone / nLight	--	12,000	16,000	18,000	20,000	22,000	25,000

Ordering Information

EXAMPLE: WDGE3 LED P3 40K 70CRI R3 MVOLT SRM DDBXD

Series	Package	Color Temperature	CRI	Distribution	Voltage	Mounting
WDGE3 LED	P0 P1 P2 P3 P4	30K 3000K 40K 4000K 50K 5000K	70CRI 80CRI	R2 Type 2 R3 Type 3 R4 Type 4 RFT Forward Throw	MVOLT 347 ¹ 480 ¹	Shipped included SRM Surface mounting bracket ICW Indirect Canopy/Ceiling Washer bracket (dry/damp locations only) ² Shipped separately AWS 3/8 inch Architectural wall spacer ³ PBBW Surface-mounted back box (top, left, right conduit entry). Use when there is no junction box available. ³

Options			Finish
E15WH	Emergency battery backup, Certified in CA Title 20 MAEDBS (15W, 5°C min)	Standalone Sensors/Controls PIR Bi-level (100/35%) motion sensor for 8-15' mounting heights. Intended for use on switched circuits with external dusk to dawn switching. PIRHH Bi-level (100/35%) motion sensor for 15-30' mounting heights. Intended for use on switched circuits with external dusk to dawn switching PIR1FC3V Bi-level (100/35%) motion sensor for 8-15' mounting heights with photocell pre-programmed for dusk to dawn operation. PIRHH1FC3V Bi-level (100/35%) motion sensor for 15-30' mounting heights with photocell pre-programmed for dusk to dawn operation.	DDBXD Dark bronze DBLXD Black DNAXD Natural aluminum DWHXD White DSSXD Sandstone DBTDXD Textured dark bronze DBLBDX Textured black DNATXD Textured natural aluminum DWHGXD Textured white DSSTXD Textured sandstone
E20WC	Emergency battery backup, Certified in CA Title 20 MAEDBS (18W, -20°C min)	Networked Sensors/Controls NLTAIR2 PIR Embedded wireless controls by nLight with Passive Infrared Occ sensor and on/off photocell for 8-15' mounting heights. NLTAIR2 PIRHH Embedded wireless controls by nLight with Passive Infrared Occ sensor and on/off photocell for 15'-30' mounting heights. NLTAIREM2 PIR Embedded wireless controls by nLight with UL924 listed emergency operation, Passive Infrared Occ sensor and on/off photocell for 8-15' mounting heights ⁷ NLTAIREM2 PIRHH Embedded wireless controls by nLight with UL924 listed emergency operation, Passive Infrared Occ sensor and on/off photocell for 15'-30' mounting heights	
PE	Photocell, Button Type ⁴	See page 4 for out of box functionality	
DMG	0-10V dimming wires pulled outside fixture (for use with an external control, ordered separately) ⁵		
BCE	Bottom conduit entry for back box (PBBW). Total of 4 entry points.		
SPD10KV	10KV Surge pack ⁶		
CCE	Coastal Construction ³		

Accessories

Ordered and shipped separately.

WDGEAWS DDBXD	WDGE 3/8inch Architectural Wall Spacer (specify finish)
WDGE3PBBW DDBXD U	WDGE3 surface-mounted back box (specify finish)

NOTES

- 347V and 480V not available with E15WH and E20WC.
- Not qualified for DLC. Not available with emergency battery backup or sensors/controls
- For PBBW and AWS with CCE option, require an RFA.
- PE not available in 480V and with sensors/controls.
- DMG option not available with sensors/controls.
- Not available with E20WC option.
- Available with MVOLT only and only rated to 25C ambient.



COMMERCIAL OUTDOOR

One Lithonia Way • Conyers, Georgia 30012 • Phone: 1-800-705-SERV (7378) • www.lithonia.com
© 2019-2024 Acuity Brands Lighting, Inc. All rights reserved.

WDGE3 LED
Rev. 07/08/24

Performance Data

Lumen Output

Lumen values are from photometric tests performed in accordance with IESNA LM-79-08. Data is considered to be representative of the configurations shown, within the tolerances allowed by Lighting Facts. Contact factory for performance data on any configurations not shown here.

Performance Package	System Watts	Dist. Type	30K (3000K, 70 CRI)					40K (4000K, 70 CRI)					50K (5000K, 70 CRI)				
			Lumens	LPW	B	U	G	Lumens	LPW	B	U	G	Lumens	LPW	B	U	G
P0	41W	R2	6,172	151	1	0	1	6,104	149	2	0	1	6,394	156	2	0	1
		R3	6,071	148	1	0	2	6,004	146	1	0	2	6,290	153	1	0	2
		R4	6,256	153	1	0	2	6,187	151	1	0	2	6,481	158	1	0	2
		RFT	6,126	149	1	0	2	6,058	148	1	0	2	6,347	155	1	0	2
P1	52W	R2	7,037	136	1	0	1	7,649	148	2	0	1	7,649	148	2	0	1
		R3	6,922	134	1	0	2	7,524	145	1	0	2	7,524	145	1	0	2
		R4	7,133	138	1	0	2	7,753	150	1	0	2	7,753	150	1	0	2
		RFT	6,985	135	1	0	2	7,592	147	1	0	2	7,592	147	1	0	2
P2	59W	R2	7,968	135	2	0	1	8,661	147	2	0	1	8,661	147	2	0	1
		R3	7,838	133	1	0	2	8,519	144	1	0	2	8,519	144	1	0	2
		R4	8,077	137	1	0	2	8,779	149	1	0	2	8,779	149	1	0	2
		RFT	7,909	134	1	0	2	8,597	146	2	0	2	8,597	146	2	0	2
P3	71W	R2	9,404	132	2	0	1	10,221	143	2	0	1	10,221	143	2	0	1
		R3	9,250	130	2	0	2	10,054	141	2	0	2	10,054	141	2	0	2
		R4	9,532	134	2	0	2	10,361	145	2	0	2	10,361	145	2	0	2
		RFT	9,334	131	2	0	2	10,146	142	2	0	2	10,146	142	2	0	2
P4	88W	R2	11,380	129	2	0	1	12,369	140	2	0	1	12,369	140	2	0	1
		R3	11,194	127	2	0	2	12,167	138	2	0	2	12,167	138	2	0	2
		R4	11,535	131	2	0	2	12,538	142	2	0	2	12,538	142	2	0	2
		RFT	11,295	128	2	0	2	12,277	139	2	0	2	12,277	139	2	0	2

Lumen Output in Emergency Mode (4000K, 70 CRI)

Option	Dist. Type	Lumens
E15WH	R2	3,185
	R3	3,133
	R4	3,229
	RFT	3,162
E20WC	R2	3,669
	R3	3,609
	R4	3,719
	RFT	3,642

Electrical Load

Performance Package	System Watts	Current (A)					
		120V	208V	240V	277V	347V	480V
P1	52W	0.437	0.246	0.213	0.186	0.150	0.110
P2	59W	0.498	0.287	0.251	0.220	0.175	0.126
P3	71W	0.598	0.344	0.300	0.262	0.210	0.152
P4	88W	0.727	0.424	0.373	0.333	0.260	0.190

Lumen Multiplier for 80CRI

CCT	Multiplier
30K	0.891
40K	0.906
50K	0.906

Lumen Ambient Temperature (LAT) Multipliers

Use these factors to determine relative lumen output for average ambient temperatures from 0-40°C (32-104°F).

Ambient		Lumen Multiplier
0°C	32°F	1.05
10°C	50°F	1.03
20°C	68°F	1.01
25°C	77°F	1.00
30°C	86°F	0.99
40°C	104°F	0.97

Projected LED Lumen Maintenance

Data references the extrapolated performance projections for the platforms noted in a 25°C ambient, based on 10,000 hours of LED testing (tested per IESNA LM-80-08 and projected per IESNA TM-21-11).

To calculate LLF, use the lumen maintenance factor that corresponds to the desired number of operating hours below. For other lumen maintenance values, contact factory.

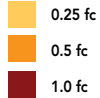
Operating Hours	0	25,000	50,000	100,000
Lumen Maintenance Factor	1.0	>0.98	>0.97	>0.92



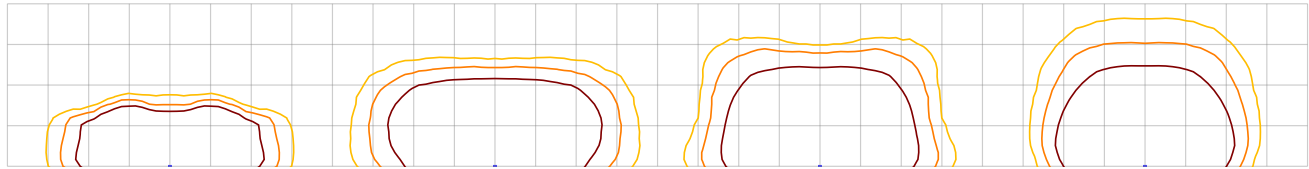
Photometric Diagrams

To see complete photometric reports or download .ies files for this product, visit the Lithonia Lighting WDGE LED homepage. Tested in accordance with IESNA LM-79 and LM-80 standards.

LEGEND



MH = 15ft
Grid = 15ft x 15ft



WDGE3 LED P3 40K 70CRI R2

WDGE3 LED P3 40K 70CRI R3

WDGE3 LED P3 40K 70CRI R4

WDGE3 LED P3 40K 70CRI RFT

Emergency Egress Options

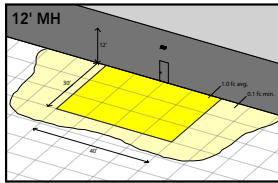
Emergency Battery Backup

The emergency battery backup is integral to the luminaire — no external housing required! This design provides reliable emergency operation while maintaining the aesthetics of the product. All emergency battery backup configurations include an independent secondary driver with an integral relay to immediately detect loss of normal power and automatically energize the luminaire. The emergency battery will power the luminaire for a minimum duration of 90 minutes (maximum duration of three hours) from the time normal power is lost and maintain, minimum of 60% of the light output at the end of 90 minutes.

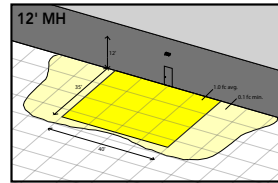
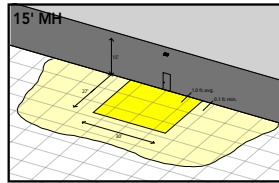
Applicable codes: NFPA 70/NEC – section 700.16, NFPA 101 Life Safety Code Section 7.9

The examples below show illuminance of 1 fc average and 0.1 fc minimum in emergency mode with E15WH or E20WC and R4 distribution.

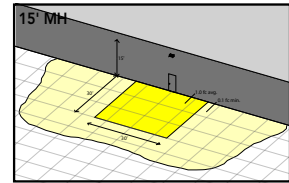
Grid = 10ft x 10ft



WDGE3 LED xx 40K 70CRI R4 MVOLT E15WH



WDGE3 LED xx 40K 70CRI R4 MVOLT E20WC



Motion/Ambient Sensor (PIR, PIRH)

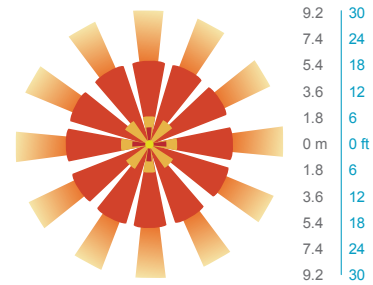
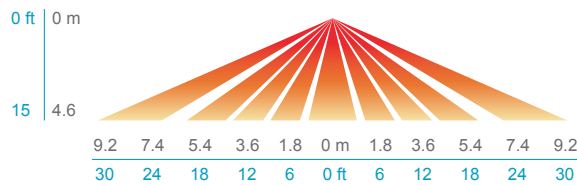
Motion/Ambient sensor (Sensor Switch MSOD) is integrated into the the luminaire. The sensor provides both Motion and Daylight based dimming of the luminaire. For motion detection, the sensor utilizes 100% Digital Passive Infrared (PIR) technology that is tuned for walking size motion while preventing false tripping from the environment. The integrated photocell enables additional energy savings during daytime periods when there is sufficient daylight. Optimize sensor coverage by either selecting PIR or PIRH option. PIR option comes with a sensor lens that is optimized to provide maximum coverage for mounting heights between 8-15ft, while PIRH is optimized for 15-40ft mounting height.

Networked Control (NLTAIR2)

nLight® AIR is a wireless lighting controls platform that allows for seamless integration of both indoor and outdoor luminaires. Five-tier security architecture, 900 MHz wireless communication and app (CLAIRITY™ Pro) based configurability combined together make nLight® AIR a secure, reliable and easy to use platform.

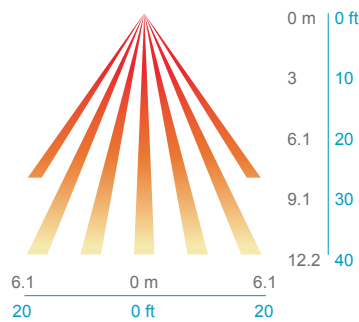
PIR

HIGH VIEW

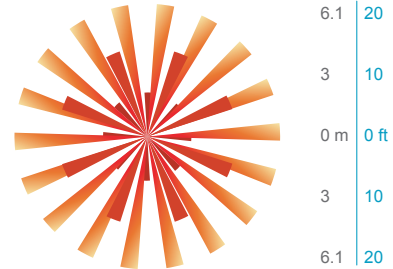


PIRH

SIDE VIEW



TOP VIEW



Motion/Ambient Sensor Default Settings

Option	Dim Level	High Level (when triggered)	Photocell Operation	Motion Time Delay	Ramp-down Time	Ramp-up Time
PIR or PIRH	Motion - 3V (37% of full output) Photocell - 0V (turned off)	10V (100% output)	Enabled @ 5fc	5 min	5 min	Motion - 3 sec Photocell - 45 sec
PIR1FC3V, PIRH1FC3V	Motion - 3V (37% of full output) Photocell - 0V (turned off)	10V (100% output)	Enabled @ 1fc	5 min	5 min	Motion - 3 sec Photocell - 45 sec
NLTAIR2 PIR, NLTAIR2 PIRH, NLTAIREM2 PIR, NLTAIREM2 PIRH (out of box)	Motion - 3V (37% of full output) Photocell - 0V (turned off)	10V (100% output)	Enabled @ 5fc	7.5 min	5 min	Motion - 3 sec Photocell - 45 sec

UL 924 Response - nLight AIR Devices with EM Option

- NLTAIREM2 devices will remain at their high-end trim and ignore wireless lighting control commands, unless a normal-power-sensed (NPS) broadcast is received at least every 8 seconds.
- Using the CLAIRITY+ mobile app, NLTAIREM2 devices must be associated with a group that includes a normal power sensing device to receive NPS broadcasts.
- The non-emergency devices, NLTAIR2 PIR and NLTAIR2 PIRH, with version 3.4 or later firmware can be used for normal power sensing.



**NLTAIR2 PIR – nLight AIR
Motion/Ambient Sensor**

D = 8"
H = 11"
W = 18"



PBBW – Surface-Mounted Back Box
Use when there is no junction box available.

D = 1.75"
H = 9"
W = 18"



AWS – 3/8inch Architectural Wall Spacer

D = 0.38"
H = 4.4"
W = 7.5"

FEATURES & SPECIFICATIONS

INTENDED USE

Common architectural look, with clean rectilinear shape, of the WDGE LED was designed to blend with any type of construction, whether it be tilt-up, frame or brick. Applications include commercial offices, warehouses, hospitals, schools, malls, restaurants, and other commercial buildings.

CONSTRUCTION

The single-piece die-cast aluminum housing to optimize thermal transfer from the light engine and promote long life. The driver is mounted in direct contact with the casting for a low operating temperature and long life. The die-cast door frame is fully gasketed with a one-piece solid silicone gasket to keep out moisture and dust, providing an IP65 rating for the luminaire.

FINISH

Exterior painted parts are protected by a zinc-infused Super Durable TGIC thermoset powder coat finish that provides superior resistance to corrosion and weathering. A tightly controlled multi-stage process ensures a 3 mils thickness for a finish that can withstand extreme climate changes without cracking or peeling. Standard Super Durable colors include dark bronze, black, natural aluminum, sandstone and white. Available in textured and non-textured finishes.

OPTICS

Individually formed acrylic lenses are engineered for superior application efficiency which maximizes the light in the areas where it is most needed. Light engines are available in 3000 K, 4000 K or 5000 K configurations. The WDGE LED has zero uplight and qualifies as a Nighttime Friendly™ product, meaning it is consistent with the LEED® and Green Globes™ criteria for eliminating wasteful uplight.

ELECTRICAL

Light engine consists of high-efficacy LEDs mounted to metal-core circuit boards to maximize heat dissipation and promote long life (up to L92/100,000 hours at 25°C). The electronic driver has a power factor of >90%, THD <20%. Luminaire comes with built in 6kV surge protection, which meets a minimum Category C low exposure (per ANSI/IEEE C62.41.2). Fixture ships standard with 0-10v dimmable driver.

INSTALLATION

A universal mounting plate with integral mounting support arms allows the fixture to hinge down for easy access while making wiring connections. The 3/8" Architectural Wall Spacer (AWS) can be used to create a floating appearance or to accommodate small imperfections in the wall surface. The ICW option can be used to mount the luminaire inverted for indirect lighting in dry and damp locations. Design can withstand up to a 1.5 G vibration load rating per ANSI C136.31.

LISTINGS

CSA certified to U.S. and Canadian standards. Light engines are IP66 rated; luminaire is IP65 rated. PIR options are rated for wet location. Rated for -40°C minimum ambient. DesignLights Consortium® (DLC) Premium qualified product and DLC qualified product. Not all versions of this product may be DLC Premium qualified or DLC qualified. Please check the DLC Qualified Products List at www.designlights.org/QPL to confirm which versions are qualified. International Dark-Sky Association (IDA) Fixture Seal of Approval (FSA) is available for all products on this page utilizing 3000K color temperature and SRM mounting only.

GOVERNMENT PROCUREMENT

BABA – Build America Buy America: Product qualifies as produced in the United States under the definitions of the Build America, Buy America Act. Please refer to www.acuitybrands.com/buy-american for additional information.

WARRANTY

5-year limited warranty. This is the only warranty provided and no other statements in this specification sheet create any warranty of any kind. All other express and implied warranties are disclaimed. Complete warranty terms located at: www.acuitybrands.com/support/warranty/terms-and-conditions

Note: Actual performance may differ as a result of end-user environment and application. All values are design or typical values, measured under laboratory conditions at 25 °C. Specifications subject to change without notice.



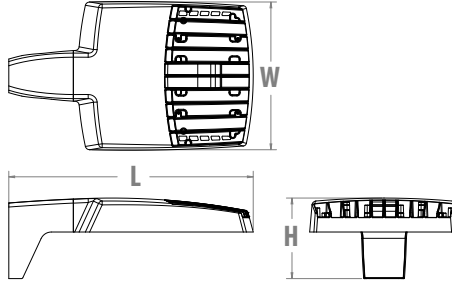
RSX1 LED Area Luminaire



C

Specifications

EPA (ft ² @0°):	0.57 ft ² (0.05 m ²)
Length:	21.8" (55.4 cm) (SPA mount)
Width:	13.3" (33.8 cm)
Height:	3.0" (7.6 cm) Main Body 7.2" (18.4 cm) Arm
Weight: (SPA mount):	22.0 lbs (10.0 kg)



Introduction

The new RSX LED Area family delivers maximum value by providing significant energy savings, long life and outstanding photometric performance at an affordable price. The RSX1 delivers 7,000 to 17,000 lumens allowing it to replace 70W to 400W HID luminaires.

The RSX features an integral universal mounting mechanism that allows the luminaire to be mounted on most existing drill hole patterns. This "no-drill" solution provides significant labor savings. An easy-access door on the bottom of mounting arm allows for wiring without opening the electrical compartment. A mast arm adaptor, adjustable integral slipfitter and other mounting configurations are available.



Items marked by a **shaded background** qualify for the Design Select program and ship in 15 days or less. To learn more about Design Select, visit www.acuitybrands.com/designselect.
*See ordering tree for details

Design Select options indicated by this color background.

Ordering Information

EXAMPLE: RSX1 LED P4 40K R3 MVOLT SPA DDBXD

RSX1 LED					
Series	Performance Package	Color Temperature	Distribution	Voltage	Mounting
RSX1 LED	P1	30K 3000K	R2 Type 2 Wide	MVOLT (120V-277V) ²	SPA Square pole mounting (3.0" min. SQ pole for 1 at 90°, 3.5" min. SQ pole for 2, 3, 4 at 90°)
	P2	40K 4000K	R3 Type 3 Wide	HVOLT (347V-480V) ³	RPA Round pole mounting (3.2" min. dia. RND pole for 2, 3, 4 at 90°, 3.0" min. dia. RND pole for 1 at 90°, 2 at 180°, 3 at 120°)
	P3	50K 5000K	R3S Type 3 Short	XVOLT (277V-480V) ⁴	MA Mast arm adaptor (fits 2-3/8" OD horizontal tenon)
	P4		R4 Type 4 Wide	(use specific voltage for options as noted)	IS Adjustable slipfitter (fits 2-3/8" OD tenon) ⁶
			R4S Type 4 Short	120 ³ 277 ⁵	WBA Wall bracket ¹
			R5 Type 5 Wide ¹	208 ³ 347 ⁵	WBASC Wall bracket with surface conduit box
			R5S Type 5 Short ¹	240 ³ 480 ⁵	AASP Adjustable tilt arm square pole mounting ⁶
			AFR Automotive Front Row		AARP Adjustable tilt arm round pole mounting ⁶
			AFRR90 Automotive Front Row Right Rotated		AAWB Adjustable tilt arm with wall bracket ⁶
			AFRL90 Automotive Front Row Left Rotated		AAWSC Adjustable tilt arm wall bracket and surface conduit box ⁶

Options		Finish
Shipped Installed		DDBXD Dark Bronze
HS House-side shield ⁷	Shipped Installed	DBLXD Black
PE Photocontrol, button style ^{8,9}	*Standalone and Networked Sensors/Controls (factory default settings, see table page 9)	DNAXD Natural Aluminum
PER7 Seven-wire twist-lock receptacle only (no controls) ^{9,10,11}	NLTAIR2 PIRHN nLight AIR generation 2, with Networked, Bi-Level motion/ambient sensor ^{9,12,13,14}	DWHXD White
SF Single fuse (120, 277, 347) ⁵	BAA Buy America(n) Act and/or Build America Buy America Qualified	DBBTXD Textured Dark Bronze
DF Double fuse (208, 240, 480) ⁵	CCE Coastal Construction ¹⁵	DBLBXD Textured Black
SPD20KV 20KV Surge pack (10KV standard)	*Note: NLTAIR2 PIRHN with nLight Air can be used as a standalone or networked solution. Sensor coverage pattern is affected when luminaire is tilted.	DNATXD Textured Natural Aluminum
FAO Field adjustable output ⁹	Shipped Separately (requires some field assembly)	DWHGXD Textured White
DMG 0-10V dimming extend out back of housing for external control (control ordered separate) ⁹	EGS External glare shield ⁷	
	EGFV External glare full visor (360° around light aperture) ⁷	
	BS Bird spikes ¹⁶	



Ordering Information

Accessories

Ordered and shipped separately.

RSX1HS	RSX1 House side shield (includes 1 shield)
RSX1HSAFRR U	RSX1 House side shield for AFR rotated optics (includes 1 shield)
RSX1EGS (FINISH) U	External glare shield (specify finish)
RSX1EGFV (FINISH) U	External glare full visor (specify finish)
RSXRPA (FINISH) U	RSX Universal round pole adaptor plate (specify finish)
RSXWBA (FINISH) U	RSX WBA wall bracket (specify finish) ¹
RSXSCB (FINISH) U	RSX Surface conduit box (specify finish, for use with WBA, WBA not included)
DLL127F 1.5 JU	Photocell -SSL twist-lock (120-277V) ¹⁷
DLL347F 1.5 CUL JU	Photocell -SSL twist-lock (347V) ¹⁷
DLL480F 1.5 CUL JU	Photocell -SSL twist-lock (480V) ¹⁷
DSHORT SBK U	Shorting cap ¹⁷

NOTES

- Any Type 5 distribution, is not available with WBA.
- MVOLT driver operates on any line voltage from 120-277V (50/60 Hz).
- HVOLT driver operates on any line voltage from 347-480V (50/60 Hz).
- XVOLT driver not available with P1 or P2. XVOLT driver operates on any line voltage from 277V-480V (50/60 Hz). XVOLT not available with fusing (SF or DF) and not available with PE.
- Single fuse (SF) requires 120V, 277V or 347V. Double fuse (DF) requires 208V, 240V or 480V.
- Maximum tilt is 90° above horizontal.
- It may be ordered as an accessory.
- Requires MVOLT or 347V.
- Two or more of the following options cannot be combined including PE, DMG, PER7, FAO and NLTAIR2 PIRHN. (Exception: PE and FAO can be combined; also PE and DMG can be combined.)
- Compatible with standard twist-lock photocells for dusk to dawn operation or advanced control nodes that provide 0-10V dimming signals. Wire 4/Wire 5 wired to dimming leads on driver. Wire6/Wire7 capped inside luminaire. Twistlock photocell ordered and shipped as a separate line item from Acuity Brands Controls. See accessories. Shorting Cap included.
- For units with option PER7, the mounting must be restricted to +/- 45° from horizontal aim per ANSI C136.10-2010.
- Must be ordered with PIRHN.
- Requires MVOLT or HVOLT.
- Must be ordered with NLTAIR2. For additional information on PIRHN visit [here](#).
- CCE option not available with WBA, WBASC, AASP, AARP, AAWB, AAWBSC, EGS, EGFV and BS.
- Must be ordered with fixture for factory pre-drilling.
- Requires luminaire to be specified with PER7 option. Ordered and shipped as a separate line item from Acuity Brands Controls.

External Shields



House Side Shield



External Glare Shield

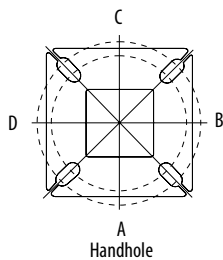


External 360 Full Visor

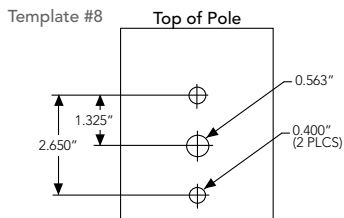
Pole/Mounting Information

Accessories including bullhorns, cross arms and other adapters are available under the accessories tab at Lithonia's Outdoor Poles and Arms product page. Click here to visit [Accessories](#).

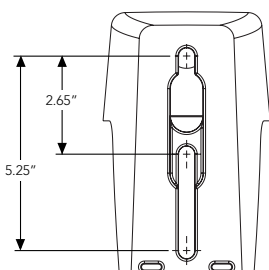
HANDHOLE ORIENTATION



RSX POLE DRILLING



RSX STANDARD ARM & ADJUSTABLE ARM



Round Tenon Mount - Pole Top Slipfitters

Tenon O.D.	RSX Mounting	Single	2 at 180°	2 at 90°	3 at 120°	3 at 90°	4 at 90°
2 - 3/8"	RPA, AARP	AS3-5 190	AS3-5 280	AS3-5 290	AS3-5 320	AS3-5 390	AS3-5 490
2 - 7/8"	RPA, AARP	AST25-190	AST25-280	AST25-290	AST25-320	AST25-390	AST25-490
4"	RPA, AARP	AST35-190	AST35-280	AST35-290	AST35-320	AST35-390	AST35-490

Drill/Side Location by Configuration Type

Drilling Template	Mounting Option	Single	2 @ 180	2 @ 90	3 @ 120	3 @ 90	4 @ 90
	Head Location	Side B	Side B & D	Side B & C	Round Pole Only	Side B, C & D	Side A, B, C & D
#8	Drill Nomenclature	DM19AS	DM28AS	DM29AS	DM32AS	DM39AS	DM49AS

RSX1 - Luminaire EPA

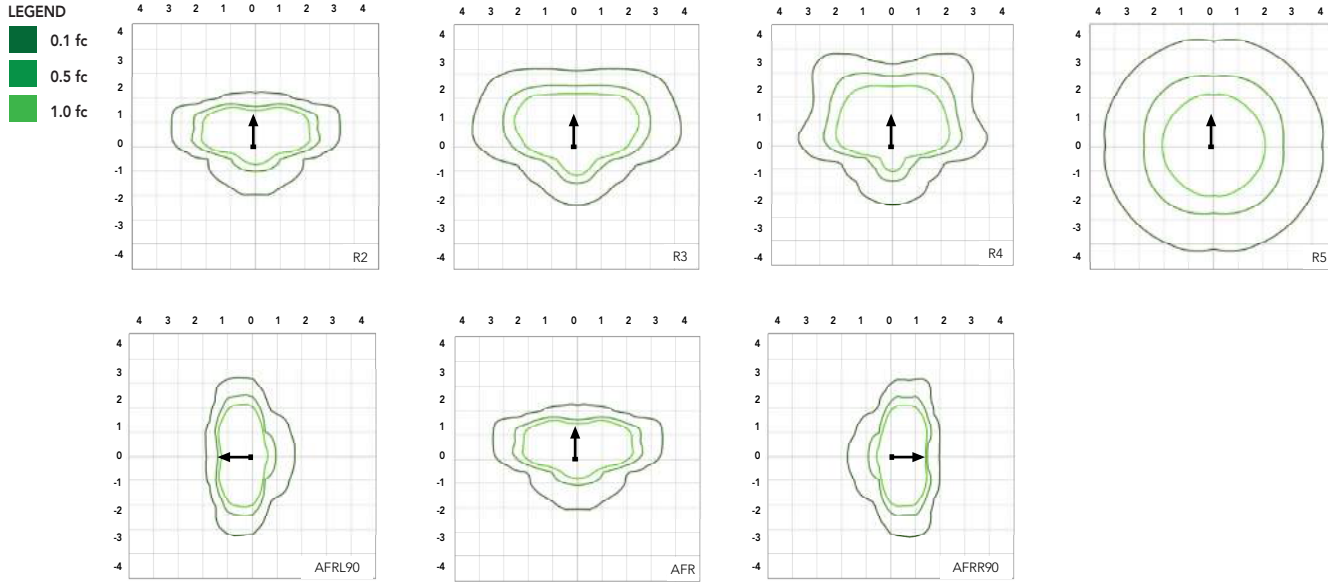
*Includes Luminaire and integral mounting arm. Other tenons, arms, brackets or other accessories are not included in this EPA data.

Fixture Quantity & Mounting Configuration	Single	2 @ 90	2 @ 180	3 @ 90	3 @ 120	4 @ 90	2 Side by Side	3 Side by Side	4 Side by Side
Mounting Type	Tilt								
SPA - Square Pole Adaptor	0°	0.57	1.03	1.05	1.52	1.36	2.03	1.31	2.26
RPA - Round Pole Adaptor		0.62	1.08	1.15	1.62	1.46	2.13	1.36	2.36
MA - Mast Arm Adaptor		0.49	0.95	0.89	1.36	1.2	1.87	1.23	2.1
IS - Integral Slipfitter AASP/AARP - Adjustable Arm Square/Round Pole	0°	0.57	1.03	1.05	1.52	1.36	2.03	1.31	2.26
	10°	0.68	1.34	1.33	2	1.74	2.64	1.35	2.71
	20°	0.87	1.71	1.73	2.56	2.26	3.42	1.75	3.49
	30°	1.24	2.19	2.3	3.21	2.87	4.36	2.49	4.97
	40°	1.81	2.68	2.98	3.85	3.68	5.30	3.62	7.24
	45°	2.11	2.92	3.44	4.2	4.08	5.77	4.22	8.44
	50°	2.31	3.17	3.72	4.52	4.44	6.26	4.62	9.25
	60°	2.71	3.66	4.38	5.21	5.15	7.24	5.43	10.86
	70°	2.78	3.98	4.54	5.67	5.47	7.91	5.52	11.03
	80°	2.76	4.18	4.62	5.97	5.76	8.31	5.51	11.03
	90°	2.73	4.25	4.64	6.11	5.91	8.47	5.45	10.97

Photometric Diagrams

To see complete photometric reports or download .ies files for this product, visit Lithonia Lighting's [RSX Area homepage](#).

Isofootcandle plots for the RSX1 LED P4 40K. Distances are in units of mounting height (20').



Performance Data

Lumen Ambient Temperature (LAT) Multipliers

Use these factors to determine relative lumen output for average ambient temperatures from 0-50°C (32-122°F).

Ambient	Ambient	Lumen Multiplier
0°C	32°F	1.05
5°C	41°F	1.04
10°C	50°F	1.03
15°C	59°F	1.02
20°C	68°F	1.01
25°C	77°F	1.00
30°C	86°F	0.99
35°C	95°F	0.98
40°C	104°F	0.97
45°C	113°F	0.96
50°C	122°F	0.95

Electrical Load

Performance Package	System Watts (W)	Current (A)					
		120V	208V	240V	277V	347V	480V
P1	51W	0.42	0.25	0.21	0.19	0.14	0.11
P2	72W	0.60	0.35	0.30	0.26	0.21	0.15
P3	109W	0.91	0.52	0.45	0.39	0.31	0.23
P4	133W	1.11	0.64	0.55	0.48	0.38	0.27

Projected LED Lumen Maintenance

Operating Hours	50,000	75,000	100,000
Lumen Maintenance Factor	>0.97	>0.95	>0.92

Values calculated according to IESNA TM-21-11 methodology and valid up to 40°C.



COMMERCIAL OUTDOOR

One Lithonia Way • Conyers, Georgia 30012 • Phone: 1-800-705-SERV (7378) • www.acuitybrands.com
© 2018-2024 Acuity Brands Lighting, Inc. All rights reserved.

Lithonia RSX1 Area LED
Rev. 10/09/24
Page 3 of 9

Lumen Output

Lumen values are from photometric tests performed in accordance with IESNA LM-79-08. Data is considered to be representative of the configurations shown, within the tolerances allowed by Lighting Facts. Contact factory for performance data on any configurations not shown here.

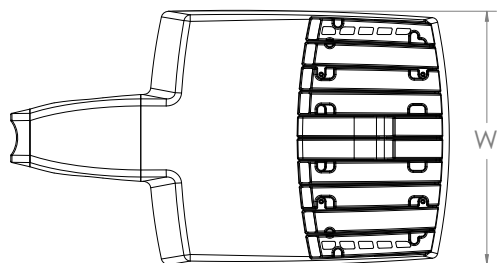
Performance Package	System Watts	Distribution Type	30K (3000K, 70 CRI)					40K (4000K, 70 CRI)					50K (5000K, 70 CRI)				
			Lumens	B	U	G	LPW	Lumens	B	U	G	LPW	Lumens	B	U	G	LPW
P1	51W	R2	6,482	1	0	1	126	7,121	1	0	1	139	7,121	1	0	1	139
		R3	6,459	1	0	2	127	7,096	1	0	2	139	7,096	1	0	2	139
		R3S	6,631	1	0	1	129	7,286	1	0	2	142	7,286	1	0	2	142
		R4	6,543	1	0	2	128	7,189	1	0	2	141	7,189	1	0	2	141
		R4S	6,313	1	0	1	124	6,936	1	0	1	136	6,936	1	0	1	136
		R5	6,631	3	0	2	130	7,286	3	0	2	143	7,286	3	0	2	143
		R5S	6,807	3	0	1	133	7,479	3	0	1	147	7,479	3	0	1	147
		AFR	6,473	1	0	1	127	7,112	1	0	1	139	7,112	1	0	1	139
		AFRR90	6,535	2	0	2	127	7,179	2	0	2	140	7,179	2	0	2	140
P2	72W	AFRL90	6,562	2	0	1	128	7,210	2	0	2	140	7,210	2	0	2	140
		R2	8,991	2	0	1	123	9,878	2	0	1	135	9,878	2	0	1	135
		R3	8,959	2	0	2	124	9,843	2	0	2	137	9,843	2	0	2	137
		R3S	9,198	2	0	2	126	10,106	2	0	2	139	10,106	2	0	2	139
		R4	9,077	2	0	2	126	9,972	2	0	2	139	9,972	2	0	2	139
		R4S	8,757	1	0	2	122	9,622	2	0	2	134	9,622	2	0	2	134
		R5	9,198	4	0	2	128	10,106	4	0	2	140	10,106	4	0	2	140
		R5S	9,443	3	0	1	131	10,374	3	0	1	144	10,374	3	0	1	144
		AFR	8,979	2	0	1	125	9,865	2	0	1	137	9,865	2	0	1	137
P3	109W	AFRR90	9,064	3	0	2	124	9,959	3	0	2	137	9,959	3	0	2	137
		AFRL90	9,102	3	0	2	125	10,001	3	0	2	137	10,001	3	0	2	137
		R2	12,808	2	0	1	117	14,072	2	0	2	129	14,072	2	0	2	129
		R3	12,763	2	0	2	117	14,023	2	0	2	129	14,023	2	0	2	129
		R3S	13,104	2	0	2	120	14,397	2	0	2	132	14,397	2	0	2	132
		R4	12,930	2	0	2	119	14,206	2	0	2	130	14,206	2	0	2	130
		R4S	12,475	2	0	2	114	13,707	2	0	2	126	13,707	2	0	2	126
		R5	13,104	4	0	2	120	14,397	4	0	2	132	14,397	4	0	2	132
		R5S	13,452	3	0	2	123	14,779	3	0	2	136	14,779	3	0	2	136
P4	133W	AFR	12,791	2	0	1	117	14,053	2	0	2	129	14,053	2	0	2	129
		AFRR90	12,913	3	0	3	118	14,187	3	0	3	130	14,187	3	0	3	130
		AFRL90	12,967	3	0	2	118	14,247	3	0	3	130	14,247	3	0	3	130
		R2	14,943	2	0	2	112	16,417	2	0	2	123	16,417	2	0	2	123
		R3	14,890	2	0	3	112	16,360	2	0	3	123	16,360	2	0	3	123
		R3S	15,287	2	0	2	115	16,796	2	0	2	126	16,796	2	0	2	126
		R4	15,085	2	0	3	113	16,574	2	0	3	125	16,574	2	0	3	125
		R4S	14,554	2	0	2	109	15,991	2	0	2	120	15,991	2	0	2	120
		R5	15,287	4	0	2	115	16,796	4	0	2	126	16,796	4	0	2	126
		R5S	15,693	4	0	2	118	17,242	4	0	2	130	17,242	4	0	2	130
		AFR	14,923	2	0	2	112	16,395	2	0	2	123	16,395	2	0	2	123
		AFRR90	15,065	3	0	3	113	16,551	3	0	3	124	16,551	3	0	3	124
		AFRL90	15,128	3	0	3	114	16,621	3	0	3	125	16,621	3	0	3	125

Dimensions & Weights

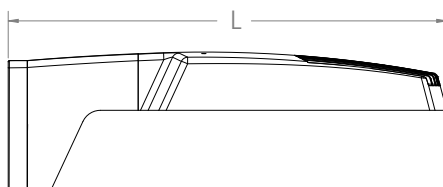
Luminaire Weight by Mounting Type

Mounting Configuration	Total Luminaire Weight
SPA	22 lbs
RPA	24 lbs
MA	22 lbs
WBA	25 lbs
WBASC	28 lbs
IS	25 lbs
AASP	25 lbs
AARP	27 lbs
AAWB	28 lbs
AAWSC	31 lbs

RSX1 with Round Pole Adapter (RPA)



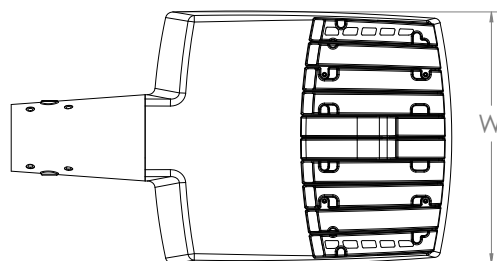
Length: 22.8" (57.9 cm)
 Width: 13.3" (33.8 cm)
 Height: 3.0" (7.6 cm) Main Body
 7.2" (18.4 cm) Arm



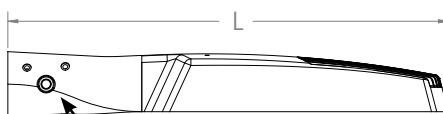
Note: RPA — Round Pole mount can also be used to mount on square poles by omitting the round pole adapter plate shown here.



RSX1 with Mast Arm Adapter (MA)

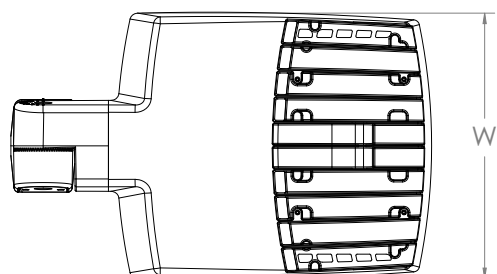


Length: 23.2" (59.1 cm)
 Width: 13.3" (33.8 cm)
 Height: 3.0" (7.6 cm) Main Body
 3.5" (8.9 cm) Arm

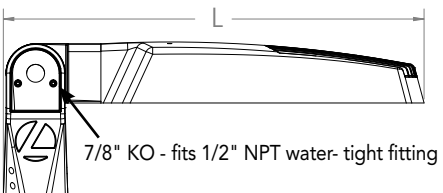


7/16" locking thru bolt/nut provided

RSX1 with Adjustable Slipfitter (IS)



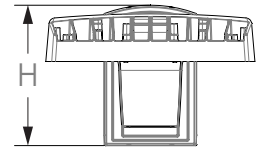
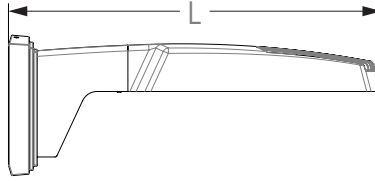
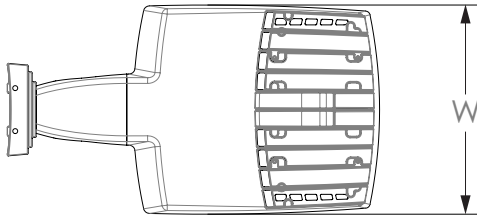
Length: 20.7" (52.7 cm)
 Width: 13.3" (33.8 cm)
 Height: 3.0" (7.6 cm) Main Body
 7.6" (19.3 cm) Arm



7/8" KO - fits 1/2" NPT water-tight fitting

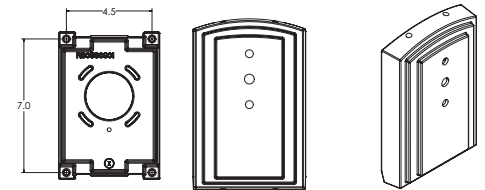
Dimensions

RSX1 with Wall Bracket (WBA)

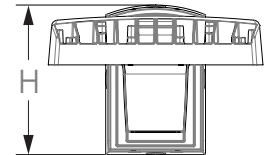
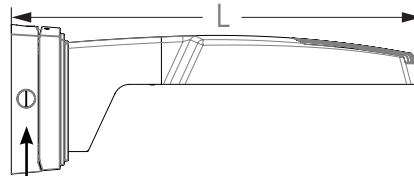
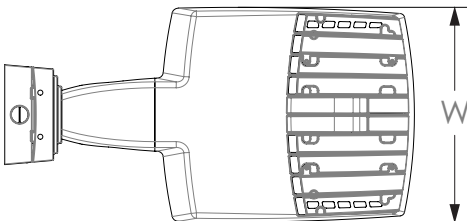


Length: 23.6" (59.9 cm)
 Width: 13.3" (33.8 cm)
 Height: 3.0" (7.6 cm) Main Body
 8.9" (22.6 cm) Arm

Wall Bracket (WBA) Mounting Detail



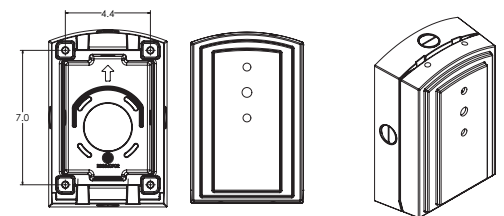
RSX1 with Wall Bracket with Surface Conduit Box (WBASC)



3/4" NPT taps with plugs - Qty (4) provided

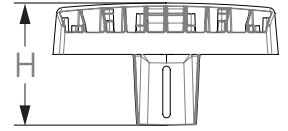
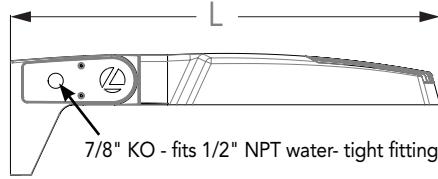
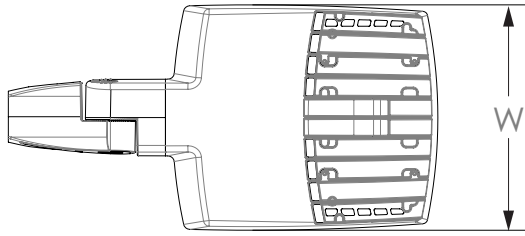
Length: 25.3" (64.3 cm)
 Width: 13.3" (33.8 cm)
 Height: 3.0" (7.6 cm) Main Body
 9.2" (23.4 cm) Arm

Surface Conduit Box (SCB) Mounting Detail



Dimensions

RSX1 with Adjustable Tilt Arm - Square or Round Pole (AASP or AARP)



Length: 25.3" (65.3 cm) **AASP**
 26.3" (66.8 cm) **AARP**
 Width: 13.3" (33.8 cm)
 Height: 3.0" (7.6 cm) Main Body
 7.2" (18.2 cm) Arm



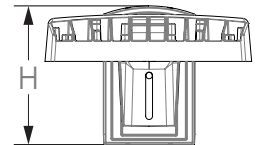
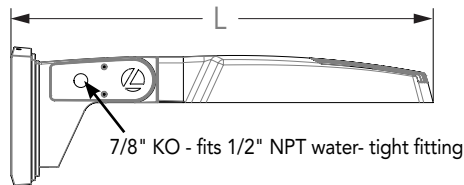
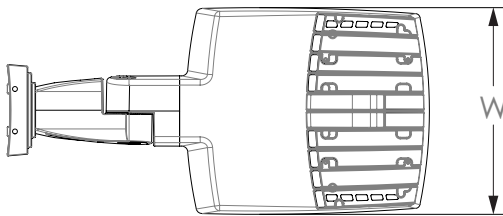
NOTE:
 RPA - Round Pole mount can also be used to mount on square poles by omitting the round pole adapter plate shown here.

Notes

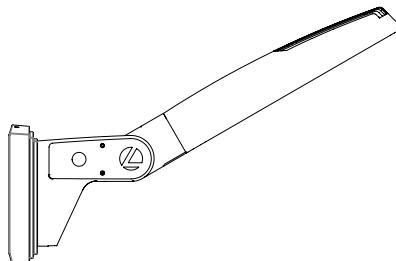
AASP: Requires 3.0" min. square pole for 1 at 90°. Requires 3.5" min. square pole for mounting 2, 3, 4 at 90°.

AARP: Requires 3.2" min. dia. round pole for 2, 3, 4 at 90°. Requires 3.0" min. dia. round pole for mounting 1 at 90°, 2 at 180°, 3 at 120°.

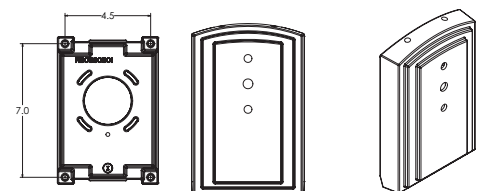
RSX1 with Adjustable Tilt Arm with Wall Bracket (AAWB)



Length: 27.1" (68.8 cm)
 Width: 13.3" (33.8 cm)
 Height: 3.0" (7.6 cm) Main Body
 8.9" (22.6 cm) Arm

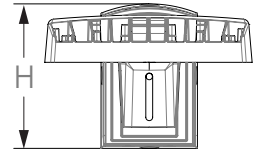
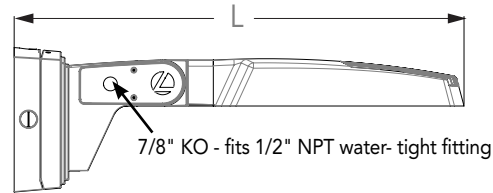
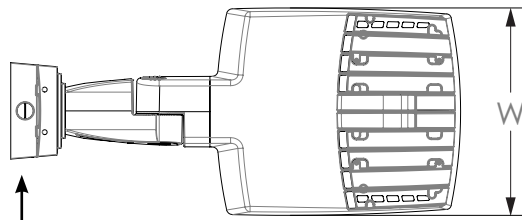


Wall Bracket (WBA) Mounting Detail



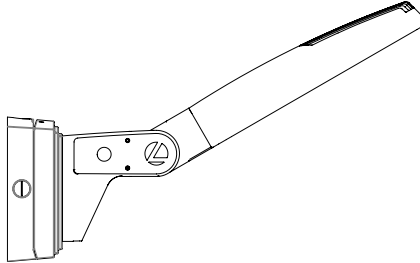
Dimensions

RSX1 with Adjustable Tilt Arm with Wall Bracket and Surface Conduit Box (AAWSC)

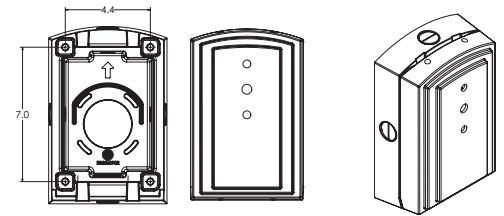


3/4" NPT taps
with plugs - Qty (4)
provided

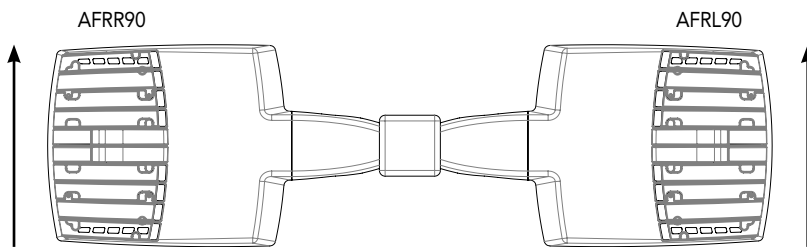
Length: 28.8" (73.2 cm)
Width: 13.3" (33.8 cm)
Height: 3.0" (7.6 cm) Main Body
9.2" (23.4 cm) Arm



Surface Conduit Box (SCB) Mounting Detail



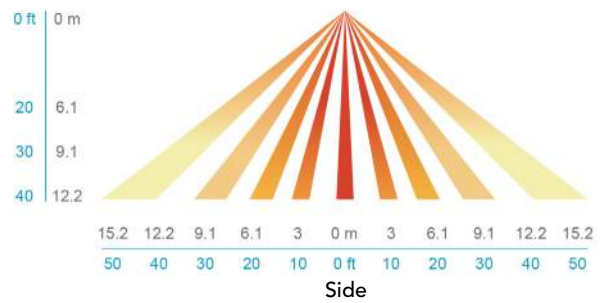
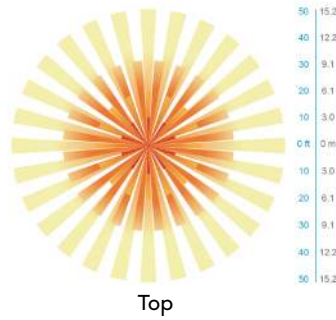
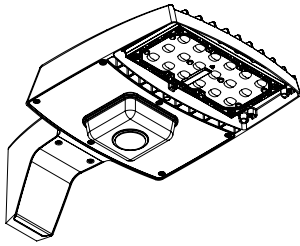
Automotive Front Row - Rotated Optics (AFRL90/R90)



(Example: 2@180 - arrows indicate direction of light exiting the luminaire)

nLight Sensor Coverage Pattern

NLTAIR2 PIRHN



Motion Sensor Default Settings - Option PIRHN						
Option	Dimmed State (unoccupied)	High Level (when occupied)	Photocell Operation	Dwell Time (occupancy time delay)	Ramp-up Time (from unoccupied to occupied)	Ramp-down Time (from occupied to unoccupied)
NLTAIR2 PIRHN	Approx. 30% Output	100% Output	Enabled @ 1.5FC	7.5 minutes	3 seconds	5 minutes

*Note: NLTAIR2 PIRHN default settings including photocell set-point, high/low dim rates, and occupancy sensor time delay are all configurable using the Clairity Pro App. Sensor coverage pattern shown with luminaire at 0°. Sensor coverage pattern is affected when luminaire is tilted.

FEATURES & SPECIFICATIONS

INTENDED USE

The RSX LED area luminaire is designed to provide a long-lasting, energy-efficient solution for the one-for-one replacement of existing metal halide or high pressure sodium lighting. The RSX1 delivers 7,000 to 17,000 lumens and is ideal for replacing 70W to 400W HID pole-mounted luminaires in parking lots and other area lighting applications.

CONSTRUCTION

The RSX LED area luminaire features a rugged die-cast aluminum main body that uses heat-dissipating fins and flow-through venting to provide optimal thermal management that both enhances LED performance and extends component life. Integral "no drill" mounting arm allows the luminaire to be mounted on existing pole drillings, greatly reducing installation labor. The light engines and housing are sealed against moisture and environmental contaminants to IP66. The low-profile design results in a low EPA, allowing pole optimization. All mountings are rated for minimum 1.5 G vibration load per ANSI C136.31. 3G Mountings: Include SPA, RPA, MA, IS, AASP, and AARP rated for 3G vibration. 1.5G Mountings: Include WBA, WBASC, AAWB and AAWSC rated for 1.5G vibration.

FINISH

Exterior parts are protected by a zinc-infused Super Durable TGIC thermoset powder coat finish that provides superior resistance to corrosion and weathering. A tightly controlled multi-stage process ensures superior adhesion as well as a minimum finish thickness of 3 mils. The result is a high-quality finish that is warrantied not to crack or peel.

COASTAL CONSTRUCTION (CCE)

Optional corrosion-resistant construction is engineered with added corrosion protection in materials and/or pre-treatment of base material under super durable paint. Provides additional corrosion protection for applications near coastal areas. Finish is salt spray tested to over 5,000 hours per ASTM B117 with scribe rating of 10. Additional lead times apply.

OPTICS

Precision acrylic refractive lenses are engineered for superior application efficiency, distributing the light to where it is needed most. Available in short and wide pattern distributions including Type 2, Type 3, Type 3S, Type 4, Type 4S, Type 5, Type 5S, AFR (Automotive Front Row), and AFR rotated AFR90 and ARFL90.

ELECTRICAL

Light engine(s) configurations consist of high-efficacy LEDs mounted on metal-core circuit boards and aluminum heat sinks to maximize heat dissipation. Light engines are IP66 rated. LED lumen maintenance is >L92/100,000 hours. CCT's of 3000K, 4000K and 5000K (minimum 70 CRI) are available. Fixtures ship standard with 0-10v dimming driver. Class 1 electronic drivers ensure system power factor >90% and THD <20%. Easily serviceable 10kV surge protection device meets a minimum Category C Low operation (per ANSI/IEEE C62.41.2).

STANDARD CONTROLS

The RSX LED area luminaire has a wide assortment of control options. Dusk to dawn controls include MVOLT and 347V button-type photocells and NEMA twist-lock photocell receptacles.

nLIGHT AIR CONTROLS

The RSX LED area luminaire is also available with nLight® AIR for the ultimate in wireless control. This powerful controls platform provides out-of-the-box basic motion sensing with photocontrol functionality and is suitable for mounting heights up to 40 feet. No commissioning is required when using factory default settings that provide basic stand-alone motion occupancy dimming that is switched on and off with a built-in photocell. See chart above for motion sensor default out-of-box settings. For more advanced wireless functionality, such as group dimming, nLight AIR can be commissioned using a smartphone and the easy-to-use CLAIRITY app. nLight AIR equipped luminaires can be grouped, resulting in motion sensor and photocell group response without the need for additional equipment. Scheduled dimming with motion sensor over-ride can be achieved when used with the nLight Eclipse. Additional information about nLight Air can be found [here](#).

INSTALLATION

Integral "no-drill" mounting arm allows for fast, easy mounting using existing pole drillings. Select the "SPA" option for square poles and the "RPA" option to mount to round poles. Note, the RPA mount can also be used for mounting to square poles by omitting the RPA adapter plate. Select the "MA" option to attach the luminaire to a 2 3/8" horizontal mast arm or the "IS" option for an adjustable slipfitter that mounts on a 2 3/8" OD tenon. The adjustable slipfitter has an integral junction box and offers easy installation. Can be tilted up to 90° above horizontal. Additional mountings are available including a wall bracket, adjustable tilt arm for direct-to-pole and wall and a surface conduit box for wall mount applications.

LISTINGS

CSA Certified to meet U.S. and Canadian standards. Suitable for wet locations. Rated for -40°C minimum ambient. DesignLights Consortium® (DLC) Premium qualified product and DLC qualified product. Not all versions of this product may be DLC Premium qualified or DLC qualified. Please check the DLC Qualified Products List at www.designlights.org/QPL to confirm which versions are qualified.

International Dark-Sky Association (IDA) Fixture Seal of Approval (FSA) is available for all products on this page utilizing 3000K color temperature only. U.S. Patent No. D882, 146S

GOVERNMENT PROCUREMENT

BAA – Buy America(n) Act: Product with the BAA option qualifies as a domestic end product under the Buy American Act as implemented in the FAR and DFARS. Product with the BAA option also qualifies as manufactured in the United States under DOT Buy America regulations. BABA – Build America Buy America: Product with the BAA option also qualifies as produced in the United States under the definitions of the Build America, Buy America Act. Please refer to www.acuitybrands.com/buy-american for additional information.

WARRANTY

5-year limited warranty. This is the only warranty provided and no other statements in this specification sheet create any warranty of any kind. All other express and implied warranties are disclaimed. Complete warranty terms located at:

www.acuitybrands.com/support/warranty/terms-and-conditions

Note: Actual performance may differ as a result of end-user environment and application. All values are design or typical values, measured under laboratory conditions at 25 °C. Specifications subject to change without notice.



WDGE2 LED

Architectural Wall Sconce

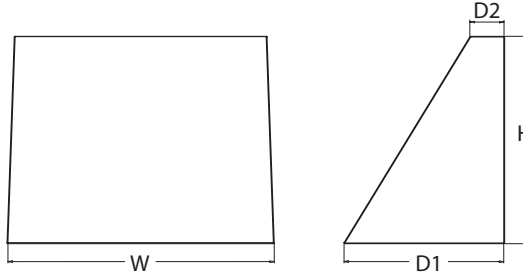
Visual Comfort Optic



D

Specifications

Depth (D1): 7"
Depth (D2): 1.5"
Height: 9"
Width: 11.5"
Weight: 13.5 lbs
(without options)



Introduction

The WDGE LED family is designed to meet specifier's every wall-mounted lighting need in a widely accepted shape that blends with any architecture. The clean rectilinear design comes in four sizes with lumen packages ranging from 1,200 to 25,000 lumens, providing a true site-wide solution. Embedded with nLight® AIR wireless controls, the WDGE family provides additional energy savings and code compliance.

WDGE2 delivers up to 6,000 lumens with a soft, non-pixelated light source, creating a visually comfortable environment. When combined with multiple integrated emergency battery backup options, including an 18W cold temperature option, the WDGE2 becomes the ideal wall-mounted lighting solution for pedestrian scale applications in any environment.



Items marked by a shaded background qualify for the Design Select program and ship in 15 days or less. To learn more about Design Select, visit www.acuitybrands.com/designselect.
*See ordering tree for details

WDGE LED Family Overview

Luminaire	Optics	Standard EM, 0°C	Cold EM, -20°C	Sensor	Approximate Lumens (4000K, 80CRI)						
					P0	P1	P2	P3	P4	P5	P6
WDGE1 LED	Visual Comfort	4W		--	750	1,200	2,000	--	--	--	--
WDGE2 LED	Visual Comfort	10W	18W	Standalone / nLight	--	1,200	2,000	3,000	4,500	6,000	--
WDGE2 LED	Precision Refractive	10W	18W	Standalone / nLight	700	1,200	2,000	3,200	4,200	--	--
WDGE3 LED	Precision Refractive	15W	18W	Standalone / nLight	6,000	7,500	8,500	10,000	12,000	--	--
WDGE4 LED	Precision Refractive			Standalone / nLight	--	12,000	16,000	18,000	20,000	22,000	25,000

Ordering Information

EXAMPLE: WDGE2 LED P3 40K 80CRI VF MVOLT SRM DDBXD

Series	Package		Color Temperature		CRI	Distribution		Voltage	Mounting	
WDGE2 LED	P1 ¹	P1SW	27K	2700K	80CRI	VF	Visual comfort forward throw	MVOLT	SRM	Surface mounting bracket
	P2 ¹	P2SW	30K	3000K	90CRI	VW	Visual comfort wide	347 ³	ICW	Indirect Canopy/Ceiling Washer bracket (dry/damp locations only) ⁴
	P3 ¹	P3SW	35K	3500K				480 ³		
	P4 ¹	Door with small window (SW) is required to accommodate sensors. See page 2 for more details.		40K	4000K					
	P5 ¹		50K ²	5000K						
										Shipped separately
										AWS 3/8inch Architectural wall spacer ⁵
										PBBW Surface-mounted back box (top, left, right conduit entry). Use when there is no junction box available. ⁵

Options				
E4WH	Emergency battery backup, Certified in CA Title 20 MAEDBS (4W, 0°C min)		Standalone Sensors/Controls (only available with P1SW, P2SW & P3SW)	
E10WH	Emergency battery backup, Certified in CA Title 20 MAEDBS (10W, 5°C min)		PIR	Bi-level (100/35%) motion sensor for 8-15' mounting heights. Intended for use on switched circuits with external dusk to dawn switching.
E20WC	Emergency battery backup, Certified in CA Title 20 MAEDBS (18W, -20°C min)		PIRH	Bi-level (100/35%) motion sensor for 15-30' mounting heights. Intended for use on switched circuits with external dusk to dawn switching
PE	Photocell, Button Type ⁶		PIR1FC3V	Bi-level (100/35%) motion sensor for 8-15' mounting heights with photocell pre-programmed for dusk to dawn operation.
DS	Dual switching (comes with 2 drivers and 2 light engines; see page 3 for details) ⁷		PIRH1FC3V	Bi-level (100/35%) motion sensor for 15-30' mounting heights with photocell pre-programmed for dusk to dawn operation.
DMG	0-10V dimming wires pulled outside fixture (for use with an external control, ordered separately) ⁸		Networked Sensors/Controls (only available with P1SW, P2SW & P3SW)	
BCE	Bottom conduit entry for back box (PBBW). Total of 4 entry points.		NLTAIR2 PIR	Embedded wireless controls by nLight with Passive Infrared Occ sensor and on/off photocell for 8-15' mounting heights.
DSLE	Dual Switching (1 Driver, 2 Light Engines)		NLTAIR2 PIRH	Embedded wireless controls by nLight with Passive Infrared Occ sensor and on/off photocell for 15-30' mounting heights.
CCE	Coastal Construction ⁵		NLTAIREM2 PIR	Embedded wireless controls by nLight with UL924 listed emergency operation, Passive Infrared Occ sensor and on/off photocell for 8-15' mounting heights ⁹
			NLTAIREM2 PIRH	Embedded wireless controls by nLight with UL924 listed emergency operation, Passive Infrared Occ sensor and on/off photocell for 15-30' mounting heights ⁹
			See page 4 for out of box functionality	
			DDBXD	Dark bronze
			DBLXD	Black
			DNAXD	Natural aluminum
			DWHXD	White
			DSSXD	Sandstone
			DDBTXD	Textured dark bronze
			DBL BXD	Textured black
			DNATXD	Textured natural aluminum
			DWHGXD	Textured white
			DSSTXD	Textured sandstone



COMMERCIAL OUTDOOR

One Lithonia Way • Conyers, Georgia 30012 • Phone: 1-800-705-SERV (7378) • www.lithonia.com
© 2019-2024 Acuity Brands Lighting, Inc. All rights reserved.

WDGE2 LED
Rev. 08/08/24

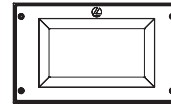
Accessories

Ordered and shipped separately.

WDGEAWS DDBXD	WDGE 3/8inch Architectural Wall Spacer (specify finish)
WDGE2PBBW DDBXD U	WDGE2 surface-mounted back box (specify finish)

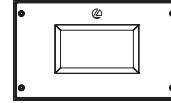
NOTES

- 1 P1-P5 not available with sensors/controls. Sensors/controls only available with P1SW, P2SW and P3SW.
- 2 50K not available in 90CRI.
- 3 347V and 480V not available with E4WH, E10WH, E20WC, DS or DSLE.
- 4 Not qualified for DLC. Not available with emergency battery backup or sensors/controls.
- 5 For PBBW and AWS with CCE option, require an RFA.
- 6 PE not available in 480V or with sensors/controls.
- 7 DS option not available with E4WH, E10WH, E20WC or sensors/controls.
- 8 DMG option not available with sensors/controls.
- 9 Available with MVOLT only and only rated to 25C ambient.



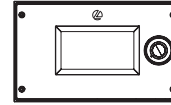
Default configuration with no sensors/controls.

Power Packages: P1, P2, P3, P4, P5



Small Window (SW) configuration

Power Packages: P1SW, P2SW, P3SW



Configuration with sensors/controls

Power Packages: P1SW, P2SW, P3SW

Performance Data

Lumen Output

Lumen values are from photometric tests performed in accordance with IESNA LM-79-08. Data is considered to be representative of the configurations shown, within the tolerances allowed by Lighting Facts. Contact factory for performance data on any configurations not shown here.

Performance Package	System Watts	Dist. Type	27K (2700K, 80 CRI)					30K (3000K, 80 CRI)					35K (3500K, 80 CRI)					40K (4000K, 80 CRI)					50K (5000K, 80 CRI)				
			Lumens	LPW	B	U	G	Lumens	LPW	B	U	G	Lumens	LPW	B	U	G	Lumens	LPW	B	U	G	Lumens	LPW	B	U	G
P1 / P1SW	10W	VF	1,166	119	0	0	0	1,209	123	0	0	0	1,251	128	0	0	0	1,256	128	0	0	0	1,254	128	0	0	0
		VW	1,197	122	0	0	0	1,241	126	0	0	0	1,284	131	0	0	0	1,289	131	0	0	0	1,286	131	0	0	0
P2 / P2SW	15W	VF	1,878	129	1	0	0	1,947	134	1	0	0	2,015	139	1	0	0	2,023	139	1	0	0	2,019	139	1	0	0
		VW	1,927	133	1	0	0	1,997	137	1	0	0	2,067	142	1	0	0	2,075	143	1	0	0	2,071	143	1	0	0
P3 / P3SW	23W	VF	2,908	129	1	0	0	3,015	134	1	0	0	3,119	138	1	0	0	3,132	139	1	0	0	3,126	139	1	0	0
		VW	2,983	132	1	0	0	3,093	137	1	0	0	3,200	142	1	0	0	3,213	143	1	0	0	3,206	142	1	0	0
P4	35W	VF	4,096	117	1	0	1	4,247	121	1	0	1	4,394	126	1	0	1	4,412	126	1	0	1	4,403	126	1	0	1
		VW	4,202	120	1	0	0	4,357	125	1	0	1	4,508	129	1	0	1	4,526	129	1	0	1	4,517	129	1	0	1
P5	48W	VF	5,567	115	1	0	1	5,772	119	1	0	1	5,972	123	1	0	1	5,996	124	1	0	1	5,984	124	1	0	1
		VW	5,711	118	1	0	1	5,921	122	1	0	1	6,127	126	1	0	1	6,151	127	1	0	1	6,139	127	1	0	1

Electrical Load

Performance Package	System Watts	Current (A)					
		120V	208V	240V	277V	347V	480V
P1 / P1SW	10W	0.082	0.049	0.043	0.038	--	--
	13W	--	--	--	--	0.046	0.033
P2 / P2SW	15W	0.132	0.081	0.072	0.064	--	--
	18W	--	--	--	--	0.056	0.041
P3 / P3SW	23W	0.195	0.114	0.100	0.088	--	--
	26W	--	--	--	--	0.079	0.058
P4	35W	0.302	0.175	0.152	0.134	--	--
	38W	--	--	--	--	0.115	0.086
P5	48W	0.434	0.241	0.211	0.184	--	--
	52W	--	--	--	--	0.157	0.119

Lumen Multiplier for 90CRI

CCT	Multiplier
27K	0.845
30K	0.867
35K	0.845
40K	0.885
50K	0.898

Lumen Output in Emergency Mode (4000K, 80 CRI)

Option	Dist. Type	Lumens
E4WH	VF	646
	VW	647
E10WH	VF	1,658
	VW	1,701
E20WC	VF	2,840
	VW	2,913

Lumen Ambient Temperature (LAT) Multipliers

Use these factors to determine relative lumen output for average ambient temperatures from 0-40°C (32-104°F).

Ambient		Lumen Multiplier
0°C	32°F	1.03
10°C	50°F	1.02
20°C	68°F	1.01
25°C	77°F	1.00
30°C	86°F	0.99
40°C	104°F	0.98

Projected LED Lumen Maintenance

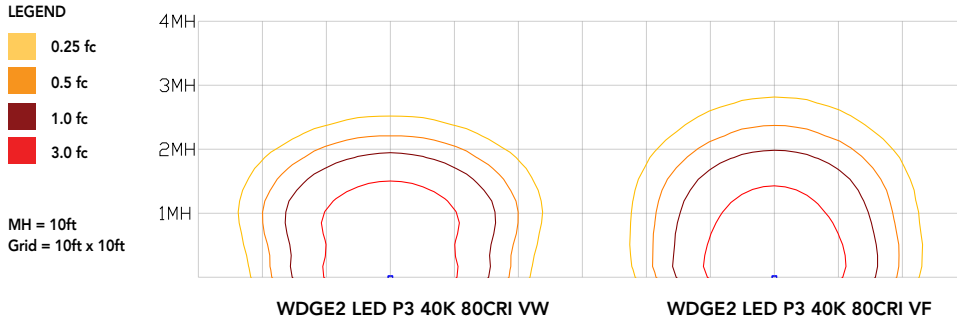
Data references the extrapolated performance projections for the platforms noted in a 25°C ambient, based on 10,000 hours of LED testing (tested per IESNA LM-80-08 and projected per IESNA TM-21-11).

To calculate LLF, use the lumen maintenance factor that corresponds to the desired number of operating hours below. For other lumen maintenance values, contact factory.

Operating Hours	0	25,000	50,000	100,000
Lumen Maintenance Factor	1.0	>0.96	>0.95	>0.91

Photometric Diagrams

To see complete photometric reports or download .ies files for this product, visit the Lithonia Lighting WDGE LED homepage.
Tested in accordance with IESNA LM-79 and LM-80 standards.



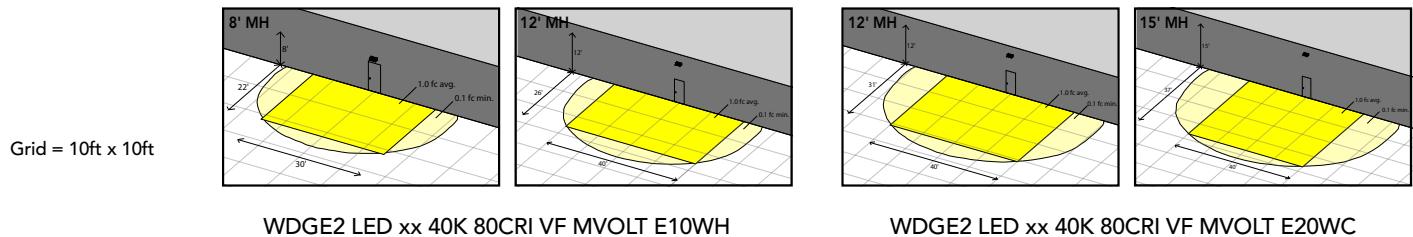
Emergency Egress Options

Emergency Battery Backup

The emergency battery backup is integral to the luminaire — no external housing required! This design provides reliable emergency operation while maintaining the aesthetics of the product. All emergency battery backup configurations include an independent secondary driver with an integral relay to immediately detect loss of normal power and automatically energize the luminaire. The emergency battery will power the luminaire for a minimum duration of 90 minutes (maximum duration of three hours) from the time normal power is lost and maintain a minimum of 60% of the light output at the end of 90 minutes.

Applicable codes: NFPA 70/NEC – section 700.16, NFPA 101 Life Safety Code Section 7.9

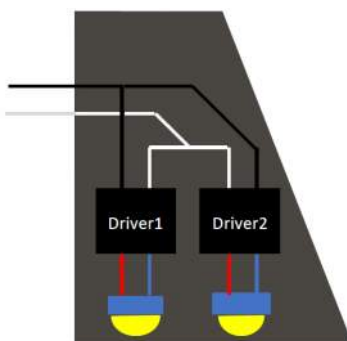
The examples below show illuminance of 1 fc average and 0.1 fc minimum in emergency mode with E10WH or E20WC and VF distribution.



Dual Switching (DS) Option

The dual switching option offers operational redundancy that certain codes require. With this option the luminaire comes integrated with two drivers and two light engines. These work completely independent to each other so that a failure of any individual component does not cause the whole luminaire to go dark.

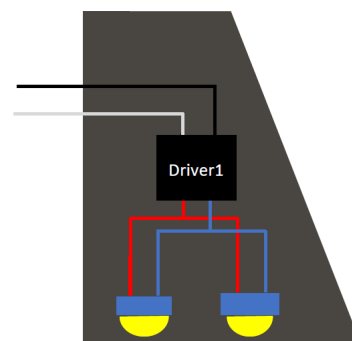
Applicable codes: NFPA 70/NEC – section 700.16, NFPA 101 Life Safety Code Section 7.9



Dual Switching Light Engine (DSLE) Option

The dual switching option offers operational redundancy that certain codes require. With this option the luminaire comes integrated with one driver and two light engines. These work completely independent to each other so that a failure of either light engine does not cause the whole luminaire to go dark.

Applicable codes: NFPA 70/NEC – section 700.16, NFPA 101 Life Safety Code Section 7.9



Motion/Ambient Sensor (PIR, PIRH)

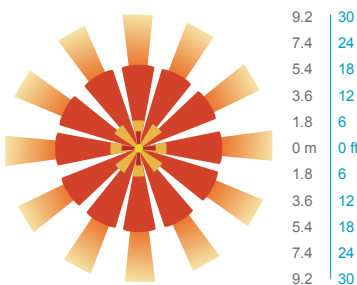
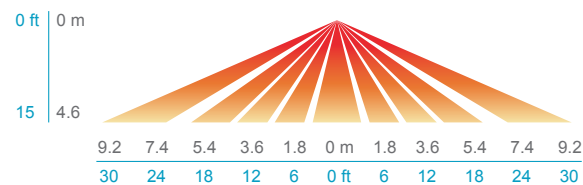
Motion/Ambient sensor (Sensor Switch MSOD) is integrated into the the luminaire. The sensor provides both Motion and Daylight based dimming of the luminaire. For motion detection, the sensor utilizes 100% Digital Passive Infrared (PIR) technology that is tuned for walking size motion while preventing false tripping from the environment. The integrated photocell enables additional energy savings during daytime periods when there is sufficient daylight. Optimize sensor coverage by either selecting PIR or PIRH option. PIR option comes with a sensor lens that is optimized to provide maximum coverage for mounting heights between 8-15ft, while PIRH is optimized for 15-40ft mounting height.

Networked Control (NLTAIR2)

nLight® AIR is a wireless lighting controls platform that allows for seamless integration of both indoor and outdoor luminaires. Five-tier security architecture, 900 MHz wireless communication and app (CLAIRITY™ Pro) based configurability combined together make nLight® AIR a secure, reliable and easy to use platform.

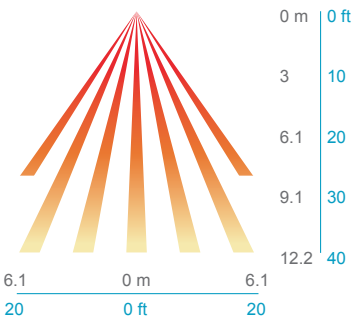
PIR

HIGH VIEW

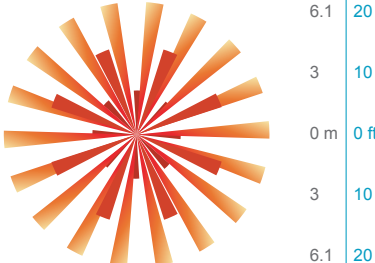


PIRH

SIDE VIEW



TOP VIEW



Option	Dim Level	High Level (when triggered)	Photocell Operation	Motion Time Delay	Ramp-down Time	Ramp-up Time
PIR or PIRH	Motion - 3V (37% of full output) Photocell - 0V (turned off)	10V (100% output)	Enabled @ 5fc	5 min	5 min	Motion - 3 sec Photocell - 45 sec
PIR1FC3V, PIRH1FC3V	Motion - 3V (37% of full output) Photocell - 0V (turned off)	10V (100% output)	Enabled @ 1fc	5 min	5 min	Motion - 3 sec Photocell - 45 sec
NLTAIR2 PIR, NLTAIR2 PIRH (out of box)	Motion - 3V (37% of full output) Photocell - 0V (turned off)	10V (100% output)	Enabled @ 5fc	7.5 min	5 min	Motion - 3 sec Photocell - 45 sec

UL 924 Response – nLight AIR Devices with EM Option

- NLTAIREM2 devices will remain at their high-end trim and ignore wireless lighting control commands, unless a normal-power-sensed (NPS) broadcast is received at least every 8 seconds.
- Using the CLAIRITY+ mobile app, NLTAIREM2 devices must be associated with a group that includes a normal power sensing device to receive NPS broadcasts.
- The non-emergency devices, NLTAIR2 PIR and NLTAIR2 PIRH, with version 3.4 or later firmware can be used for normal power sensing.



**NLTAIR2 PIR – nLight AIR
Motion/Ambient Sensor**

D = 7"

H = 11"

W = 11.5"



PBBW – Surface-Mounted Back Box
Use when there is no junction box available.

D = 1.75"

H = 9"

W = 11.5"



AWS – 3/8inch Architectural Wall Spacer

D = 0.38"

H = 4.4"

W = 7.5"

FEATURES & SPECIFICATIONS

INTENDED USE

Common architectural look, with clean rectilinear shape, of the WDGE LED was designed to blend with any type of construction, whether it be tilt-up, frame or brick. Applications include commercial offices, warehouses, hospitals, schools, malls, restaurants, and other commercial buildings.

CONSTRUCTION

The single-piece die-cast aluminum housing integrates secondary heat sinks to optimize thermal transfer from the internal light engine heat sinks and promote long life. The driver is mounted in direct contact with the casting for a low operating temperature and long life. The die-cast door frame is fully gasketed with a one-piece solid silicone gasket to keep out moisture and dust, providing an IP66 rating for the luminaire.

FINISH

Exterior painted parts are protected by a zinc-infused Super Durable TGIC thermoset powder coat finish that provides superior resistance to corrosion and weathering. A tightly controlled multi-stage process ensures a 3 mils thickness for a finish that can withstand extreme climate changes without cracking or peeling. Standard Super Durable colors include dark bronze, black, natural aluminum, sandstone and white. Available in textured and non-textured finishes.

OPTICS

Well crafted reflector optics allow the light engine to be recessed within the luminaire, providing visual comfort, superior distribution, uniformity, and spacing in wall-mount applications. The WDGE LED has zero uplight and qualifies as a Nighttime Friendly™ product, meaning it is consistent with the LEED® and Green Globes™ criteria for eliminating wasteful uplight.

ELECTRICAL

Light engine consists of high-efficacy LEDs mounted to metal-core circuit boards to maximize heat dissipation and promote long life (up to L91/100,000 hours at 25°C). The electronic driver has a power factor of >90%, THD <20%. Luminaire comes with built in 6kV surge protection, which meets a minimum Category C low exposure (per ANSI/IEEE C62.41.2). Fixture ships standard with 0-10v dimmable driver.

INSTALLATION

A universal mounting plate with integral mounting support arms allows the fixture to hinge down for easy access while making wiring connections. The 3/8" Architectural Wall Spacer (AWS) can be used to create a floating appearance or to accommodate small imperfections in the wall surface. The ICW option can be used to mount the luminaire inverted for indirect lighting in dry and damp locations. Design can withstand up to a 1.5 G vibration load rating per ANSI C136.31.

LISTINGS

CSA certified to U.S. and Canadian standards. Luminaire is IP66 rated. PIR options are rated for wet location. Rated for -40°C minimum ambient. DesignLights Consortium® (DLC) Premium qualified product and DLC qualified product. Not all versions of this product may be DLC Premium qualified or DLC qualified. Please check the DLC Qualified Products List at www.designlights.org/QPL to confirm which versions are qualified. International Dark-Sky Association (IDA) Fixture Seal of Approval (FSA) is available for all products on this page utilizing 2700K and 3000K color temperature only and SRM mounting only.

GOVERNMENT PROCUREMENT

BABA – Build America Buy America: Product qualifies as produced in the United States under the definitions of the Build America, Buy America Act. Please refer to www.acuitybrands.com/buy-american for additional information.

WARRANTY

5-year limited warranty. This is the only warranty provided and no other statements in this specification sheet create any warranty of any kind. All other express and implied warranties are disclaimed. Complete warranty terms located at: www.acuitybrands.com/support/warranty/terms-and-conditions

Note: Actual performance may differ as a result of end-user environment and application. All values are design or typical values, measured under laboratory conditions at 25 °C. Specifications subject to change without notice.