

# SCHOOL DISTRICT 49

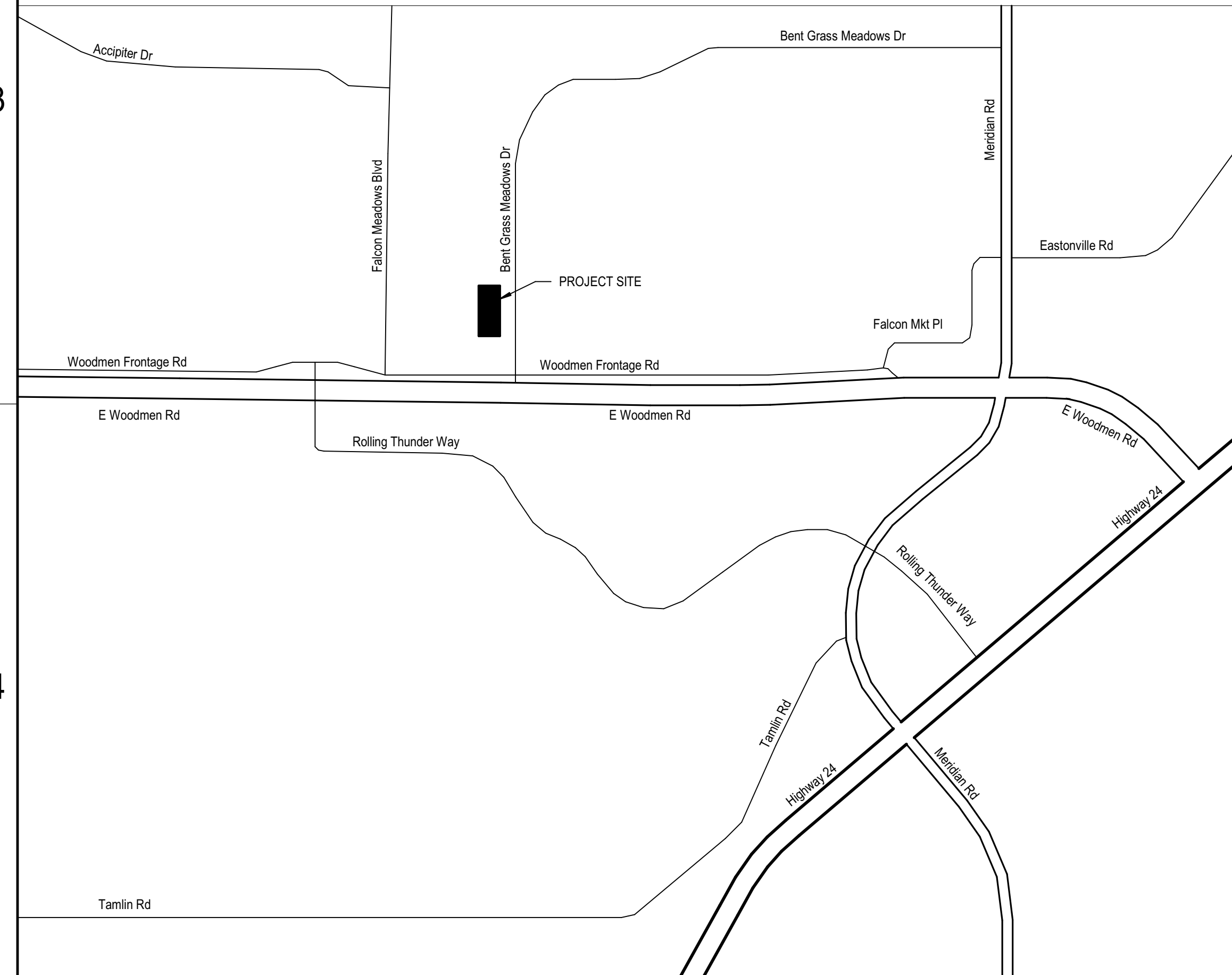
## GROUNDS EXPANSION

10850 E WOODMEN RD  
PEYTON, CO 80831

## DEVELOPMENT PLAN

JANUARY 28, 2025

### VICINITY MAP



### INDEX OF DRAWINGS

- DEVELOPMENT PLAN.
- DP.0 COVER SHEET
  - DP.1 DEVELOPMENT PLAN
  - DP.2 DEVELOPMENT PLAN
  - DP.3 ARCHITECTURAL SITE PLAN
  - DP.4 BARN FLOOR PLAN
  - DP.5 BARN EXTERIOR ELEVATIONS
  - DP.6 COVERED PARKING FLOOR PLAN
  - DP.7 COVERED PARKING EXTERIOR ELEVATIONS
  - DP.8 PHOTOMETRIC PLAN

### PROJECT TEAM

**OWNER**  
SCHOOL DISTRICT 49  
10850 E WOODMEN RD,  
PEYTON, CO 80831  
719.491.2182  
CONTACT:  
BRUCE BROWN  
BRUCE.BROWN@D49.ORG

**MECHANICAL / PLUMBING ENGINEER**  
M-E ENGINEERS, INC  
1125 KELLY JOHNSON BLVD, SUITE 301  
COLORADO SPRINGS, CO 80920  
719.536.0036  
CONTACT:  
JEREMY O'BRIEN, PE, LEED AP  
JEREMY.OBRIEN@ME-ENGINEERS.COM

**ARCHITECT / INTERIOR DESIGN**  
DLR GROUP  
523 S CASCADE, SUITE 100  
COLORADO SPRINGS, CO 80903  
719.634.0205  
CONTACT:  
JADEE HARSMA, AIA, LEED AP BD+C  
JHARSMA@DLRGROUP.COM  
DAVID RIGGS, AIA  
DRIGGS@DLRGROUP.COM

**ELECTRICAL ENGINEER**  
M-E ENGINEERS, INC  
1125 KELLY JOHNSON BLVD, SUITE 301  
COLORADO SPRINGS, CO 80920  
719.536.0036  
CONTACT:  
JEREMY O'BRIEN, PE  
JEREMY.OBRIEN@ME-ENGINEERS.COM

**CIVIL ENGINEER**  
KOWIA ENGINEERING  
1664 S 21ST ST,  
COLORADO SPRINGS, CO 80904  
719.530.7342  
CONTACT:  
ANDY MCCORD  
AMCCORD@KOWIAENGINEERING.COM

### PROJECT DATA

PROJECT ADDRESS: 10850 E WOODMEN RD,  
PEYTON, CO 80831

PARCEL: 5301002006

PARCEL SIZE: 10.19 ACRES

LEGAL DESCRIPTION: LOT 2 LATIGO BUSINESS CENTER FIL NO 1

EXISTING LAND USE/  
DEVELOPMENT: EXEMPT NONRESIDENTIAL LAND - POLITICAL SUBDIVISION

EXISTING ZONING  
DISTRICT: EL PASO COUNTY

BARN GROSS  
BUILDING SF: 10,063 SQUARE FEET

COVERED PARKING  
GROSS BUILDING SF: 26,000 SQUARE FEET

D49 GROUNDS EXPANSION  
CENTRAL OFFICE  
10850 E WOODMEN RD  
PEYTON, CO 80831

DEVELOPMENT  
PLAN  
01.28.2025  
REVISIONS

37-24108-00  
COVER SHEET

DP.0

A

B

C

D

E

REFERENCE KEYNOTES

- BL-1 6" INTERIOR PIPE BOLLARD
- BL-3 6" EXTERIOR PIPE BOLLARD

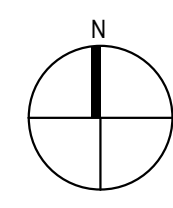
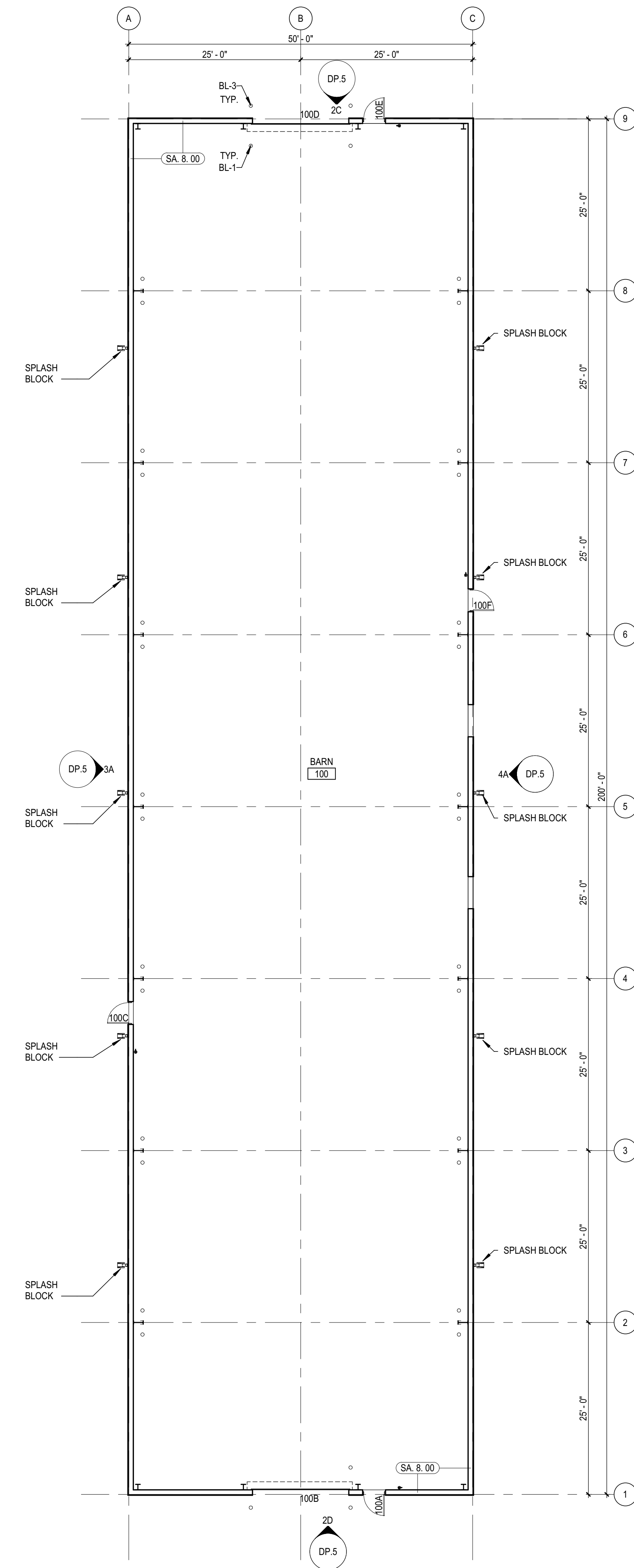


1

2

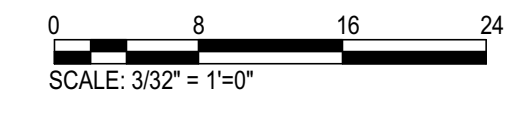
3

4



OVERALL FLOOR PLAN, LEVEL 1

SCALE: 3/32" = 1'-0"



D49 GROUNDS EXPANSION

BARN  
10650 E WOODMEN RD  
PEYTON, CO 80831

DEVELOPMENT PLAN  
01.28.2025  
REVISIONS

37-24108-00  
BARN FLOOR PLAN

DP.4

A

B

C

D

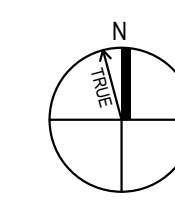
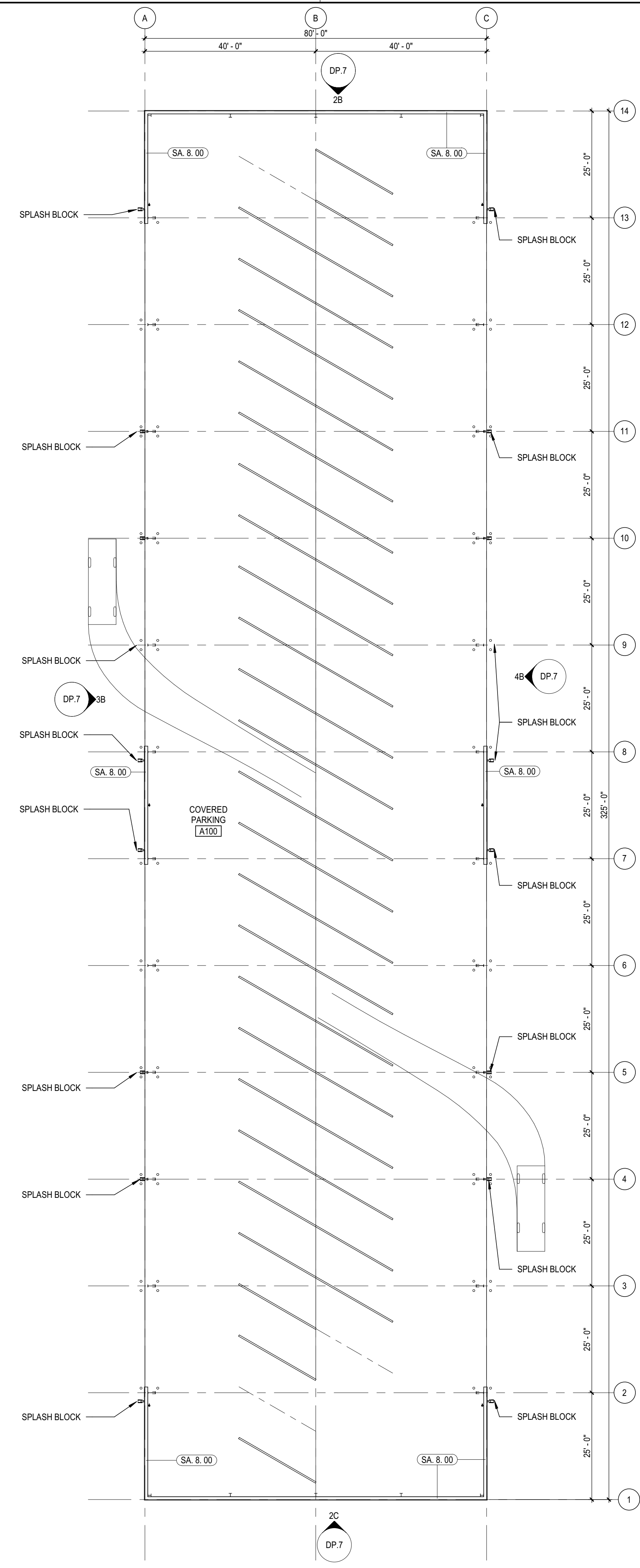
E

1

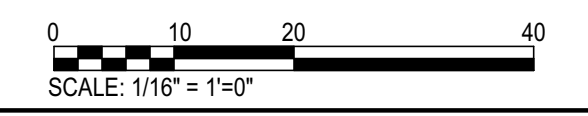
2

3

4



OVERALL FLOOR PLAN, LEVEL 1  
SCALE: 1/16" = 1'-0"



Autodesk Docs/37-241108-00\_D49 Ground Yard Project/37-241108-00\_D49\_CoveredParking\_AR\_2022.rvt  
1/29/2025 1:31:20 PM



**D49 GROUNDS EXPANSION**  
COVERED PARKING  
10650 E WOODMEN RD  
PEYTON, CO 80831

DEVELOPMENT  
PLAN  
01.28.2025  
REVISIONS

37-24108-00  
COVERED  
PARKING FLOOR  
PLAN

**DP.6**