



Know what's below.  
Call before you dig.  
Dial 811

# DUTCH BROS. COFFEE - CO0907, COLORADO SPRINGS, CO

A PORTION OF THE SOUTHWEST QUARTER OF SECTION 6 TOWNSHIP 14 SOUTH, RANGE 65 WEST OF THE 6TH PM  
CITY OF COLORADO SPRINGS, COUNTY OF EL PASO, COLORADO  
PCD FILE NO PPR2413

## GENERAL UTILITY NOTES:

- ALL STRUCTURE ELEVATIONS SHOWN ARE TO CENTER OF STRUCTURE AT FINISH SURFACE (TOP OF ASPHALT OR TOP OF CONCRETE PAVEMENT, NOT TOP OF CURB/SIDEWALK) UNLESS OTHERWISE NOTED.
- ALL UTILITY STRUCTURES EXPOSED TO TRAFFIC SHALL BE TRAFFIC RATED INCLUDING STRUCTURE, LID, ETC.
- ALL UTILITY STRUCTURES WITH LIDS EXPOSED TO PEDESTRIAN TRAFFIC SHALL BE SLIP RESISTANT IN ACCORDANCE WITH ACCESSIBILITY REQUIREMENTS.
- PROVIDE ALL INCIDENTAL FITTINGS, BENDS, WYES, TEES, COUPLINGS, GASKETS, ETC. REQUIRED TO CONSTRUCT THE INFRASTRUCTURE DETICED.
- ALL TRENCHING SHALL CONFORM TO THE REQUIREMENTS OF THE APPLICABLE PURVEYOR.
- PROVIDE MARKING TAPE AND LOCATE WIRE WITH ALL TRENCH INSTALLATIONS.
- ALL SANITARY SEWER PIPING SHALL BE PVC UNLESS DENOTED OTHERWISE. ALL PVC SEWER PIPE SHALL BE SDR-35 CONFORMING TO ASTM D3034.
- ALL WATER PIPING DENOTED AS PVC SHALL CONFORM TO ASTM D1785, SCHEDULE 40.
- ALL SANITARY SEWER MUST MEET THE REQUIREMENTS OF THE CHEROKEE METROPOLITAN DISTRICT AND EL PASO COUNTY

## 7 SANITARY SEWER CONSTRUCTION NOTES:

- POINT OF CONNECTION: CONNECT TO EXISTING SANITARY SEWER PER CHEROKEE METROPOLITAN DISTRICT STANDARDS AND SPECIFICATIONS. INSTALL SANITARY SEWER CLEANOUT PER DETAIL 11/SHT 12. POT HOLE TO VERIFY MATERIAL, SIZE AND DEPTH PRIOR TO CONSTRUCTION. REPORT RESULTS TO ENGINEER REFER TO SEWER CONNECTION NOTE THIS PAGE.
- INSTALL GREASE INTERCEPTOR PER DETAIL 5/SHT 13 AND SAMPLING MANHOLE PER CHEROKEE METROPOLITAN DISTRICT STANDARD. INVERT AND RIM ELEVATIONS AS NOTED IN THE SANITARY SEWER STRUCTURE TABLE. REFER TO ARCHITECTURAL AND PLUMBING PLANS FOR ADDITIONAL INFORMATION. PROVIDE VENT LINE. REFER TO ALL PLUMBING PLANS FOR ADDITIONAL INFORMATION.
- INSTALL SANITARY SEWER CLEANOUT PER DETAIL 11/SHT 12; DIAMETER, RIM AND INVERT ELEVATIONS AS NOTED IN THE STRUCTURE TABLE.
- APPROXIMATE LOCATION OF CONNECTION TO BUILDING, INSTALL 6" SANITARY SEWER CLEANOUT PER DETAIL 11/SHT 12. CONTRACTOR SHALL VERIFY FINAL INVERT ELEVATION, HORIZONTAL/VERTICAL LOCATION, AND SIZE WITH PLUMBING PLANS PRIOR TO CONSTRUCTION.
- INSTALL SEWER LATERAL; PIPE SIZE, MATERIAL, LENGTH, AND SLOPE PER PLANS

## 7 WATER CONSTRUCTION NOTES:

- CONNECT TO EXISTING 1" WATER SERVICE PER CHEROKEE METROPOLITAN DISTRICT STANDARDS AND SPECIFICATIONS. POT HOLE TO VERIFY MATERIAL, SIZE, AND DEPTH PRIOR TO CONSTRUCTION.
- INSTALL 1/2" PVC WATER SERVICE
- APPROXIMATE LOCATION OF WATER SERVICE CONNECTION TO BUILDING. REFER TO PLUMBING PLANS
- INSTALL 3/4" IRRIGATION REDUCED PRESSURE BACKFLOW PREVENTION DEVICE FROM APPROVED LIST BY CHEROKEE METROPOLITAN DISTRICT AND PER EL PASO COUNTY STANDARDS AND SPECIFICATIONS. ABOVE GROUND RPBA SHALL BE ENCLOSED IN SUITABLE ENCLOSURE. ENCLOSURE SHALL BE HEATED AND INSULATED WITH HINGED LOCKABLE LID WHICH EXPOSES TOP AND FRONT OF RPBA. ENCLOSURE SHALL BE EQUIPPED WITH A SCREENED DRAINAGE POINT AT THE BASE AND FLEXIBLE FLAP TO PREVENT DRAITS. CONTRACTOR SHALL COORDINATE INSTALLATION OF 120 VOLT, SINGLE PHASE, 15 AMP GROUND FAULT INTERRUPTING RECEPTACLE (UL STANDARD 943, N.E.M.A. 3P) WITH ELECTRICAL PLANS, INCLUDING CONDUIT ROUTING TO FACILITY. COORDINATE ALL REQUIREMENTS WITH WATER PURVEYOR PRIOR TO CONSTRUCTION.
- INSTALL 3/4" IRRIGATION WATER SERVICE
- EXISTING FIRE HYDRANT. PROTECT FROM DAMAGE DURING CONSTRUCTION.
- INSTALL 3/4" IRRIGATION METER FROM APPROVED LIST BY CHEROKEE METROPOLITAN DISTRICT AND PER EL PASO COUNTY STANDARDS AND SPECIFICATIONS.

## DIY DRY UTILITIES NOTES:

- APPROXIMATE LOCATION OF EXISTING TRANSFORMER. CONTRACTOR SHALL COORDINATE SCOPE OF WORK WITH MEP PLANS AND PURVEYOR PRIOR TO CONSTRUCTION
- APPROXIMATE LOCATION OF POWER CONNECTION TO BUILDING. REFER TO ELECTRICAL PLANS FOR FINAL LOCATION. CONTRACTOR SHALL INSTALL TWO (2) 4" CONDUITS WITH PULL TAPE FOR INSTALLATION; ALL CHANGES IN DIRECTION CHANGES MUST INCORPORATE A MINIMUM 3' RADIUS SWEEP. CONTRACTOR TO COORDINATE SCOPE OF WORK WITH MEP PLANS AND PURVEYOR PRIOR TO CONSTRUCTION
- APPROXIMATE LOCATION OF UNDERGROUND DATA/COMM/TELE SERVICE LINE CONTRACTOR SHALL INSTALL ONE (1) 4" CONDUIT WITH PULL TAPE FOR DATA/COMM/TELEPHONE SERVICE. CONNECT TO EXISTING COMMUNICATION BOX. CONTRACTOR TO COORDINATE SCOPE OF WORK WITH MEP PLANS AND PURVEYOR PRIOR TO CONSTRUCTION.
- APPROXIMATE LOCATION OF DATA/COMM/TELE CONNECTION TO BUILDING. REFER TO MEP PLANS FOR FINAL LOCATION.
- CONNECT TO EXISTING DATA/COMM/TELE SERVICE. CONTRACTOR SHALL COORDINATE SCOPE OF WORK WITH MEP PLANS AND PURVEYOR PRIOR TO CONSTRUCTION.
- CONNECT TO EXISTING POWER. CONTRACTOR TO COORDINATE SCOPE OF WORK WITH MEP PLANS AND PURVEYOR PRIOR TO CONSTRUCTION

① BOTTOM UTILITY	TOP	TOP UTILITY	INVERT	FEAR
1 DOMESTIC WATER	#6292.20	ELECTRICAL	#6293.20	±1.0'
2 SEWER	#6293.05	DOMESTIC WATER	#6294.05	±1.0'
3 SEWER	#6292.88	DOMESTIC WATER	#6294.05	±1.1'
4 SEWER	#6292.24	EX. ELECTRICAL	#6293.25	±1.0'
5 SEWER	#6292.21	EX. ELECTRICAL	#6293.25	±1.0'

UTILITY CROSSING NOTE:  
CONTRACTOR SHALL MAINTAIN MINIMUM VERTICAL SEPARATION BETWEEN UTILITIES AS REQUIRED BY JURISDICTIONS HAVING AUTHORITY. CONTRACTOR TO VERIFY SEPARATION REQUIREMENTS PRIOR TO CONSTRUCTION AND NOTIFY ENGINEER OF ANY DISCREPANCIES.

\*NOTE: APPROXIMATE ELEVATION. CONTRACTOR TO VERIFY WITH UTILITY POT HOLE PRIOR TO CONSTRUCTION.

wrong → state 6.5m water lines

## UTILITY CROSSING NOTE:

CONTRACTOR SHALL MAINTAIN MINIMUM VERTICAL SEPARATION BETWEEN UTILITIES AS REQUIRED BY JURISDICTION HAVING AUTHORITY. CONTRACTOR TO VERIFY SEPARATION REQUIREMENTS PRIOR TO CONSTRUCTION AND NOTIFY ENGINEER OF ANY DISCREPANCIES.

## UTILITY POTHOLING NOTE:

THE CIRCLED LOCATIONS ARE REQUIRED TO BE POT HOLED TO VERIFY VERTICAL AND HORIZONTAL LOCATION OF EXISTING UTILITY AND/OR POTENTIAL CONFLICTS WITH EXISTING UTILITIES. POTHOLING SHALL BE PERFORMED PRIOR TO INSTALLING ANY PROPOSED UTILITIES. CONTRACTOR SHALL NOTIFY BARGHAUSEN CONSULTING ENGINEERS, INC. OF ANY CONFLICTS.

## UTILITY PROTECTION NOTE:

APPROXIMATE LOCATION OF EXISTING GAS SERVICE IS SHOWN ON THESE PLANS. CONTRACTOR SHALL COORDINATE WITH PURVEYOR AND USE EXTREME CAUTION WHEN EXCAVATING ON-SITE UNTIL EXISTING GAS SERVICE LOCATION HAS BEEN CONFIRMED. CONTRACTOR SHALL HAVE ALL GAS AND POWER SERVICES LOCATED PRIOR TO CONSTRUCTION.

## UTILITY COORDINATION NOTE:

ALL POWER, AND DATA/COMMUNICATIONS/TELEPHONE CONNECTIONS AND SERVICES COORDINATION IS ON GOING. WE ARE CURRENTLY WORKING WITH ALL APPLICABLE AGENCIES TO COORDINATE POINTS OF CONNECTIONS AND ROUTING. ON-SITE UTILITY LAYOUT MAY SHIFT AND OR BE RELOCATED ACCORDINGLY DURING COORDINATION.

## UTILITY CONFLICT NOTE:

THE CONTRACTOR SHALL BE RESPONSIBLE FOR VERIFYING THE LOCATION, DIMENSION, AND DEPTH OF ALL EXISTING UTILITIES WHETHER SHOWN ON THESE PLANS OR NOT BY POTHOLES. THE UTILITIES AND SURVEYING THE HORIZONTAL AND VERTICAL LOCATION PRIOR TO CONSTRUCTION THIS SHALL INCLUDE CALLING UTILITY LOCATE @ 811 AND THEN POTHOLES ALL OF THE EXISTING UTILITIES AT LOCATIONS OF NEW UTILITY CROSSINGS TO PHYSICALLY VERIFY WHETHER OR NOT CONFLICTS EXIST. LOCATIONS OF SAID UTILITIES AS SHOWN ON THESE PLANS ARE BASED UPON THE UNVERIFIED PUBLIC INFORMATION AND ARE SUBJECT TO VARIATION. IF CONFLICTS SHOULD OCCUR, THE CONTRACTOR SHALL NOTIFY BARGHAUSEN CONSULTING ENGINEERS, INC. TO RESOLVE ALL PROBLEMS PRIOR TO PROCEEDING WITH CONSTRUCTION.

GREASE INTERCEPTOR, RIM=6295.04 IE=6292.25 (4" IN W) IE=6292.25 (4" OUT E)
SAMPLE PORT, RIM=6295.04 IE=6292.14 (4" IN W) IE=6292.14 (4" OUT E)
SSCO#1, RIM=6296.18 IE=6292.60 (6" OUT S)
SSCO#2, RIM=6296.18 IE=6292.60 (4" OUT S)
SSCO#3, RIM=6294.85 IE=6291.94 (6" OUT N)
SSCO#4, RIM=6295.55 IE=6291.78 (6" IN S) IE=6291.78 (6" OUT NE)
SSCO#5, RIM=6295.76 IE=6291.57 (6" IN SW)

## SEWER/WATER CROSSING NOTE:

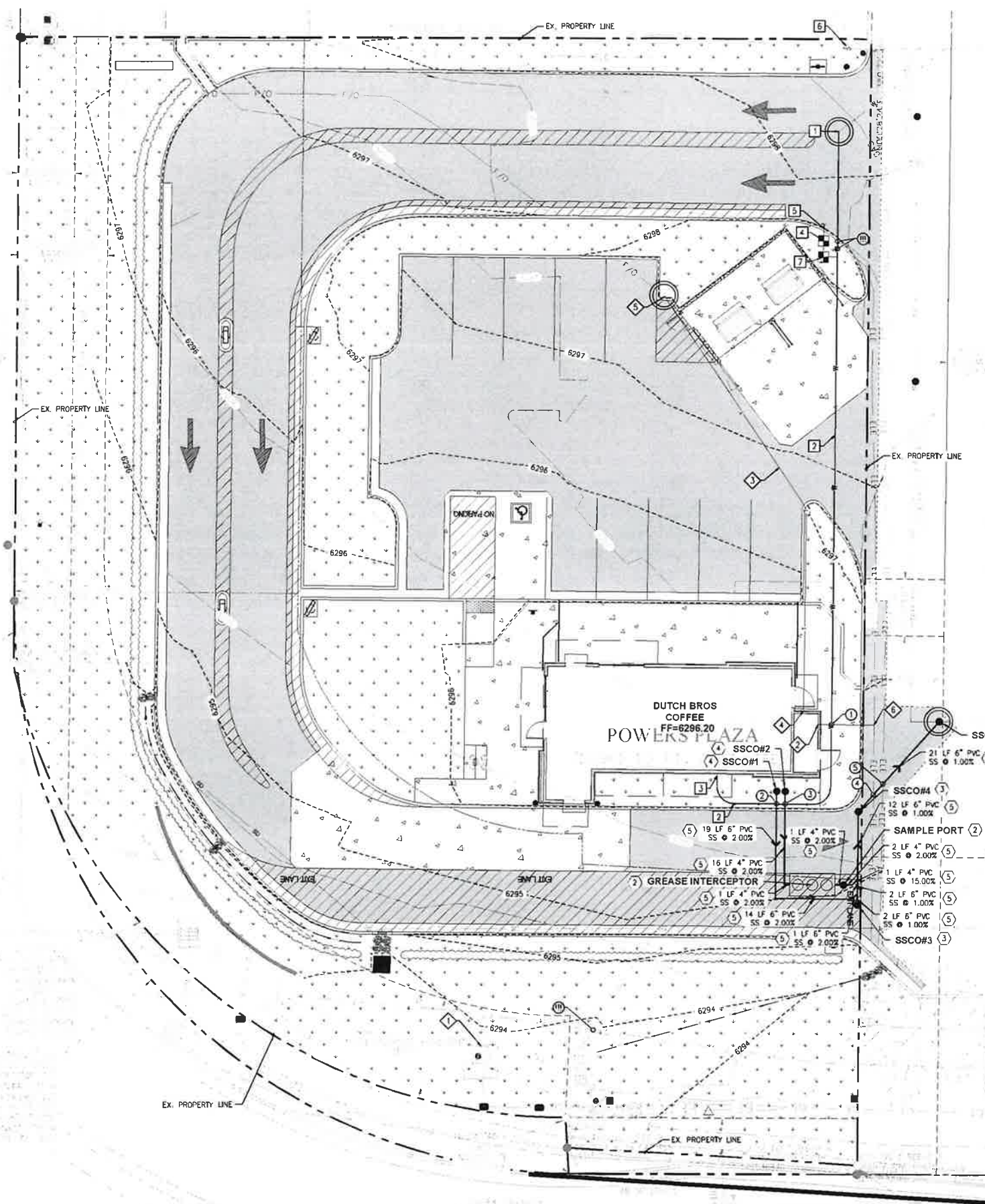
ALL SEWER AND WATER LINE CROSSINGS MUST BE PERPENDICULAR TO EACH OTHER.

## GAS NOTE:

GAS METERS MUST BE A MINIMUM OF 3 FT AWAY FROM ANY OPENING IN WALLS. ENSURE GAS METER HAS 3 FT RADIAL SEPARATION FROM DOORS, OPERABLE WINDOWS, AND SOURCES OF IGNITION.

## VALVE NOTES:

ANY VALVES EMPLACED MUST OPEN WITH A LEFT TURN



**UTILITY PLAN**  
5810 OMAHA BLVD  
COLORADO SPRINGS, CO 80915

**DUTCH BROS**

For:

Scale: Horizontal 1" = 10', Vertical N/A

Designed: EMM, Down: EMM, Checked: ASM, Approved: ABU, Date: 05/28/24

**Barghausen Consulting Engineers, Inc.**  
18215 72nd Avenue South  
Kent, WA 98032  
425.251.6222  
barghausen.com

**B**

Job Number: 23098  
Sheet: 11  
PPR2413

The name DUTCH BROS. and all associated logos, distinctive design, content, information, and other materials featured, displayed, contained herein, and made available by Dutch Bros., including but not limited to, the "look and feel" of the establishments and products, all text, images, colors, configurations, graphics, designs, illustrations, photographs, and pictures (collectively, the "materials") are owned by and/or licensed by DB Franchising USA, LLC and are protected by copyright, trademark, trade dress, patent, and/or other intellectual property rights and unfair competition laws under the United States and foreign laws.