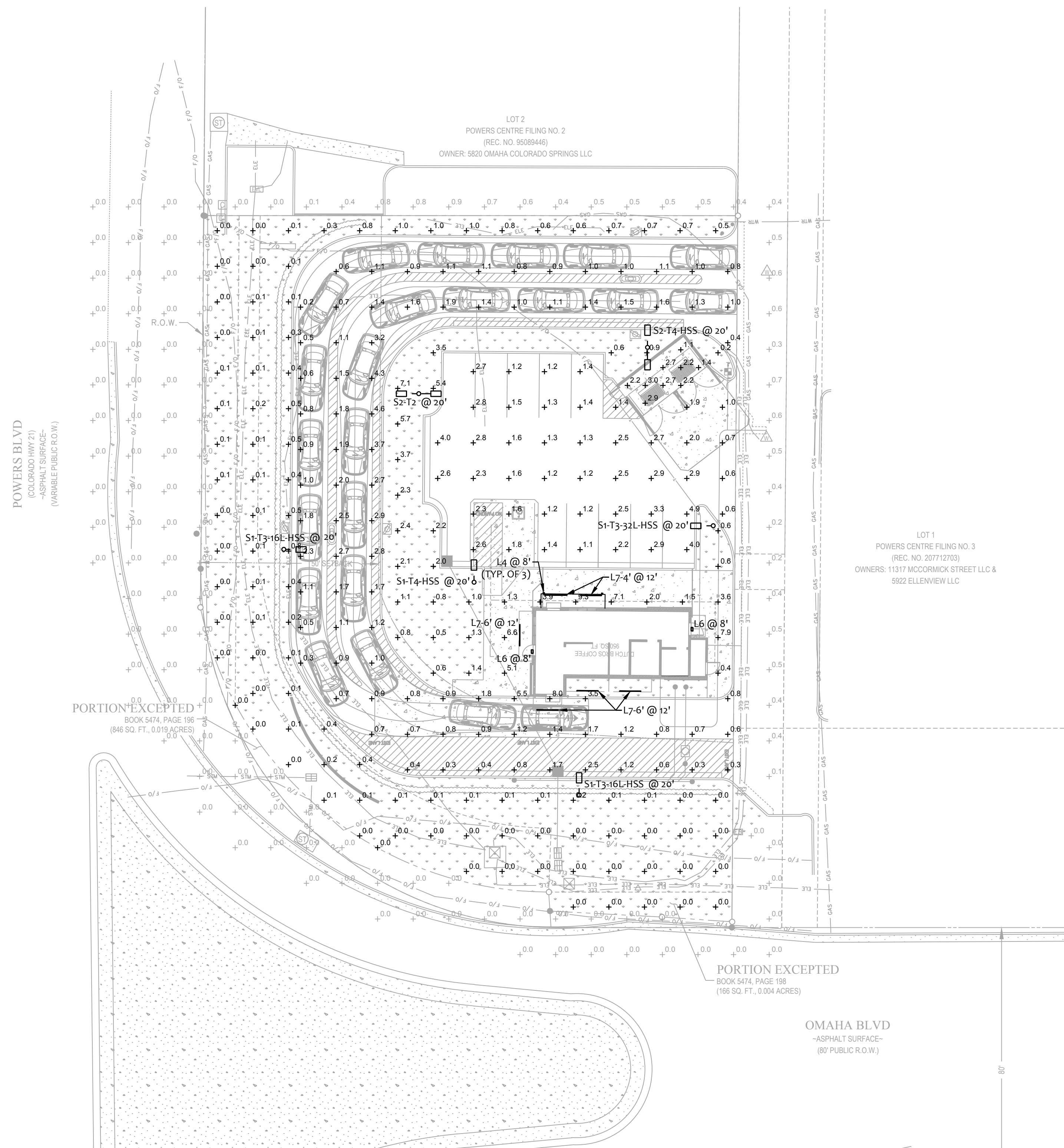


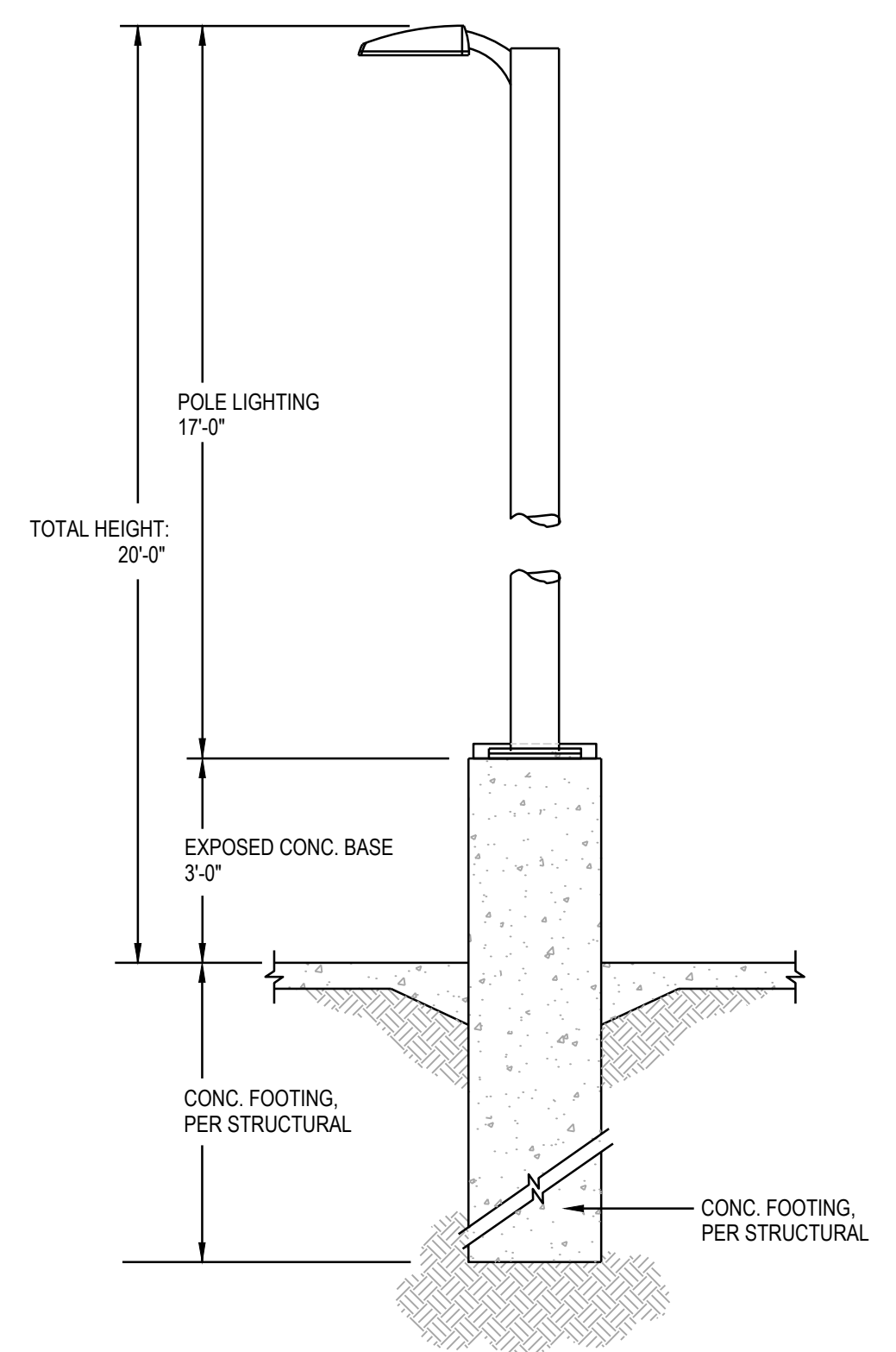
The name DUTCH BROS. and all associated logos, distinctive designs, content, information, and other materials featured, displayed, contained herein, and made available by Dutch Bros., including but not limited to, the "lock and leaf" of the establishments and products, all text, images, colors, configurations, graphics, designs, illustrations, photographs, and pictures (collectively, the "Materials") are owned by and/or licensed by DB Franchising USA, LLC and are protected by copyright, trademark, trade dress, patent, and/or other intellectual property rights and unfair competition laws under the United States and foreign laws.



1 PHOTOMETRIC SITE PLAN
SCALE: 1/20" = 1'-0"
NORTH

Symbol	Label	Quantity	Manufacturer	Catalog Number / BUG Rating	Description	Filename	Lumens Per Lamp	Light Loss Factor	Wattage
□	L4	3	LIGMAN	UMT-31416-DBNA-14/14W-N-W40 UNDER CANOPY	EXTERIOR LIGHT SCONCE, 3" SQUARE, UP/DOWN 4000K, WET LOCATION	MT-31416-N-N-W40.IES	1100	0.72	28.6
□	L6	2	RAB LIGHTING INC.	WPLED26Y-WPLED26Y/D10 UNDER CANOPY	CAST FINNED METAL HOUSING, MOLDED PLASTIC REFLECTOR WITH SEMI-SPECULAR FINISH	rab02623.ies	3295	0.72	29.7
	L7-4'	2	Self	CROWN-47-40K-110-S-SSP UNDER CANOPY	CROWN-L90-277V 840_BA110	CROWN-L90-277V-840_BA110_IESNA2002.ies	4200	0.72	40
	L7-6'	4	Self	CROWN-70-40K-110-S-SSP UNDER CANOPY	CROWN-L144-277V 840_BA110	CROWN-L144-277V-840_BA110_IESNA2002.ies	6300	0.72	60
□	S1-T3-16L-HSS	2	NLS Lighting LLC	NV-1-T3-16L-1-30K-UNV-HSS B0-UG-G1	NV Series Area Lighting Fixture	NV-1-T3-16L-1-30K-HSS.IES	3530	0.91	56
□	S1-T3-32L-HSS	1	NLS Lighting LLC	NV-1-T3-32L-1-30K-UNV-HSS B1-UG-G2	NV Series Area Lighting Fixture	NV-1-T3-32L-1-30K-HSS.IES	6682	0.91	106
□	S1-T4-HSS	1	NLS Lighting LLC	NV-1-T4-16L-1-30K-UNV-HSS B0-UG-G1	NV Series Area Lighting Fixture	NV-1-T4-16L-1-30K-HSS.IES	3473	0.91	56
□	S2-T2	1	NLS Lighting LLC	NV-1-T2-16L-1-30K-UNV B1-UG-G1	NV Series Area Lighting Fixture	NV-1-T2-16L-1-30K.IES	(2) 6162	0.91	112
□	S2-T4-HSS	1	NLS Lighting LLC	NV-1-T4-16L-1-30K-UNV-HSS B0-UG-G1	NV Series Area Lighting Fixture	NV-1-T4-16L-1-30K-HSS.IES	(2) 3473	0.91	112

Description	Symbol	AVG	MAX	MIN	MAXMIN	AVGMIN
Drive-thru	+	1.5 FC	8.0 FC	0.2 FC	40.0:1	7.5:1
Hardscape	+	2.8 FC	9.3 FC	0.0 FC	N/A	N/A
Parking	+	2.0 FC	4.9 FC	0.6 FC	8.2:1	3.3:1
Trash Enclosure	+	2.3 FC	3.0 FC	1.1 FC	2.7:1	2.1:1
Outside PL	+	0.1 FC	0.9 FC	0.0 FC	N/A	N/A



POLE BASE DETAIL
SCALE: N.T.S.

NOTE:
PROVIDE A CONCRETE CHRISTY BOX WITH TRAFFIC RATED COVER BY EACH LIGHT POLES FOR THE INTERFACE OF CONDUITS

NOTE:
REFER TO STRUCTURAL/ARCHITECTURAL DETAIL FOR ADDITIONAL REQUIREMENT.



ARMÉT DAVIS NEWLOVE & ASSOCIATES, AIA ARCHITECTS
1330 OLYMPIC BLVD.
SANTA MONICA, CALIFORNIA 90404
PH 310 452-5533 FAX 310 450-4742

THE USE OF THESE PLANS AND SPECIFICATIONS SHALL BE RESTRICTED TO THE ORIGINAL SITE FOR WHICH THEY WERE PREPARED AND PUBLICATION THEREOF IS EXPRESSLY LIMITED TO SUCH USE. RE-USE, REPRODUCTION OR PUBLICATION BY ANY METHOD, IN WHOLE OR IN PART, IS PROHIBITED. TITLE TO THE PLANS AND SPECIFICATIONS REMAINS WITH THE ARCHITECT WITHOUT PREJUDICE. VISUAL CONTACT WITH THESE PLANS AND SPECIFICATIONS SHALL CONSTITUTE FRAUD. EVIDENCE OF THE ACCEPTANCE OF THE RESTRICTIONS.



Project No: CO0907
Dutch Bros Coffee - New Freestanding Store
DB2550-A2
5810 OMAHA BLVD.
COLORADO SPRINGS, CO 80915

ACIES
ENGINEERING
400 N. McCarthy Blvd., Suite 250
Milpitas CA, 95035
ph: (408) 522-5255 | fr: (408) 522-5260
info@acies.net | Copyright © 2024

DATE: 03/08/2024
REV: DATE: DESCRIPTION:

SHEET NUMBER:

PHOTOMETRIC SITE PLAN

SHEET NUMBER:

E0.02

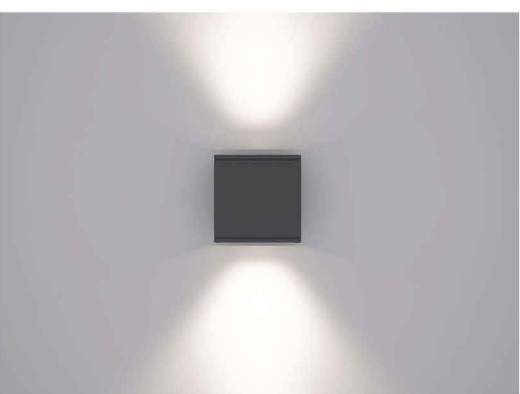
FILE NUMBER PPR2413

© 2024 DB Franchising USA, LLC

The name DUTCH BROS. and all associated logos, distinctive designs, content, information, and other materials featured, displayed, contained herein, and made available by Dutch Bros., including but not limited to, the "flock and feel" of the establishments and products, all text, images, colors, configurations, graphics, designs, illustrations, photographs, and pictures (collectively, the "Materials") are owned by and/or licensed by DB Franchising USA, LLC and are protected by copyright, trademark, trade dress, patent, and/or other intellectual property rights and unfair competition laws under the United States and foreign laws.

UMT-31416-DBNA

Matrix 3 Surface



Length - 7" | Height - 6.3" | Weight 4.6 lbs
IP65 - Suitable For Wet Locations
IK04 - Impact Resistant (Vandal Resistant)

7144 NE Progress Ct Hillsboro, Oregon 97124 T: 503.645.0500 F: 503.645.8100 www.ligmanlightingusa.com

LIGMAN LIGHTING USA

Construction
Aluminum
 Less than 0.1% copper content - Marine Grade 6060 extruded & LM5 Aluminum High Pressure die casting provides excellent mechanical strength, clean detailed product lines and excellent heat dissipation.
Pre-paint
 8 step de-grease and phosphate process that includes deoxidizing and etching as well as a zinc and nickel phosphate process before product painting.
Memory Retentive - Silicon Gasket
 Provided with special injection molded "fit for purpose" long life high temperature memory retentive silicon gaskets. Maintains the gaskets exact profile and seal over years of use and compression.
Thermal management
 LM5 Aluminum is used for its excellent mechanical strength and thermal dissipation properties in low and high ambient temperatures. The superior thermal heat sink design by Ligman used in conjunction with the driver, controls thermal below critical temperature range to ensure maximum luminous flux output, as well as providing long LED service life and ensuring less than 10% lumen depreciation at 50,000 hours.
Surge Suppression
 Standard 10kV surge suppressor provided with all fixtures.
BUG Rating
 B1 - US - 50
Finishing
 All Ligman products go through an extensive finishing process that includes letting to improve paint adherence.
Paint
 UV Stabilized 4.9Mil thick powder coat paint and baked at 200 Deg C. This process ensures that Ligman products can withstand harsh environments. Rated for use in natoriums.
Hardware
 Provided Hardware is Marine grade 316 Stainless steel.
Anti-Seize Screw Holes
 Tapped holes are infused with a special anti-seize compound designed to prevent seizure of threaded connections, due to electrolysis from heat, corrosive atmospheres and moisture.
Crystal Clear Low Iron Glass Lens
 Provided with tempered, impact resistant crystal clear low iron glass ensuring no green glass tinge.
Optics & LED
 Precise optic design provides exceptional light control and precise distribution of light. LED CRI > 80
Lumen - Maintenance Life
 L80 (B10) at 50,000 hours (This means that at least 90% of the LED still achieve 80% of their original flux)

Square surface wall-mounted architectural lighting range. Family of lighting effects sanctioning imagination and inspiration to reign in designs.

A small profile wall mounted compact cubic luminaire with up and downward light distributions. The Matrix is designed with five light distribution options, namely narrow, medium, wide, very wide and spike.

The Matrix uses high efficiency, long life LEDs and is designed to illuminate the wall and surfaces in front of the wall, as well as light accents on vertical and horizontal surfaces. The Matrix is suitable for indoor and outdoor applications.

This luminaire is available with decorative spikes and can be used with various combinations of light distribution optics.

This luminaire can be mounted at different angles to produce interesting decorative lighting effects on the side of the building facade. The standard Matrix is designed to mount over a 3" octagonal j-box, a 4" j-box cover plate is available upon request.

Mounting Detail



Matrix Product Family




UMT-31416-DBNA

Matrix 3 Surface

7144 NE Progress Ct Hillsboro, Oregon 97124 T: 503.645.0500 F: 503.645.8100 www.ligmanlightingusa.com

LIGMAN LIGHTING USA

PROJECT **DATE**

QUANTITY **TYPE** **NOTE**

ORDERING EXAMPLE || UMT - 31416 - 14/14w - W30 - 02 - 120/277v - Options

LAMP	BEAM	LED COLOR	FINISH COLOR	VOLTAGE
14/Hw COB 1128 Lumens Down 1128 Lumens Up	N - Narrow 20" M - Medium 25" W - Wide 36" VW - Very Wide 74"	W27 - 2700K W30 - 3000K W35 - 3500K W40 - 4000K	01 - BLACK RAL 9003 02 - DARK GREY RAL 7043 03 - WHITE RAL 9003 04 - METALLIC SILVER RAL 9006 05 - MATTE SILVER RAL 9006 06 - LIGMAN BRONZE 07 - CUSTOM RAL	120/277v Other - Specify

ADDITIONAL OPTIONS

NAT - Natorium Rated F - Frosted Lens 43 - Mounting Plate for 4" Junction Box DIM - 0-10v Dimming	COLORED DICHROIC FILTERS RD - Red Lens BL - Blue Lens GR - Green Lens AM - Amber Lens (Specify Other Color)
--	---



L6

Job: Dutch Brothers Coffee Prototype
Descr: Exterior Wallpack

WPLED26Y/E **RAB**



26 Watt LED wallpack with emergency backup battery that will last for 90 minutes during power interruption. Patent Pending thermal management system, 100,000 hour L70 lifespan, 5 Year Warranty.
Color: Bronze Weight: 14.0 lbs

Project:	Type:
Prepared By:	Date:

Driver Info	LED Info
Type: 1226	Constant Current: 26W
208V: 0.25A	Color Temp: 3000K
240V: 0.15A	Color Accuracy: 71 CRI
277V: 0.14A	L70 Lifespan: 100000
277V: 0.12A	Lumens: 3296
Input Watts: 26W	Efficiency: 112 LPW
Efficiency: 88%	

Technical Specifications

Other
Battery Backup: Minimum starting temperature is 0°C/32°F.
Patents: The WPLED design is protected by U.S. Patent D634878 and Patents pending in the U.S., Canada, China, Taiwan and Mexico.
Equivalency: Equivalent to 175W Metal Halide.
FTC Country of Origin: This product was assembled in the USA by RAB using imported components.
Buy American Act Compliance: This product complies with the Buy American Act.
Listings: This product is on the Design Lights Consortium (DLC) Qualified Products List and is eligible for rebates from DLC Member Utilities.
DLC Product Code: P00001750
UL Listing: Suitable for Wet Locations as downlight, Wall Mount, Only, Battery Backup UL 524 Listed Emergency Lighting Power Supply.
LED Characteristics
Lifespan: 100,000-hour LED lifespan based on IES LM-80 results and TM-21 calculations.
LED: Two (2) 13W High-output, long-life LEDs.
Color Consistency: 3-step MacAdam Ellipse binning to achieve consistent future-to-future color.
Color Stability: LED color temperature is warranted to shift no more than 200K in CCT over a 5-year period.
Color Uniformity: RAB's range of CCT (Correlated Color Temperature) follows the guidelines of the American National Standard for Specifications for the Chromaticity of Solid State Lighting (SSL) Products, ANSI C78-377-2017.
Electrical
Battery Mode: Light output use LLD of 76 to simulate light output during battery mode operation.
Driver: Constant Current, Class 2, 50/60 Hz, 120 - 277VAC, 0.4 Amps.
Battery Backup
Backup Battery: Two lead-rechargeable, high-temperature, maintenance-free, nickel-cadmium batteries.
Construction
Ambient Temperature: Suitable for use in 35°C (95°F) ambient temperatures.
Gaskets: High temperature silicones.
Housing: Precision die-cast aluminum housing, lens frame and mounting arm.
Finish: Formulated for high-durability and long lasting color.
Green Technology: Mercury and UV free, RoHS compliant components. Polyester powder coat finish formulated without the use of VOC or toxic heavy metals.
Optical
BUG Rating: B1 US 00

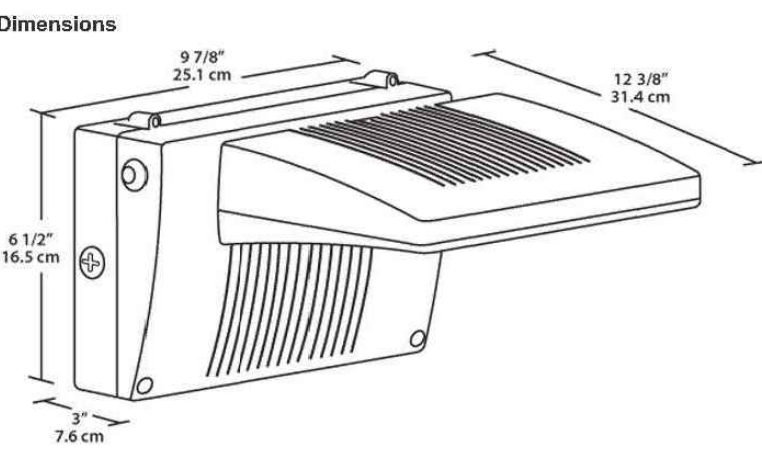
Need help? Tech help line: (888) RAB-1000 Email: sales@rabweb.com Website: www.rabweb.com
 Copyright © 2018 RAB Lighting Inc. All Rights Reserved. Note: Specifications are subject to change at any time without notice.

Page 2 of 2

WPLED26Y/E

RAB

Dimensions



Features

- Backup battery UL 524 listed
- UL listed for wet locations
- 90 minutes illumination time during power interruption
- includes test switch and charge indicator light
- Universal input voltage
- 5-year warranty

Ordering Matrix

Family	Wattage	Color Temp	Finish	Battery Backup	Photocell
WPLED	26 = 26W	Blank = 3000K (Warm) Y = 3000K (Warm) N = 4000K (Neutral)	Blank = Bronze W = White	/E = Battery Backup /EB = Cold Start Battery Backup	Blank = No Photocell /PC = 120V Switch /PCS = 120V Switch /PC2 = 277V Switch

Verify required

Need help? Tech help line: (888) RAB-1000 Email: sales@rabweb.com Website: www.rabweb.com
 Copyright © 2018 RAB Lighting, Inc. All Rights Reserved. Note: Specifications are subject to change at any time without notice.

Page 2 of 2



adn

ARMÉT DAVIS NEWLOVE & ASSOCIATES, AIA ARCHITECTS

1330 OLYMPIC BLVD.
 SANTA MONICA, CALIFORNIA 90404
 PH 310 452-5533 FAX 310 450-4742

THE USE OF THESE PLANS AND SPECIFICATIONS SHALL BE RESTRICTED TO THE ORIGINAL SITE FOR WHICH THEY WERE PREPARED AND PUBLICATION THEREOF IS EXPRESSLY LIMITED TO SUCH USE. RE-USE, REPRODUCTION OR PUBLICATION BY ANY METHOD, IN WHOLE OR IN PART, IS PROHIBITED. TITLE TO THE PLANS AND SPECIFICATIONS REMAINS WITH THE ARCHITECT WITHOUT PREJUDICE. VISUAL CONTACT WITH THESE PLANS AND SPECIFICATIONS SHALL CONSTITUTE FRAUD. MAKE EVIDENCE OF THE ACCEPTANCE OF THE RESTRICTIONS.



Project No: CO0907

Dutch Bros Coffee - New Freestanding Store

DB2550-A2

5810 OMAHA BLVD.
 COLORADO SPRINGS, CO 80915

ACIES ENGINEERING

400 N. McCarthy Blvd., Suite 250
 Milpitas CA, 95035
 ph: (408)522-5255 | f: (408)522-5260
 info@acies.net | Copyright © 2024

DATE: 03/08/2024
 REV: DATE: DESCRIPTION:

SHEET NUMBER:
 EXTERIOR LIGHTING CUTSHEETS

SHEET NUMBER:
E0.04

The name DUTCH BROS. and all associated logos, distinctive designs, content, information, and other materials featured, displayed, contained herein, and made available by Dutch Bros., including but not limited to, the "hick and feel" of the establishments and products, all text, images, colors, configurations, graphics, designs, illustrations, photographs, and pictures (collectively, the "Materials") are owned by and/or licensed by DB Franchising USA, LLC and are protected by copyright, trademark, trade dress, patent, and/or other intellectual property rights and unfair competition laws under the United States and foreign laws.

L7

Job: Dutch Brothers Coffee
 Descr: Canopy 6' light

Outdoor Cove Lighting CROWN

- Quick connection
- Dimmable, 1-10V dimming to 10%-100%
- Linkable, max. linkable length: 72" @ 120VAC, 156" @ 277VAC
- IP rating: IP66 (for wet locations)
- Lockable, precision aiming adjustment: ±82.5° vertical rotation
- Lifetime: 50,000hrs (L70@35°C)
- T₅₀: -13°F to 122°F (-23°C to 50°C)
- Material: Aluminum alloy
- 10W/ft, 1050lm/ft

Dimensions: (Inches/mm)

Wiring Diagram

AC connection:
 Black: "L"
 White: "N"
 Yellow/green: "G"

Dimming connection:
 Violet: "+"
 Gray: "-"

Outdoor Cove Lighting CROWN

How to order using our catalog numbers:
Example: CROWN-1230K105S

Series	Length	Color Temp	Beam Angle	Finish	Installation
CROWN	12 - 11.8\"/>				

Catalog No.	Model	Description				Included
		Rated Input	Ra	Wattage	Luminous Flux (TPF4000K)	
CROWN-1230K105S	CROWN-L24-277V	120-277VAC	85	10W	1050 lm	1 pc LED fixture 3 pcs Screws 1 pc End cap
CROWN-1240K105S	CROWN-L24-277V	120-277VAC	85	10W	1050 lm	
CROWN-4740K105S	CROWN-L90-277V	120-277VAC	85	40W	4200 lm	
CROWN-7030K105S	CROWN-L144-277V	120-277VAC	85	60W	6300 lm	

How to choose your driver & cables:

Catalog No.	Description	Photo
IC-CROWN-5X	Input cable 5'	

Optional:

Catalog No.	Description	Photo
SC-CROWN-12	Soft connector 12"	
TK-CROWN-79	Track 79", including 3 pcs screws	

Outdoor Cove Lighting CROWN

Installation

Track installation

ARMÉT DAVIS NEWLOVE &
ASSOCIATES, AIA ARCHITECTS

1330 OLYMPIC BLVD.
SANTA MONICA, CALIFORNIA 90404
PH 310 452-5533 FAX 310 450-4742

THE USE OF THESE PLANS AND SPECIFICATIONS SHALL BE RESTRICTED TO THE ORIGINAL SITE FOR WHICH THEY WERE PREPARED AND PUBLICATION THEREOF IS EXPRESSLY LIMITED TO SUCH USE. RE-USE, REPRODUCTION OR PUBLICATION BY ANY METHOD, IN WHOLE OR IN PART, IS PROHIBITED. TITLE TO THE PLANS AND SPECIFICATIONS REMAINS WITH THE ARCHITECT WITHOUT PREJUDICE. VISUAL CONTACT WITH THESE PLANS AND SPECIFICATIONS SHALL CONSTITUTE FRAUD. EVIDENCE OF THE ACCEPTANCE OF THE RESTRICTIONS.

Project No: CO0907
 Dutch Bros Coffee - New Freestanding Store
 DB2550-A2
 5810 OMAHA BLVD.
 COLORADO SPRINGS, CO 80915

ACIES
ENGINEERING
400 N. McCarthy Blvd., Suite 250
Milpitas CA, 95035
ph: (408) 522-5255 | fr: (408) 522-5260
info@acies.net | Copyright © 2024

DATE: 03/08/2024
REV: DATE: DESCRIPTION:

SHEET NAME:
EXTERIOR LIGHTING
CUTSHEETS

SHEET NUMBER:
E0.05

FILE NUMBER PPR2413

© 2024 DB Franchising USA, LLC