



Know what's below.  
Call before you dig.  
Dial 811

# DUTCH BROS. COFFEE - CO0907, COLORADO SPRINGS, CO

A PORTION OF THE SOUTHWEST QUARTER OF SECTION 6 TOWNSHIP 14 SOUTH, RANGE 65 WEST OF THE 6TH PM  
CITY OF COLORADO SPRINGS, COUNTY OF EL PASO, COLORADO

### STORM DRAIN GENERAL NOTES:

1. ALL STRUCTURE ELEVATIONS SHOWN ARE TO CENTER OF STRUCTURE AT FINISH SURFACE (TOP OF ASPHALT OR TOP OF CONCRETE PAVEMENT, NOT TOP OF CURB/SIDEWALK) UNLESS OTHERWISE NOTED.
2. ALL STORM DRAINAGE STRUCTURES EXPOSED TO TRAFFIC SHALL BE TRAFFIC RATED INCLUDING STRUCTURE, LID, ETC.
3. ALL STORM DRAIN PIPING DENOTED AS "PVC" SHALL CONFORM TO ASTM D3034, SDR 35.
5. ALL STORM PIPING INSTALLED WITH LESS THAN 2 FEET OF COVER SHALL BE BACKFILLED WITH A CONTROLLED DENSITY FILL (SLURRY).
6. ALL STORM DRAINAGE STRUCTURES WITH LIDS EXPOSED TO PEDESTRIAN TRAFFIC SHALL BE REEL PROOF AND SLIP RESISTANT IN ACCORDANCE WITH ACCESSIBILITY REQUIREMENTS.
7. PROVIDE ALL INCIDENTAL FITTINGS, BENDS, WYES, TEES, COUPLINGS, GASKETS, ETC. REQUIRED TO CONSTRUCT THE INFRASTRUCTURE DEPICTED.
8. ALL TRENCHING SHALL CONFORM TO THE REQUIREMENTS OF THE APPLICABLE PURVEYOR OR AGENCY SPECIFICATIONS.
9. PROVIDE MARKING TAPE AND LOCATE WIRE WITH ALL TRENCH INSTALLATIONS.
10. CONTRACTOR TO OBTAIN ANY NECESSARY RIGHT-OF-WAY PERMITS IF REQUIRED FOR WORK SHOWN ON PLANS.
11. CONTRACTOR TO RAISE AND ADJUST ALL EXISTING AND PROPOSED UTILITY STRUCTURES LIDS/GRATES TO FINAL GRADE AS NECESSARY. CATCH BASINS WITHIN ADA ACCESSIBLE PATHS SHALL BE ADJUSTED TO FINAL ELEVATIONS IN COMPLIANCE WITH CURRENT ADA REQUIREMENTS.
12. PROVIDE SLURRY BACKFILL OVER ANY UTILITY WHERE PROVIDED COVER IS LESS THAN 2' IN DEPTH.

### STORM DRAIN CONSTRUCTION NOTES:

1. CONNECT TO EXISTING STORM DRAIN INLET, POT HOLE AND VERIFY LOCATION, PIPE DIAMETER, PIPE MATERIAL, AND DEPTH PRIOR TO CONSTRUCTION. REPORT RESULTS TO ENGINEER PRIOR TO PROCEEDING WITH ORDERING MATERIALS. CONTRACTOR TO MAINTAIN MINIMUM VERTICAL SEPARATION BETWEEN UTILITIES AS REQUIRED BY JURISDICTION HAVING AUTHORITY.
2. INSTALL 24"x24" PRECAST CATCH BASIN WITH GRATED LID PER DETAIL 1/SHT 13. RIM ELEVATION AND INVERTS AS NOTED IN THE STRUCTURE TABLE.
3. INSTALL DOWNSPOUT WITH SPLASH BLOCK PER DETAIL 3/SHT 13
4. CONNECT DOWNSPOUT TO 3" PVC SIDEWALK UNDERDRAIN.
5. INSTALL 3" PVC SIDEWALK UNDERDRAIN PER DETAIL 2/SHT 13. MINIMUM SLOPE OF 0.5%.

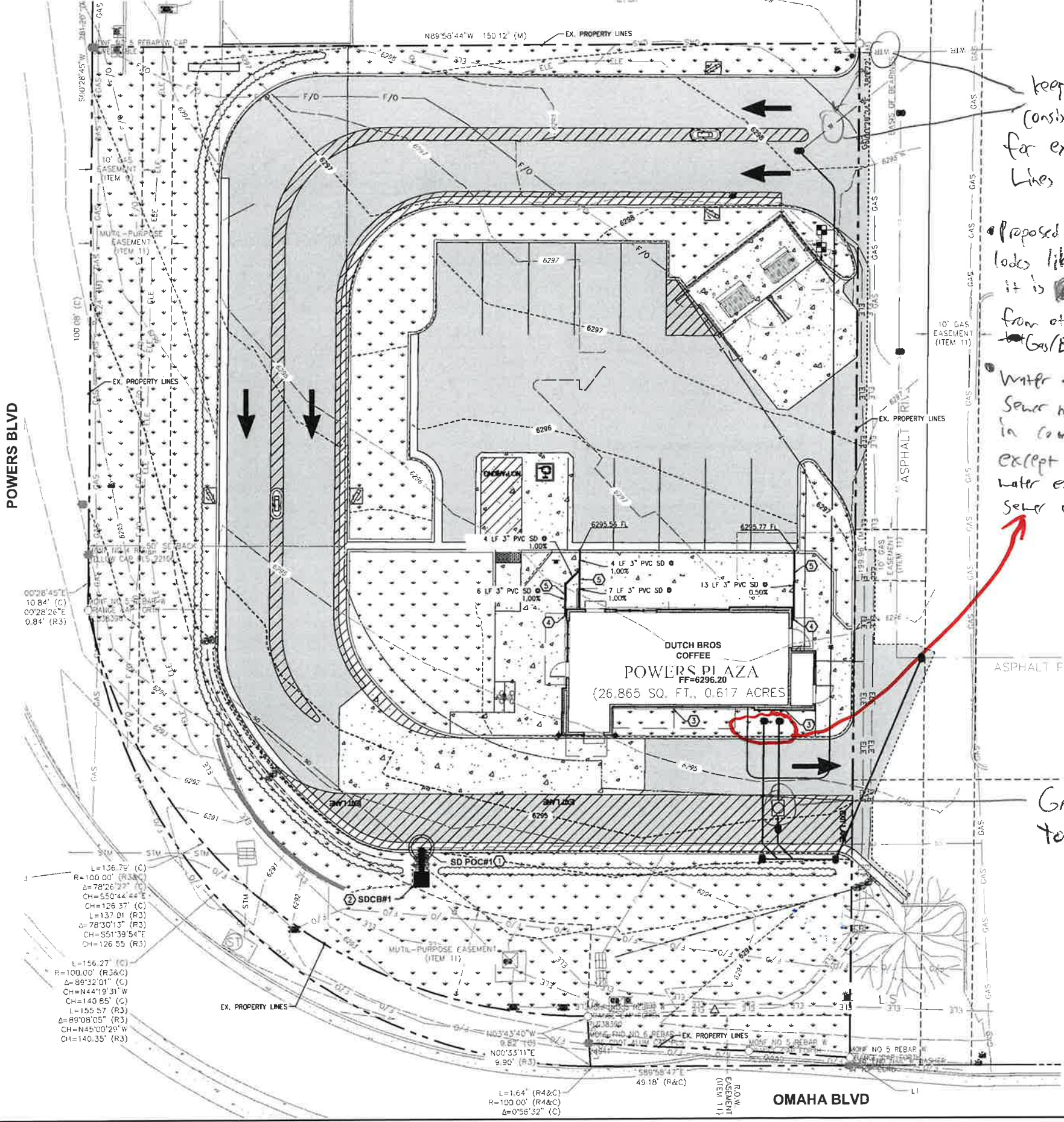
STORM DRAIN STRUCTURES	
SD POC#1, RIM=6291.94 IE=6290.83 (12' S)	
SDCB#1, W/ GRATED LID RIM=6293.55 IE=6290.89 (12' N)	

keep consistency for existing lines

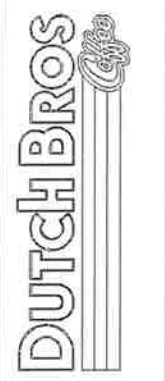
Proposed w/ loads like it is from other Gas/E UTs

Water and Sewer mostly in compliance except where water enters and sewer exits

Grease Interceptor needs to be a minimum of 325 GAL



DRAINAGE PLAN  
5810 OMAHA BLVD  
COLORADO SPRINGS, CO 80915



Scale:	Horizontal 1" = 10'	Vertical N/A
Designed:	EWAL	
Drawn:	JAM	
Checked:	JEM	
Approved:	JEM	
Date:	04/08/24	

### UTILITY CROSSING NOTE:

CONTRACTOR SHALL MAINTAIN MINIMUM VERTICAL SEPARATION BETWEEN UTILITIES AS REQUIRED BY JURISDICTION HAVING AUTHORITY. CONTRACTOR TO VERIFY SEPARATION REQUIREMENTS PRIOR TO CONSTRUCTION AND NOTIFY ENGINEER OF ANY DISCREPANCIES.

### UTILITY POTHOLES NOTE:

THE CIRCLED LOCATIONS ARE REQUIRED TO BE POTHOLED TO VERIFY VERTICAL AND HORIZONTAL LOCATION OF EXISTING UTILITY AND/OR POTENTIAL CONFLICTS WITH EXISTING UTILITIES. POTHOLES SHALL BE PERFORMED PRIOR TO INSTALLING ANY PROPOSED UTILITIES. CONTRACTOR SHALL NOTIFY BARGHAUSEN CONSULTING ENGINEERS, INC. OF ANY CONFLICTS.

### UTILITY PROTECTION NOTE:

APPROXIMATE LOCATION OF EXISTING GAS SERVICE IS SHOWN ON THESE PLANS. CONTRACTOR SHALL COORDINATE WITH PURVEYOR AND USE EXTREME CAUTION WHEN EXCAVATING ON-SITE UNTIL EXISTING GAS SERVICE LOCATION HAS BEEN CONFIRMED. CONTRACTOR SHALL HAVE ALL GAS AND POWER SERVICES LOCATED PRIOR TO CONSTRUCTION.

### UTILITY COORDINATION NOTE:

ALL POWER, AND DATA/COMMUNICATIONS/TELEPHONE CONNECTIONS AND SERVICES COORDINATION IS ON GOING. WE ARE CURRENTLY WORKING WITH ALL APPLICABLE AGENCIES TO COORDINATE POINTS OF CONNECTIONS AND ROUTING. ON-SITE UTILITY LAYOUT MAY SHIFT AND OR BE RELOCATED ACCORDINGLY DURING COORDINATION.

### UTILITY CONFLICT NOTE:

THE CONTRACTOR SHALL BE RESPONSIBLE FOR VERIFYING THE LOCATION, DIMENSION, AND DEPTH OF ALL EXISTING UTILITIES WHETHER SHOWN ON THESE PLANS OR NOT BY POTHOLES. THE UTILITIES AND SURVEYING THE HORIZONTAL AND VERTICAL LOCATION PRIOR TO CONSTRUCTION. THIS SHALL INCLUDE CALLING UTILITY LOCATE @ 811 AND THEN POTHOLES ALL OF THE EXISTING UTILITIES AT LOCATIONS OF NEW UTILITY CROSSINGS TO PHYSICALLY VERIFY WHETHER OR NOT CONFLICTS EXIST. LOCATIONS OF SAID UTILITIES AS SHOWN ON THESE PLANS ARE BASED UPON THE UNVERIFIED PUBLIC INFORMATION AND ARE SUBJECT TO VARIATION. IF CONFLICTS SHOULD OCCUR, THE CONTRACTOR SHALL NOTIFY BARGHAUSEN CONSULTING ENGINEERS, INC. TO RESOLVE ALL PROBLEMS PRIOR TO PROCEEDING WITH CONSTRUCTION.



Job Number  
**23098**

Sheet  
**10**

The name DUTCH BROS. and all associated logos, distinctive designs, content, information, and other materials featured, contained herein, and made available by Dutch Bros., including but not limited to, the "look and feel" of the establishments and products, all text, images, colors, configurations, graphics, design, illustrations, photographs, and pictures (collectively, the "materials") are owned by and/or licensed by DB Franchising USA, LLC and are protected by copyright, trademark, trade dress, patent, and/or other intellectual property rights and unfair competition laws under the United States and foreign laws.

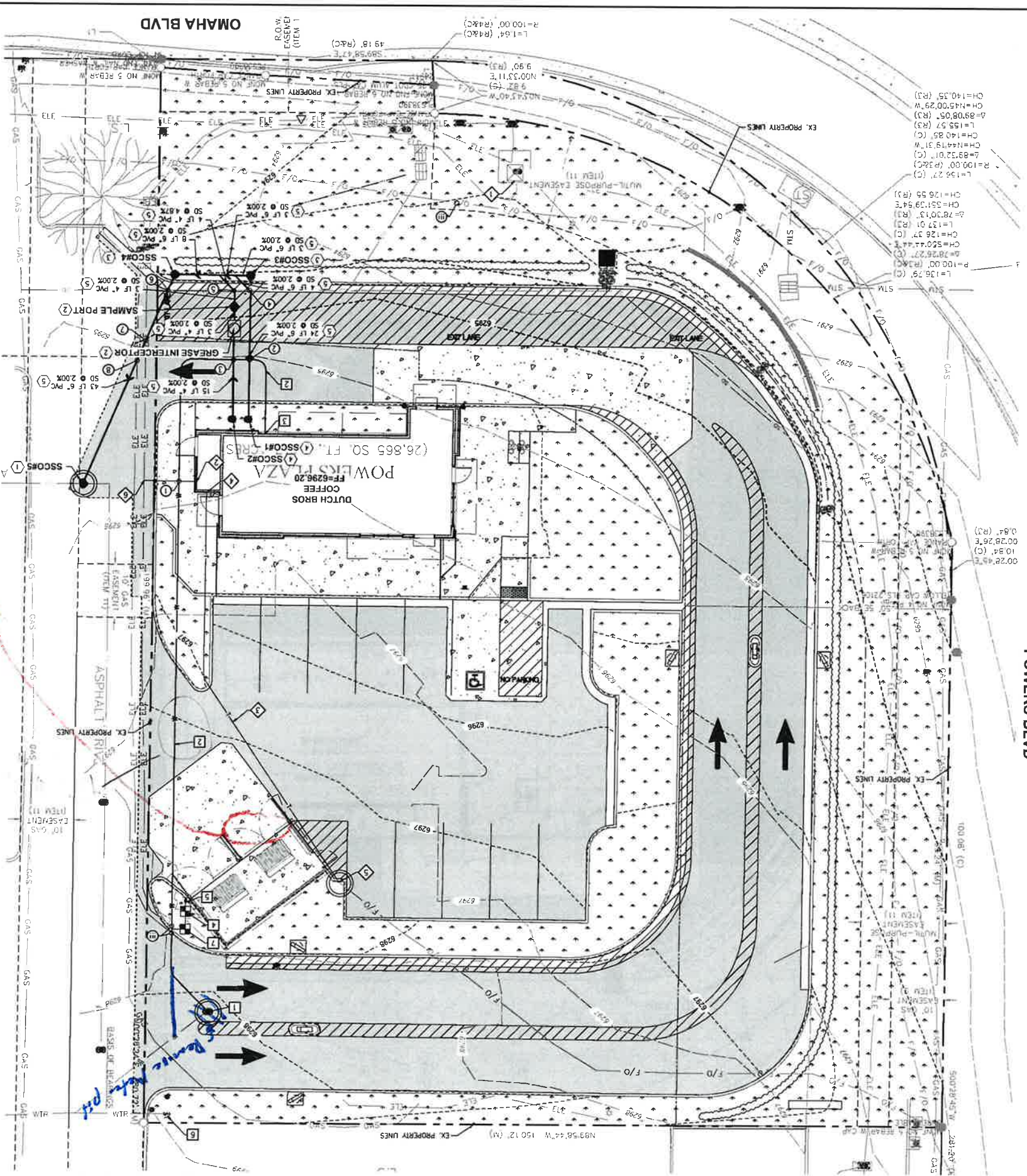
The name DUTCH BROS. and all associated logos, distinctive designs, content, information, and other materials featured, displayed, contained herein, and made available by Dutch Bros., including but not limited to, the "look and feel" of the establishments and products, all text, images, colors, configurations, graphics, designs, illustrations, photographs, and pictures (collectively, the "Materials") are owned by and/or licensed by DB Franchising USA, LLC and are protected by copyright, trademark, trade dress, patent, and/or other intellectual property rights and under applicable laws and foreign laws.



Know what's below.  
Call before you dig.  
Dial 811

# DUTCH BROS. COFFEE - CO0907, COLORADO SPRINGS, CO

A PORTION OF THE SOUTHWEST QUARTER OF SECTION 6 TOWNSHIP 14 SOUTH, RANGE 65 WEST OF THE 6TH PM  
CITY OF COLORADO SPRINGS, COUNTY OF EL PASO, COLORADO



### GENERAL UTILITY NOTES:

- 1. ALL STRUCTURE ELEVATIONS SHOWN ARE TO CENTER OF STRUCTURE AT FINISH SURFACE (TOP OF ASPHALT OR TOP OF CONCRETE PAVEMENT, NOT TOP OF CURB/SIDWALK) UNLESS OTHERWISE NOTED.
- 2. ALL UTILITY STRUCTURES EXPOSED TO TRAFFIC SHALL BE TRAFFIC RATED INCLUDING STRUCTURE, U/D, ETC.
- 3. ALL UTILITY STRUCTURES AND SERVICES EXPOSED TO POST-TENSIONING TRAFFIC SHALL BE SIPS RESISTANT IN ACCORDANCE WITH ACCESSIBILITY REQUIREMENTS.
- 4. PROVIDE ALL NECESSARY FITTINGS, BANDS, WELDS, TEES, COUPLERS, GASKETS, ETC. REQUIRED TO COMPLETE THE INFRASTRUCTURE DEPICTED.
- 5. ALL RENOVATING SHALL CONFORM TO THE REQUIREMENTS OF THE APPLICABLE PUMPWORK.
- 6. PROVIDE MARKING TAPE AND LOCATE WIRE WITH ALL DEPTH INSTALLATIONS.
- 7. ALL SANITARY SEWER SHALL BE PVC UNLESS DENOTED OTHERWISE. ALL PVC SEWER PIPE SHALL BE SDR-35.
- 8. ALL WATER PIPING DEVIATED AS PVC SHALL CONFORM TO ASTM D1785, SCHEDULE 40.
- 9. ALL SANITARY SEWER MUST MEET THE REQUIREMENTS OF THE CHEROKEE METROPOLITAN DISTRICT AND EL PASO COUNTY.

### ① SANITARY SEWER CONSTRUCTION NOTES:

- 1. POINT OF CONNECTION: CONNECT TO EXISTING SANITARY SEWER PER CHEROKEE METROPOLITAN DISTRICT SANITARY SEWER DISTRICT STANDARDS AND SECTION 11/SH/12 SANITARY SEWER CLEANOUT PER DETAIL 11/SH/12.
- 2. INSTALL 50-GALLON GRATE INTERCEPTOR AND SAMPLING MANHOLE PER CHEROKEE METROPOLITAN DISTRICT SANITARY SEWER DISTRICT STANDARDS. INVERT AND RIM ELEVATIONS AS NOTED IN THE SANITARY SEWER STRUCTURE TABLE. REFER TO ARCHITECTURAL AND PUMPING PLANS FOR ADDITIONAL INFORMATION.
- 3. PROVIDE VENT LINE; REFER TO ALL PUMPING PLANS FOR ADDITIONAL INFORMATION.
- 4. INSTALL SANITARY SEWER CLEANOUT PER DETAIL 11/SH/12. DIA: 6", RIM AND INVERT ELEVATIONS AS NOTED IN THE STRUCTURE TABLE.
- 5. APPROXIMATE LOCATION OF CONNECTION TO BUILDING. INSTALL 6" SANITARY SEWER CLEANOUT PER DETAIL 11/SH/12. CONTRACTOR SHALL VERIFY FINAL INVERT, HORIZONTAL, VERTICAL LOCATION, AND SIZE WITH PUMPING PLANS PRIOR TO CONSTRUCTION.
- 6. INSTALL SEWER LATERAL; PIPE SIZE, MATERIAL, LENGTH, AND SLOPE PER PLANS.
- 7. INSTALL EXISTING 1" WATER METER PER CHEROKEE METROPOLITAN DISTRICT STANDARDS AND EL PASO COUNTY SPECIFICATIONS. PORTHOLE TO VERIFY MATERIAL, SIZE, AND DEPTH PRIOR TO CONSTRUCTION.
- 8. SANITARY SEWER STRUCTURE
- 9. SANITARY SEWER TABLE

### ② WATER CONSTRUCTION NOTES:

- 1. APPROXIMATE LOCATION OF EXISTING TRANSFORMER. CONTRACTOR SHALL COORDINATE SCOPE OF WORK WITH MEP PLANS AND PUMPWORK PRIOR TO CONSTRUCTION.
- 2. APPROXIMATE LOCATION OF POWER CONNECTION TO BUILDING. REFER TO ELECTRICAL PLANS FOR FINAL LOCATION. CONTRACTOR SHALL INSTALL THE (2) (2) CONDUITS WITH PULL TAPE FOR INSTALLATION. ALL LOCATION CHANGES MUST INCORPORATE A MINIMUM 3" RADIIUS SWEEP. CONTRACTOR TO COORDINATE SCOPE OF WORK WITH MEP PLANS AND PUMPWORK PRIOR TO CONSTRUCTION.
- 3. APPROXIMATE LOCATION OF UNDERGROUND DATA/COMM/TELE SERVICE LINE. CONTRACTOR SHALL INSTALL ONE (1) 4" CONDUIT WITH PULL TAPE FOR DATA/COMM/TELEPHONE SERVICE. CONNECT TO EXISTING PRIOR TO CONSTRUCTION.
- 4. APPROXIMATE LOCATION OF DATA/COMM/TELE CONNECTION TO BUILDING. REFER TO MEP PLANS FOR FINAL LOCATION.
- 5. CONNECT TO EXISTING DATA/COMM/TELE SERVICE. CONTRACTOR SHALL COORDINATE SCOPE OF WORK WITH MEP PLANS AND PUMPWORK PRIOR TO CONSTRUCTION.
- 6. CONNECT TO EXISTING POWER. CONTRACTOR TO COORDINATE SCOPE OF WORK WITH MEP PLANS AND PUMPWORK PRIOR TO CONSTRUCTION.

### ③ DRY UTILITIES NOTES:

- 1. APPROXIMATE LOCATION OF EXISTING GAS SERVICE LINE. CONTRACTOR SHALL INSTALL THE (2) (2) CONDUITS WITH PULL TAPE FOR INSTALLATION. ALL LOCATION CHANGES MUST INCORPORATE A MINIMUM 3" RADIIUS SWEEP. CONTRACTOR TO COORDINATE SCOPE OF WORK WITH MEP PLANS AND PUMPWORK PRIOR TO CONSTRUCTION.
- 2. APPROXIMATE LOCATION OF UNDERGROUND DATA/COMM/TELE SERVICE LINE. CONTRACTOR SHALL INSTALL ONE (1) 4" CONDUIT WITH PULL TAPE FOR DATA/COMM/TELEPHONE SERVICE. CONNECT TO EXISTING PRIOR TO CONSTRUCTION.
- 3. APPROXIMATE LOCATION OF DATA/COMM/TELE CONNECTION TO BUILDING. REFER TO MEP PLANS FOR FINAL LOCATION.
- 4. APPROXIMATE LOCATION OF DATA/COMM/TELE CONNECTION TO BUILDING. REFER TO MEP PLANS FOR FINAL LOCATION.
- 5. CONNECT TO EXISTING DATA/COMM/TELE SERVICE. CONTRACTOR SHALL COORDINATE SCOPE OF WORK WITH MEP PLANS AND PUMPWORK PRIOR TO CONSTRUCTION.
- 6. CONNECT TO EXISTING POWER. CONTRACTOR TO COORDINATE SCOPE OF WORK WITH MEP PLANS AND PUMPWORK PRIOR TO CONSTRUCTION.

### UTILITY CROSSING TABLE

NO.	BOTTOM UTILITY	TOP UTILITY	INVERT	CLEAR
1	DOMESTIC WATER	66291.20	66293.00	2.0"
2	SEWER	66292.78	66293.80	1.0"
3	SEWER	66292.61	66293.80	1.2"
4	EX. STORM DRAIN	66290.87	66292.51	1.7"
5	EX. STORM DRAIN	66290.77	66292.35	1.7"
6	EX. STORM DRAIN	66290.37	66291.53	1.3"
7	SEWER	66291.94	66292.97	±1.0"
8	SEWER	66291.86	66292.97	±1.0"

NOTE: APPROXIMATE ELEVATION. CONTRACTOR TO VERIFY WITH UTILITY PORTHOLES.

### UTILITY PROTECTION NOTE:

APPROXIMATE LOCATION OF EXISTING GAS SERVICE IS SHOWN ON THESE PLANS. CONTRACTOR SHALL COORDINATE WITH ALL APPLICABLE AGENCIES TO COORDINATE POINTS OF CONNECTIONS AND ROUTING. ON-SITE UTILITY LAYOUT MAY SHIFT AND OR BE RELOCATED ACCORDINGLY DURING CONSTRUCTION.

### UTILITY COORDINATION NOTE:

ALL POWER, AND DATA/COMMUNICATIONS/TELEPHONE CONNECTIONS AND SERVICES COORDINATION IS ON GOING. WE ARE CURRENTLY WORKING WITH ALL APPLICABLE AGENCIES TO COORDINATE POINTS OF CONNECTIONS AND ROUTING. ON-SITE UTILITY LAYOUT MAY SHIFT AND OR BE RELOCATED ACCORDINGLY DURING CONSTRUCTION.

### UTILITY CONFLICT NOTE:

THE CONTRACTOR SHALL BE RESPONSIBLE FOR VERIFYING THE LOCATION, DIMENSION, AND DEPTH OF ALL EXISTING UTILITIES WHETHER SHOWN ON THESE PLANS OR NOT BY PRIOR TO CONSTRUCTION. THIS SHALL INCLUDE CALLING UTILITIES LOCATE & MARK AND VERIFYING THE UTILITIES AND SURVEYING THE SCHEDULED CONSTRUCTION AREA. CROSSINGS TO PHYSICALLY VERIFY WHETHER OR NOT CONDUITS EXIST. LOCATIONS OF CONDUITS IS SHOWN ON THESE PLANS AND ARE SUBJECT TO CHANGE. THE SCHEDULED PUBLIC CONTRACTOR SHALL NOTIFY BARGHAUSEN CONSULTING ENGINEERS, INC. TO RESOLVE ALL PROBLEMS PRIOR TO PROCEEDING WITH CONSTRUCTION.

### UTILITY POTHOLING NOTE:

THE LOCATED LOCATIONS ARE REQUIRED TO BE POTHOLED TO VERIFY VERTICAL SEPARATION BETWEEN UTILITIES AS REQUIRED BY EL PASO COUNTY SPECIFICATIONS. CONTRACTOR SHALL NOTIFY BARGHAUSEN CONSULTING ENGINEERS, INC. OF ANY DISCREPANCIES.

### UTILITY PROTECTION NOTE:

APPROXIMATE LOCATION OF EXISTING GAS SERVICE IS SHOWN ON THESE PLANS. CONTRACTOR SHALL COORDINATE WITH ALL APPLICABLE AGENCIES TO COORDINATE POINTS OF CONNECTIONS AND ROUTING. ON-SITE UTILITY LAYOUT MAY SHIFT AND OR BE RELOCATED ACCORDINGLY DURING CONSTRUCTION.

### UTILITY CROSSING NOTE:

SEPARATION BETWEEN UTILITIES AS REQUIRED BY EL PASO COUNTY SPECIFICATIONS. CONTRACTOR SHALL NOTIFY BARGHAUSEN CONSULTING ENGINEERS, INC. OF ANY DISCREPANCIES.

### UTILITY PROTECTION NOTE:

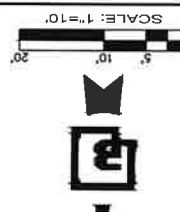
APPROXIMATE LOCATION OF EXISTING GAS SERVICE IS SHOWN ON THESE PLANS. CONTRACTOR SHALL COORDINATE WITH ALL APPLICABLE AGENCIES TO COORDINATE POINTS OF CONNECTIONS AND ROUTING. ON-SITE UTILITY LAYOUT MAY SHIFT AND OR BE RELOCATED ACCORDINGLY DURING CONSTRUCTION.

### UTILITY COORDINATION NOTE:

ALL POWER, AND DATA/COMMUNICATIONS/TELEPHONE CONNECTIONS AND SERVICES COORDINATION IS ON GOING. WE ARE CURRENTLY WORKING WITH ALL APPLICABLE AGENCIES TO COORDINATE POINTS OF CONNECTIONS AND ROUTING. ON-SITE UTILITY LAYOUT MAY SHIFT AND OR BE RELOCATED ACCORDINGLY DURING CONSTRUCTION.

### UTILITY CONFLICT NOTE:

THE CONTRACTOR SHALL BE RESPONSIBLE FOR VERIFYING THE LOCATION, DIMENSION, AND DEPTH OF ALL EXISTING UTILITIES WHETHER SHOWN ON THESE PLANS OR NOT BY PRIOR TO CONSTRUCTION. THIS SHALL INCLUDE CALLING UTILITIES LOCATE & MARK AND VERIFYING THE UTILITIES AND SURVEYING THE SCHEDULED CONSTRUCTION AREA. CROSSINGS TO PHYSICALLY VERIFY WHETHER OR NOT CONDUITS EXIST. LOCATIONS OF CONDUITS IS SHOWN ON THESE PLANS AND ARE SUBJECT TO CHANGE. THE SCHEDULED PUBLIC CONTRACTOR SHALL NOTIFY BARGHAUSEN CONSULTING ENGINEERS, INC. TO RESOLVE ALL PROBLEMS PRIOR TO PROCEEDING WITH CONSTRUCTION.



Job Number: 23098  
Sheet: 11  
Scale: Horizontal 1" = 10', Vertical N/A  
Designed: ELM, Checked: ELM, Date: 02/08/24  
Dutch Bros. Engineering, Inc.  
5810 OMAHA BLVD, COLORADO SPRINGS, CO 80915  
Title: UTILITY PLAN  
Revision: No. Date By: Cdd: Aoot

P:\23098\2309898\engineering\CD\23098-Utility 4/5/2024 8:50 PM ELM:CEL