

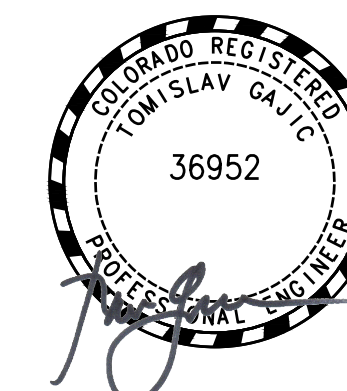
The name DUTCH BROS. and all associated logos, distinctive designs, content, information, and other materials featured, displayed, contained herein, and made available by Dutch Bros., including but not limited to, the "hook and feet" of the establishments and products, all text, images, colors, configurations, graphics, designs, illustrations, photographs, and pictures (collectively, the "Materials") are owned by and/or licensed by DB Franchising USA, LLC and are protected by copyright, trademark, trade dress, patent, and/or other intellectual property rights and unfair competition laws under the United States and foreign laws.



**ARMÉT DAVIS NEWLOVE & ASSOCIATES, AIA ARCHITECTS**

1330 OLYMPIC BLVD.  
SANTA MONICA, CALIFORNIA 90404  
PH 310 452-5533 FAX 310 450-4742

THE USE OF THESE PLANS AND SPECIFICATIONS SHALL BE RESTRICTED TO THE ORIGINAL SITE FOR WHICH THEY WERE PREPARED AND PUBLICATION THEREOF IS EXPRESSLY LIMITED TO SUCH USE. RE-USE, REPRODUCTION OR PUBLICATION BY ANY METHOD, IN WHOLE OR IN PART, IS PROHIBITED. TITLE TO THE PLANS AND SPECIFICATIONS REMAINS WITH THE ARCHITECT WITHOUT PREJUDICE. VISUAL CONTACT WITH THESE PLANS AND SPECIFICATIONS SHALL CONSTITUTE FRAUD. EVIDENCE OF THE ACCEPTANCE OF THE RESTRICTIONS.



**Project No: CO0907**  
Dutch Bros Coffee - New Freestanding Store  
DB2550-A2  
5810 OMAHA BLVD.  
COLORADO SPRINGS, CO 80915

**ACIES ENGINEERING**  
400 N. McCarthy Blvd., Suite 250  
Milpitas CA, 95035  
ph: (408) 922-5255 | fr: (408) 922-5260  
info@acies.net | Copyright © 2023

DATE: 03/08/2024  
REV: DATE: DESCRIPTION:

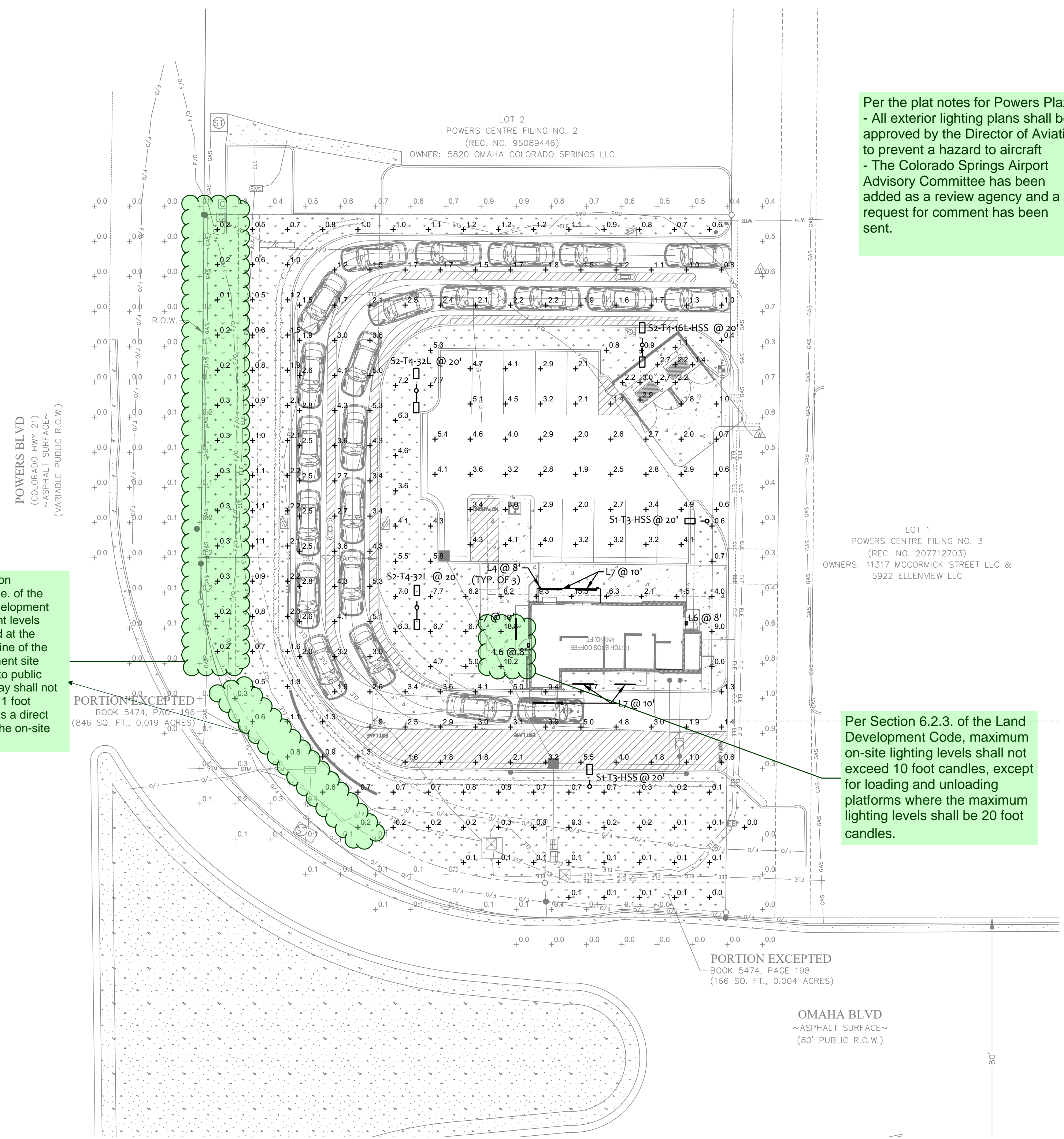
SHEET NAME:

PHOTOMETRIC SITE PLAN

SHEET NUMBER:

**E0.02**

© 2024 DB Franchising USA, LLC



Per the plat notes for Powers Plaza:  
- All exterior lighting plans shall be approved by the Director of Aviation to prevent a hazard to aircraft  
- The Colorado Springs Airport Advisory Committee has been added as a review agency and a request for comment has been sent.

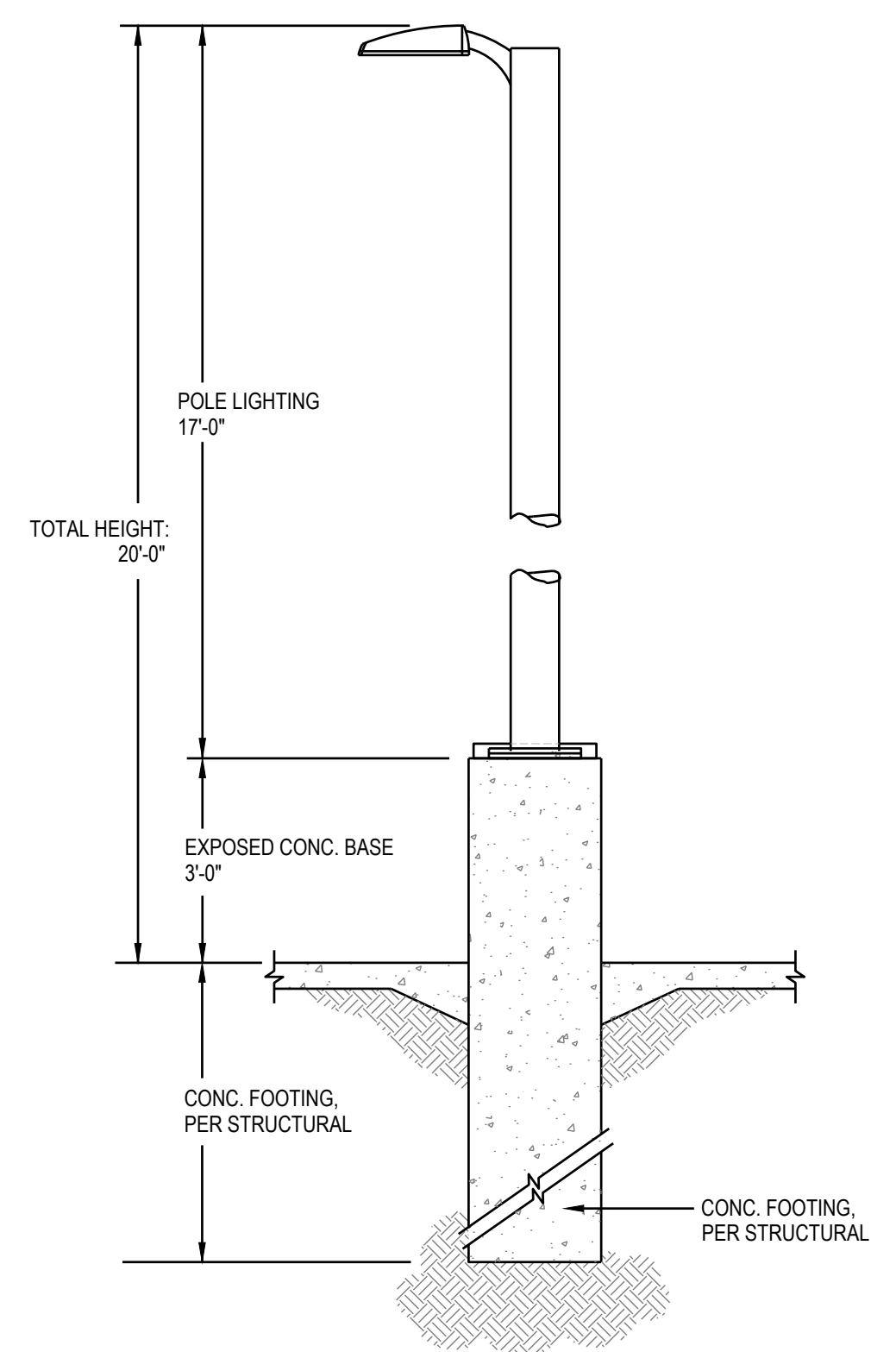
Per Section 6.2.3.B.1.e. of the Land Development Code, light levels measured at the property line of the development site adjacent to public right of way shall not exceed 0.1 foot candles as a direct result of the on-site lighting.

Per Section 6.2.3. of the Land Development Code, maximum on-site lighting levels shall not exceed 10 foot candles, except for loading and unloading platforms where the maximum lighting levels shall be 20 foot candles.

**1 PHOTOMETRIC SITE PLAN**  
SCALE: 1/20" = 1'-0"  
NORTH

Symbol	Label	Quantity	Manufacturer	Catalog Number / BUG Rating	Description	Filename	Lumens Per Lamp	Light Loss Factor	Wattage
□	L4	3	LIGMAN	UMT-31416-DBNA-1414W-N-W40 UNDER CANOPY	EXTERIOR LIGHT SCONCE, 3" SQUARE, UP/DOWN 4000K, WET LOCATION	MT-31416-N-N-W40.IES	1100	0.82	28.6
□	L6	2	RAB LIGHTING INC.	WPLED26Y-WPLED26Y/D10 UNDER CANOPY	CAST FINNED METAL HOUSING, MOLDED PLASTIC REFLECTOR WITH SEMI-SPECULAR FINISH	rab02623.ies	3295	0.82	29.7
	L7	4	Self	CROWN-70-40K-110-S-SSP UNDER CANOPY	CROWN-144-27TV 840_BA110	CROWN-144-27TV-840_BA110_IESNA2002.ies	6300	0.8	60
□	S1-T3-HSS	2	NLS Lighting LLC	NV-1-T3-32L-1-30K-UNV-HSS B0-U0-G2	NV Series Area Lighting Fixture	NV-1-T3-32L-1-30K-HSS.IES	6682	0.91	106
□	S2-T4-16L-HSS	2	NLS Lighting LLC	NV-1-T4-16L-1-30K-UNV-HSS B0-U0-G1	NV Series Area Lighting Fixture	NV-1-T4-16L-1-30K-HSS.IES	3473	0.91	112
□	S2-T4-32L	1	NLS Lighting LLC	NV-1-T4-32L-1-30K-UNV B2-U0-G2	NV Series Area Lighting Fixture	NV-1-T4-32L-1-30K.IES	11816	0.91	211

Description	Symbol	AVG	MAX	MIN	MAX/MIN	AVG/MIN
Drive-thru	+	2.9 FC	14.7 FC	0.4 FC	36.8:1	7.3:1
Hardscape	+	3.3 FC	18.8 FC	0.0 FC	N/A	N/A
Parking	+	3.0 FC	5.4 FC	0.6 FC	9.0:1	5.0:1
Trash Enclosure	+	2.3 FC	3.0 FC	1.1 FC	2.7:1	2.1:1
Outside PL	+	0.2 FC	1.0 FC	0.0 FC	N/A	N/A



**POLE BASE DETAIL**  
SCALE: N.T.S.

PROVIDE A CONCRETE CHRISTY BOX WITH TRAFFIC RATED COVER BY EACH LIGHT POLES FOR THE INTERFACE OF CONDUITS

**NOTE:**  
REFER TO STRUCTURAL/ARCHITECTURAL DETAIL FOR ADDITIONAL REQUIREMENT.

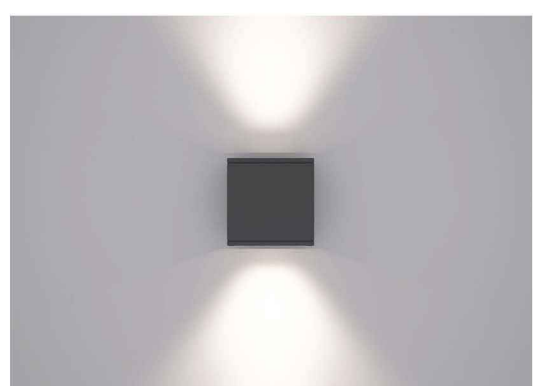
Please include:  
File Number PPR2413



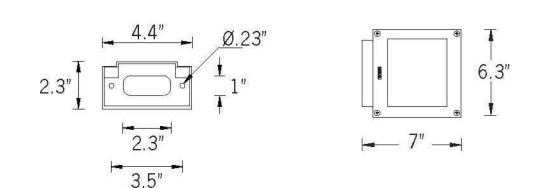
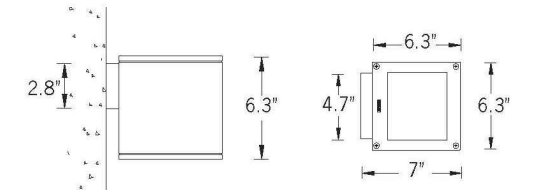
The name DUTCH BROS. and all associated logos, distinctive designs, content, information, and other materials featured, displayed, contained herein, and made available by Dutch Bros., including but not limited to, the "flock and feel" of the establishments and products, all text, images, colors, configurations, graphics, designs, illustrations, photographs, and pictures (collectively, the "Materials") are owned by and/or licensed by DB Franchising USA, LLC and are protected by copyright, trademark, trade dress, patent, and/or other intellectual property rights and unfair competition laws under the United States and foreign laws.

## UMT-31416-DBNA Matrix 3 Surface

7144 NE Progress Ct Hillsboro, Oregon 97124  
T: 503.645.0500 F: 503.645.8100  
www.ligmanlightingusa.com



Length - 7" | Height - 6.3" | Weight: 4.8 lbs  
IP65 - Suitable For Wet Locations  
IK04 - Impact Resistant (Vandal Resistant)



### Mounting Detail

### Matrix Product Family



### Construction

**Aluminum**  
Less than 0.1% copper content - Marine Grade 6060 extruded & LM5 Aluminum High Pressure die casting provides excellent mechanical strength, clean detailed product lines and excellent heat dissipation.

**Pre-paint**  
8 step de-grease and phosphate process that includes deoxidizing and etching as well as a zinc and nickel phosphate process before product painting.

**Memory Retentive - Silicon Gasket**  
Provided with special injection molded "fit for purpose" long life high temperature memory retentive silicon gaskets. Maintains the gaskets exact profile and seal over years of use and compression.

**Thermal management**  
LM5 Aluminum is used for its excellent mechanical strength and thermal dissipation properties in low and high ambient temperatures. The superior thermal heat sink design by Ligman used in conjunction with the driver, controls thermal below critical temperature range to ensure maximum luminous flux output, as well as providing long LED service life and ensuring less than 10% lumen depreciation at 50,000 hours.

**Surge Suppression**  
Standard 10kV surge suppressor provided with all fixtures.

### BUG Rating

B1 - US - C0

**Finishing**  
All Ligman products go through an extensive finishing process that includes letting to improve paint adherence.

**Paint**  
UV Stabilized 4.9MIL thick powder coat paint and baked at 200 Deg C. This process ensures that Ligman products can withstand harsh environments. Rated for use in natoriums.

**Hardware**  
Provided Hardware is Marine grade 316 Stainless steel.

**Anti Seize Screw Holes**  
Tapped holes are infused with a special anti seize compound designed to prevent seizure of threaded connections, due to electrolysis from heat, corrosive atmospheres and moisture.

**Crystal Clear Low Iron Glass Lens**  
Provided with tempered, impact resistant crystal clear low iron glass ensuring no green glass tinge.

**Optics & LED**  
Precision optic design provides exceptional light control and precise distribution of light. LED CRI > 80

**Lumen - Maintenance Life**  
L80 (B10) at 50,000 hours (This means that at least 90% of the LED still achieve 80% of their original flux)

### Square surface wall-mounted architectural lighting range. Family of lighting effects sanctioning imagination and inspiration to reign in designs.

A small profile wall mounted compact cubic luminaire with up and downward light distributions. The Matrix is designed with five light distribution options, namely narrow, medium, wide, very wide and spike.

The Matrix uses high efficiency, long life LEDs and is designed to illuminate the wall and surfaces in front of the wall, as well as light accents on vertical and horizontal surfaces. The Matrix is suitable for indoor and outdoor applications.

This luminaire is available with decorative spikes and can be used with various combinations of light distribution optics.

This luminaire can be mounted at different angles to produce interesting decorative lighting effects on the side of the building facade. The standard Matrix is designed to mount over a 3" octagonal J-box, a 4" J-box cover plate is available upon request.



## UMT-31416-DBNA Matrix 3 Surface

7144 NE Progress Ct Hillsboro, Oregon 97124  
T: 503.645.0500 F: 503.645.8100  
www.ligmanlightingusa.com



PROJECT	DATE
QUANTITY	TYPE
NOTE	

ORDERING EXAMPLE || UMT - 31416 - 14/14w - W30 - 02 - 120/277v - Options

LAMP	BEAM	LED COLOR	FINISH COLOR	VOLTAGE
1/4" Hw COB 1128 Lumens Down 1128 Lumens Up	N - Narrow 20" M - Medium 25" W - Wide 36" VW - Very Wide 74"	W27 - 2700K W30 - 3000K W35 - 3500K W40 - 4000K	01 - BLACK RAL 9003 02 - DARK GREY RAL 7043 03 - WHITE RAL 9003 04 - METALLIC SILVER RAL 9006 05 - MATTE SILVER RAL 9006 06 - LIGMAN BRONZE 07 - CUSTOM RAL	120/277v Other - Specify

ADDITIONAL OPTIONS
--------------------

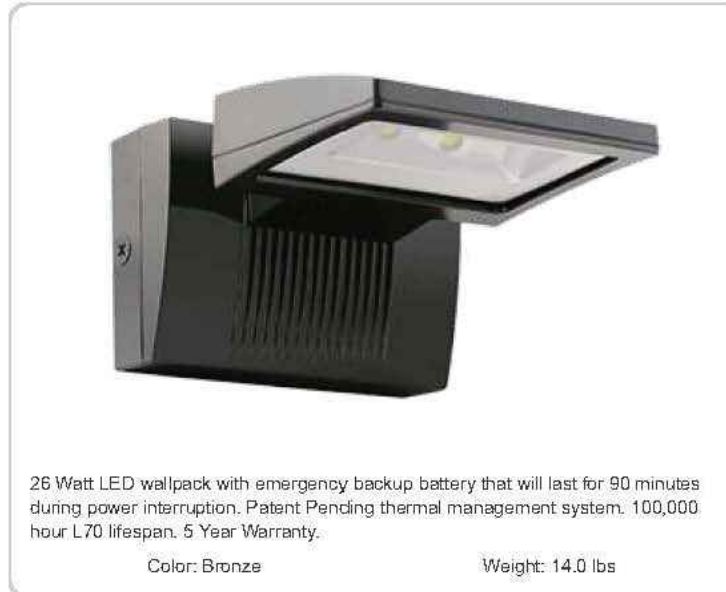
NAT - Natrium Rated  
F - Frosted Lens  
43 - Mounting Plate for 4" Junction Box  
DIM - 0-10v Dimming

COLORED DICHROIC FILTERS  
RD - Red Lens  
BL - Blue Lens  
GR - Green Lens  
AM - Amber Lens  
(Specify Other Color)

Job: Dutch Brothers Coffee Prototype  
Descr: Exterior Wallpack

### WPLED26Y/E

### RAB



26 Watt LED wallpack with emergency backup battery that will last for 90 minutes during power interruption. Patent Pending thermal management system, 100,000 hour L70 lifespan, 5 Year Warranty.  
Color: Bronze Weight: 14.0 lbs

Project:	Type:
Prepared By:	Date:
<b>Driver Info</b>	<b>LED Info</b>
Type: 120v	Constant Current: 26W
208v:	0.25A
240v:	0.15A
277v:	0.14A
Input Watts: 26W	Color Temp: 3000K
Efficiency: 89%	Color Accuracy: 71 CRI
	L70 Lifespan: 100000
	Lumens: 3296
	Efficiency: 112 LPW

### Technical Specifications

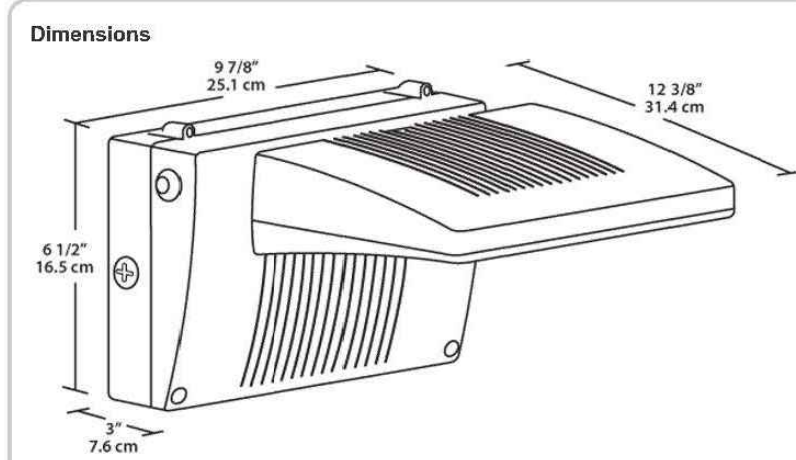
<b>Other</b>	<b>LED Characteristics</b>	<b>Battery Backup</b>
<b>Battery Backup:</b> Minimum starting temperature is 0°C/32°F.	<b>Lifespan:</b> 100,000-hour LED lifespan based on IES LM-80 results and TM-21 calculations.	<b>Backup Battery:</b> Two fast-rechargeable, high-temperature, maintenance-free, nickel-cadmium batteries.
<b>Patents:</b> The WPLED design is protected by U.S. Patent D534878 and Patents pending in the U.S., Canada, China, Taiwan and Mexico.	<b>LED:</b> Two (2) 13W high-output, long-life LEDs.	<b>Construction</b>
<b>Equivalency:</b> Equivalent to 175W Metal Halide.	<b>Color Consistency:</b> 3-step MacAdam Ellipse binning to achieve consistent future-to-future color.	<b>Ambient Temperature:</b> Suitable for use in 35°C (95°F) ambient temperatures.
<b>FTC Country of Origin:</b> This product was assembled in the USA by RAB using imported components.	<b>Color Stability:</b> LED color temperature is warranted to shift no more than 200K in CCT over a 5 year period.	<b>Gaskets:</b> High temperature silicone.
<b>Buy American Act Compliance:</b> This product complies with the Buy American Act.	<b>Color Uniformity:</b> RAB's range of CCT (Correlated Color Temperature) follows the guidelines of the American National Standard for Specifications for the Chromaticity of Solid State Lighting (SSL) Products, ANSI C78.377-2017.	<b>Housing:</b> Precision die-cast aluminum housing, lens frame and mounting arm.
<b>Listings</b> This product is on the Design Lights Consortium (DLC) Qualified Products List and is eligible for rebates from DLC Member Utilities. DLC Product Code: P00001750	<b>Electrical</b>	<b>Finish:</b> Formulated for high-durability and long lasting color.
<b>UL Listing:</b> Suitable for Wet Locations as downlight, Wall Mount, Only, Battery Backup UL 524 Listed Emergency Lighting Power Supply.	<b>Battery Mode:</b> Light output use LLD of 76 to simulate light output during battery mode operation.	<b>Green Technology:</b> Mercury and UV free, RoHS compliant components. Polyester powder coat finish formulated without the use of VOC or toxic heavy metals.
	<b>Driver:</b> Constant Current, Class 2, 50/60 Hz, 120 - 277VAC, 0.4 Amps.	<b>Optical</b>
		<b>BUG Rating:</b> B1 U0 C0

Need help? Tech help line: (888) RAB-1000 Email: sales@rabweb.com Website: www.rabweb.com  
Copyright © 2018 RAB Lighting, Inc. All Rights Reserved. Note: Specifications are subject to change at any time without notice.

Page 2 of 2

### WPLED26Y/E

### RAB



**Features**  
Backup battery UL 524 listed  
UL listed for wet locations  
90 minutes illumination time during power interruption  
Includes test switch and charge indicator light  
Universal input voltage  
5-year warranty

Family	Wattage	Color Temp	Finish	Battery Backup	Photocell
WPLED	26 = 26W	Blank = 3000K (Warm) Y = 3000K (Warm) N = 4000K (Neutral)	Blank = Bronze W = White	/E = Battery Backup /EB = Cost Saver Battery Backup	Blank = No Photocell /PC = 120V Baller /PCS = 120V Sidel /PC2 = 277V Sidel

Verify required

Need help? Tech help line: (888) RAB-1000 Email: sales@rabweb.com Website: www.rabweb.com  
Copyright © 2018 RAB Lighting, Inc. All Rights Reserved. Note: Specifications are subject to change at any time without notice.

Page 2 of 2



ARMÉT DAVIS NEWLOVE & ASSOCIATES, AIA ARCHITECTS

1330 OLYMPIC BLVD.  
SANTA MONICA, CALIFORNIA 90404  
PH 310 452-5533 FAX 310 450-4742

THE USE OF THESE PLANS AND SPECIFICATIONS SHALL BE RESTRICTED TO THE ORIGINAL SITE FOR WHICH THEY WERE PREPARED AND PUBLICATION THEREOF IS EXPRESSLY LIMITED TO SUCH USE. RE-USE, REPRODUCTION OR PUBLICATION BY ANY METHOD, IN WHOLE OR IN PART, IS PROHIBITED. TITLE TO THE PLANS AND SPECIFICATIONS REMAINS WITH THE ARCHITECT WITHOUT PREJUDICE. VISUAL CONTACT WITH THESE PLANS AND SPECIFICATIONS SHALL CONSTITUTE FRAUD. MAKE EVIDENCE OF THE ACCEPTANCE OF THE RESTRICTIONS.



Project No: CO0907  
Dutch Bros Coffee - New Freestanding Store  
DB2550-A2  
5810 OMAHA BLVD.  
COLORADO SPRINGS, CO 80915

ACIES  
ENGINEERING  
400 N. McCarthy Blvd., Suite 250  
Maitland, CA, 95035  
ph: (408) 622-5255 | fx: (408) 622-5260  
info@acies.net | Copyright © 2023

DATE: 03/08/2024  
REV: DATE: DESCRIPTION:

SHEET NAME:

EXTERIOR LIGHTING  
CUTSHEETS

SHEET NUMBER:

E0.04

© 2024 DB Franchising USA, LLC

The name DUTCH BROS. and all associated logos, distinctive designs, content, information, and other materials featured, displayed, contained herein, and made available by Dutch Bros., including but not limited to, the "hick and feel" of the establishments and products, all text, images, colors, configurations, graphics, designs, illustrations, photographs, and pictures (collectively, the "Materials") are owned by and/or licensed by DB Franchising USA, LLC and are protected by copyright, trademark, trade dress, patent, and/or other intellectual property rights and unfair competition laws under the United States and foreign laws.

**L7**

Job: Dutch Brothers Coffee  
 Descr: Canopy 6' light

### Outdoor Cove Lighting CROWN

- Quick connection
- Dimmable, 1-10V dimming to 10%-100%
- Linkable, max. linkable length: 72' @ 120VAC, 156' @ 277VAC
- IP rating: IP66 (for wet locations)
- Lockable, precision aiming adjustment: ±82.5° vertical rotation
- Lifetime: 50,000hrs (L90@35°C)
- Temp: -13°F to 122°F (-23°C to 50°C)
- Material: Aluminum alloy
- 10W/ft, 1050lm/ft

Dimensions: (Inches/mm)

1-3/4" (44.3)
2-1/4" (58.8)

Wiring Diagram

AC connection:

Black: " L "

White: " N "

Yellow/green: " ⚡ "

Dimming connection:

Violet: " + "

Gray: " - "

83
www.self-electronics.com

### Outdoor Cove Lighting CROWN

How to order using our catalog numbers:  
Example: CROWN-1230K110SS

Series	Length	Color Temp	Beam Angle	Finish	Installation
CROWN	12 - 11.8"(300mm) 47 - 47"(1190mm) 70 - 70"(1778mm)	30K - 3000K 40K - 4000K	110 - 110°	S - Silver	S - Screw Mounting

Catalog No.	Model	Description					Included
		Rated Input	Ra	Wattage	Luminous Flux (TYP@4000K)		
CROWN-1230K110SS	CROWN-L24-277V	120-277VAC	85	10W	1050 lm	1pc LED fixture 3pcs Screws 1pc End cap	
CROWN-1240K110SS	CROWN-L24-277V	120-277VAC	85	10W	1050 lm		
CROWN-4730K110SS	CROWN-L90-277V	120-277VAC	85	40W	4200 lm		
CROWN-4740K110SS	CROWN-L90-277V	120-277VAC	85	40W	4200 lm		
CROWN-7030K110SS	CROWN-L144-277V	120-277VAC	85	60W	6300 lm		

How to choose your driver & cables:

Catalog No.	Description	Photo
IC-CROWN-59	Input cable 59"	

Optional:

Catalog No.	Description	Photo
SC-CROWN-12	Soft connector 12"	
TK-CROWN-79	Track 79", including 3pcs screws	

www.self-electronics.com
84

### Outdoor Cove Lighting CROWN

Installation

Screws installation

Track installation

85
www.self-electronics.com



1330 OLYMPIC BLVD.  
SANTA MONICA, CALIFORNIA 90404  
PH 310 452-5533 FAX 310 450-4742

THE USE OF THESE PLANS AND SPECIFICATIONS SHALL BE RESTRICTED TO THE ORIGINAL SITE FOR WHICH THEY WERE PREPARED AND PUBLICATION THEREOF IS EXPRESSLY LIMITED TO SUCH USE. RE-USE, REPRODUCTION OR PUBLICATION BY ANY METHOD, IN WHOLE OR IN PART, IS PROHIBITED. TITLE TO THE PLANS AND SPECIFICATIONS REMAINS WITH THE ARCHITECT WITHOUT PREJUDICE. VISUAL CONTACT WITH THESE PLANS AND SPECIFICATIONS SHALL CONSTITUTE FRAUD. TRACE EVIDENCE OF THE ACCEPTANCE OF THE RESTRICTIONS.



Project No: CO0907  
 Dutch Bros Coffee - New Freestanding Store  
 DB2550-A2  
 5810 OMAHA BLVD.  
 COLORADO SPRINGS, CO 80915

**ACIES**  
ENGINEERING  
400 N. McCarthy Blvd., Suite 250  
Milpitas CA, 95035  
ph: (408) 922-9255 | fr: (408) 922-5260  
info@acies.net | Copyright © 2023

DATE: 03/08/2024  
REV: DATE: DESCRIPTION:

SHEET NAME:

EXTERIOR LIGHTING  
CUTSHEETS

SHEET NUMBER:  
**E0.05**