

SUMMARY - BUILDING SIGNS & MENUS



89975 Prairie Rd.
Eugene, OR 97402
541.485.5546 | esasigns.com

SUMMARY DRAWING:
37012

CLIENT:
Dutch Bros - CO0907
5810 Omaha Blvd.
Colorado Springs, CO

DATE OF SHOP DRAWING:
10/31/23

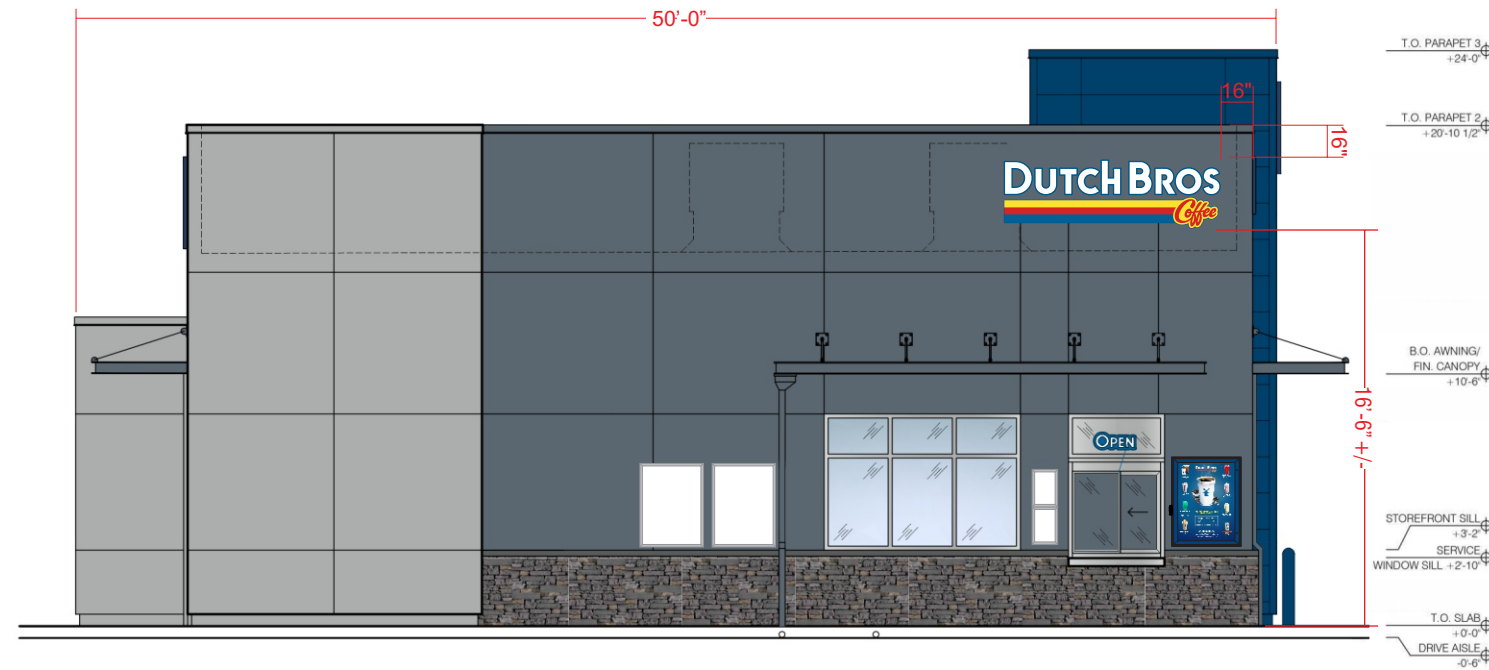
PROD. DETAILS: CH

LEAD DESIGN: CH

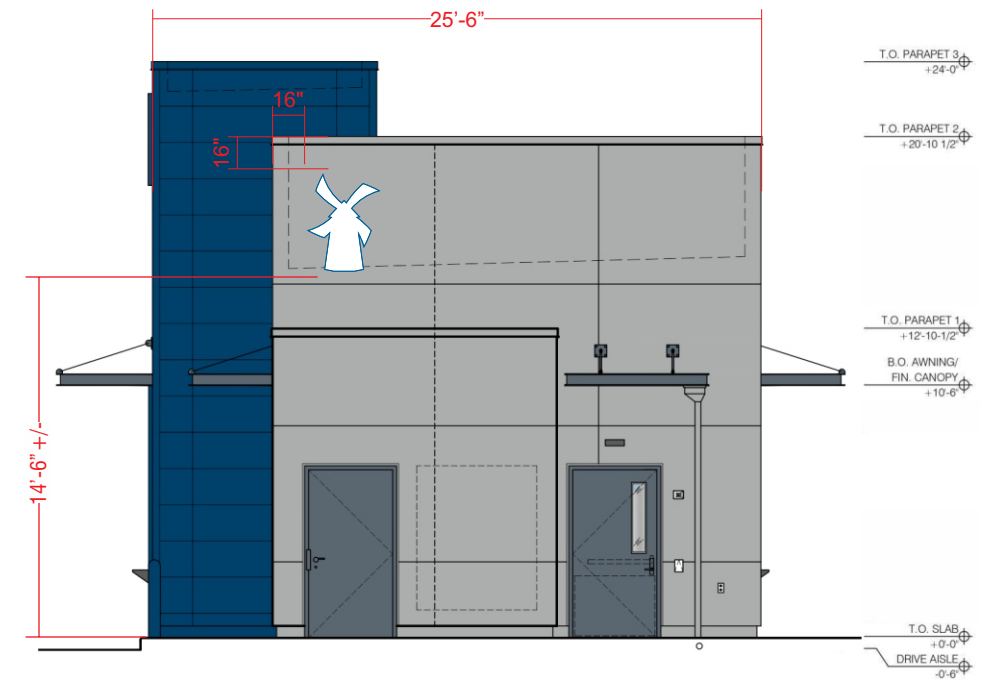
SALES: NJ

REVISIONS:

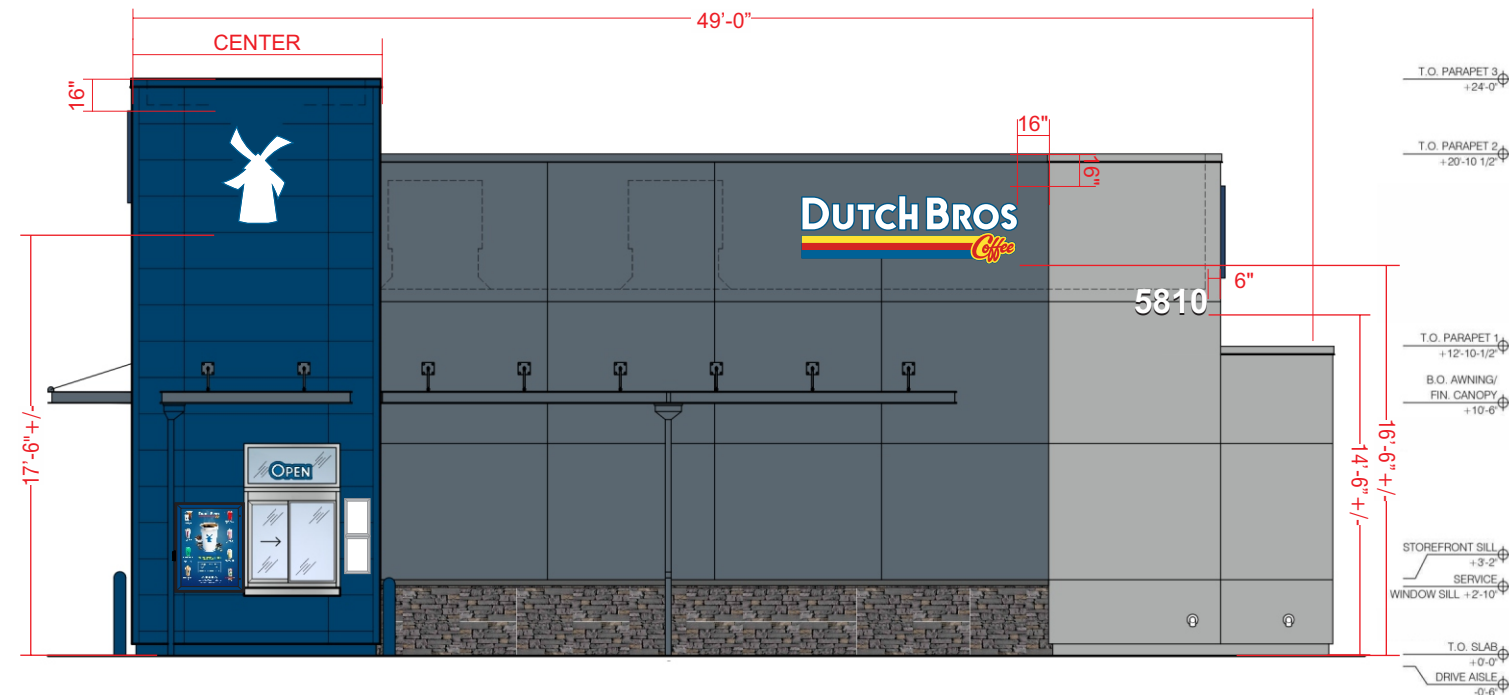
- 1.29.24 Updated site plan.
- 1.30.24 Moved address from West.
- 5.21.24 Changed building removing canopy and adding 18' awning.
- 6.11.24 Updated site plan.



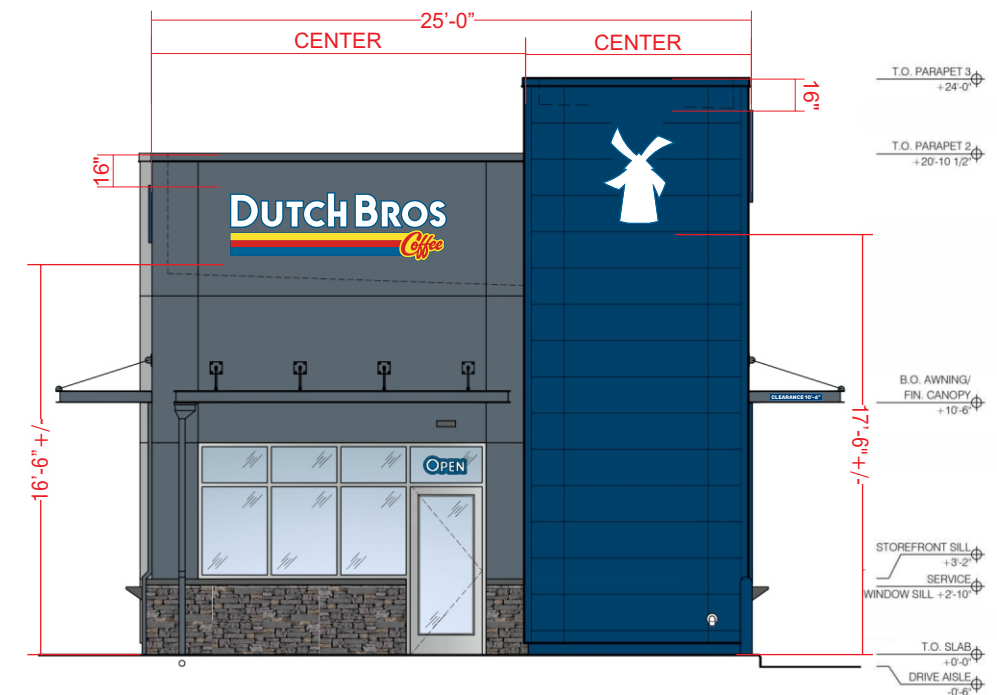
NORTH ELEVATION **DBCL9 @ 25.5 SF**
SCALE: 1/8"=1'-0"



EAST ELEVATION **DBW11 @ 12.6 SF**
SCALE: 1/8"=1'-0"



SOUTH ELEVATION **DBW11 @ 12.6 SF** **DBCL9 @ 25.5 SF**
SCALE: 1/8"=1'-0"



WEST ELEVATION **DBCL9 @ 25.5 SF** **DBW11 @ 12.6 SF**
SCALE: 1/8"=1'-0"

SUMMARY - FREESTANDING SIGNS & MENUS



89975 Prairie Rd.
Eugene, OR 97402
541.485.5546 | esasigns.com

SUMMARY DRAWING:
37012

CLIENT:
Dutch Bros - CO0907
5810 Omaha Blvd.
Colorado Springs, CO

DATE OF SHOP DRAWING:
10/31/23

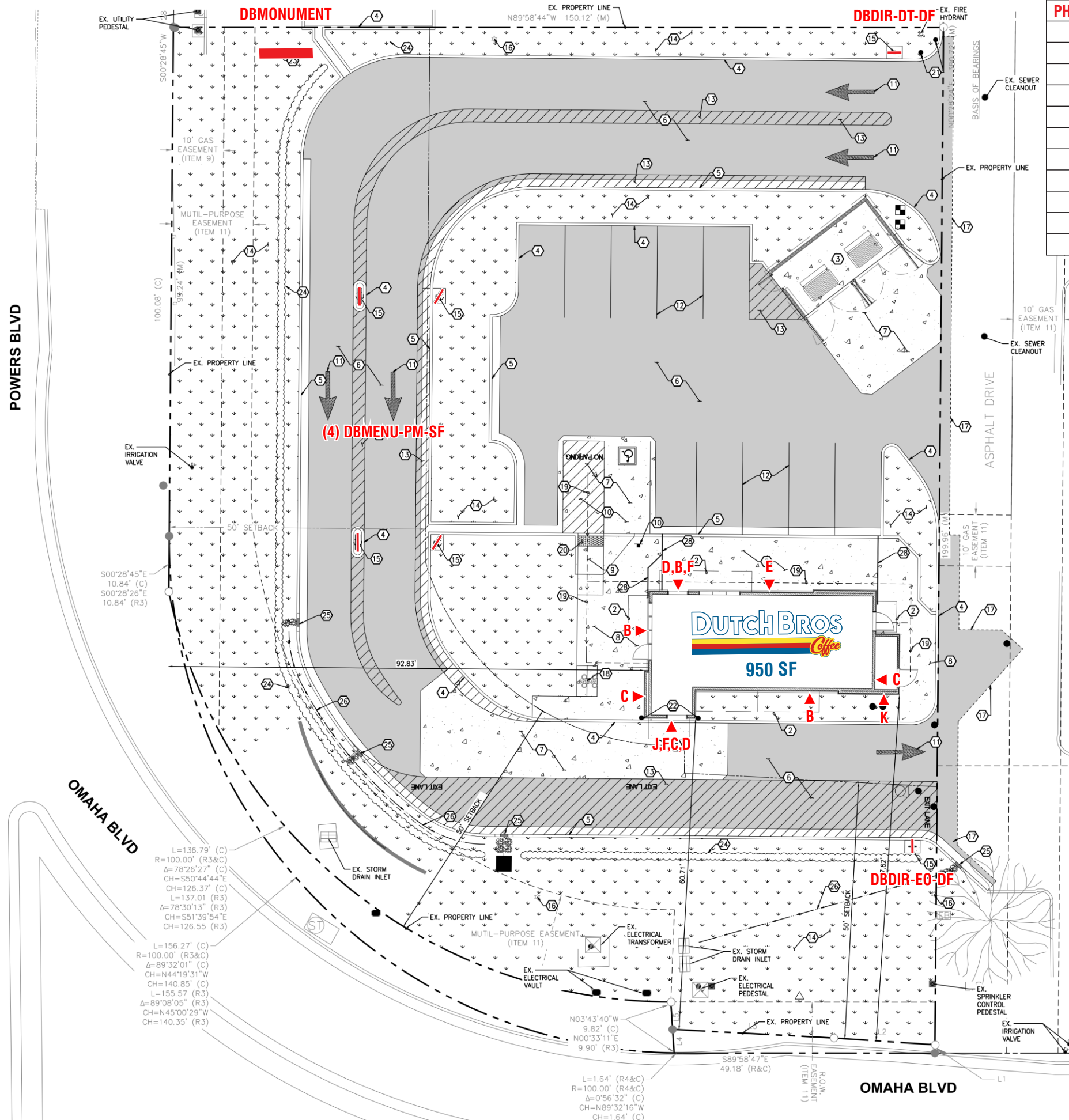
PROD. DETAILS: CH

LEAD DESIGN: CH

SALES: NJ

REVISIONS:

- 1.29.24 Updated site plan.
- 1.30.24 Moved address from West.
- 5.21.24 Changed building removing canopy and adding 18' awning.
- 6.11.24 Updated site plan.



SITE OVERVIEW		
PHASE	SIGN TYPE	QTY
A	DB MONUMENT 4' x 10' @ 7' OAH	1
B	DBCL9	3
C	DBW11	3
D	DBSnapFrame-NL-11x17SC	4
E	DBSnapFrame-NL-30x40SC	2
F	DBMenu-WM	2
G	DBMenu-PM-SF	4
H	DBDIR-DT-DF	1
I	DBDIR-EO-DF	1
J	DBCclearance panel	1
K	DBAddress	1



89975 Prairie Rd.
Eugene, OR 97402
541.485.5546 | esasigns.com

SHOP DRAWING #:
37012A

CLIENT:
Dutch Bros - CO0907
5810 Omaha Blvd.
Colorado Springs, CO

DATE OF SHOP DRAWING:
10/31/23

PROD. DETAILS: CH

LEAD DESIGN: CH

SALES: NJ

REVISIONS:
4.23.24 Changed footer &
pipe size per engineering-
SK
5.14.24 Added fabrication
detail pg. 2- SK

COLOR CODE

- 230-015 YELLOW PSV
- 230-33 RED PSV
- 230-127 INTENSE BLUE PSV
- WHITE
- DB LIGHT GREY (PMS 429)
- DB CUSTOM DARK BLUE

SCOPE OF WORK: MANUFACTURE & INSTALL (1) D/F ILLUMINATED MONUMENT SIGN

FRONT VIEW
SCALE: 3/4"=1'-0"

SIDE VIEW
SCALE: 3/4"=1'-0"



FABRICATED ALUMINUM CABINET PAINTED DB CUSTOM DARK BLUE.
REVEAL PAINTED DB CUSTOM LIGHT GREY.
BACKED-UP WHITE ACRYLIC LETTERS.
1ST SURFACE 230-015 YELLOW, 230-33 RED, & 230-127 INTENSE BLUE PSV.
WHITE LED ILLUMINATION.
FABRICATED ALUMINUM SKIRT WITH MASONRY BOARD BY ES&A.
STONE VENEER & CAP BY G.C.



89975 Prairie Rd.
Eugene, OR 97402
541.485.5546 | esasigns.com

SHOP DRAWING #:
37012A

CLIENT:
Dutch Bros - CO0907
5810 Omaha Blvd.
Colorado Springs, CO

DATE OF SHOP DRAWING:
10/31/23

PROD. DETAILS: CH

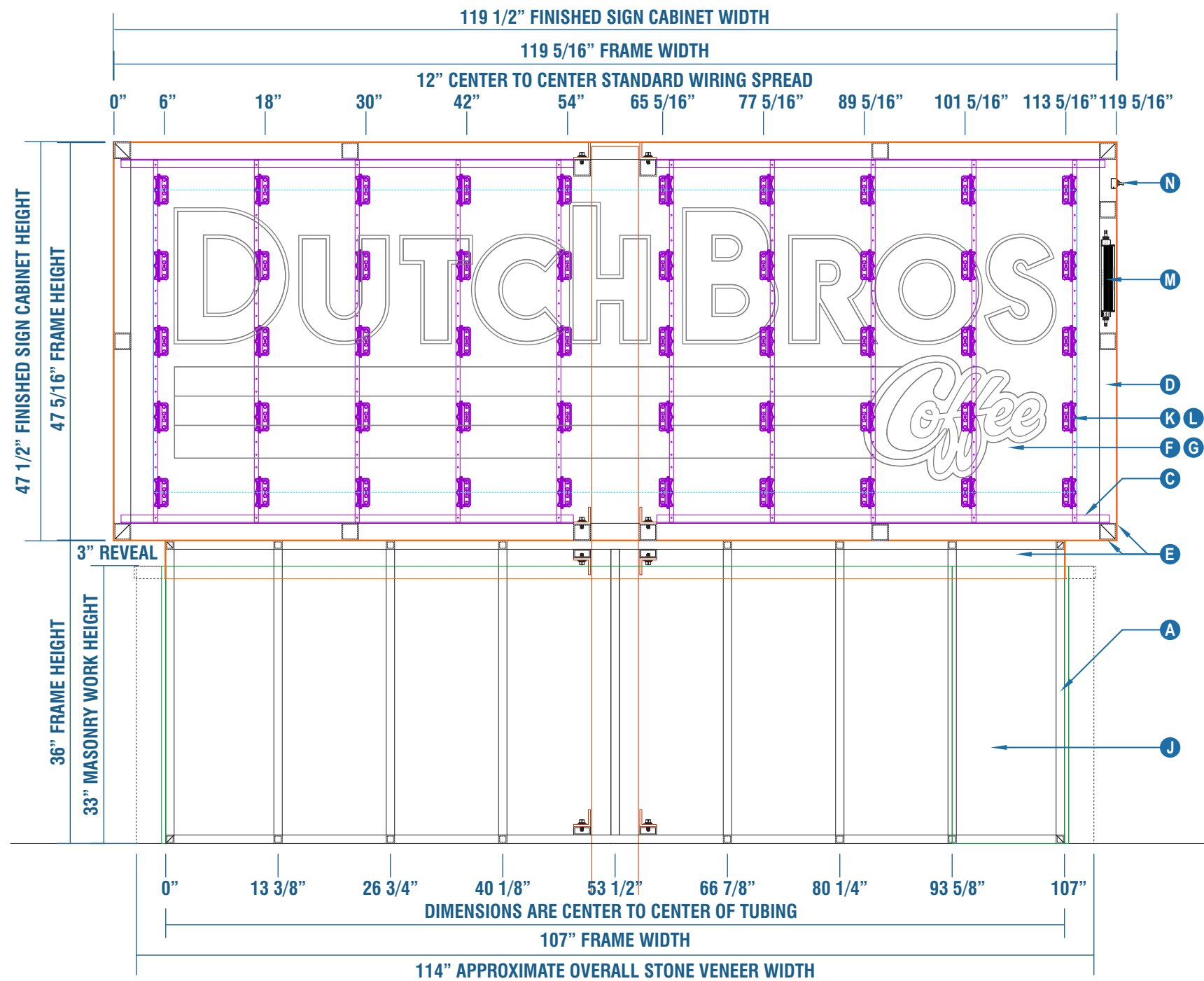
LEAD DESIGN: CH

SALES: NJ

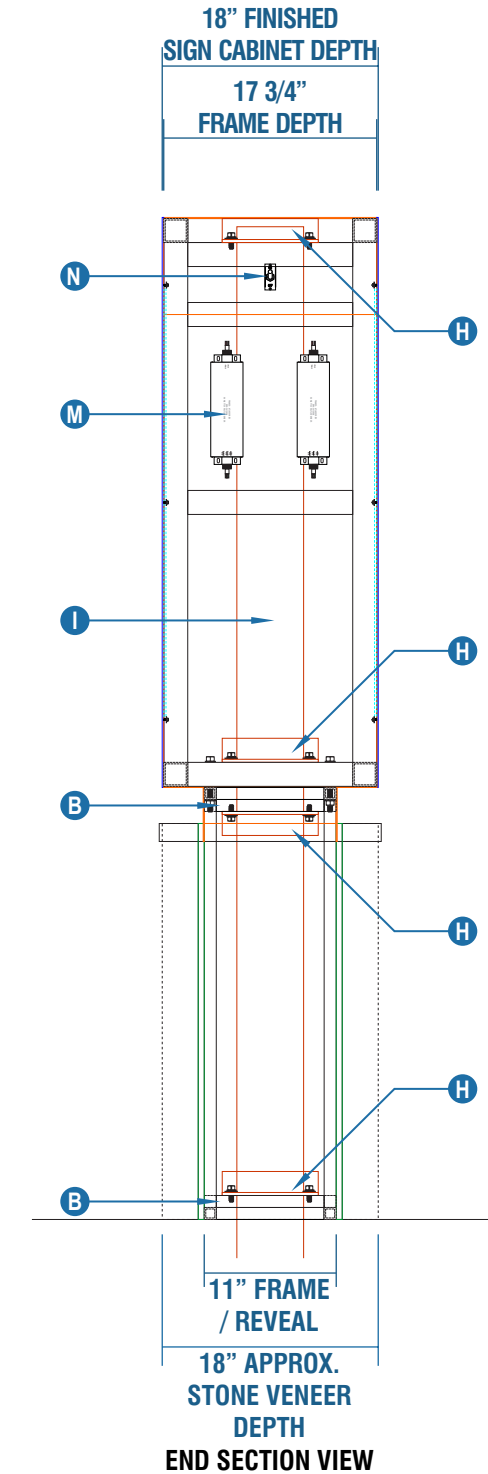
REVISIONS:
4.23.24 Changed footer &
pipe size per engineering-
SK
5.14.24 Added fabrication
detail pg. 2- SK

MANUFACTURING & INSTALLATION DETAILS

SCALE- 3/4" = 1'



FRONT SECTION VIEW



END SECTION VIEW

	MATERIALS	QUANTITY / SINGLE SIGN
A	ALUM SQ TUBE 1 X 1 X .125 (AL4538)	APPROX. 102 LF
B	ALUM RECT. TUBE 1 X 2 X .125 (AL4550)	APPROX. 4 LF
C	ALUM ANGLE 1 X 2 X .125 (AL4734)	APPROX. 23 LF
D	ALUM SQ TUBE 2 X 2 X .125 (AL4554)	APPROX. 74 LF
E	ALUM SHEET .090 (AL4418)	APPROX. 2 SHEETS 4 X 10
F	ALUM SHEET .125 (AL4422)	APPROX. 2 SHEETS 4 X 10
G	ACRYLIC .177 WHITE (PL2509)	APPROX. 2 SHEETS 4 X 10

	MATERIALS	QUANTITY / SINGLE SIGN
H	STEEL ANGLE 2 X 2 X .25 (ST4151)	APPROX. 6 LF
I	STEEL PIPE 5" SCHEDULE 40 (ST4011)	12' 4" OVERALL
J	DUROCK MASONRY BOARD SHEET (SU7730)	APPROX. 2 SHEETS 4 X 8
K	GE TETRA SNAP DF (LE8718)	50 MODULES AS SHOWN
L	TETRA SNAP RAIL (LE8747)	5 QTY. 8' LENGTHS
M	24V 100W POWER SUPPLY (LE8744)	2 QTY.
N	20 AMP TOGGLE SWITCH (EL6240)	1 QTY.



89975 Prairie Rd.
Eugene, OR 97402
541.485.5546 | esasigns.com

SHOP DRAWING #:
37012A

CLIENT:
Dutch Bros - CO0907
5810 Omaha Blvd.
Colorado Springs, CO

DATE OF SHOP DRAWING:
10/31/23

PROD. DETAILS: CH

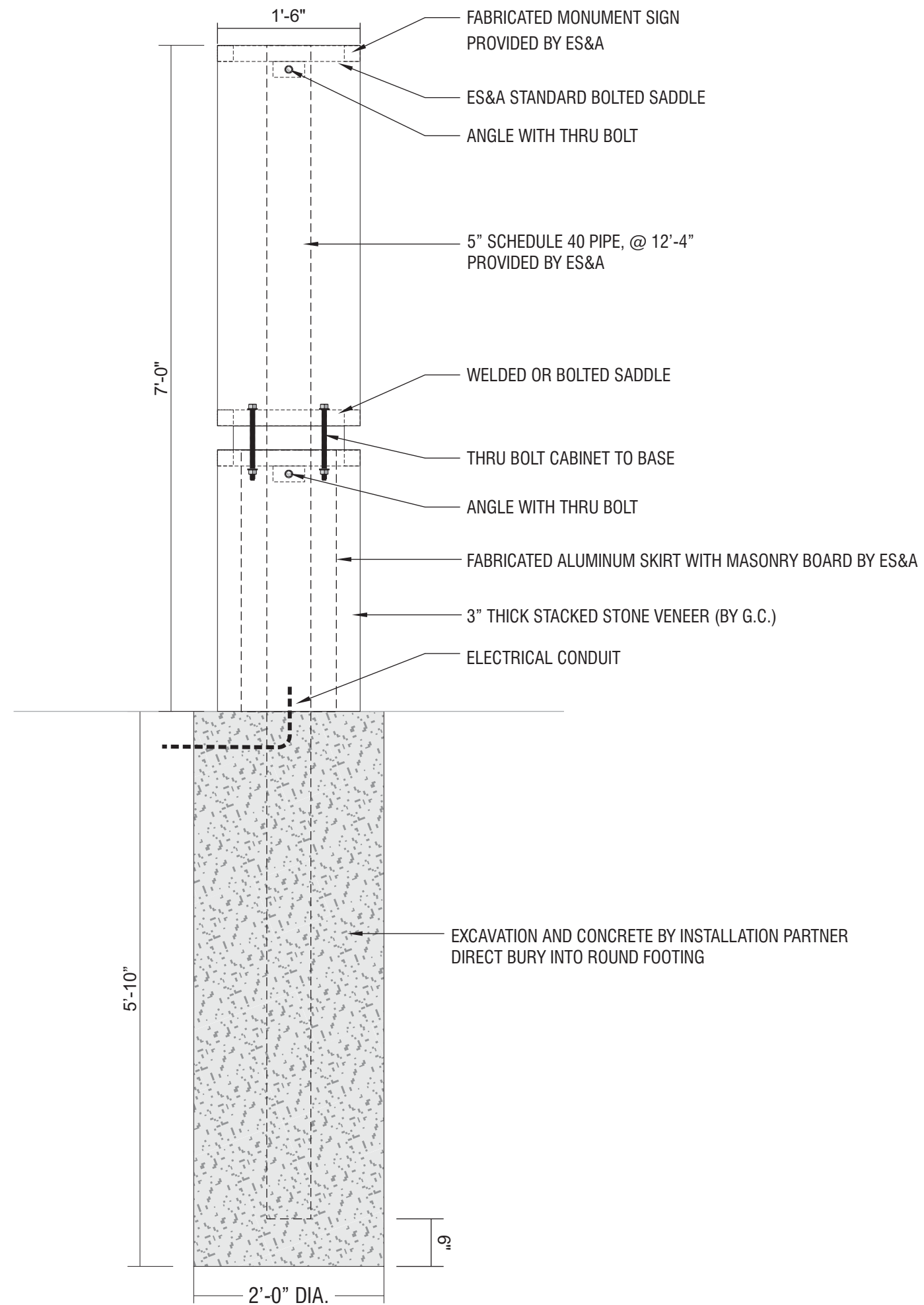
LEAD DESIGN: CH

SALES: NJ

REVISIONS:
4.23.24 Changed footer &
pipe size per engineering-
SK
5.14.24 Added fabrication
detail pg. 2- SK

ATTACHMENT DETAIL

SCALE: 3/4"=1'-0"





89975 Prairie Rd.
Eugene, OR 97402
541.485.5546 | esasigns.com

SHOP DRAWING #:
37012B

CLIENT:
Dutch Bros - CO0907
5810 Omaha Blvd.
Colorado Springs, CO

DATE OF SHOP DRAWING:
10/31/23

PROD. DETAILS: CH

LEAD DESIGN: CH

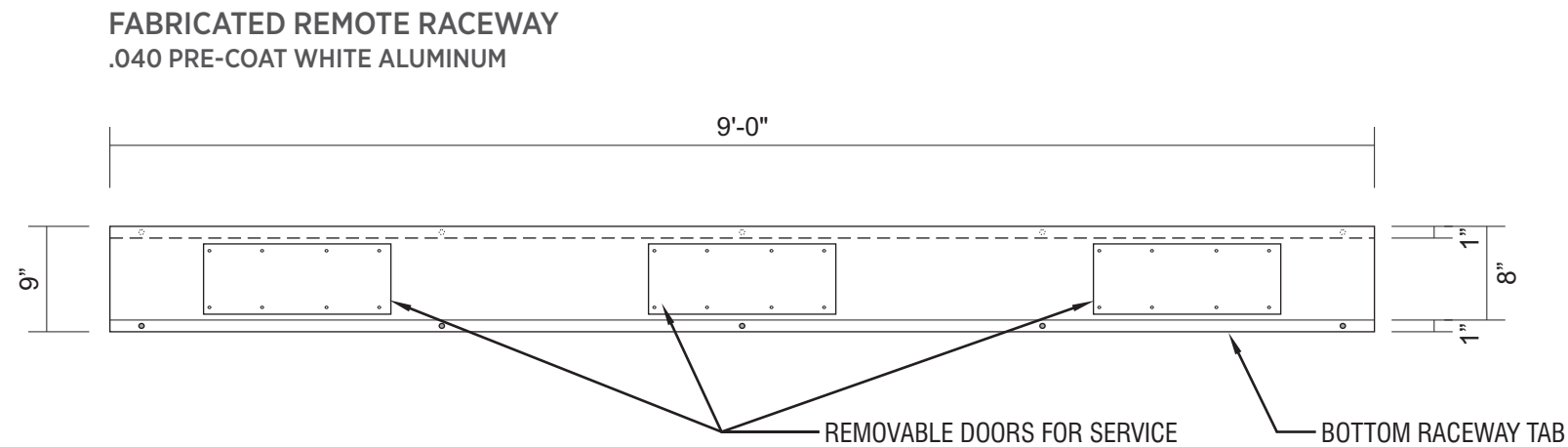
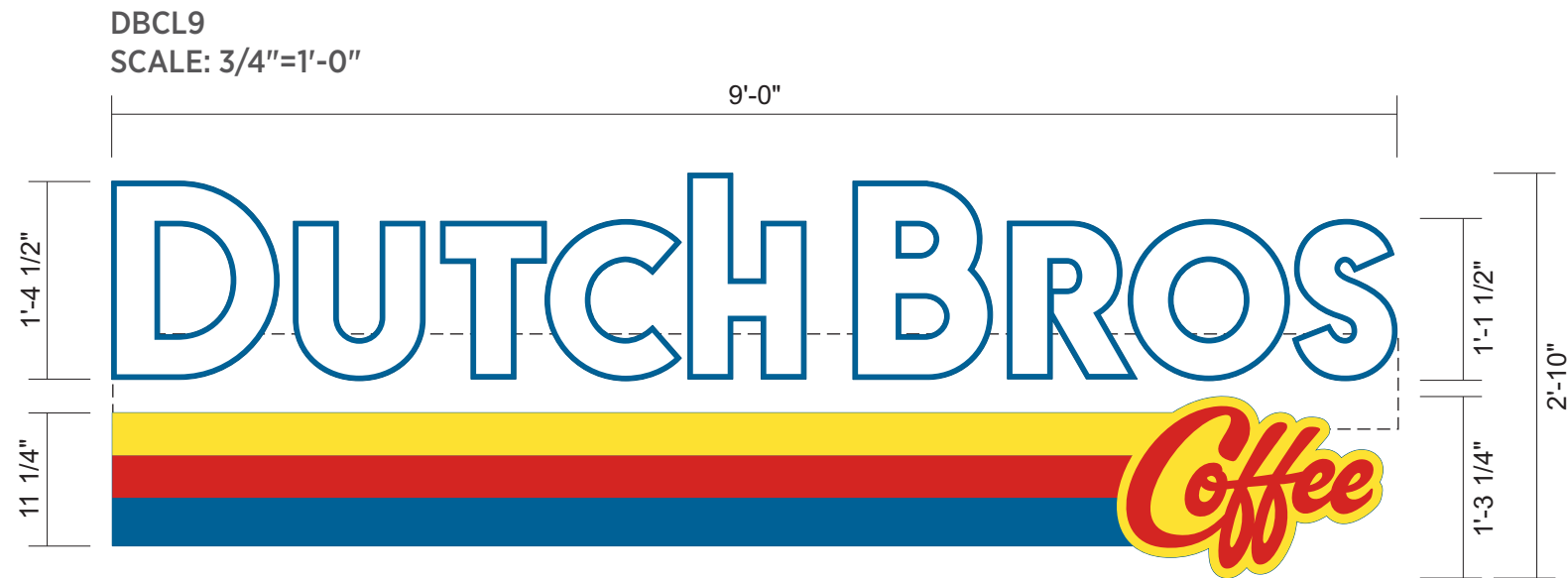
SALES: NJ

REVISIONS:
5.14.24 added LED layout-SK

COLOR CODE

- 230-015 YELLOW PSV
- 230-33 RED PSV
- 230-127 INTENSE BLUE PSV
- WHITE ACRYLIC

SCOPE OF WORK: MANUFACTURE & INSTALL (3) SETS OF ILLUMINATED CHANNEL LETTERS WITH REMOTE RACEWAYS

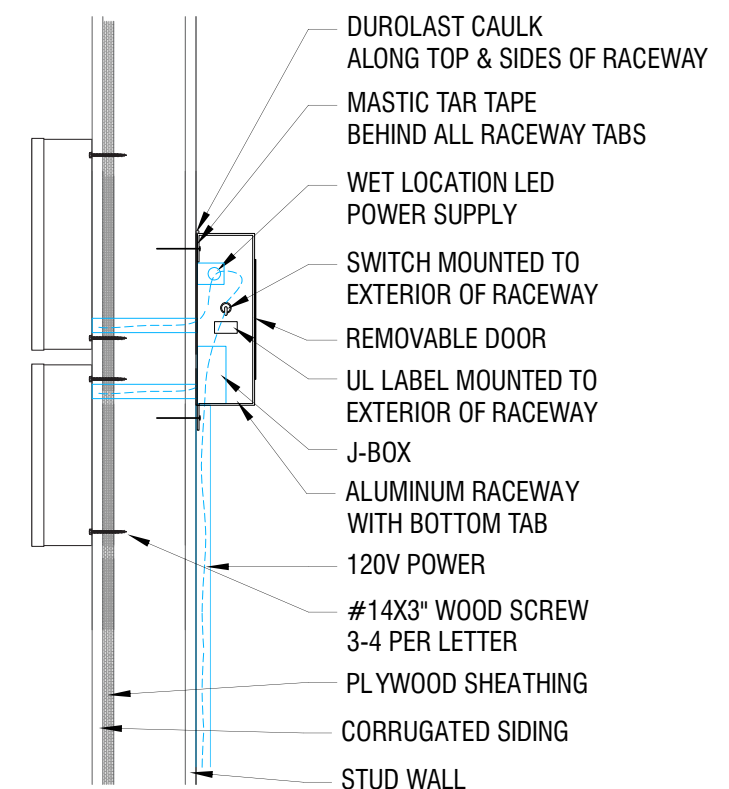


INTERNALLY ILLUMINATED FACE-LIT FLUSH MOUNTED CHANNEL LETTERS
5" DEEP CHANNEL LETTERS.
RETURNS & TRIM CAP PAINTED TO MATCH PANTONE 7691 C "INTENSE BLUE".
WHITE ACRYLIC FACES.
230-127 INTENSE BLUE PSV, 230-015 YELLOW PSV, 230-33 RED PSV.
LED ILLUMINATION.
FLUSH MOUNTED CHANNEL LETTERS WITH REMOTE MOUNTED RACEWAY.
RACEWAY SHALL HAVE A CAULKING APPLIED ALONG THE TOP AND SIDES.
ALL HOLE PENETRATIONS WILL BE SEALED WITH CAULKING.

SIDE VIEW



ATTACHMENT DETAIL
CHANNEL LETTERS WITH REMOTE RACEWAY





89975 Prairie Rd.
Eugene, OR 97402
541.485.5546 | esesigns.com

SHOP DRAWING #:
37012B

CLIENT:
Dutch Bros - C00907
5810 Omaha Blvd.
Colorado Springs, CO

DATE OF SHOP DRAWING:
10/31/23

PROD. DETAILS: CH

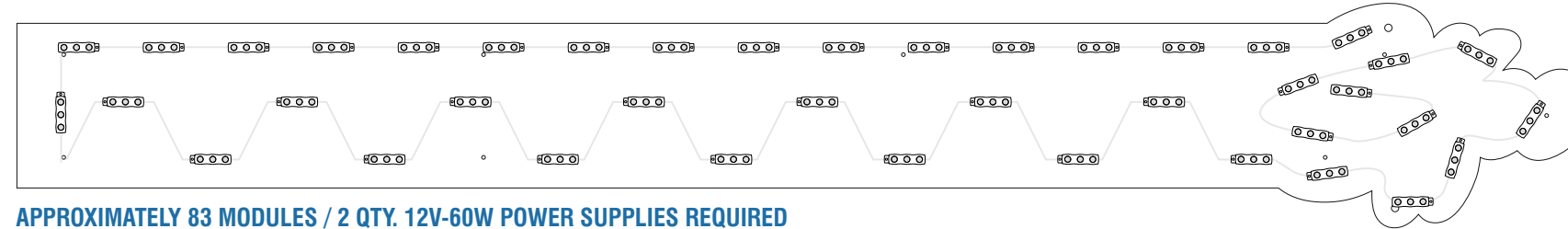
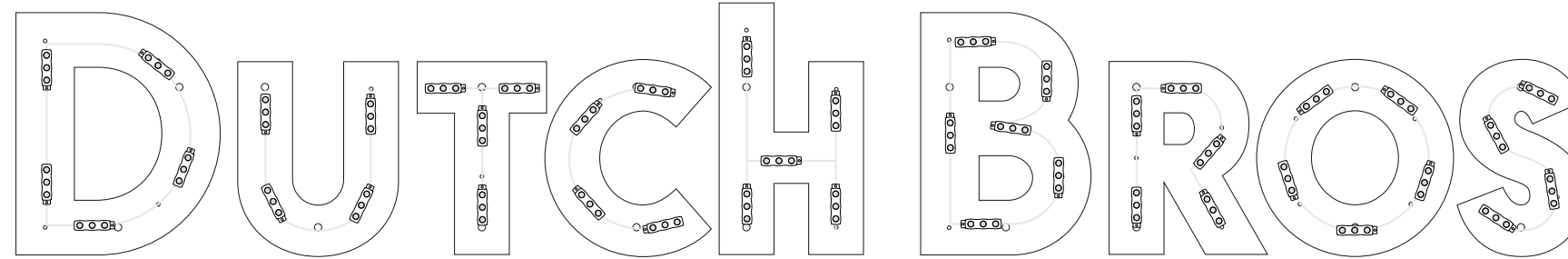
LEAD DESIGN: CH

SALES: NJ

REVISIONS:
5.14.24 added LED layout-
SK

LED LAYOUT

*TYPICAL LED LAYOUT- 9' DB CL SET



APPROXIMATELY 83 MODULES / 2 QTY. 12V-60W POWER SUPPLIES REQUIRED

FRONT VIEW

SCALE 1"=1'

L.E.D. ILLUMINATION:

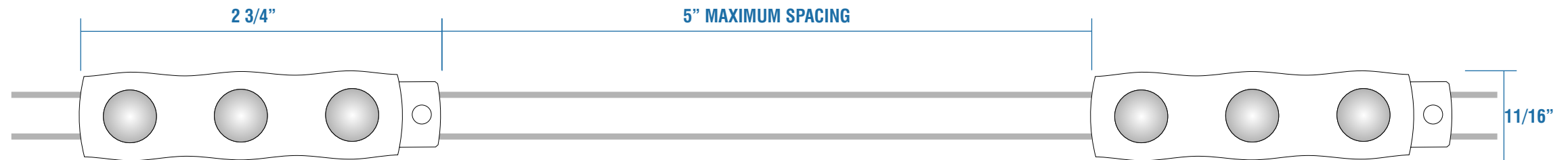
NB1000 WHITE, LED MODULES, SPACED AT 5" APART MAX. (*ACTUAL NUMBER OF LED MODULES AND CONFIGURATION MAY VARY)

POWER SUPPLY:

FRANCE 12V-60W POWER SUPPLY (1 QTY. SUPPLYING 1.2 AMPS)

POWER SUPPLY LOADING- 33.4 FT. OR 50 MODULES PER 12V POWER SUPPLY

INITIAL 120 V POWER TO BE RUN TO SIGN LOCATION



LED MODULE DETAIL TOP VIEW

SCALE 1:1



89975 Prairie Rd.
Eugene, OR 97402
541.485.5546 | esasigns.com

SHOP DRAWING #:
37012C

CLIENT:
Dutch Bros - CO0907
5810 Omaha Blvd.
Colorado Springs, CO

DATE OF SHOP DRAWING:
10/31/23

PROD. DETAILS: CH

LEAD DESIGN: CH

SALES: NJ

REVISIONS:
5.14.24 added LED Layout-
SK

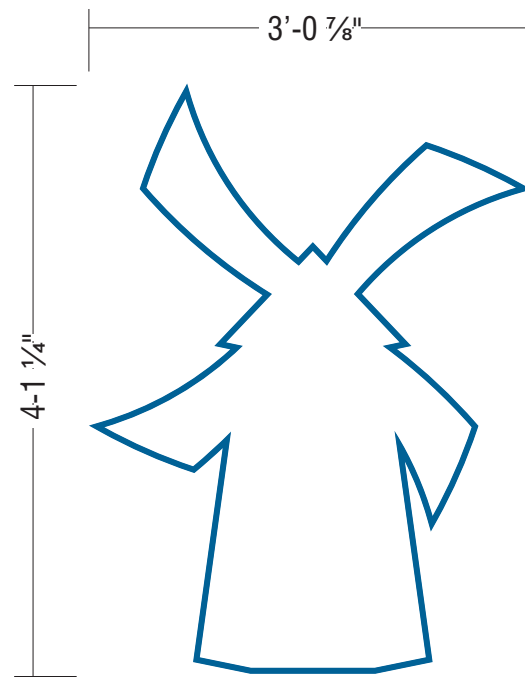
COLOR CODE

 230-127 INTENSE BLUE

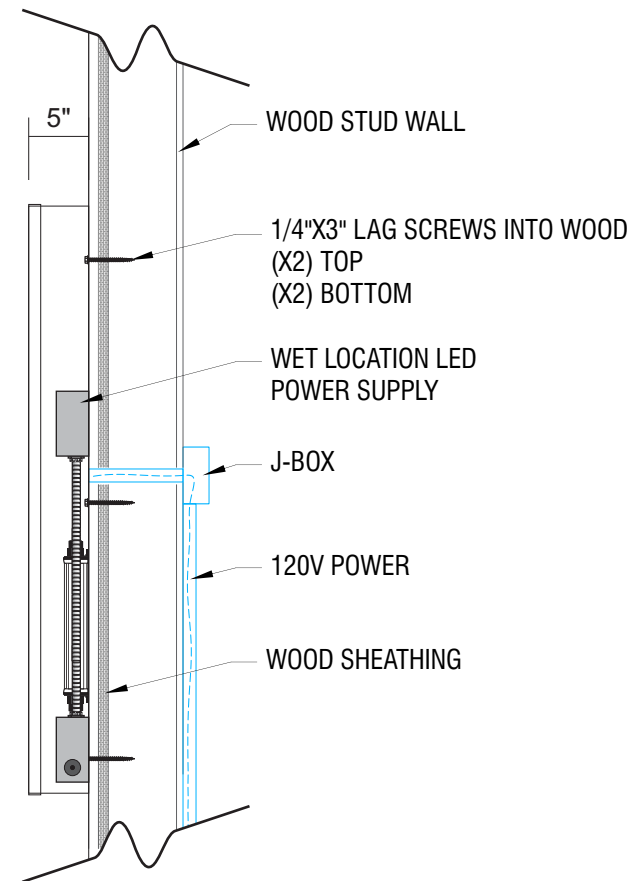
 WHITE

SCOPE OF WORK: MANUFACTURE & INSTALL (3) ILLUMINATED WINDMILL LOGOS

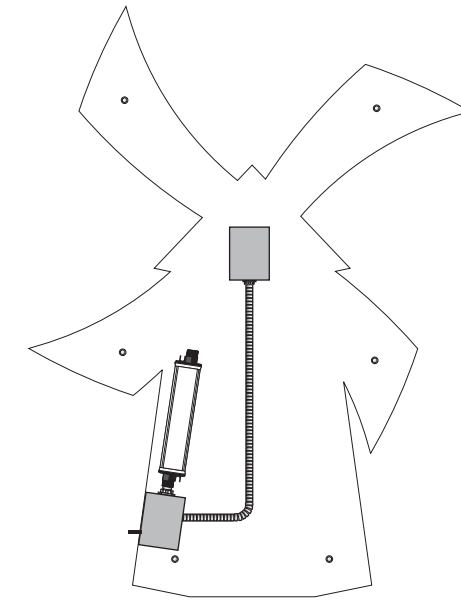
DBW11
SCALE: 3/4"=1'-0"



ATTACHMENT DETAIL
SECTION VIEW



CHANNEL LOGO
SELF CONTAINED



INTERNALLY ILLUMINATED FACE-LIT FLUSH MOUNTED CHANNEL WRAP LOGO
5" DEEP CHANNEL WRAP.
RETURNS & TRIM CAP PAINTED TO MATCH PANTONE 7691 C "INTENSE BLUE".
WHITE ACRYLIC FACE.
230-127 INTENSE BLUE PSV OUTLINE.
LED ILLUMINATION.
FLUSH MOUNTED SELF CONTAINED INSTALLATION.



89975 Prairie Rd.
Eugene, OR 97402
541.485.5546 | esesigns.com

SHOP DRAWING #:
37012C

CLIENT:
Dutch Bros - CO0907
5810 Omaha Blvd.
Colorado Springs, CO

DATE OF SHOP DRAWING:
10/31/23

PROD. DETAILS: CH

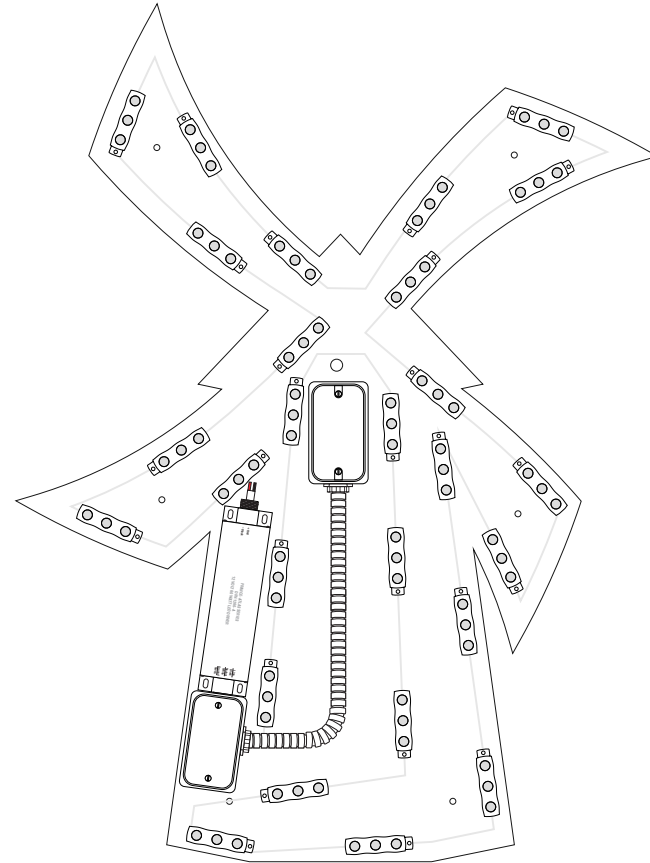
LEAD DESIGN: CH

SALES: NJ

REVISIONS:
5.14.24 added LED Layout-
SK

LED LAYOUT

*TYPICAL LED LAYOUT- 3' WINDMILL



APPROXIMATELY 27 MODULES /
1 QTY. 12V-60W POWER SUPPLIES REQUIRED

FRONT VIEW

SCALE 1"=1'

L.E.D. ILLUMINATION:

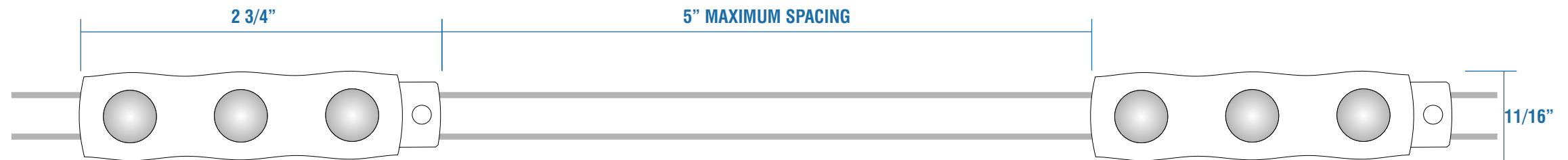
NB1000 WHITE, LED MODULES, SPACED AT 5" APART MAX. (*ACTUAL NUMBER
OF LED MODULES AND CONFIGURATION MAY VARY)

POWER SUPPLY:

FRANCE 12V-60W POWER SUPPLY (1 QTY. SUPPLYING 1.2 AMPS)

POWER SUPPLY LOADING- 33.4 FT. OR 50 MODULES PER 12V POWER SUPPLY

INITIAL 120 V POWER TO BE RUN TO SIGN LOCATION



LED MODULE DETAIL TOP VIEW

SCALE 1:1

SCOPE OF WORK: MANUFACTURE & INSTALL (4) SNAP FRAMES



89975 Prairie Rd.
Eugene, OR 97402
541.485.5546 | esasigns.com

SHOP DRAWING #:
37012D

CLIENT:
Dutch Bros - CO0907
5810 Omaha Blvd.
Colorado Springs, CO

DATE OF SHOP DRAWING:
10/31/23

PROD. DETAILS: CH

LEAD DESIGN: CH

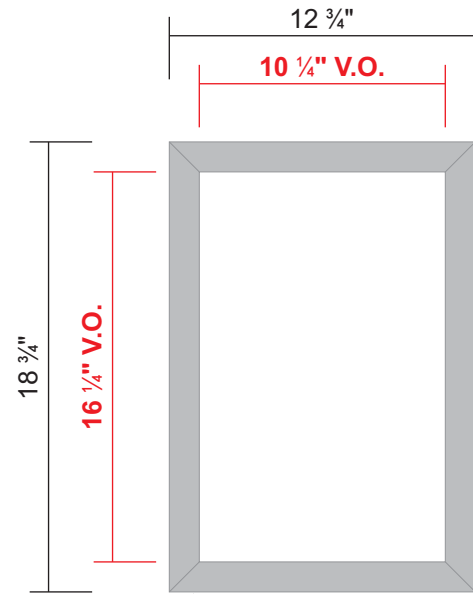
SALES: NJ

REVISIONS:

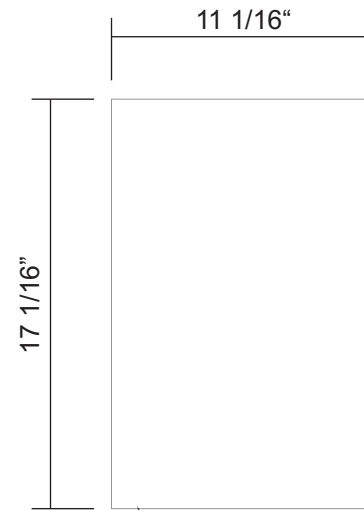
COLOR CODE

 CLEAR ANODIZED ALUMINUM

LAYOUT
SCALE: 1 1/2"=1'-0"

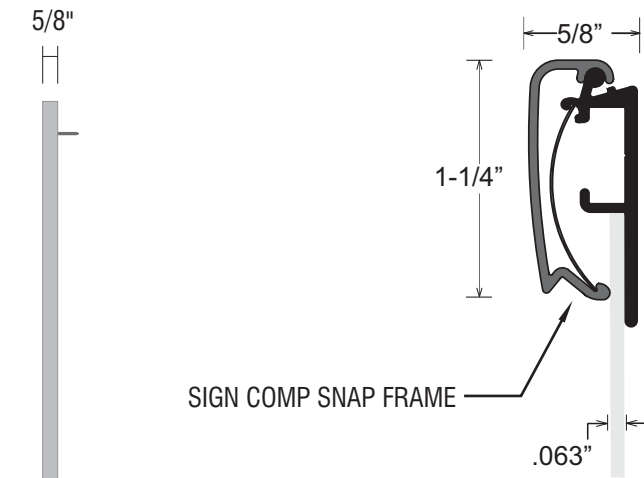


SIGN COMP CLEAR ANODIZED ALUMINUM
SNAP FRAME FOR A 11" X 17" POSTER



.063 PRE-COAT WHITE ALUMINUM INSERT/BACK

DETAIL:
FULL SCALE



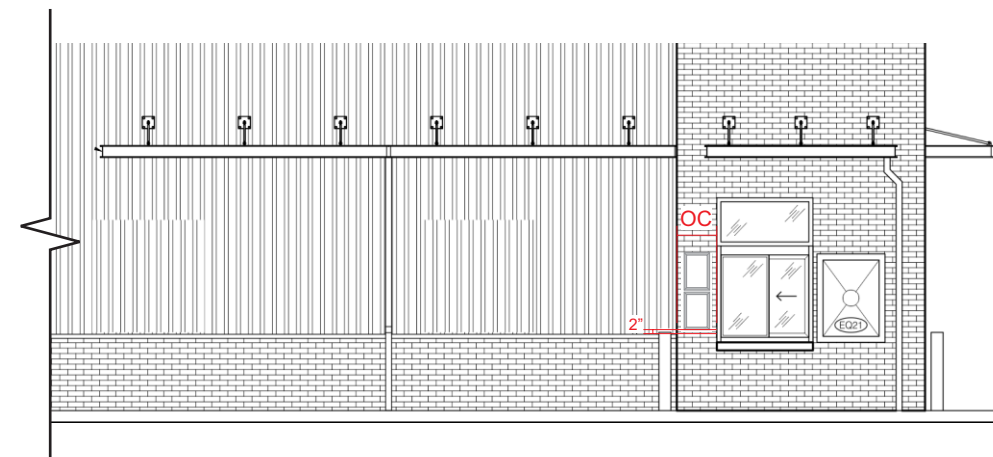
SCREW TO EXTERIOR WALL OF BUILDING

ELEVATION:
WALK-UP WINDOW
SCALE: 1/8"=1'-0"



(UNLESS OTHERWISE DIRECTED)
CENTERED BETWEEN MULLIONS 2" ABOVE STONE CAP
1" VERTICAL GAP BETWEEN SNAP FRAMES

ELEVATION:
DRIVE-THRU WINDOW
SCALE: 1/8"=1'-0"



(UNLESS OTHERWISE DIRECTED)
CENTERED BETWEEN MULLIONS 2" ABOVE STONE CAP
1" VERTICAL GAP BETWEEN SNAP FRAMES

SCOPE OF WORK: MANUFACTURE & INSTALL (2) SNAP FRAMES



89975 Prairie Rd.
Eugene, OR 97402
541.485.5546 | esasigns.com

SHOP DRAWING #:
37012E

CLIENT:
Dutch Bros - CO0907
5810 Omaha Blvd.
Colorado Springs, CO

DATE OF SHOP DRAWING:
10/31/23

PROD. DETAILS: CH

LEAD DESIGN: CH

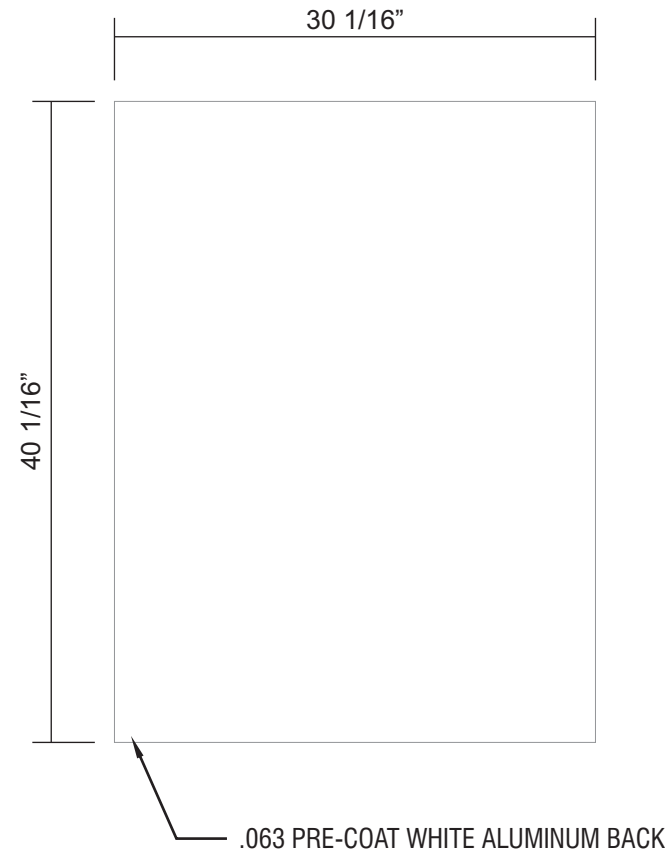
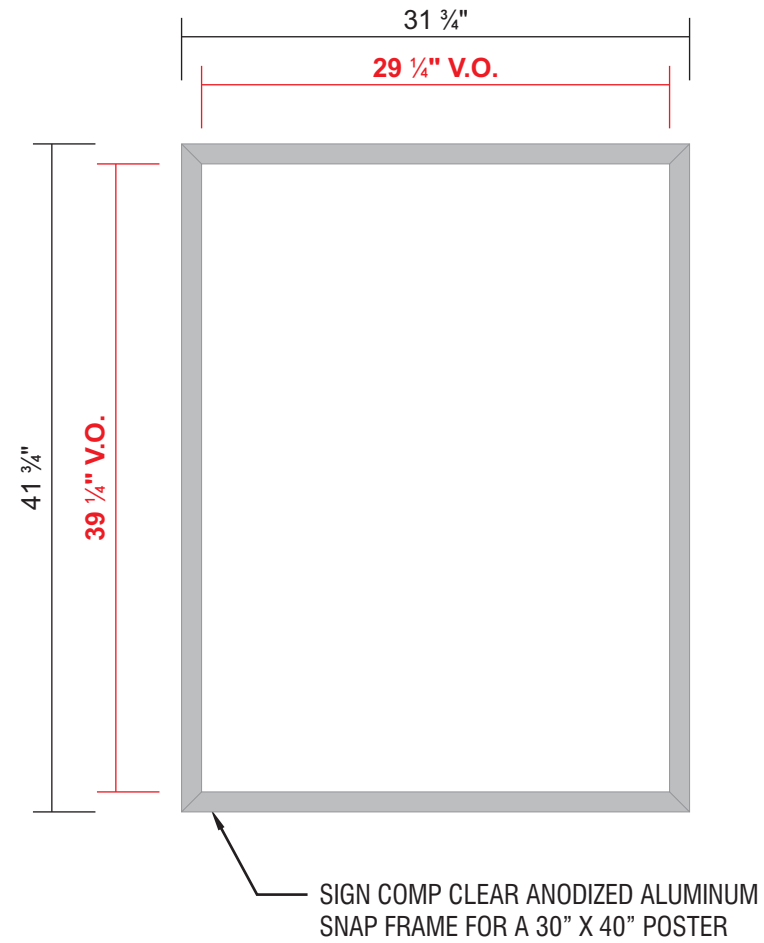
SALES: NJ

REVISIONS:

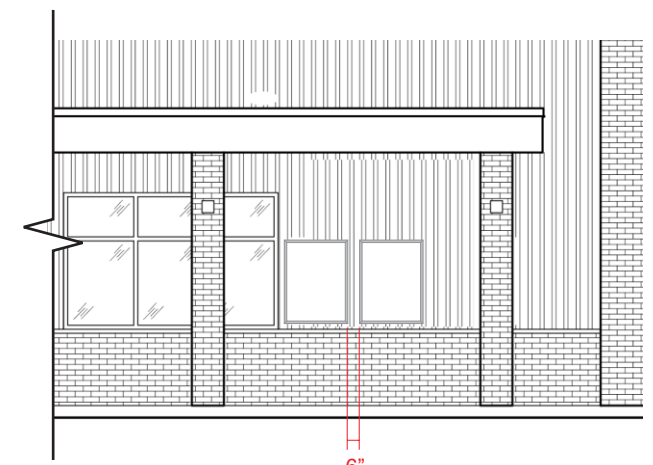
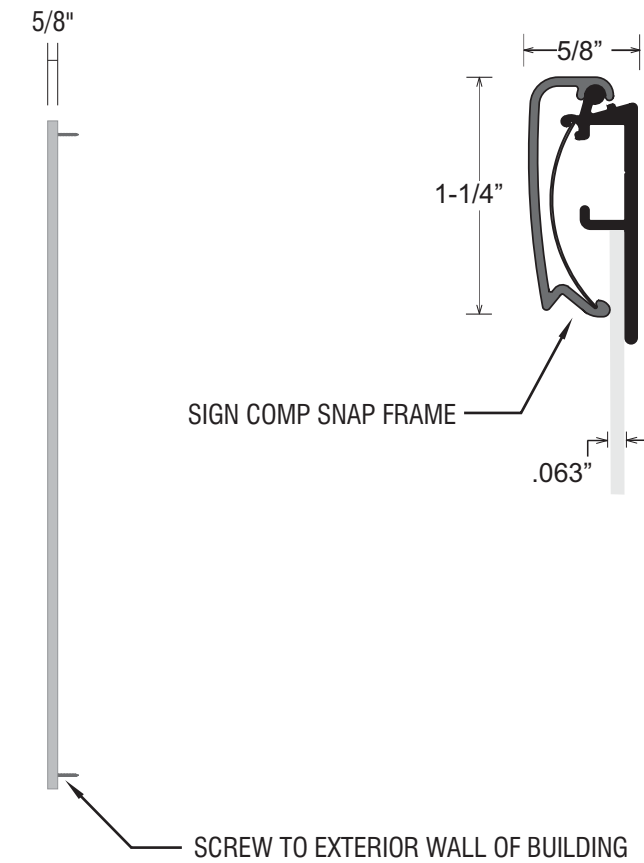
COLOR CODE

 CLEAR ANODIZED ALUMINUM

LAYOUT
SCALE: 1"=1'-0"



DETAIL:
FULL SCALE



ELEVATION:
WALK-UP WINDOW
SCALE: 1/8"=1'-0"
(UNLESS OTHERWISE DIRECTED)
2" INSET FROM MULLION
2" ABOVE STONE CAP
6" BETWEEN MENUS



89975 Prairie Rd.
Eugene, OR 97402
541.485.5546 | esasigns.com

SHOP DRAWING #:
37012F



CLIENT:
Dutch Bros - C00907
5810 Omaha Blvd.
Colorado Springs, CO

DATE OF SHOP DRAWING:
10/31/23

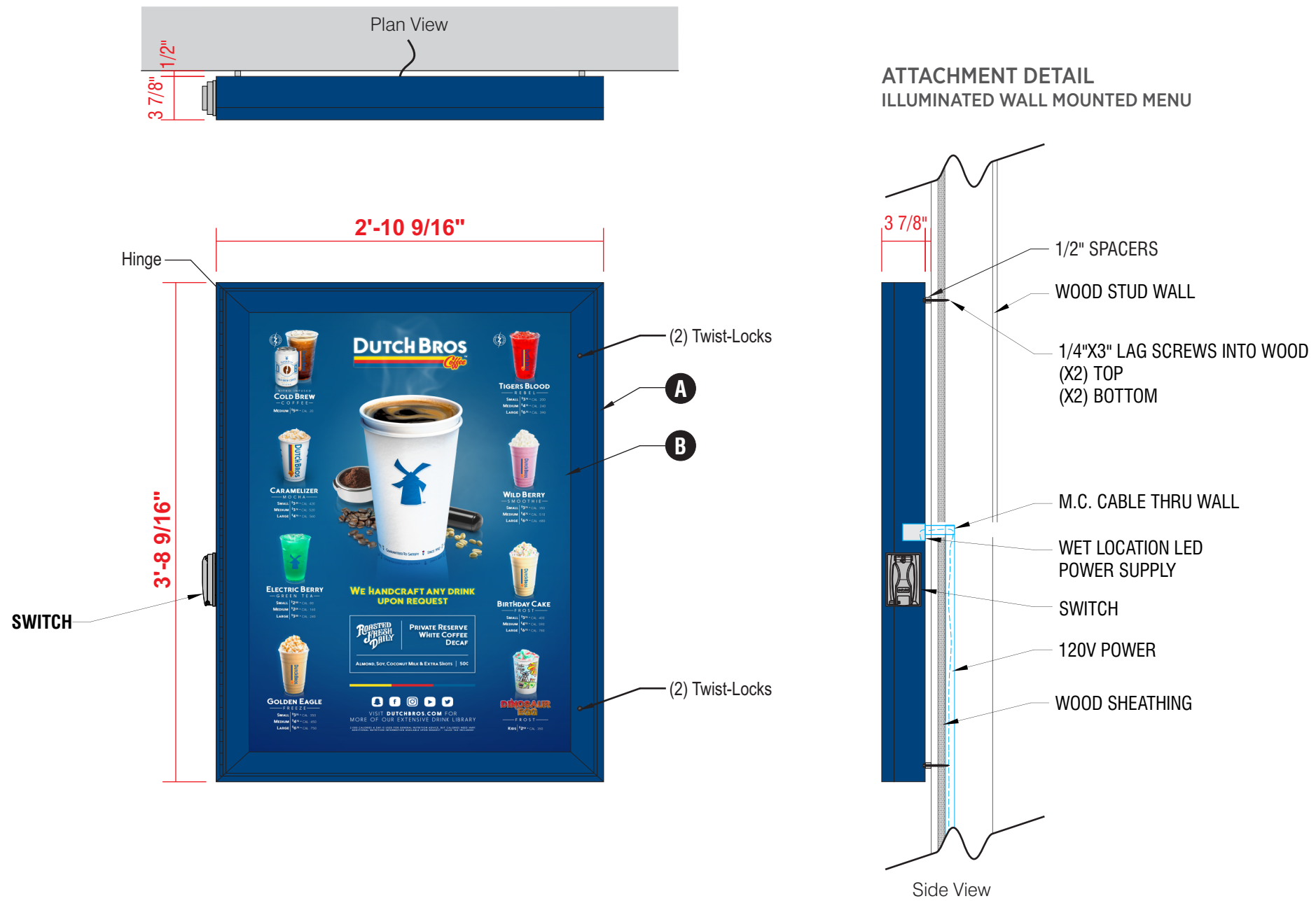
PROD. DETAILS: CH
LEAD DESIGN: CH
SALES: NJ

REVISIONS:
5.14.24 added LED layout-
SK

COLOR CODE

-  DIGITAL PRINT
-  POWDER COATED DB CUSTOM DARK BLUE

SCOPE OF WORK: PROVIDE (2) ILLUMINATED MENU SIGNS V5 - WALL-MOUNTED



- A** WALL-MOUNTED, BACKLIT MENU SIGN
 - PRINTED MENU PANEL NOT INCLUDED
 - LED OUTDOOR LIGHT BOX
 - LOCKABLE HINGED DOOR
 - ALUMINUM CONSTRUCTION
- B** PRINTED LIGHT GUIDE PANEL
 - AS SEPARATE ORDER

MANUFACTURE DETAILS



89975 Prairie Rd.
Eugene, OR 97402
541.485.5546 | esasigns.com

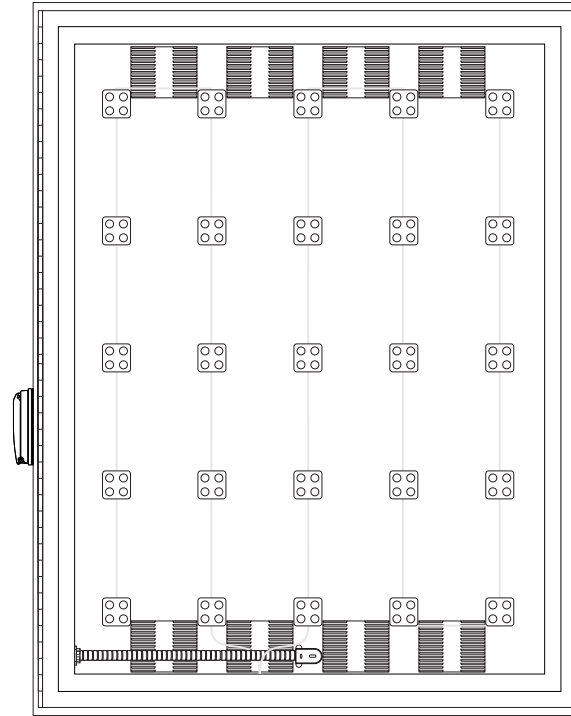
SHOP DRAWING #:
37012F

CLIENT:
Dutch Bros - C00907
5810 Omaha Blvd.
Colorado Springs, CO

DATE OF SHOP DRAWING:
10/31/23

PROD. DETAILS: CH
LEAD DESIGN: CH
SALES: NJ

REVISIONS:
5.14.24 added LED layout-
SK



FRONT VIEW
SCALE 1"=1'

L.E.D MODULES PER SIGN =25

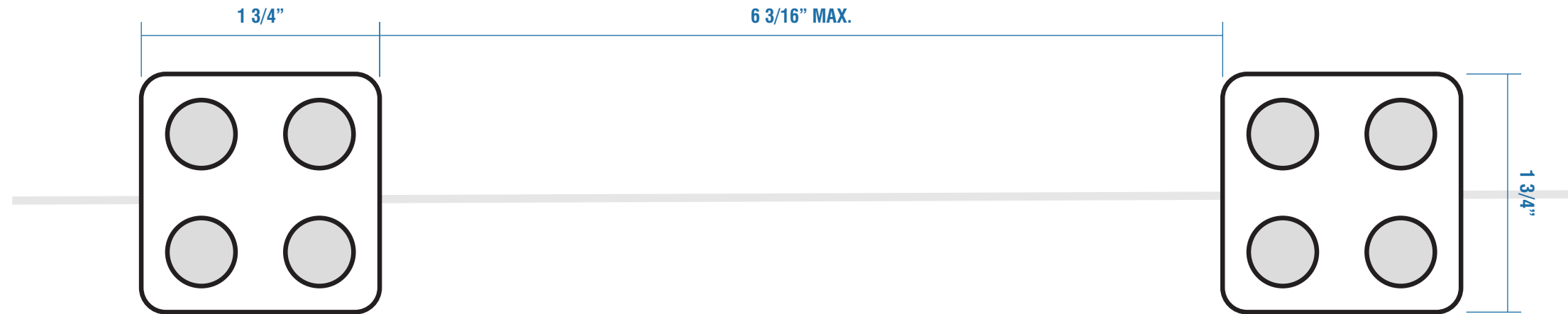
L.E.D. ILLUMINATION:

WHITE, LED MODULES AT APPROXIMATELY 17 LINEAR FEET TOTAL, SPACED AT 6 3/16" APART MAX.

POWER SUPPLY:

POWER SUPPLY (1 QTY. SUPPLYING 1.2 AMPS / SELF CONTAINED INSIDE SIGN)

INITIAL 120 V POWER TO BE RUN TO SIGN LOCATION (SEE ATTACHMENT DETAIL PAGE 1)



**LED MODULE DETAIL
TOP VIEW**
SCALE 1:1



89975 Prairie Rd.
Eugene, OR 97402
541.485.5546 | esasigns.com

SHOP DRAWING #:
37012G

CLIENT:
Dutch Bros - C00907
5810 Omaha Blvd.
Colorado Springs, CO

DATE OF SHOP DRAWING:
10/31/23

PROD. DETAILS: CH

LEAD DESIGN: CH

SALES: NJ

REVISIONS:
5.14.24 added LED Layout-SK

COLOR CODE



DIGITAL PRINT



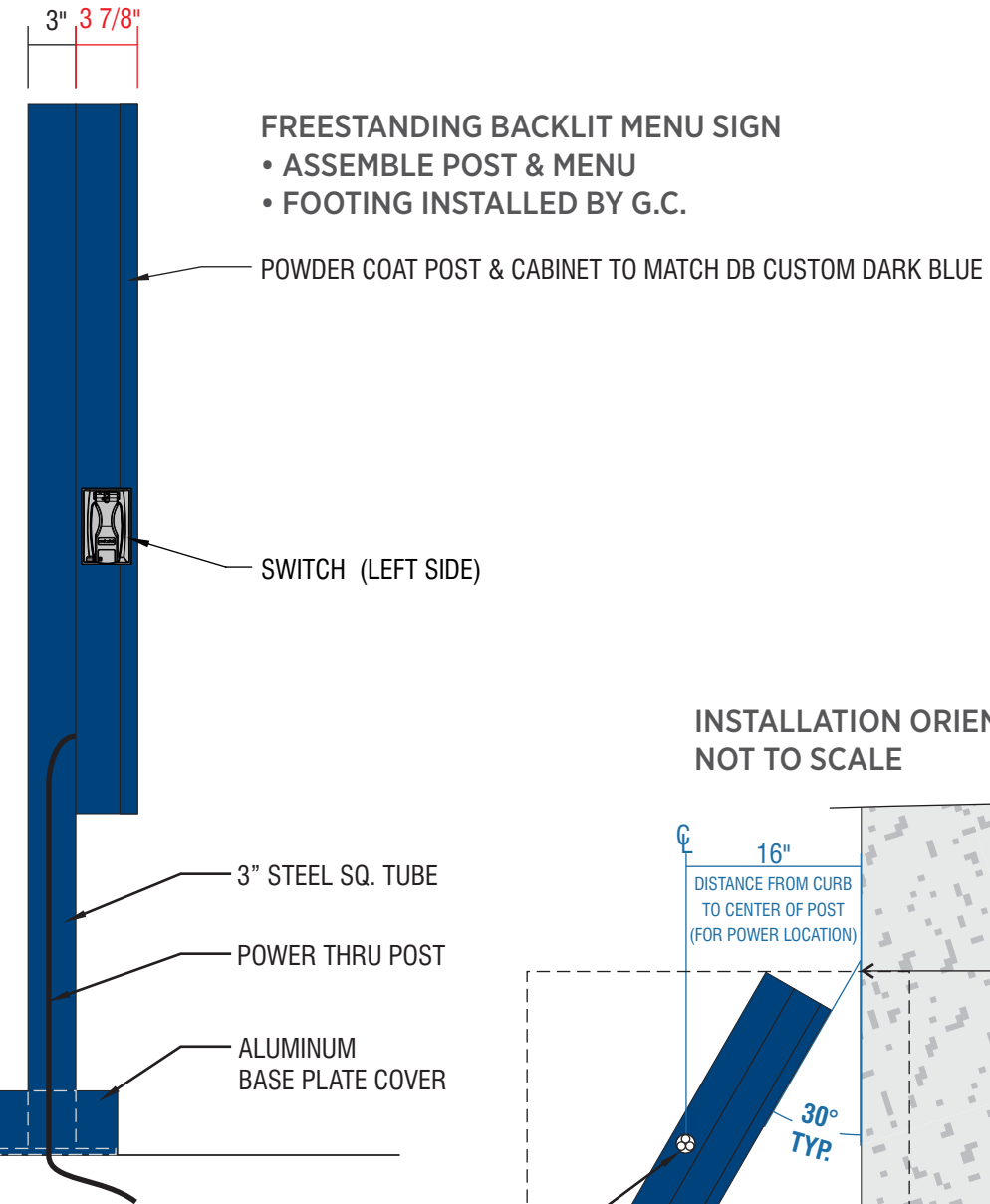
POWDER COATED
DB DARK BLUE

SCOPE OF WORK: PROVIDE (4) S/F ILLUMINATED MENU SIGNS V5 - PLATE-MOUNTED

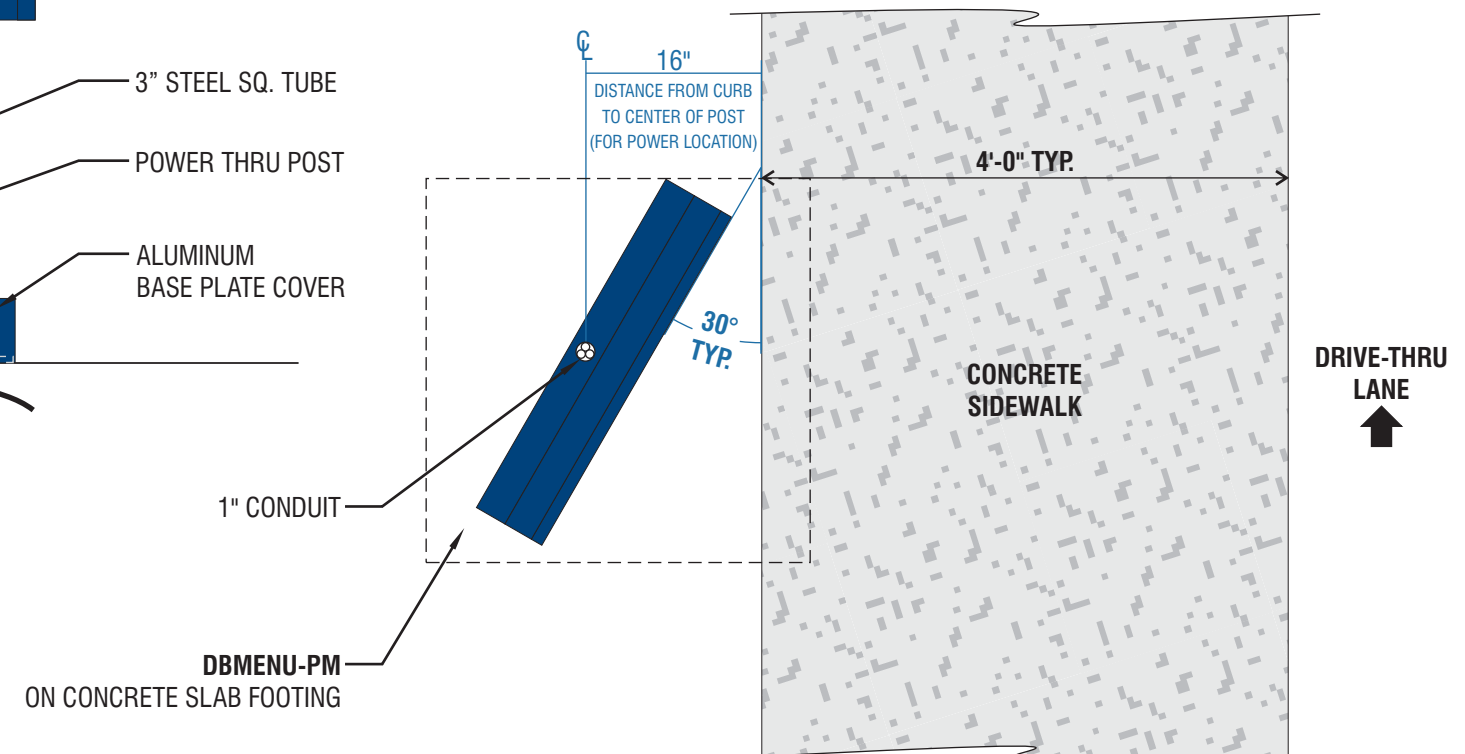
SCALE: 1"=1'-0"



SIDE VIEW



INSTALLATION ORIENTATION DETAIL
NOT TO SCALE





89975 Prairie Rd.
Eugene, OR 97402
541.485.5546 | esesigns.com

SHOP DRAWING #:
37012G

CLIENT:
Dutch Bros - C00907
5810 Omaha Blvd.
Colorado Springs, CO

DATE OF SHOP DRAWING:
10/31/23

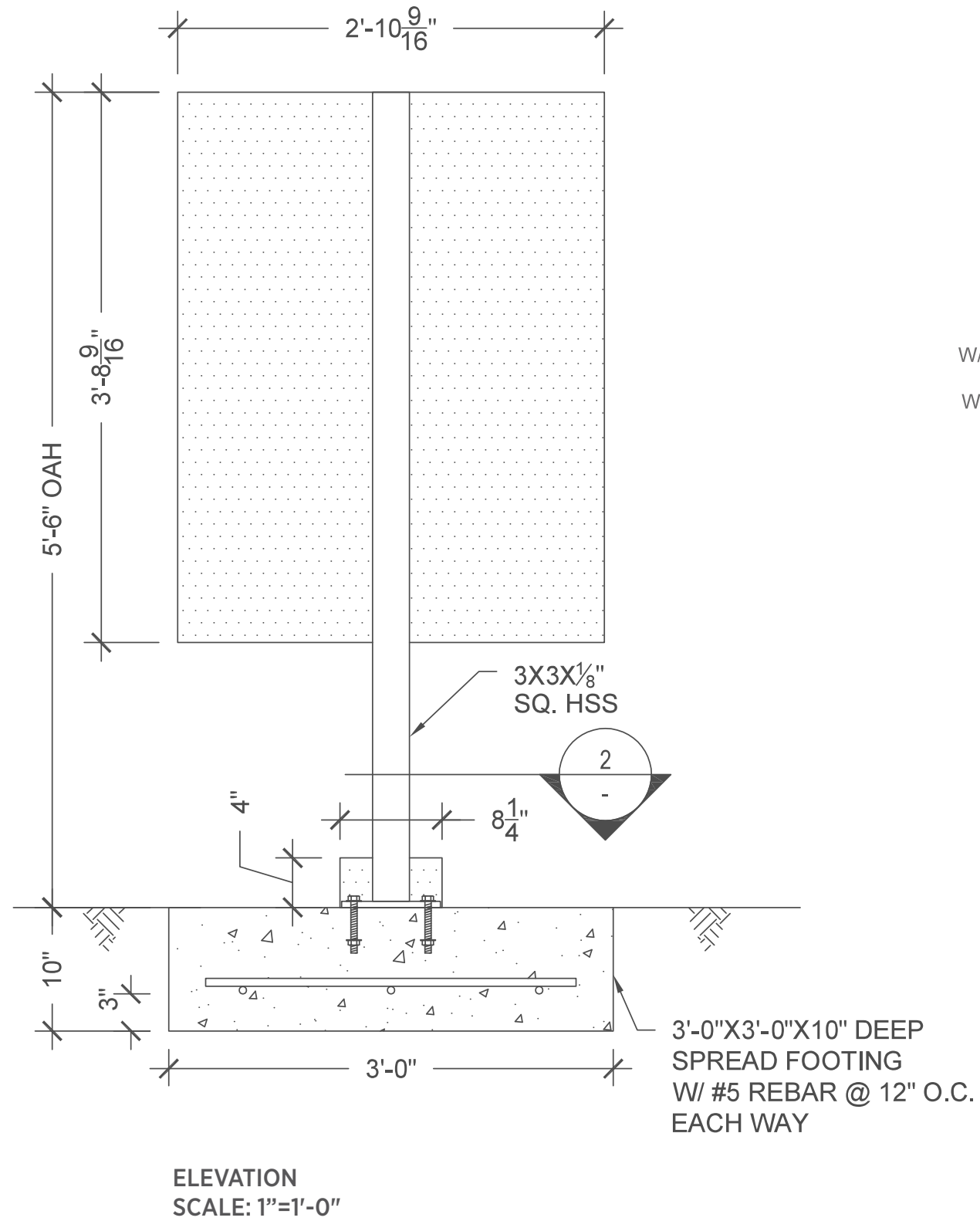
PROD. DETAILS: CH

LEAD DESIGN: CH

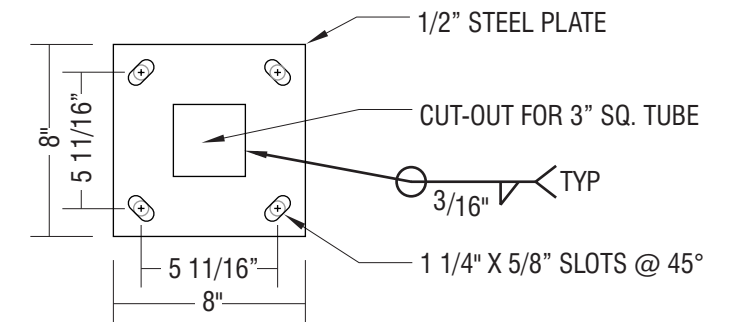
SALES: NJ

REVISIONS:
5.14.24 added LED Layout-
SK

ENGINEERING DETAILS



8"x8"x¹/₂" STEEL PLATE
W/ (4) ¹/₂" Ø THREADED ANCHOR RODS
MIN. EMBED.=4" INTO CONCRETE
W/NUT/WASHER/NUT @ EMBED. END



MOUNTING PLATE
SCALE: 1 1/2"=1'-0"

MANUFACTURE DETAILS



89975 Prairie Rd.
Eugene, OR 97402
541.485.5546 | esasigns.com

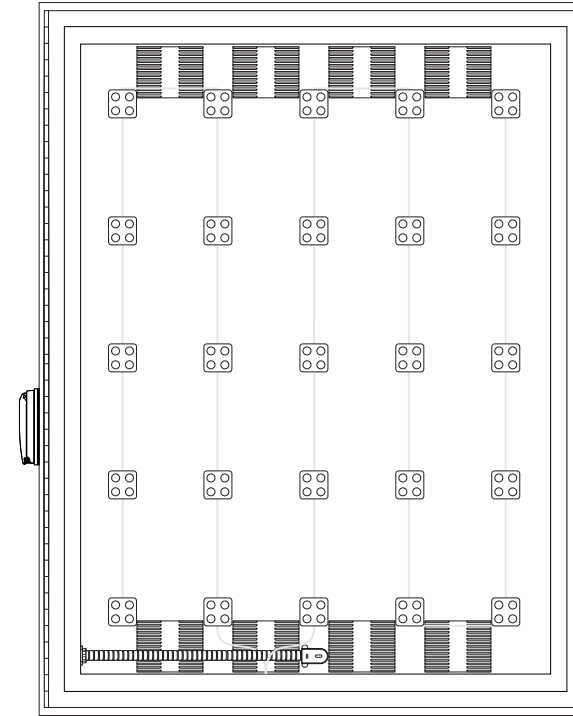
SHOP DRAWING #:
37012G

CLIENT:
Dutch Bros - C00907
5810 Omaha Blvd.
Colorado Springs, CO

DATE OF SHOP DRAWING:
10/31/23

PROD. DETAILS: CH
LEAD DESIGN: CH
SALES: NJ

REVISIONS:
5.14.24 added LED Layout-
SK



FRONT VIEW
SCALE 1"=1'

L.E.D MODULES PER SIGN =25

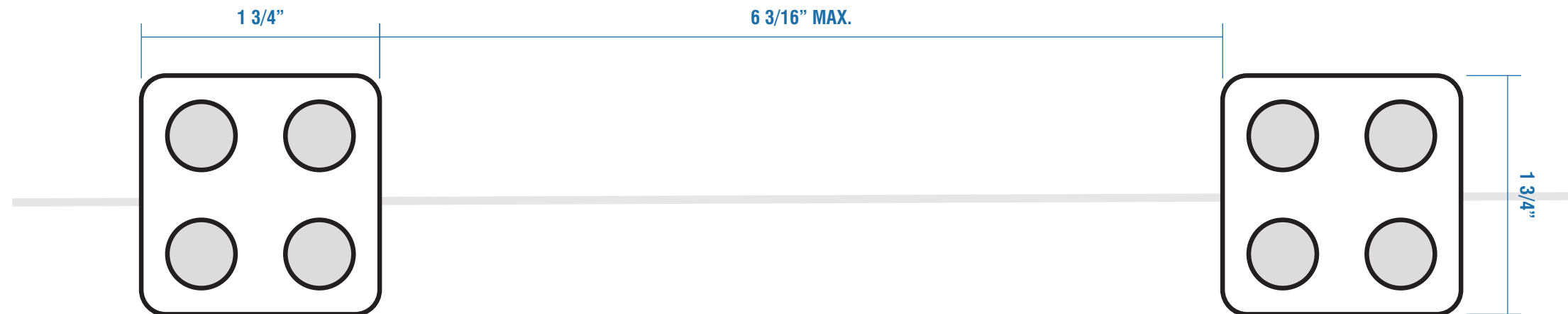
L.E.D. ILLUMINATION:

WHITE, LED MODULES AT APPROXIMATELY 17 LINEAR FEET TOTAL, SPACED AT 6 3/16" APART MAX.

POWER SUPPLY:

POWER SUPPLY (1 QTY. SUPPLYING 1.2 AMPS / SELF CONTAINED INSIDE SIGN)

INITIAL 120 V POWER TO BE RUN TO SIGN LOCATION (SEE ATTACHMENT DETAIL PAGE 1)



**LED MODULE DETAIL
TOP VIEW**
SCALE 1:1

SCOPE OF WORK: MANUFACTURE & INSTALL (1) D/F NON-ILLUMINATED 'DRIVE THRU' SIGN



89975 Prairie Rd.
Eugene, OR 97402
541.485.5546 | esasigns.com

SHOP DRAWING #:
37012H

CLIENT:
Dutch Bros - CO0907
5810 Omaha Blvd.
Colorado Springs, CO

DATE OF SHOP DRAWING:
10/31/23

PROD. DETAILS: CH

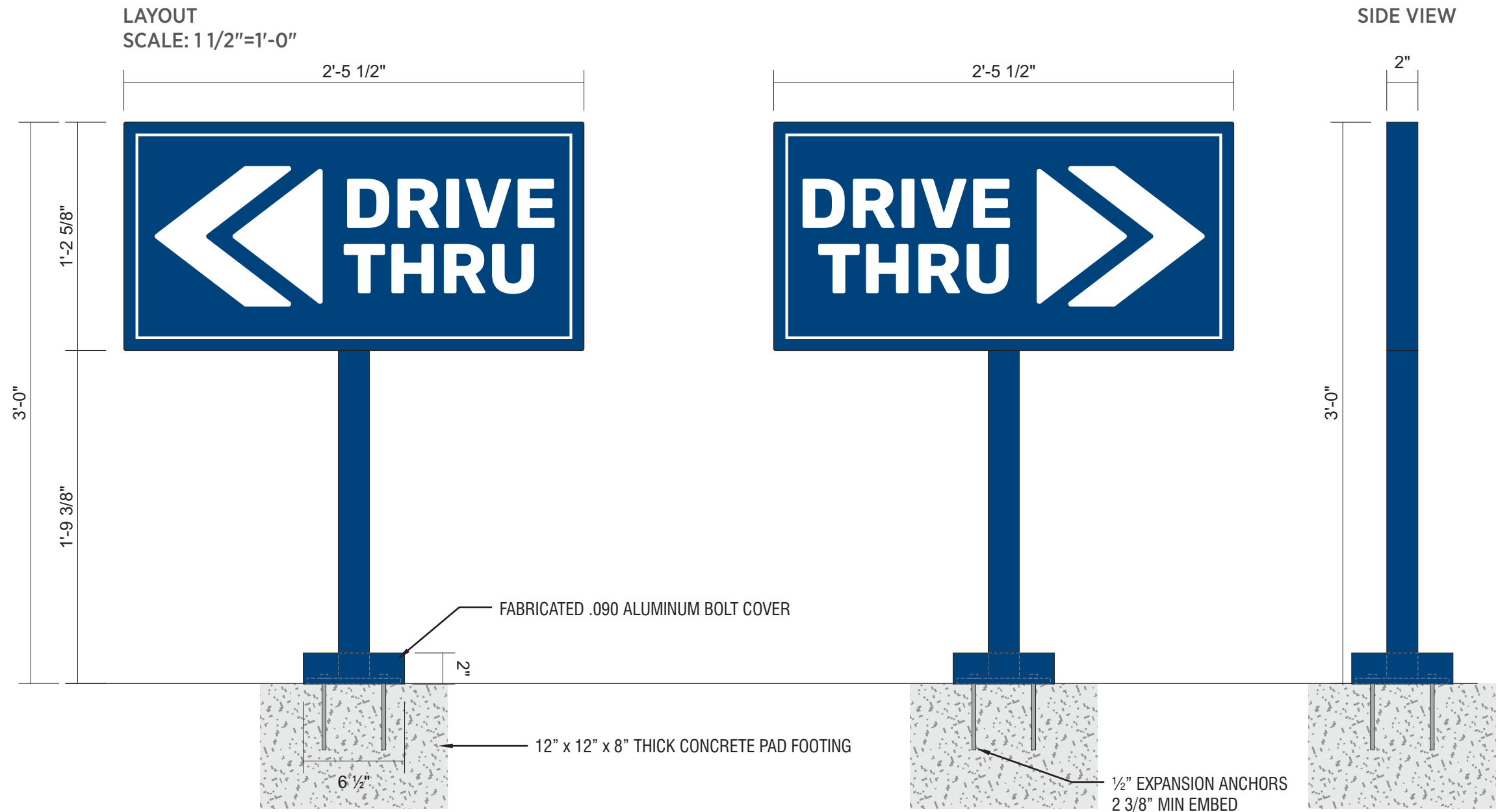
LEAD DESIGN: CH

SALES: NJ

REVISIONS:

COLOR CODE

- DB CUSTOM DARK BLUE
- WHITE



DIAMOND GRADE REFLECTIVE WHITE VINYL WITH DIGITALLY PRINTED BACKGROUND TO MATCH DB CUSTOM DARK BLUE
(SPECIAL PRODUCTION NOTE: GRAPHICS TO BE INSET FROM EDGE 1/8").

- 2" X 2" SQUARE TUBE ALUMINUM FRAME & POST WITH ALUMINUM FACES & 1/4" X 6" X 6" PLATE
- FABRICATED .090 ALUMINUM BOLT COVER
- PAINT DB CUSTOM DARK BLUE
- INSTALL PLATE-MOUNT SIGN WITH 1/2" EXPANSION ANCHORS
- PAD FOOTING INSTALLED BY GC

SCOPE OF WORK: MANUFACTURE & INSTALL (1) D/F NON-ILLUMINATED EXIT SIGN



89975 Prairie Rd.
Eugene, OR 97402
541.485.5546 | esasigns.com

SHOP DRAWING #:
370121

CLIENT:
Dutch Bros - CO0907
5810 Omaha Blvd.
Colorado Springs, CO

DATE OF SHOP DRAWING:
10/31/23

PROD. DETAILS: CH

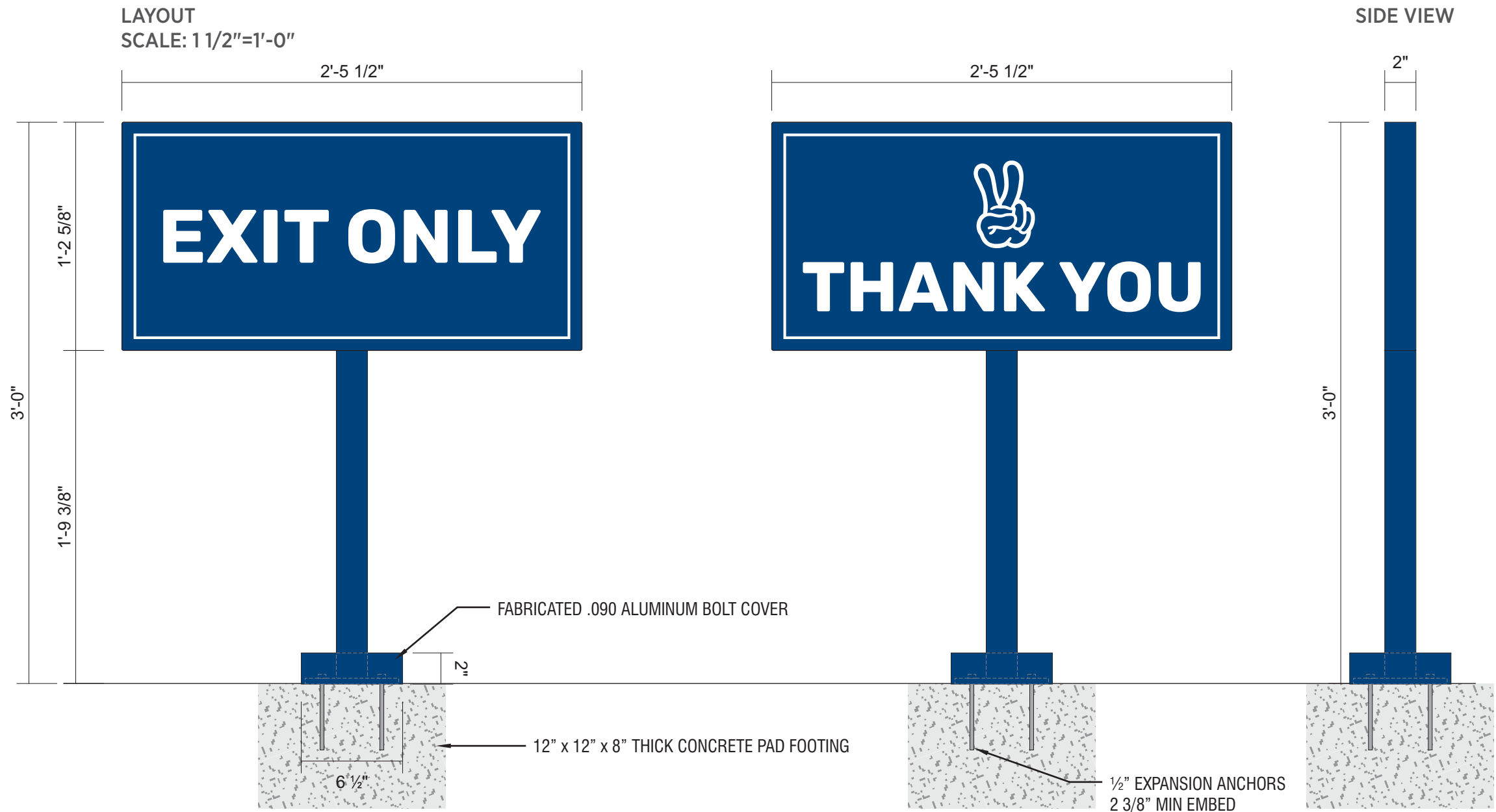
LEAD DESIGN: CH

SALES: NJ

REVISIONS:

COLOR CODE

- DB CUSTOM DARK BLUE
- WHITE



DIAMOND GRADE REFLECTIVE WHITE VINYL WITH DIGITALLY PRINTED BACKGROUND TO MATCH DB CUSTOM DARK BLUE
(SPECIAL PRODUCTION NOTE: GRAPHICS TO BE INSET FROM EDGE 1/8").
 2" X 2" SQUARE TUBE ALUMINUM FRAME & POST WITH ALUMINUM FACES & 1/4" X 6" X 6" PLATE
 FABRICATED .090 ALUMINUM BOLT COVER
 PAINT DB CUSTOM DARK BLUE
 INSTALL PLATE-MOUNT SIGN WITH 1/2" EXPANSION ANCHORS
 PAD FOOTING INSTALLED BY GC



89975 Prairie Rd.
Eugene, OR 97402
541.485.5546 | esasigns.com

SHOP DRAWING #:
37012J

CLIENT:
Dutch Bros - CO0907
5810 Omaha Blvd.
Colorado Springs, CO

DATE OF SHOP DRAWING:
10/31/23



PROD. DETAILS: CH

LEAD DESIGN: CH

SALES: NJ

REVISIONS:

COLOR CODE

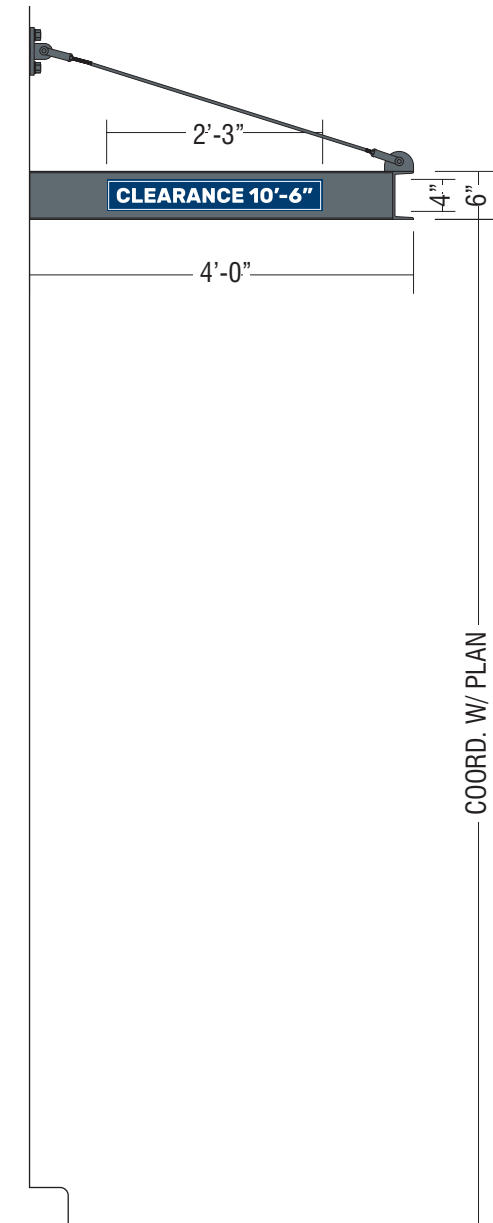
-  REFLECTIVE WHITE PSV
-  DB CUSTOM DARK BLUE

CLEARANCE SIGN
SCALE: 3"=1'-0"



3MM ACM SIGN PANEL PAINTED DB CUSTOM DARK BLUE.
WHITE REFLECTIVE VINYL COPY & BORDER (NUMBERS SHIPPED LOOSE & FIELD APPLIED).
MOUNT DIRECTLY TO ALUMINUM AWNING DRIVE-THRU ENTRANCE SIDE
WITH EXTERIOR GRADE 3M VHB TAPE.

ELEVATION
SCALE: 1/2"=1'-0"



SCOPE OF WORK: MANUFACTURE & INSTALL (1) SET OF BUILDING ADDRESS NUMBERS



89975 Prairie Rd.
Eugene, OR 97402
541.485.5546 | esasigns.com

SHOP DRAWING #:
37012K

CLIENT:
Dutch Bros - CO0907
5810 Omaha Blvd.
Colorado Springs, CO

DATE OF SHOP DRAWING:
10/31/23

PROD. DETAILS: CH

LEAD DESIGN: CH

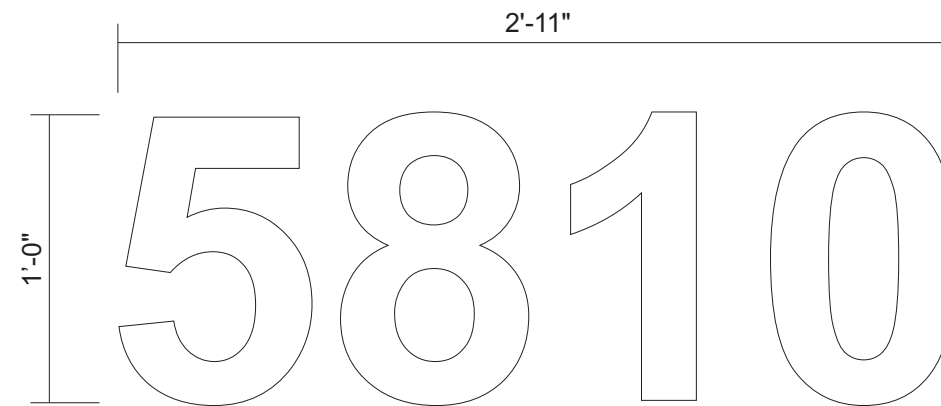
SALES: NJ

REVISIONS:

COLOR CODE

- SATIN WHITE PAINT
- REFLECTIVE WHITE VINYL

BUILDING ADDRESS
SCALE: 1 1/2"=1'-0"



ADDRESS NUMBERS:

FONT: ARIAL BOLD

MATERIAL: 1/4" THICK ALUMINUM

COLOR: PAINTED SATIN WHITE WITH 3M REFLECTIVE WHITE VINYL, INSET 1/8"

INSTALLATION: STUD MOUNTED FLUSH TO BUILDING

SIDE DETAIL
FULL SCALE

