

2015 Financial Assurance Estimate Form

(Basic form)

8/6/2015

Update the Project Name

Project Information	
The Villas at Claremont Ranch	9/12/2017
Project Name	Date

Section 1 - Grading and Erosion Control BMPs	Quantity	Units		Price		
Earthwork*	5,240.00	CY	@	\$ 5	=	\$ 26,200.00 *
Permanent Seeding* (inc. noxious weed management)	5.30	AC	@	\$ 582	=	\$ 3,084.60 *
Mulching*	5.30	AC	@	\$ 507	=	\$ 2,687.10 *
Permanent Erosion Control Blanket*		SY	@	\$ 6	=	\$ *
Temporary Erosion Control Blanket		SY	@	\$ 3	=	\$
Vehicle Tracking Control	2.00	EA	@	\$ 1,625	=	\$ 3,250.00
Safety Fence		LF	@	\$ 3	=	\$
Silt Fence	2,580.00	LF	@	\$ 4	=	\$ 10,320.00
Temporary Seeding		AC	@	\$ 485	=	\$
Temporary Mulch		AC	@	\$ 507	=	\$
Erosion Bales	9.00	EA	@	\$ 21	=	\$ 189.00
Erosion Logs		LF	@	\$ 6	=	\$
Rock Ditch Checks		EA	@	\$	=	\$
Inlet Protection		EA	@	\$ 153	=	\$
Sediment Basin		EA	@	\$ 1,625	=	\$
Concrete Washout Basin		EA	@	\$ 776	=	\$
			@	\$	=	\$
pecified items subject to defect warranty financial assurance						
Section 1 Subtotal						= \$ 45,730.70

Section 2 - Public Improvements**	Quantity	Units		Price		
- Roadway Improvements						
Construction Traffic Control		LS	@	\$	=	\$
Aggregate Base Course	3,330.00	Tons	@	\$ 18	=	\$ 59,940.00
Asphalt Pavement	3,393.00	Tons	@	\$ 65	=	\$ 220,545.00
Raised Median, Paved		SF	@	\$ 7	=	\$
Electrical Conduit, Size =		LF	@	\$ 14	=	\$
Traffic Signal, complete intersection		EA	@	\$ 250,000	=	\$
Regulatory Sign	2.00	EA	@	\$ 100	=	\$ 200.00
Advisory Sign		EA	@	\$ 100	=	\$
Guide/Street Name Sign	4.00	EA	@	\$ 100	=	\$ 400.00
Epoxy Pavement Marking	50.00	SF	@	\$ 12	=	\$ 600.00
Thermoplastic Pavement Marking		SF	@	\$ 22	=	\$
Barricade - Type 3	1.00	EA	@	\$ 115	=	\$ 115.00
Delineator (Type I)		EA	@	\$ 21	=	\$
Curb and Gutter, Type C (Ramp)		LF	@	\$ 21	=	\$
Curb and Gutter, Type A (6" Vertical)		LF	@	\$ 16	=	\$
Curb and Gutter, Type B (Median)		LF	@	\$ 13	=	\$
Pedestrian Ramp				\$	=	\$

quantities may change depending on how comments are addressed in the signage and striping plan

Cross Pan			SY	@	\$	\$53	=	\$
Curb Chase			EA	@	\$	\$1,300	=	\$
Guardrail Type 3 (W-Beam)			LF	@	\$	\$18	=	\$
Guardrail Type 7 (Concrete)			LF	@	\$	\$67	=	\$
Guardrail End Anchorage			EA	@	\$	\$1,978	=	\$
Guardrail Impact Attenuator			EA	@	\$	\$3,564	=	\$
Sound Barrier Fence			LF	@	\$	\$100	=	\$
- Storm Drain Improvements								
Concrete Box Culvert (M Standard), Size (W x H)			LF	@	\$		=	\$
Reinforced Concrete Pipe (RCP) Size 15"			LF	@	\$	\$69	=	\$
18" Reinforced Concrete Pipe			LF	@	\$	\$69	=	\$
24" Reinforced Concrete Pipe			LF	@	\$	\$84	=	\$
30" Reinforced Concrete Pipe		63.00	LF	@	\$	\$94	=	\$ 5,922.00
36" Reinforced Concrete Pipe		63.00	LF	@	\$	\$124	=	\$ 7,812.00
42" Reinforced Concrete Pipe			LF	@	\$	\$134	=	\$
48" Reinforced Concrete Pipe			LF	@	\$	\$178	=	\$
54" Reinforced Concrete Pipe			LF	@	\$	\$182	=	\$
60" Reinforced Concrete Pipe			LF	@	\$	\$209	=	\$
66" Reinforced Concrete Pipe			LF	@	\$	\$263	=	\$
72" Reinforced Concrete Pipe			LF	@	\$	\$283	=	\$
Corrugated Steel Pipe (CSP) Size			LF	@	\$		=	\$
18" Corrugated Steel Pipe			LF	@	\$	\$66	=	\$
24" Corrugated Steel Pipe			LF	@	\$	\$96	=	\$
30" Corrugated Steel Pipe			LF	@	\$	\$101	=	\$
36" Corrugated Steel Pipe			LF	@	\$	\$136	=	\$
42" Corrugated Steel Pipe			LF	@	\$	\$147	=	\$
48" Corrugated Steel Pipe			LF	@	\$	\$169	=	\$
54" Corrugated Steel Pipe			LF	@	\$	\$193	=	\$
60" Corrugated Steel Pipe			LF	@	\$	\$227	=	\$
66" Corrugated Steel Pipe			LF	@	\$	\$278	=	\$
72" Corrugated Steel Pipe			LF	@	\$	\$330	=	\$
78" Corrugated Steel Pipe			LF	@	\$	\$381	=	\$
84" Corrugated Steel Pipe			LF	@	\$	\$432	=	\$
Flared End Section (FES) RCP †			EA	@	\$	2,000	=	\$
Flared End Section (FES) CSP †		3.00	EA	@	\$	200	=	\$ 600.00
End Treatment- Headwall			EA	@	\$		=	\$
End Treatment- Wingwall			EA	@	\$		=	\$
End Treatment - Cutoff Wall			CY	@	\$	550	=	\$
Curb Inlet (Type R) L=5', Depth < 5 feet			EA	@	\$	\$3,791	=	\$
Curb Inlet (Type R) L=5', 5'-10' Depth			EA	@	\$	\$5,044	=	\$
Curb Inlet (Type R) L =5' , 10'-15' Depth			EA	@	\$	\$6,027	=	\$
Curb Inlet (Type R) L =10' , Depth < 5 feet			EA	@	\$	\$5,528	=	\$
Curb Inlet (Type R) L =10' , 5'-10' Depth			EA	@	\$	\$6,694	=	\$
Curb Inlet (Type R) L =10' , 10'-15' Depth			EA	@	\$	\$7,500	=	\$
Curb Inlet (Type R) L =15' , Depth < 5 feet			EA	@	\$	\$7,923	=	\$
Curb Inlet (Type R) L =15' , 5'-10' Depth			EA	@	\$	\$8,000	=	\$
Curb Inlet (Type R) L =15' , 10'-15' Depth			EA	@	\$	\$8,800	=	\$
Curb Inlet (Type R) L =20' , Depth < 5 feet			EA	@	\$	\$8,000	=	\$
Curb Inlet (Type R) L =20' , 5'-10' Depth			EA	@	\$	\$8,830	=	\$
Curb Inlet (Type R) L = ___' , ___' - ___' Depth			EA	@	\$		=	\$
Curb Inlet (Type R) L = ___' , ___' - ___' Depth			EA	@	\$		=	\$

Construction drawings does not show a 36" RCP

change to RCP

Grated Inlet (Type C), < 5' deep		EA	@	\$	\$3,270	=	\$
Grated Inlet (Type D), < 5' deep		EA	@	\$	\$3,908	=	\$
Storm Sewer Manhole, Box Base, Depth < 15 feet		EA	@	\$	\$8,592	=	\$
Storm Sewer Manhole, Slab Base, Depth < 15 feet		EA	@	\$	\$4,575	=	\$
Geotextile (Erosion Control)		SY	@	\$	\$5	=	\$
Soil Rip Rap, d50 Size from 6" to 24"	22.50	CY	@	\$	\$98	=	\$ 2,205.00
Rip Rap, Grouted		CY	@	\$	\$215	=	\$
Drainage Channel Construction, Size (W x H)		LF	@	\$		=	\$
Channel Lining, Concrete		CY	@	\$	\$450	=	\$
Channel Lining, Rip Rap		CY	@	\$	\$98	=	\$
Channel Lining, Grass		AC	@	\$	\$1,287	=	\$
Channel Lining, Other Stabilization		SY	@	\$	\$3	=	\$
Detention Outlet Structure		EA	@	\$	9,000	=	\$
Detention Emergency Spillway		EA	@	\$		=	\$
Permanent Water Quality Facility (Describe)		EA	@	\$		=	\$
**all items this section subject to defect warranty financial assurance. † For flared end sections, multiply pipe LF cost by 6							
					Section 2 Subtotal	=	\$ 298,339.00 **

Section 3 - Common Development Improvements (Private or District)***	Quantity	Units		Price		
- Roadway Improvements						
(Include any applicable items from above Public Improvements list, that are to be private and NOT maintained by El Paso County)			@	\$	=	\$
			@	\$	=	\$
			@	\$	=	\$
Concrete Sidewalk		SY	@	\$ 38	=	\$
Construction Traffic Control		LS	@	\$	=	\$
Aggregate Base Course		Tons	@	\$ 18	=	\$
Asphalt Pavement		Tons	@	\$ 65	=	\$
Raised Median, Paved		SF	@	\$ 7	=	\$
Electrical Conduit, Size =		LF	@	\$ 14	=	\$
Traffic Signal, complete intersection		EA	@	\$ 250,000	=	\$
Regulatory Sign		EA	@	\$ 100	=	\$
Advisory Sign		EA	@	\$ 100	=	\$
Guide/Street Name Sign		EA	@	\$ 100	=	\$
Epoxy Pavement Marking		SF	@	\$ 12	=	\$
Thermoplastic Pavement Marking		SF	@	\$ 22	=	\$
Barricade - Type 3		EA	@	\$ 115	=	\$
Delineator (Type I)		EA	@	\$ 21	=	\$
Curb and Gutter, Type C (Ramp)		LF	@	\$ 21	=	\$
Curb and Gutter, Type A (6" Vertical)		LF	@	\$ 16	=	\$
Curb and Gutter, Type B (Median)		LF	@	\$ 13	=	\$
Pedestrian Ramp		SY	@	\$ 108	=	\$
Cross Pan		SY	@	\$ 53	=	\$
Curb Chase		EA	@	\$ 1,300	=	\$
Guardrail Type 3 (W-Beam)		LF	@	\$ 18	=	\$
Guardrail Type 7 (Concrete)		LF	@	\$ 67	=	\$
Guardrail End Anchorage		EA	@	\$ 1,978	=	\$
Guardrail Impact Attenuator		EA	@	\$ 3,564	=	\$
Sound Barrier Fence		LF	@	\$ 100	=	\$
			@	\$	=	\$
			@	\$	=	\$
			@	\$	=	\$
- Storm Drain Improvements						
(Include any applicable items from above Public Improvements list, that are to be private and NOT maintained by El Paso County)			@	\$	=	\$
			@	\$	=	\$
			@	\$	=	\$
Reinforced Concrete Pipe (RCP)		LF	@	\$ 69	=	\$
30" Corrugated Steel Pipe		LF	@	\$ 101	=	\$
36" Corrugated Steel Pipe		LF	@	\$ 136	=	\$
Flared End Section (FES) †		EA	@	\$ 63	=	\$
Soil Rip Rap, d50 Size from 6" to 24"		CY	@	\$ 98	=	\$
Detention Outlet Structure		EA	@	\$ 9,000	=	\$
Detention Emergency Spillway		EA	@	\$ 2,500	=	\$
Soil Rip Rap Rundown, d50=12"		CY	@	\$ 98	=	\$
			@	\$	=	\$
			@	\$	=	\$
- Water System Improvements						
Water Main Pipe (PVC), Size 8"		LF	@	\$ 94	=	\$
Water Main Pipe (Ductile Iron), Size 8"		LF	@	\$ 137	=	\$

Gate Valves, 8"		EA	@	\$ 1,852	=	\$
Fire Hydrant Assembly w/ all valves		EA	@	\$ 6,430	=	\$
Water Service Line Installation, inc. tap & valves		EA	@	\$ 1,253	=	\$
Fire Cistern Installation, complete		EA	@	\$	=	\$
- Sanitary Sewer Improvements						
Sewer Main Pipe (PVC), Size 8"		LF	@	\$ 94	=	\$
Sanitary Sewer Manhole, Depth < 15 feet		EA	@	\$ 4,575	=	\$
Sanitary Service Line Installation, complete		EA	@	\$ 1,516	=	\$
Sanitary Sewer Lift Station, complete		EA	@	\$	=	\$
- Landscaping (If Applicable)						
(List landscaping line items and cost - usually only in case of subdivision specific condition of approval, or PUD)		EA	@	\$	=	\$
		EA	@	\$	=	\$
		EA	@	\$	=	\$
		EA	@	\$	=	\$
		EA	@	\$	=	\$
***items in this section are not subject to defect warranty financial assurance						
					Section 3 Subtotal	\$

Financial Assurance Totals	
As-built drawings - (FILL IN IF THERE ARE ANY PUBLICLY-MAINTAINED IMPROVEMENTS)	\$ 3,000.00
(Inc. survey to verify detention pond volumes.)	Construction Financial Assurance Total = \$ 347,069.70
(Sum of all Section Totals)	
Public Improvements Total* **	\$ 330,310.70
Defect Warranty Financial Assurance Total	= \$ 66,062.14
(20%of Section 2 Subtotal and 20% of identified Grading and Erosion BMP items)	

Approvals

I hereby certify that this is an accurate and complete estimate of costs for the work as shown on the approved Construction Drawings associated with the Project.

Engineer Date

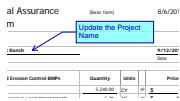
(P.E. Seal)

Approved by Owner / Applicant Date

Approved by El Paso County Engineer / ECM Administrator Date

Markup Summary

dsdlaforce (4)



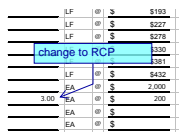
Subject: Callout
Page Label: 1
Author: dsdlaforce
Date: 8/7/2018 5:27:49 PM
Color: ■

Update the Project Name



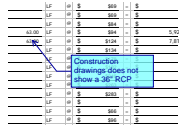
Subject: Callout
Page Label: 1
Author: dsdlaforce
Date: 8/7/2018 5:29:33 PM
Color: ■

quantities may change depending on how comments are addressed in the signage and striping plan



Subject: Callout
Page Label: 2
Author: dsdlaforce
Date: 8/7/2018 5:33:02 PM
Color: ■

change to RCP



Subject: Callout
Page Label: 2
Author: dsdlaforce
Date: 8/7/2018 5:33:31 PM
Color: ■

Construction drawings does not show a 36" RCP