

STANDARD CONSTRUCTION NOTES:

1. ALL DRAINAGE AND ROADWAY CONSTRUCTION SHALL MEET THE STANDARDS AND SPECIFICATIONS OF THE CITY OF COLORADO SPRINGS/EL PASO COUNTY DRAINAGE CRITERIA MANUAL, VOLUMES 1 AND 2, AND THE EL PASO COUNTY ENGINEERING CRITERIA MANUAL.
2. CONTRACTOR SHALL BE RESPONSIBLE FOR THE NOTIFICATION AND FIELD LOCATION OF ALL EXISTING UTILITIES, WHETHER SHOWN ON THE PLANS OR NOT, BEFORE BEGINNING CONSTRUCTION. LOCATION OF EXISTING UTILITIES SHALL BE VERIFIED BY THE CONTRACTOR PRIOR TO CONSTRUCTION. CALL 811 TO CONTACT THE UTILITY NOTIFICATION CENTER OF COLORADO (UNCC).
3. CONTRACTOR SHALL KEEP A COPY OF THESE APPROVED PLANS, THE GRADING AND EROSION CONTROL PLAN, THE STORMWATER MANAGEMENT PLAN (SWMP), THE SOILS AND GEOTECHNICAL REPORT, AND THE APPROPRIATE DESIGN AND CONSTRUCTION STANDARDS AND SPECIFICATIONS AT THE JOB SITE AT ALL TIMES, INCLUDING THE FOLLOWING:
 - a. EL PASO COUNTY ENGINEERING CRITERIA MANUAL (ECM)
 - b. CITY OF COLORADO SPRINGS/EL PASO COUNTY DRAINAGE CRITERIA MANUAL, VOLUMES 1 AND 2
 - c. COLORADO DEPARTMENT OF TRANSPORTATION (CDOT) STANDARD SPECIFICATIONS FOR ROAD AND BRIDGE CONSTRUCTION
 - d. CDOT M & S STANDARDS
4. NOTWITHSTANDING ANYTHING DEPICTED IN THESE PLANS IN WORDS OR GRAPHIC REPRESENTATION, ALL DESIGN AND CONSTRUCTION RELATED TO ROADS, STORM DRAINAGE AND EROSION CONTROL SHALL CONFORM TO THE STANDARDS AND REQUIREMENTS OF THE MOST RECENT VERSION OF THE RELEVANT ADOPTED EL PASO COUNTY STANDARDS, INCLUDING THE LAND DEVELOPMENT CODE, THE ENGINEERING CRITERIA MANUAL, THE DRAINAGE CRITERIA MANUAL, AND THE DRAINAGE CRITERIA MANUAL VOLUME 2. ANY DEVIATIONS FROM REGULATIONS AND STANDARDS MUST BE REQUESTED, AND APPROVED, IN WRITING. ANY MODIFICATIONS NECESSARY TO MEET CRITERIA AFTER-THE-FACT WILL BE ENTIRELY THE DEVELOPER'S RESPONSIBILITY TO RECTIFY.
5. IT IS THE DESIGN ENGINEER'S RESPONSIBILITY TO ACCURATELY SHOW EXISTING CONDITIONS, BOTH ONSITE AND OFFSITE, ON THE CONSTRUCTION PLANS. ANY MODIFICATIONS NECESSARY DUE TO CONFLICTS, OMISSIONS, OR CHANGED CONDITIONS WILL BE ENTIRELY THE DEVELOPER'S RESPONSIBILITY TO RECTIFY.
6. CONTRACTOR SHALL SCHEDULE A PRE-CONSTRUCTION MEETING WITH EL PASO COUNTY DEVELOPMENT SERVICES DEPARTMENT (DSD) - INSPECTIONS, PRIOR TO STARTING CONSTRUCTION.
7. IT IS THE CONTRACTOR'S RESPONSIBILITY TO UNDERSTAND THE REQUIREMENTS OF ALL JURISDICTIONAL AGENCIES AND TO OBTAIN ALL REQUIRED PERMITS, INCLUDING BUT NOT LIMITED TO EL PASO COUNTY EROSION AND STORMWATER QUALITY CONTROL PERMIT (ESQCP), REGIONAL BUILDING FLOODPLAIN DEVELOPMENT PERMIT, U.S. ARMY CORPS OF ENGINEERS-ISSUED 401 AND/OR 404 PERMITS, AND COUNTY AND STATE FUGITIVE DUST PERMITS.
8. CONTRACTOR SHALL NOT DEVIATE FROM THE PLANS WITHOUT FIRST OBTAINING WRITTEN APPROVAL FROM THE DESIGN ENGINEER AND DSD. CONTRACTOR SHALL NOTIFY THE DESIGN ENGINEER IMMEDIATELY UPON DISCOVERY OF ANY ERRORS OR INCONSISTENCIES.
9. ALL STORM DRAIN PIPE SHALL BE CLASS III RCP UNLESS OTHERWISE NOTED AND APPROVED BY DSD.
10. CONTRACTOR SHALL COORDINATE GEOTECHNICAL TESTING PER ECM STANDARDS. PAVEMENT DESIGN SHALL BE APPROVED BY EL PASO COUNTY DSD PRIOR TO PLACEMENT OF CURB AND GUTTER AND PAVEMENT.
11. ALL CONSTRUCTION TRAFFIC MUST ENTER/EXIT THE SITE AT APPROVED CONSTRUCTION ACCESS POINTS.
12. SIGHT VISIBILITY TRIANGLES AS IDENTIFIED IN THE PLANS SHALL BE PROVIDED AT ALL INTERSECTIONS. OBSTRUCTIONS GREATER THAN 18 INCHES ABOVE FLOWLINE ARE NOT ALLOWED WITHIN SIGHT TRIANGLES.
13. SIGNING AND STRIPING SHALL COMPLY WITH EL PASO COUNTY DOT AND MUTCD CRITERIA.
14. CONTRACTOR SHALL OBTAIN ANY PERMITS REQUIRED BY EL PASO COUNTY DOT, INCLUDING WORK WITHIN THE RIGHT-OF-WAY AND SPECIAL TRANSPORT PERMITS.
15. THE LIMITS OF CONSTRUCTION SHALL REMAIN WITHIN THE PROPERTY LINE UNLESS OTHERWISE NOTED. THE OWNER/DEVELOPER SHALL OBTAIN WRITTEN PERMISSION AND EASEMENTS, WHERE REQUIRED, FROM ADJOINING PROPERTY OWNER(S) PRIOR TO ANY OFF-SITE DISTURBANCE, GRADING, OR CONSTRUCTION.

GRADING NOTES:

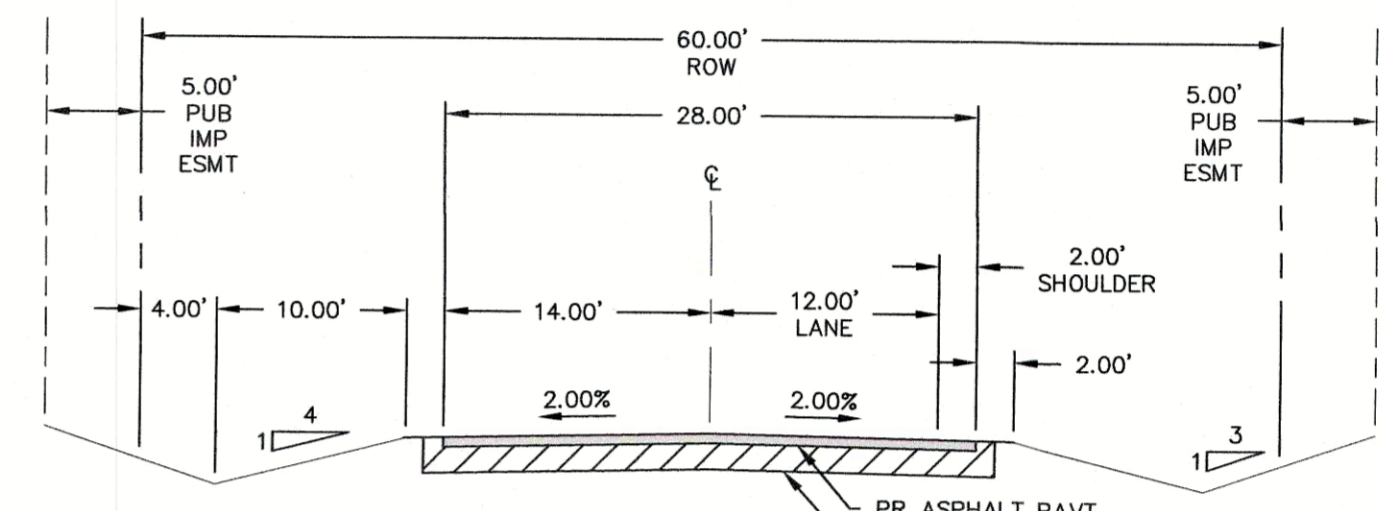
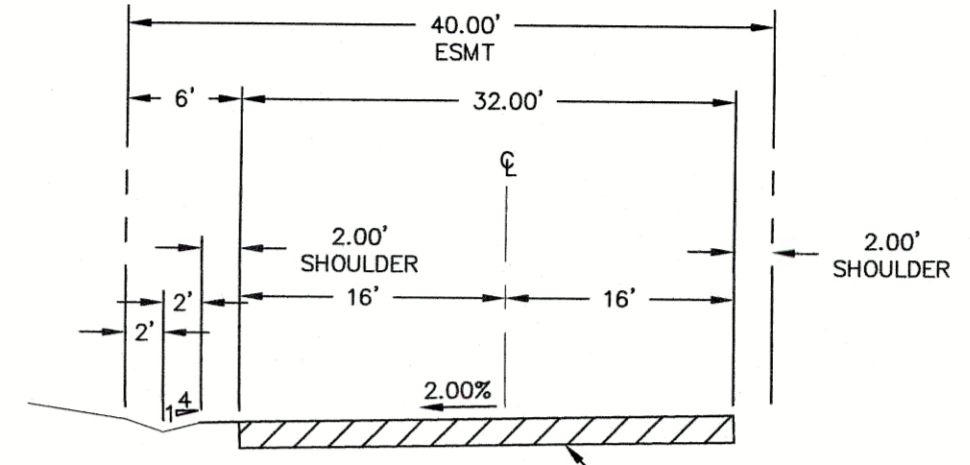
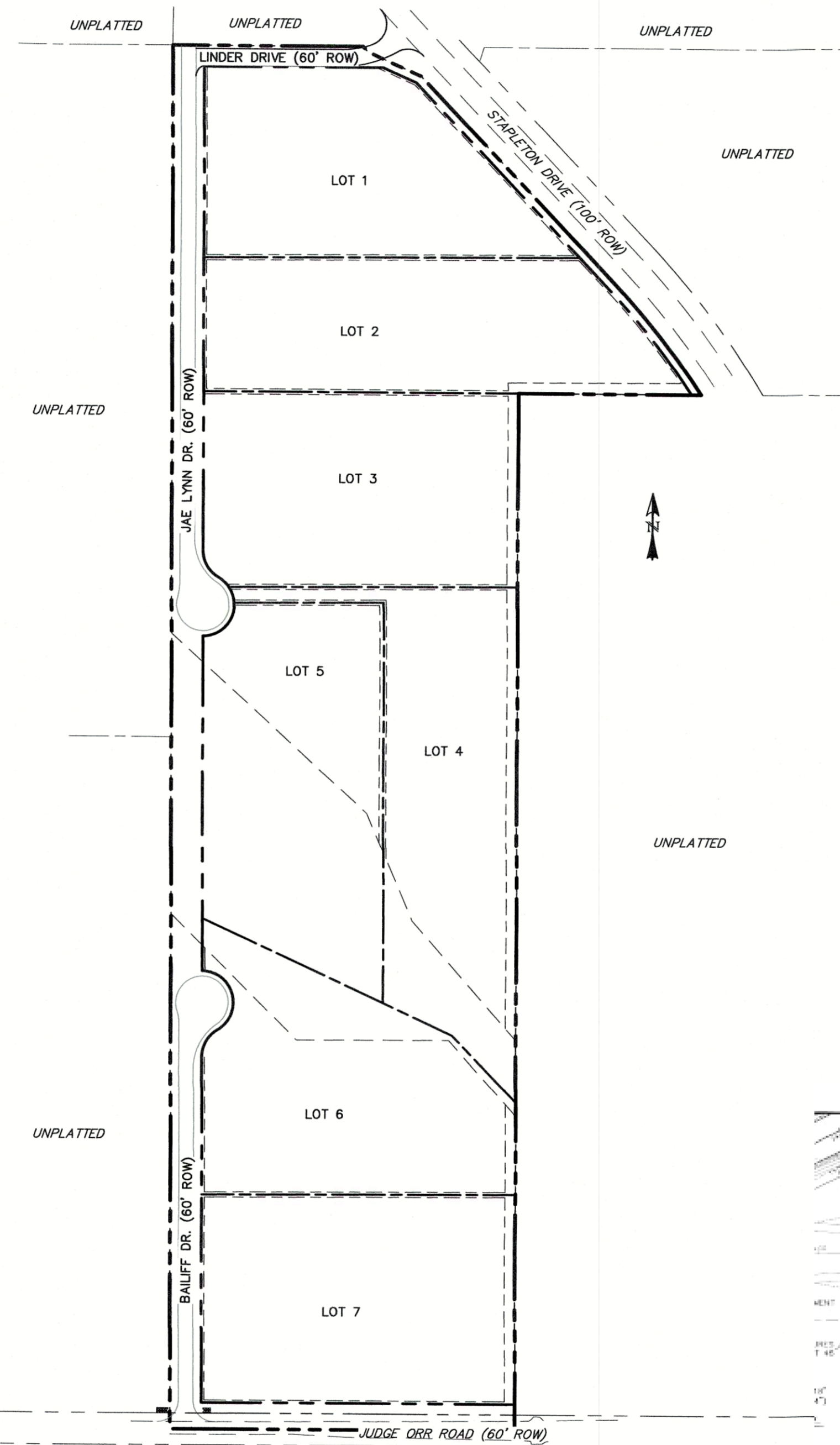
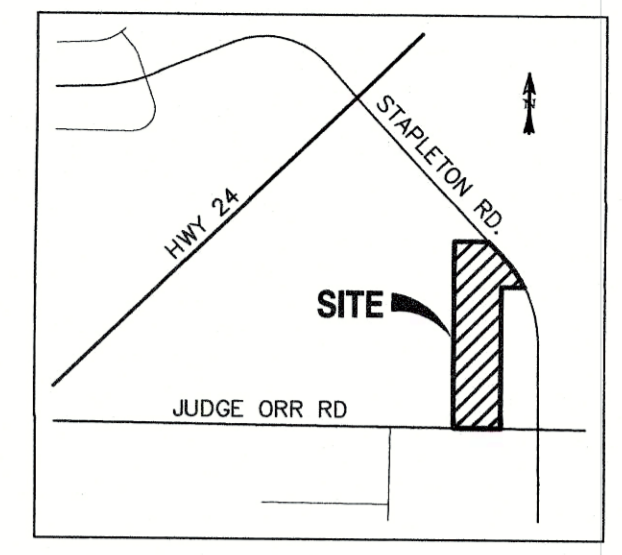
1. CONSTRUCTION MAY NOT COMMENCE UNTIL A CONSTRUCTION PERMIT IS OBTAINED FROM DEVELOPMENT SERVICES AND A PRECONSTRUCTION CONFERENCE IS HELD WITH DEVELOPMENT SERVICES INSPECTIONS.
2. STORMWATER DISCHARGES FROM CONSTRUCTION SITES SHALL NOT CAUSE OR THREATEN TO CAUSE POLLUTION, CONTAMINATION, OR DEGRADATION OF STATE WATERS. ALL WORK AND EARTH DISTURBANCE SHALL BE DONE IN A MANNER THAT MINIMIZES POLLUTION OF ANY ON-SITE OR OFF-SITE WATERS, INCLUDING WETLANDS.
3. NOTWITHSTANDING ANYTHING DEPICTED IN THESE PLANS IN WORDS OR GRAPHIC REPRESENTATION, ALL DESIGN AND CONSTRUCTION RELATED TO ROADS, STORM DRAINAGE AND EROSION CONTROL SHALL CONFORM TO THE STANDARDS AND REQUIREMENTS OF THE MOST RECENT VERSION OF THE RELEVANT ADOPTED EL PASO COUNTY STANDARDS, INCLUDING THE LAND DEVELOPMENT CODE, THE ENGINEERING CRITERIA MANUAL, THE DRAINAGE CRITERIA MANUAL, AND THE DRAINAGE CRITERIA MANUAL VOLUME 2. ANY DEVIATIONS FROM REGULATIONS AND STANDARDS MUST BE REQUESTED, AND APPROVED, IN WRITING.
4. A SEPARATE STORMWATER MANAGEMENT PLAN (SWMP) FOR THIS PROJECT SHALL BE COMPLETED AND AN EROSION AND STORMWATER QUALITY CONTROL PERMIT (ESQCP) ISSUED PRIOR TO COMMENCING CONSTRUCTION. DURING CONSTRUCTION THE SWMP IS THE RESPONSIBILITY OF THE DESIGNATED STORMWATER MANAGER SHALL BE LOCATED ON SITE AT ALL TIMES AND SHALL BE KEPT UP TO DATE WITH WORK PROGRESS AND CHANGES IN THE FIELD.
5. ONCE THE ESQCP HAS BEEN ISSUED, THE CONTRACTOR MAY INSTALL THE INITIAL STAGE EROSION AND SEDIMENT CONTROL BMPS AS INDICATED ON THE DEC. A PRECONSTRUCTION MEETING BETWEEN THE CONTRACTOR, ENGINEER, AND EL PASO COUNTY WILL BE HELD PRIOR TO ANY CONSTRUCTION. IT IS THE RESPONSIBILITY OF THE APPLICANT TO COORDINATE THE MEETING TIME AND PLACE WITH COUNTY DSD INSPECTIONS STAFF.
6. SOIL EROSION CONTROL MEASURES FOR ALL SLOPES, CHANNELS, DITCHES, OR ANY DISTURBED LAND AREA SHALL BE COMPLETED WITHIN 21 CALENDAR DAYS AFTER FINAL GRADING, OR FINAL EARTH DISTURBANCE, HAS BEEN COMPLETED. DISTURBED AREAS AND STOCKPILES WHICH ARE NOT AT FINAL GRADE BUT WILL REMAIN DORMANT FOR LONGER THAN 30 DAYS SHALL ALSO BE MULCHED WITHIN 21 DAYS AFTER INTERIM GRADING. AN AREA THAT IS GOING TO REMAIN IN AN INTERIM STATE FOR MORE THAN 60 DAYS SHALL ALSO BE SEEDED. ALL TEMPORARY SOIL EROSION CONTROL MEASURES AND BMPS SHALL BE MAINTAINED UNTIL PERMANENT SOIL EROSION CONTROL MEASURES ARE IMPLEMENTED AND ESTABLISHED.
7. TEMPORARY SOIL EROSION CONTROL FACILITIES SHALL BE REMOVED AND EARTH DISTURBANCE AREAS GRADED AND STABILIZED WITH PERMANENT SOIL EROSION CONTROL MEASURES PURSUANT TO STANDARDS AND SPECIFICATION PRESCRIBED IN THE DCM VOLUME I AND THE ENGINEERING CRITERIA MANUAL (ECM) APPENDIX I.
8. ALL PERSONS ENGAGED IN EARTH DISTURBANCE SHALL IMPLEMENT AND MAINTAIN ACCEPTABLE SOIL EROSION AND SEDIMENT CONTROL MEASURES INCLUDING BMPS IN CONFORMANCE WITH THE EROSION CONTROL TECHNICAL STANDARDS OF THE DRAINAGE CRITERIA MANUAL (DCM) VOLUME II AND IN ACCORDANCE WITH THE STORMWATER MANAGEMENT PLAN (SWMP).
9. ALL TEMPORARY EROSION CONTROL FACILITIES INCLUDING BMPS AND ALL PERMANENT FACILITIES INTENDED TO CONTROL EROSION OF ANY EARTH DISTURBANCE OPERATIONS, SHALL BE INSTALLED AS DEFINED IN THE APPROVED PLANS, THE SWMP AND THE DCM VOLUME II AND MAINTAINED THROUGHOUT THE DURATION OF THE EARTH DISTURBANCE OPERATION.
10. ANY EARTH DISTURBANCE SHALL BE CONDUCTED IN SUCH A MANNER SO AS TO EFFECTIVELY REDUCE ACCELERATED SOIL EROSION AND RESULTING SEDIMENTATION. ALL DISTURBANCES SHALL BE DESIGNED, CONSTRUCTED, AND COMPLETED SO THAT THE EXPOSED AREA OF ANY DISTURBED LAND SHALL BE LIMITED TO THE SHORTEST PRACTICAL PERIOD OF TIME.
11. ANY TEMPORARY OR PERMANENT FACILITY DESIGNED AND CONSTRUCTED FOR THE CONVEYANCE OF STORMWATER AROUND, THROUGH, OR FROM THE EARTH DISTURBANCE AREA SHALL BE DESIGNED TO LIMIT THE DISCHARGE TO A NON-EROSIVE VELOCITY.
12. CONCRETE WASH WATER SHALL BE CONTAINED AND DISPOSED OF IN ACCORDANCE WITH THE SWMP. NO WASH WATER SHALL BE DISCHARGED TO OR ALLOWED TO RUNOFF TO STATE WATERS, INCLUDING ANY SURFACE OR SUBSURFACE STORM DRAINAGE SYSTEM OR FACILITIES.
13. EROSION CONTROL BLANKETING SHALL BE USED ON SLOPES STEEPER THAN 3:1.
14. BUILDING, CONSTRUCTION, EXCAVATION, OR OTHER WASTE MATERIALS SHALL NOT BE TEMPORARILY PLACED OR STORED IN THE STREET, ALLEY, OR OTHER PUBLIC WAY, UNLESS IN ACCORDANCE WITH AN APPROVED TRAFFIC CONTROL PLAN. BMP'S MAY BE REQUIRED BY EL PASO COUNTY ENGINEERING IF DEEMED NECESSARY, BASED ON SPECIFIC CONDITIONS AND CIRCUMSTANCES.
15. VEHICLE TRACKING OF SOILS AND CONSTRUCTION DEBRIS OFF-SITE SHALL BE MINIMIZED. MATERIALS TRACKED OFFSITE SHALL BE CLEANED UP AND PROPERLY DISPOSED OF IMMEDIATELY.
16. CONTRACTOR SHALL BE RESPONSIBLE FOR THE REMOVAL OF ALL WASTES FROM THE CONSTRUCTION SITE FOR DISPOSAL IN ACCORDANCE WITH LOCAL AND STATE REGULATORY REQUIREMENTS. NO CONSTRUCTION DEBRIS, TREE SLASH, BUILDING MATERIAL WASTES OR UNUSED BUILDING MATERIALS SHALL BE BURIED, DUMPED, OR DISCHARGED AT THE SITE.
17. THE OWNER, SITE DEVELOPER, CONTRACTOR, AND/OR THEIR AUTHORIZED AGENTS SHALL BE RESPONSIBLE FOR THE REMOVAL OF ALL CONSTRUCTION DEBRIS, DIRT, TRASH, ROCK, SEDIMENT, AND SAND THAT MAY ACCUMULATE IN THE STORM SEWER OR OTHER DRAINAGE CONVEYANCE SYSTEM AND STORMWATER APPURTENANCES AS A RESULT OF SITE DEVELOPMENT.
18. THE QUANTITY OF MATERIALS STORED ON THE PROJECT SITE SHALL BE LIMITED, AS MUCH AS PRACTICAL, TO THAT QUANTITY REQUIRED TO PERFORM THE WORK IN AN ORDERLY SEQUENCE. ALL MATERIALS STORED ON-SITE SHALL BE STORED IN A NEAT, ORDERLY MANNER, IN THEIR ORIGINAL CONTAINERS, WITH ORIGINAL MANUFACTURER'S LABELS.
19. NO CHEMICALS ARE TO BE USED BY THE CONTRACTOR, WHICH HAVE THE POTENTIAL TO BE RELEASED IN STORMWATER UNLESS PERMISSION FOR THE USE OF A SPECIFIC CHEMICAL IS GRANTED IN WRITING BY THE ECM ADMINISTRATOR. IN GRANTING THE USE OF SUCH CHEMICALS, SPECIAL CONDITIONS AND MONITORING MAY BE REQUIRED.
20. BULK STORAGE STRUCTURES FOR PETROLEUM PRODUCTS AND OTHER CHEMICALS SHALL HAVE ADEQUATE PROTECTION SO AS TO CONTAIN ALL SPILLS AND PREVENT ANY SPILLED MATERIAL FROM ENTERING STATE WATERS, INCLUDING ANY SURFACE OR SUBSURFACE STORM DRAINAGE SYSTEM OR FACILITIES.
21. NO PERSON SHALL CAUSE THE IMPEDIMENT OF STORMWATER FLOW IN THE FLOW LINE OF THE CURB AND GUTTER OR IN THE DITCHLINE.
22. INDIVIDUALS SHALL COMPLY WITH THE "COLORADO WATER QUALITY CONTROL ACT" (TITLE 25, ARTICLE 8, CRS), AND THE "CLEAN WATER ACT" (33 USC 1344), IN ADDITION TO THE REQUIREMENTS INCLUDED IN THE DCM VOLUME II AND THE ECM APPENDIX I. ALL APPROPRIATE PERMITS MUST BE OBTAINED BY THE CONTRACTOR PRIOR TO CONSTRUCTION (NPDES, FLOODPLAIN, 404, FUGITIVE DUST, ETC.). IN THE EVENT OF CONFLICTS BETWEEN THESE REQUIREMENTS AND LAWS, RULES, OR REGULATIONS OF OTHER FEDERAL, STATE, OR COUNTY AGENCIES, THE MORE RESTRICTIVE LAWS, RULES, OR REGULATIONS SHALL APPLY.
23. ALL CONSTRUCTION TRAFFIC MUST ENTER/EXIT THE SITE AT APPROVED CONSTRUCTION ACCESS POINTS.
24. PRIOR TO ACTUAL CONSTRUCTION THE PERMITTEE SHALL VERIFY THE LOCATION OF EXISTING UTILITIES.
25. A WATER SOURCE SHALL BE AVAILABLE ON SITE DURING EARTHWORK OPERATIONS AND UTILIZED AS REQUIRED TO MINIMIZE DUST FROM EARTHWORK EQUIPMENT AND WIND.
26. THE SOILS REPORT FOR THIS SITE HAS BEEN PREPARED BY ENTECH ENGINEERING, INC. (DATED: APRIL 24, 2017) AND SHALL BE CONSIDERED A PART OF THESE PLANS.
27. AT LEAST TEN DAYS PRIOR TO THE ANTICIPATED START OF CONSTRUCTION, FOR PROJECTS THAT WILL DISTURB 1 ACRE OR MORE, THE OWNER OR OPERATOR OF CONSTRUCTION ACTIVITY SHALL SUBMIT A PERMIT APPLICATION FOR STORMWATER DISCHARGE TO THE COLORADO DEPARTMENT OF PUBLIC HEALTH AND ENVIRONMENT, WATER QUALITY DIVISION. THE APPLICATION CONTAINS CERTIFICATION OF COMPLETION OF A STORMWATER MANAGEMENT PLAN (SWMP), OF WHICH THIS GRADING AND EROSION CONTROL PLAN MAY BE A PART. FOR INFORMATION OR APPLICATION MATERIALS CONTACT:
COLORADO DEPARTMENT OF PUBLIC HEALTH AND ENVIRONMENT
WATER QUALITY CONTROL DIVISION
WOOD - PERMITS
4300 CHERRY CREEK DRIVE SOUTH
DENVER, CO 80246-1530
ATTN: PERMITS UNIT

JUDGE ORR RANCHETTES

CONSTRUCTION DOCUMENTS

SECTION 33, TWP 12 S, R 64 W OF 6TH PRINCIPAL MERIDIAN

EL PASO COUNTY, COLORADO



CONSTRUCTION PLANS AND SPECIFICATIONS ENGINEERS STATEMENT:

THESE DETAILED PLANS AND SPECIFICATIONS WERE PREPARED UNDER MY DIRECTION AND SUPERVISION. SAID DETAILED PLANS AND SPECIFICATIONS HAVE BEEN PREPARED ACCORDING TO THE CRITERIA ESTABLISHED BY THE CITY/COUNTY FOR DETAILED DRAINAGE PLANS AND SPECIFICATIONS, AND SAID DETAILED PLANS AND SPECIFICATIONS ARE IN CONFORMITY WITH THE MASTER PLAN OF THE DRAINAGE BASIN. SAID DETAILED PLANS AND SPECIFICATIONS MEET THE PURPOSES WHICH THE PARTICULAR DRAINAGE FACILITY(S) IS DESIGNED. I ACCEPT RESPONSIBILITY FOR ANY LIABILITY CAUSED BY ANY NEGLIGENT ACTS, ERROR OR OMISSIONS ON MY PART IN PREPARATION OF THE DETAILED PLANS AND SPECIFICATIONS.



OWNER STATEMENT:

THE OWNER WILL COMPLY WITH THE REQUIREMENTS OF THE EROSION CONTROL PLAN.

1/30/19
DATE

30 JANUARY 2019
DATE

Y APPROVAL:

NEW IS PROVIDED ONLY FOR GENERAL CONFORMANCE WITH COUNTY DESIGN CRITERIA. THE COUNTY IS NOT RESPONSIBLE FOR THE ACCURACY AND ADEQUACY OF THE DESIGN, DIMENSIONS, AND/OR ELEVATIONS WHICH SHALL BE THE JOB SITE. THE COUNTY THROUGH THE APPROVAL OF THIS DOCUMENT ASSUMES NO RESPONSIBILITY FOR THE ACCURACY AND ADEQUACY OF THIS DOCUMENT.

IN ACCORDANCE WITH THE REQUIREMENTS OF THE EL PASO COUNTY LAND DEVELOPMENT CODE, DRAINAGE CRITERIA MANUAL VOLUME I & 2, AND ENGINEERING CRITERIA MANUAL AS AMENDED.

WITH ECM SECTION 1.12, THESE CONSTRUCTION DOCUMENTS WILL BE VALID FOR CONSTRUCTION FOR A PERIOD OF 180 DAYS FROM THE DATE SIGNED BY THE EL PASO COUNTY ENGINEER. IF CONSTRUCTION HAS NOT STARTED WITHIN 180 DAYS, THE PLANS WILL NEED TO BE RESUBMITTED FOR APPROVAL, INCLUDING PAYMENT OF REVIEW FEES AND COMMUNITY DEVELOPMENT DIRECTORS DISCRETION.

LET INDEX:

- | | |
|---|------|
| 1 | OF 7 |
| 2 | OF 7 |
| 3 | OF 7 |
| 4 | OF 7 |
| 5 | OF 7 |
| 6 | OF 7 |
| 7 | OF 7 |

PCD FILE NO: SP-17-021

LEGEND

EXISTING	(E)
PROPOSED	(P)
PUBLIC	PUB
IMPROVEMENT	IMP
BEGIN TRANSITION	BT
END TRANSITION	ET
CURB RETURN	CR
POINT OF CURVATURE	PC
POINT OF TANGENCY	PT
POINT ON CURVE	POC
TYPE 'A' CURB AND GUTTER	[A]
(E)	BOUNDARY
(P)	RIGHT-OF-WAY
PUB	LOT LINE
IMP	EASEMENT
BT	(E) CONTOUR, INDEX
ET	(E) CONTOUR
CR	(P) CONTOUR, INDEX
PC	(P) CONTOUR
PT	(P) STORM SEWER, INLET, MH
POC	
[A]	

SITE MAP

SCALE: N.T.S.

BENCHMARK

BENCHMARK DERIVED FROM THE DRAINAGE STRUCTURE LOCATED UNDER CURTIS ROAD APPROXIMATELY 290 FEET SOUTH OF JUDGE ORR ROAD. THE FLOWLINE OF THE WEST END AT THE HEADWALL IS EL = 6786.36 (DATUM UNKNOWN), ACCORDING TO SHEET NUMBER 33, STAPLETON DRIVE EXTENSION, STAPLETON DRIVE CBC PLAN AND PROFILE, PROJECT NO. 229036, EL PASO COUNTY PUBLIC SERVICES DEPARTMENT, DATED 11/20/2013.

1. If this is based on the Stapleton Drive Extension plans. Use the Datum from the plans.
2. Also if the referenced CBC is the one attached. Then this is located north of Judge Orr Road at the east end of the CBC. The elevation noted is 6786.37.
3. The referenced sheet number also appears to be incorrect.

REV.	DESCRIPTION	DATE
1	ADDRESS AGENCY COMMENTS	10/23/18
2	ADDRESS AGENCY COMMENTS	12/18/18



BASIS OF BEARINGS

THE BASIS OF BEARING FOR THIS SURVEY IS THE SOUTHWESTERLY RIGHT-OF-WAY OF STAPLETON ROAD AS MONUMENTED BY REBAR AND CAP COLORADO PLS NO. 22573 AT BOTH ENDS AS SHOWN HEREON. SAID LINE BEARS N43°33'49"W AS SHOWN ON EL PASO COUNTY PROJECT NUMBER 229036, PARCEL 10, DATED 12/18/13, BY EL PASO COUNTY PUBLIC SERVICES DEPARTMENT.

PREPARED BY

JOHN JEN
COLORADO SPRING

JUDGE ORR RANCHETTES

CONSTRUCTION DRAWINGS

DESIGNED BY:	MGP	DRAWN BY:	MGP
SCALE:	N/A	DATE:	06/18/18
JOB NUMBER	16-093	SHEET	1 OF 6

BASIC GRADING, EROSION AND STORMWATER QUALITY REQUIREMENTS AND GENERAL PROHIBITIONS:

- *INFORMATION TAKEN FROM THE EL PASO COUNTY DRAINAGE CRITERIA MANUAL VOLUME 2, HEREBY REFERRED TO AS THE "MANUAL."
- STORMWATER DISCHARGES FROM CONSTRUCTION SITES SHALL NOT CAUSE OR THREATEN TO CAUSE POLLUTION, CONTAMINATION, OR DEGRADATION OF STATE WATERS.
- CONCRETE WASH WATER SHALL NOT BE DISCHARGED TO OR ALLOWED TO RUNOFF TO STATE WATERS, INCLUDING ANY SURFACE OR SUBSURFACE STORM DRAINAGE SYSTEM FACILITIES.
- BUILDING, CONSTRUCTION, EXCAVATION, OR OTHER WASTE MATERIALS SHALL NOT BE TEMPORARILY PLACED OR STORED IN THE STREET, ALLEY, OR OTHER PUBLIC WAY, UNLESS IN ACCORDANCE WITH AN APPROVED TRAFFIC CONTROL PLAN. BMP'S MAY BE REQUIRED BY COUNTY ENGINEERING IF DEEMED NECESSARY, BASED ON SPECIFIC CONDITIONS AND CIRCUMSTANCES (E.G., ESTIMATED TIME OF EXPOSURE, SEASON OF THE YEAR, ETC.).
- VEHICLE TRACKING OF SOILS OFF-SITE SHALL BE MINIMIZED.
- ALL WASTES COMPOSED OF BUILDING MATERIALS MUST BE REMOVED FROM THE CONSTRUCTION SITE FOR DISPOSAL IN ACCORDANCE WITH LOCAL AND STATE REGULATORY REQUIREMENTS. NO BUILDING MATERIAL WASTES OR UNUSED BUILDING MATERIALS SHALL BE BURIED, DUMPED, OR DISCHARGED AT THE SITE.
- NO CHEMICALS ARE TO BE USED BY THE CONTRACTOR, WHICH HAVE THE POTENTIAL TO BE RELEASED IN STORMWATER UNLESS PERMISSION FOR THE USE OF A SPECIFIC CHEMICAL IS GRANTED IN WRITING BY THE COUNTY ENGINEER. IN GRANTING THE USE OF SUCH CHEMICALS, SPECIAL CONDITIONS AND MONITORING MAY BE REQUIRED.
- BULK STORAGE STRUCTURES FOR PETROLEUM PRODUCTS AND OTHER CHEMICALS SHALL HAVE ADEQUATE PROTECTION SO AS TO CONTAIN ALL SPILLS AND PREVENT ANY SPILLED MATERIAL FROM ENTERING STATE WATERS, INCLUDING ANY SURFACE OR SUBSURFACE STORM DRAINAGE SYSTEM OR FACILITIES.
- ALL PERSONS ENGAGED IN EARTH DISTURBANCE SHALL IMPLEMENT AND MAINTAIN ACCEPTABLE SOIL EROSION AND SEDIMENT CONTROL MEASURES INCLUDING BMP'S IN CONFORMANCE WITH THE EROSION CONTROL TECHNICAL STANDARDS OF THE MANUAL AND IN ACCORDANCE WITH THE EROSION AND STORMWATER QUALITY CONTROL PLAN APPROVED BY THE COUNTY OF EL PASO, IF REQUIRED.
- ALL TEMPORARY EROSION CONTROL FACILITIES INCLUDING BMP'S AND ALL PERMANENT FACILITIES INTENDED TO CONTROL EROSION OF ANY EARTH DISTURBANCE OPERATIONS, SHALL BE INSTALLED AS DEFINED IN THE APPROVED PLANS AND THE MANUAL, AND MAINTAINED THROUGHOUT THE DURATION OF THE EARTH DISTURBANCE OPERATION. THE INSTALLATION OF THE FIRST LEVEL OF TEMPORARY EROSION CONTROL FACILITIES AND BMP'S SHALL BE INSTALLED AND INSPECTED PRIOR TO ANY EARTH DISTURBANCE OPERATIONS TAKING PLACE.
- ANY EARTH DISTURBANCE SHALL BE CONDUCTED IN SUCH A MANNER SO AS TO EFFECTIVELY REDUCE ACCELERATED SOIL EROSION AND RESULTING SEDIMENTATION.
- ALL EARTH DISTURBANCES SHALL BE DESIGNED, CONSTRUCTED, AND COMPLETED IN SUCH A MANNER SO THAT THE EXPOSED AREA OF ANY DISTURBED LAND SHALL BE LIMITED TO THE SHORTEST PRACTICAL PERIOD OF TIME.
- ALL WORK AND EARTH DISTURBANCE SHALL BE DONE IN A MANNER THAT MINIMIZES POLLUTION OF ON-SITE OR OFF-SITE WATERS, INCLUDING WETLANDS.
- SUSPENDED SEDIMENT CAUSED BY ACCELERATED SOIL EROSION SHALL BE MINIMIZED IN RUNOFF WATER BEFORE IT LEAVES THE SITE OF THE EARTH DISTURBANCE.
- ANY TEMPORARY OR PERMANENT FACILITY DESIGNED AND CONSTRUCTED FOR THE CONVEYANCE OF STORMWATER AROUND, THROUGH, OR FROM THE EARTH DISTURBANCE AREA SHALL BE DESIGNED TO LIMIT THE DISCHARGE TO A NON-EROSIVE VELOCITY.
- TEMPORARY SOIL EROSION CONTROL FACILITIES SHALL BE REMOVED AND EARTH DISTURBANCE AREAS GRADED AND STABILIZED WITH PERMANENT SOIL EROSION CONTROL MEASURES PURSUANT TO THE STANDARDS AND SPECIFICATIONS PRESCRIBED IN THE MANUAL, AND IN ACCORDANCE WITH THE PERMANENT EROSION CONTROL FEATURES SHOWN ON THE EROSION AND STORMWATER QUALITY CONTROL PLANS APPROVED BY THE COUNTY OF EL PASO, IF REQUIRED.
- SOIL EROSION CONTROL MEASURES FOR ALL SLOPES, CHANNELS, DITCHES, OR ANY DISTURBED LAND AREA SHALL BE COMPLETED WITHIN TWENTY-ONE (21) CALENDAR DAYS AFTER FINAL GRADING OR FINAL EARTH DISTURBANCE HAS BEEN COMPLETED. DISTURBED AREAS AND STOCKPILES WHICH ARE NOT AT FINAL GRADE BUT WILL REMAIN DORMANT FOR LONGER THAN 30 DAYS SHALL ALSO BE MULCHED WITHIN 21 DAYS AFTER INTERIM GRADING. AN AREA THAT IS GOING TO REMAIN IN AN INTERIM STATE FOR MORE THAN 60 DAYS SHALL ALSO BE SEEDED. ALL TEMPORARY SOIL EROSION CONTROL MEASURES AND BMP'S SHALL BE MAINTAINED UNTIL PERMANENT SOIL EROSION CONTROL MEASURES ARE IMPLEMENTED.
- NO PERSON SHALL CAUSE, PERMIT, OR CONTRIBUTE TO THE DISCHARGE INTO THE MUNICIPAL SEWER STORM POLLUTANTS THAT COULD CAUSE THE COUNTY OF EL PASO TO BE IN VIOLATION OF ITS COLORADO DISCHARGE PERMIT SYSTEM MUNICIPAL STORMWATER DISCHARGE PERMIT.
- THE OWNER, SITE DEVELOPER, CONTRACTOR, AND/OR THEIR AUTHORIZED AGENTS SHALL BE RESPONSIBLE FOR THE REMOVAL OF ALL CONSTRUCTION DEBRIS, DIRT, TRASH, ROCK, SEDIMENT, AND SAND THAT MAY ACCUMULATE IN THE STORM SEWER OR OTHER DRAINAGE CONVEYANCE SYSTEM AND STORMWATER APPURTENANCES AS A RESULT OF SITE DEVELOPMENT.
- NO PERSON SHALL CAUSE THE IMPEDIMENT OF STORMWATER FLOW IN THE FLOW LINE OF THE CURB AND GUTTER, INCLUDING THE TEMPORARY OR PERMANENT RAMPING WITH MATERIALS FOR VEHICLE ACCESS.
- INDIVIDUALS SHALL COMPLY WITH THE "COLORADO WATER QUALITY CONTROL ACT" (TITLE 25, ARTICLE 8, CRS), AND THE "CLEAN WATER ACT" (33 USC 1344), REGULATIONS PROMULGATED, CERTIFICATIONS OR PERMITS ISSUED, IN ADDITION TO THE REQUIREMENTS INCLUDED IN THE MANUAL. IN THE EVENT OF CONFLICTS BETWEEN THESE REQUIREMENTS AND WATER QUALITY CONTROL LAWS, RULES, OR REGULATIONS OF OTHER FEDERAL OR STATE AGENCIES, THE MORE RESTRICTIVE LAWS, RULES, OR REGULATIONS SHALL APPLY.
- THE QUANTITY OF MATERIALS STORED ON THE PROJECT SITE SHALL BE LIMITED, AS MUCH AS PRACTICAL, TO THAT QUANTITY REQUIRED TO PERFORM WORK IN AN ORDERLY SEQUENCE. ALL MATERIALS STORED ON-SITE SHALL BE STORED IN A NEAT, ORDERLY MANNER, IN THEIR ORIGINAL CONTAINERS, WITH ORIGINAL MANUFACTURER'S LABELS. MATERIALS SHALL NOT BE STORED IN A LOCATION WHERE THEY MAY BE CARRIED BY STORMWATER RUNOFF INTO A STATE WATER AT ANY TIME.
- SPILL PREVENTION AND CONTAINMENT MEASURES SHALL BE USED AT STORAGE, AND EQUIPMENT FUELING AND SERVICING AREAS TO PREVENT THE POLLUTION OF ANY STATE WATERS, INCLUDING WETLANDS. ALL SPILLS SHALL BE CLEANED UP IMMEDIATELY AFTER DISCOVERY, OR CONTAINED UNTIL APPROPRIATE CLEANUP METHODS CAN BE EMPLOYED. MANUFACTURER'S RECOMMENDED METHODS FOR SPILL CLEANUP SHALL BE FOLLOWED, ALONG WITH PROPER DISPOSAL METHODS.

SEEDING GUIDELINES

- SEED PREPARATION**
THE SEED SHOULD BE WELL-SETTLED AND FIRM, BUT FRAGILE ENOUGH THAT THE SEED CAN BE PLACED AT THE SPECIFIED DEPTHS. COMPETITIVE STANDS OF WEEDS THAT ARE PRESENT BEFORE SEEDING MUST BE CONTROLLED BY SHALLOW TILLAGE OR BY APPLICATION OF HERBICIDES. SOILS THAT HAVE BEEN OVER-COMPACTED BY TRAFFIC OR EQUIPMENT, ESPECIALLY WHEN WET, SHOULD BE TILLED TO BREAK UP ROOTING-RESTRICTIVE LAYERS, THEN HARROWED, ROLLED, OR PACKED TO PREPARE THE REQUIRED FIRM SEEDBED.
- FERTILIZER**
FERTILIZER SHOULD BE APPLIED AT A RATE OF 50 POUNDS OF AVAILABLE NITROGEN PER ACRE AND 40 POUNDS OF AVAILABLE PHOSPHATE PER ACRE. THE TIME OF APPLICATION SHOULD BE IMMEDIATELY PRIOR TO SEEDING, AT THE TIME OF SEEDING, OR IMMEDIATELY FOLLOWING SEEDING, DEPENDING ON THE KIND OF FERTILIZER AND TYPE OF EQUIPMENT USED.
- SEEDING**
SEED SHOULD BE PLANTED WITH A GRASS DRILL ON ALL SLOPES OF 3:36 (3:1) OR FLATTER. SEED MAY BE BROADCAST BY HAND, BY MECHANICAL SPREADERS, OR BY HYDRAULIC EQUIPMENT ON AREAS THAT ARE SMALL, TOO STEEP, OR NOT ACCESSIBLE FOR SEED DRILL OPERATIONS. SEED PLANTED WITH A DRILL SHOULD BE COVERED WITH SOIL TO A DEPTH OF 1/4 TO 3/4 INCH. SEED PLANTED BY THE BROADCAST METHOD SHALL BE INCORPORATED INTO THE SOIL SURFACE, NOT TO EXCEED A DEPTH OF 3/4 INCH, BY RAKING, HARROWING, OR OTHER PROVEN METHOD.
- MULCHING**
SEEDING AREAS SHOULD BE MULCHED TO CONSERVE MOISTURE, PREVENT SURFACE COMPACTION OR CRUSTING, REDUCE RUNOFF AND EROSION, CONTROL INSECTS, AND HELP ESTABLISH PLANT COVER. NATIVE HAY OR STRAW SHOULD BE APPLIED AT A RATE OF 4,000 POUNDS PER ACRE AND CRUMPED INTO THE GROUND. ON SLOPES GREATER THAN 3:1, AN AGRONOMY BLANKET SHOULD BE USED.
- SUPPLEMENTAL WATER**
IN LOW RAINFALL AREAS, WHERE WATER IS AVAILABLE AND WHERE RAPID ESTABLISHMENT IS NEEDED, IRRIGATION OF NEW SEEDING SHOULD BE PERFORMED DURING THE FIRST GROWING SEASON. WATER SHOULD BE APPLIED AT APPROXIMATELY ONE WEEK INTERVALS AT A RATE OF 3/4 TO 1 INCH PER APPLICATION, WHEN RAINFALL IS DEFICIENT FOR PLANT DEVELOPMENT.

EROSION PROTECTION & VEGETATION REQUIREMENTS
PER U.S.D.A. SOIL CONSERVATION SERVICE GUIDELINES:

- PRACTICE NO. & NAME: 242 - CRITICAL AREA TREATMENT RANGE SITE: SANDY FOOTHILLS
- PLANNED SEEDING OPERATION:
A. METHOD: DRILL - XX
B. DATES: OCT. 15 - MAY 31
C. FIRM SEED: XX
D. INTERSEED: XX
E. STUBBLE COVER: B
F. TYPE: GRASS, W/AGITATOR
G. DATE: OCT. 15 - MAY 31
H. PLANTING DEPTH: 1/2 - 1 1/2"
I. WEED CONTROL: N/A
J. MOVING: XX
K. CHEMICAL: XX
L. DATES: XX
M. SEE S.C.S. FOR SPECIFIC RECOMMENDATIONS AT HERBICIDE APPLICATION TIME.

MULCH

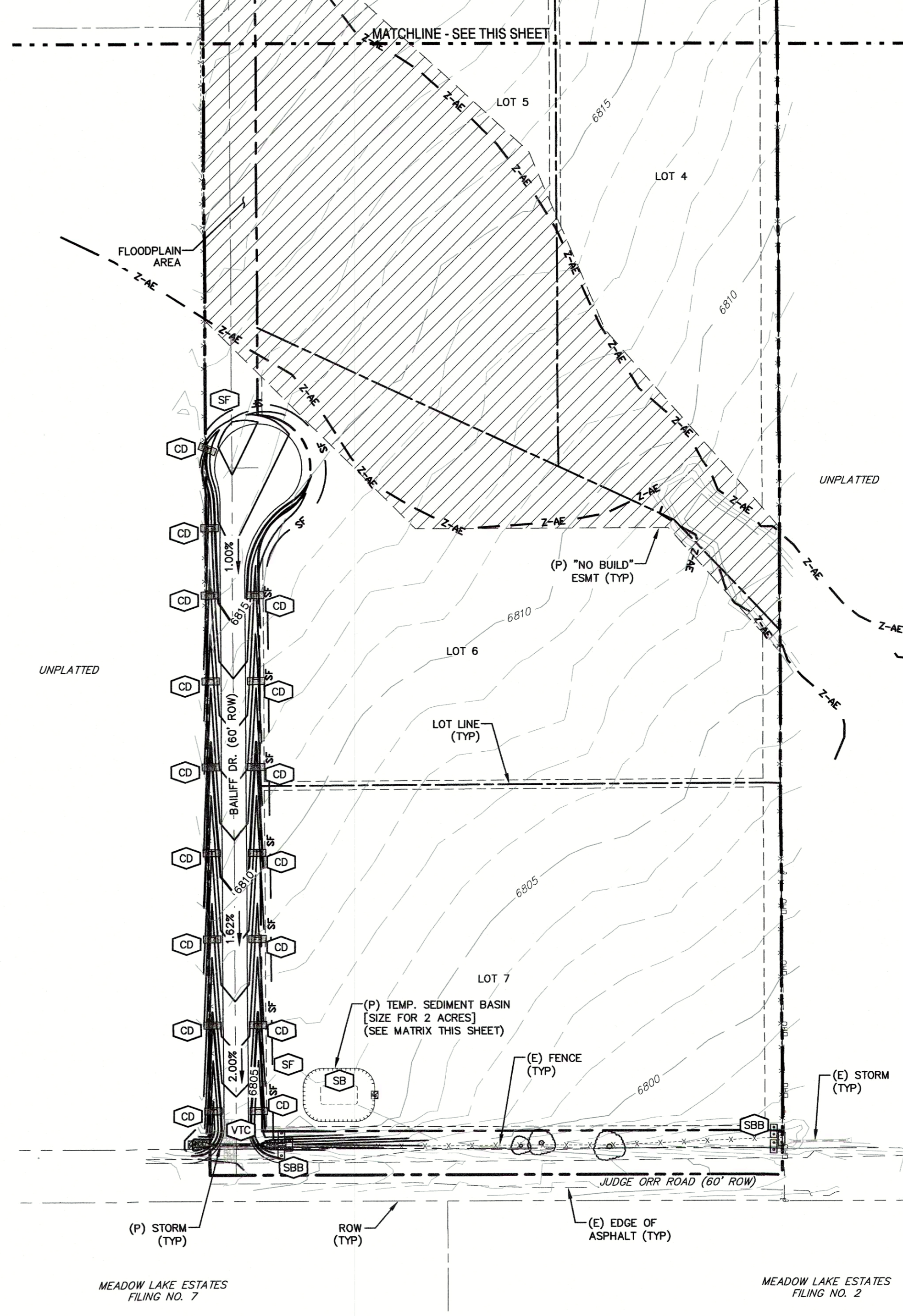
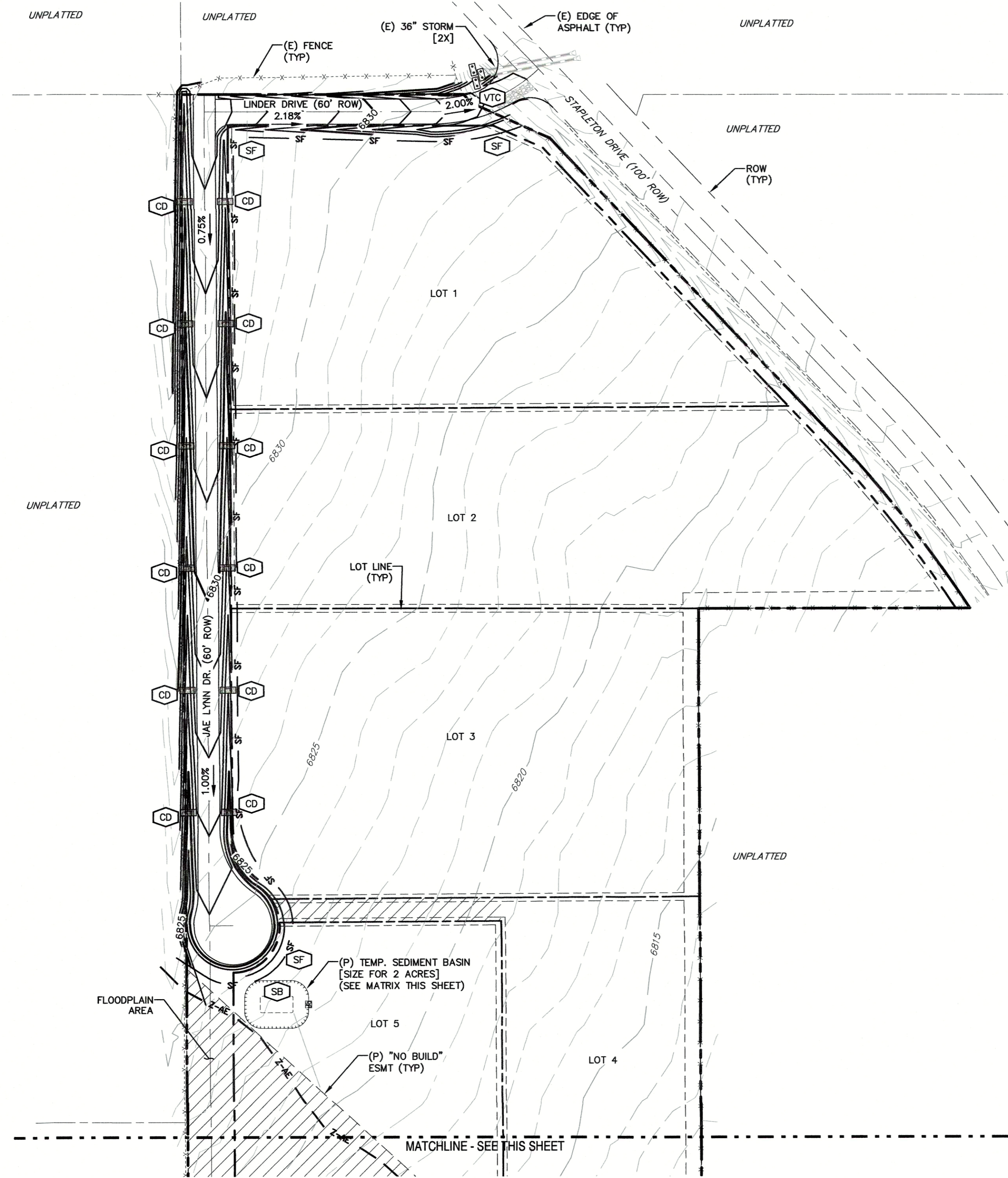
KIND:	LONG - STEM NATIVE HAY	AMOUNT:	4,000	POUNDS/ACRE
HOW APPLIED:	N/A	ANCHORAGE DEPTH:	CRUMPED	4"

SEED

VARIETY	SPECIES	REQUIRED PLS. RATES PER ACRE (1000)
GOSHEN	PRAIRIE SANDBERG	6.5
VAUGHN	SIDEGRASS GRAMMA	9.0
LOVINGTON	BLUE GRAMMA	3.0
BLACKWELL	SWITCH GRASS	4.5
PASTURA	LITTLE BLUESTEM	7.0

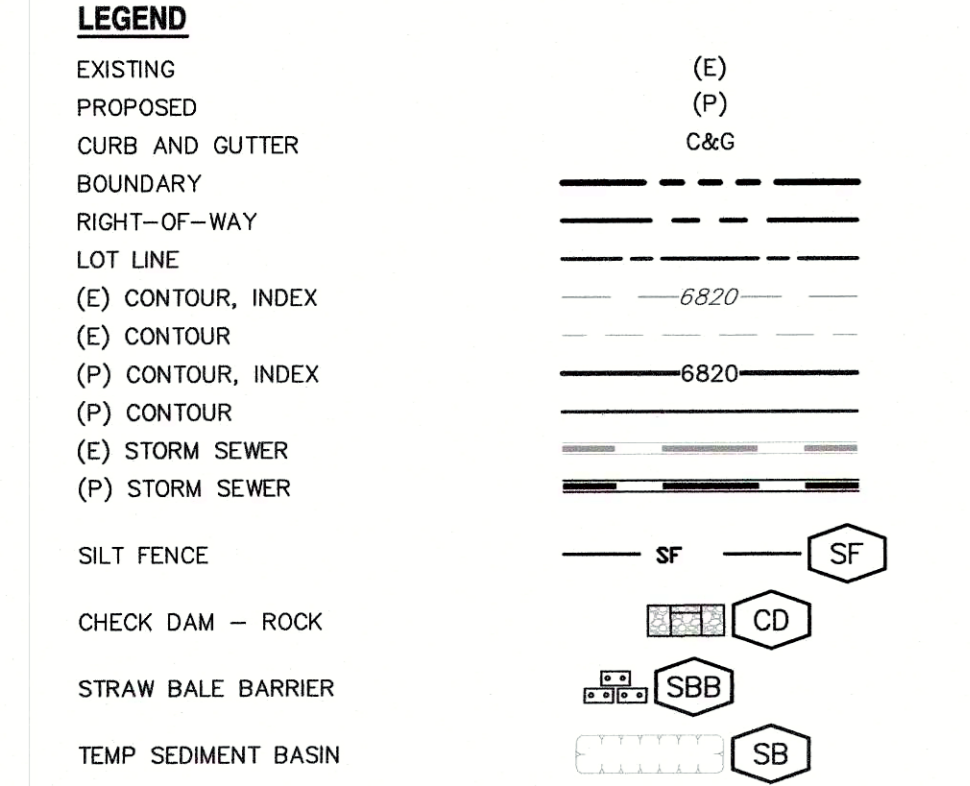
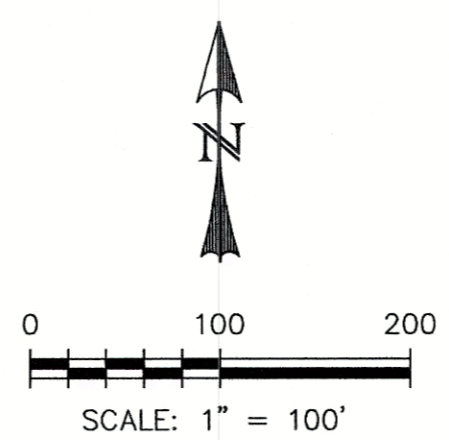
PLANNED SEEDING RATE PER SPECIES/ACRE

(2) PLS SEEDING RATE PER SPECIES/ACRE (1) x (2)	(4) PLANNED ACRE	(5) TOTAL PLS LBS/ACRE (3) x (4)
15	0.98	4.4
25	2.25	4.4
15	0.45	4.4
20	0.90	4.4
25	1.75	4.4



TEMPORARY SEDIMENT BASIN SIZING INFORMATION

UPSTREAM DRAINAGE AREA	Basin Bottom Width	Spillway Crest Length	Hole Diameter
2 ACRES	21 FEET	3 FEET	13 / 16"



REV.	DESCRIPTION	DATE
1	ADDRESS AGENCY COMMENTS	10/23/18
2	ADDRESS AGENCY COMMENTS	12/18/18



PREPARED FOR:
JOHN JENNINGS
2030 TABOR CT.
COLORADO SPRINGS, CO 80919

PREPARED UNDER MY DIRECT SUPERVISION FOR AND BEHALF OF
CATAMOUNT ENGINEERING
40510
DAVID L. MORGAN, COLORADO PE #40510
DATE: 1.30.19

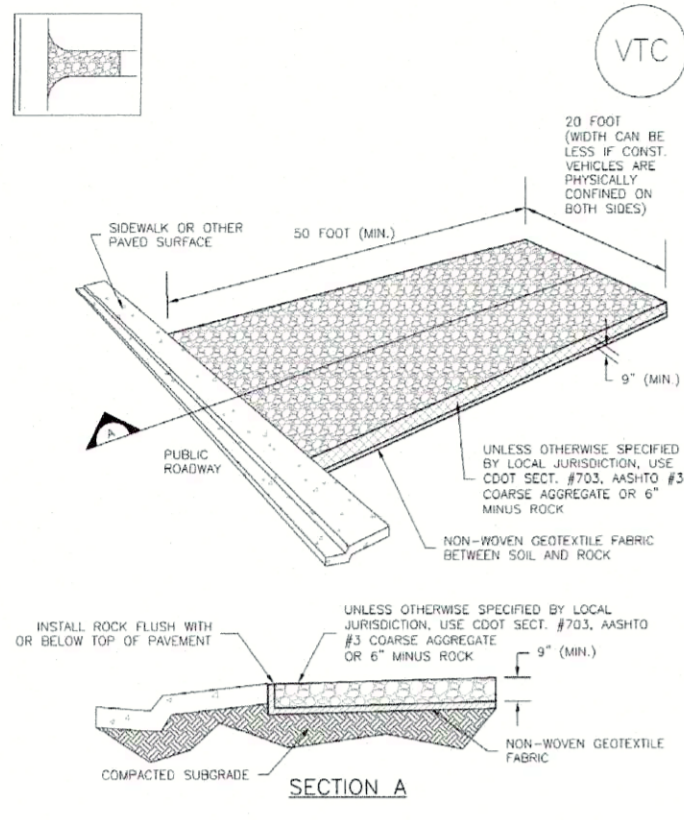


JUDGE ORR RANCHETTES
GRADING & EROSION CONTROL PLAN

DESIGNED BY:	MGP	DRAWN BY:	MGP
SCALE:	1"=100'	DATE:	06/18/18
JOB NUMBER:	16-093	SHEET:	2 OF 7

PCD FILE NO: SP-17-021

Vehicle Tracking Control (VTC) SM-4



VTC-1. AGGREGATE VEHICLE TRACKING CONTROL

November 2010 Urban Drainage and Flood Control District Urban Storm Drainage Criteria Manual Volume 3 VTC-3

SM-4 Vehicle Tracking Control (VTC)

STABILIZED CONSTRUCTION ENTRANCE/EXIT INSTALLATION NOTES

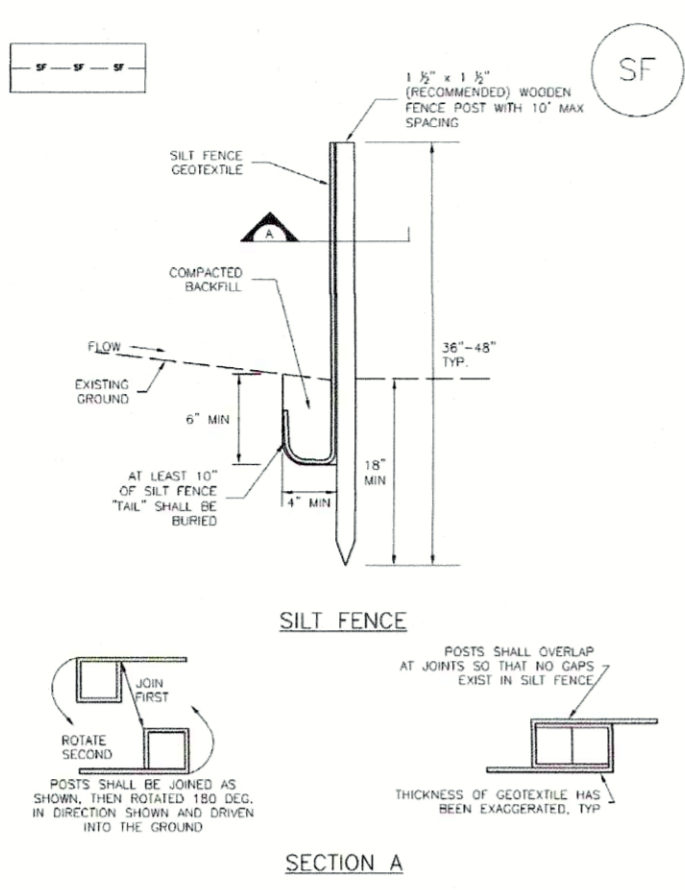
- SEE PLAN VIEW FOR LOCATION OF CONSTRUCTION ENTRANCE/EXIT(S).
- CONSTRUCTION MAT OR FIRM STABILIZED CONSTRUCTION ENTRANCE ARE ONLY TO BE USED ON SHORT DURATION PROJECTS TEMPORILY SERVING AS A MEANS TO A MAJOR WHERE THERE WILL BE LIMITED VEHICULAR ACCESS.
- A STABILIZED CONSTRUCTION ENTRANCE/EXIT SHALL BE LOCATED AT ALL ACCESS POINTS WHERE VEHICLES ACCESS THE CONSTRUCTION SITE FROM PUBLIC RIGHT-OF-WAY.
- STABILIZED CONSTRUCTION ENTRANCE/EXIT SHALL BE INSTALLED PRIOR TO ANY LAND DISTURBING ACTIVITIES.
- A NON-WOVEN GEOTEXTILE FABRIC SHALL BE PLACED UNDER THE STABILIZED CONSTRUCTION ENTRANCE/EXIT PRIOR TO THE PLACEMENT OF AGGREGATE.
- UNLESS OTHERWISE SPECIFIED BY LOCAL JURISDICTION, USE COARSE AGGREGATE OF 3/4" (MIN) ROCK.
- INSTALL, MAINTAIN, INSPECT, AND MAINTAIN THEM IN EFFECTIVE OPERATING CONDITION.
- INSPECT BMPs EACH WORKDAY AND MAINTAIN THEM IN EFFECTIVE OPERATING CONDITION.
- FREQUENT OBSERVATIONS AND MAINTENANCE ARE NECESSARY TO MAINTAIN BMPs IN EFFECTIVE OPERATING CONDITION.
- WHEN BMPs HAVE FAILED, REPAIR OR REPLACEMENT SHOULD BE INITIATED UPON DISCOVERY OF THE FAILURE.
- ROADS SHALL BE REPAIRED OR REHABILITATED AS NECESSARY TO THE STABILIZED ENTRANCE/EXIT TO MAINTAIN A GOOD ROAD.
- SEEDMENT TRACKS INTO PAVED AREAS IS TO BE PREVENTED THROUGHOUT THE DAY AND AT THE END OF THE DAY BY SHOULDERING OR BREAKING SEEDMENT MAY NOT BE WASHED DOWN STREET SEWER GRABBERS.

NOTE: MANY JURISDICTIONS HAVE BMP DETAILS THAT VARY FROM USDS STANDARD DETAILS. CONSULT WITH LOCAL JURISDICTIONS AS TO WHICH DETAILS SHOULD BE USED WHEN DIFFERENCES ARE NOTED.

SM-4 VTC-4 VTC-5 VTC-6 VTC-7 VTC-8 VTC-9 VTC-10 VTC-11 VTC-12 VTC-13 VTC-14 VTC-15 VTC-16 VTC-17 VTC-18 VTC-19 VTC-20 VTC-21 VTC-22 VTC-23 VTC-24 VTC-25 VTC-26 VTC-27 VTC-28 VTC-29 VTC-30 VTC-31 VTC-32 VTC-33 VTC-34 VTC-35 VTC-36 VTC-37 VTC-38 VTC-39 VTC-40 VTC-41 VTC-42 VTC-43 VTC-44 VTC-45 VTC-46 VTC-47 VTC-48 VTC-49 VTC-50 VTC-51 VTC-52 VTC-53 VTC-54 VTC-55 VTC-56 VTC-57 VTC-58 VTC-59 VTC-60 VTC-61 VTC-62 VTC-63 VTC-64 VTC-65 VTC-66 VTC-67 VTC-68 VTC-69 VTC-70 VTC-71 VTC-72 VTC-73 VTC-74 VTC-75 VTC-76 VTC-77 VTC-78 VTC-79 VTC-80 VTC-81 VTC-82 VTC-83 VTC-84 VTC-85 VTC-86 VTC-87 VTC-88 VTC-89 VTC-90 VTC-91 VTC-92 VTC-93 VTC-94 VTC-95 VTC-96 VTC-97 VTC-98 VTC-99 VTC-100

VTC-6 Urban Drainage and Flood Control District Urban Storm Drainage Criteria Manual Volume 3 November 2010

Silt Fence (SF) SC-1



SF-1. SILT FENCE

November 2010 Urban Drainage and Flood Control District Urban Storm Drainage Criteria Manual Volume 3 SF-3

SC-1 Silt Fence (SF)

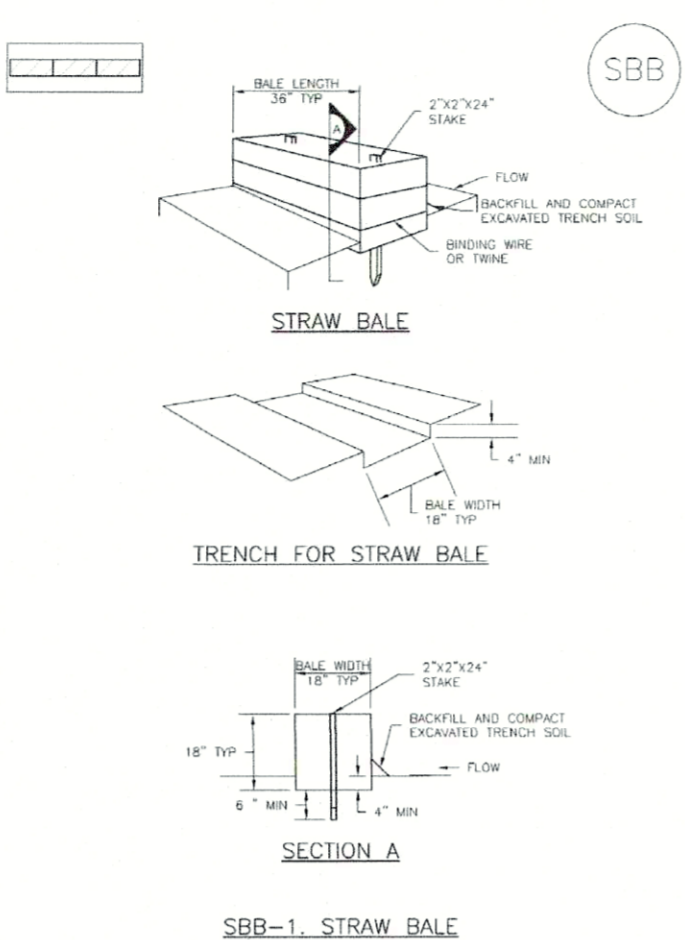
SILT FENCE INSTALLATION NOTES

- SILT FENCE MUST BE PULLED AWAY FROM THE SIDE OF THE SLOPE TO ALLOW FOR WATER PENETRATION TO THE TOP OF A SLOPE SHOULD BE INSTALLED IN A FLAT LOCATION AT LEAST SEVEN FEET (7'-0") FROM THE TOP OF THE SLOPE TO ALLOW ROOM FOR PONDING AND SEEDING.
- A LAYOUT OF 4" X 4" ANCHOR TRENCH SHALL BE EXCAVATED USING PNEUMATIC OR SILT FENCE INSTALLATION GUIDE, NO HAND CRANKS, BACKHOES, OR DRUM EQUIPMENT SHALL BE USED.
- CONTRACT MOTOR TRACTOR BY HAND WITH A "TAPPING FOOT" OR BY REELING SPOOLS. CONNECTION SHALL BE SUCH THAT SILT FENCE RESULTS BEING PULLED OUT OF ANCHOR TRENCH BY HAND.
- SILT FENCE SHALL BE PULLED TIGHT AS IT IS ANCHORED TO THE STAKES. THERE SHOULD BE NO HANGINGS OR SAG BETWEEN STAKES WHEN IT HAS BEEN ANCHORED TO THE STAKES.
- SILT FENCE FABRIC SHALL BE ANCHORED TO THE STAKES USING 1" HEAVY DUTY STAPLES OR NAILS WITH 1" HEAVY STAPLES AND NAILS SHOULD BE PLACED 3" ALONG THE FABRIC DOWN THE STAKE.
- AT THE END OF A RUN OF SILT FENCE ALONG A CONTOUR, THE SILT FENCE SHOULD BE TURNED PERPENDICULAR TO THE CONTOUR TO CREATE A "U-TURN." THE "U-TURN" EXTENDING PERPENDICULAR TO THE CONTOUR SHOULD BE OF SUFFICIENT LENGTH TO KEEP RAINOFF FROM FLOWING AROUND THE END OF THE SILT FENCE (TYPICALLY 10' - 20').
- SILT FENCE SHALL BE REVEALED AREAS TO ANY LAND DISTURBING ACTIVITIES.

NOTE: MANY JURISDICTIONS HAVE BMP DETAILS THAT VARY FROM USDS STANDARD DETAILS. CONSULT WITH LOCAL JURISDICTIONS AS TO WHICH DETAILS SHOULD BE USED WHEN DIFFERENCES ARE NOTED.

SF-4 Urban Drainage and Flood Control District Urban Storm Drainage Criteria Manual Volume 3 November 2010

SC-3 Straw Bale Barrier (SBB)



SBB-1. STRAW BALE

November 2010 Urban Drainage and Flood Control District Urban Storm Drainage Criteria Manual Volume 3 SBB-2

SC-3 Straw Bale Barrier (SBB)

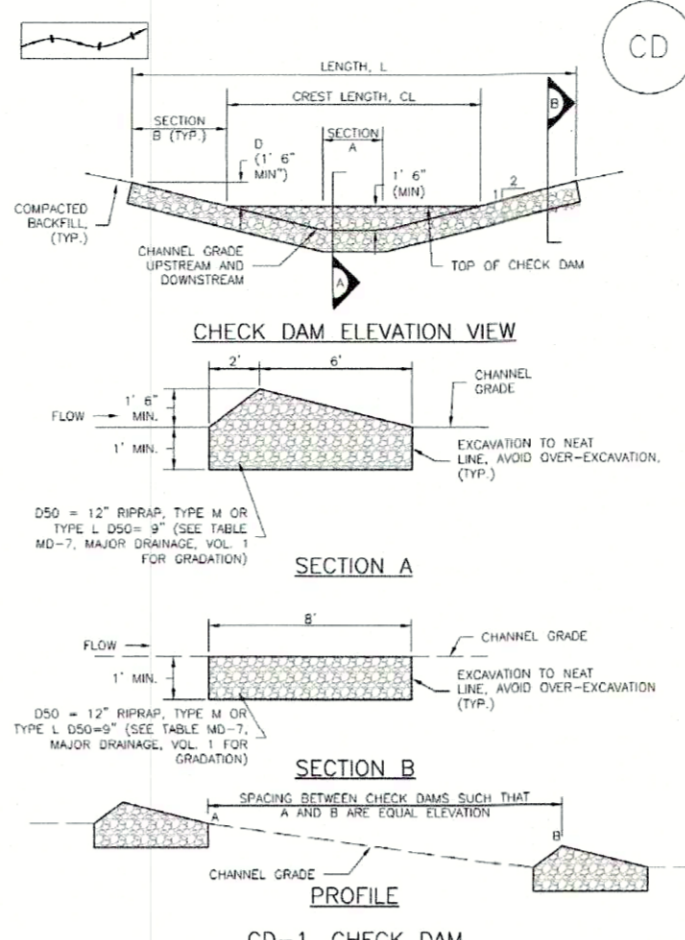
STRAW BALE INSTALLATION NOTES

- SEE PLAN VIEW FOR LOCATION OF STRAW BALE.
- STRAW BALES SHALL BE PULLED AWAY FROM THE SIDE OF THE SLOPE TO ALLOW FOR WATER PENETRATION TO THE TOP OF A SLOPE SHOULD BE INSTALLED IN A FLAT LOCATION AT LEAST SEVEN FEET (7'-0") FROM THE TOP OF THE SLOPE TO ALLOW ROOM FOR PONDING AND SEEDING.
- A LAYOUT OF 4" X 4" ANCHOR TRENCH SHALL BE EXCAVATED USING PNEUMATIC OR SILT FENCE INSTALLATION GUIDE, NO HAND CRANKS, BACKHOES, OR DRUM EQUIPMENT SHALL BE USED.
- CONTRACT MOTOR TRACTOR BY HAND WITH A "TAPPING FOOT" OR BY REELING SPOOLS. CONNECTION SHALL BE SUCH THAT SILT FENCE RESULTS BEING PULLED OUT OF ANCHOR TRENCH BY HAND.
- SILT FENCE SHALL BE PULLED TIGHT AS IT IS ANCHORED TO THE STAKES. THERE SHOULD BE NO HANGINGS OR SAG BETWEEN STAKES WHEN IT HAS BEEN ANCHORED TO THE STAKES.
- SILT FENCE FABRIC SHALL BE ANCHORED TO THE STAKES USING 1" HEAVY DUTY STAPLES OR NAILS WITH 1" HEAVY STAPLES AND NAILS SHOULD BE PLACED 3" ALONG THE FABRIC DOWN THE STAKE.
- AT THE END OF A RUN OF SILT FENCE ALONG A CONTOUR, THE SILT FENCE SHOULD BE TURNED PERPENDICULAR TO THE CONTOUR TO CREATE A "U-TURN." THE "U-TURN" EXTENDING PERPENDICULAR TO THE CONTOUR SHOULD BE OF SUFFICIENT LENGTH TO KEEP RAINOFF FROM FLOWING AROUND THE END OF THE SILT FENCE (TYPICALLY 10' - 20').
- SILT FENCE SHALL BE REVEALED AREAS TO ANY LAND DISTURBING ACTIVITIES.

NOTE: MANY JURISDICTIONS HAVE BMP DETAILS THAT VARY FROM USDS STANDARD DETAILS. CONSULT WITH LOCAL JURISDICTIONS AS TO WHICH DETAILS SHOULD BE USED WHEN DIFFERENCES ARE NOTED.

November 2010 Urban Drainage and Flood Control District Urban Storm Drainage Criteria Manual Volume 3 SBB-3

Check Dams (CD) EC-12



CD-1. CHECK DAM

November 2010 Urban Drainage and Flood Control District Urban Storm Drainage Criteria Manual Volume 3 CD-3

EC-12 Check Dams (CD)

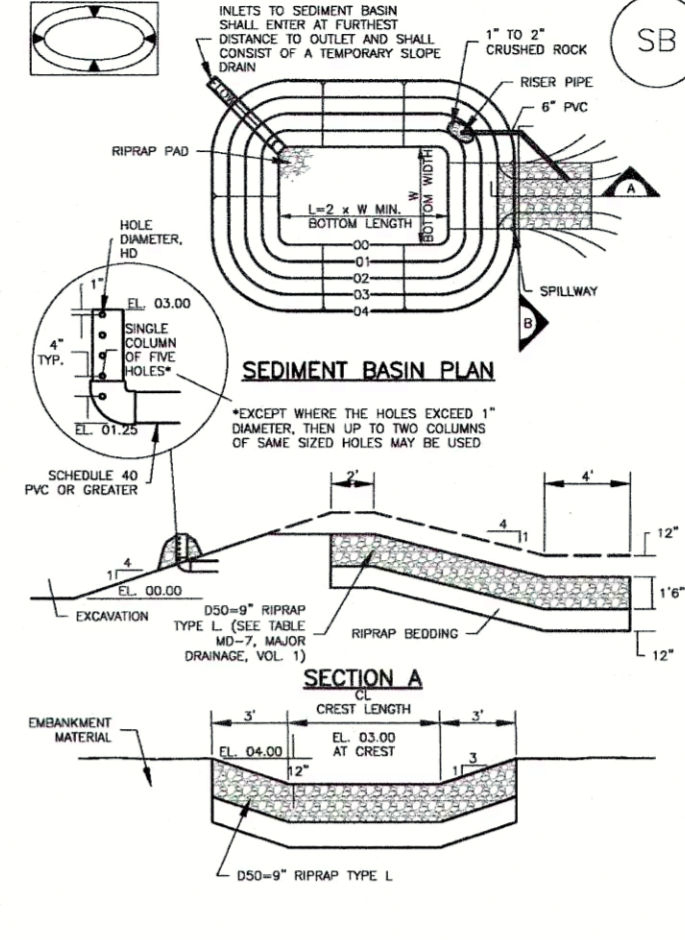
CHECK DAM INSTALLATION NOTES

- SEE PLAN VIEW FOR LOCATION OF CHECK DAMS.
- CHECK DAM TYPE (CHECK DAM OR REINFORCED CHECK DAM) LENGTH (CL) CREST LENGTH (CL) AND DEPTH (CD).
- CHECK DAMS INDICATED ON THIS PLAN SHALL BE INSTALLED AFTER CONSTRUCTION OF THE CHANNEL GRACE AND UPSTREAM LAND DISTURBING ACTIVITIES.
- REPAIR UTILIZED FOR CHECK DAMS SHOULD BE OF APPROXIMATELY 50% FOR THE SPECIFICATION. TYPICAL TYPES OF REPAIR UTILIZED FOR CHECK DAMS ARE TYPE "B" (SDO 1/2") OR TYPE "C" (SDO 3/4").
- REPAIR FINE SHALL BE FINISHED INTO THE GROUND A MINIMUM OF 1".
- THE FINISH OF THE CHECK DAM SHALL BE A MINIMUM OF 1" HIGHER THAN THE CENTER OF THE CHECK DAM.
- INSPECT BMPs EACH WORKDAY AND MAINTAIN THEM IN EFFECTIVE OPERATING CONDITION.
- FREQUENT OBSERVATIONS AND MAINTENANCE ARE NECESSARY TO MAINTAIN BMPs IN EFFECTIVE OPERATING CONDITION.
- WHEN BMPs HAVE FAILED, REPAIR OR REPLACEMENT SHOULD BE INITIATED UPON DISCOVERY OF THE FAILURE.
- WHEN CHECK DAMS ARE REPAIRED, EXCAVATIONS SHALL BE FILLED WITH SUITABLE MATERIAL TO PREVENT FLOODING AND MAINTAIN THE STABILITY OF THE STRAW BALE BARRIER.
- REPAIR UTILIZED FOR CHECK DAMS SHOULD BE OF APPROXIMATELY 50% FOR THE SPECIFICATION. TYPICAL TYPES OF REPAIR UTILIZED FOR CHECK DAMS ARE TYPE "B" (SDO 1/2") OR TYPE "C" (SDO 3/4").

NOTE: MANY JURISDICTIONS HAVE BMP DETAILS THAT VARY FROM USDS STANDARD DETAILS. CONSULT WITH LOCAL JURISDICTIONS AS TO WHICH DETAILS SHOULD BE USED WHEN DIFFERENCES ARE NOTED.

EC-4 Urban Drainage and Flood Control District Urban Storm Drainage Criteria Manual Volume 3 November 2010

Sediment Basin (SB) SC-7



August 2013 Urban Drainage and Flood Control District Urban Storm Drainage Criteria Manual Volume 3 SB-5

SC-7 Sediment Basin (SB)

Minimum Drainage Area (Acres)	Basin Storage Volume (cu ft)	Settling Chamber Length (ft)	Minimum Basin Depth (ft)
1	12,500	20	2.0
2	25,000	20	2.0
3	37,500	20	2.0
4	50,000	20	2.0
5	62,500	20	2.0
6	75,000	20	2.0
7	87,500	20	2.0
8	100,000	20	2.0
9	112,500	20	2.0
10	125,000	20	2.0
11	137,500	20	2.0
12	150,000	20	2.0
13	162,500	20	2.0
14	175,000	20	2.0
15	187,500	20	2.0

- SEE PLAN VIEW FOR LOCATION OF SEDIMENT BASIN.
- TYPE OF BASIN (STANDARD BASIN OR NONSTANDARD BASIN).
- STANDARD BASIN BOTTOM WITHIN 8" OF CREST LENGTH CL AND HOLE.
- NONSTANDARD BASIN BOTTOM CONSTRUCTION DIMENSIONS FOR BASIN INCLUDING SETBACK HEIGHT, NUMBER OF COLUMNS N, HOLE DIAMETER D AND PIPE DIAMETER P.
- FOR STANDARD BASIN, BOTTOM DIMENSION MAY BE MODIFIED AS LONG AS BOTTOM AREA IS NOT REDUCED.
- CHECK DAMS ARE TO BE MAINTAINED BY REPAIR AREAS, THE UPSTREAM DISTURBED AREA IS STABILIZED AND APPROVED BY THE LOCAL JURISDICTION.
- INSPECT BMPs EACH WORKDAY AND MAINTAIN THEM IN EFFECTIVE OPERATING CONDITION.
- FREQUENT OBSERVATIONS AND MAINTENANCE ARE NECESSARY TO MAINTAIN BMPs IN EFFECTIVE OPERATING CONDITION.
- WHEN BMPs HAVE FAILED, REPAIR OR REPLACEMENT SHOULD BE INITIATED UPON DISCOVERY OF THE FAILURE.
- WHEN CHECK DAMS ARE REPAIRED, EXCAVATIONS SHALL BE FILLED WITH SUITABLE MATERIAL TO PREVENT FLOODING AND MAINTAIN THE STABILITY OF THE STRAW BALE BARRIER.
- REPAIR UTILIZED FOR CHECK DAMS SHOULD BE OF APPROXIMATELY 50% FOR THE SPECIFICATION. TYPICAL TYPES OF REPAIR UTILIZED FOR CHECK DAMS ARE TYPE "B" (SDO 1/2") OR TYPE "C" (SDO 3/4").

August 2013 Urban Drainage and Flood Control District Urban Storm Drainage Criteria Manual Volume 3 SB-7

Sediment Basin (SB) SC-7

- SEE PLAN VIEW FOR LOCATION OF SEDIMENT BASIN.
- TYPE OF BASIN (STANDARD BASIN OR NONSTANDARD BASIN).
- STANDARD BASIN BOTTOM WITHIN 8" OF CREST LENGTH CL AND HOLE.
- NONSTANDARD BASIN BOTTOM CONSTRUCTION DIMENSIONS FOR BASIN INCLUDING SETBACK HEIGHT, NUMBER OF COLUMNS N, HOLE DIAMETER D AND PIPE DIAMETER P.
- FOR STANDARD BASIN, BOTTOM DIMENSION MAY BE MODIFIED AS LONG AS BOTTOM AREA IS NOT REDUCED.
- CHECK DAMS ARE TO BE MAINTAINED BY REPAIR AREAS, THE UPSTREAM DISTURBED AREA IS STABILIZED AND APPROVED BY THE LOCAL JURISDICTION.
- INSPECT BMPs EACH WORKDAY AND MAINTAIN THEM IN EFFECTIVE OPERATING CONDITION.
- FREQUENT OBSERVATIONS AND MAINTENANCE ARE NECESSARY TO MAINTAIN BMPs IN EFFECTIVE OPERATING CONDITION.
- WHEN BMPs HAVE FAILED, REPAIR OR REPLACEMENT SHOULD BE INITIATED UPON DISCOVERY OF THE FAILURE.
- WHEN CHECK DAMS ARE REPAIRED, EXCAVATIONS SHALL BE FILLED WITH SUITABLE MATERIAL TO PREVENT FLOODING AND MAINTAIN THE STABILITY OF THE STRAW BALE BARRIER.
- REPAIR UTILIZED FOR CHECK DAMS SHOULD BE OF APPROXIMATELY 50% FOR THE SPECIFICATION. TYPICAL TYPES OF REPAIR UTILIZED FOR CHECK DAMS ARE TYPE "B" (SDO 1/2") OR TYPE "C" (SDO 3/4").

August 2013 Urban Drainage and Flood Control District Urban Storm Drainage Criteria Manual Volume 3 SB-7

REV.	DESCRIPTION	DATE
1	ADDRESS AGENCY COMMENTS	10/23/18
2	ADDRESS AGENCY COMMENTS	12/18/18

811
Know what's below.
Call 72 hours before you dig.
For more details visit:
www.call811.com

PREPARED FOR:
JOHN JENNINGS
2030 TABOR CT.
COLORADO SPRINGS, CO 80919

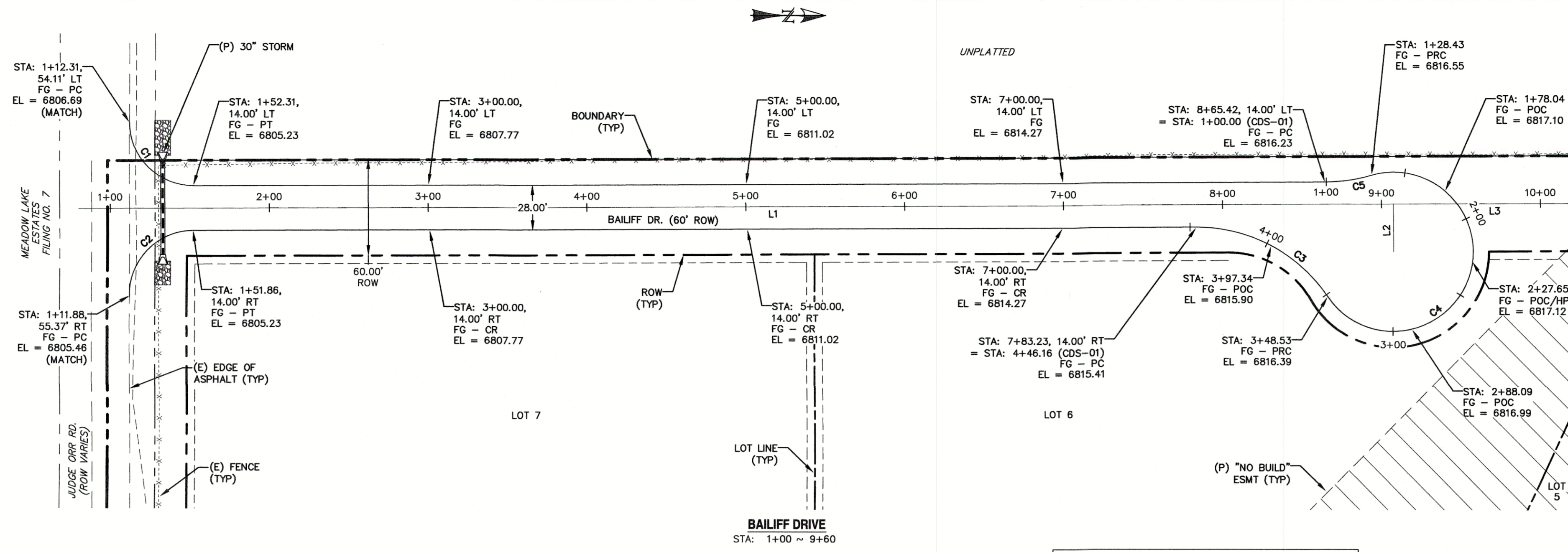
PREPARED UNDER MY DIRECT SUPERVISION FOR AND BEHALF OF
CATAMOUNT ENGINEERING
40510
David L. Morales
DAVID L. MORALES, COLORADO PE #40510
1.30.19 DATE

CATAMOUNT ENGINEERING
PO BOX 221, WOODLAND PARK, CO 80866, (719) 426-2124

JUDGE ORR RANCHETTES
GRADING & EROSION CONTROL
DETAIL SHEET

SCALE: N/A	DRAWN BY: MGP
JOB NUMBER: 16-093	DATE: 06/18/18
	SHEET: 3 OF 7

PCD FILE NO: SP-17-011



LEGEND

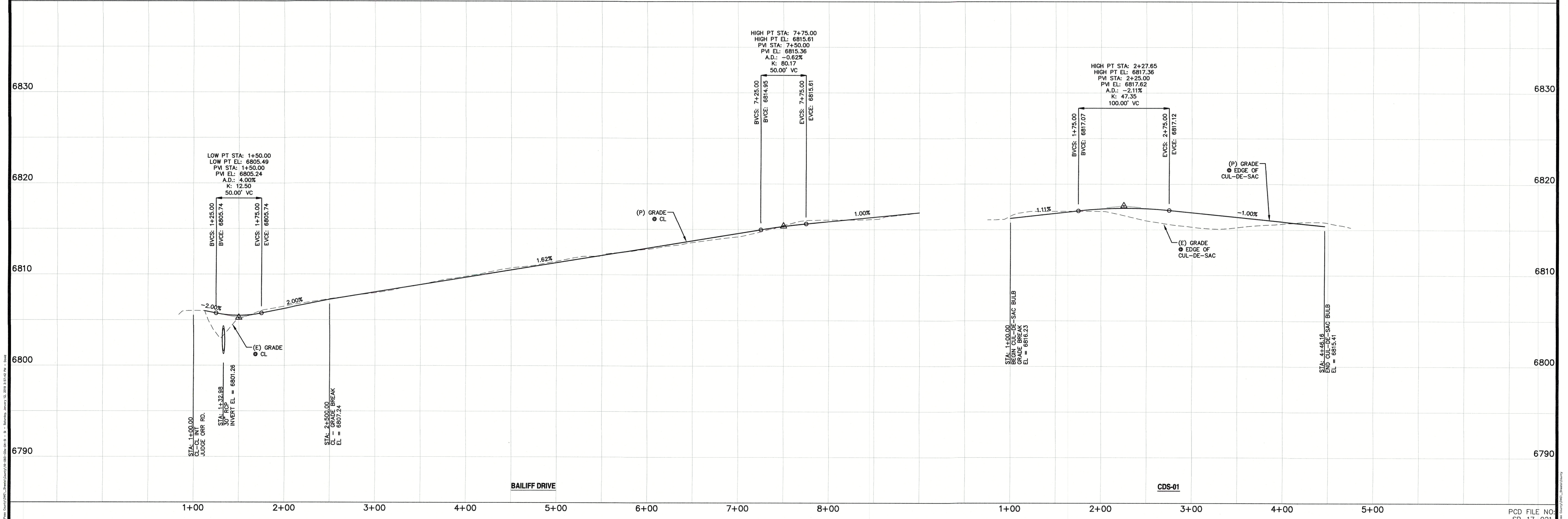
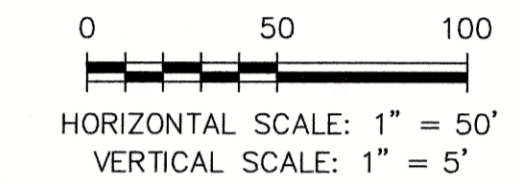
EXISTING	(E)
PROPOSED	(P)
CURB AND GUTTER	C&G
BOUNDARY	---
RIGHT-OF-WAY	---
LOT LINE	---
(E) CONTOUR, INDEX	---6820---
(E) CONTOUR	---
(P) CONTOUR, INDEX	---6820---
(P) CONTOUR	---
(E) STORM SEWER	---
(P) STORM SEWER	---

LINE TABLE

LINE	BEARING	DISTANCE
L1	N0° 17' 32"W	809.27
L2	N89° 42' 28"E	29.98
L3	N0° 17' 32"W	755.44

CURVE TABLE

CURVE	DELTA	RADIUS	LENGTH
C1	90°09'02"	40.00	62.94
C2	91°58'07"	40.00	64.21
C3	55°56'06"	100.00	97.63
C4	252°13'20"	50.00	220.11
C5	167°17'14"	100.00	28.43



REV.	DESCRIPTION	DATE
1	ADDRESS AGENCY COMMENTS	10/23/18
2	ADDRESS AGENCY COMMENTS	12/18/18



PREPARED FOR:
JOHN JENNINGS
2030 TABOR CT.
COLORADO SPRINGS, CO 80919

PREPARED UNDER MY DIRECT SUPERVISION FOR AND BEHALF
OF CATAMOUNT ENGINEERING.
40510
DAVID L. MOARES, COLORADO PE #40510
1.30.19 DATE

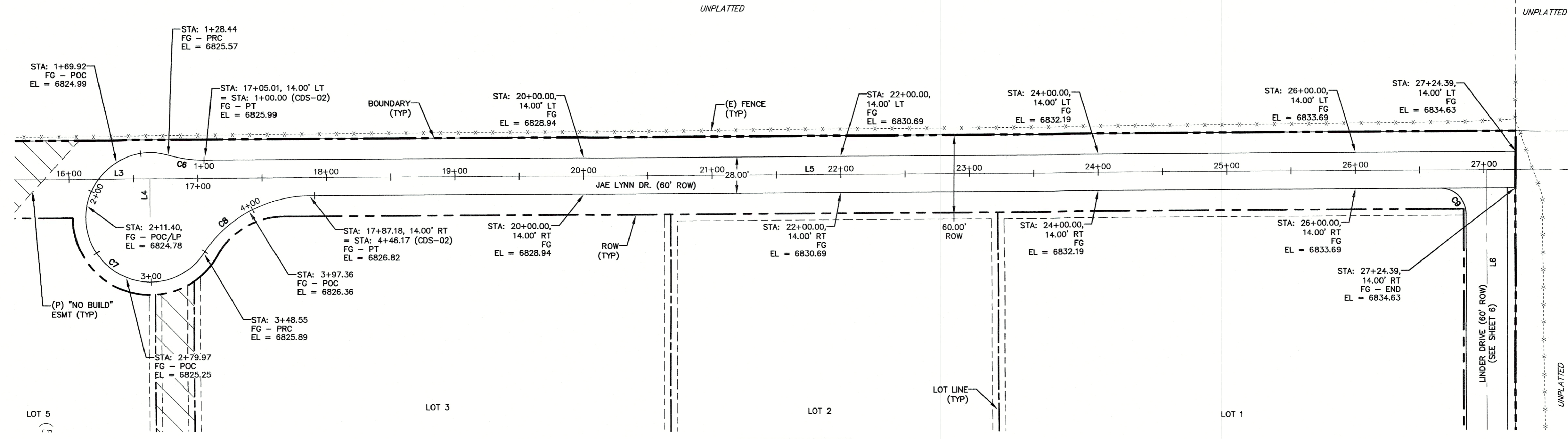


**JUDGE ORR
RANCHETTES**
**STREET IMPROVEMENT
PLAN & PROFILE**

SCALE: 1" = 50'	DATE: 06/18/18
JOB NUMBER: 16-093	SHEET: 4 OF 7

PCD FILE NO:
SP-17-021

DRAWN BY: MGP

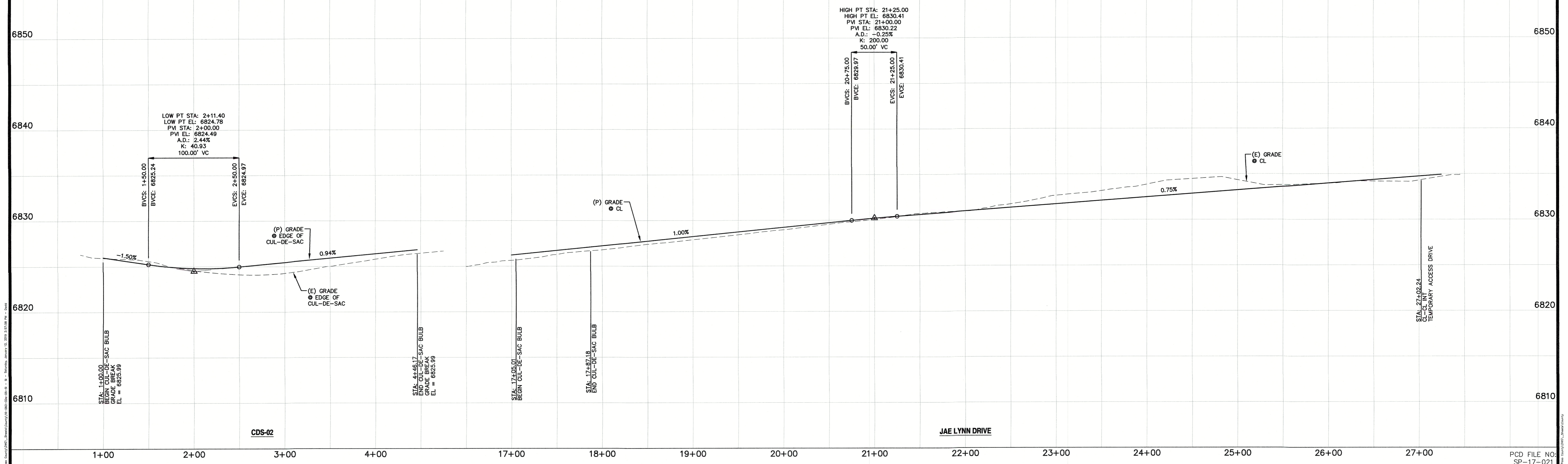
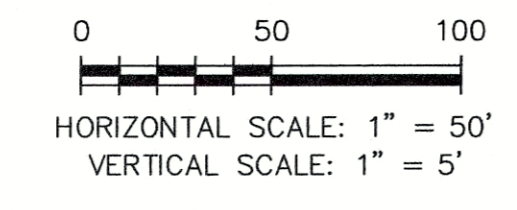


LINE TABLE		
LINE	BEARING	DISTANCE
L3	N0° 17' 32"W	755.44
L4	S89° 42' 28"W	29.98
L5	N0° 17' 32"W	1039.31
L6	N90° 00' 00"E	291.17

CURVE TABLE			
CURVE	DELTA	RADIUS	LENGTH
C6	161° 17' 36"	100.00	28.44
C7	252° 13' 35"	50.00	220.11
C8	55° 55' 59"	100.00	97.62
C9	90° 17' 32"	20.00	31.52

LEGEND

EXISTING	(E)
PROPOSED	(P)
CURB AND GUTTER	C&G
BOUNDARY	---
RIGHT-OF-WAY	---
LOT LINE	---
(E) CONTOUR, INDEX	---6820---
(E) CONTOUR	---6820---
(P) CONTOUR, INDEX	---6820---
(P) CONTOUR	---6820---
(E) STORM SEWER	---
(P) STORM SEWER	---

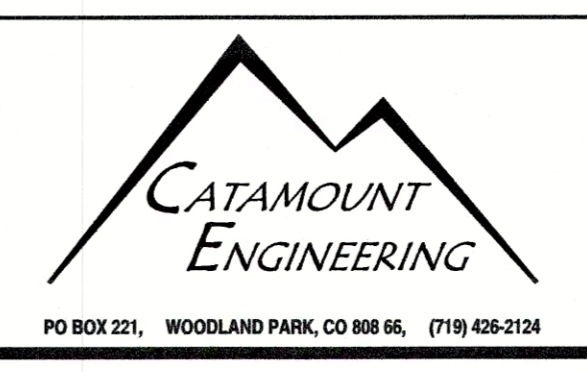


REV.	DESCRIPTION	DATE
1	ADDRESS AGENCY COMMENTS	10/23/18
2	ADDRESS AGENCY COMMENTS	12/18/18



PREPARED FOR:
JOHN JENNINGS
2030 TABOR CT.
COLORADO SPRINGS, CO 80919

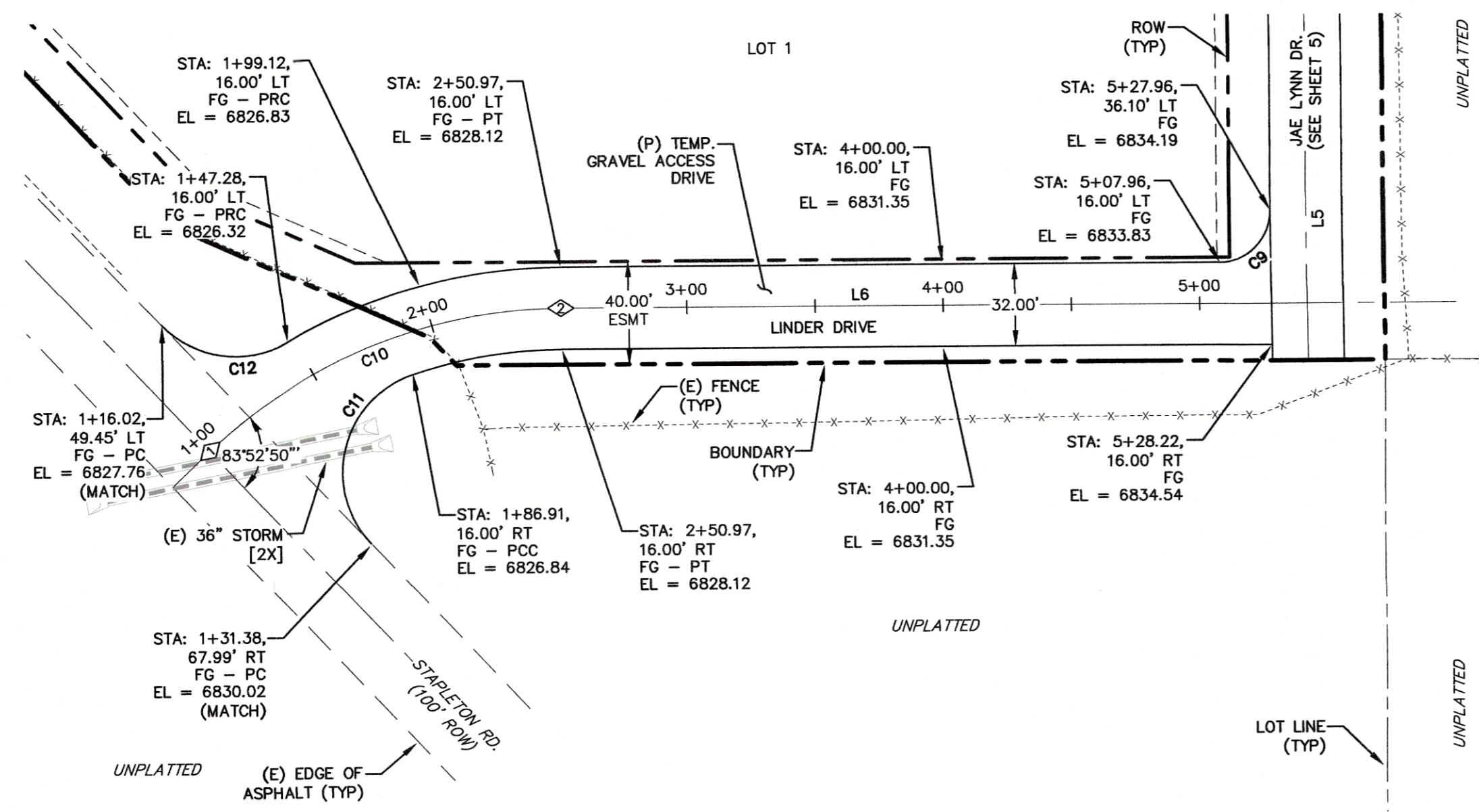
PREPARED UNDER MY DIRECT SUPERVISION FOR AND BEHALF OF CATAMOUNT ENGINEERING.
DAVID L. MORALES, COLORADO PE #40510
DATE: 1.30.19



JUDGE ORR RANCHETTES
STREET IMPROVEMENT PLAN & PROFILE

SCALE: 1" = 50'	DATE: 06/18/18
JOB NUMBER: 16-093	SHEET: 5 OF 7

PCD FILE NO: SP-17-021

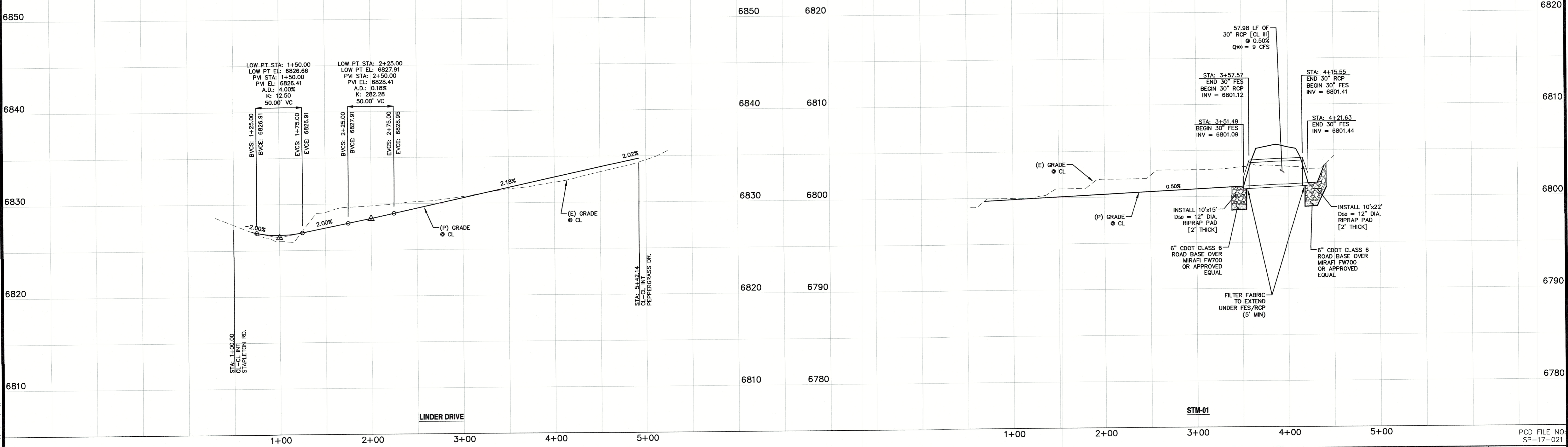
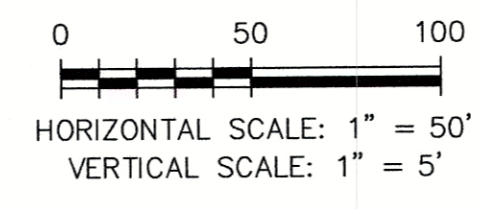
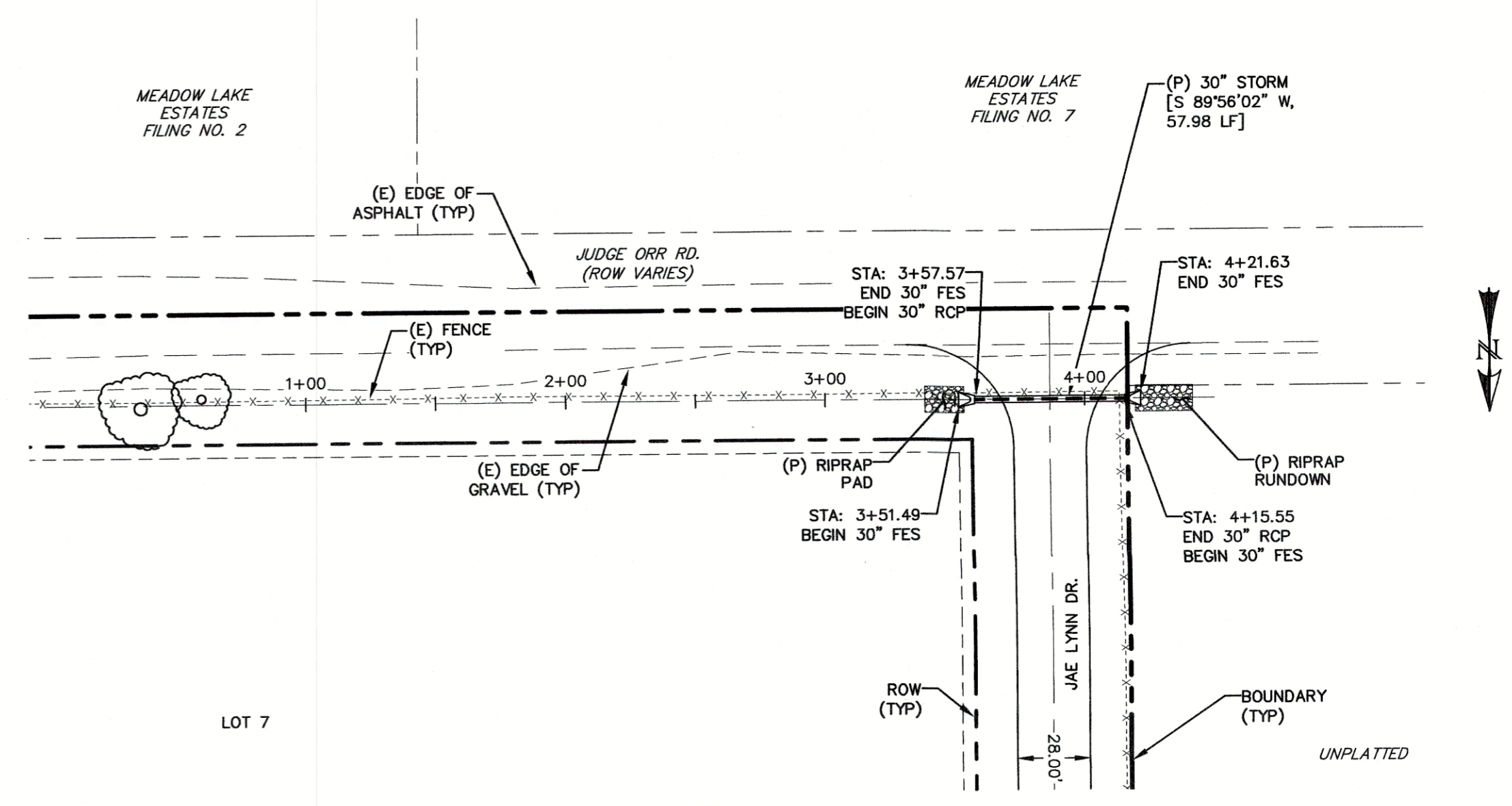


LINE TABLE		
LINE	BEARING	DISTANCE
L5	N0° 17' 32"W	1039.31
L6	N90° 00' 00"E	291.17

CURVE TABLE			
CURVE	DELTA	RADIUS	LENGTH
C9	90°17'32"	20.00	31.52
C10	41°43'14"	200.47	145.98
C11	115°13'26"	40.00	80.44
C12	76°08'19"	39.99	53.14

POINT TABLE - CL		
NUMBER	STATION	TYPE
1	1+00.00	PC
2	2+50.97	PT

LEGEND	
EXISTING	(E)
PROPOSED	(P)
CURB AND GUTTER	C&G
BOUNDARY	---
RIGHT-OF-WAY	---
LOT LINE	---
(E) CONTOUR, INDEX	---8820---
(E) CONTOUR	---
(P) CONTOUR, INDEX	---8820---
(P) CONTOUR	---
(E) STORM SEWER	---
(P) STORM SEWER	---



REV.	DESCRIPTION	DATE
1	ADDRESS AGENCY COMMENTS	10/23/18
2	ADDRESS AGENCY COMMENTS	12/18/18



PREPARED FOR:
JOHN JENNINGS
2030 TABOR CT.
COLORADO SPRINGS, CO 80919

PREPARED UNDER MY DIRECT SUPERVISION FOR AND BEHALF OF CATAMOUNT ENGINEERING.
DAVID M. JAMES, COLORADO PE #40510
1.30.19 DATE



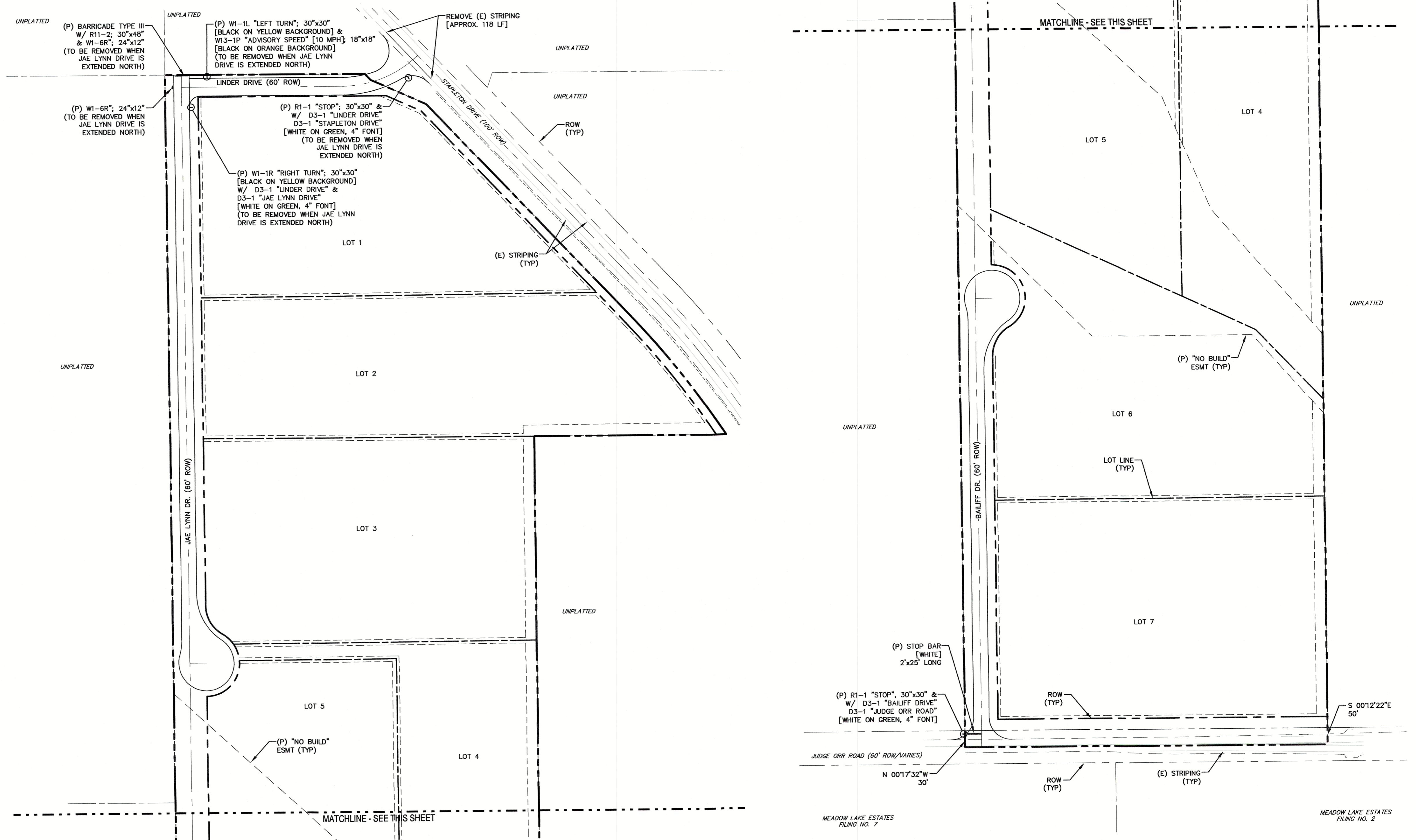
JUDGE ORR RANCHETTES
STREET IMPROVEMENT AND STORM SEWER PLAN & PROFILE

SCALE: 1" = 50'	DATE: 06/18/18
JOB NUMBER: 16-093	SHEET: 6 OF 7

PCD FILE NO: SP-17-021

SIGNAGE & STRIPING NOTES:

- ALL SIGNS AND PAVEMENT MARKINGS SHALL BE IN COMPLIANCE WITH THE CURRENT MANUAL ON UNIFORM TRAFFIC CONTROL DEVICES (MUTCD).
- REMOVAL OF EXISTING PAVEMENT MARKINGS SHALL BE ACCOMPLISHED BY A METHOD THAT DOES NOT MATERIALLY DAMAGE THE PAVEMENT. THE PAVEMENT MARKINGS SHALL BE REMOVED TO THE EXTENT THAT THEY WILL NOT BE VISIBLE UNDER DAY OR NIGHT CONDITIONS. AT NO TIME WILL IT BE ACCEPTABLE TO PAINT OVER EXISTING PAVEMENT MARKINGS.
- ANY DEVIATION FROM THE STRIPING AND SIGNING PLAN SHALL BE APPROVED BY EL PASO COUNTY DEVELOPMENT SERVICES.
- ALL SIGNS SHOWN ON THE SIGNING AND STRIPING PLAN SHALL BE NEW SIGNS. EXISTING SIGNS MAY REMAIN OR BE REUSED IF THEY MEET CURRENT EL PASO COUNTY AND MUTCD STANDARDS.
- STREET NAME AND REGULATORY STOP SIGNS SHALL BE ON THE SAME POST AT INTERSECTIONS.
- ALL REMOVED SIGNS SHALL BE DISPOSED OF IN A PROPER MANNER BY THE CONTRACTOR.
- ALL STREET NAME SIGNS SHALL HAVE "C" SERIES LETTERS, WITH LOCAL ROADWAY SIGNS BEING 4" UPPER-LOWER CASE LETTERING ON 8" BLANK AND NON-LOCAL ROADWAY SIGNS BEING 8" LETTERING, UPPER-LOWER CASE ON 12" BLANK, WITH 1/2" WHITE BORDER THAT IS NOT RECESSED. MULTI-LANE ROADWAYS WITH SPEED LIMITS OF 40 MPH OR HIGHER SHALL HAVE 8" UPPER-LOWER CASE LETTERING ON 18" BLANK WITH 1/2" WHITE BORDER THAT IS NOT RECESSED.
- ALL TRAFFIC SIGNS SHALL HAVE A MINIMUM HIGH INTENSITY PRISMATIC GRADE SHEETING.
- ALL LOCAL RESIDENTIAL STREET SIGNS SHALL BE MOUNTED ON A 1.75" X 1.75" SQUARE TUBE SIGN POST AND STUB POST BASE. FOR OTHER APPLICATIONS, REFER TO THE CDOT STANDARD S-614-8 REGARDING USE OF THE P2 TUBULAR STEEL POST SLIPBASE DESIGN.
- ALL SIGNS SHALL BE SINGLE SHEET ALUMINUM WITH 0.100" MINIMUM THICKNESS.
- ALL LIMIT LINES/STOP LINES, CROSSWALK LINES, PAVEMENT LEGENDS, AND ARROWS SHALL BE A MINIMUM 125 MIL THICKNESS PREFORMED THERMOPLASTIC PAVEMENT MARKINGS WITH TAPERED LEADING EDGES PER CDOT STANDARD S-627-1. WORD AND SYMBOL MARKINGS SHALL BE THE NARROW TYPE. STOP BARS SHALL BE 24" IN WIDTH. CROSSWALKS LINES SHALL BE 12" WIDE AND 8' LONG PER CDOT S-627-1.
- ALL LONGITUDINAL LINES SHALL BE A MINIMUM 15MIL THICKNESS EPOXY PAINT. ALL NON-LOCAL RESIDENTIAL ROADWAYS SHALL INCLUDE BOTH RIGHT AND LEFT EDGE LINE STRIPING AND ANY ADDITIONAL STRIPING AS REQUIRED BY CDOT S-627-1.
- THE CONTRACTOR SHALL NOTIFY EL PASO COUNTY DEVELOPMENT SERVICES (719) 520-6819 PRIOR TO AND UPON COMPLETION OF SIGNING AND STRIPING.
- THE CONTRACTOR SHALL OBTAIN A WORK IN THE RIGHT OF WAY PERMIT FROM THE EL PASO COUNTY PUBLIC SERVICE DEPARTMENT (PSD) PRIOR TO ANY SIGNAGE OR STRIPING WORK WITHIN AN EXISTING EL PASO COUNTY ROADWAY.

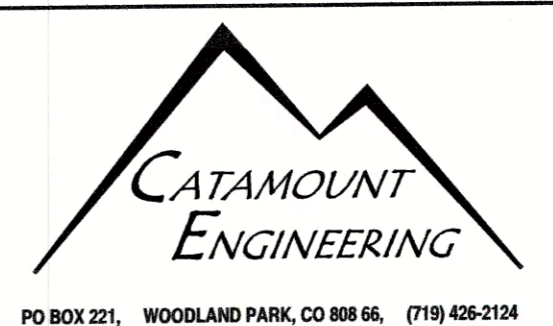


REV.	DESCRIPTION	DATE
1	ADDRESS AGENCY COMMENTS	10/23/18
2	ADDRESS AGENCY COMMENTS	12/18/18



PREPARED FOR:
JOHN JENNINGS
2030 TABOR CT.
COLORADO SPRINGS, CO 80919

PREPARED UNDER MY DIRECT SUPERVISION FOR AND BEHALF OF
CATAMOUNT ENGINEERING.



JUDGE ORR RANCHETTES
SIGNAGE & STRIPING PLAN

DESIGNED BY: MGP	DRAWN BY: MGP
SCALE: 1"=100'	DATE: 06/18/18
JOB NUMBER: 16-093	SHEET: 7 OF 7

PCD FILE NO:
SP-17-021

DAVID L. MIJARES, COLORADO PE #40510 DATE