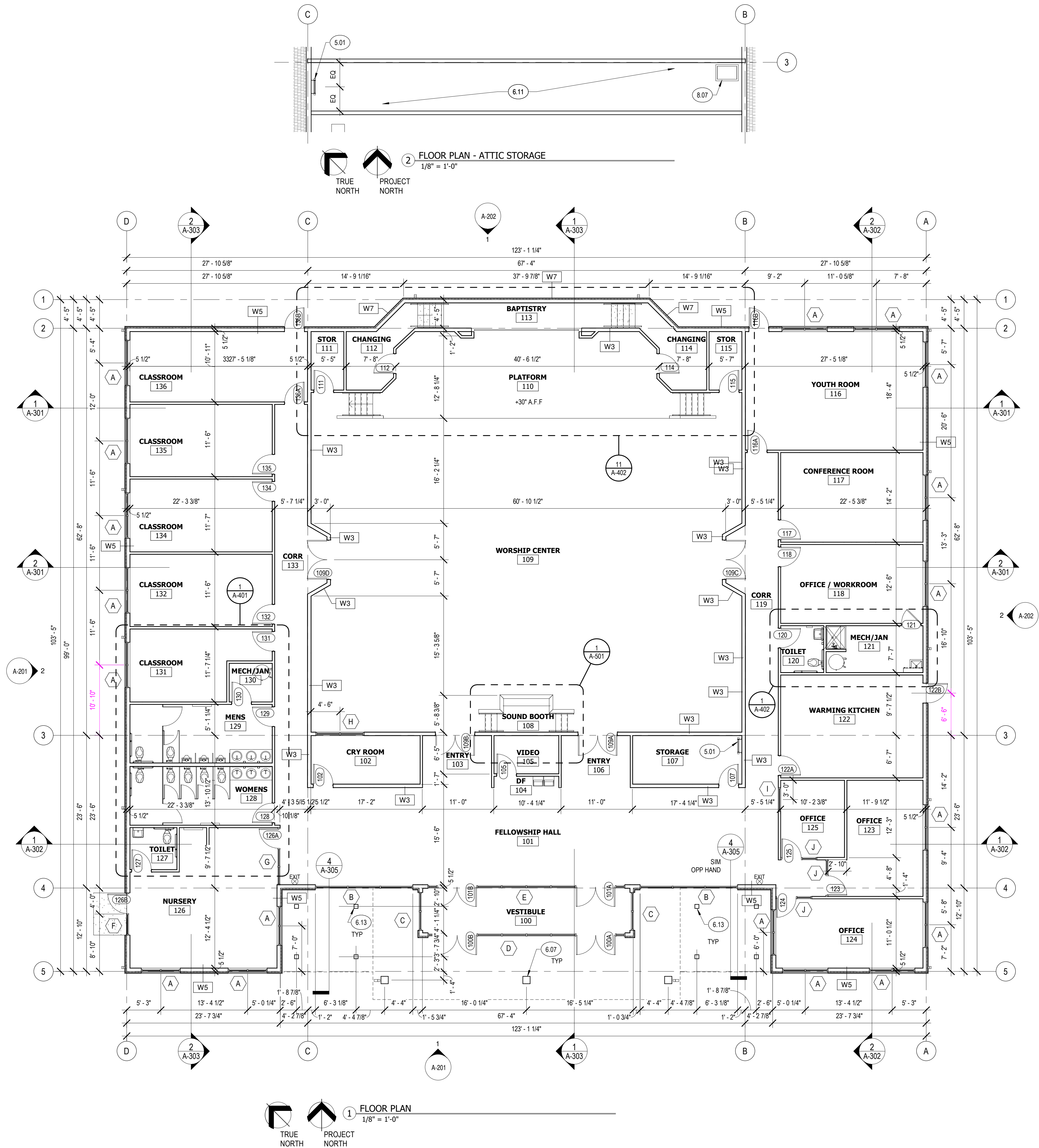


ALL DRAWINGS, SPECIFICATIONS AND COPIES THEREOF ARE AND SHALL REMAIN THE PROPERTY OF THE ARCHITECT. THEY ARE TO BE USED ONLY WITH RESPECT TO THIS PROJECT AND ARE NOT TO BE USED ON ANY OTHER PROJECT OR EXTENSIONS TO THIS PROJECT, EXCEPT BY WRITTEN AGREEMENT AND APPROPRIATE COMPENSATION TO THE ARCHITECT. SUCH DOCUMENTS ARE TO BE RETURNED OR SUITABLY ACCOUNTED FOR BY THE ARCHITECT ON REQUEST AT THE COMPLETION OF WORK.



1 FLOOR PLAN
1/8" = 1'-0"

TRUE NORTH
PROJECT NORTH

2 FLOOR PLAN - ATTIC STORAGE
1/8" = 1'-0"

TRUE NORTH
PROJECT NORTH

GENERAL NOTES - FLOOR PLAN

1. FIELD VERIFY ALL DIMENSIONS AND CONDITIONS.
2. DIMENSIONS ARE FROM FACE OF STUD, OR FACE OF MASONRY UNLESS NOTED OTHERWISE.
3. PROVIDE BLOCKING AS REQUIRED FOR SUPPORT OF SPECIALTIES AND EQUIPMENT.
4. SEE FINISH SCHEDULE FOR FINISH SPECIFICATIONS.
5. CONTRACTOR TO COORDINATE LOCATIONS OF ADDITIONAL PENETRATIONS THROUGH WALLS, FLOORS, AND ROOF AS REQUIRED.
6. ALL DIMENSIONS NOTED "CLR" OR "CLR" ARE FOR EQUIPMENT OR CODE CLEARANCE AND MUST BE STRICTLY MAINTAINED.
7. ALL ANGLES ARE 90 AND 45 DEGREES IN PLAN UNLESS OTHERWISE NOTED.
8. PROVIDE 48" STAINLESS STEEL CORNER GUARDS ON ALL OUTSIDE WALL CORNERS.
9. PROVIDE REDUCER STRIPS AT FLOOR TRANSITIONS OF UNEQUAL MATERIAL THICKNESS.

WALL TYPES

- NOTE: ALL PARTITIONS ARE TYPE W1 UNLESS NOTED OTHERWISE.**
- W0 2x4 STUDS AT 16" O.C.
 - W1 2x4 STUDS AT 16" O.C., 5/8" TYPE X GYPSUM BOARD EACH SIDE, APPLY FINISH PER FINISH SCHEDULE, WALL EXTENDS 6" ABOVE CEILING
 - W2 2x4 STUDS AT 16" O.C. WITH BATT INSULATION, 5/8" TYPE X GYPSUM BOARD EACH SIDE, APPLY FINISH PER FINISH SCHEDULE, WALL EXTENDS 6" ABOVE CEILING
 - W3 2x6 STUDS AT 16" O.C. WITH BATT INSULATION, 5/8" TYPE X GYPSUM BOARD EACH SIDE, APPLY FINISH PER FINISH SCHEDULE
 - W4 2x6 STUDS AT 16" O.C. WITH BATT INSULATION, 5/8" TYPE X GYPSUM BOARD AT INTERIOR, EXTERIOR SHEATHING PER STRUCTURAL DRAWINGS, BUILDING WRAP, 1 1/2" RIGID INSULATION, STUCCO FINISH
 - W5 W4 WALL TYPE WITH STONE WAINSCOT TO +2'-6", STUCCO FINISH ABOVE STONE
 - W6 2x6 STUDS AT 16" O.C., 1/2" EXTERIOR SHEATHING (BOTH SIDES), BUILDING WRAP AT EXTERIOR, STUCCO FINISH
 - W7 STONE WAINSCOT ON CONCRETE FOUNDATION WALL

KEYNOTES

- 5.01 STEEL LADDER TO ATTIC SPACE
- 6.07 14x14 TIMBER COLUMN - STAIN; SEE STRUCTURAL DRAWINGS
- 6.11 3/4" WOOD FLOORING OVER 2x6 WOOD FLOOR JOISTS AT 24" O.C. MAX.
- 6.13 8x8 TIMBER COLUMN - STAIN; SEE STRUCTURAL DRAWINGS
- 8.07 FLOOR ACCESS PANEL

ROI PROPERTY GROUP, LLC
NORWOOD BIBLE CHURCH

SADDLEHORN RANCH
JUDGE ORR AND CURTIS ROADS
EL PASO COUNTY, CO

REVISIONS:	DATE	DESCRIPTION
#		

PROJECT #: 2221
ISSUE DATE: 11/17/ 2022
ISSUED FOR: SD
DRAWN BY: Author
CHECKED BY: Checker
COPYRIGHT © 2022

SHEET TITLE:
FLOOR PLAN

SHEET #:
A-101

KEYS + LAUER
ARCHITECTS

11681 VOYAGER PKWY, #200
COLORADO SPRINGS, CO 80921
(719) 634 - 3751
www.KeysLauerArchitects.com